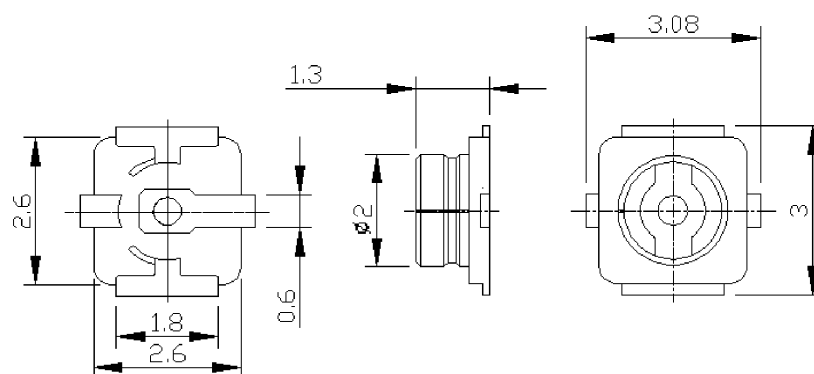


STRAIGHT RECEPTACLE FOR PCB
REEL OF 1000
R302.302.000

Series : MML



All dimensions are in mm.



COMPONENTS	MATERIALS	PLATING (μm)
BODY	BRONZE	GOLD
CENTER CONTACT	BRASS	GOLD
OUTER CONTACT		
INSULATOR	LCP	
GASKET		
OTHERS PARTS		
.	.	.
.	.	.

Issue : 1016 A

In the effort to improve our products, we reserve the right to make changes judged to be necessary.

RADIAL

STRAIGHT RECEPTACLE FOR PCB**R302.302.000****REEL OF 1000**

Series : MML

PACKAGING

Standard	Unit	Other
	'W' option	Contact us

SPECIFICATION**ELECTRICAL CHARACTERISTICS**

Impedance	50	Ω
Frequency	0-6	GHz
VSWR	1.35 + 0,0000	x F(GHz) Maxi
Insertion loss	NA	$\sqrt{F}(\text{GHz})$ dB Maxi
RF leakage	- (NA	- F(GHz)) dB Maxi
Voltage rating	60	Veff Maxi
Dielectric withstanding voltage	200	Veff mini
Insulation resistance	500	M Ω mini

ENVIRONMENTAL

Operating temperature	-40/+90	$^{\circ}\text{C}$
Hermetic seal		Atm.cm3/s
Panel leakage		

OTHER CHARACTERISTICS

Assembly instruction

Others :

MECHANICAL CHARACTERISTICS

Center contact retention		
Axial force – Mating end	NA	N mini
Axial force – Opposite end	NA	N mini
Torque	NA	N.cm mini
Recommended torque		
Mating	NA	N.cm
Panel nut	NA	N.cm
Mating life	30	Cycles mini
Weight	0,0200	g

Issue : 1016 A

In the effort to improve our products, we reserve the right to make changes judged to be necessary.

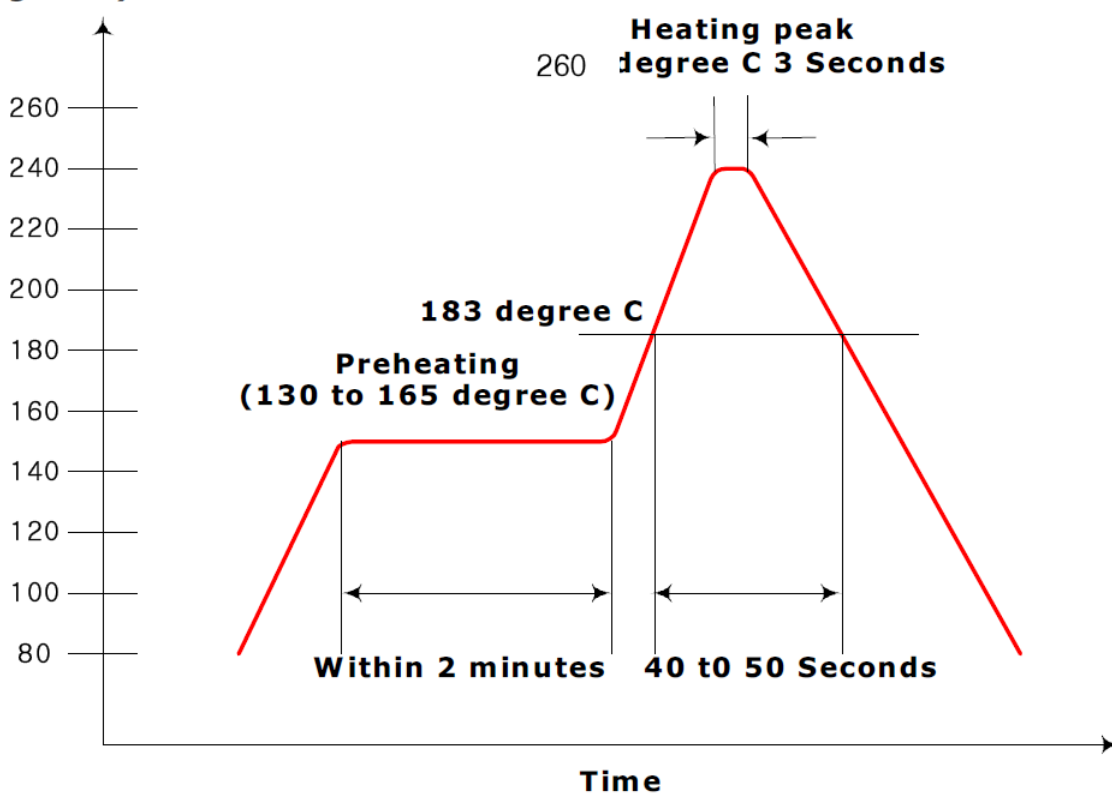
RADIAL 

STRAIGHT RECEPTACLE FOR PCB**REEL OF 1000****R302.302.000**

Series : MML

SOLDER PROCEDURE

- 1) The temperature profile above is for mounting the receptacles on Printed Circuit Board.
- 2) This profile is subject to change according to different conditions.
- 3) The maximum temperature does not exceed 260 degree C.
- 4) The recommended maximum temperature for manual soldering is 350 degree C for 5 seconds.

TEMPERATURE PROFILE**Temperature
(Degree C)****Issue : 1016 A**

In the effort to improve our products, we reserve the right to make changes judged to be necessary.

RADIAL 

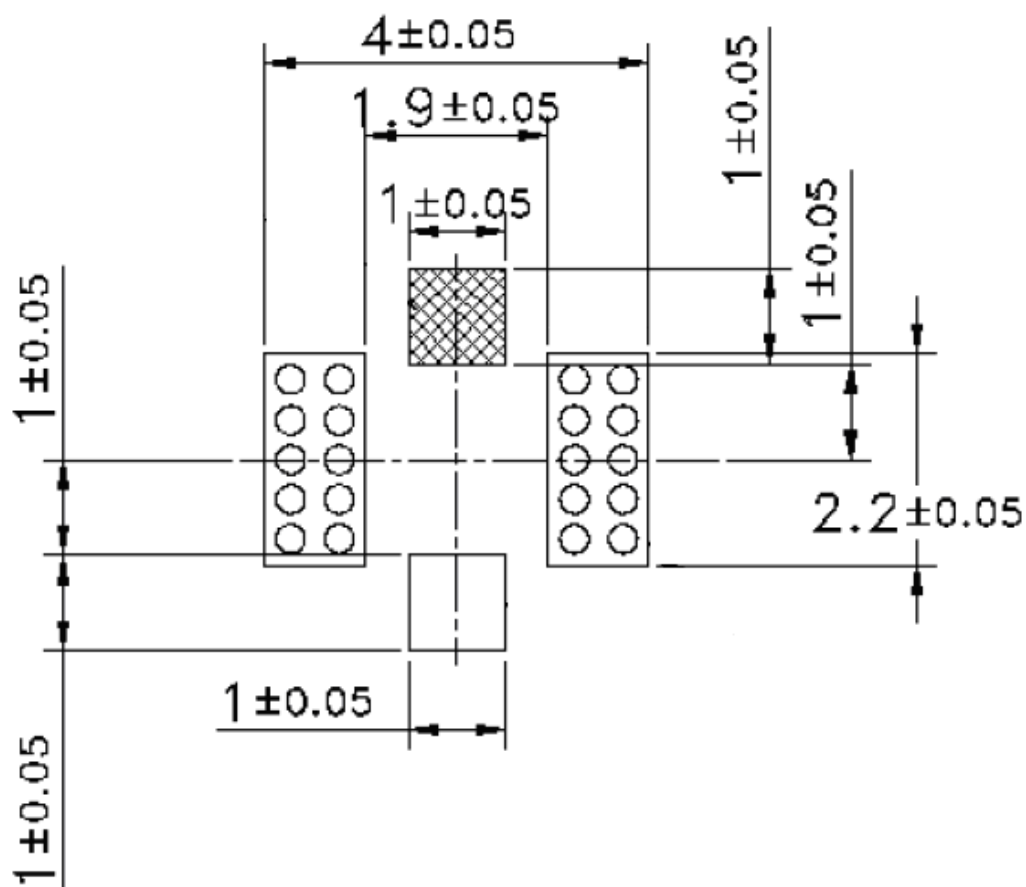
STRAIGHT RECEPTACLE FOR PCB

REEL OF 1000

R302.302.000

Series : MML

RECOMMENDED PAD DIMENSIONS:



Issue : 1016 A

In the effort to improve our products, we reserve the right to make changes judged to be necessary.

RADIAL 

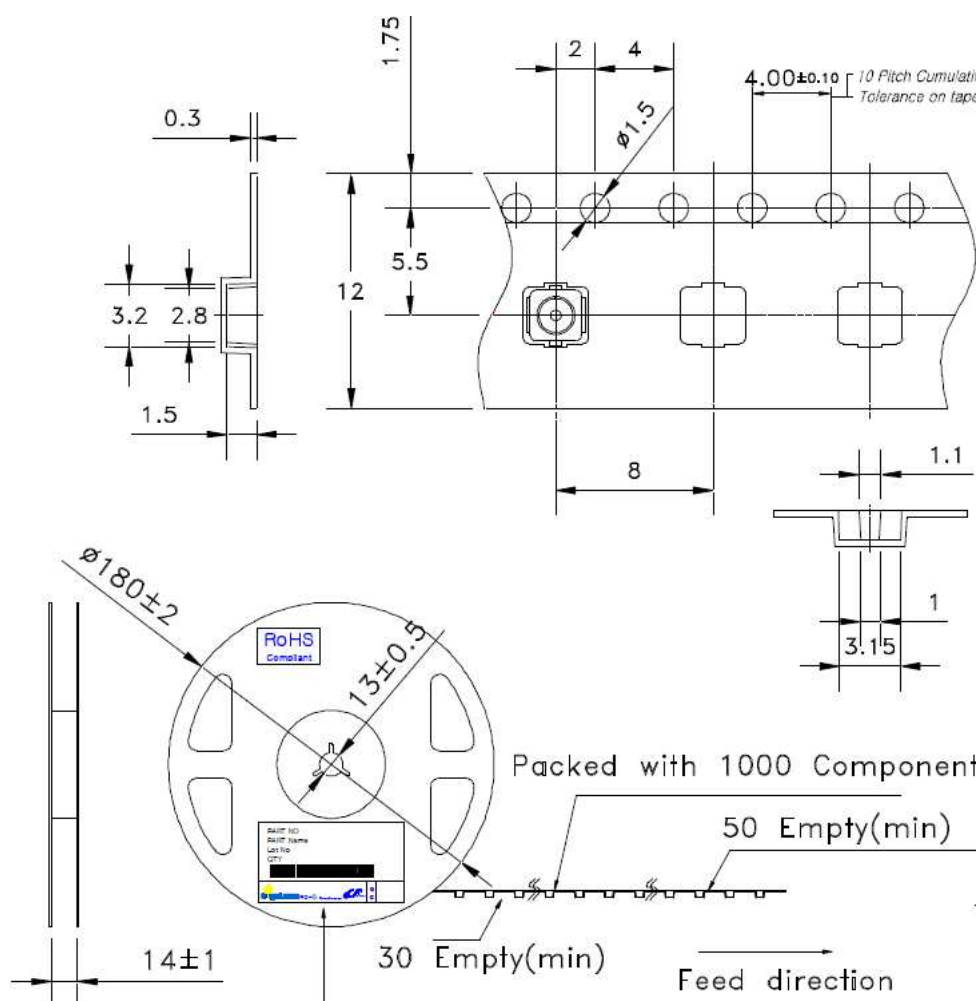
STRAIGHT RECEPTACLE FOR PCB

REEL OF 1000

R302.302.000

Series : MML

PACKING



Issue : 1016 A

In the effort to improve our products, we reserve the right to make changes judged to be necessary.

RADIAL R