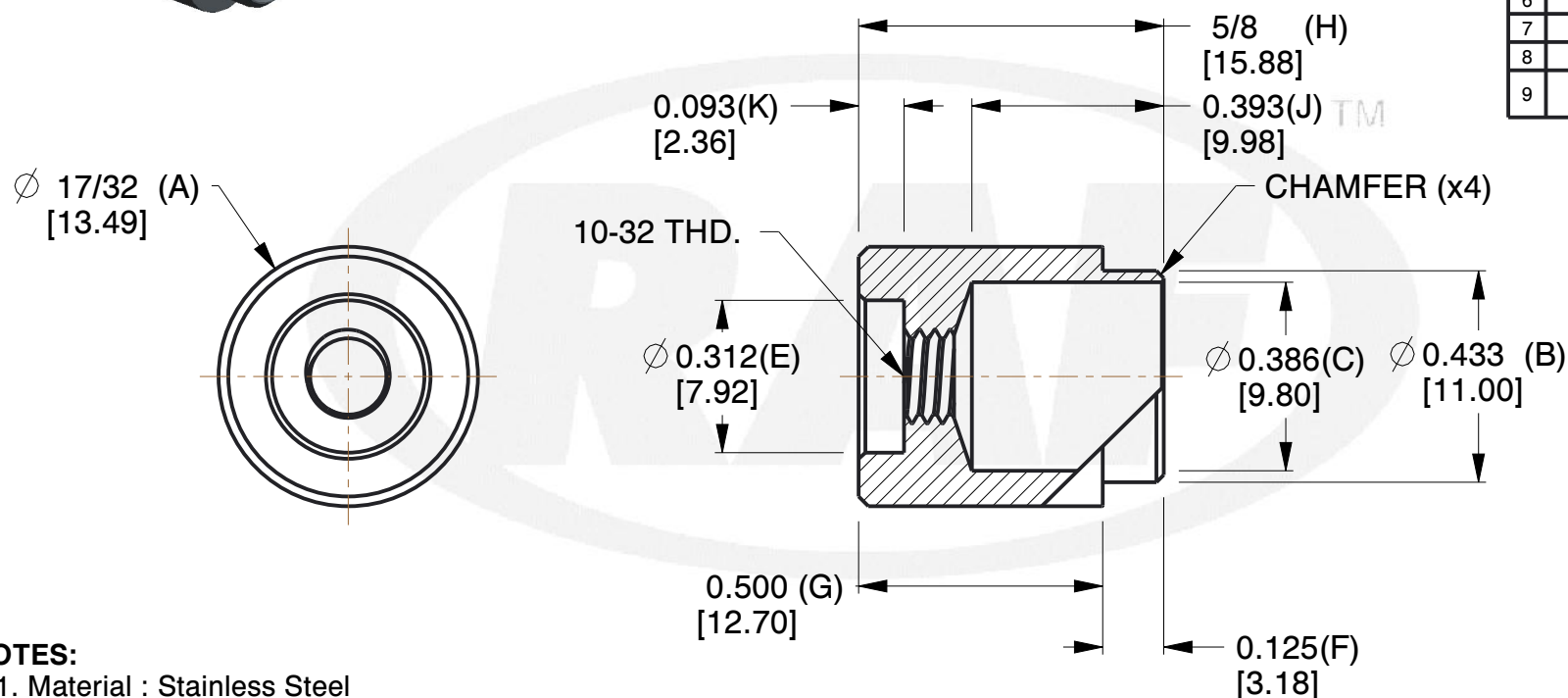


REV	CHANGE	DATE	DRN	CHK
	Drawn	03/06/17	SJ	T

TOLERANCE DETAILS		
1	A	$\pm 0.004$ [ $\pm 0.01$ ]
2	B	$+ 0.000$ [ $+ 0.00$ ] $- 0.003$ [ $- 0.08$ ]
3	C	$+ 0.004$ [ $+ 0.10$ ] $- 0.001$ [ $- 0.02$ ]
4	E	$+ 0.005$ [ $+ 0.12$ ] $- 0.000$ [ $- 0.00$ ]
5	F	$\pm 0.005$ [ $\pm 0.12$ ]
6	G	$\pm 0.005$ [ $\pm 0.12$ ]
7	H	$\pm 0.010$ [ $\pm 0.25$ ]
8	J	$\pm 0.005$ [ $\pm 0.12$ ]
9	K	$+ 0.010$ [ $+ 0.25$ ] $- 0.000$ [ $- 0.00$ ]



#### NOTES:

1. Material : Stainless Steel
2. Finish :
3. ASME Y14.5M - 2009
4. All Drawing Dimensions are in Inches [mm]
5. Unless otherwise specified; Edge Breaks, Radii or Countersinks 0.005-0.015



95 Silvermine Rd., Seymour CT 06483  
Tel: 203-888-2133, Fax: 203-888-9860

This Drawing is the Property of RAF.  
It contains confidential, proprietary  
information that is RAF property. Do  
not disclose to or duplicate for others  
except as authorized by RAF.

**TOLERANCES**  
ALL DIMENSIONS ARE INCHES  
(UNLESS OTHERWISE SPECIFIED)  
**METALLIC**  
LENGTHS  $\leq 6$  INCHES  $\pm 0.005$   
LENGTH  $> 6$  INCHES  $\pm 0.010$   
DIAMETERS:  $\pm 0.005$   
**NON-METALLIC**  
LENGTH:  $\pm 0.010$  DIAMETERS:  $\pm 0.010$   
**INTERNAL THREADS:**  
MINIMUM THREAD DEPTH

COMPONENT	PANEL SCREW
1029-125-SS	<b>SCALE</b>
	2.59
PANEL SCREW RETAINER STYLE D	<b>SHEET</b>
	1 of 1