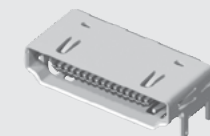


HDMR-19-01-S-SM-PF



HDMR-19-02-S-SM



HDMR-29-01-S-SM

## HDMR SERIES

# HIGH-SPEED I/O RECEPTACLES

## SPECIFICATIONS

**Insulator Material:**

High Temperature  
Thermoplastic

**Contact Material:**

Copper Alloy

**Shell Material:**

Steel

**Operating Temp Range:**

-25 °C to +85 °C

**Plating:**

Gold on Contacts, Nickel on  
Shell and Tin on Tails

**Current Rating:**

1.3 A per pin

(6 adjacent pins powered)

**Voltage Rating:**

40 VAC

**Minimum Cycles:**

100

**Lead-Free Solderable:**

Yes

**RoHS Compliant:**

Yes

**RUGGEDIZED**

BY SAMTEC

- Panel flange option
- Locking option

Meets Digital Display  
Working Group Single  
Monitor Interface  
Specifications

Hot  
Pluggable

Optional Panel Flange  
(19 position only)

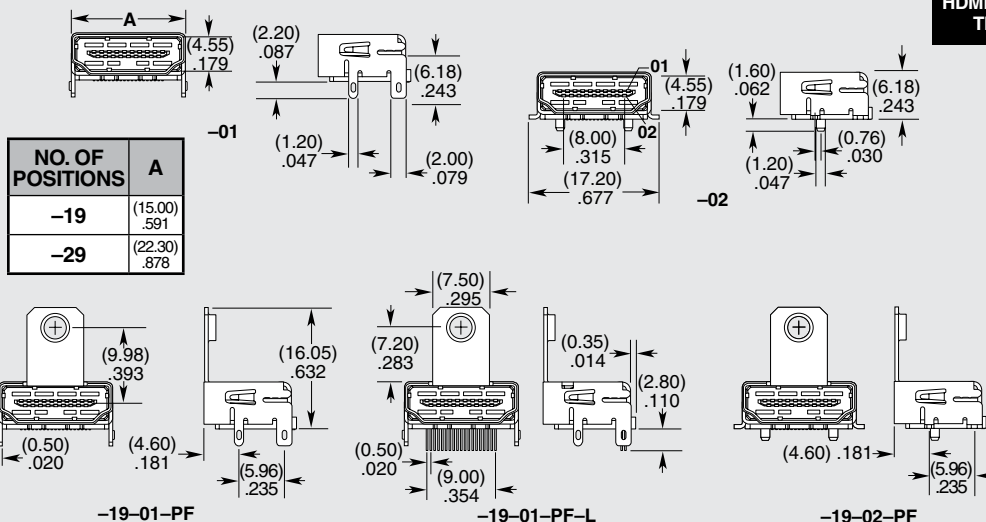
Selectively  
Plated

19 or 29  
Positions

Surface Mount  
or Through-hole  
Signal Leads

Through-hole  
or Surface Mount  
(19 only)  
Ground tails

HDMR	NO. OF POSITIONS	LEAD STYLE	PLATING	TAIL OPTION	OPTIONS
	<b>-19</b> = 19 Positions / Mates with HPXXX 5 Pairs  <b>-29</b> = 29 Positions / Mates with HPXXX 8 Pairs	<b>-01</b> = Through-hole Ground Tails  <b>-02</b> = Surface Mount Ground Tails (-19 only)	<b>-S</b> = 30 μ" (0.76 μm) Gold on Mating Area, Tin on Tails	<b>-SM</b> = Surface Mount (Signal Leads)  <b>-TH</b> = Through-hole (Only available on HDMR-19-01-X-TH-PF-L)	(Leave Blank for no Panel Flange)  <b>-PF</b> = Panel Flange  <b>-L</b> = Locking Option (Only available on HDMR-19-01-X-TH-PF-L)



**Note:** Some lengths, styles and options are non-standard, non-returnable.

Due to technical progress, all designs, specifications and components are subject to change without notice.

**WWW.TOBY.CO.UK**

All parts within this catalog are built to Samtec's specifications.  
Customer specific requirements must be approved by Samtec and identified in a Samtec customer-specific drawing to apply.