

**FEATURES****UP TO 6PDT  
15 AMP CONTACT:**MAXIMUM FLEXIBILITY OF USES EASILY HANDLES  
MODERATELY HEAVY LOADS**3 AMP 600 VAC RATING:**

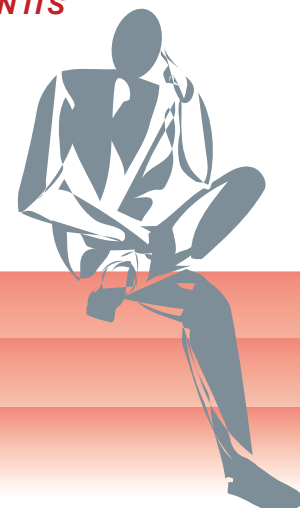
SUITABLE FOR NEARLY ALL CONTROL VOLTAGES

**DIN RAIL/PANEL  
MOUNTABLE:**RAPID INSTALLATION - CAN REPLACE EXISTING OPEN  
TYPES SUCH AS POTTER & BRUMFIELD KUB WITHOUT  
PANEL MODIFICATION**RECTIFIED COILS  
ON AC TYPES:**

RUNS COOLER &amp; QUIETER, USES LESS ENERGY.

**BENEFITS****DPDT, 4PDT & 6PDT 15 AMPS****UL US DIN MOUNTING**  
UL PENDING

**THE CLASS 385 RELAY IS A MECHANICALLY LATCHED, ELECTRICALLY RESET RELAY, IT CAN BE FURNISHED WITH TWO, FOUR OR SIX SETS OF DOUBLE THROW CONTACTS, AND ALL POPULAR COIL VOLTAGES. AC COIL TYPES INCORPORATE BUILT IN RECTIFIERS FOR MAXIMUM COIL EFFICIENCY AND MINIMAL HEATING FOR CONTINUOUS DUTY CAPABILITY. ALL TERMINALS ARE STANDARD 0.187 INCH QUICK CONNECT AND ARE ALSO PIERCED FOR DIRECT SOLDER CONNECTION IF DESIRED. THE MOLDED PLASTIC DUST COVER SNAPS ONTO A STANDARD DIN RAIL, AS WELL AS INCORPORATING MOUNTING SLOTS THAT EXACTLY MATCH POTTER & BRUMFIELD'S KUB. UNLIKE MOST MECHANICAL LATCH RELAYS, THE 385 DOES NOT HAVE A DOMINANT COIL. IF BOTH COILS ARE ENERGIZED AT THE SAME TIME, ALL OF THE NORMALLY OPEN CONTACTS CLOSE, AND ALL NORMALLY CLOSED CONTACTS OPEN. WHICH EVER COIL IS DE-ENERGIZED FIRST, RELEASES AND LOCKS THE OTHER SIDE IN ITS ENERGIZED POSITION.**

**GENERAL SPECIFICATIONS****COIL**

Pull-in Voltage:	75% of nominal voltage or less
Max. Voltage:	110% of nominal voltage
Resistance:	±10% measured @ 25°C
Coil Power:	2.6 watts DC, 2.0 VA (60Hz) AC 25°C
Pulse Duration Min.:	30 milliseconds
Duty:	Intermittent duty

**CONTACTS**

Contact Material:	Silver cadmium oxide, gold flashed
Contact Resistance:	75 milliohms maximum initial at rated current
Contact Rating:	15 amps, @ 120/ 240 / 277 VAC. 3 amps, @ 600 VAC. (resistive load), 10 amps @ 28 VDC. (resistive load), 1/3 Hp @ 120 VAC, 50/60 Hz 1/2Hp @ 208 / 240 / 480 / 600 VAC. 50/60 Hz (motor load)

**TIMING**

Operate Time:	25 mS min @ nominal voltage
Reset Time:	20 mS min @ nominal voltage

**DIELECTRIC STRENGTH**

Contacts to Coil:	2000 V rms
Coil to Frame:	2000 V rms
Across Open Contacts:	500 V rms
Pole to Pole:	1500 V rms
Contacts to Frame:	2000 V rms
Insulation Resistance:	1000 megohms min. @ 500 VDC

**TEMPERATURE**

Operating:	-40°C to +70°C @ rated operation
Storage:	-40°C to +105°C

**LIFE EXPECTANCY**

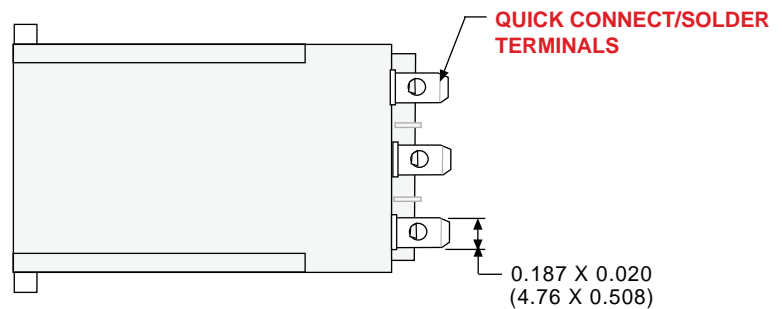
Electrical:	100,000 operations @ rated resistive load
Mechanical:	10,000,000 operations @ no load

**MISCELLANEOUS**

Operating Position:	Any
Insulation Material:	Molded plastic
Enclosure:	Polycarbonate
Weight:	85 grams approx.

**NEW**  
From The Market  
Leader in Industrial  
Relays  
**AVAILABLE: Q-2-02**

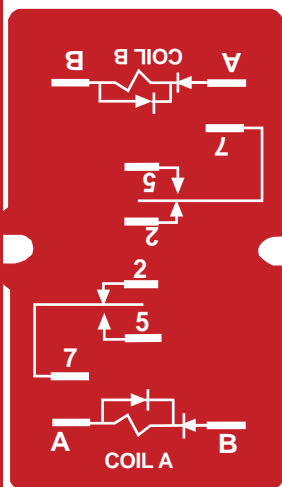
DIMENSIONS SHOWN IN INCHES & (MILLIMETERS).



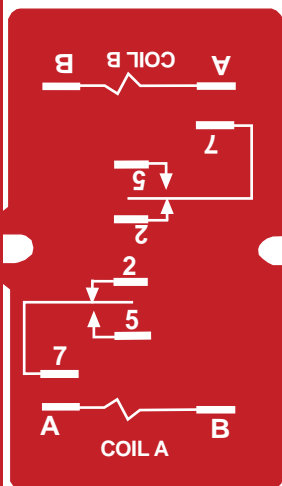
DPDT, 4PDT & 6PDT 15 AMPS

## WIRING DIAGRAMS

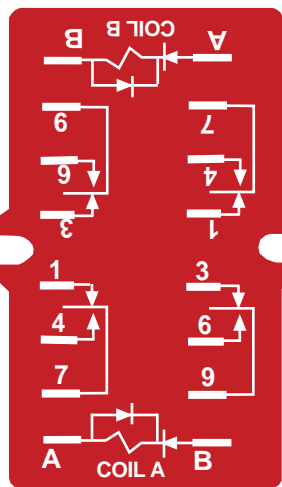
(VIEWED FROM PIN END)



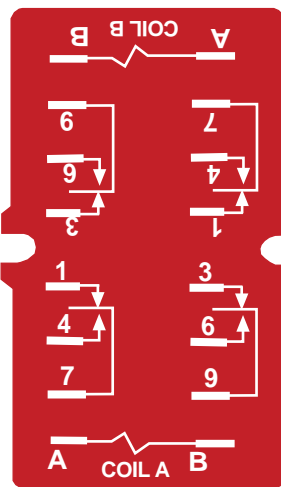
**385XBX DPDT**  
(AC COIL)



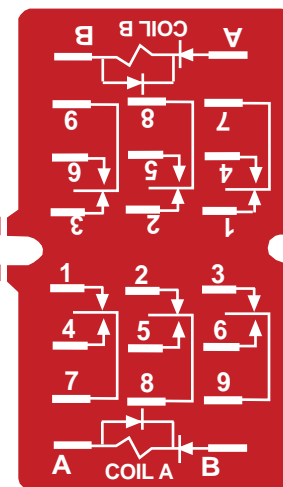
**385XBX DPDT**  
(DC COIL)



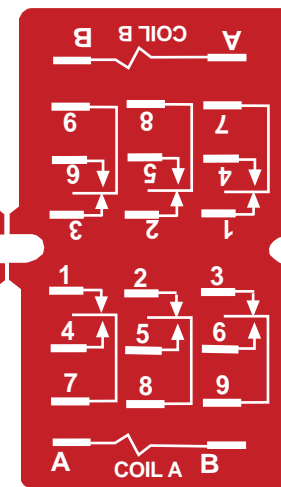
**XDX 4PDT**  
(AC COIL)



**XDX 4PDT**  
(DC COIL)



**XFX 6PDT**  
(AC COIL)



**XFX 6PDT**  
(DC COIL)



## ORDERING CODE FOR RELAYS

**F** **385** **XBX** **-240**

**COILS:** \_\_\_\_\_  
130°C: NO CODE, 150°C: CODE F

**CLASS:** \_\_\_\_\_  
385 - 15 AMPS RATING WITH  
0.187" QUICK CONNECT/SOLDER  
TERMINALS

**CONTACT ARRANGEMENTS:** \_\_\_\_\_  
XBX: DPDT,  
XDX: 4PDT  
XFX: 6PDT

**COIL VOLTAGE:** \_\_\_\_\_  
6, 12, 24, 120, 240 ADD "A" FOR AC COILS  
6, 12, 24, 48, 110-125 ADD "D" FOR DC COILS

STANDARD PART NUMBERS	CONTACT CONFIGU- RATION	COIL MEASURED @ 25°C	
		NOMINAL INPUT VOLTAGE	NOMINAL RESISTANCE (OHMS)
AC OPERATED, DUAL COIL			
385XDX-120A	4PDT	120 VAC	4800/4800 Ω
DC OPERATED			
385XDX-12D	4PDT	12 VDC	85/85 Ω
385XDX-24D	4PDT	24 VDC	340/340 Ω

RETROFITS POTTER & BRUMFIELD KUB  
SEE END OF SECTION 5 FOR CROSS REFERENCE