

Magnecraft

191 Waukegan Rd, Ste 206
Northfield, IL 60093-2743

Phone: (847)441-2526

Fax: (847)441-2522

Email: info@magnecraft.com

Item # 6225AXXSZS-DC3, Class 6 Solid State Relays/SPST-NO, SPST-NC, DPST-NO, 10-150 Amp Rating

Class 6 Solid State Relays/SPST-NO, SPST-NC, DPST-NO, 10-150 Amp Rating

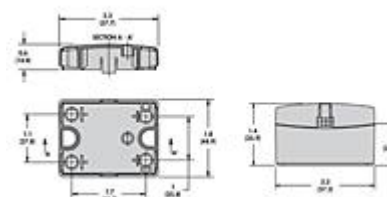
Supercedes: W6225DSX-1

The new finger-safe Class 6 "Hockey Puck" Style Solid State Relay (SSR) expands and enhances the current Magnecraft Solid State Relay product line.

This product features a finger-safe cover and LED Status Indicator. The optically coupled circuitry isolates the input from the output to give pure solid state performance. This product carries with it agency certifications from UL, CSA, and CE.

Available for products up to 40 Amps.

This item is normally stocked



[SPECIFICATIONS](#) · [OUTPUT CHARACTERISTICS](#) · [INPUT CHARACTERISTICS](#) · [PERFORMANCE CHARACTERISTICS](#) · [ENVIRONMENT](#) · [MISCELLANEOUS CHARACTERISTICS](#)

SPECIFICATIONS

Component Type	Solid State
Mounting Type	Panel
Rated Current Load	25 A
Contact Configuration	SPST-NO
Control Voltage	DC
Load Type	DC
Output Voltage Range	24 to 280 VAC

Switching Type	Zero Cross
----------------	------------

OUTPUT CHARACTERISTICS

Switching Device	SCR (2)
Switching Voltage	24 to 280 VAC
Maximum Rate of Rise Off State Voltage [dv/dt]	500 V/us
Incandescent Lamp Ampere Rating [rms]	16 A
Motor Load Rating [rms]	8 A
Min. Load Current to Maintain On	120 mA
Non-Repetitive Surge Current (1 cycle)	250 A
Max. RMS Overload Current (1 second)	40 A
Max. Off State Leakage Current [rms]	10 mA
Peak Blocking Voltage	600 Vpk
Typical On State Voltage Drop [rms]	1.6 VAC
Max. On State Voltage Drop [rms]	1.6 VAC
Maximum I ² T for Fusing (A2)	250

INPUT CHARACTERISTICS

Voltage Range	3 to 32 VDC
Must Release Voltage	1 VDC
Nominal Input Impedance	Ohm Current Regulator
Typical Input Current at 5VDC or 240VAC	16 mA
Reverse Polarity Protection	Yes

PERFORMANCE CHARACTERISTICS

Electrical Life (UL508), Operations at Rated Current (Resistive)	100000
Mechanical Life, Unpowered	10000000
Operating Time (Response Time) - On	8.3 ms
Operating Time (Response Time) - Off	8.3 ms
Rated Insulation Voltage, Input to Output	2500 VAC
Dielectric Strength, Terminals to Chassis	4000 VAC

ENVIRONMENT

Product Certifications, Standard Version	CE CSA UL
Ambient Air Temperature around the Device - Storage	-40 to +100 °C
Ambient Air Temperature around the Device - Operation	-40 to +80 °C
Degree of Protection	IP 20

MISCELLANEOUS CHARACTERISTICS

Thermal Resistance (Junction to Case)	1.02 °C/W
LED Input	Green
Input Terminal	M3.5
Output Terminal	M4
