

Inlet filter, ECO design, front- or rear side mounting, protection class I or II

Standard- or Medical-Filter



new

Snap-in mounting from front side  
Protection class IIC14  
70° CC18  
70° C**Description**

- Panel Mount:  
Screw-on version from front or rear side, snap-in version from front side
- 2 Functions:  
Appliance Inlet, protection class I or II, Line filter in standard and medical version Quick connect terminals 6.3 x 0.8 mm

**Approvals**

- VDE License Number: 40016382
- UL License Number: E72928

**Characteristics**

- Compact high performance filter
- Optimal shielding due to completely closed filter case, unpotted
- Designed for standard and medical applications
- Suitable for assembly in metal plated plastic housings
- Qualified for use in equipment according IEC/EN 60950

**Other versions on request**

- Snap-in for panel thickness >2mm to 3mm
- Solder terminals
- Class X1 capacitor for enhanced surge withstand voltage
- Medical version M80

**Weblinks**

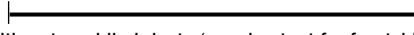
[Approvals](#), [RoHS](#), [CHINA-RoHS](#), [e-Store](#), [SCHURTER-Stock-Check](#), [Distributor-Stock-Check](#)

**Technical Data**

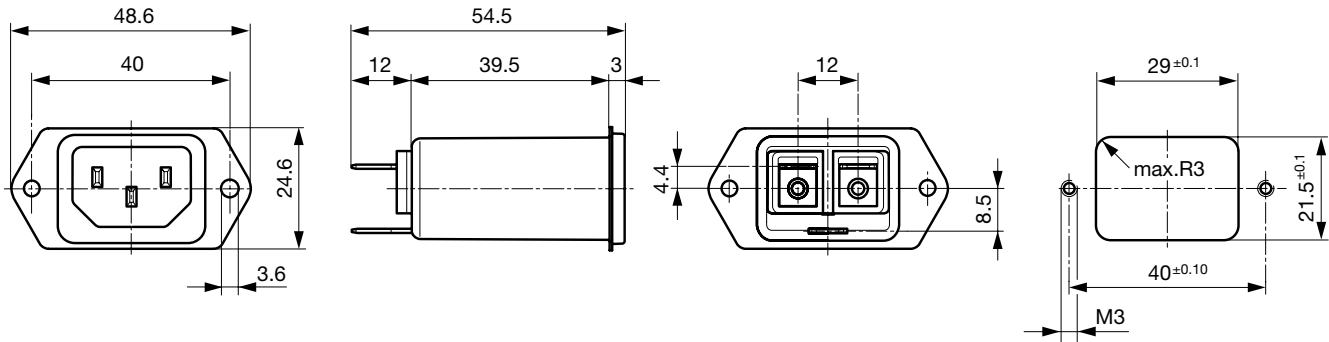
Ratings IEC	1 - 10A @ Ta 40 °C / 250 VAC; 50Hz
Ratings UL/CSA	1 - 15A @ Ta 40 °C / 250 VAC; 60Hz
Leakage Current	standard < 0.5 mA (250 V / 60Hz) medical < 5 µA (250 V / 60 Hz)
Dielectric Strength	> 1.7 kVDC between L-N > 2.7 kVDC between L/N-PE Test voltage (2 sec)
Allowable Operation Temp.	-25 °C to 85 °C
Climatic Category	25/085/21 acc. to, IEC 60068-1
Degree of Protection	from front side IP 40 acc. to IEC 60529
Protection Class	Suitable for appliances with protection class I or II acc. to IEC 61140
Terminal	Quick connect terminals 6.3 x 0.8 mm
Panel Thickness s	Screw-on: max 8 mm Mounting screw torque max 0.5 Nm Snap-in: 0.8 mm to 2 mm (all steps with one variant)
Material: Housing	Thermoplast / steel tin-plated, black / metallic, UL 94V-0

Appliance-Inlet/-Outlet	C14/C18 acc. to IEC/EN 60320-1, UL 498, CSA C22.2 no. 42 (for cold conditions) pin-temperature 70 °C, 10A, Protection class I or II
Line Filter	Standard and Medical Version, IEC 60939, IEC 60601-1, UL 1283, UL 544, EN 133 200, CSA C22.2 no. 8 <a href="#">Technical details</a>
MTBF	> 3'000'000 h acc. to MIL-HB-217 F

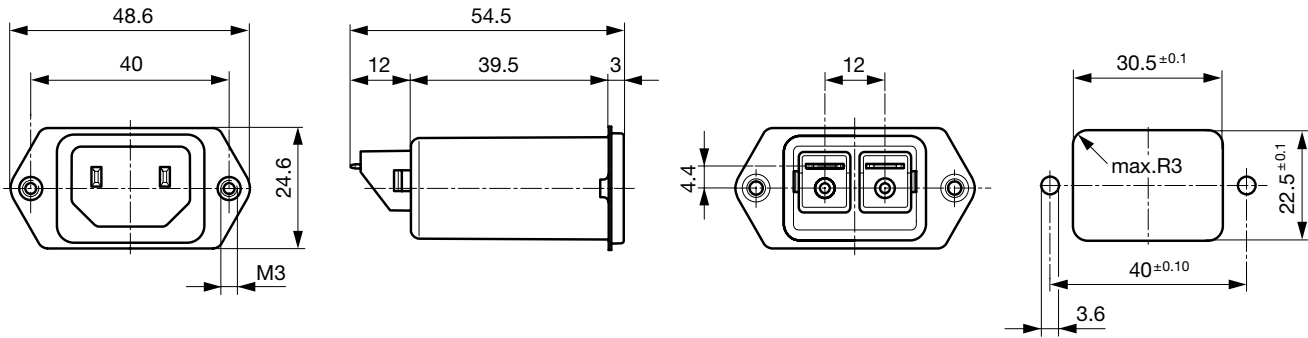
### Dimensions

Length  54.5 mm

Front or rear side mounting for screws with nuts or blind rivets (panel cutout for frontside mounting)

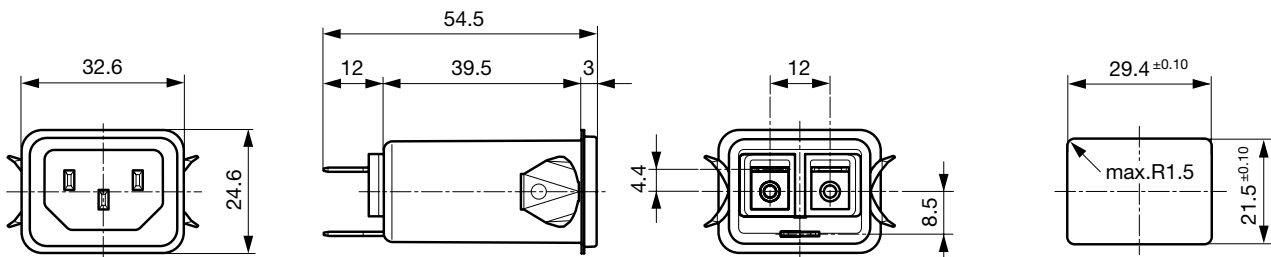


Rear side mounting with pre-formed, threaded holes for M3 screws (panel cutout for rear side mounting)



Dimensions for class II version also apply to class I

Snap-in mounting from front side



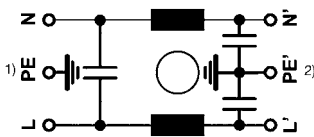
Dimensions for class I version also apply class II

Technical Data of Filter-Components

Rated Current [A]	Filter-Type	Inductances L [mH]	Capacitance CX [nF]	Capacitance CY [nF]	R [MΩ]
1	Standard Version	2 x 12	100	2.2	-
2	Standard Version	2 x 5.2	100	2.2	-
4	Standard Version	2 x 2	100	2.2	-
6	Standard Version	2 x 0.8	100	2.2	-
10	Standard Version	2 x 0.4	100	2.2	-
15	Standard Version	2 x 0.1	100	2.2	-
1	Medical Version (M5)	2 x 12	100	-	1
2	Medical Version (M5)	2 x 5.2	100	-	1
4	Medical Version (M5)	2 x 2	100	-	1
6	Medical Version (M5)	2 x 0.8	100	-	1
10	Medical Version (M5)	2 x 0.4	100	-	1
15	Medical Version (M5)	2 x 0.1	100	-	1
1	Bleed Resistor Version	2 x 12	100	2.2	1
2	Bleed Resistor Version	2 x 5.2	100	2.2	1
4	Bleed Resistor Version	2 x 2	100	2.2	1
6	Bleed Resistor Version	2 x 0.8	100	2.2	1
10	Bleed Resistor Version	2 x 0.4	100	2.2	1
15	Bleed Resistor Version	2 x 0.1	100	2.2	1

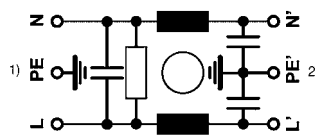
Diagrams

Standard version



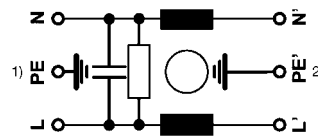
1) Line  
2) Load

Bleed resistor version



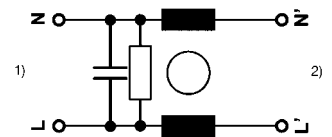
1) Line  
2) Load

Medical version M5



1) Line  
2) Load

Medical version M5, prot. class II



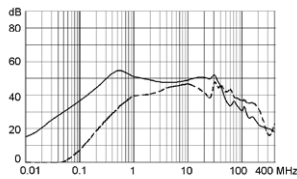
1) Line  
2) Load

Attenuation Loss

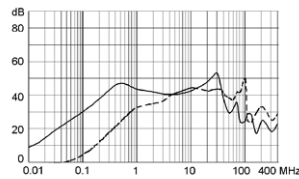
--- differential mode \_\_\_\_ common mode

Standard version

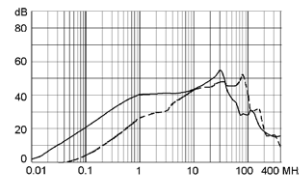
1 A



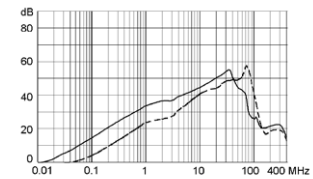
2 A



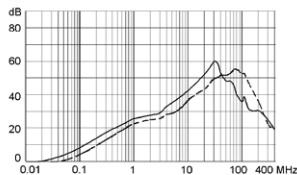
4 A



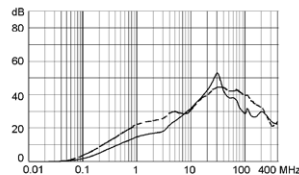
6 A



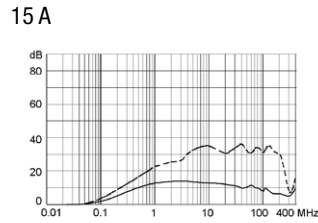
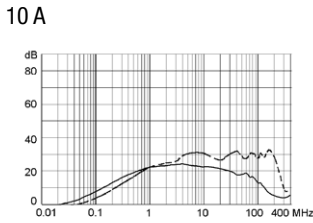
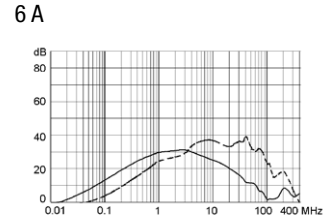
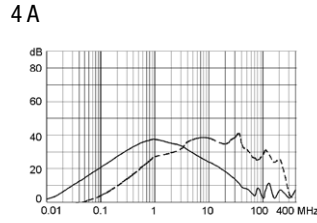
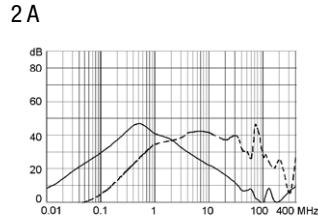
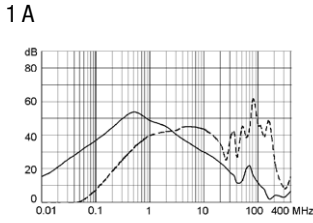
10 A



15 A



Medical version (M5)



**Variants**

[Distributor-Stock-Check](#) | [SCHURTER-Stock-Check](#) | [e-Store](#)

Rated Current [A]	Filter-Type	Panel mounting	Mounting side	Protection Class	Order Number
1	Standard Version			I	5120.0000.0
2	Standard Version			I	5120.0001.0
4	Standard Version			I	5120.0003.0
6	Standard Version			I	5120.0004.0
10	Standard Version			I	5120.0006.0
15	Standard Version			I	5120.0007.0
1	Standard Version			I	5120.1000.0
2	Standard Version			I	5120.1001.0
4	Standard Version			I	5120.1003.0
6	Standard Version			I	5120.1004.0
10	Standard Version			I	5120.1006.0
15	Standard Version			I	5120.1007.0
1	Medical Version (M5)			I	5120.0300.0
2	Medical Version (M5)			I	5120.0301.0
4	Medical Version (M5)			I	5120.0303.0
6	Medical Version (M5)			I	5120.0304.0
10	Medical Version (M5)			I	5120.0306.0
15	Medical Version (M5)			I	5120.0307.0
1	Medical Version (M5)			I	5120.1300.0
2	Medical Version (M5)			I	5120.1301.0
4	Medical Version (M5)			I	5120.1303.0
6	Medical Version (M5)			I	5120.1304.0
10	Medical Version (M5)			I	5120.1306.0
15	Medical Version (M5)			I	5120.1307.0
2	Medical Version (M5)			II	5120.0301.1
4	Medical Version (M5)			II	5120.0303.1
6	Medical Version (M5)			II	5120.0304.1
1	Medical Version (M5)			II	5120.1300.1
2	Medical Version (M5)			II	5120.1301.1
4	Medical Version (M5)			II	5120.1303.1
6	Medical Version (M5)			II	5120.1304.1
10	Medical Version (M5)			II	5120.1306.1
1	Bleed Resistor Version			I	5120.0200.0
2	Bleed Resistor Version			I	5120.0201.0
4	Bleed Resistor Version			I	5120.0203.0

Rated Current [A]	Filter-Type	Panel mounting	Mounting side	Protection Class	Order Number
6	Bleed Resistor Version			I	5120.0204.0
10	Bleed Resistor Version			I	5120.0206.0
15	Bleed Resistor Version			I	5120.0207.0
1	Bleed Resistor Version			I	5120.1200.0
2	Bleed Resistor Version			I	5120.1201.0
4	Bleed Resistor Version			I	5120.1203.0
6	Bleed Resistor Version			I	5120.1204.0
10	Bleed Resistor Version			I	5120.1206.0
15	Bleed Resistor Version			I	5120.1207.0

- 15 A version only according UL/CSA

- Type for screw-on mounting from rear side has pre-threaded holes for M3 screws

**Packaging unit** 10 Pcs

**Accessory**

**Description**



**Assorted Covers**  
Rear Cover

0859.0048



**Cord retaining kits**  
Cord retaining strain relieve

Flat head, Z

0888.0021

Flat head, E

4700.0005

Flat head, G

4700.0007

**Passende Dose**

**Category / Description**



**Appliance Outlet**

IEC appliance outlet F, screw-on mounting, front side, solder /quick connect terminal

4787

IEC appliance outlet F, screw-on mounting, front side, solder /quick connect terminal

4788

IEC appliance outlet F oder H, screw-on mounting, front side, solder/PCB/quick connect terminal

5091

IEC appliance outlet F oder H, screw-on mounting, front side, solder/quick connect terminal

5092

## Connector



IEC cord connector C15, rewirable, straight	0101
IEC cord connector C15A, rewirable, straight	0102
IEC cord connector C15A, rewirable, straight	0102-G
IEC cord connector C15A, rewirable, angled	0112
IEC cord connector C13, rewirable, angled	4012
IEC cord connector C13, rewirable, angled	4013
IEC cord connector C13, rewirable, straight	4020
IEC cord connector C13, rewirable, straight	4021
IEC cord connector C13, rewirable, straight	4022
IEC cord connector C13, rewirable, angled	4300-06

...

## Power Supply or Interconnection Cord



Power Cord with IEC Appliance Connector C13, angled, 70°C	0311
Power Cord with IEC Appliance Connector C13, angled, 70°C	3011
Power Cord with IEC Appliance Connector C13, angled, 70°C	3012
Power Cord with IEC Appliance Connector C13, angled, 70°C	3013
Power Cord with IEC Appliance Connector C13, 70°C	3020
Power Cord with IEC Appliance Connector C13, straight, 70°C	3027
Power Cord with IEC Appliance Connector C13, straight, 70°C	302U
Power Cord with IEC Appliance Connector C13, straight, 70°C	3030
Power Cord with IEC Appliance Connector C13, angled, 70°C	311L
Power Cord with IEC Appliance Connector C13, angled, 70°C	312L

...