

AC Filter Cost Optimized

Standard- or Medical-Filter



Description

- Chassis:
Screw-on mounting, from top
- Line filter in standard and medical version, 1-stage, standard attenuation
- Quick connect terminals 6.3 x 0.8 mm
- Especially effective against asymmetrical interferences in the frequency range from 10kHz up to 30MHz

Approvals

- VDE Certificate Number: 40004673
- UL File Number: E72928

Characteristics

- Compact design
- High attenuation at maximum resp. asymmetric load independent from the line impedance
- Especially designed for industrial applications such as: Frequency Converters, Stepper Motor Drives, UPS-Systems, Inverters
- Suitable for use in equipment according to IEC/UL 60950

Other versions on request

- Version with wire connection

References

Alternative: Standard version

Weblinks

[pdf-datasheet](#), [html-datasheet](#), [General Product Information](#), [Approvals](#), [CE declaration of conformity](#), [RoHS](#), [CHINA-RoHS](#), [REACH](#), [e-Shop](#), [SCHURTER-Stock-Check](#), [Distributor-Stock-Check](#), [Detailed request for product](#)

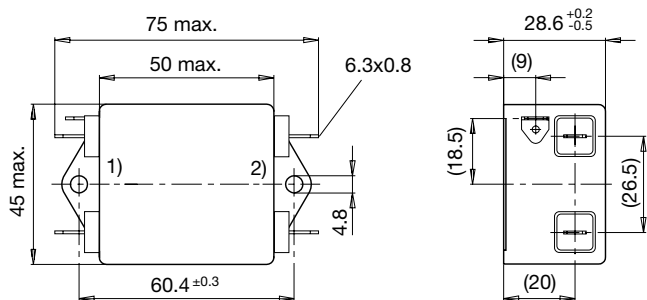
Technical Data

| | |
|---------------------------|---|
| Ratings IEC | 6 - 20A @ Ta 40 °C / 250VAC; 50Hz |
| Ratings UL/CSA | 6 - 20A @ Ta 40 °C / 125VAC; 60Hz |
| Leakage Current | standard < 0.5mA (250V / 60Hz) |
| Dielectric Strength | 1.7 kVDC between L-N 2.7 kVDC between L/N-PE Test voltage (2 sec) |
| Allowable Operation Temp. | -25 °C to 100 °C |
| Climatic Category | 25/100/21 acc. to IEC 60068-1 |
| Protection Class | Suitable for appliances with protection class I acc. to IEC 61140 |
| Terminal | Quick connect terminals 6.3 x 0.8 mm |
| Material: Housing | Aluminum |

| | |
|-------------|--|
| Line Filter | Standard and Medical Version, IEC 60939, UL 1283, CSA C22.2 no. 8 Technical Details |
| MTBF | > 200'000h acc. to MIL-HB-217 F |

Dimension

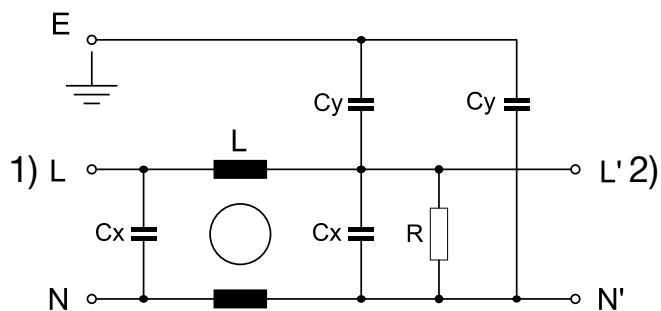
Case 73



- 1) Line
- 2) Load

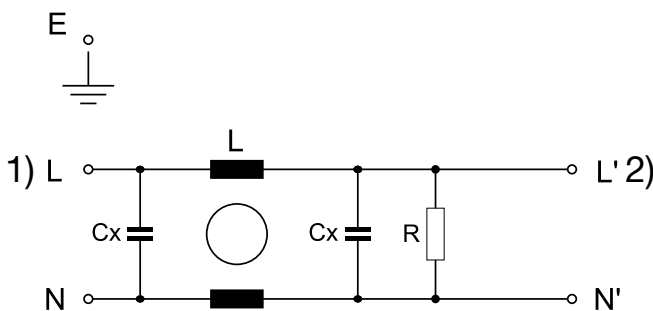
Diagrams

Standard version



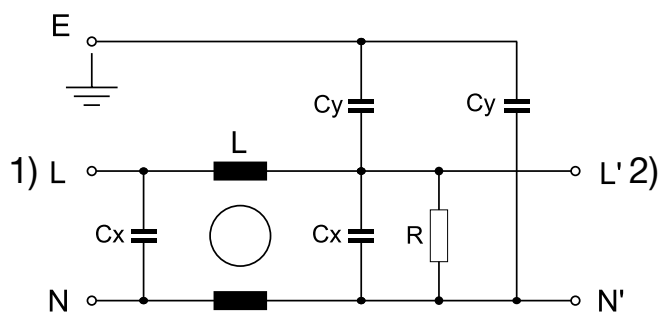
- 1) Line
- 2) Load

Medical version (M5)



- 1) Line
- 2) Load

Medical version (M80)



- 1) Line
- 2) Load

Attenuation Loss

Standard version

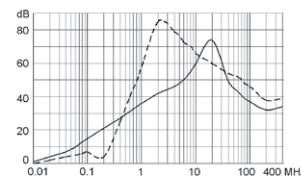
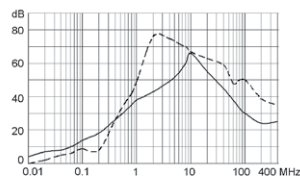
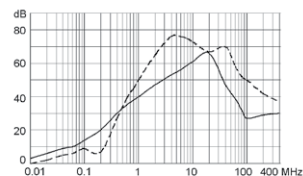
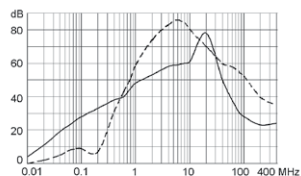
6 A

10 A

16 A

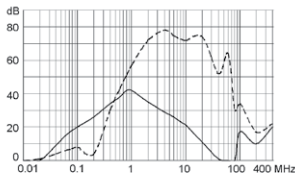
20 A

--- differential mode ____ common mode

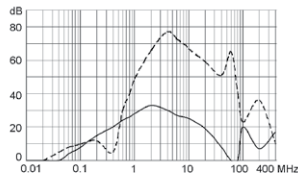


Medical version (M5)

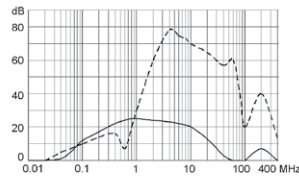
6 A



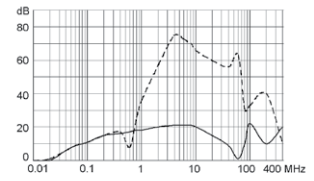
10 A



16 A

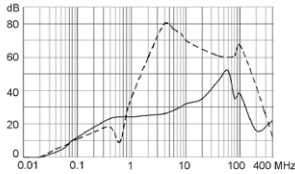


20 A

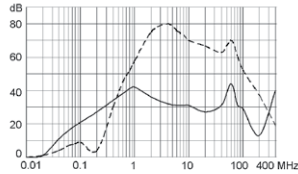


Medical version (M80)

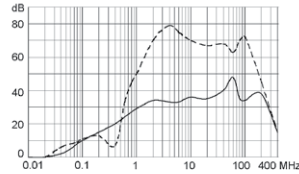
6 A



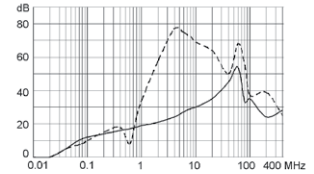
10 A



16 A



20 A



All Variants

| Rated Current [A] | Filter-Type | L [mH] | Cx (X2) [µF] | Cy (Y2) [nF] | Weight [g] | Housing | R [MΩ] | Order Number |
|-------------------|-----------------------|----------|--------------|--------------|------------|---------|--------|--------------|
| 6 | Standard Version | 2 x 1.8 | 0.1 | 4.7 | 116 g | 73 | 1 | 5500.2031 |
| 10 | Standard Version | 2 x 0.82 | 0.1 | 4.7 | 122 g | 73 | 1 | 5500.2032 |
| 16 | Standard Version | 2 x 0.64 | 0.1 | 4.7 | 131 g | 73 | 1 | 5500.2033 |
| 20 | Standard Version | 2 x 0.5 | 0.1 | 4.7 | 135 g | 73 | 1 | 5500.2034 |
| 6 | Medical Version (M5) | 2 x 1.8 | 0.1 | - | 116 g | 73 | 1 | 5500.2072 |
| 10 | Medical Version (M5) | 2 x 0.82 | 0.1 | - | 122 g | 73 | 1 | 5500.2073 |
| 16 | Medical Version (M5) | 2 x 0.64 | 0.1 | - | 131 g | 73 | 1 | 5500.2074 |
| 20 | Medical Version (M5) | 2 x 0.5 | 0.1 | - | 160 g | 73 | 1 | 5500.2076 |
| 6 | Medical Version (M80) | 2 x 1.8 | 0.1 | 0.47 | 116 g | 73 | 1 | 5500.2086 |
| 10 | Medical Version (M80) | 2 x 0.82 | 0.1 | 0.47 | 122 g | 73 | 1 | 5500.2087 |
| 16 | Medical Version (M80) | 2 x 0.64 | 0.1 | 0.47 | 132.4 g | 73 | 1 | 5500.2075 |
| 20 | Medical Version (M80) | 2 x 0.5 | 0.1 | 0.47 | 160 g | 73 | 1 | 5500.2088 |

Most Popular.

Availability for all products can be searched real-time: <http://www.schurter.com/en/Stock-Check/Stock-Check-SCHURTER>

Packaging unit

10 Pcs