

AC Filter Cost Optimized

Standard- or Medical-Filter



Description

- Chassis:
Screw-on mounting, from top
- Line filter in standard and medical version, 1-stage, standard attenuation
- Quick connect terminals 6.3 x 0.8 mm
- Especially effective against asymmetrical interferences in the frequency range from 10kHz up to 30MHz

Approvals

- VDE License Number: 40004673
- UL License Number: E72928

Characteristics

- Compact design
- High attenuation at maximum resp. asymmetric load independent from the line impedance
- Especially designed for industrial applications such as: Frequency Converters, Stepper Motor Drives, UPS-Systems, Inverters
- Qualified for use in equipment according IEC/EN 60950

Other versions on request

- Version with wire connection
- Medical version M80

References

[General Product Information](#)

Weblinks

[Approvals](#), [RoHS](#), [CHINA-RoHS](#), [Mating Connectors](#), [e-Store](#), [Distributor-Stock-Check](#), [Accessories](#)

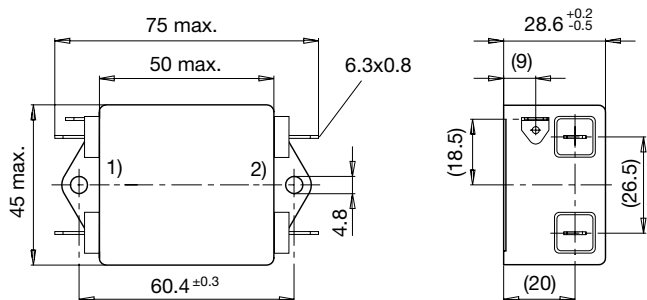
Technical Data

Ratings IEC	6 - 20A @ Ta 40 °C / 250VAC; 50Hz
Ratings UL/CSA	6 - 20A @ Ta 40 °C / 125VAC; 60Hz
Leakage Current	standard < 0.5 mA (250V / 60Hz)
Dielectric Strength	> 1.7 kVDC between L-N
	> 2.7 kVDC between L/N-PE Test voltage (2 sec)
Allowable Operation Temp.	-25 °C to 100 °C
Climatic Category	25/100/21 acc. to IEC 60068-1
Protection Class	Suitable for appliances with protection class 1 acc. to IEC 61140
Terminal	Quick connect terminals 6.3 x 0.8 mm
Material: Housing	Alu. anodised

Line Filter	Standard and Medical Version, IEC 60939, IEC 60601-1, UL 1283, UL 544, EN 133 200, CSA C22.2 no. 8 Technical details
MTBF	> 200'000h acc. to MIL-HB-217 F

Dimensions

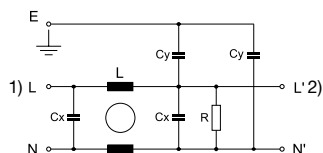
Case 73



- 1) Line
- 2) Load

Diagrams

Standard version



- 1) Line
- 2) Load

Attenuation Loss

--- differential mode ____ common mode

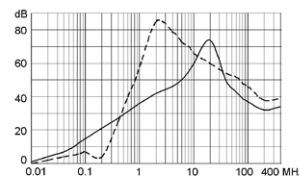
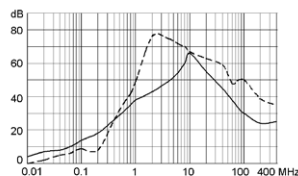
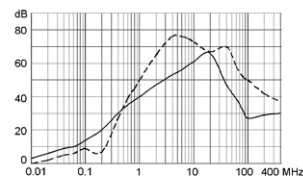
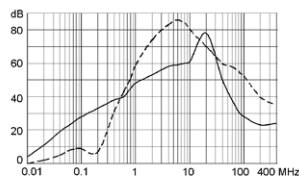
Standard version

6 A

10 A

16 A

20 A



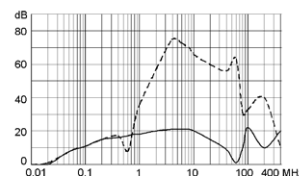
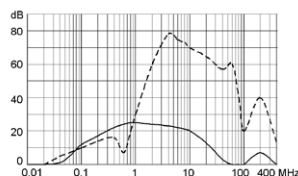
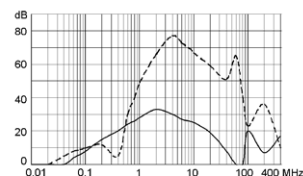
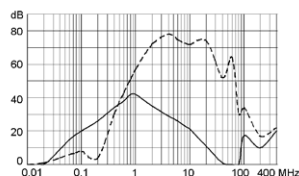
Medical version (M5)

6 A

10 A

16 A

20 A



Variants

Rated Current [A]	Filter-Type	L [mH]	Cx (X2) [μF]	Cy (Y2) [nF]	Weight [g]	Housing	R [MΩ]	Order Number
6	Standard Version	2 x 1.8	0.1	4.7	116	73	1	5500.2031
10	Standard Version	2 x 0.82	0.1	4.7	122	73	1	5500.2032
16	Standard Version	2 x 0.64	0.1	4.7	131	73	1	5500.2033
20	Standard Version	2 x 0.5	0.1	4.7	135	73	1	5500.2034
6	Medical Version (M5)	2 x 1.8	0.1	-	116	73	1	5500.2072
10	Medical Version (M5)	2 x 0.82	0.1	-	122	73	1	5500.2073
16	Medical Version (M5)	2 x 0.64	0.1	-	131	73	1	5500.2074
20	Medical Version (M5)	2 x 0.5	0.1	-	160	73	1	5500.2076

Packaging unit 10 Pcs