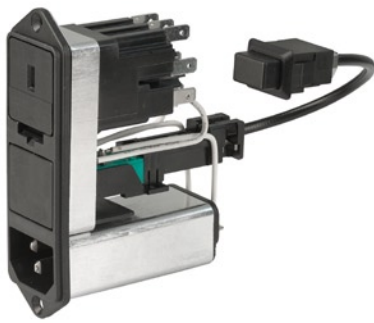


With fuseholder 5x20 mm/6.3x32 mm, voltage sel. (series-parallel)

Standard- or Medical-Filter



C14

 70° C



Description

- Panel Mount:
Screw-on from front side
- 5 Functions:
Inlet, Line switch for bowdencable actuation, Fuseholder with interchangeable fuse drawer for Fuse-links 5 x 20 mm or 6.3 x 32 mm, Voltage selector (series-parallel), Line filter in standard and medical version
- Quick connect terminals 4.8 x 0.8 mm
- Alternative: version without line filter [KG-Bowdencable](#)

Approvals

- VDE License Number: 40004665
- UL License Number: E76360

Characteristics

- All single elements are already partially wired
- For added safety "Extra-Safe" fuse drawers are available
Fuse drawer meets requirements of medical standard IEC/EN 60601-1
The fuse drawer can only be opened with the aid of a tool
The fuseholder is accessible from the equipment front
- Qualified for use in equipment according IEC/EN 60950

References

[General Product Information](#)

Weblinks

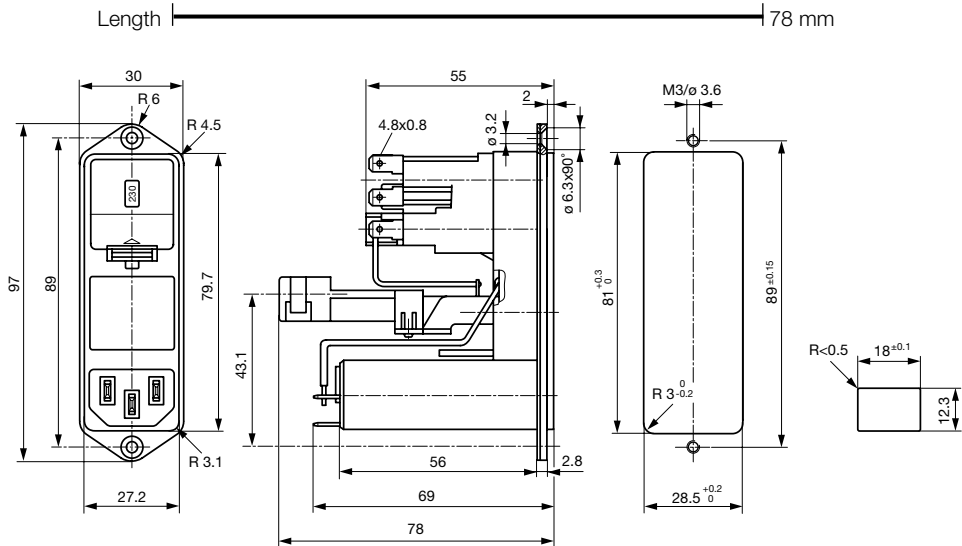
[Approvals](#), [RoHS](#), [CHINA-RoHS](#), [e-Store](#), [SCHURTER-Stock-Check](#), [Distributor-Stock-Check](#)

Technical Data

Ratings IEC	1 - 6A @ Ta 40 °C / 250VAC; Hz 50
Ratings UL/CSA	1 - 8A @ Ta 40 °C / 125VAC; 60Hz
Leakage Current	standard < 0.5 mA (250 V / 60Hz) medical < 5 µA (250 V / 60 Hz)
Dielectric Strength	> 1.7 kVDC between L-N > 2.7 kVDC between L/N-PE Test voltage (2 sec)
Allowable Operation Temp.	-25 °C to 85 °C
Climatic Category	25/085/21 acc. to IEC 60068-1
Degree of Protection	from front side IP 40 acc. to IEC 60529
Protection Class	Suitable for appliances with protection class I acc. to IEC 61140
Terminal	Quick connect terminals 4.8 x 0.8 mm
Panel Thickness s	Screw-on: max 8 mm Mounting screw torque max 0.5 Nm
Material: Housing	Thermoplastic, black, UL 94V-0

Appliance-Inlet /-Outlet	C14 acc. to IEC/EN 60320-1, UL 498, CSA C22.2 no. 42 (for cold condition) pin-temperature 70 °C, 10A, Protection class I
Fuseholder	1 or 2 pole, Shocksafe category PC2 acc. to IEC 60127-6, for fuse-links 5 x 20 or 6.3 x 32 mm
Rated Power Acceptance @ Ta 23 °C	5 x 20: 2.5W (1 pole)/ 2W (2-pole) per pole 6.3 x 32: 3.15W (1 pole)/ 2.5W (2-pole) per pole
Power Acceptance @ Ta > 23°C	Admissible power acceptance at higher ambient temperature see derating curves
Line Switch	Switch for bowdencable 2-pole, non-illuminated, acc. to IEC 61058-1 Technical details
Voltage selector	series-parallel, 4, 3 or 2 switch positions or usable as 2-pole change-over switch
Line Filter	Standard and Medical Version, IEC 60939, IEC 60601-1, UL 1283, UL 544, EN 133 200, CSA C22.2 no. 8 Technical details
MTBF	> 1'100'000h acc. to MIL-HB-217 F

Dimensions CG bowden cable



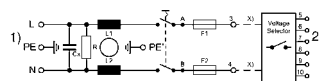
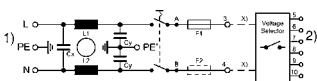
Technical Data of Filter-Components

Rated Current [A]	Filter-Type	Inductances L [mH]	Capacitance CX [nF]	Capacitance CY [nF]	R [MΩ]
1	Standard Version	2 x 10	68	2.2	-
2	Standard Version	2 x 4	68	2.2	-
4	Standard Version	2 x 1.5	68	2.2	-
6	Standard Version	2 x 0.8	68	2.2	-
1	Medical Version (M5)	2 x 10	68	-	1
2	Medical Version (M5)	2 x 4	68	-	1
4	Medical Version (M5)	2 x 1.5	68	-	1
6	Medical Version (M5)	2 x 0.8	68	-	1

Diagrams

Standard version
with fuseholder 1- or 2-pole

Medical version
with fuseholder 2-pole

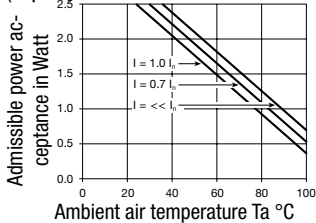


1) Line
2) Load

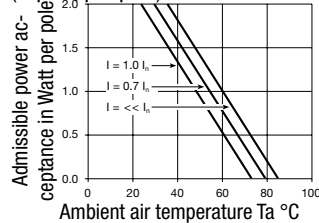
1) Line
2) Load

Derating Curves

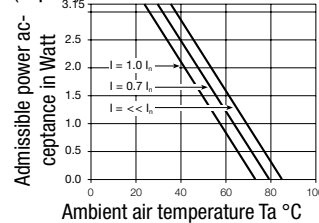
Fuses 5 x 20 mm
(1-pole)



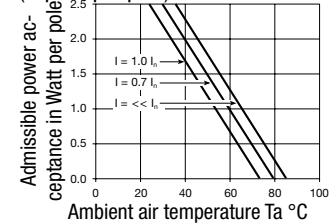
Fuses 5 x 20 mm
(2-pole, per pole)



Fuses 6,3 x 32 mm
(1-pole)



Fuses 6,3 x 32 mm
(2-pole, per pole)

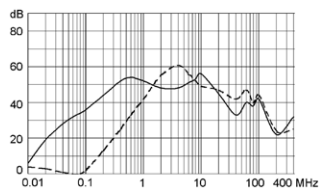


Attenuation Loss

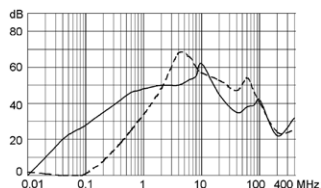
--- differential mode ____ common mode

Standard version

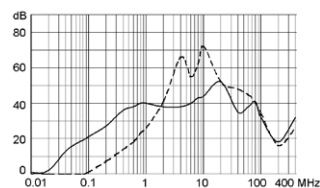
1 A



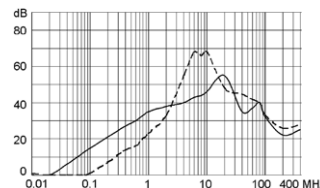
2 A



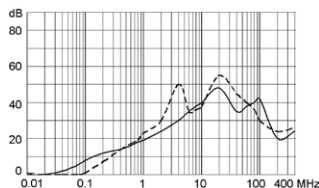
4 A



6 A

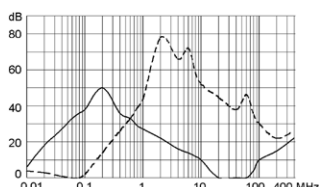


10 A

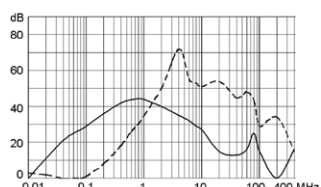


Medical version (M5)

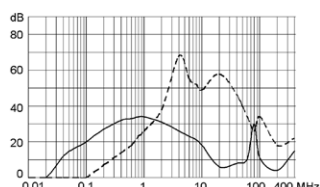
1 A



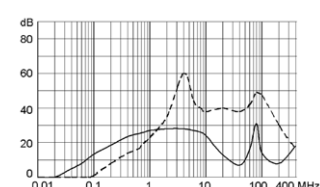
2 A



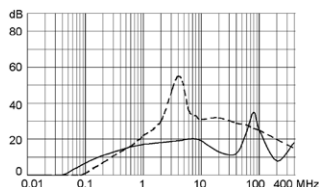
4 A



6 A



10 A



Variants

[Distributor-Stock-Check](#) | [SCHURTER-Stock-Check](#) | [e-Store](#)

Fuse drawer, voltage selector insert and Bowdencable must be ordered separately.

Type	Rated Current [A]	Filter-Type	Fuseholder	Line Switch	Line Switch	Order Number
CG-Bowdencable	1	Standard Version	2-pole	2-pole	Rocker switch	CG10.6199.151
CG-Bowdencable	2	Standard Version	2-pole	2-pole	Rocker switch	CG20.6199.151
CG-Bowdencable	4	Standard Version	2-pole	2-pole	Switch for bowdencable	CG30.6199.151
CG-Bowdencable	6	Standard Version	2-pole	2-pole	Rocker switch	CG40.6199.151
CG-Bowdencable	1	Medical Version (M5)	2-pole	2-pole	Switch for bowdencable	CGG0.6199.151
CG-Bowdencable	2	Medical Version (M5)	2-pole	2-pole	Rocker switch	CGA0.6199.151
CG-Bowdencable	4	Medical Version (M5)	2-pole	2-pole	Switch for bowdencable	CGC0.6199.151
CG-Bowdencable	6	Medical Version (M5)	2-pole	2-pole	Switch for bowdencable	CGE0.6199.151

Packaging unit

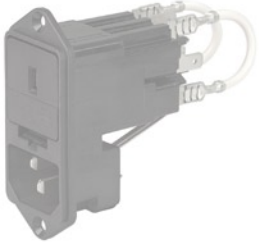
10 Pcs

Required Accessory

Description



[Bowdencables incl. accessory](#)
Bowden Cable for Power Entry Modules



[Jumper Wire 1](#)
Connection with Starved Cable



[Fusedrawer 1](#)
Drawer for fuse links 5x20mm resp. 6.3x32mm



[Voltage Selectors Insert 1](#)
Voltage Selector Insert to KE, CE, KG, CG

Accessory



[Cord retaining kits](#)
Cord retaining strain relieve
