

Compensated High Current Choke, 1-phase



Description

- Current compensated choke
- 1-phase choke
- Flexible wire
- Flange for mounting onto printed circuit board
- Fully potted resin

Standards

- EN 60938
- UL 1283
- CSA 22.2 no 8

Applications

- Placed in front of frequency converter
- Stepper motor drives
- UPS-systems
- Inverter

Weblinks

[pdf-datasheet](#), [html-datasheet](#), [General Product Information](#), [Approvals](#), [CE declaration of conformity](#), [RoHS](#), [CHINA-RoHS](#), [REACH](#), [Distributor-Stock-Check](#), [Detailed request for product](#)

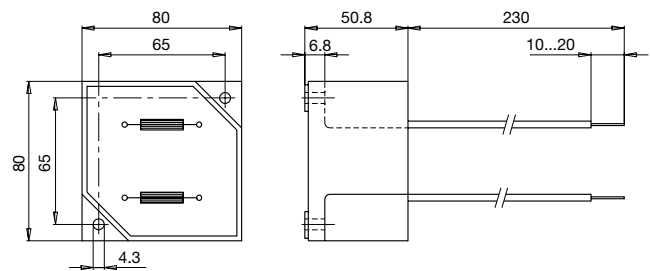
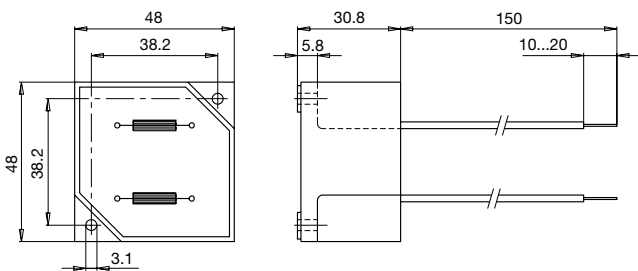
Technical Data

Rated voltage	up to 540 VAC	Test Voltage	2.5 kV, 50 Hz, 2 sec, winding to winding
	up to 760 VDC	Isolation Voltage	2.5 kV, 50 Hz, 2 sec, winding to ambient
Rated Current	10 - 50 A @ Ta 40 °C	Climatic Category	25/100/21 acc. to IEC 60068-1
Rated inductance	1.1 - 12 mH, Tol. -30% +50%	Allowable Operation Temp.	-25 °C to 100 °C
Power Operating Frequency	50 - 400 Hz		
Terminal Type	Flexible wire		
Weight	145 - 1865 g		
Material: Housing	UL 94V-0		
Sealing Compound	UL 94V-0		

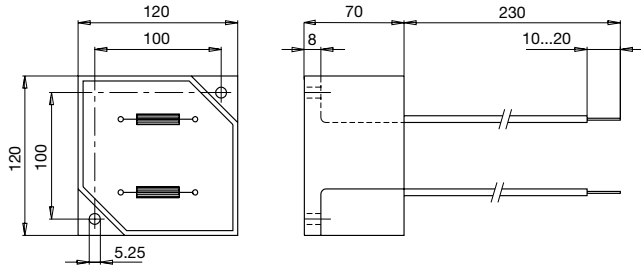
Dimension

Case 29-2W

Case 31-2W

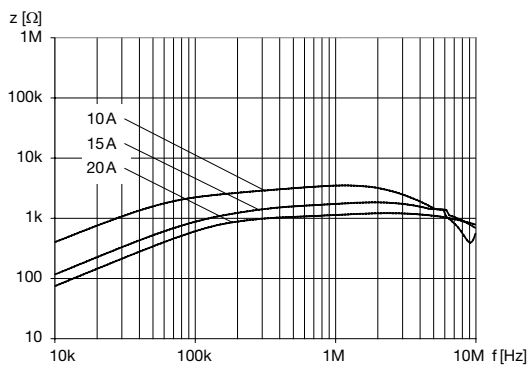


Case 33-2W

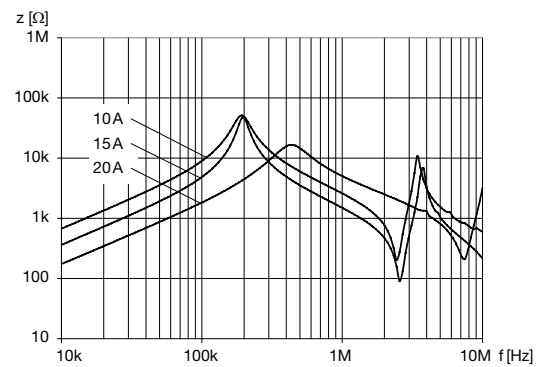


Impedance curves

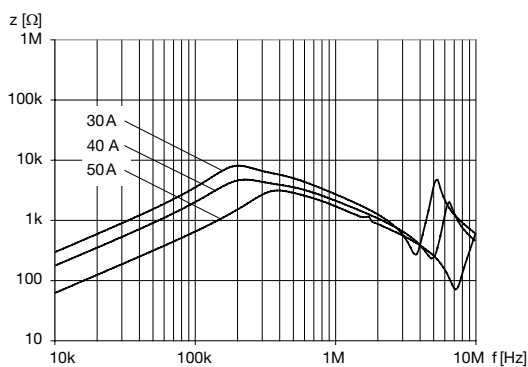
DKIP_0229_xxxx



DKIP_0231_xxxx



DKIP_0233_xxxx



All Variants

I_n [A]	L_n [mH]	R_{Cu} [m Ω]	Power _{loss} [W]	f_{RES} [MHz]	Copper ϕ [mm]	Weight [g]	Housings	Packing unit [pcs.]	Order Number
10	5	18	3.6	0.35	1.25	145 g	29-2W	12	DKIP-0229-1005
15	2	8	3.6	0.6	1.6	145 g	29-2W	12	DKIP-0229-1502
20	1.1	6	4.8	2.5	1.8	145 g	29-2W	12	DKIP-0229-2001
10	12	40	8	0.15	1.25	477 g	31-2W	2	DKIP-0231-1012
15	5	17	7.6	0.33	1.6	525 g	31-2W	2	DKIP-0231-1505
20	3	10	8	0.55	1.8	506 g	31-2W	2	DKIP-0231-2003
30	5	12.5	22.5	0.26	2.24	1600 g	33-2W	1	DKIP-0233-3005

40	3	6	19.2	0.3	1.5 x 4.5	1830 g	33-2W	1	DKIP-0233-4003
50	2	5	25	0.25	1.5 x 4.5	1865 g	33-2W	1	DKIP-0233-5002

Most Popular.

Availability for all products can be searched real-time:<http://www.schurter.com/Stock-Check/Stock-Check-SCHURTER>