

TECHNICAL DATA  
DATA SHEET 5420, REV. -

## THREE PHASE FULL WAVE RECTIFIER ASSEMBLY

**DESCRIPTION:** Super fast recovery, fast recovery, general purpose, 3-phase full wave rectifier assembly.

**MAXIMUM RATINGS / ELECTRICAL CHARACTERISTICS:** All ratings are at  $t_c = 25^\circ\text{C}$  unless otherwise specified.

**MAXIMUM OPERATING AND STORAGE TEMPERATURE RANGE:** ( $t_c, t_{stg}$ ) =  $-55^\circ\text{C}$  to  $+150^\circ\text{C}$ .

**OPTION:** Add suffix "S" to the part number for S-100 screening.

**DIELECTRIC:** A Dielectric Withstanding Voltage test will be performed with the metal case of the assembly connected to ground and all terminals connected to the high potential side of a DC power supply or scope display test. Voltage applied shall be 2800 Vdc and held for 10 seconds.

**WEIGHT:** 32gms max.

TYPE NUMBER	PEAK INVERSE VOLTAGE (PER LEG)	MAX. AVERAGE DC OUTPUT CURRENT		PEAK 1 CYCLE SURGE CURRENT $t_p = 8.3 \text{ msec}$ (PER LEG)	MAX. FORWARD VOLTAGE DROP (PER LEG)		MAX. REVERSE CURRENT $I_r$ @ PIV (PER LEG) ( $\mu\text{A}$ )		MAX. THERMAL RESISTANCE $R_{\theta JC}$ (PER LEG)	MAX. REVERSE REC. TIME (PER LEG) $I_F = 0.5\text{A}, I_R = 1.0\text{A}, T_{RR} = 0.25\text{A}$
	Volts	$55^\circ\text{C}$	$100^\circ\text{C}$	Amps	Volts	Amps	$25^\circ\text{C}$	$100^\circ\text{C}$	$^\circ\text{C/W}$	ns
SC3BA05	50	18	12.5	80	1.1	5	3	60	1.7	40
S25A305	50	18	15	80	1.30	9	3	100	1.7	5000
S25A305HE	50	18	12.5	80	1.10	5	5	100	1.7	40
S25A310	100	18	15	80	1.30	9	3	100	1.7	5000
S25A310FR	100	20	15	80	1.60	9	5	100	1.7	180
S25A310HE	100	18	12.5	80	1.10	5	5	100	1.7	40
S25A315HE	150	18	12.5	80	1.10	5	5	100	1.7	40
S25A320	200	18	15	80	1.30	9	3	100	1.7	5000
S25A320FR	200	20	15	80	1.60	9	5	100	1.7	180
S25A320S7	200	18	13.5	80	1.75	9	5	100	2.5	85
S25A340	400	18	15	80	1.30	9	3	100	1.7	5000
S25A340FR	400	20	15	80	1.60	9	5	100	1.7	180

# SENSITRON

## SEMICONDUCTOR

SC3BA05,S25A305,S25A305HE,S25A310,S25A310FR,S25A310HE,S25A315HE,S25A20,S25A320FR,S25A320S7,S25A340,S25A340FR,S25A340S7,SC3BA6,S25A360,S25A360FR,S25A360S7,S25A380,S25A3100,S25A3100FR

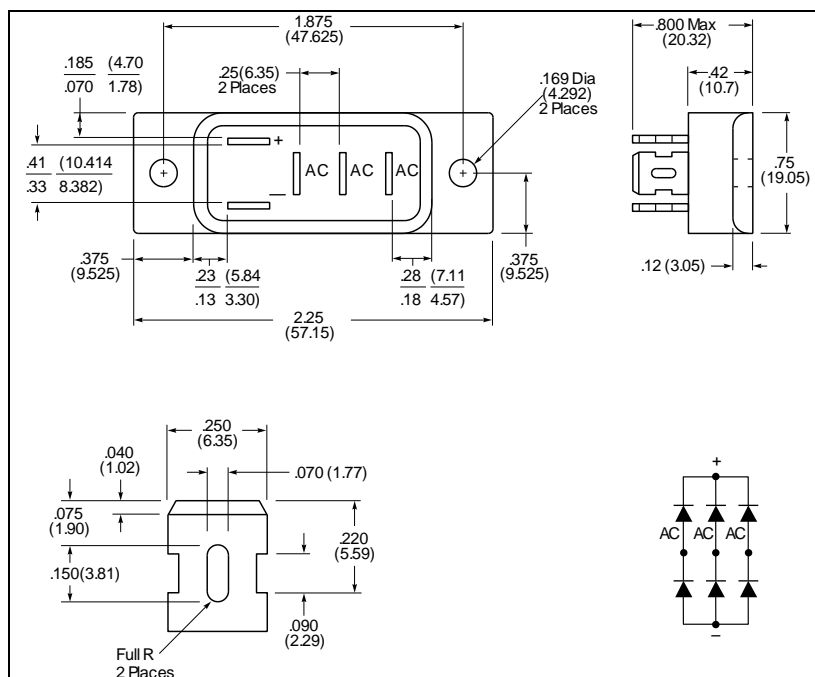
### TECHNICAL DATA

#### DATA SHEET 5420, REV. -

TYPE NUMBER	PEAK INVERSE VOLTAGE (PER LEG)	MAX. AVERAGE DC OUTPUT CURRENT		PEAK 1 CYCLE SURGE CURRENT t <sub>p</sub> = 8.3 msec (PER LEG)	MAX. FORWARD VOLTAGE DROP (PER LEG)		MAX. REVERSE CURRENT I <sub>r</sub> @ PIV (PER LEG) (μA)		MAX. THERMAL RESISTANCE R <sub>θJC</sub> (PER LEG)	MAX. REVERSE REC. TIME (PERLEG) I <sub>F</sub> = 0.5A, I <sub>R</sub> = 1.0A, T <sub>RR</sub> = 0.25A
		Volts	55°C		100°C	Amps	Volts	Amps		
S25A340S7	400	18	13.5	80	1.75	9	5	100	2.5	85
SC3BA6	600	18	15	80	1.00	3	5	100	1.7	5000
S25A360	600	18	15	80	1.30	9	3	100	1.7	5000
S25A360FR	600	20	15	80	1.60	9	5	100	1.7	180
S25A360S7	600	18	13.5	80	1.75	9	5	100	2.5	85
S25A380	800	18	15	80	1.30	9	3	100	1.7	5000
S25A3100	1000	18	15	80	1.30	9	3	100	1.7	5000
S25A3100FR	1000	18	13.5	80	1.75	9	5	100	2.5	180

**TECHNICAL DATA**  
**DATA SHEET 5420, REV. -**

**MECHANICAL DIMENSIONS: In Inches / mm**



**CAT. 404**

**CASE:** Black anodized  
**POTTING SURFACE:** Uncontrolled

**DISCLAIMER:**

- 1- The information given herein, including the specifications and dimensions, is subject to change without prior notice to improve product characteristics. Before ordering, purchasers are advised to contact the Sensitron Semiconductor sales department for the latest version of the datasheet(s).
- 2- In cases where extremely high reliability is required (such as use in nuclear power control, aerospace and aviation, traffic equipment, medical equipment, and safety equipment), safety should be ensured by using semiconductor devices that feature assured safety or by means of users' fail-safe precautions or other arrangement.
- 3- In no event shall Sensitron Semiconductor be liable for any damages that may result from an accident or any other cause during operation of the user's units according to the datasheet(s). Sensitron Semiconductor assumes no responsibility for any intellectual property claims or any other problems that may result from applications of information, products or circuits described in the datasheets.
- 4- In no event shall Sensitron Semiconductor be liable for any failure in a semiconductor device or any secondary damage resulting from use at a value exceeding the absolute maximum rating.
- 5- No license is granted by the datasheet(s) under any patents or other rights of any third party or Sensitron Semiconductor.
- 6- The datasheet(s) may not be reproduced or duplicated, in any form, in whole or part, without the expressed written permission of Sensitron Semiconductor.
- 7- The products (technologies) described in the datasheet(s) are not to be provided to any party whose purpose in their application will hinder maintenance of international peace and safety nor are they to be applied to that purpose by their direct purchasers or any third party. When exporting these products (technologies), the necessary procedures are to be taken in accordance with related laws and regulations.