
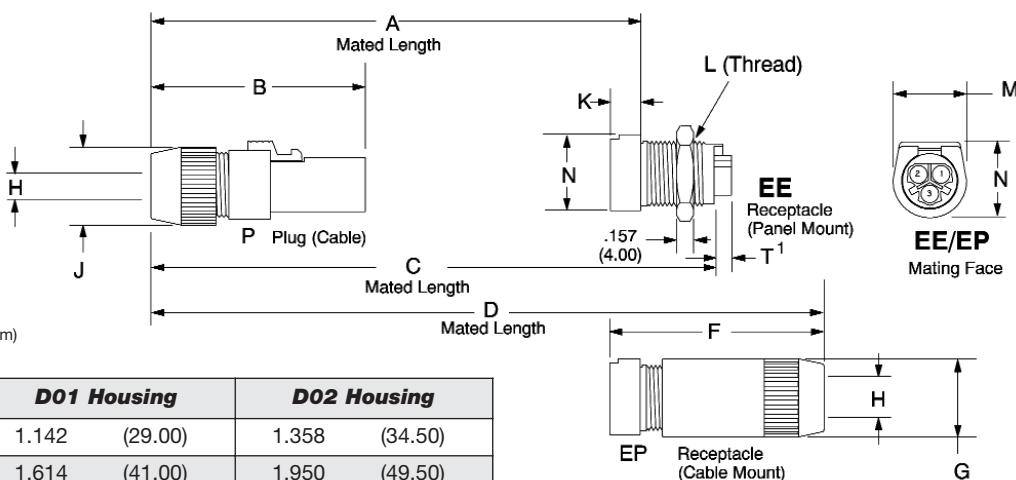




CIRCULAR PLASTIC CONNECTORS CONTACT VERSIONS

- 3, 4, 7, 9, 12 & 25 position models
- 1 to 8 amps per contact
- Mixed signal and power or coax available
-  recognized components File No. 102195
- Each connector half accepts pins or sockets
- High impact plastic body
- Quick disconnect push button release
- Alignment and polarization provided by housing
- Crimp, solder cup, and pc contacts
- Color coding available

Connector Dimensions

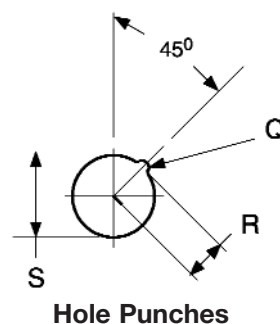


NOTE:
1) Dimensions in inches (mm)

Dimension	D01 Housing		D02 Housing	
A	1.142	(29.00)	1.358	(34.50)
B	1.614	(41.00)	1.950	(49.50)
C	1.732	(44.00)	2.087	(53.00)
D	2.4	(61.00)	2.953	(75.00)
F	1.5	(38.00)	1.772	(45.00)
G Dia.	.512	(13.00)	.709	(18.00)
H Dia.	.118 .216	(3.00) Min. (5.50) Max.	.197 .315	(5.00) Min. (8.00) Max.
J Dia.	.472	(12.00)	.709	(18.00)
K	.161	(4.10)	.278	(7.00)
L	M11 X 1.00 Thd.		M15 X 1.00 Thd.	
M	.512	(13.00)	.669	(17.00)
N	.512	(13.00)	.689	(17.50)
Q Dia.	.126	(3.20)	.100	(2.54)
R	.220	(5.60)	.295	(7.50)
S Dia.	.441	(11.20)	.598	(15.20)
T ¹	.157	(4.00)	.157	(4.00)

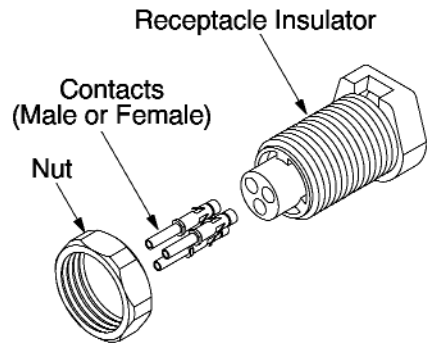
NOTES:
1) D02EE315 Dim. T is 0.256 (6.50)
D02EE125 Dim. T is 0.000 (0.00)
D02EE2504 Dim. T is 0.000 (0.00)
2) Recommended tightening torque for panel mount receptacle (.452-.678 N•M) for both D01 & D02.

Mounting Dimensions

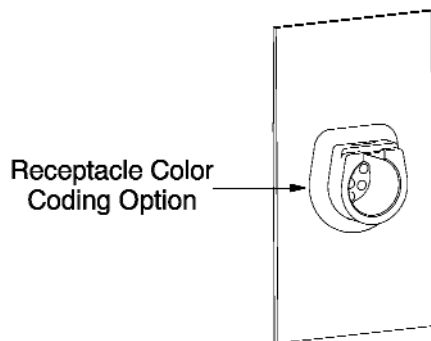
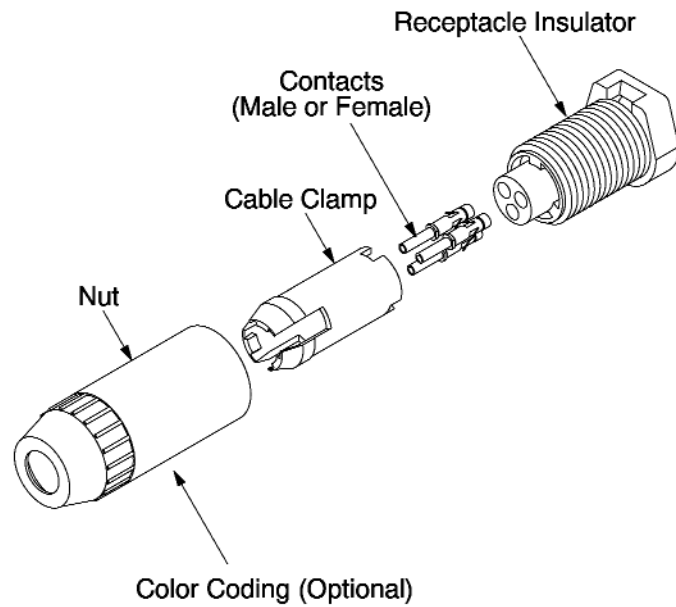


Part Number	Series	Maximum Recommended Panel in Steel	Maximum Recommended Panel in Alum.
T1903	D01	0.048 (1.25)	0.075 (1.90)
T1904	D02	0.062 (1.60)	0.094 (2.40)

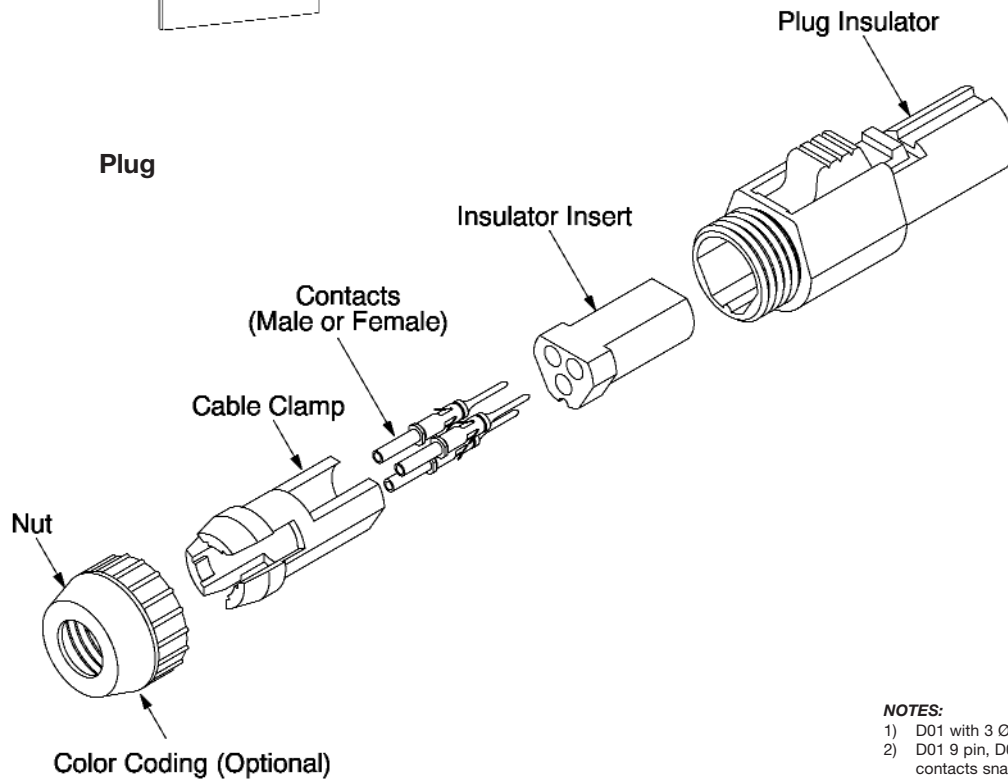
Panel Mount Receptacle



Cable Mount Receptacle



Plug



NOTES:

- 1) D01 with 3 \varnothing .024 (0.60) Contacts Shown.
- 2) D01 9 pin, D02 12 and 25 pin have no clip, contacts snap into insert

D01 GENERAL SPECIFICATIONS

	3 Pin	4 Pin	9 Pin
Contact Diameter	.024 (0.60)	.024 (0.60)	.016 (0.40)
Current Rating (amps)	4	4	1
Contact Resistance (milliohms)	<5	<5	<8
Contact Extraction Force Each (oz.)	.5 to 2	.5 to 2	.6 to 1.6
Contact Life Cycles	100,000	100,000	100,000
Breakdown Voltage Between Contacts	>2250V	>2250V	>1000V
Dielectric Withstanding Voltage	1650V	1650V	750V
Contact Material	BeCu wires and brass body (socket)		
Plating	Brass (pin) Gold over Nickel		
Insulation Resistance	>10 ³ megohms @500 VDC		
Temperature Rating			
Polycarbonate	-40°C to +85°C		
Polysulfone	-40°C to +125°C*		
Polyetherimide	_____		
			-40°C to +125°C*

ACCESSORIES

Crimp Tool	AFM8 or (M22520/2-01)	AFM8 or (M22520/2-01)	AFM8 or (M22520/2-01)
Positioner	K547	K547	T1914
Removal Tool	S/DEM1.0060	S/DEM1.0060	
Insertion Tool	T1866	T1866	T1916


D02 GENERAL SPECIFICATIONS


	3 Pin	7 Pin	9 Pin	12 Pin	25 Pin
Contact Diameter	.059 (1.50)	.024 (0.60)	.024 (0.60)	.018 (0.50)	.016 (0.40)
Current Rating (amps)	8	4	4	2.5	1
Contact Resistance (milliohms)	<2	<5	<5	<8	<8
Extraction Force (oz.)	1.8 to 5.4	.5 to 2	.5 to 2	.3 to 1.6	.3 to 1.6
Contact Life Cycles	100,000	100,000	100,000	100,000	100,000
Breakdown Voltage Between Contacts	>2250	>2000	>1560	>1000	>1000
Dielectric Withstanding Voltage	1650	1500	1150	750	750
Contact Material	BeCu wires and brass body (socket)				
Plating	Brass (pin) Gold over nickel				
Insulation Resistance	>10 ³ megohms @500 VDC				
Temperature Rating					
Polycarbonate	-40°C to +85°C				
Polysulfone	-40°C to +125°C*				
Polyetherimide	_____				
					-40°C to +125°C*


ACCESSORIES

Crimp Tool	AF8	AFM8 or M22520/2-01	AFM8 or M22520/2-01	AFM8 or M22520/2-01
Positioner	TP688	K623	T870	T1914
Removal Tool	S/DEM5.0150	S/DEM1.0060	_____	_____
Insertion Tool	T1888	T1866	T1271	T1916

*If color coding option is specified, maximum temperature rating is +85°C

D01 3 Pin  <p>Receptacle seen from mating side</p>	Housing	Part Numbers*
	Receptacle Panel Mount Receptacle Cable Plug	D01EEB306NT D01EPB306NT D01PB306NT
	Contacts	Part Numbers*
	Crimp Socket – 22-26 AWG Crimp Socket – 18-20 AWG Solder Cup Socket – up to 22 AWG Crimp Pin – 22-26 AWG Crimp Pin –18-20 AWG Solder Cup Pin – up to 22 AWG	YSK006-011AH YSK006-089AH YSK006-010AH YPN006-021H or G YPN006-158H YPN006-020H or G
	Tools	
	Crimp Tool Positioner Removal Tool Insertion Tool	AFM8 or M22520/2-01 K547 S/DEM1.0060 T1866

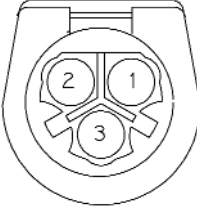
D01 4 Pin  <p>Receptacle seen from mating side</p>	Housing	Part Numbers*
	Receptacle Panel Mount Receptacle Cable Plug	D01EEB406NT D01EPB406NT D01PB406NT
	Contacts	Part Numbers*
	Crimp Socket – 22-26 AWG Crimp Socket – 18-20 AWG Solder Cup Socket – up to 22 AWG Crimp Pin – 22-26 AWG Crimp Pin –18-20 AWG Solder Cup Pin – up to 22 AWG	YSK006-011AH YSK006-089AH YSK006-010AH YPN006-021H or G YPN006-158H YPN006-020H or G
	Tools	
	Crimp Tool Positioner Removal Tool Insertion Tool	AFM8 or M22520/2-01 K547 S/DEM1.0060 T1866


D01 9 Pin  <p>Receptacle seen from mating side</p>	Housing	Part Numbers*
	Receptacle Panel Mount Receptacle Cable Plug	D01EEB904NUT D01EPB904NUT D01PB904NUT
	Contacts	Part Numbers*
	Crimp Socket – 26-28 AWG Solder Cup Socket – up to 26 AWG Crimp Pin – 26-28 AWG Solder Cup Pin – up to 26 AWG	YSK004-002AH YSK004-003AH YPN004-001H or G YPN004-002H or G
	Tools	
	Crimp Tool Positioner Insertion Tool	AFM8 or M22520/2-01 T1914 T1916


*Plating Reference:

Male Pins: G = 10 µin gold (min) over Ni
H = 50 µin gold (min) over Ni
Female Sockets: AH = 50 µin gold (min) over Ni on mating surface,
gold flash over Ni on termination

See page 2/13 for complete ordering information.

D02 3 Pin  <p>Receptacle seen from mating side</p>	Housing	Part Numbers*
	Receptacle Panel Mount Receptacle Cable Plug	D02EEB315NT D02EPB315NT D02PB315NT
	Contacts	Part Numbers*
	Crimp Socket – 18 & 20 AWG Solder Cup Socket – up to 16 AWG Crimp Pin –18 & 20 AWG Solder Cup Pin – up to 16 AWG	YSK015-011AH YSK015-012AH YPN015-005H or G YPN015-006H or G
	Tools	
	Crimp Tool Positioner Removal Tool Insertion Tool	AF8 TP688 S/DEM5.0150 T1888

D02 7 Pin  <p>Receptacle seen from mating side</p>	Housing	Part Numbers*
	Receptacle Panel Mount Receptacle Cable Plug	D01EEB706NT D01EPB706NT D01PB706NT
	Contacts	Part Numbers*
	Crimp Socket – 22-26 AWG Solder Cup Socket – up to 22 AWG Crimp Pin – 22-26 AWG Solder Cup Pin – up to 22 AWG	YSK006-015AH YSK006-016AH YPN006-025H or G YPN006-026H or G
	Tools	
	Crimp Tool Positioner Removal Tool Insertion Tool	AFM8 or M22520/2-01 K623 S/DEM1.0060 T1866


D02 9 Pin  <p>Receptacle seen from mating side</p>	Housing	Part Numbers*
	Receptacle Panel Mount Receptacle Cable Plug	D02EEB906NT D02EPB906NT D02PB906NT
	Contacts	Part Numbers*
	Crimp Socket – 22-26 AWG Solder Cup Socket – up to 22 AWG Crimp Pin – 22-26 AWG Solder Cup Pin – up to 22 AWG	YSK006-015AH YSK006-016AH YPN006-025H or G YPN006-026H or G
	Tools	
	Crimp Tool Positioner Removal Tool Insertion Tool	AFM8 or M22520/2-01 K623 S/DEM1.0060 T1866


*Plating Reference:

Male Pins: G = 10 µin gold (min) over Ni
H = 50 µin gold (min) over Ni

Female Sockets: AH = 50 µin gold (min) over Ni on mating surface,
gold flash over Ni on termination

See page 2/13 for complete ordering information.

D02 12 Pin  <p>Receptacle seen from mating side</p>	Housing	Part Numbers
	Receptacle Panel Mount Receptacle Cable Plug	D02EEB125NT D02EPB125NT D02PB125NT
	Contacts	Part Numbers*
	Crimp Socket – 22-26 AWG Solder Cup Socket – up to 22 AWG Crimp Pin – 22-26 AWG Solder Cup Pin – up to 22 AWG	YSK005-036AH YSK005-037AH YPN005-049H or G YPN005-050H or G
	Tools	
	Crimp Tool Positioner Insertion Tool	AFM8 or M22520/2-01* T870 T1271

D02 25 Pin  <p>Receptacle seen from mating side</p>	Housing	Part Numbers*
	Receptacle Panel Mount Receptacle Cable Plug	D02EEB2504NUT D02EPB2504NUT D02PB2504NUT
	Contacts	Part Numbers*
	Crimp Socket – 26-28 AWG Solder Cup Socket – up to 26 AWG Crimp Pin – 26-28 AWG Solder Cup Pin – up to 26 AWG	YSK004-002AH YSK004-003AH YPN004-001H or G YPN004-002H or G
	Tools	
	Crimp Tool Positioner Insertion Tool	AFM8 or M22520/2-01 T1914 T1916

*Plating Reference:


Male Pins: G = 10 µin gold (min) over Ni
H = 50 µin gold (min) over Ni

Female Sockets: AH = 50 µin gold (min) over Ni on mating surface,
gold flash over Ni on termination

See page 2/13 for complete ordering information.

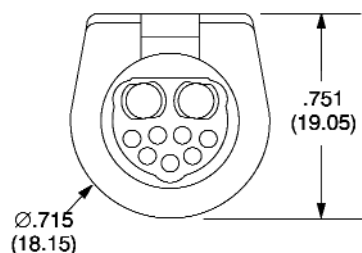
COMBINATION CONNECTORS POWER & SIGNAL

- Two 8-Amp and up to seven 2.5-Amp Signal Positions • Crimp Contacts

D02 Power & Signal  Receptacle seen from mating side	Housing		Part Numbers*
	Receptacle Panel Mount Plug		D02EEB-0043 D02PB-0044
	Contacts		Part Numbers**
	Power Socket – 16-20 AWG Power Pin – 16-20 AWG Signal Socket – 22-26 AWG Signal Pin – 22-26 AWG		YSK015-053AH YPN015-038H or G YSK005-036AH YPN005-049H or G
	Tools		
	Crimp Tool Positioner (Pin) Positioner (Socket) Removal Tool Insertion Tool	Power AF8 T1164 TP688 T1124 —	Signal AFM8 T870 T870 — T1215

GENERAL SPECIFICATIONS

Contacts	Power	Signal
Number	2	Up to 7
Diameter	.059 (1.5)	.018 (0.5)
Current Rating (amps)	8	2.5
Contact Resistance	<2.0 milliohms	<8.0 milliohms
Extraction Force	1.8 to 5.4 oz.	.0.3 to 1.6 oz.
Contact Material		
Pins	Brass	
Sockets	BeCu Wires and Brass body	
Insulator Material		
Receptacle	Polycarbonate	
Plug	Polycarbonate	
Flamability	UL94V0	
Temperature Rating	-40°C to +85°C	
Insulation Resistance	>10 Mohm @ 500 Vdc	



ACCESSORIES

	Power	Signal
Crimp Tool	AF8	AFM8
Positioner (Pin)	T1165	T870
Positioner (Socket)	TP688	T870
Removal Tool	T1124	—
Insertion Tool	—	T1215

**Plating Reference:


Male Pins: G = 10 µin gold (min) over Ni
H = 50 µin gold (min) over Ni

Female Sockets: AH = 50 µin gold (min) over Ni on mating surface, gold flash over Ni on termination

*B = Black Polycarbonate Available in Power & Signal

See page 2/13 for complete ordering information.

COMBINATION CONNECTORS COAX OR POWER & SIGNAL

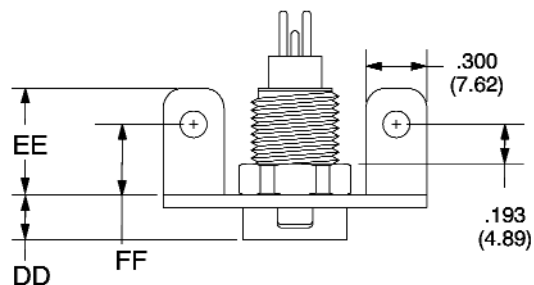
<div><div>D02</div><div>Coax or Power & Signal</div><div></div><div>Receptacle seen from mating side</div></div>	Housing		Part Numbers*	
	Receptacle Panel Mount Receptacle Cable Plug		D02EEH905 D02EPH905 D02PH905	
	Contacts		Part Numbers**	
	Coax Crimp Socket – RRG 316, RG316DB Coax Solder Cup Socket – RG405, T-Flex 405 Coax Crimp Pin – RG316, RG316DB Coax Solder Cup Pin – RG405, T-Flex 405 Power Crimp Socket – 12 AWG Power Crimp Pin – 12 AWG Signal Crimp Socket – 22-26 AWG Signal Solder Cup Socket – 22-26 AWG Signal Crimp Pin – 22-26 AWG Signal Solder Cup Pin – 22-26 AWG		YCX0315-002AH YCX0315-001AH YCX0315-004H YCX0315-003H YCX0315-018AH YCX0315-019AH YSK025-031AH YPN025-024H YSK005-036AH YSK005-037AH YPN005-049H or G YPN005-050H or G	
	Tools			
Crimp Tool	Coax HX3 (Outer) AFM8 (Inner)	Power M309	Signal AFM8	
Crimp Die Set	T1958 (Outer) or T2019 (Outer for RG316DB)	_____	_____	
Positioner	T1957 (Inner)	T1981	T870	
Removal Tool	T1982	T1982		
Insertion Tool	_____	_____	T1215	

*H = Black Polyetherimide (High Temperature)
Available in Coax or Power & Signal

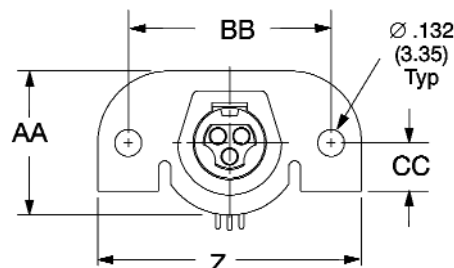
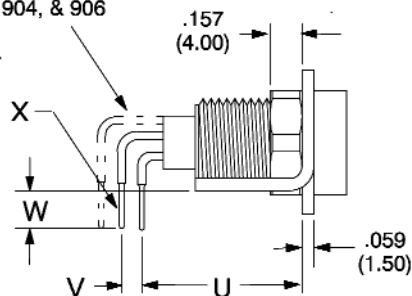
**Plating Reference:

Male Pins: G = 10 µin gold (min) over Ni
H = 50 µin gold (min) over Ni
Female Sockets: AH = 50 µin gold (min) over Ni on mating surface,
gold flash over Ni on termination

PRINTED CIRCUIT BOARD RECEPTACLES (Right Angle)



2 Rows: 306, 315, & 406
3 Rows: 706, 904, & 906
4 Rows: 125
6 Rows: 2504



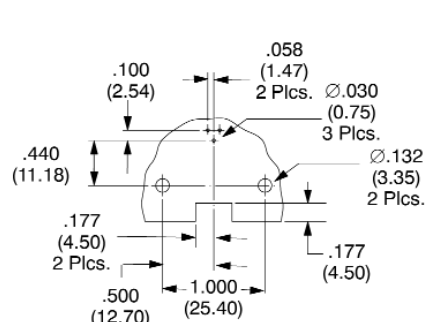
NOTE:

1) Dimensions in inches (mm)

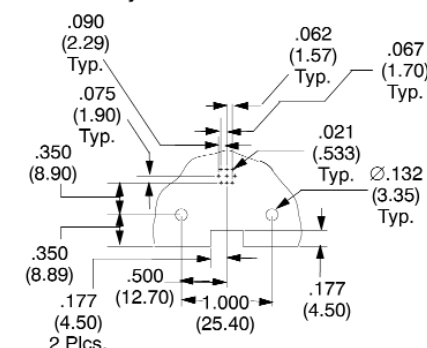
Dimension	D01 Housing 3 & 4 Position	D01 Housing 9 Position	D02 Housing 3 Position	D02 Housing 7 & 9 Position	D02 Housing 12 Position	D02 Housing 25 Position
U	.790 (20.07)	.700 (17.79)	.834 (21.19)	.742 (18.85)	.689 (17.50)	.655 (16.65)
V	.100 (2.54)	.075 (1.90)	.150 (3.81)	.100 (2.54)	.100 (2.54)	.075 (1.90)
W	.187 (4.74)	.181 (4.60)	.184 (4.68)	.177 (4.50)	.173 (4.39)	.181 (4.60)
X dia.	.024 (.60)	.015 (0.38)	.059 (1.50)	.024 (.60)	.017 (.435)	.015 (0.38)
Z	1.300 (33.02)	1.300 (33.02)	1.500 (38.10)	1.500 (38.10)	1.500 (38.10)	1.500 (38.10)
AA	.709 (18.00)	.709 (18.00)	.866 (22.00)	.866 (22.00)	.866 (22.00)	.866 (22.00)
BB	1.000 (25.40)	1.000 (25.40)	1.200 (30.48)	1.200 (30.48)	1.200 (30.48)	1.200 (30.48)
CC	.236 (6.00)	.236 (6.00)	.315 (8.00)	.315 (8.00)	.315 (8.00)	.315 (8.00)
DD	.220 (5.60)	.220 (5.60)	.335 (8.50)	.335 (8.50)	.335 (8.50)	.335 (8.50)
EE	.528 (13.40)	.528 (13.40)	.610 (15.50)	.610 (15.50)	.610 (15.50)	.610 (15.50)
FF	.350 (8.89)	.350 (8.89)	.400 (10.16)	.400 (10.16)	.400 (10.16)	.400 (10.16)

See page 2/13 for complete ordering information.

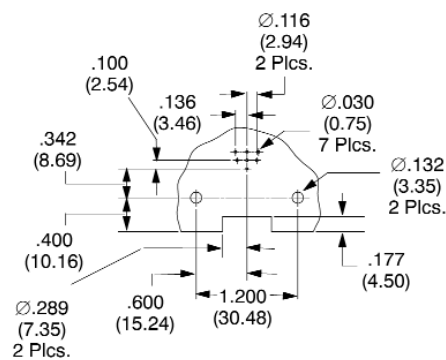
MOUNTING DIMENSIONS **RIGHT ANGLE DAUGHTER BOARD APPLICATION** PC Board Shown From Component Side



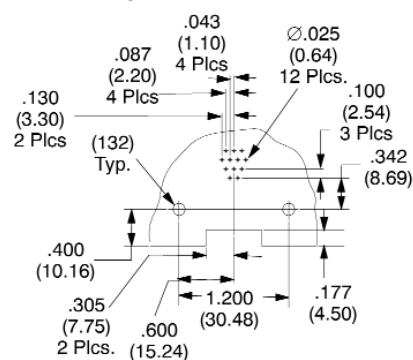
PC Board Layout for D01EEB306FB24TABH



PC Board Layout for D01EEB904FB24UTABH

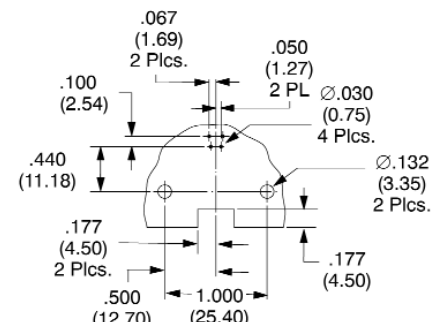


PC Board Layout for D02EEB706FB24TABH

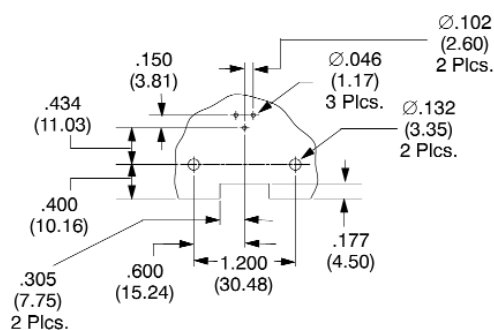


PC Board Layout for D02EEB125FB24TABH

D01 3 Pin
D01 4 Pin



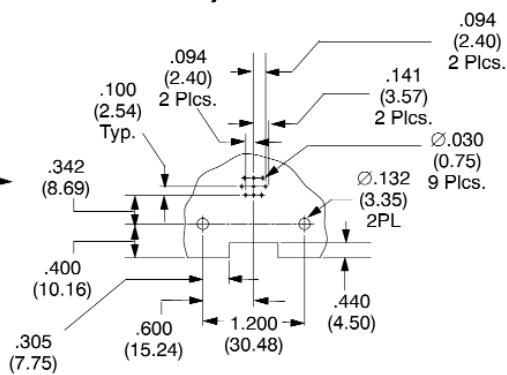
PC Board Layout for D01EEB406FB24TABH



PC Board Layout for D02EEB315FB24TABH

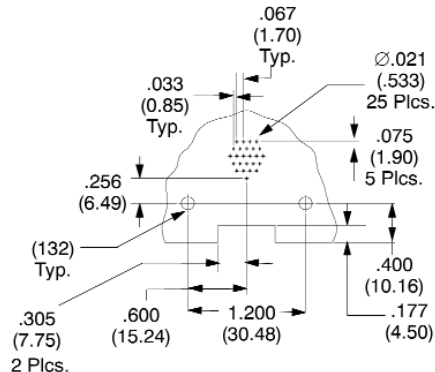
D01 9 Pin
D02 3 Pin

D02 7 Pin
D02 9 Pin



PC Board Layout for D02EEB906FB24TABH

D02 12 Pin
D02 25 Pin

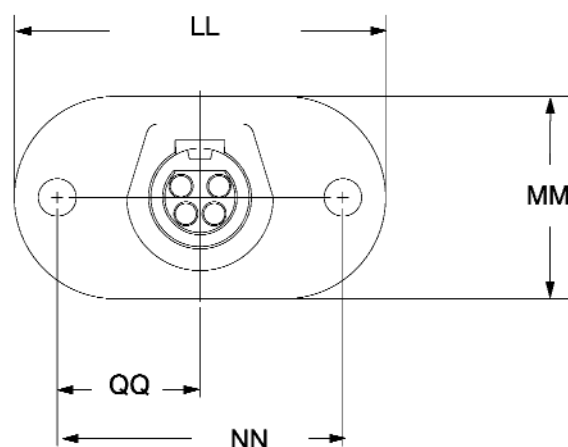
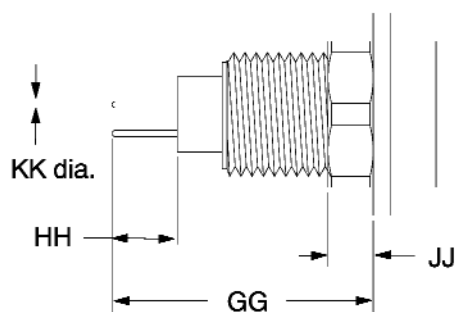
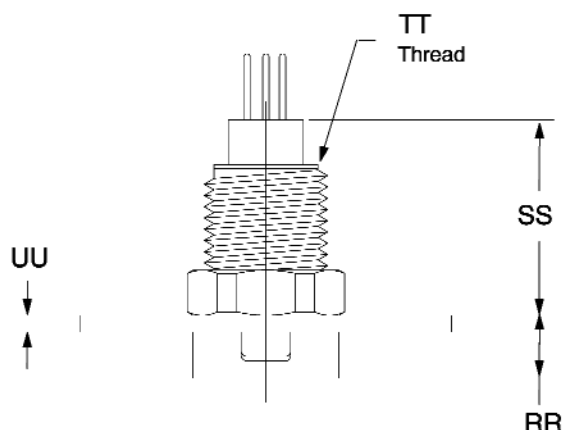


PC Board Layout for D02EEB2504FB24UTABH

NOTE:

1) Dimensions in inches (mm)

PRINTED CIRCUIT BOARD RECEPTACLES (Straight Dip Solder)



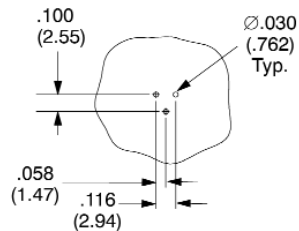
NOTE:

1) Dimensions in inches (mm)

Dimension	D01 Housing 3 & 4 Position	D01 Housing 9 Position	D02 Housing 3 Position	D02 Housing 7 & 9 Position	D02 Housing 12 Position	D02 Housing 25 Position
GG	.914 (23.23)	.866 (22.00)	1.059 (26.91)	.989 (25.12)	.923 (23.45)	.870 (22.10)
HH	.229 (5.82)	.181 (4.60)	.193 (4.91)	.221 (5.61)	.233 (5.94)	.260 (4.60)
JJ	.157 (4.00)	.157 (4.00)	.157 (4.00)	.157 (4.00)	.157 (4.00)	.157 (4.00)
KK	.023 (0.58)	.015 (0.38)	.039 (1.00)	.023 (0.58)	.017 (0.43)	.015 (0.38)
LL	1.300 (33.02)	1.300 (33.02)	1.500 (38.10)	1.500 (38.10)	1.500 (38.10)	1.500 (38.10)
MM	.709 (18.00)	.709 (18.00)	.866 (22.00)	.866 (22.00)	.866 (22.00)	.866 (22.00)
NN	1.000 (25.40)	1.000 (25.40)	1.200 (30.48)	1.200 (30.48)	1.200 (30.48)	1.200 (30.48)
QQ	.500 (12.70)	.500 (12.70)	.600 (15.24)	.600 (15.24)	.600 (15.24)	.600 (15.24)
RR	.220 (5.60)	.220 (5.60)	.335 (8.50)	.335 (8.50)	.335 (8.50)	.335 (8.50)
SS	.685 (17.40)	.685 (17.40)	.866 (22.00)	.768 (19.50)	.689 (17.50)	.689 (17.50)
TT	M11 x 1.00 Thd	M11 x 1.00 Thd	M15 x 1.00 Thd	M15 x 1.00 Thd	M15 x 1.00 Thd	M15 x 1.00 Thd
UU	.059 (1.50)	.059 (1.50)	.059 (1.50)	.059 (1.50)	.059 (1.50)	.059 (1.50)

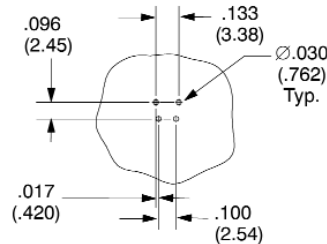
See page 33 for complete ordering information.

MOUNTING DIMENSIONS **STRAIGHT CONTACT PC BOARD APPLICATION** PC Board Shown From Component Side

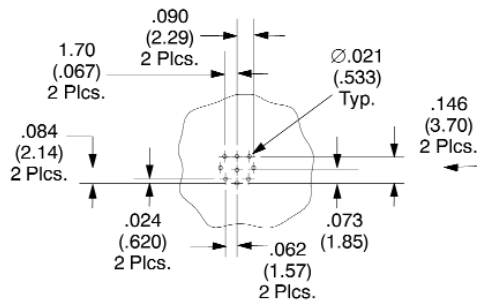


PC Board Layout for D01EEB306FD21TABH

← D01 3 Pin
D01 4 Pin →

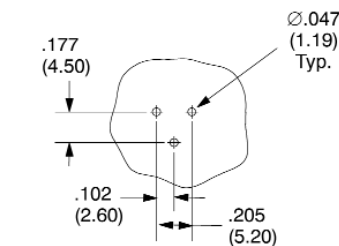


PC Board Layout for D01EEB406FD21TABH

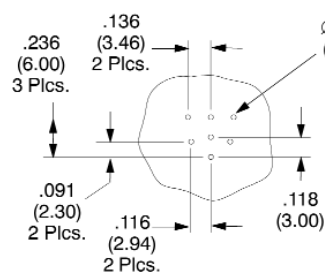


PC Board Layout for D01EEB904FD21UTABH

← D01 9 Pin
D02 3 Pin →

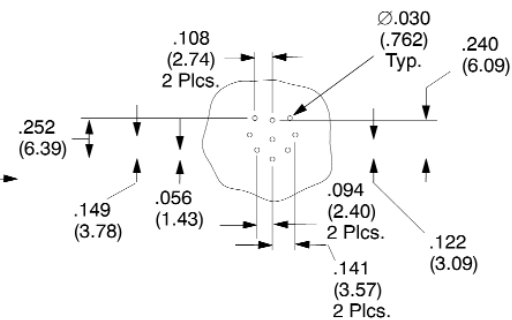


PC Board Layout for D02EEB315FD21TABH

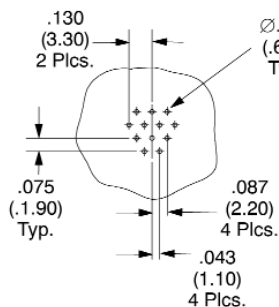


PC Board Layout for D02EEB706FD21TABH

← D02 7 Pin
D02 9 Pin →

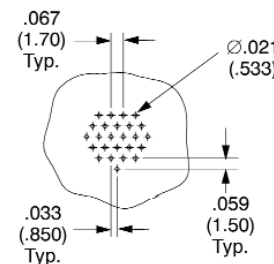


PC Board Layout for D02EEB906FD21TABH



PC Board Layout for D02EEB125FD21TABH

← D02 12 Pin
D02 25 Pin →

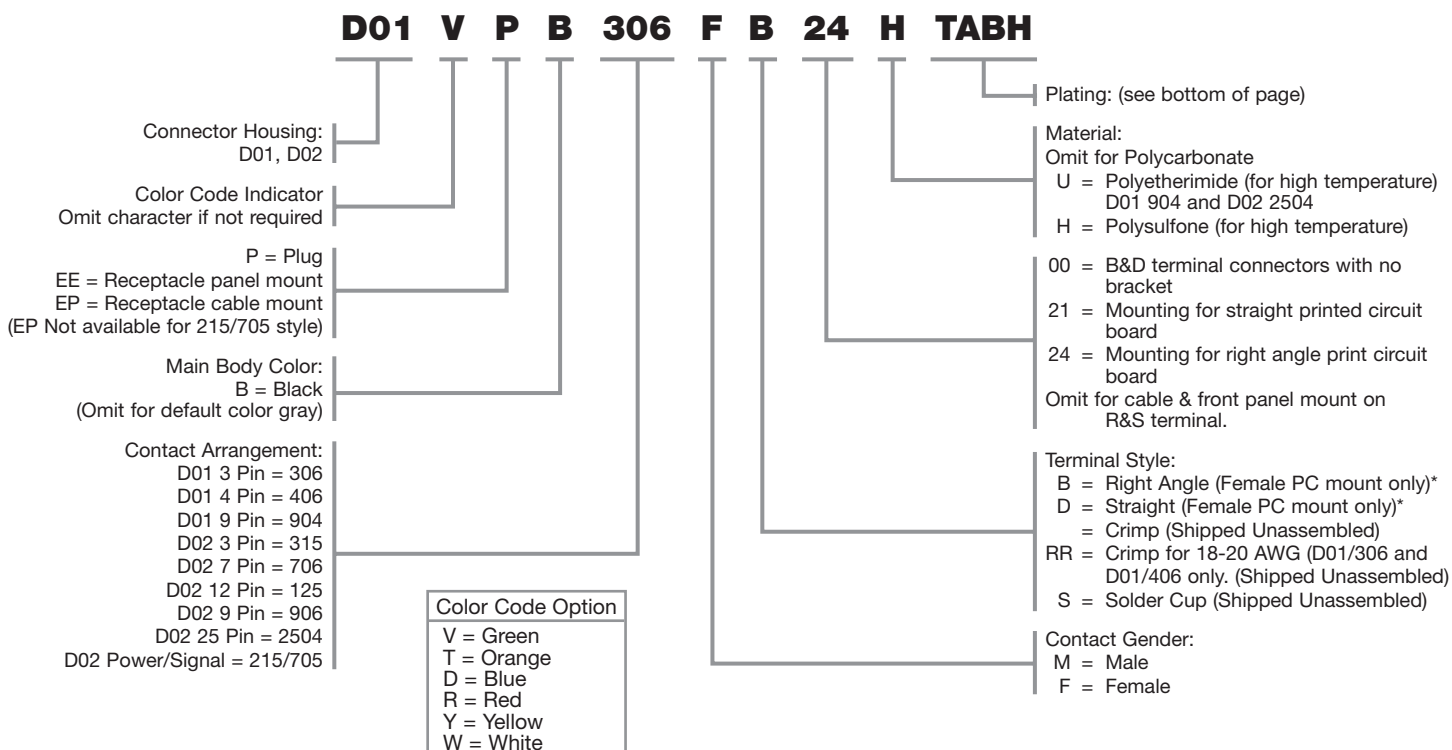


PC Board Layout for D02EEB2504FD21UTABH

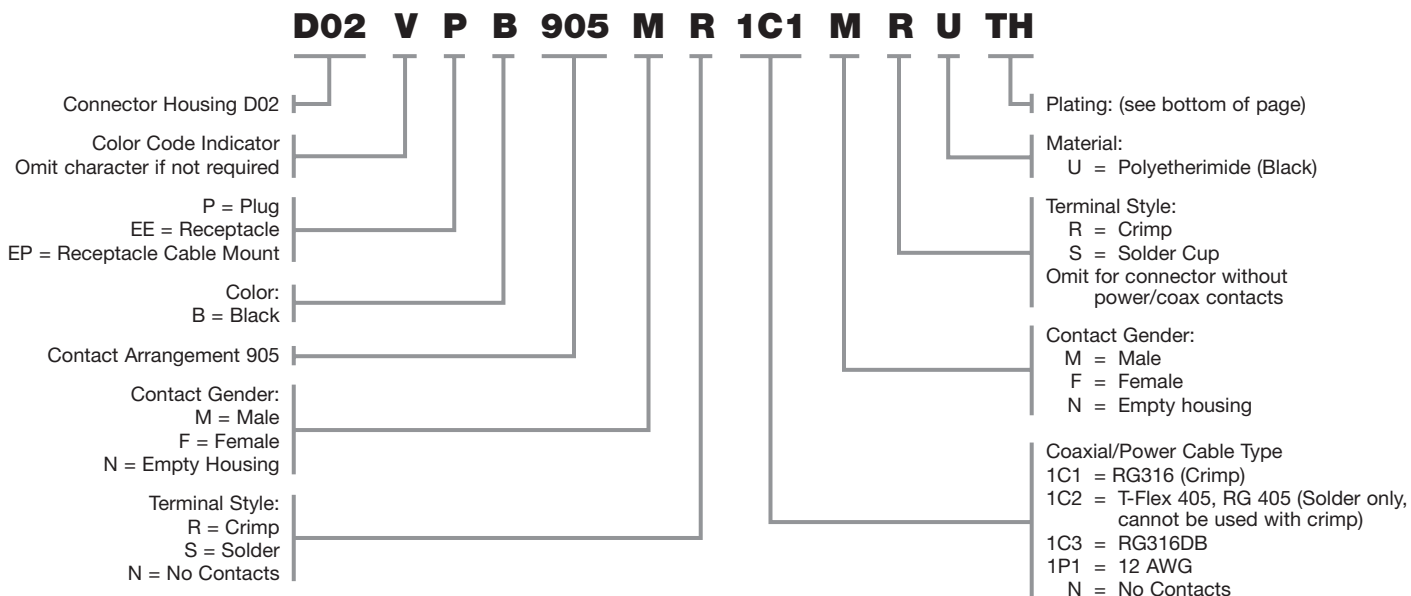
NOTE:

1) Dimensions in inches (mm)

ORDERING INFORMATION



D02 COAX OR POWER & SIGNAL ORDERING INFORMATION



*Plating Reference:

Male Pins: T = 10 µin gold (min) over Ni
TH = 50 µin gold (min) over Ni

Female Sockets: TAH = 50 µin gold (min) over Ni on mating surface, gold flash over Ni on termination

TABH = 50 µin gold (min) over Ni on mating surface, tin lead over Ni on termination (D+B only)

*Check factory for availability.