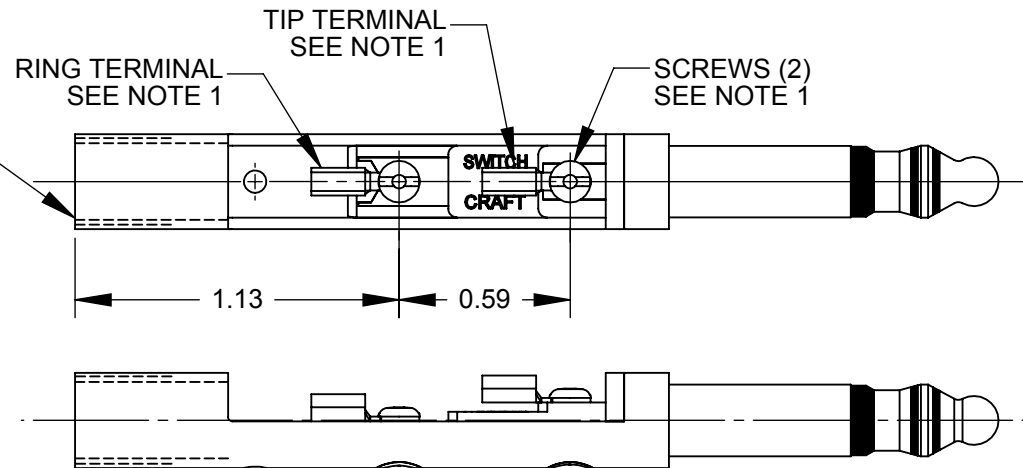
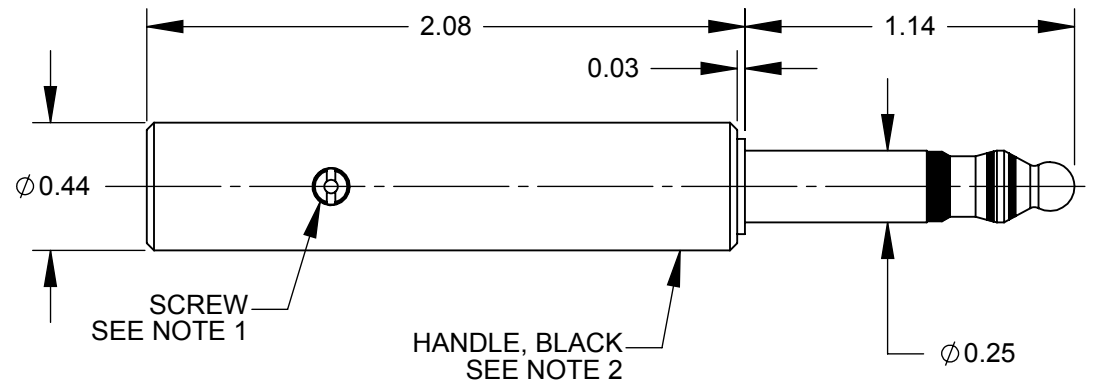
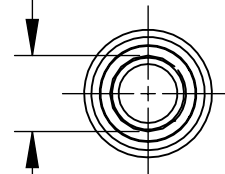


5/16-24 UNF-2B
TRUNCATED INTERNAL THREAD
0.301 MAJOR DIAMETER



Ø 0.264
I.D. REF



NOTES:

1. TERMINALS AND SCREWS ARE SHIPPED UNASSEMBLED AS HARDWARE KIT K172.
2. HANDLE SHIPPED UNASSEMBLED.
3. MATERIALS:
TIP ROD, RING & SLEEVE - COPPER ALLOY
INSULATION - THERMOPLASTIC, BLACK
TERMINALS - COPPER ALLOY, TIN PLATED
SCREWS- COPPER ALLOY
HANDLE - THERMOPLASTIC, BLACK
4. THIS PRODUCT IS RoHS COMPLIANT.

CUSTOMER DRAWING

					<div>UNLESS OTHERWISE SPECIFIED</div> <div>1. ALL DIMENSIONS IN INCHES</div> <div>- TWO PLACE DECIMALS ±0.02</div> <div>- THREE PLACE DECIMALS ±0.005</div>	THIS DRAWING DESCRIBES A DESIGN CONSIDERED PROPRIETARY IN NATURE, DEVELOPED AND MANUFACTURED BY SWITCHCRAFT INC. AND IS RELEASED ON A CONFIDENTIAL BASIS FOR IDENTIFICATION PURPOSES ONLY.					
						SIZE	WIDTH	MULT	LBS/M	TEMPER	
						FINISH			MATERIAL		
						SPEC No.			SPEC No.		
						FIRST USED ON		SCALE		<div>Switchcraft®</div>	
								1.5:1			
0A	PRELIMINARY	04-29-13	JEB	TJK	<div>DO NOT SCALE DRAWING</div>	DATE DRAWN	BY	CHKD	APVD	SHEET 1 OF 1	
						04-29-13	JEB	JEB	TJK		
								04-29-13	04-29-13		
REV	ECO NUMBER	DATE	BY	APVD		NAME	LITTEL PLUG, RoHS			PART No.	REV
REVISIONS									483Z	0A	