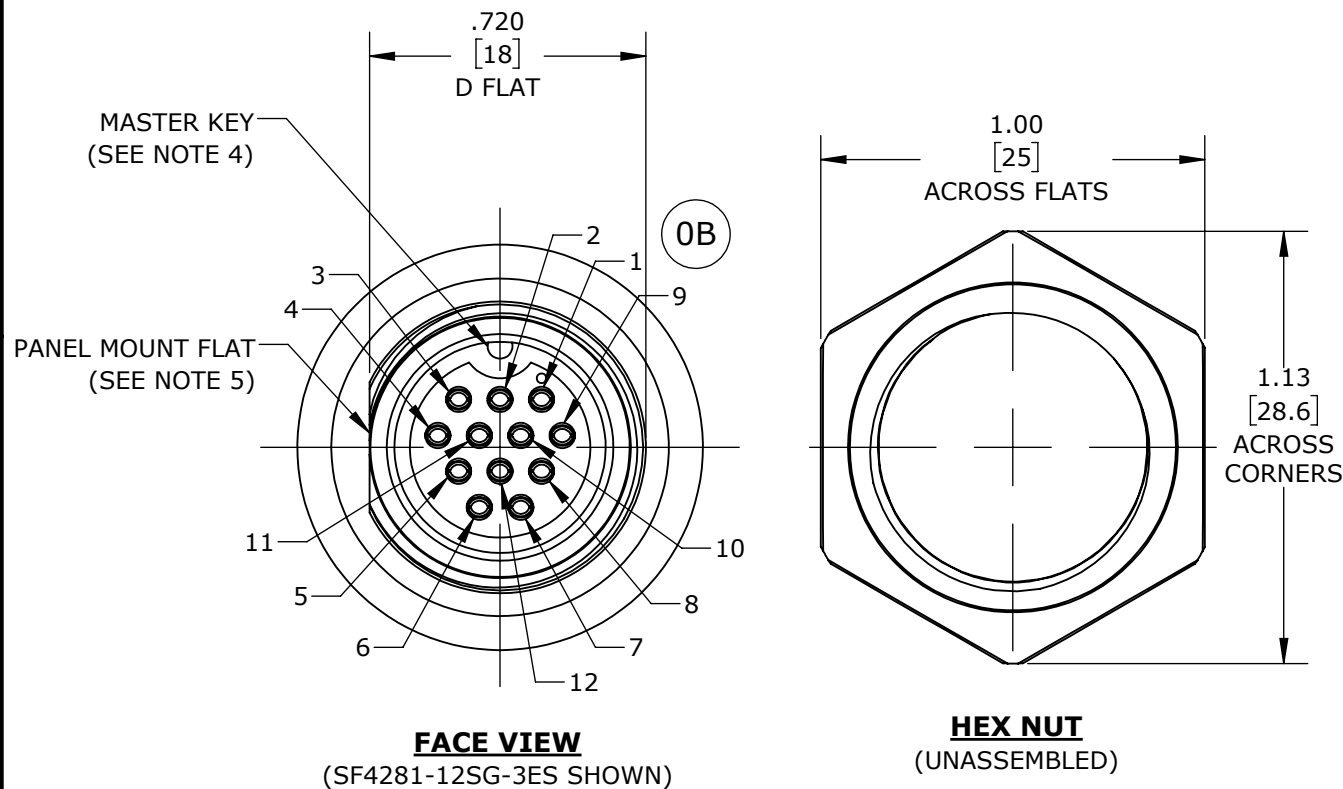


| | | | | | |
|--------------|--------------|-------|----|--------------|-------|
| MFG. ENG. | APPROVED BY: | DATE: | QA | APPROVED BY: | DATE: |
| | | | | | |

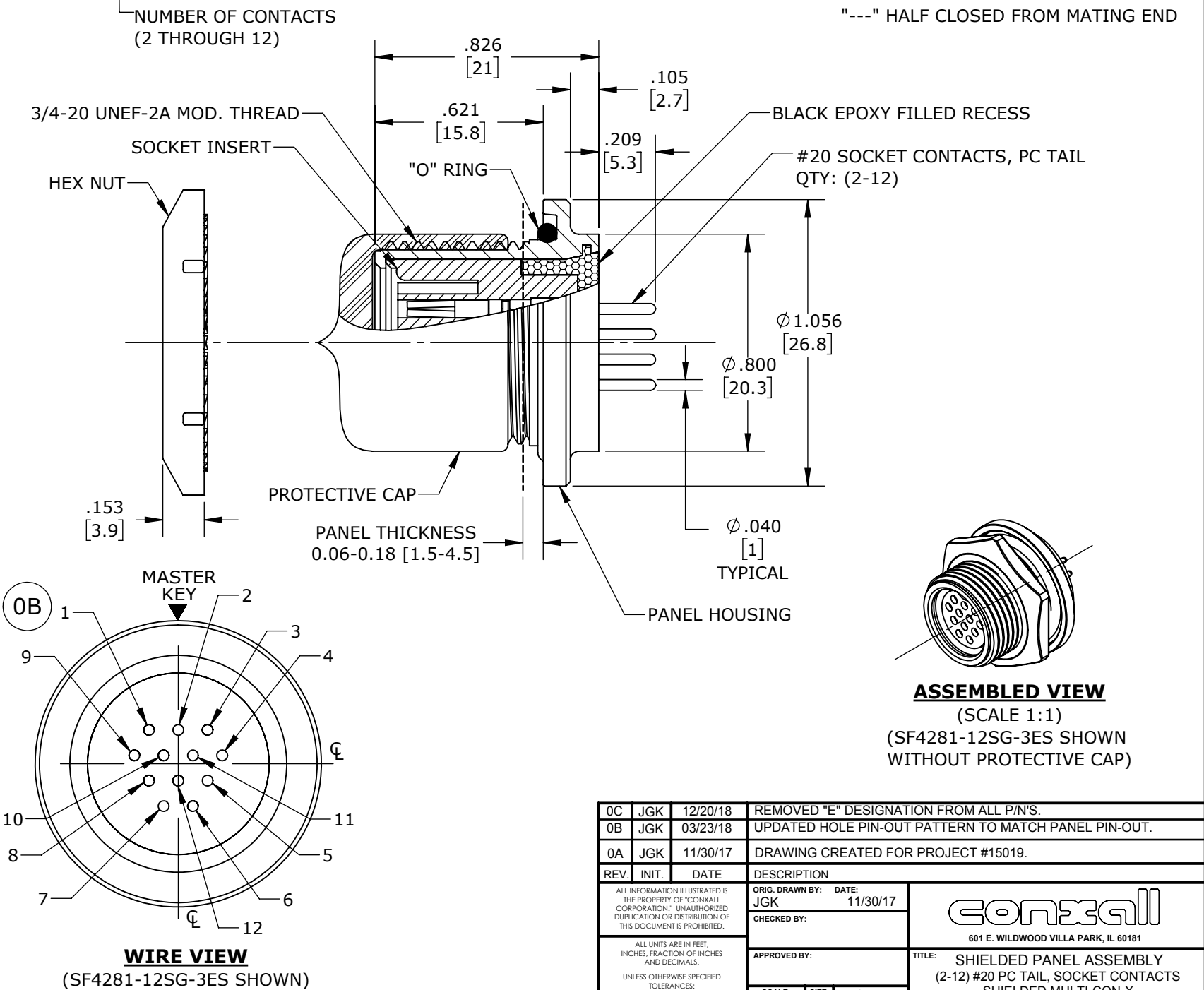
NOTES:

1. FINISHED CONNECTOR ASSEMBLIES ARE PACKED INTO A PARTITION BOX, 25 PIECES PER BOX. BOX IS LABELED WITH CONXALL PART NUMBER AND DATE CODE.
2. HEX NUT IS BULK PACKED IN POLY BAG. O-RING AND PROTECTIVE CAP ARE ASSEMBLED ONTO THE CONNECTOR.
3. TERMINATING END OF CONNECTOR IS FILLED WITH BLACK EPOXY.
4. MASTER KEY IS AT 12 O'CLOCK.
5. PANEL MOUNT FLAT IS AT 9 O'CLOCK.
6. MATERIALS:
HEX NUT & PANEL HOUSING- COPPER ALLOY, NICKEL PLATED PER MIL-C-26074
PROTECTIVE CAP- ELASTOMER, BLACK
SOCKET INSERT- THERMOPLASTIC, BLACK
O-RING- ELASTOMER, BLACK
CONTACTS- COPPER ALLOY, GOLD PLATED PER MIL-G-45204 OVER NICKEL PER QQ-N-290



| HOLE PATTERN CHART | | |
|-----------------------------|--------|--------|
| POS. | "X" | "Y" |
| 1 | 0.108 | 0.125 |
| 2 | 0.000 | 0.125 |
| 3 | -0.108 | 0.125 |
| 4 | -0.162 | 0.031 |
| 5 | -0.108 | -0.062 |
| 6 | -0.054 | -0.156 |
| 7 | 0.054 | -0.156 |
| 8 | 0.108 | -0.062 |
| 9 | 0.162 | 0.031 |
| 10 | 0.054 | 0.031 |
| 11 | -0.054 | 0.031 |
| 12 | 0.000 | -0.062 |
| ALL DIMS. SHOWN TOL. ±0.001 | | |

| POSITIONS | | | | | | | | | | | | |
|-----------------|-------|-------|-------|-------|-------|-------|-------|-------|-------|--------|--------|--------|
| PART NUMBER | POS 1 | POS 2 | POS 3 | POS 4 | POS 5 | POS 6 | POS 7 | POS 8 | POS 9 | POS 10 | POS 11 | POS 12 |
| SF4281-2SG-3ES | --- | --- | --- | OPEN | --- | --- | --- | --- | OPEN | --- | --- | --- |
| SF4281-3SG-3ES | OPEN | --- | OPEN | --- | --- | --- | --- | --- | --- | --- | --- | OPEN |
| SF4281-4SG-3ES | OPEN | --- | OPEN | --- | OPEN | --- | --- | OPEN | --- | --- | --- | --- |
| SF4281-5SG-3ES | --- | OPEN | --- | OPEN | --- | OPEN | OPEN | --- | OPEN | --- | --- | --- |
| SF4281-6SG-3ES | OPEN | OPEN | --- | OPEN | OPEN | --- | OPEN | OPEN | --- | --- | --- | --- |
| SF4281-7SG-3ES | OPEN | OPEN | OPEN | OPEN | --- | OPEN | OPEN | --- | OPEN | --- | --- | --- |
| SF4281-8SG-3ES | OPEN | --- | OPEN | OPEN | OPEN | OPEN | OPEN | OPEN | OPEN | --- | --- | --- |
| SF4281-9SG-3ES | OPEN | OPEN | OPEN | OPEN | OPEN | OPEN | OPEN | OPEN | OPEN | --- | --- | --- |
| SF4281-10SG-3ES | OPEN | OPEN | OPEN | OPEN | OPEN | OPEN | OPEN | OPEN | OPEN | OPEN | --- | --- |
| SF4281-11SG-3ES | OPEN | OPEN | OPEN | OPEN | OPEN | OPEN | OPEN | OPEN | OPEN | OPEN | OPEN | --- |
| SF4281-12SG-3ES | OPEN | OPEN | OPEN | OPEN | OPEN | OPEN | OPEN | OPEN | OPEN | OPEN | OPEN | OPEN |
| SF4281-XXSG-3ES | | | | | | | | | | | | |



| | | | | |
|--|-------|----------|--|----------|
| 0C | JGK | 12/20/18 | REMOVED "E" DESIGNATION FROM ALL P/N'S. | |
| 0B | JGK | 03/23/18 | UPDATED HOLE PIN-OUT PATTERN TO MATCH PANEL PIN-OUT. | |
| 0A | JGK | 11/30/17 | DRAWING CREATED FOR PROJECT #15019. | |
| REV. | INIT. | DATE | DESCRIPTION | |
| ALL INFORMATION ILLUSTRATED IS THE PROPERTY OF "CONXALL CORPORATION." UNAUTHORIZED DUPLICATION OR DISTRIBUTION OF THIS DOCUMENT IS PROHIBITED. | | | ORIG. DRAWN BY: | DATE: |
| | | | JGK | 11/30/17 |
| ALL UNITS ARE IN FEET, INCHES, FRACTION OF INCHES AND DECIMALS. UNLESS OTHERWISE SPECIFIED TOLERANCES: 3 PLACE DECIMALS ±.005 ANGLES ±1° FRACTIONS ±1/16 ± CRITICAL CHARACTERISTIC FLAG PER SPEC. XXXX | | | CHECKED BY: | |
| | | | APPROVED BY: | |
| RoHS COMPLIANT | | | SCALE | SIZE |
| | | | 2:1 | B |
| FILE: SAME AS P/N | | | SHEET | 1 OF 1 |
| | | | DIRECTORY: | SLW |
| PART NUMBER: SF4281-XXSG-3ES | | | TITLE: SHIELDED PANEL ASSEMBLY (2-12) #20 PC TAIL, SOCKET CONTACTS SHIELDED MULTI-CON-X STANDARD PRODUCT | |
| | | | CUSTOMER: REV 0C | |