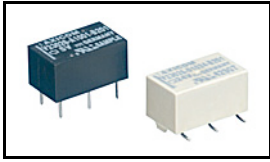


## V23026A1001B201 Product Details

[Share](#) [Print](#) [Email](#)


**V23026A1001B201**

TE Internal Number: 1393774-1

 **Active**

 [View 3D PDF](#)

### Communications/Signal PC Board Relays

 **Converted to EU RoHS/ELV Compliant**  
(Statement of Compliance)

#### Product Highlights:

- P1/V23026 Series
- Contact - Current Class = 0A to 2A Class
- Contact - Rated Current = 1 A
- Terminal Type = PCB-THT
- Contact - Arrangement = 1 Form C (CO)

[View all Features](#)

### Quick Links

- ▶ [Pricing & Availability](#)
- ▶ [Search for Tooling](#)
- ▶ [Product Feature Selector](#)
- ▶ [Contact Us About This Product](#)

[Add to My Part List](#)

[Request Sample](#)

[Find Similar Products](#)

[Buy Product](#)

### Documentation & Additional Information

#### Product Drawings:

- None Available

#### Catalog Pages/Data Sheets:

- None Available

#### Product Specifications:

- [P1 Relay Datasheet](#) (PDF, English)

#### Application Specifications:

- None Available

#### Instruction Sheets:

- None Available

#### CAD Files: (CAD Format & Compression Information)

- [2D Drawing](#) (DXF, Version S00E)
- [3D Model](#) (IGES, Version S00E)
- [3D Model](#) (STEP, Version S00E)

[List all Documents](#)

#### Additional Information:

- [Product Line Information](#)

#### Additional Product Images:

- [Product Photo](#)
- [Schematic](#)
- [PCB Layout](#)
- [Wiring Diagram](#)

#### Related Products:

- [Tooling](#)

### Product Features (Please use the Product Drawing for all design activity)

#### Electrical Characteristics:

- Contact - Current Class = 0A to 2A Class
- Contact - Rated Current (A) = 1
- Contact - Limiting Continuous Current (A) = 1
- Contact - Limiting Making Current (A) = 1
- Contact - Limiting Breaking Current (A) = 1
- Insulation - Initial Dielectric Between Coil/Contact Class = 1000V to 1500VA Class
- Insulation - Initial Dielectric Between Open Contacts (V rms) = 500
- Insulation - Initial Dielectric Between Contacts and Coil (V rms) = 1500
- Contact - Rated Voltage (VAC) = 150
- Contact - Rated Voltage (VDC) = 125
- Contact - Switching Voltage Max. (VAC) = 150
- Contact - Switching Voltage Max. (VDC) = 125
- Contact - Limiting Short-Time Current (A) = 1
- Coil - Rated Voltage (VDC) = 5

#### Body Features:

- Weight (g [oz]) = 2.00 [0.0705]
- Mount Type = PCB

#### Contact Features:

- Terminal Type = PCB-THT
- Contact Material = PdNi, AgRh covered
- Contact - Number of Poles = 1
- Contact - Special Features = Bifurcated/Twin Contacts

#### Configuration Features:

- [Contact - Arrangement](#) = 1 Form C (CO)
- [Coil - Magnetic System](#) = Monostable, DC, polarized

#### Industry Standards:

- [RoHS/ELV Compliance](#) = RoHS compliant, ELV compliant
- [Lead Free Solder Processes](#) = Wave solder capable

- [Coil - Resistance \( \$\Omega\$ \)](#) = 370
- Coil - Rated Power, DC (mW) = 68
- Coil - Rated Power Class = 0 to 100mW Class
- Contact - Switching Recommended Load, Min. = 10mA at 0.02V
- Insulation - Special Features = 2500V Initial Surge Withstand Voltage between Contacts and Coil
- HF Parameters - Isolation (dB) = -18.0dB@900MHz, -30.0dB@100MHz
- HF - Parameters - Voltage Standing Wave Ration (VSWR) = 1.06@100MHz, 1.75@900MHz
- HF Parameters - Insertion Loss (dB) = -1.9dB@900MHz, -0.12dB@100MHz

#### Dimensions:

- Mechanical - Length Class = 12mm to 14mm Class
- Length (mm [in]) = 13.00 [0.512]
- Mechanical - Width Class = 6mm to 8mm Class
- Width (mm [in]) = 7.59 [0.2988]
- Mechanical - Height Class = 6mm to 7mm Class
- Height (mm [in]) = 6.90 [0.272]
- Insulation - Clearance Between Contact and Coil (mm [in]) = 0.75 [0.0295]
- Insulation - Creepage Between Contact and Coil (mm [in]) = 0.75 [0.0295]

to 260°C, Wave solder capable to 240°C, Wave solder capable to 265°C

- RoHS/ELV Compliance History = Converted to comply with RoHS directive
- Approved/Registered Standards = cULus

#### Environmental:

- Environmental - Category of Protection = RTIII
- Environmental - Ambient Temperature, Max. (°C [°F]) = 85 [185]
- Environmental - Ambient Temperature Class = 70°C to 85°C Class

#### Packaging Features:

- Packaging Method = Tube

#### Other:

- Series = P1/V23026
- Brand = Axicom

## Corporate Information

[About TE](#)  
[Investors](#)  
[News Room](#)  
[Supplier Portal](#)  
[Careers](#)  
[Terms & Conditions](#)  
[Privacy Policy](#)  
[AODA Accessibility Policy](#)  
[AODA Multi-Year Accessibility Plan](#)

## Quick Links

[Distributor Inventory](#)  
[Product Cross Reference](#)  
[Documents & Drawings](#)  
[Product Compliance Support Center](#)  
[Site Map](#)

## Customer Support

[Email or Chat With Us](#)  
[Find a Phone Number](#)  
[Knowledge Base](#)  
[Manage Your Account](#)

## Keep Me Informed



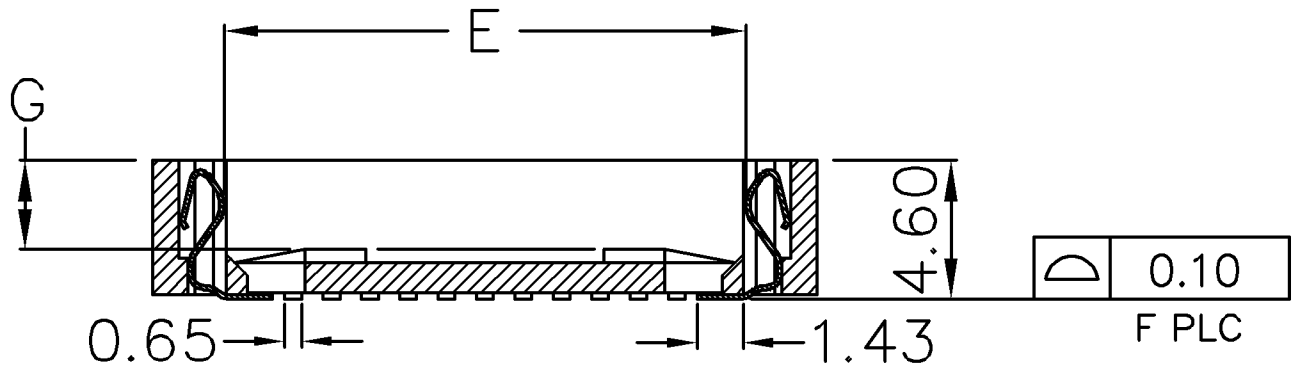
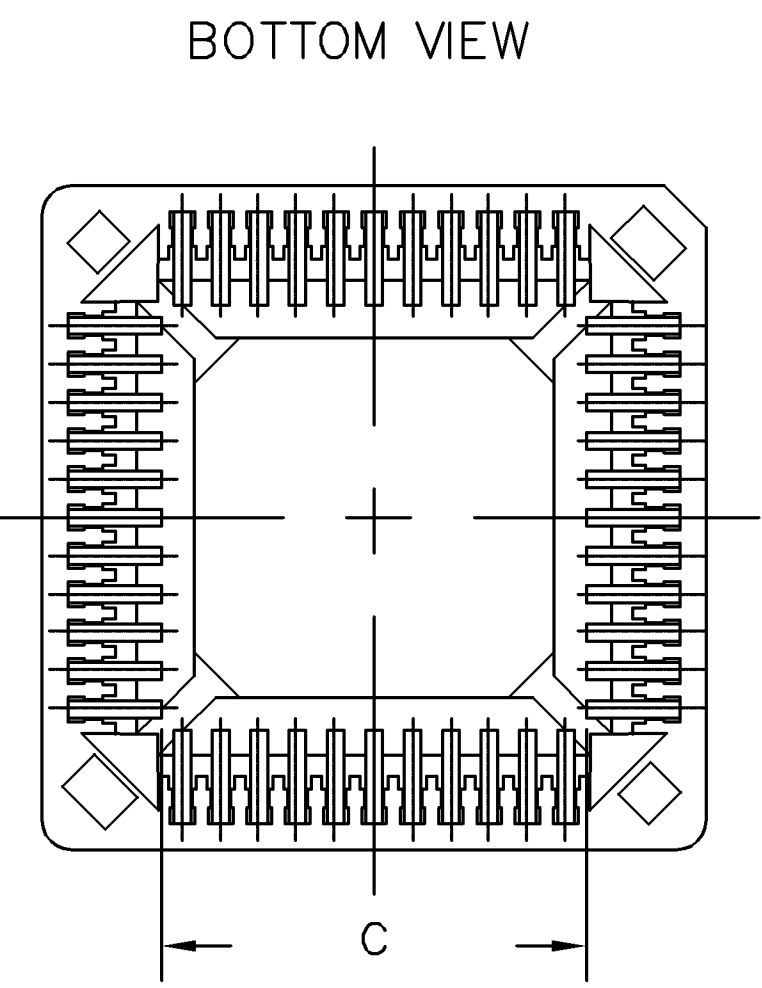
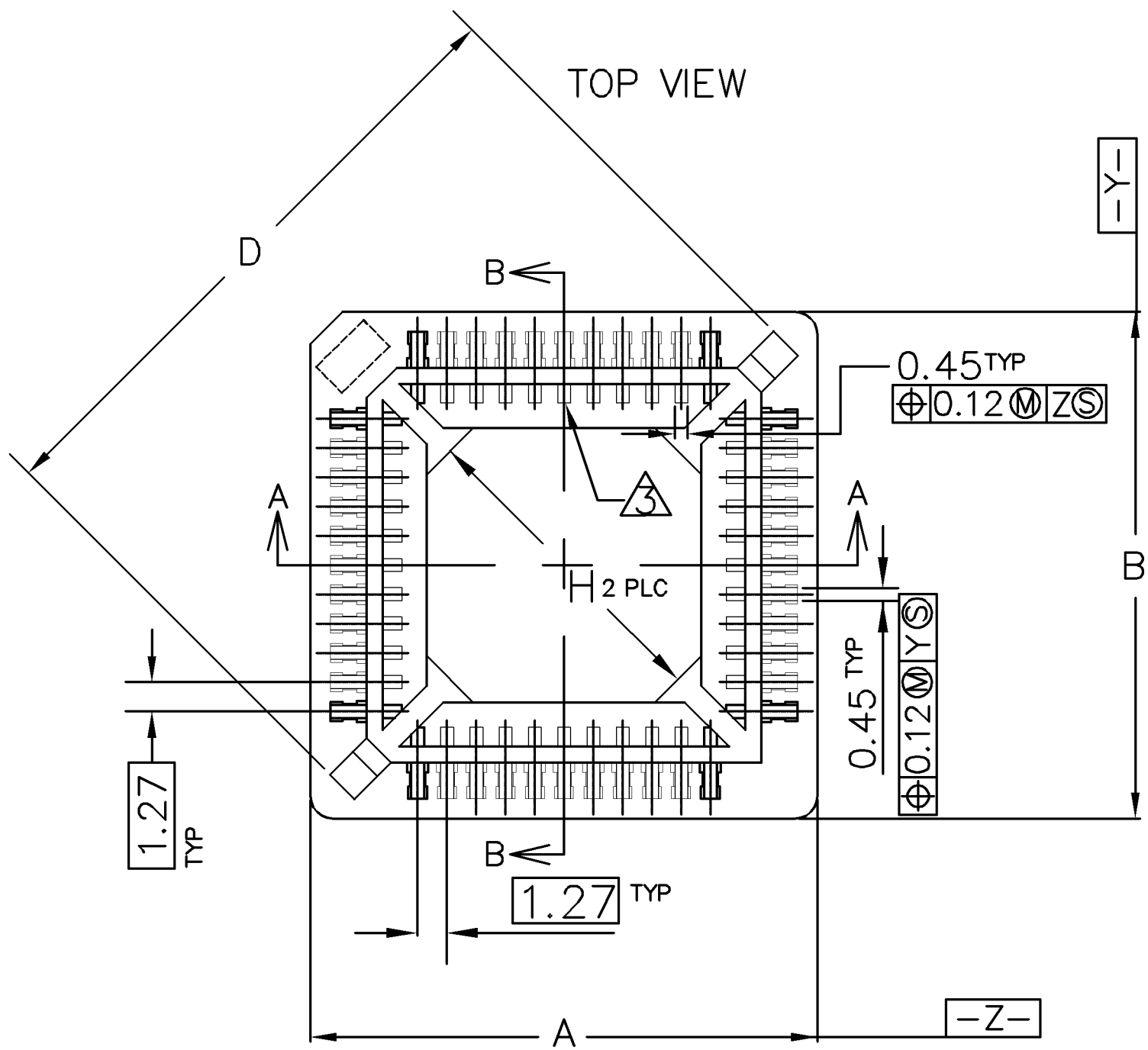
LOC	DIST	REVISIONS				
DW	—	P	LTR	DESCRIPTION	DATE	APVD
			A2	REVISED (ECR-11-006020)	23MAR11	WK

D

C

B

A



44 POSITION SHOWN

- 1 MATERIAL:  
HOUSING—HIGH TEMPERATURE THERMOPLASTIC, UL94V-0, COLOR: BROWN.  
CONTACT—PHOSPHOR BRONZE.
- 2 CONTACT FINISH: PLATE 0.00254 MIN. MATTE TIN OVER 0.00127 MIN. NICKEL ; ALL OVER.
- 3 PIN #1. TRIANGULAR IDENTIFIER 0.03 MAX RAISED ON FLOOR.
- 4 VIA HOLES NOT RECOMMENDED WITHIN SOCKET SHADOW AREA.
5. CURRENT RATING: 1 AMP.  
6. VOLTAGE RATING: 250V.  
7. CONTACT RESISTANCE: 20 MILLIOHMS, MAXIMUM.  
8. INSULATION RESISTANCE: 5,000 MEGOHMS, MINIMUM, INITIAL.  
9. DIELECTRIC WITHSTANDING VOLTAGE: 600 VAC RMS, MINIMUM.  
10. OPERATING TEMPERATURE: -55 TO +105 C.  
11. DURABILITY: 25 CYCLES.  
12. PLCC DEVICE MUST CONFORM TO JEDEC MS-018 (SQ.) OR MS-016 (RECT.).  
13. RESISTANCE TO SOLDERING HEAT: 260C MAXIMUM FOR 30 SECONDS MAXIMUM.
- 14 FOR 32 POS: SECTION A-A, E = 11.90  
SECTION B-B, E = 14.45
15. EXTRACTION TOOL: 822476-1

H	G	F	E	D	C	B	A	Part Status	Packaging	AMP P/N
8.74	2.60	32		21.89	9.25	19.57	16.90	ACTIVE	Tape	3-822516-7
8.74	2.60	32		21.89	9.25	19.57	16.90	ACTIVE	Tubes	822516-7
32.14	2.90	84	29.69	45.20	27.03	35.90	35.90	ACTIVE	Tape	3-822516-6
32.14	2.90	84	29.69	45.20	27.03	35.90	35.90	ACTIVE	Tubes	822516-6
24.83	2.90	68	24.61	37.98	21.95	30.82	30.82	ACTIVE	Tape	3-822516-5
24.83	2.90	68	24.61	37.98	21.95	30.82	30.82	ACTIVE	Tubes	822516-5
17.52	2.75	52	19.53	30.78	16.87	25.74	25.74	ACTIVE	Tape	3-822516-4
17.52	2.75	52	19.53	30.78	16.87	25.74	25.74	ACTIVE	Tubes	822516-4
4.04	2.75	20	9.36	16.38	6.71	14.36	14.36	ACTIVE	Tape	3-822516-3
4.04	2.75	20	9.36	16.38	6.71	14.36	14.36	ACTIVE	Tubes	822516-3
7.55	2.75	28	11.90	20.00	9.25	16.90	16.90	ACTIVE	Tape	3-822516-2
7.55	2.75	28	11.90	20.00	9.25	16.90	16.90	ACTIVE	Tubes	822516-2
14.16	2.95	44	16.99	27.20	14.33	22.00	22.00	ACTIVE	Tape	3-822516-1
14.16	2.95	44	16.99	27.20	14.33	22.00	22.00	ACTIVE	Tubes	822516-1

THIS DRAWING IS A CONTROLLED DOCUMENT.		DWN K.KREIDLER 18MAY2001	TE Connectivity			
		CHK K.KREIDLER 18MAY2001				
DIMENSIONS: MM		APVD K.KREIDLER 18MAY2001	NAME			
		PRODUCT SPEC 108-57858	PLCC SURFACE MOUNT LEAD FREE VERSION			
TOLERANCES UNLESS OTHERWISE SPECIFIED:		APPLICATION SPEC				
MATERIAL SEE NOTE		FINISH SEE NOTE	SIZE A3	CAGE CODE 00779	DRAWING NO C=822516	RESTRICTED TO —
			WEIGHT —	SCALE —	SHEET 1 OF 2	REV A2
			CUSTOMER DRAWING			

4

3

2

1

THIS DRAWING IS UNPUBLISHED.

RELEASED FOR PUBLICATION      AUG 2006

© COPYRIGHT 2009 BY TYCO ELECTRONICS CORPORATION. ALL RIGHTS RESERVED.

LOC

DIST

REVISIONS

P

LTR

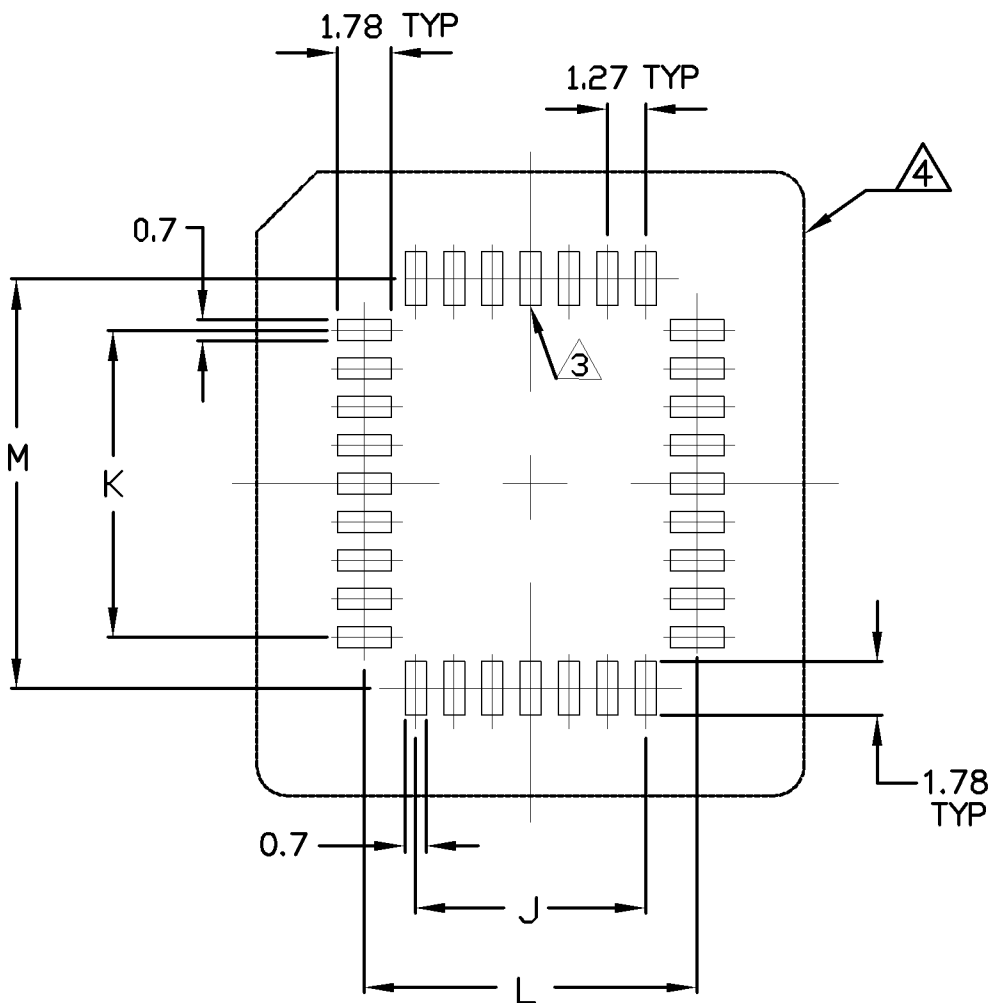
DESCRIPTION

DATE

DWN

APVD

SEE SHEET 1.

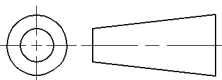


RECOMMENDED PCB FOOTPRINT

84	25.40	25.40	28.80	28.80
68	20.32	20.32	23.72	23.72
52	15.24	15.24	18.64	18.64
44	12.70	12.70	16.10	16.10
32	7.62	10.16	11.02	13.56
28	7.62	7.62	11.02	11.02
20	5.08	5.08	8.48	8.48
NO. OF POSITIONS	J	K	L	M

THIS DRAWING IS A CONTROLLED DOCUMENT.

DIMENSIONS:  
MM



MATERIAL

TOLERANCES UNLESS  
OTHERWISE SPECIFIED:

0 PLC ± -  
1 PLC ± -  
2 PLC ± -  
3 PLC ± -  
4 PLC ± -  
ANGLES ± -  
FINISH

DWN

CHK

APVD

PRODUCT SPEC

APPLICATION SPEC

WEIGHT

CUSTOMER DRAWING



TE Connectivity

NAME

PLCC SURFACE MOUNT  
LEAD FREE VERSION

SIZE

CAGE CODE

DRAWING NO

RESTRICTED TO

A300779

C=822516

SCALE

SHEET

2 OF 2

REV

A2