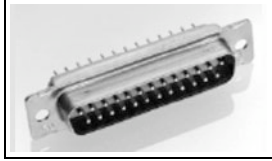


[My Cart](#) | [My Part Lists](#) | [Sign In/Register](#)[English \(Change\)](#)

Have a Question?  
Chat with a Product  
Information Specialist

What can we help you find?

[Products](#) [Industries](#) [Resources](#) [About TE](#) [My Account](#) [Innovation](#) [Support Center](#)**205556-2 Product Details**[Share](#)[Print](#)[Email](#)**205556-2**

TE Internal Number: 205556-2



Active

[View 3D PDF](#)**Subminiature D Pins/Sockets for MIL-C-24308 and MIL-C-39029**

Not EU RoHS or ELV Compliant (Find RoHS Compliant Alternates)

**Product Highlights:**

- Connector
- Product Series = 109
- Connector Style = Plug
- Contact Type = Pin
- Density = Standard

[View all Features](#)**Quick Links**

- ▶ [Pricing & Availability](#)
- ▶ [Search for Tooling](#)
- ▶ [Product Feature Selector](#)
- ▶ [Contact Us About This Product](#)

[Add to My Part List](#)[Request Sample](#)[Find Similar Products](#)[Buy Product](#)**Documentation & Additional Information****Product Drawings:**

- [AMPLIMITE, KIT,HDM-20, SERIES, PLUG, SIZE 1, 9 POSITION \(PDF, English\)](#)

**Catalog Pages/Data Sheets:**

- None Available

**Product Specifications:**

- None Available

**Application Specifications:**

- None Available

**Instruction Sheets:**

- None Available

**CAD Files:** ([CAD Format & Compression Information](#))

- [2D Drawing](#) (DXF, Version K)
- [3D Model](#) (IGES, Version K)
- [3D Model](#) (STEP, Version K)

[List all Documents](#)**Additional Information:**

- [Product Line Information](#)

**Additional Product Images:**

- [Insert Arrangement](#)

**Related Products:**

- [Tooling](#)

**Product Features (Please use the Product Drawing for all design activity)****Product Type Features:**

- [Product Type](#) = Connector
- [Product Series](#) = 109
- [Shell Size](#) = 1
- [Shell Material](#) = Steel
- [Termination Method to Wire/Cable](#) = Crimp
- [Mounting Hole Diameter](#) (mm [in]) = 3.05 [.120]

**Body Features:**

- [Blindmate](#) = No
- [Non-Magnetic](#) = No
- [Rear Grommet](#) = No
- [Power/Signal/Coax Combination](#) = No
- [Shell Plating](#) = Cadmium
- [Mount Style](#) = Mounting Holes
- [Retention Clip Material](#) = Stainless Steel

**Contact Features:**

- [Contact Type](#) = Pin
- [Contact Size](#) = 20
- [Contact Style](#) = Crimp Snap-in

**Housing Features:**

- [Connector Style](#) = Plug

**Configuration Features:**

- [Density](#) = Standard
- [Number of Positions](#) = 9

**Industry Standards:**

- [Government/Industry Qualification](#) = Yes
- [Government/Industry Part Number](#) = M24308/4-1F
- [RoHS/ELV Compliance](#) = Not ELV/RoHS compliant
- [Lead Free Solder Processes](#) = Not relevant for lead free process
- [NASA Qualification](#) = No

**Conditions for Usage:**

- [Applies To](#) = Wire/Cable

**Other:**

- [Brand](#) = AMP
- [Comment](#) = Size 20 contacts supplied with connectors are loose piece.

[Corporate Information](#)[Quick Links](#)[Customer Support](#)



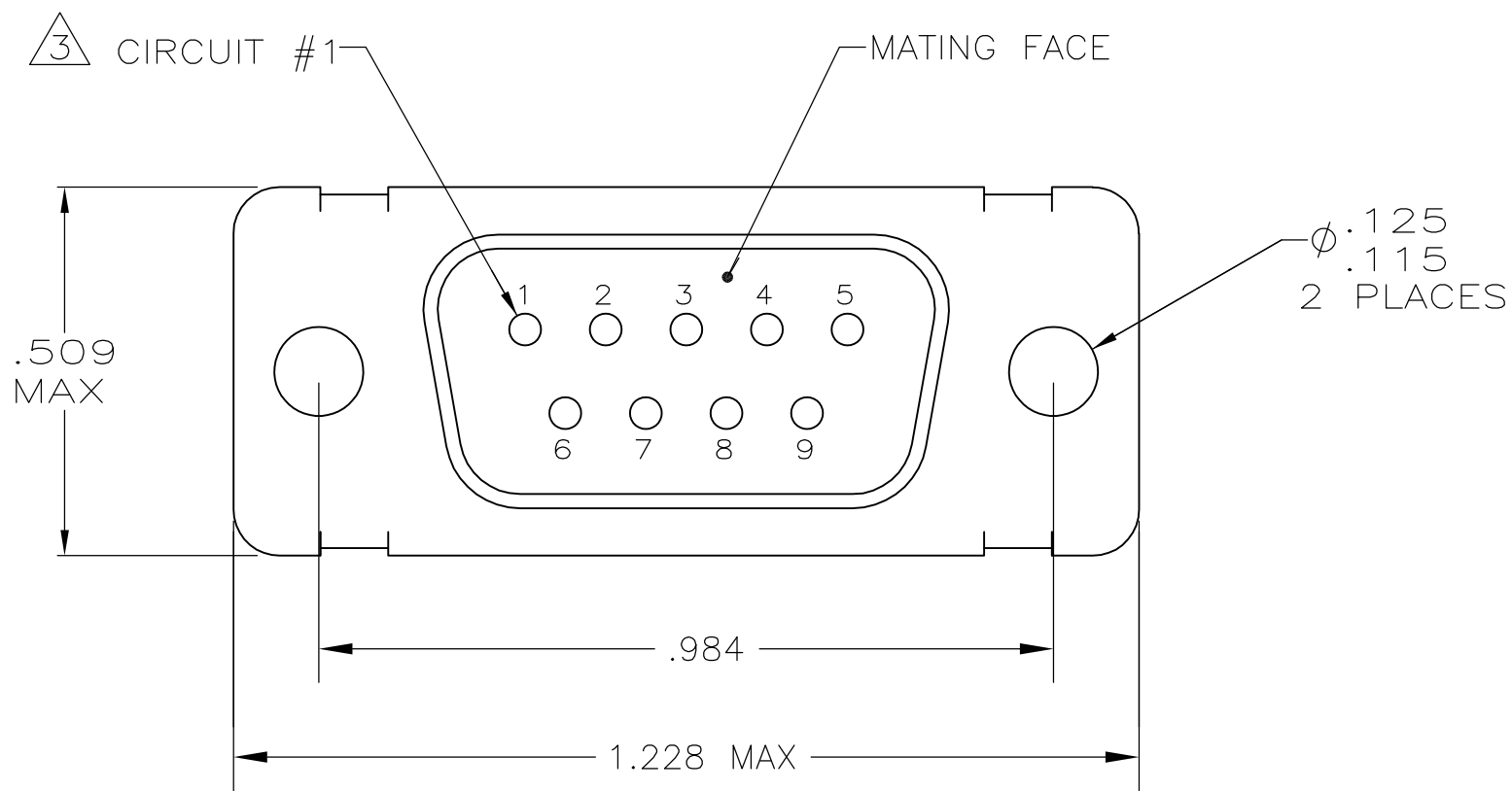
THIS DRAWING IS UNPUBLISHED.

RELEASED FOR PUBLICATION

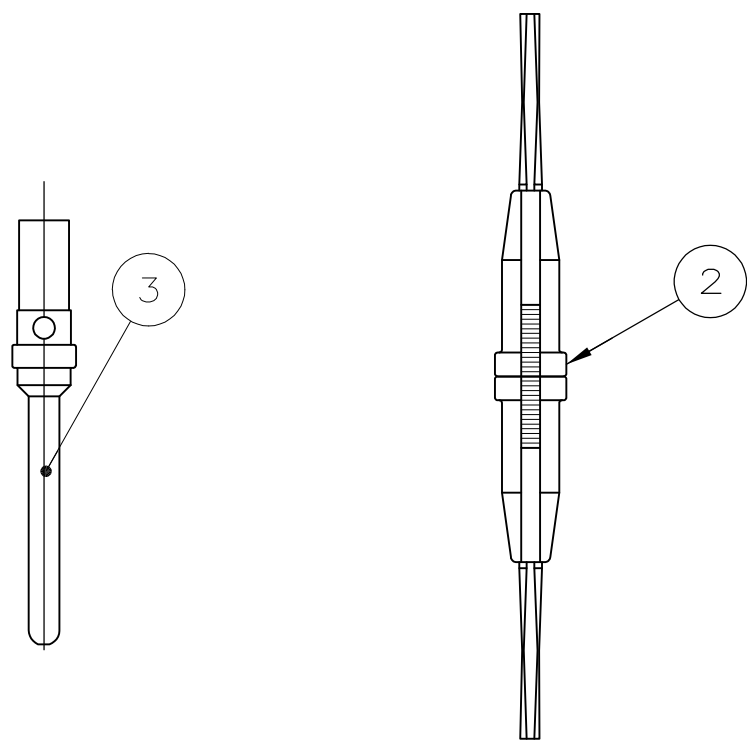
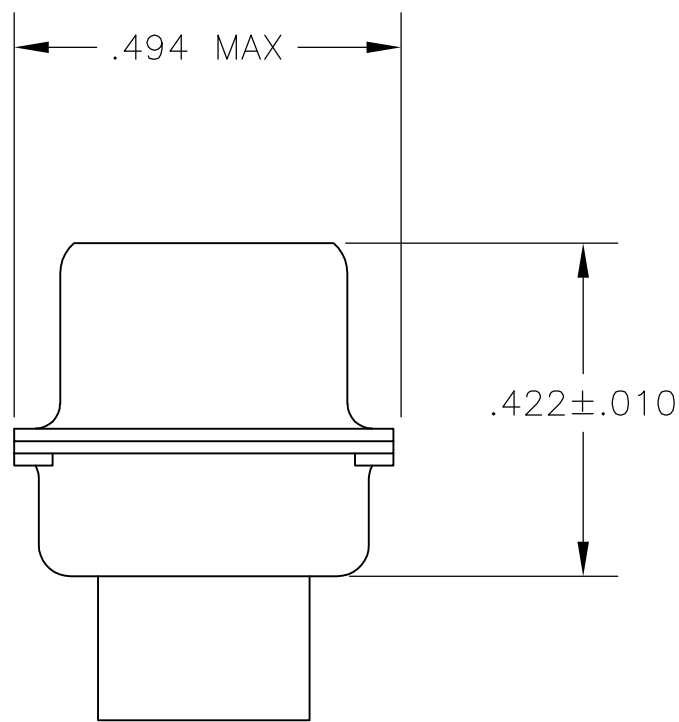
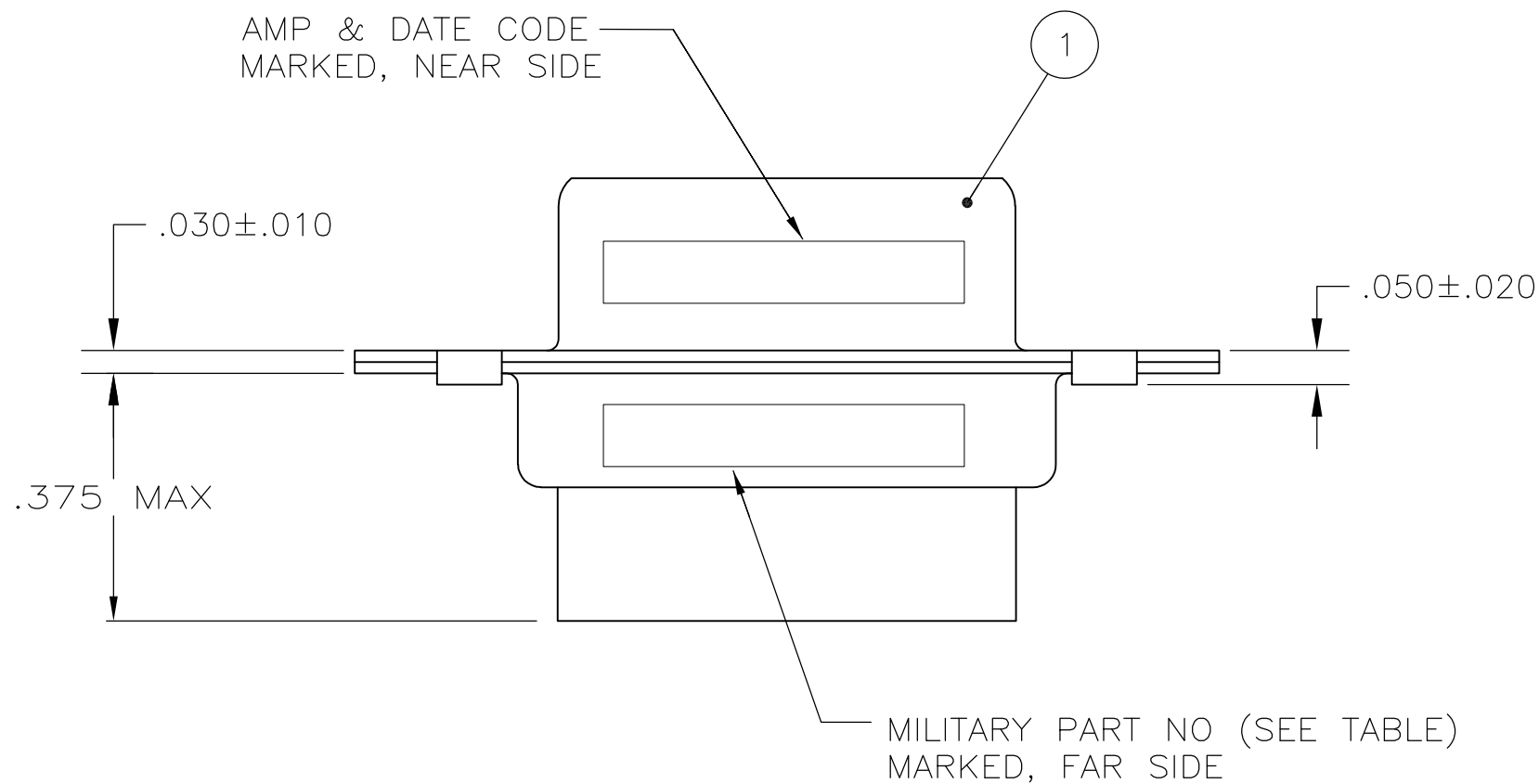
© COPYRIGHT - By -

ALL RIGHTS RESERVED.

LOC  —	DIST  —	REVISIONS					
		P	LTR	DESCRIPTION	DATE	DWN	APVD
			H	REV PER ECO 13-012379	8-1-13	CT	CD



1 FOR CONNECTOR ASSEMBLIES WITHOUT CONTACTS, TE CONNECITVITY CONTACT PART NOS 205089-1 MUST BE ORDERED SEPARATELY. CONNECTORS WITH CONTACTS ARE SUPPLIED WITH CONTACT 205089-1



SUPERSEDED BY 207252-2 AND 205089-1	OBSOLETE	205556-3	M24308/8-6F	205089-1	91067-2	205162-2	205556-5
		205556-3	M24308/8-1F	205089-1	-	205162-2	205556-4
		205556-3	M24308/4-6F	205089-1	91067-2	205162-1	205556-3
		205556-2	M24308/4-1F	205089-1	-	205162-1	205556-2
SUPERSEDED BY 205162-1 AND 91067-2		205556-1	-	-	91067-2	205162-1	205556-1
P/N MARKED ON PACKAGE			MILITARY P/N MARKED ON PACKAGE	3 PIN CONTACT QTY. = 9	1 INSERTION/EXTRACTION TOOL QTY. = 1	1 PLUG ASSY QTY. = 1	PART NUMBER

THIS DRAWING IS A CONTROLLED DOCUMENT.		DWN T.THOMPSON 05-24-94	TE Connectivity			
DIMENSIONS: INCHES		CHK H.WYNKOOP 06-17-94				
	TOLERANCES UNLESS OTHERWISE SPECIFIED:	APVD H.WYNKOOP 06-17-94	NAME			
	0 PLC ± - 1 PLC ± - 2 PLC ± - 3 PLC ± .005 4 PLC ± - ANGLES ± -	PRODUCT SPEC				
MATERIAL		APPLICATION SPEC	SIZE CAGE CODE DRAWING NO RESTRICTED TO			
FINISH		WEIGHT				
-		-	A2 00779 C=205556			
		CUSTOMER DRAWING	SCALE 4:1 SHEET 1 OF 1 REV H			