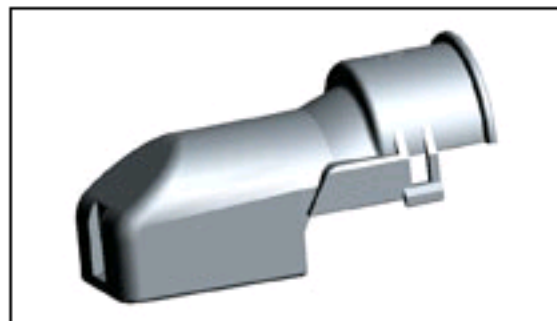




2112452-1 Product Details



2112452-1

TE Internal Number: 2112452-1



Active



[View 3D PDF](#)

Multiple Contact Point (MCP) & MCON Contact Systems



[Always EU RoHS/ELV Compliant \(Statement of Compliance\)](#)

Product Highlights:

- Accessory
- Accessory Type = Cover
- For Use With Receptacle Housing
- Multiple Contact Point (MCP) Series
- 22 Positions

[View all Features](#)

Quick Links

- ▶ [Check Pricing & Availability](#)
- ▶ [Search for Tooling](#)
- ▶ [Product Feature Selector](#)
- ▶ [Contact Us About This Product](#)



[Add to My Part List](#)



[Request Sample](#)



[Find Similar Products](#)



[Buy Product](#)

Documentation & Additional Information

Product Drawings:

- [COVER FOR 22 POS. Kappe fuer 22 pol. Buchsengehaeuse](#) (PDF, English)

Catalog Pages/Data Sheets:

- None Available

Product Specifications:

- None Available

Application Specifications:

- None Available

Instruction Sheets:

- None Available

CAD Files: ([CAD Format & Compression Information](#))

- [2D Drawing](#) (DXF, Version A)
- [3D Model](#) (IGES, Version A)
- [3D Model](#) (STEP, Version A)

[List all Documents](#)

Related Products:

- [Tooling](#)

Product Features (Please use the Product Drawing for all design activity)

Product Type Features:

- Product Type = Accessory
- Accessory Type = Cover
- For Use With = Receptacle Housing
- Series = Multiple Contact Point (MCP)
- Mating Area Interface Dimensions (mm [in]) = 1.50 [.059], 2.79 [.110], 6.30 [.248]
- Mount Angle = Right Angle
- Color = Black

Body Features:

- Number of Positions = 22

Industry Standards:

- [RoHS/ELV Compliance](#) = RoHS compliant, ELV compliant
- [Lead Free Solder Processes](#) = Not relevant for lead free process
- RoHS/ELV Compliance History = Always was RoHS compliant

Packaging Features:

- Packaging Method = Loose Piece

Other:

- Brand = Tyco Electronics
- Comment = For use with Receptacle Housing Base P/N 1823440.

Corporate Information

[Who We Are](#)

[Investors](#)

[News Room](#)

[Supplier Portal](#)

[Careers](#)

Quick Links

[Check Distributor Inventory](#)

[Cross Reference](#)

[Find Documents & Drawings](#)

[Product Compliance Support Center](#)

[Site Map](#)

Customer Support

[Email or Chat With Us](#)

[Find a Phone Number](#)

[Search Knowledge Base](#)

[Manage your Account](#)

Keep Me Informed

Receive TE News, Events & Technology Updates

