

[My Cart](#) | [My Part Lists](#) | [Sign In/Register](#)[English \(Change\)](#)

Have a Question?

Chat with a Product
Information Specialist

What can we help you find?

[Products](#) [Industries](#) [Resources](#) [About TE](#) [My Account](#) [Innovation](#) [Support Center](#)

794271-1 Product Details

[Share](#)[Print](#)[Email](#)

794271-1

TE Internal Number: 794271-1



Active

[View 3D PDF](#)

.250" Centerline, 600 V, 19 - 36 A max

Always EU RoHS/ELV Compliant (Statement of
Compliance)

Product Highlights:

- Universal MATE-N-LOK Product Line
- Wire-to-Wire
- Accessory
- Accessory Type = Interface Seal
- Glow Wire Rating = Standard Part - Not Glow Wire

[View all Features](#)

Quick Links

- ▶ [Pricing & Availability](#)
- ▶ [Search for Tooling](#)
- ▶ [Product Feature Selector](#)
- ▶ [Contact Us About This Product](#)

[Add to My Part List](#)[Request Sample](#)[Find Similar Products](#)[Buy Product](#)

Documentation & Additional Information

Product Drawings:

- [INTERFACE SEAL,3 CIRCUIT, UNIVERSAL MATE-N-LOK](#) (PDF, English)

Catalog Pages/Data Sheets:

- [2_PIECE_POWER_CONNECTORS_qrg_4-1773458-1](#) (PDF, English)
- [SOFT_SHELL_PIN_SOCKET_CONNECTORS_STANDARD_DENSITY](#) (PDF, English)

Product Specifications:

- None Available

Application Specifications:

- [MATE-N-LOK Sealed Universal Connectors](#) (PDF, English)

Instruction Sheets:

- [Universal MATE-N-LOK Splash Proof Seals](#) (PDF, English)

CAD Files: (CAD Format & Compression Information)

- [2D Drawing](#) (DXF, Version E)
- [3D Model](#) (IGES, Version E)
- [3D Model](#) (STEP, Version E)

[List all Documents](#)

Additional Information:

- [Product Line Information](#)

Additional Product Images:

- [Schematic](#)

Related Products:

- [Tooling](#)

Product Features (Please use the Product Drawing for all design activity)

Product Type Features:

- Product Line = Universal MATE-N-LOK
- Product Type = Accessory
- Accessory Type = Interface Seal
- Accessory Color = Blue
- Sealed = No

Contact Features:

- Contact Layout = In-Line
- Multiple Contact Types = Without

Housing Features:

- Centerline (mm [in]) = 6.35 [0.2499]
- Housing Material = Silicone

Configuration Features:

- Number of Positions = 3

Industry Standards:

- [RoHS/ELV Compliance](#) = RoHS compliant, ELV compliant
- [Lead Free Solder Processes](#) = Not relevant for lead free process
- RoHS/ELV Compliance History = Always was RoHS compliant

Conditions for Usage:

- Glow Wire Rating = Standard Part - Not Glow Wire
- For Use With = Universal MATE-N-LOK Sealed Connectors

Operation/Application:

- Application Use = Wire-to-Wire

Packaging Features:

- Packaging Method = Bag
- Packaging Quantity = 500

Other:

- Brand = AMP

Corporate Information

[About TE](#)[Investors](#)

Quick Links

[Distributor Inventory](#)[Product Cross Reference](#)

Customer Support

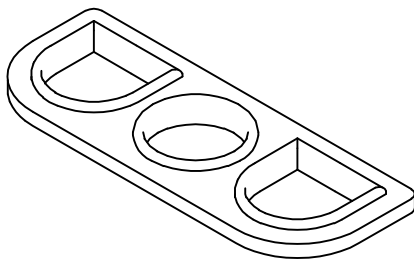
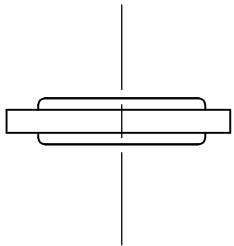
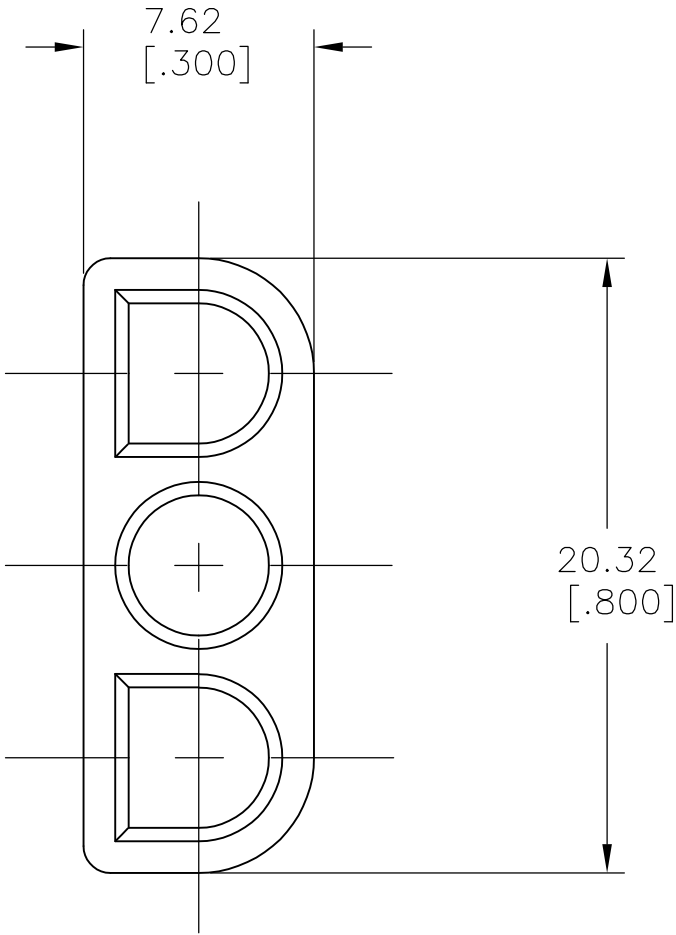
[Email or Chat With Us](#)[Find a Phone Number](#)

LOC	DIST	REVISIONS				
CM	53	P	LTR	DESCRIPTION	DATE	DWN
			C	REVISED PER ECR-12-011218	08OCT12	KH
						APVD
						TM

- 1

MATERIAL: SELF LUBRICATING SILICON RUBBER
COLOR: BLUE
- 2

DIMENSIONS IN BRACKETS ARE IN INCHES.



3-DIMENSIONAL MODEL
NTS

D

C

B

A

D


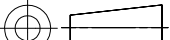
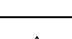
C

B

A

794271

794271-1
PART NUMBER

THIS DRAWING IS A CONTROLLED DOCUMENT.		DWN B. LEWIS 3-25-97		 TE Connectivity			
		CHK R. SWING 3-25-97					
DIMENSIONS: mm [INCHES]		APVD D. SELF 3-25-97		NAME INTERFACE SEAL,3 CIRCUIT, UNIVERSAL MATE-N-LOK™ —			
		PRODUCT SPEC —					
		APPLICATION SPEC —					
MATERIAL		WEIGHT —		SIZE A2	CAGE CODE 00779	DRAWING NO C=794271	RESTRICTED TO —
		FINISH —		CUSTOMER DRAWING			
				SCALE 4:1	SHEET 1 of 1	REV C	