

4-1825136-9 Product Details

[Share](#) [Print](#) [Email](#)



4-1825136-9
(A101SYZQ04)

TE Internal Number: 4-1825136-9

 **Active**

 [View 3D PDF](#)

Toggle Switches

 **Always EU RoHS/ELV Compliant**
(Statement of Compliance)

Product Highlights:

- Gemini A Series
- Single Pole - Double Throw Configuration (Pole-Throw)
- Current Rating = 5 A
- Mount Style = Solder
- Termination Type = Wire Lugs

[View all Features](#)

Quick Links

- ▶ [Pricing & Availability](#)
- ▶ [Search for Tooling](#)
- ▶ [Product Feature Selector](#)
- ▶ [Contact Us About This Product](#)

[Add to My Part List](#)

[Request Sample](#)

[Find Similar Products](#)

[Buy Product](#)

Documentation & Additional Information

Product Drawings:

- [GEMINI A SERIES TOGGLE SWITCH, SINGLE POLE, 2 POSITI...](#) (PDF, English)

Catalog Pages/Data Sheets:

- [SWITCHES_CORE_PROGRAM_CATALOG](#) (PDF, English)
- [GEMINI_SERIES_SWITCHES_QUICK_REF_GUIDE_2-1773458-5](#) (PDF, English)

Product Specifications:

- None Available

Application Specifications:

- None Available

Instruction Sheets:

- None Available

CAD Files: (CAD Format & Compression Information)

- [2D Drawing](#) (DXF, Version A)
- [3D Model](#) (IGES, Version A)
- [3D Model](#) (STEP, Version A)

[List all Documents](#)

Additional Information:

- [Product Line Information](#)

Additional Product Images:

- [Product Photo](#)

Related Products:

- [Tooling](#)

Product Features (Please use the Product Drawing for all design activity)

Product Type Features:

- Series = Gemini A
- Termination Type = Wire Lugs

Electrical Characteristics:

- Current Rating (A) = 5

Termination Features:

- Seal Type = Terminal Seal (epoxy)

Body Features:

- Mount Style = Solder
- Bushing Style = Threaded
- Bushing Type = 1/4-40

Housing Features:

- Toggle Actuation = Vertical
- Toggle Style = Baton Long
- Toggle Length (mm [in]) = 10.40 [0.410]
- Process Sealed = No

Configuration Features:

- Configuration (Pole-Throw) = Single Pole - Double Throw
- [Operating Function](#) = On On

Industry Standards:

- [RoHS/ELV Compliance](#) = RoHS compliant, ELV compliant
- [Lead Free Solder Processes](#) = Wave solder capable

Contact Features: <ul style="list-style-type: none">Contact Plating = Silver	to 260°C, Wave solder capable to 240°C, Wave solder capable to 265°C <ul style="list-style-type: none">RoHS/ELV Compliance History = Always was RoHS compliant Other: <ul style="list-style-type: none">Brand = Alcoswitch
---	---

Corporate Information

[About TE](#)
[Investors](#)
[News Room](#)
[Supplier Portal](#)
[Careers](#)
[Terms & Conditions](#)
[Privacy Policy](#)

Quick Links

[Distributor Inventory](#)
[Product Cross Reference](#)
[Documents & Drawings](#)
[Product Compliance Support Center](#)
[Site Map](#)

Customer Support

[Email or Chat With Us](#)
[Find a Phone Number](#)
[Knowledge Base](#)
[Manage Your Account](#)

Keep Me Informed



LOC	DIST	REVISIONS					
AD	00	P	LTR	DESCRIPTION	DATE	DWN	APVD
			A4	REVISED PER ECO-11-004587	11MAR11	RK	HMR

NOTES:

- 1
- ALL MATERIALS AND FINISHES SHALL COMPLY WITH EU DIRECTIVE 2002/95/EC OF 27JAN2003 (ROHS).
- 2
- EACH SWITCH WITH THREADED BUSHINGS SUPPLIED WITH THE FOLLWING MOUNTING HARDWARE:
(2) HEX NUTS
(1) INTERNAL TOOTH LOCKWASHER
(1) LOCATING RING.
- 3
- G CONTACT OPTION CAN BE USED FOR SIGNAL OR POWER LEVEL SWITCHING. IF SWITCH IS USED AT LEVELS EXCEEDING .4VA @ 20V AC/DC, SWITCH IS RENDERED FOR POWER SWITCHING ONLY DUE TO ARC REMOVAL OF GOLD PLATING. RATING STAMPED ON FRAME IS 2A 250VAC, 5A 120VAC.



DATE CODE AND COUNTRY OF ORIGIN MAY APPEAR ON EITHER SIDE OF SWITCH.



LENGTH OF TOGGLE REDUCED BY .020 WITH A, AV2, V30 OR V40 VERTICAL SUPPORT BRACKET OPTIONS.

FUNCTION CHART

FUNCTION			
	1 2 3	1 2 3	1 2 3
01	ON	NONE	ON
08	ON	NONE	(ON)
TERMINALS CONNECTED	2-3	---	1-2
None: No mechanical position Off: Mechanical position with no electrical connection (On): Momentary action			

PART NUMBER SEQUENCE CHART

MODEL	FUNCTION	TOGGLE	BUSHING	TERMINAL	CONTACT	RoHS
A1	01 08	K	CW	A	B	04
		K1	D	AV2	G	
		L	D9	C	Q	
		L1	H	V30		
		L2	Y	V40		
		M	Y9	W		
		P3		W4		
		S		Z		
		T		Z3		
		T1				

EXAMPLE: A101SYCQ04

SPECIFICATIONS CHART	
RATING, B CONTACTS	.4VA MAX @20V MAX. AC OR DC
RATING, G CONTACTS—SEE NOTE 3	.4VA MAX @20V MAX. AC OR DC OR 5A @120 VAC OR 28 VDC (RESISTIVE)
	2A @250 VAC (RESISTIVE)
RATING, Q CONTACTS	5A @120 VAC OR 28 VDC (RESISTIVE)
	2A @250 VAC (RESISTIVE)
ELECTRICAL LIFE	6,000 CYCLES AT RATED LOAD
CONTACT RESISTANCE	10 MILLIOHMS MAX INITIAL @ 2-4VDC, 100ma
INSULATION RESISTANCE	1,000 MEGOHMS MIN
DIELECTRIC WITHSTANDING VOLTAGE	1,000 V RMS AT SEA LEVEL
OPERATING TEMPRATURE	-30C TO 85C

THIS DRAWING IS A CONTROLLED DOCUMENT.		DWN B.S.VISWESWARA	14APR05	TE Connectivity		
DIMENSIONS: INCHES		CHK M.ZITTO	-			
	TOLERANCES UNLESS OTHERWISE SPECIFIED:	APVD P.BROUILLETTE	-	NAME GEMINI A SERIES TOGGLE SWITCH, SINGLE POLE, 2 POSITION FUNCTIONS (01 & 08)		
		PRODUCT SPEC	-			
		APPLICATION SPEC	-			
MATERIAL -	FINISH -	WEIGHT -	-	SIZE A2	CAGE CODE 00779	DRAWING NO C=1825136
CUSTOMER DRAWING				RESTRICTED TO -	SCALE 3:1	SHEET 1 of 4
				REV A4		

S STANDARD

DIM L	BUSHING TYPE	DIM L	BUSHING TYPE
.200	Y, H	.410	Y, H
.270	D, D9	.480	D, D9



NO BUSHING OPTION NEEDED



NO BUSHING OPTION NEEDED



DIM L	BUSHING TYPE
.840	Y, H
.910	D, D9



DIM L	BUSHING TYPE
.640	Y, H
.710	D, D9



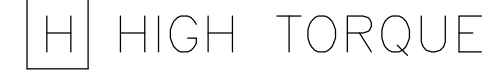
DIM L	BUSHING TYPE
.550	Y, H
.620	D, D9




D9 UNTHREADED




CW THREADED SPLASHPROOF

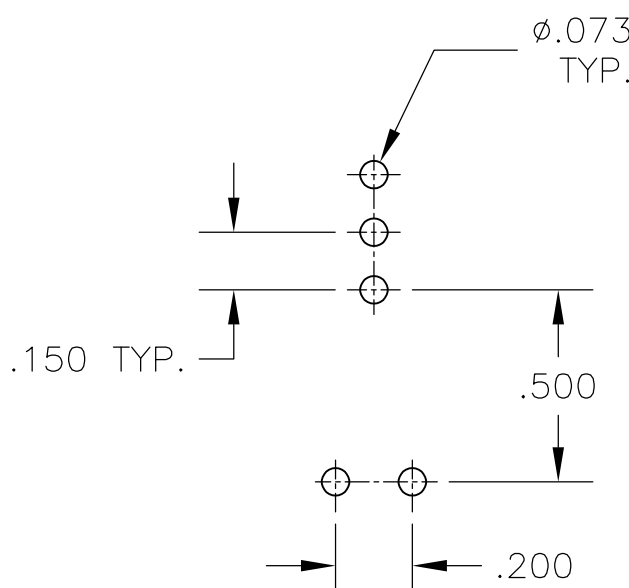
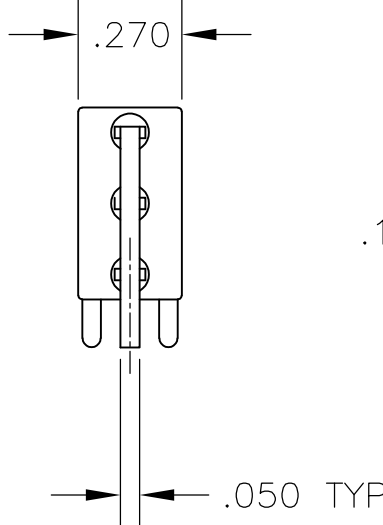
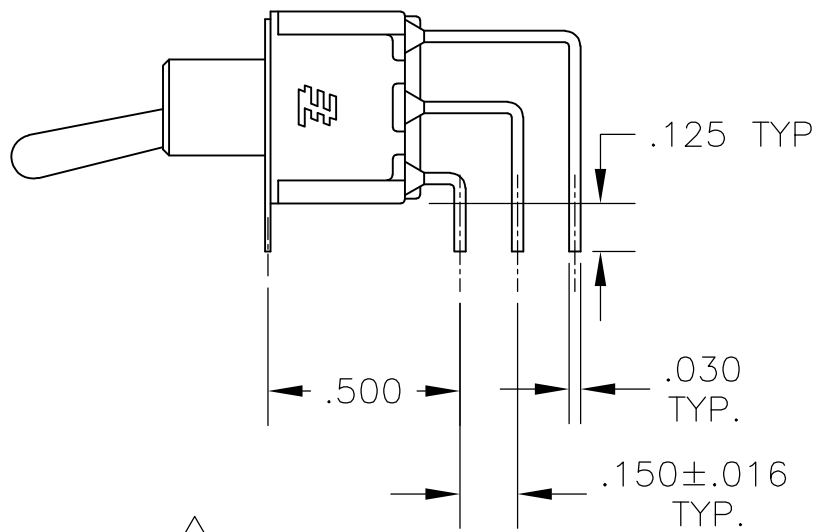
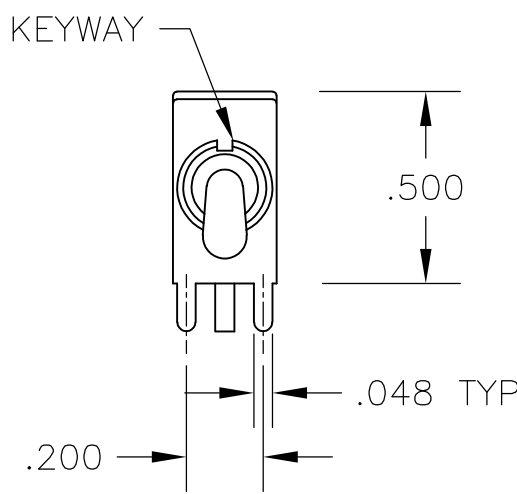


DWN	14APR05
B S VISWESWARA	

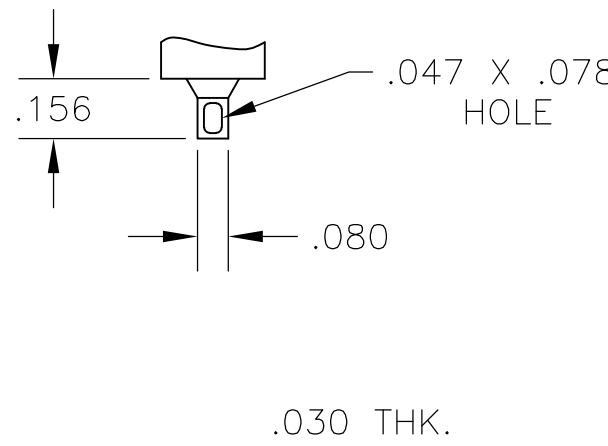
DIMENSIONS:		TOLERANCES UNLESS OTHERWISE SPECIFIED:	
INCHES		0 PLC	± —
	1 PLC	± —	
	2 PLC	± —	
	3 PLC	± .010	
	4 PLC	± —	
	ANGLES ± 2°		
MATERIAL		FINISH	
—		—	

DWN	B.S.VISWESWARA	14APROS	 TE Connectivity			
CHK	M. ZITTO	—				
APVD	P. BROUILLETTE	—	NAME			
PRODUCT SPEC	—	GEMINI A SERIES TOGGLE SWITCH, SINGLE POLE, 2 POSITION FUNCTIONS (01 & 08)				
APPLICATION SPEC	—	—				
WEIGHT	—	SIZE	CAGE CODE	DRAWING NO	RESTRICTED TO	
		A2	00779	C-1825136	—	
CUSTOMER DRAWING				SCALE	SHEET	REV
				2.1	2 of 4	A4

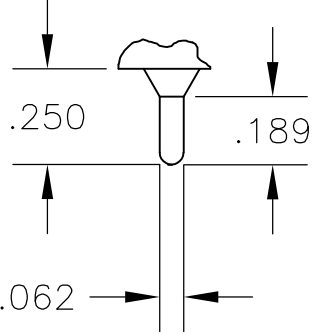
LOC	DIST	REVISIONS					
		P	LTR	DESCRIPTION	DATE	DWN	APVD
AD	00		—	SEE SHEET 1	—	—	—



RECOMMENDED
PCB LAYOUT



.030 THK.

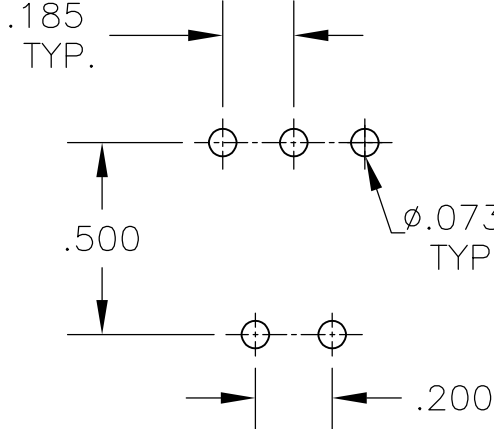
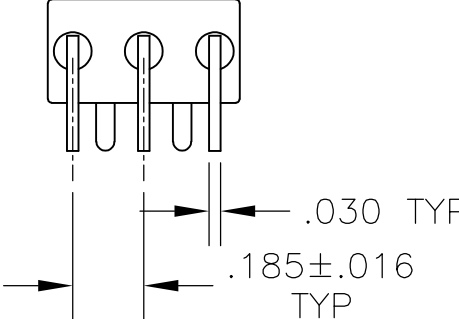
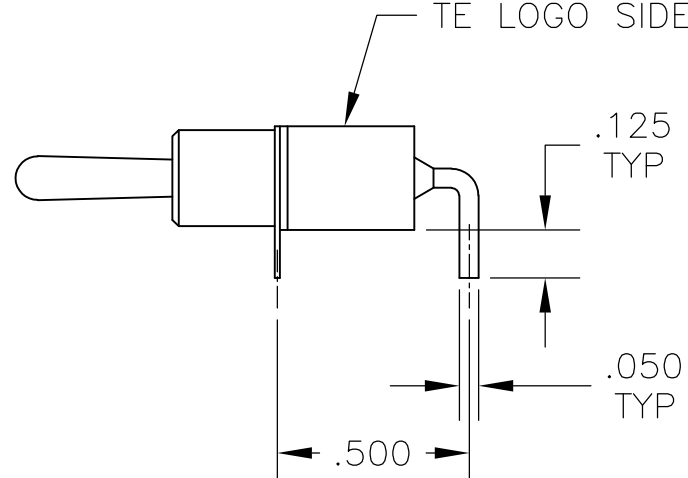
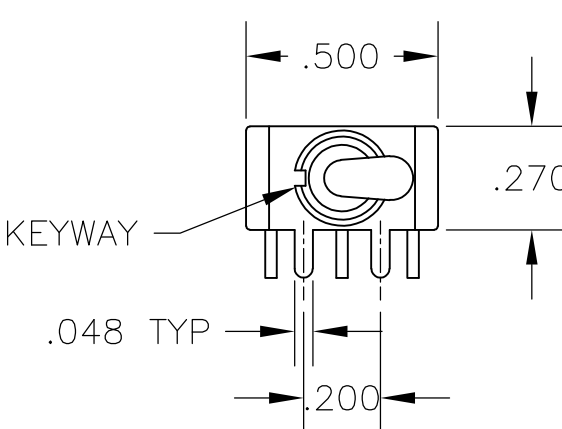


.030 THK.

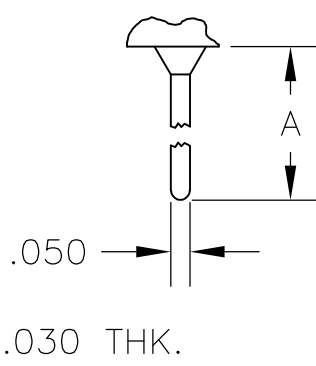
AV2 VERTICAL RIGHT ANGLE 5

Z WIRE LUG

Z3 QUICK CONNECT



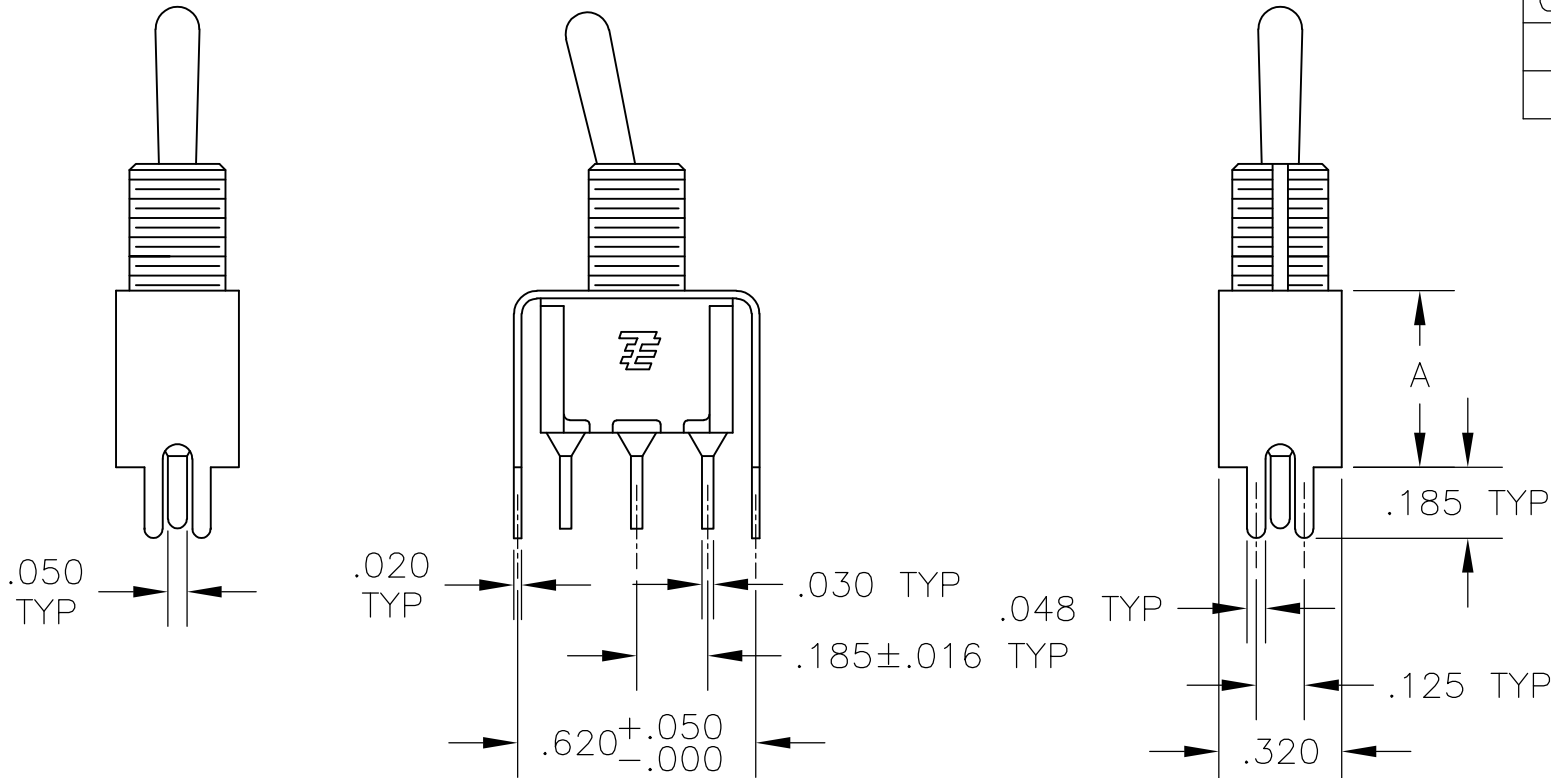
RECOMMENDED
PCB LAYOUT



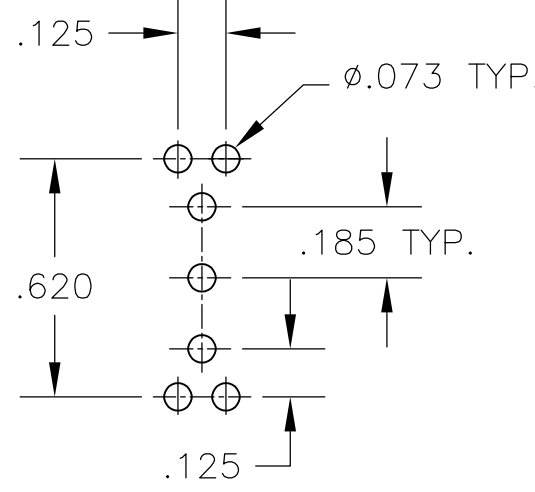
OPTION	DIM A
W	.736
W4	1.062

A RIGHT ANGLE 5

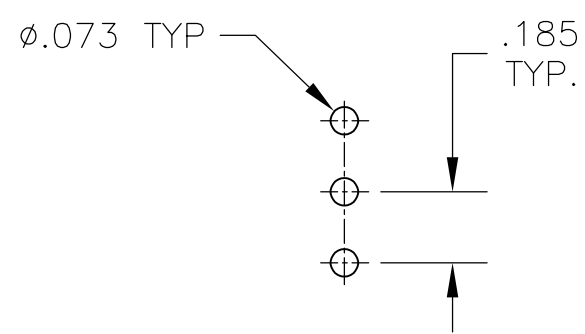
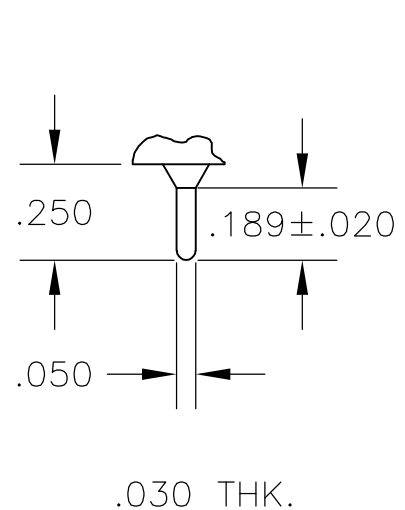
W W4 WIRE WRAP



OPTION	DIM A
V30	.460
V40	.630



RECOMMENDED
PCB LAYOUT



RECOMMENDED
PCB LAYOUT

V30 V40 5
VERTICAL SUPPORT BRACKET

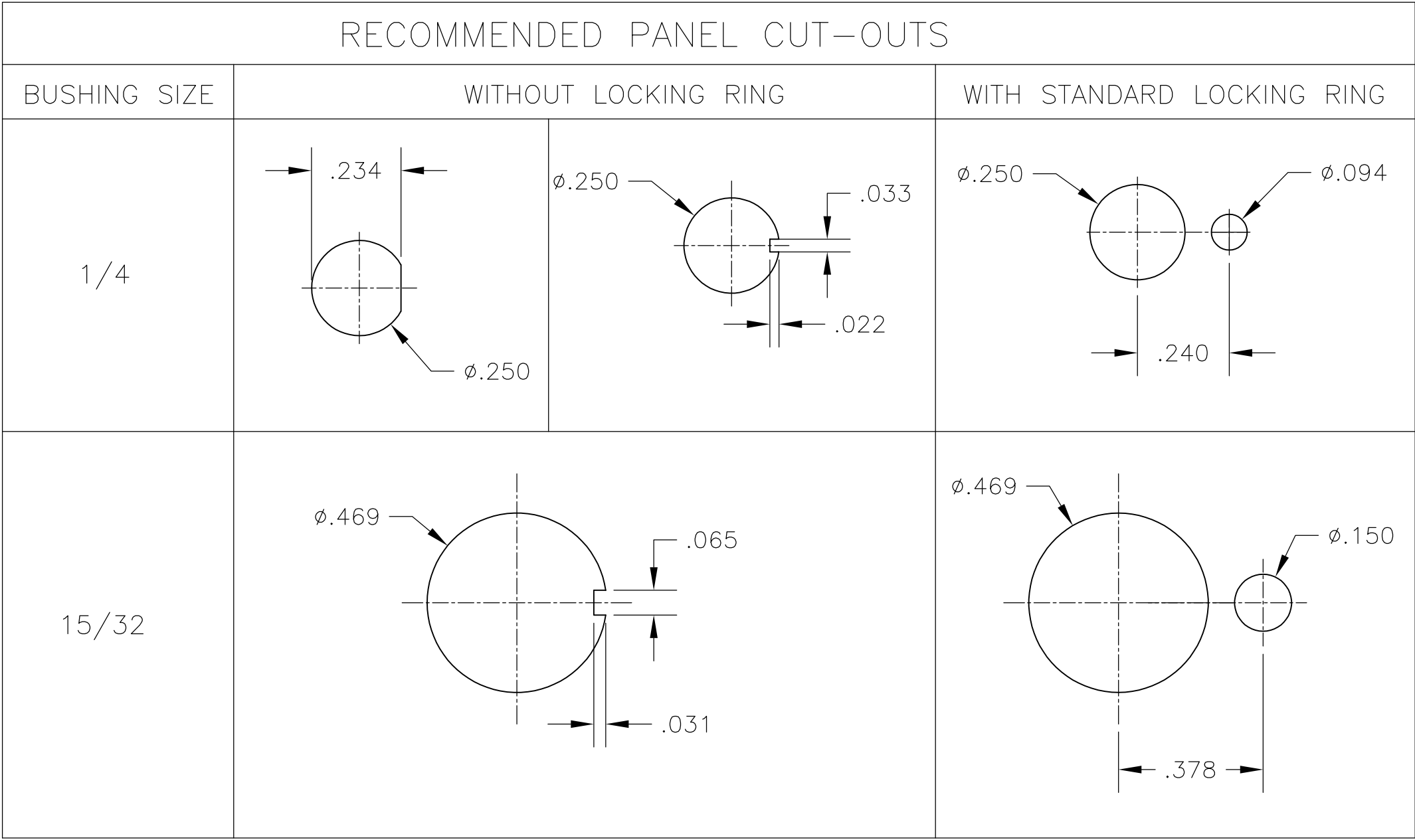
C PRINTED CIRCUIT

THIS DRAWING IS A CONTROLLED DOCUMENT.		DWN B.S.VISWESWARA	14APR05	TE Connectivity		
DIMENSIONS: INCHES		CHK M.ZITTO	-			
		APVD P.BROUILLETTE	-	NAME GEMINI A SERIES TOGGLE SWITCH, SINGLE POLE, 2 POSITION FUNCTIONS (01 & 08)		
		PRODUCT SPEC	-	-		
TOLERANCES UNLESS OTHERWISE SPECIFIED:		APPLICATION SPEC	-	SIZE A2	CAGE CODE 00779	DRAWING NO C=1825136
MATERIAL -		FINISH -	WEIGHT -	RESTRICTED TO -	SCALE 2:1	SHEET 3 of 4
		CUSTOMER DRAWING		REV A4		

LOC	DIST	REVISIONS			
AD	00	P	LTR	DESCRIPTION	DATE
					DWN
					APVD
				SEE SHEET 1	-
					-
					-

Alco P/N	P/N
A101K1V30B04	1825136-1
A101KAB04	1825136-2
A101KAQ04	1825136-3
A101P3YV30B04	1825136-4
A101KCQ04	1825136-5
A101KD9AQ04	1825136-6
A101KZQ04	1825136-7
A101SYAV2B04	1825136-8
A101L1D9V30Q04	1825136-9
A101L1YZB04	1-1825136-0
A101LDZQ04	1-1825136-1
A101MD9AB04	1-1825136-2
A101MD9AG04	1-1825136-3
A101MD9AQ04	1-1825136-4
A101MD9AV2B04	1-1825136-5
A101MD9AV2G04	1-1825136-6
A101MD9AV2Q04	1-1825136-7
A101MD9V30B04	1-1825136-8
A101MDAQ04	1-1825136-9
A101MDAV2B04	2-1825136-0
A101MDCG04	2-1825136-1
A101MDZQ04	2-1825136-2
A101MYCQ04	2-1825136-3
A101MYZQ04	2-1825136-4
A103SYAV2B04	2-1825136-5
A101P3CB04	2-1825136-6
A101P3ZQ04	2-1825136-7
A101KAV2Q04	2-1825136-8
not assigned	2-1825136-9
A101SCWCQ004	3-1825136-0
A101SCWZQ04	3-1825136-1
A101SD9AB04	3-1825136-2
A101SD9AQ04	3-1825136-3
A101SD9AV2B04	3-1825136-4
A101SD9AV2Q04	3-1825136-5
A101SD9V30B04	3-1825136-6
A101SD9V30Q04	3-1825136-7
A101SDCQ04	3-1825136-8
A101SDZQ04	3-1825136-9
A101SHZQ04	4-1825136-0
A101SY9CQ04	4-1825136-1
A101SYAB04	4-1825136-2
A101SYAQ04	4-1825136-3
A101SYCB04	4-1825136-4
A101SYCQ04	4-1825136-5
not assigned	4-1825136-6
A101SYWQ04	4-1825136-7
A101SYZB04	4-1825136-8

Alco P/N	P/N
A101SYZQ04	4-1825136-9
not assigned	5-1825136-0
not assigned	5-1825136-1
A101T1ZB04	5-1825136-2
A101T1ZQ04	5-1825136-3
A101TCQ04	5-1825136-4
A101TZQ04	5-1825136-5
A108MD9AB04	5-1825136-6
not assigned	5-1825136-7
A108P3CQ04	5-1825136-8
A108P3ZQ04	5-1825136-9
A108SD9AQ04	6-1825136-0
A108SDZQ04	6-1825136-1
A108SYCB04	6-1825136-2
A108SYCQ04	6-1825136-3
A108SYZQ04	6-1825136-4
not assigned	6-1825136-5
A101SYAG04	6-1825136-6



MATERIALS CHART		
COMPONENT NAME	BASE MATERIAL	FINISH
CASE	DAP, RED, UL94 V-0	
FRAME	STAINLESS STEEL	
B TERMINALS & CONTACTS	COPPER	GOLD OVER NICKEL
G TERMINALS & CONTACTS	COPPER	GOLD OVER SILVER
Q TERMINALS & CONTACTS	COPPER	.000400 SILVER
ACTUATOR	PHENOLIC, BLACK, UL94 V-1	
LEVER	BRASS	CHROME
BUSHING	BRASS	NICKEL
SPRING	MUSIC WIRE	
SUPPORT BRACKET	BRASS	TIN
PIVOT PIN	STEEL	NICKEL
LOCK WASHER	STAINLESS STEEL	
LOCKING RING	STAINLESS STEEL	
NUTS	C3604BD BRASS	NICKEL
TERMINAL SEAL	EPOXY	

THIS DRAWING IS A CONTROLLED DOCUMENT.

DWN
B.S.VISWESWARA

CHK
M.ZITTO

APVD
P.BROUILLETTE

PRODUCT SPEC

APPLICATION SPEC

WEIGHT

CUSTOMER DRAWING

14APR05

-

-

-

-

-

SCALE
3:1

SHEET
4 of 4

REV
A4

TE Connectivity

NAME

GEMINI A SERIES TOGGLE SWITCH, SINGLE POLE, 2 POSITION FUNCTIONS (01 & 08)

SIZE

CAGE CODE

DRAWING NO

RESTRICTED TO

A2

00779

C=1825136

-