



[My Cart](#) | [My Part Lists](#) | [Sign In/Register](#)

[English \(Change\)](#)

Have a Question?
Chat with a Product
Information Specialist

What can we help you find?

[Products](#) [Industries](#) [Resources](#) [About TE](#) [My Account](#) [Innovation](#) [Support Center](#)

MRC11004 Product Details



[Share](#)



[Print](#)



[Email](#)

Detailed product features are not currently available online.

Product features can often be found by referring to the available documents. [Contact us](#) for information about this product.

No Image Available

MRC11004 rotary switch



Always EU RoHS/ELV Compliant (Statement of Compliance)

Quick Links

- [Pricing & Availability](#)
- [Search for Tooling](#)
- [Contact Us About This Product](#)

MRC11004

TE Internal Number:

1825495-1



Active

[Add to My Part List](#)

[Buy Product](#)

Documentation & Additional Information

Product Drawings:

- [ROTARY SWITCH, WITH KNOB 1 POLE, 2-10 POSITIONS, ADJ...](#) (PDF, English)

Catalog Pages/Data Sheets:

- None Available

Product Specifications:

- None Available

Application Specifications:

- None Available

Instruction Sheets:

- None Available

CAD Files:

- None Available

[List all Documents](#)

Related Products:

- [Tooling](#)

Corporate Information

[About TE](#)
[Investors](#)
[News Room](#)
[Supplier Portal](#)
[Careers](#)
[Terms & Conditions](#)
[Privacy Policy](#)

Quick Links

[Distributor Inventory](#)
[Product Cross Reference](#)
[Documents & Drawings](#)
[Product Compliance Support Center](#)
[Site Map](#)

Customer Support

[Email or Chat With Us](#)
[Find a Phone Number](#)
[Knowledge Base](#)
[Manage Your Account](#)

Keep Me Informed



D

C

B

A

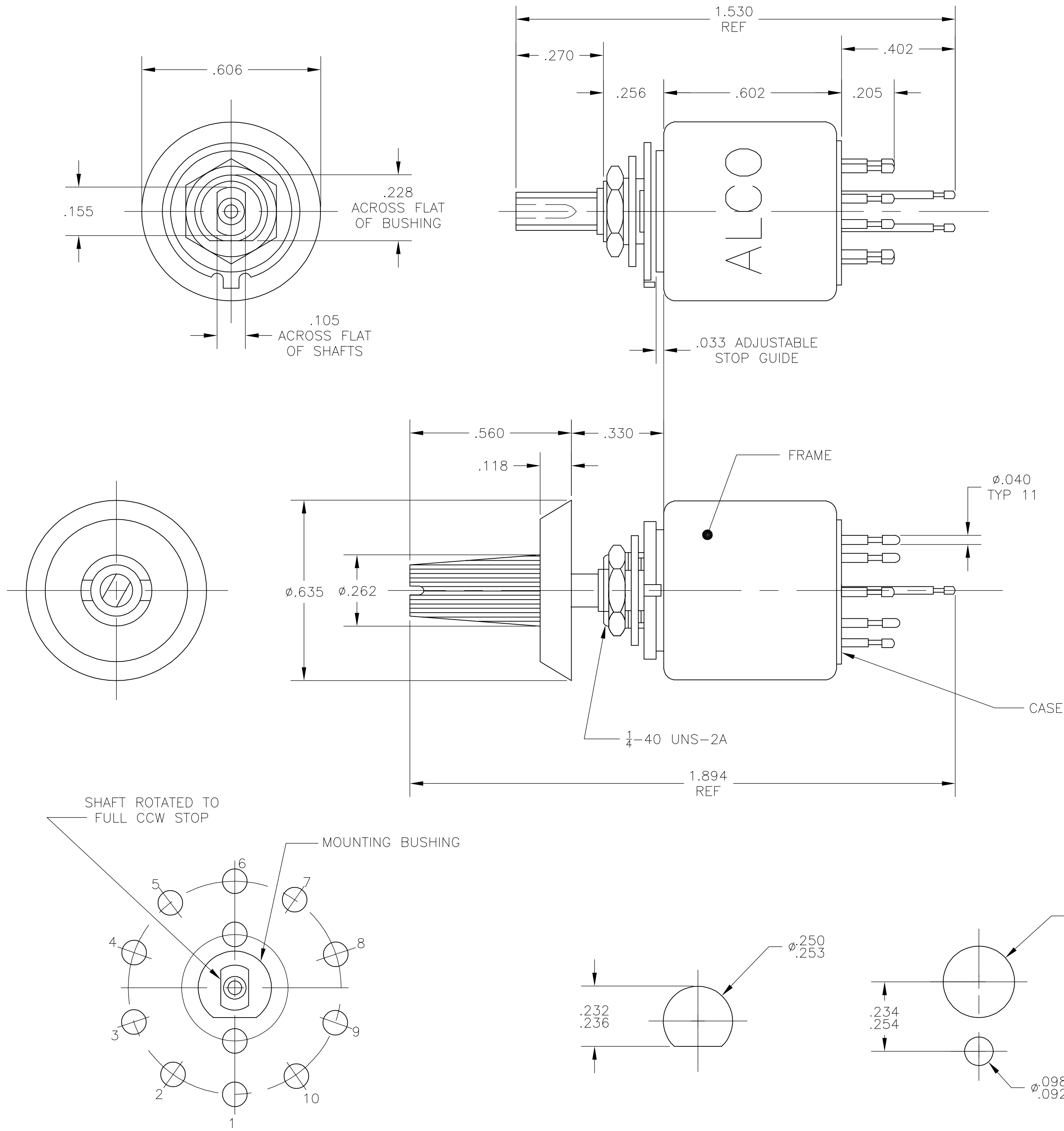
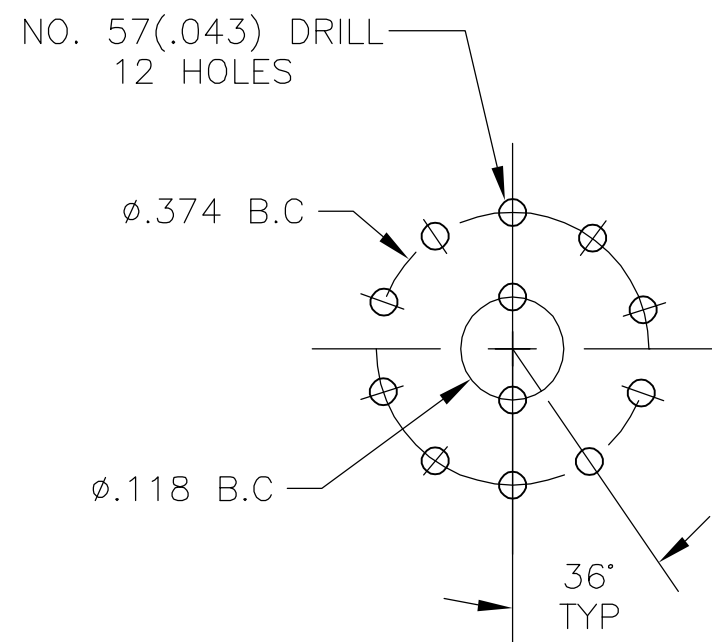
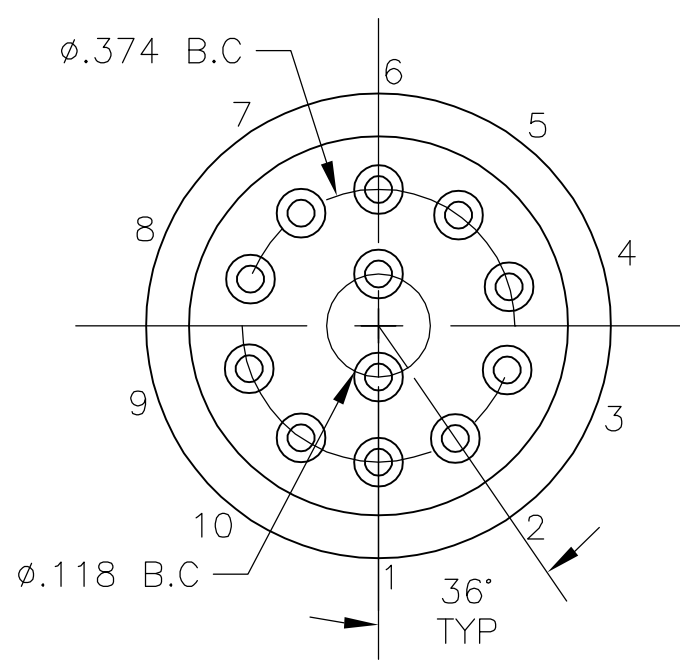


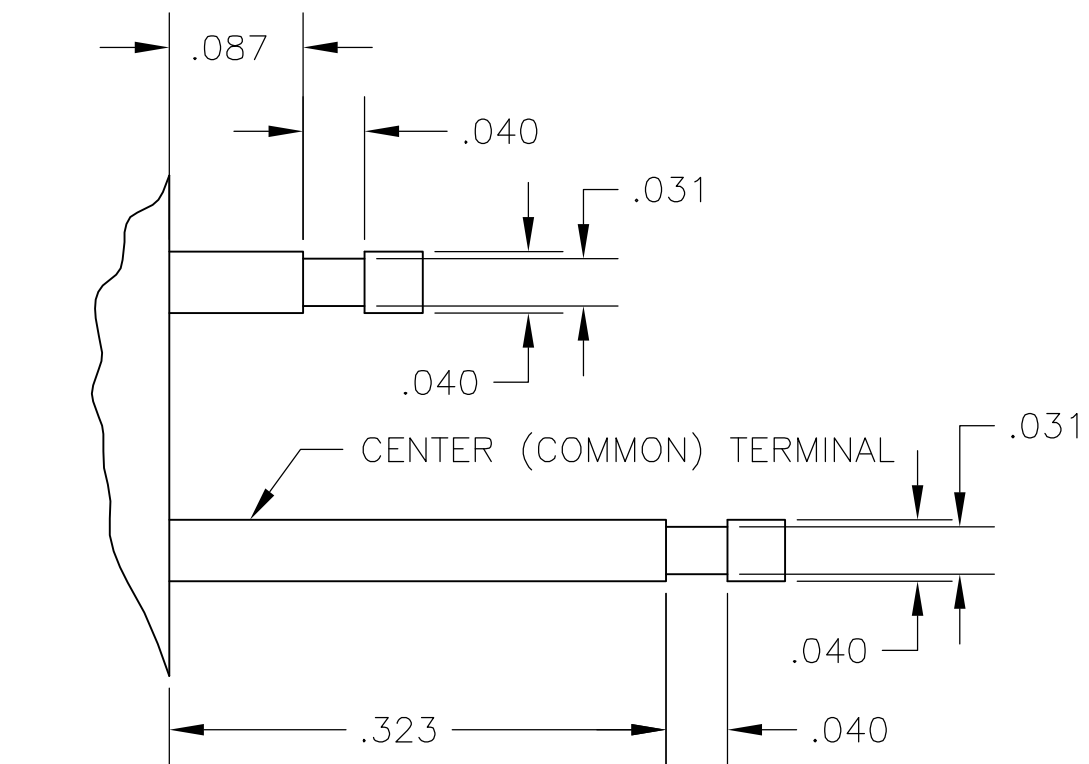
DIAGRAM LOOKING AT SHAFT END

RECOMMENDED PANEL CUTOUTS TO PREVENT ROTATION

SPECIFICATIONS	
RATING	.5A @ 125VAC OR 28VDC, RESISTIVE
INITIAL CONTACT RESISTANCE	10 milliohms MAX @ 1A, 2-4 VDC
INITIAL INSULATION RESISTANCE	100 megaohms min, TERMINAL TO TERMINAL, TERMINAL TO FRAME
INITIAL DIELECTRIC WITHSTANDING VOLTAGE	1000 VAC, (50-60HZ) FOR 1 min BETWEEN TERMINAL AND GROUND
DURABILITY	10,000 cycles min AT RATED CURRENT, 5-10 cycles per min
OPERATING FORCE	14 IN OZ MAX. TORQUE



P.C MOUNTING DIMENSIONS



TYPICAL TERMINAL DETAIL

NOTES:

- ALL MATERIALS AND FINISHES SHALL COMPLY WITH EU DIRECTIVE 2002/95/EC OF 27JAN2003(RoHS).
- CONTACT TIMING IS NON-SORTING.

MATERIALS		
COMPONENT NAME	BASE MATERIAL	FINISH
KNOB	PHENOL RESIN, BLACK, UL94HB	
ROTOR	BRASS	NICKEL
ROTOR	EVOH RESIN, NATURAL, UL94HB	
CASE	DAP, GREEN, UL94V-0	
ACTUATOR TIP	POLYAMIDE, NATURAL, UL94HB	
FRAME	ALLUMINIUM	
MOUNTING SLEEVE	ZINC ALLOY	ZINC
SHAFT	BRASS	NICKEL
SCREW	BRASS	NICKEL
SPRING	MUSIC WIRE	OIL TREATED
CONTACT SPRING	MUSIC WIRE	OIL TREATED
COMMON	SILVER	GOLD
STOP RING	SPRING STEEL	ZINC
STOPPER	STEEL	ZINC
HEX.NUT	BRASS	NICKEL
LOCATING RING	STEEL	ZINC
LOCK WASHER	STEEL	ZINC
MOVABLE CONTACT ARM	SILVER	GOLD
COMMON TERMINAL	BRASS	GOLD
CONTACTS	AgCuZn ALLOY	GOLD OVER NICKEL
STEEL BALL	STEEL	
LABEL	TETRON FILM	

MRC11004	1825495-1
ALCO P/N	TYCO P/N

THIS DRAWING IS A CONTROLLED DOCUMENT.		DWN B.S. VISWESWARA	22MAY06	Tyco Electronics Corporation Harrisburg, Pa 17105-3608	
DIMENSIONS: INCHES		CHK —	—	NAME —	
TOLERANCES UNLESS OTHERWISE SPECIFIED:		PRODUCT SPEC	—	APPLICATION SPEC	
0 PLC 1 PLC 2 PLC 3 PLC 4 PLC ANGLES		± .005 ± .005 ± .005 ± .005 ± .005 ± .005	—	SIZE —	
MATERIAL SEE TABLE		WEIGHT —	—	RESTRICTED TO —	
SEE TABLE		CUSTOMER DRAWING		SCALE 4:1 SHEET 1 OF 1 REV A	