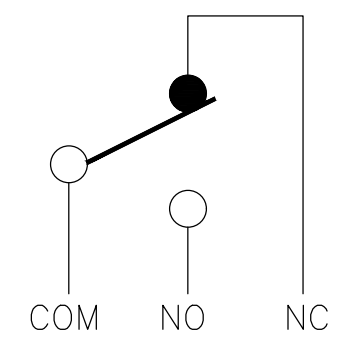
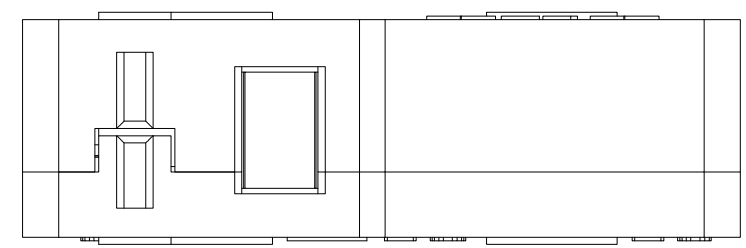
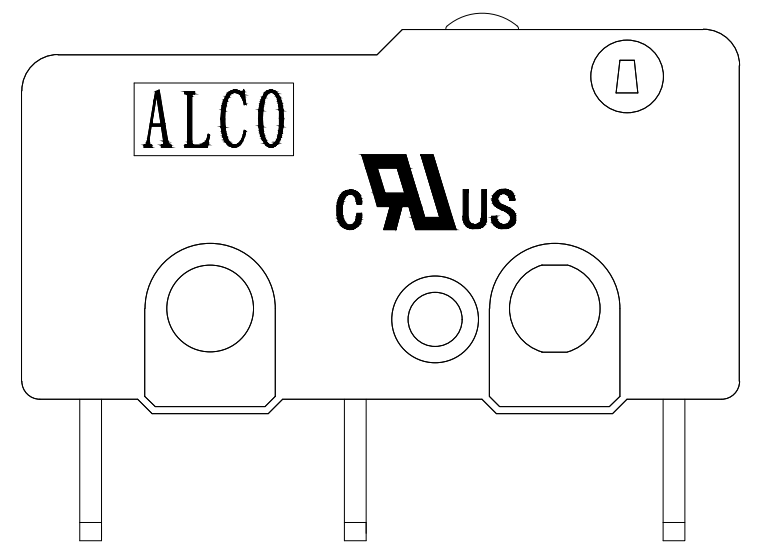
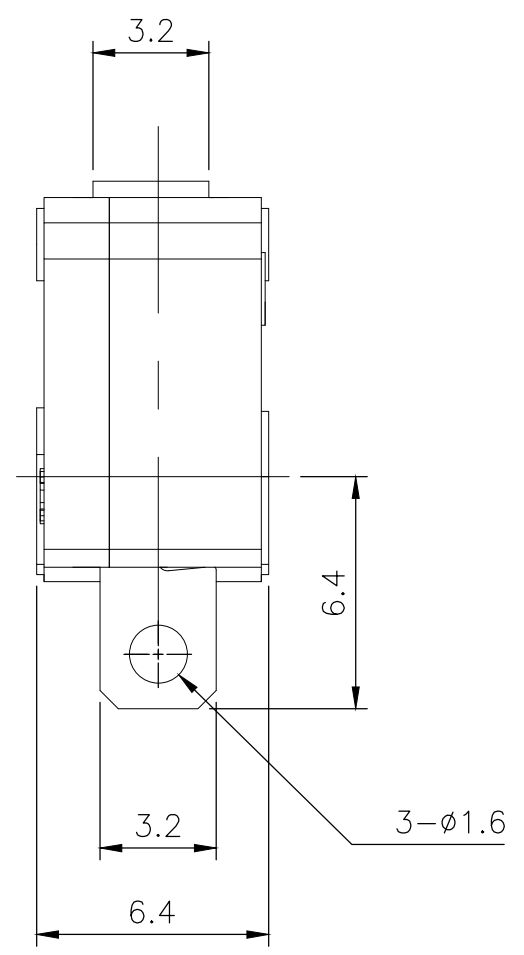
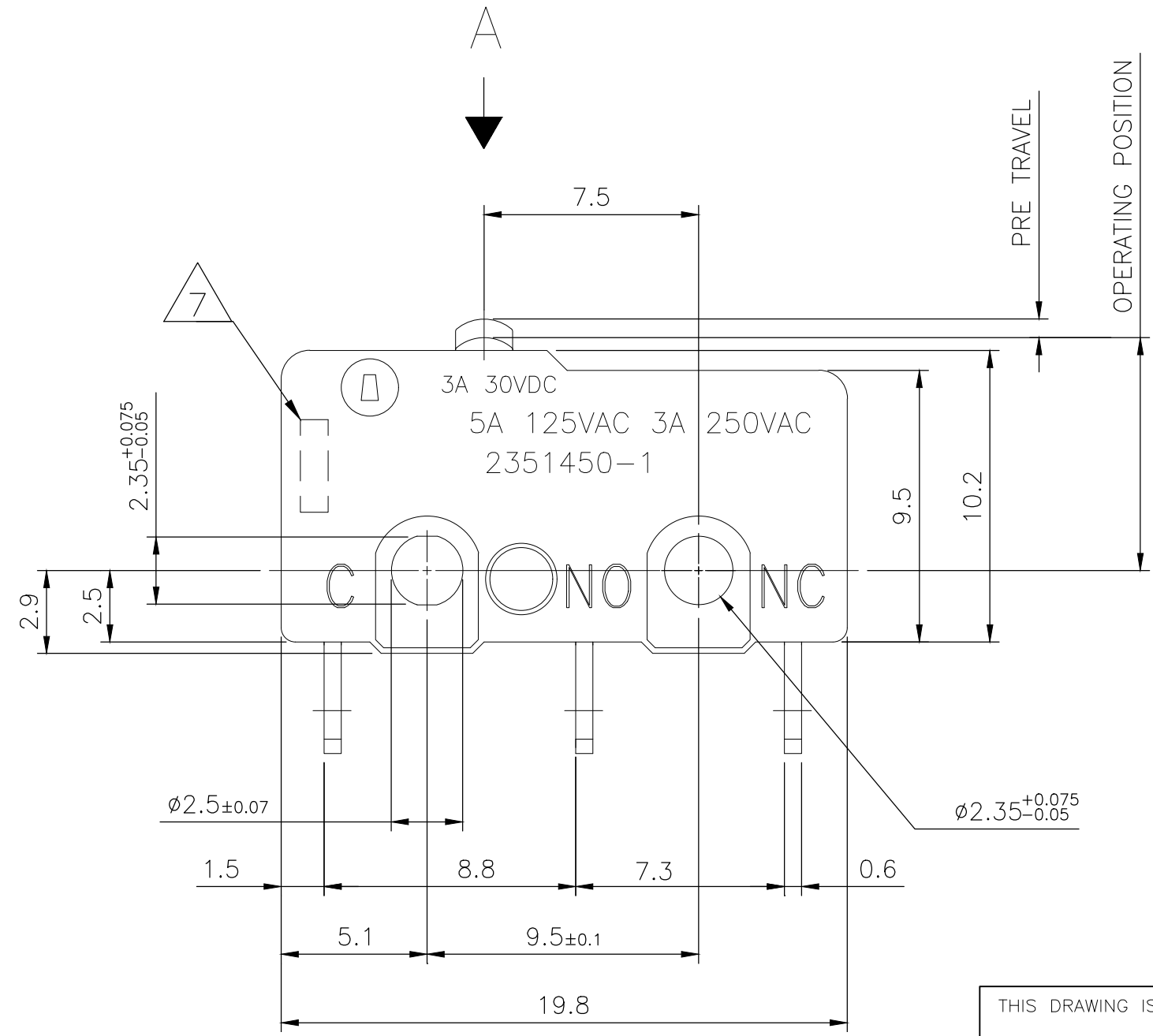


THIS DRAWING IS UNPUBLISHED. RELEASED FOR PUBLICATION  
 © COPYRIGHT - TE Connectivity Ltd. ALL RIGHTS RESERVED.

REVISIONS				
P	LTR	DESCRIPTION	DATE	APVD
2		DRAWING UPDATED	10JAN2020	DHC AS



CIRCUIT DIAGRAM




**PRELIMINARY**


THIS DRAWING IS A CONTROLLED DOCUMENT.		DWN	09MAY2019	<b>PRELIMINARY</b>	TE Connectivity Ltd.		
DIMENSIONS: mm		CHK	09MAY2019		NAME		
TOLERANCES UNLESS OTHERWISE SPECIFIED:		APVD	09MAY2019		SWITCH, SUBMINIATURE SNAP ACTION, PIN PLUNGER, SOLDER TERMINAL		
0 PLC ± - 1 PLC ± - 2 PLC ± 0.4 3 PLC ± - 4 PLC ± - ANGLES ± - MATERIAL - FINISH -		PRODUCT SPEC			RESTRICTED TO		
MATERIAL		APPLICATION SPEC		SIZE	CAGE CODE	DRAWING NO	
		WEIGHT		A3	00779	C=2351450	
CUSTOMER DRAWING				SCALE	SHEET	REV	
				NTS	1 OF 2	2	

THIS DRAWING IS UNPUBLISHED. RELEASED FOR PUBLICATION  
 © COPYRIGHT - TE Connectivity Ltd. ALL RIGHTS RESERVED.

REVISIONS					
P	LTR	DESCRIPTION	DATE	DWN	APVD
-	-	SEE SHEET 1	-	-	-

NOTES:

- OPERATING CHARACTERISTICS ARE FOR OPERATION IN THE A DIRECTION 
- PACKAGING:  
SWITCHES ARE BULK PACKAGED IN BAGS, 100 SWITCHES PER BAG, 10 BAGS PER BOX.
- COMPLIANCE:  
THE CURRENT STATEMENT OF COMPLIANCE IS AVAILABLE AT TE.COM.
- MATERIAL AND FINISH:  
BUTTON: THERMOPLASTIC, WHITE  
COVER: THERMOPLASTIC, BLACK  
SPRING PLATE: COPPER ALLOY  
MOVING PLATE: COPPER ALLOY  
CONTACTS: SILVER ALLOY  
RIVET: ALUMINUM  
TERMINAL: BRASS, SILVER PLATED  
BASE: THERMOPLASTIC, BLACK
- SPECIFICATIONS:  
CURRENT RATING: SEE TABLE  
CONTACT RESISTANCE: 50mΩ MAXIMUM INITIAL AT FREE POSITION AND TOTAL TRAVEL POSITION  
INSULATION RESISTANCE: 100MΩ MINIMUM @ 500 V DC FOR 1 MINUTE, INITIAL.  
DIELECTRIC WITHSTANDING VOLTAGE, BETWEEN TERMINALS OF THE SAME POLARITY: 1000 V AC, 50 TO 60 HZ FOR 1 MINUTE  
DIELECTRIC WITHSTANDING VOLTAGE, BETWEEN EACH TERMINAL AND GROUND: 1500 V AC, 50 TO 60 HZ FOR 1 MINUTE  
DIELECTRIC WITHSTANDING VOLTAGE, BETWEEN EACH TERMINAL AND NON-CURRENT CARRYING METAL PART: 1500 V AC, 50 TO 60 HZ FOR 1 MINUTE
- SOLDER PROCESS:  
MANUAL SOLDERING: 350°C, 3 SECONDS MAXIMUM, 30 TO 40 WATTS. PREVENT SOLDER AND FLUX CONTACTING THE SWITCH BODY.  
DO NOT OPERATE THE SWITCH DURING THE FIRST MINUTE AFTER SOLDERING.  
WAVE SOLDERING: 260°C, 5 SECONDS MAXIMUM. PREVENT SOLDER AND FLUX CONTACTING THE SWITCH BODY.  
DO NOT OPERATE THE SWITCH DURING THE FIRST MINUTE AFTER SOLDERING.

 DATE CODE:        
 ① ② ③ ④


①	DAY	01 TO 31
②	MONTH	1 TO 9, X, Y, Z (X=10, Y=11, Z=12)
③	YEAR	00 TO 99
④	OTHER	N/A

8. CERTIFICATION: 

SILVER	SPDT	10,000,000 CYCLES, MINIMUM	100,000 CYCLES, MINIMUM	-40 TO +85°C/85% RELATIVE HUMIDITY MAXIMUM	-40 TO +105°C/60% RELATIVE HUMIDITY MAXIMUM	0.10 MAXIMUM	0.50 MINIMUM	8.4±0.5	0.50 MAXIMUM	0.25N MINIMUM	1.47N MAXIMUM	5A, 125VAC 3A, 250VAC 3A, 30VDC	MOMENTARY	SOLDER	SAJ25YXPP0147SDTSEQ	2351450-1
CONTACT FINISH	CONTACT FORM	MECHANICAL LIFE	ELECTRICAL LIFE	STORAGE TEMPERATURE RANGE/HUMIDITY RANGE	OPERATING TEMPERATURE RANGE/HUMIDITY RANGE	MOVEMENT DIFFERENTIAL	OVERTRAVEL	OPERATING POSITION	PRETRAVEL	RELEASE FORCE	OPERATING FORCE	RATING, RESISTIVE LOAD	CONTACT CONFIGURATION	TERMINAL TYPE	TE SMART PART NUMBER	PART NUMBER

**PRELIMINARY**

THIS DRAWING IS A CONTROLLED DOCUMENT.

DWN	09MAY2019	 TE Connectivity Ltd.	
CHK	09MAY2019		
APVD	09MAY2019		
PRODUCT SPEC			
NAME		SWITCH, SUBMINIATURE SNAP ACTION, PIN PLUNGER, SOLDER TERMINAL	
ALEXANDER SHARPE			
APPLICATION SPEC			
SIZE	CAGE CODE	DRAWING NO	RESTRICTED TO
A3	00779	C=2351450	-
CUSTOMER DRAWING		SCALE	SHEET
		NTS	2 of 2
			REV 2