

LMX2541-xxxx Evaluation Board

User's Guide



September 2004
Literature Number SNAU067A
Revised – January 2014



LMX2541xxxx

Ultra Low Noise PLLatinum™ Frequency Synthesizer with Integrated VCO
Evaluation Board Operating Instructions

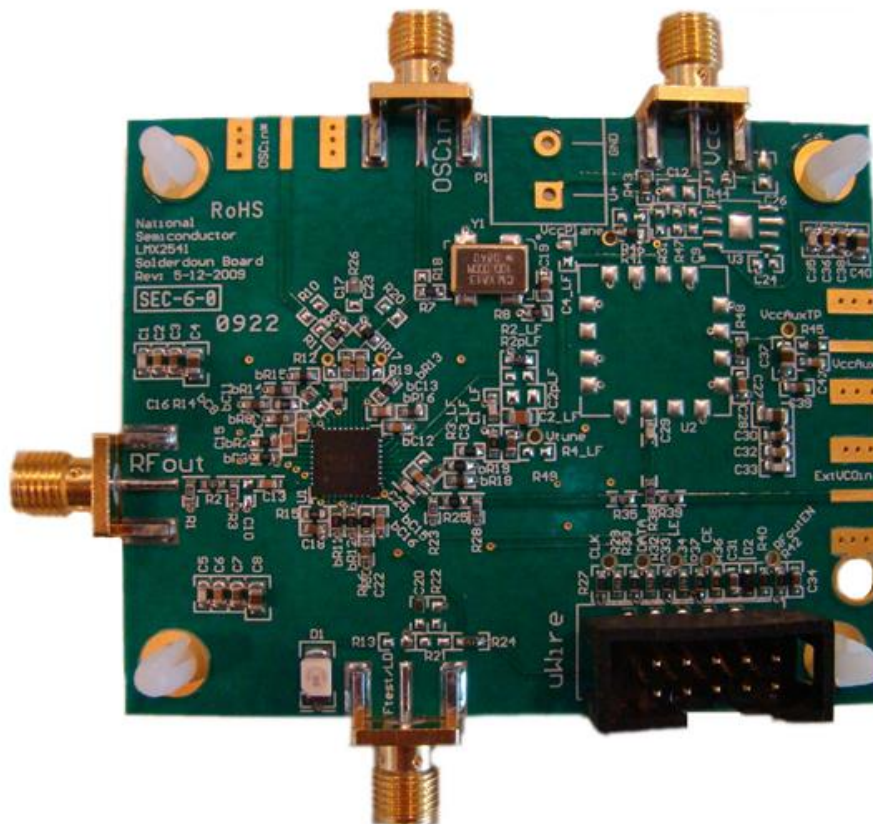


TABLE OF CONTENTS

EQUIPMENT	ERROR! BOOKMARK NOT DEFINED.
BASIC OPERATION.....	5
LMX2541XXXX BOARD INFORMATION	7
APPENDIX A: BOARD STACKUP LAYERS	14
APPENDIX B: BILL OF MATERIALS.....	ERROR! BOOKMARK NOT DEFINED.15
APPENDIX C: SCHEMATICS.....	ERROR! BOOKMARK NOT DEFINED.16
APPENDIX D: ASSEMBLY DIAGRAM.....	ERROR! BOOKMARK NOT DEFINED.17
APPENDIX E: QUICK START ON EVM COMMUNICATION .	ERROR! BOOKMARK NOT DEFINED.22

Equipment

Power Supply

The Power Supply should be a low noise power supply. An Agilent 6623A Triple power supply with LC filters on the output to reduce noise was used in creating these evaluation board instructions.

Signal Generator

The Signal Generator should be capable of frequencies and power level required for the part. A Rohde & Schwarz SML03 was used in creating these evaluation board instructions.

Phase Noise / Spectrum Analyzer

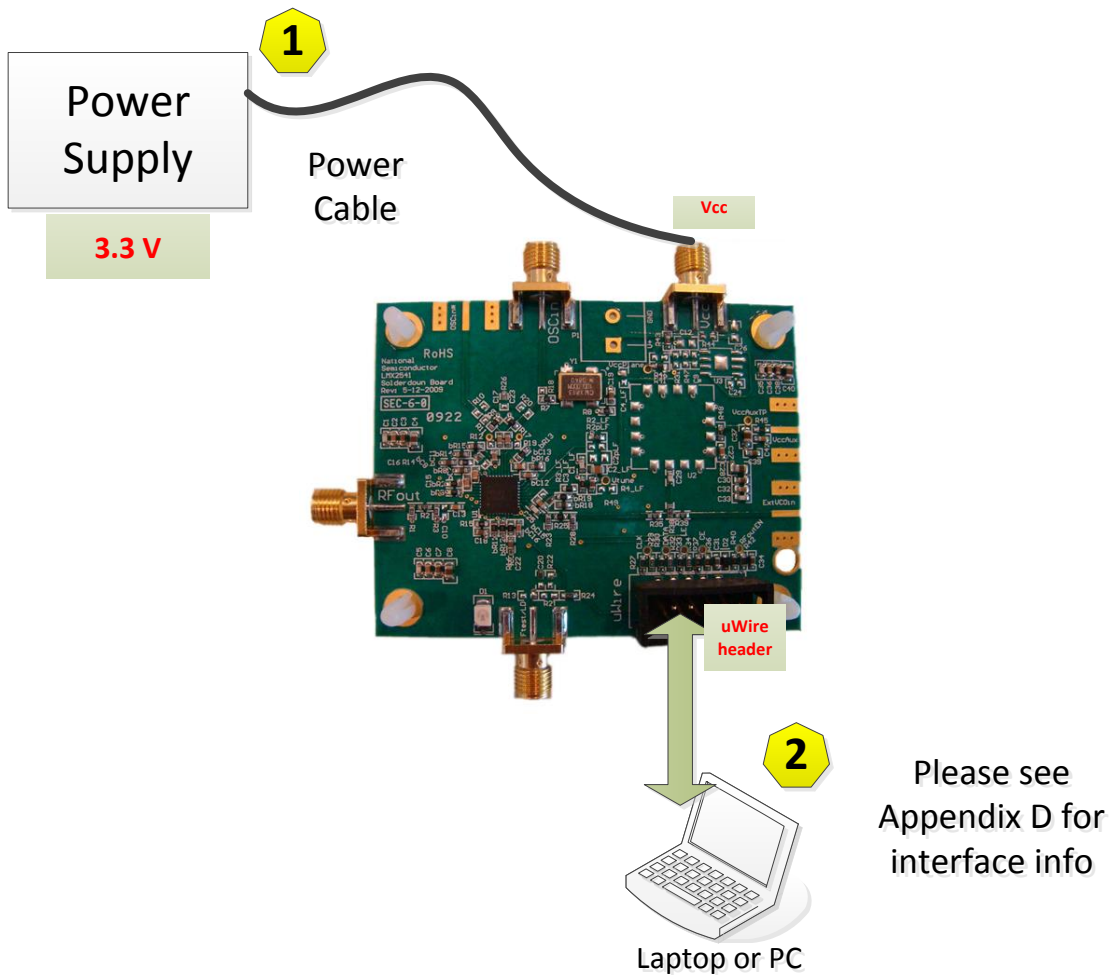
For measuring phase noise an Agilent E5052A is recommended. An Agilent E4445A PSA Spectrum Analyzer with the Phase Noise option is also usable although the architecture of the E5052A is superior for phase noise measurements. At frequencies less than 100 MHz the local oscillator noise of the PSA is too high and measurements will be of the local oscillator, not the device under test.

Oscilloscope

The oscilloscope and probes should be capable of measuring the output frequencies of interest when evaluating this board. The Agilent Infiniium DSO81204A was used in creating these evaluation board instructions.

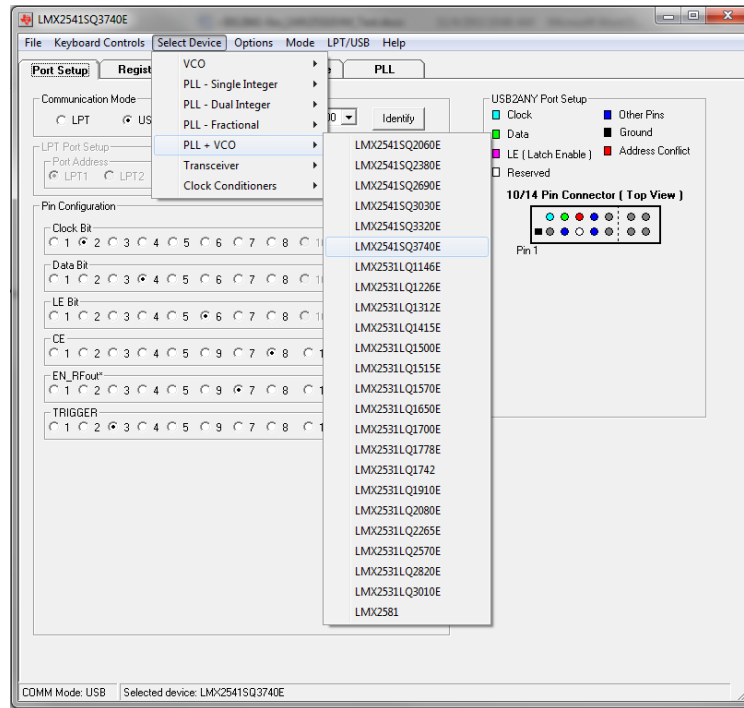
Basic Operation

1. Connect a low noise **3.3 V** power supply to the **Vcc** connector located at the top left of the board.
2. Please see **Appendix D** for quick start on interfacing the board. Connect PC to the **uWire** header.

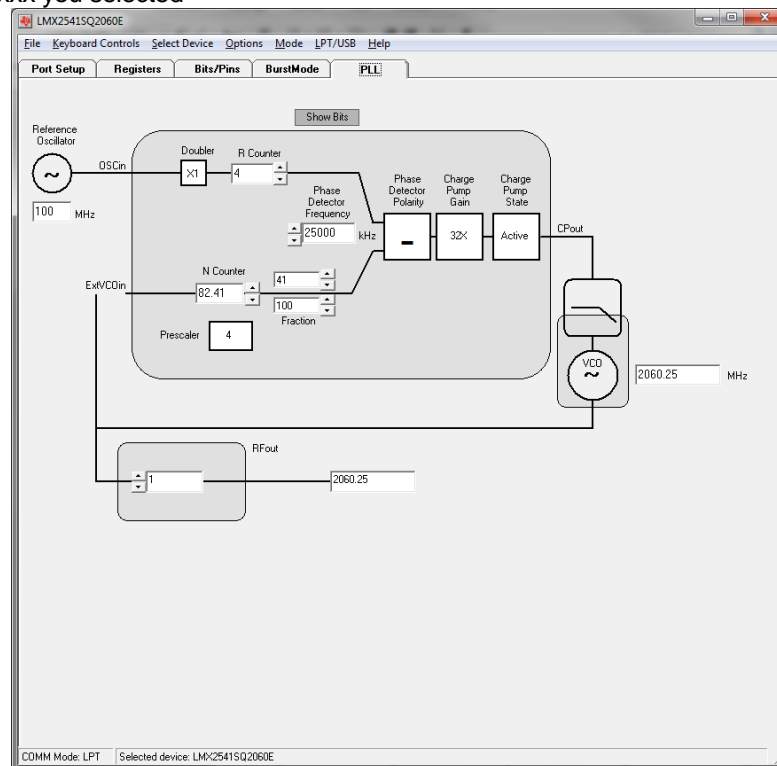


3. Start CodeLoader4.exe.
4. Select USB or LPT Communication Mode on the Port Setup tab as appropriate.

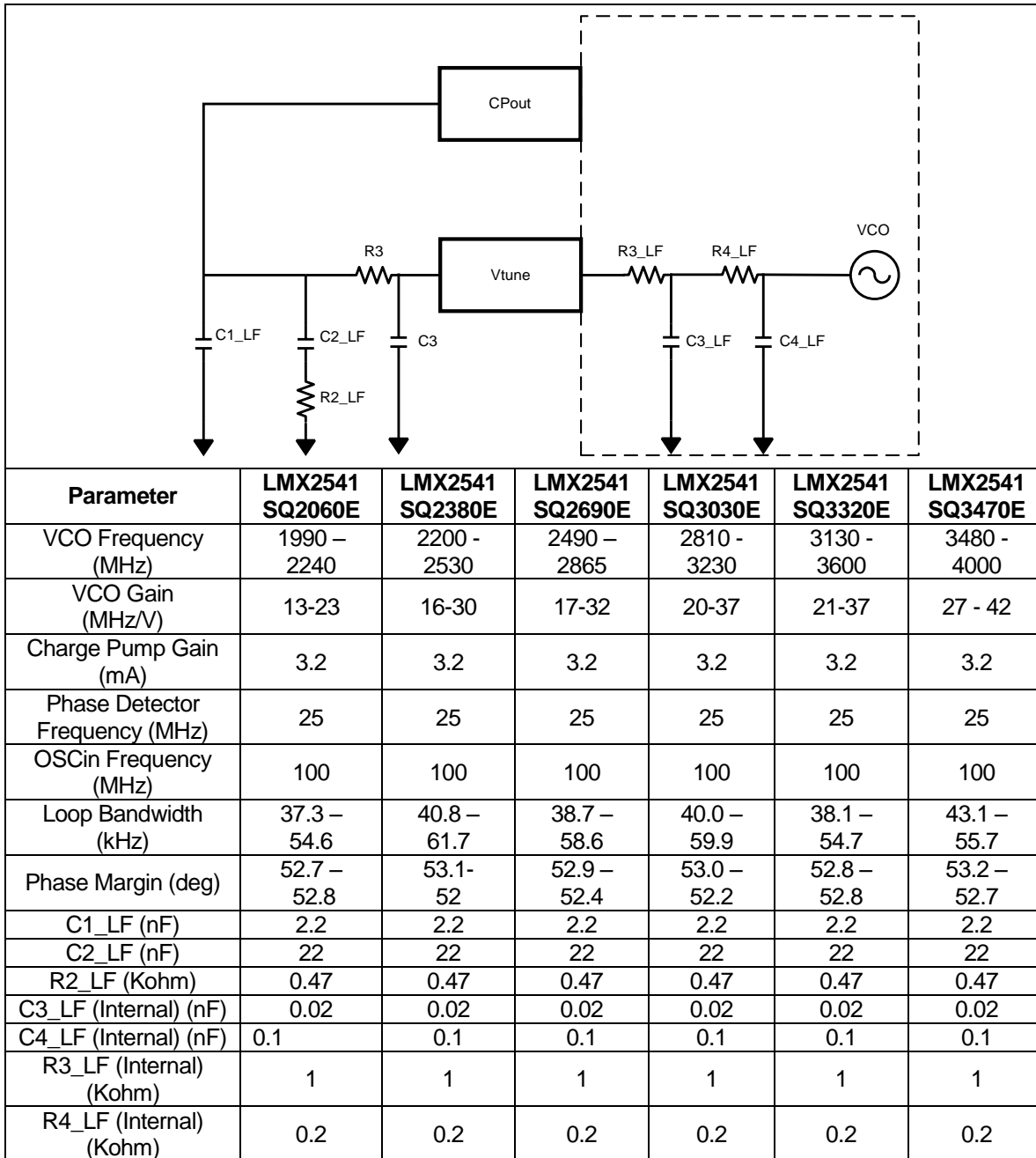
- Click "Select Device" → "PLL-VCO" → LMX2531xxxx depending on which chip is on your board.



- Check your window with "PLL/VCO" Tab screenshot, 100 MHz input, but VCO output will be different depending on which LMX2541xxxx you selected

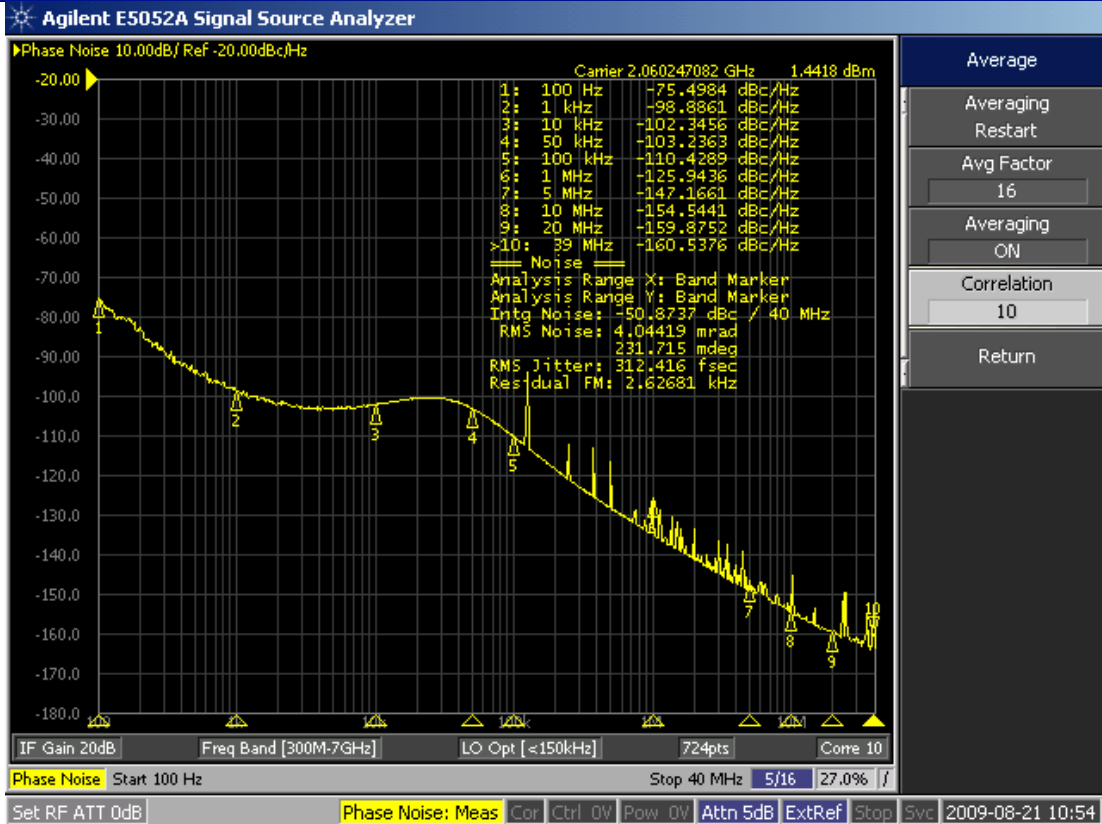
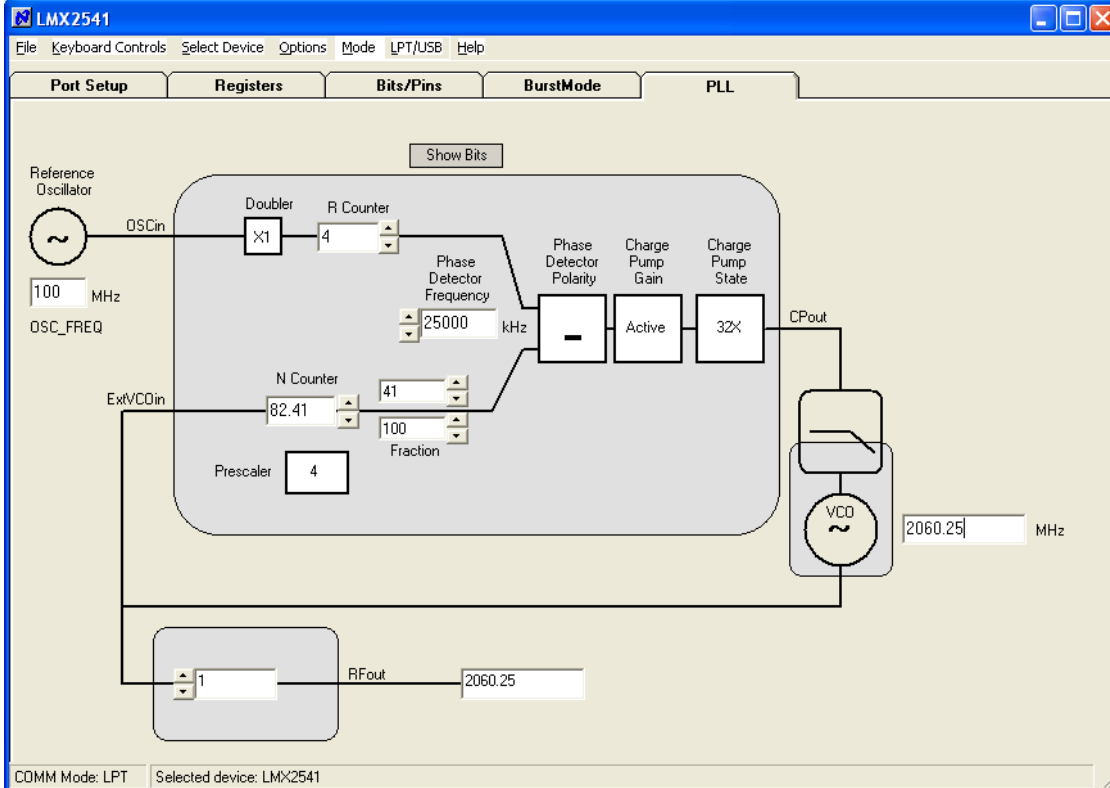


LMX2541-xxxx Board Information

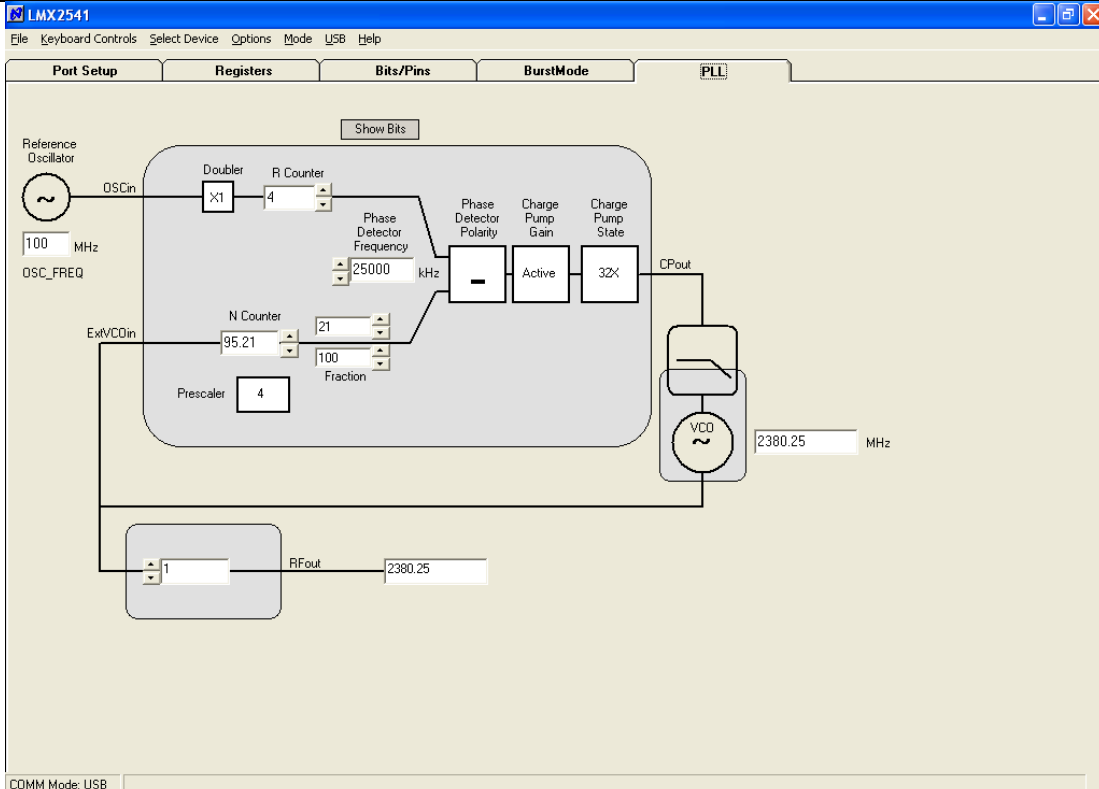


* Note that the VCO gain does change a fair amount. Although not demonstrated in these instructions, the charge pump gain could be adjusted to account for this variation.

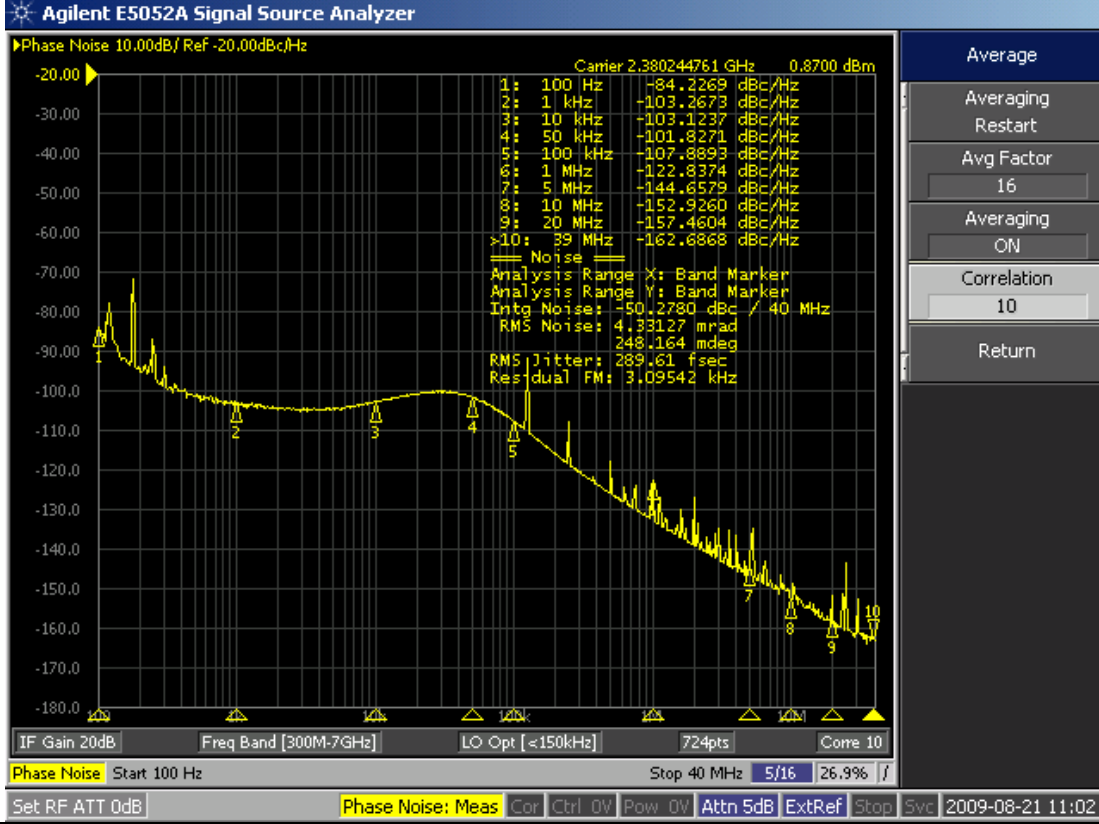
LMX2541SQ2060E Setup and Measured Performance



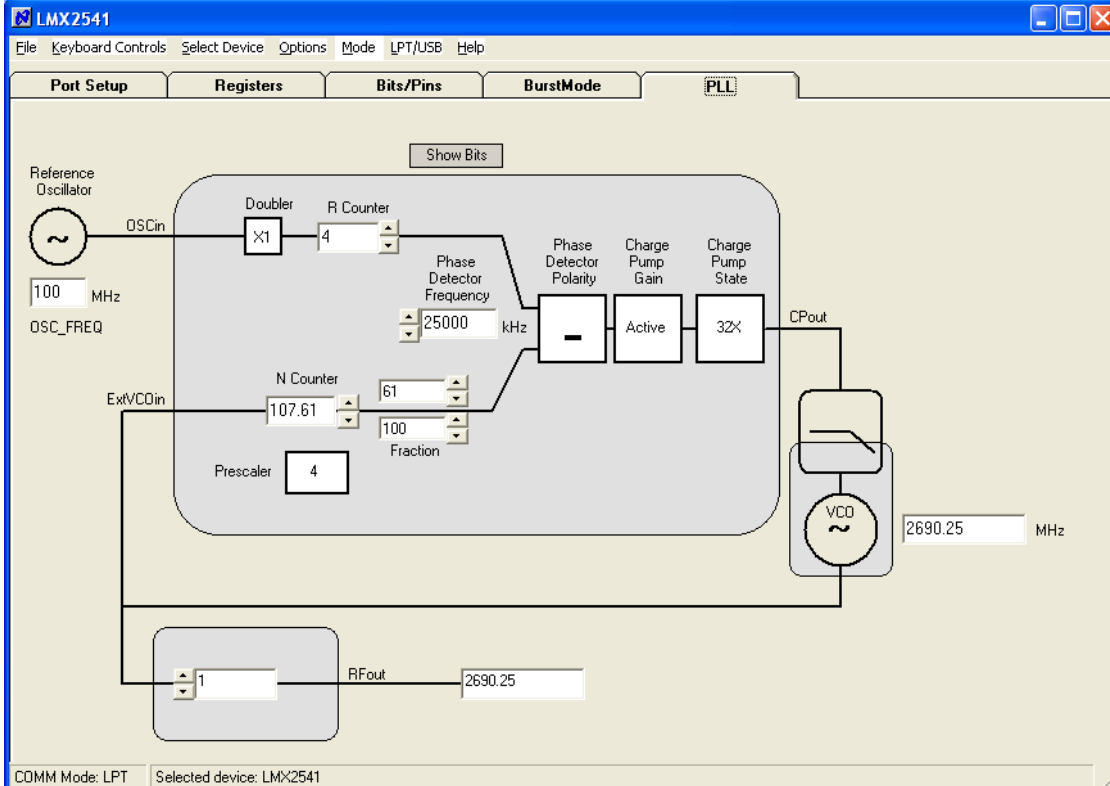
LMX2541SQ2380E Setup and Measured Results



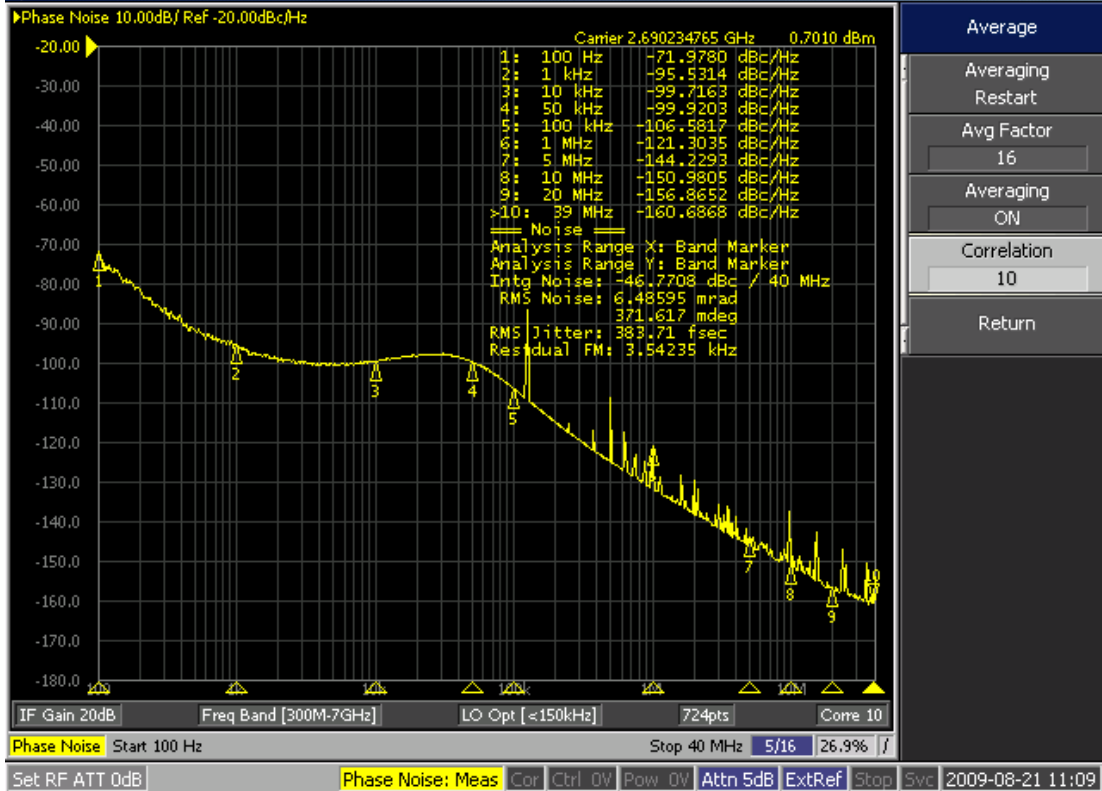
COMM Mode: USB



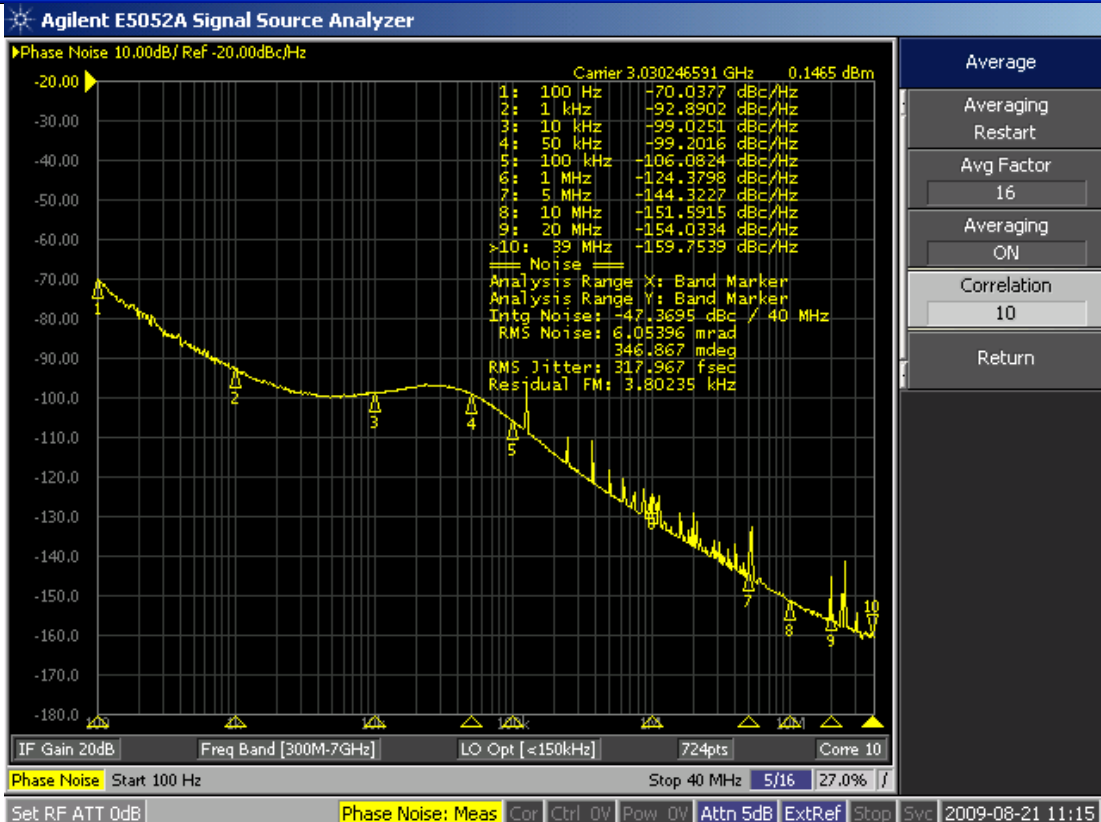
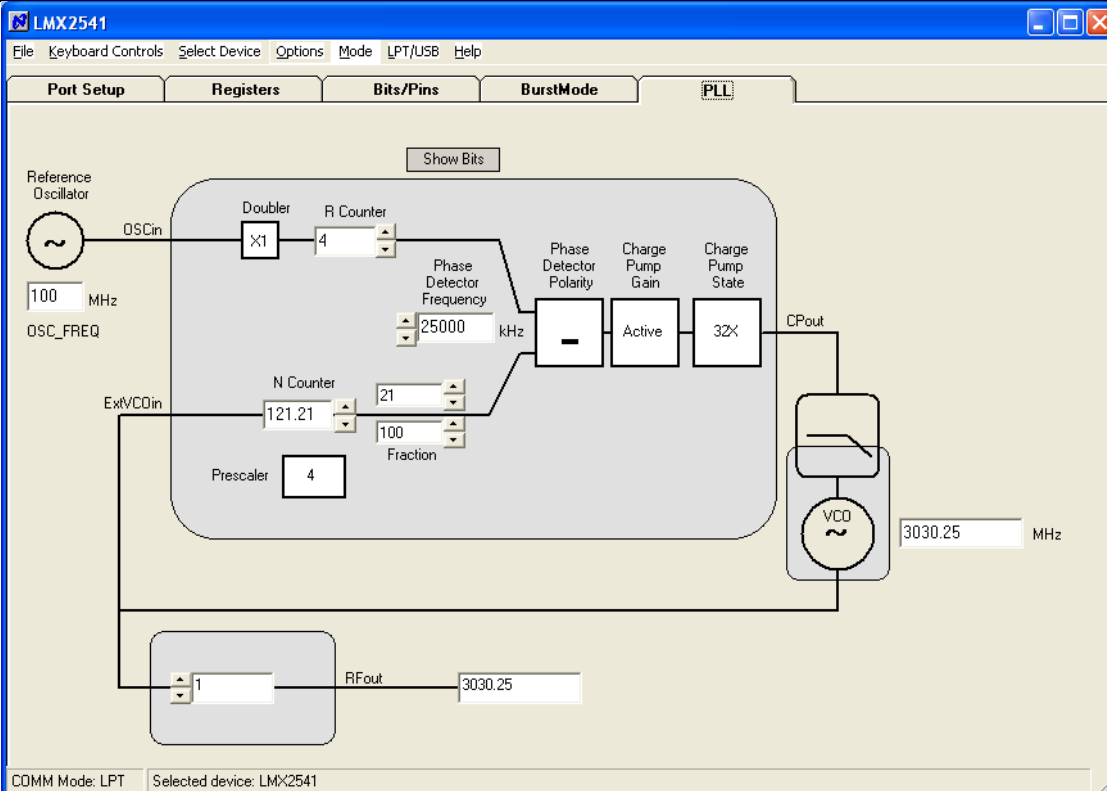
LMX2541SQ2690E Setup and Measured Results



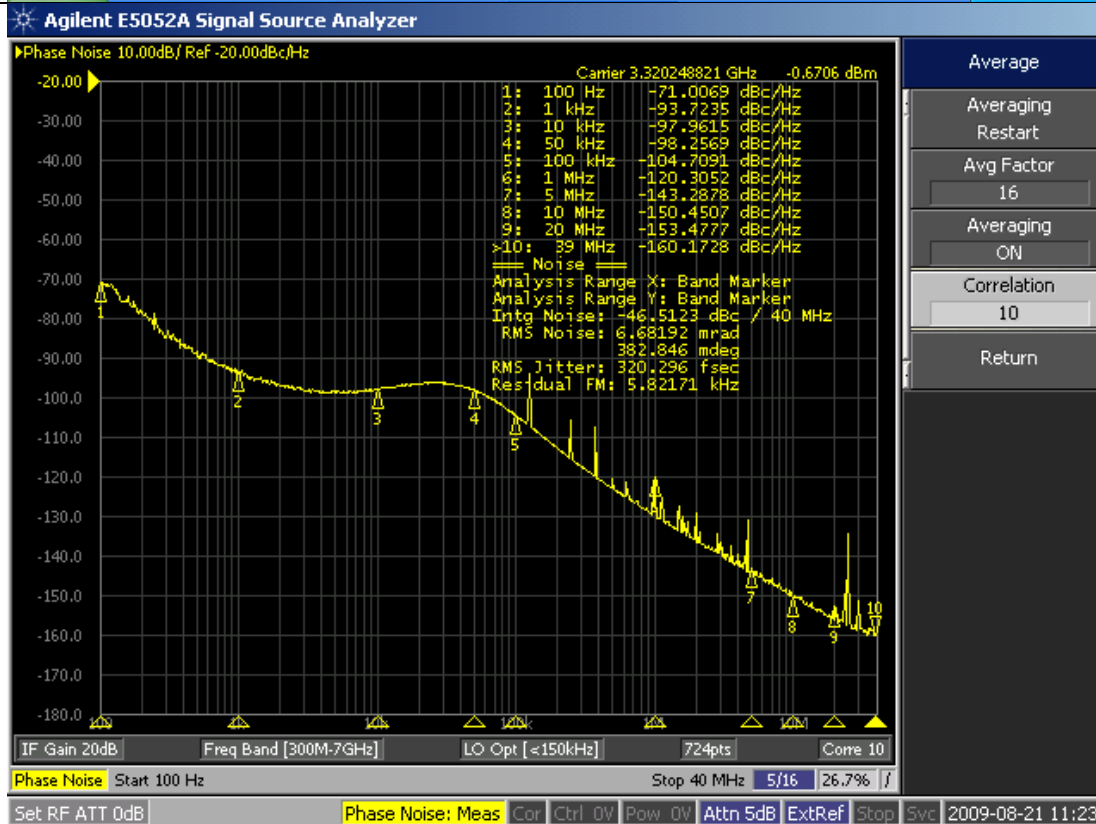
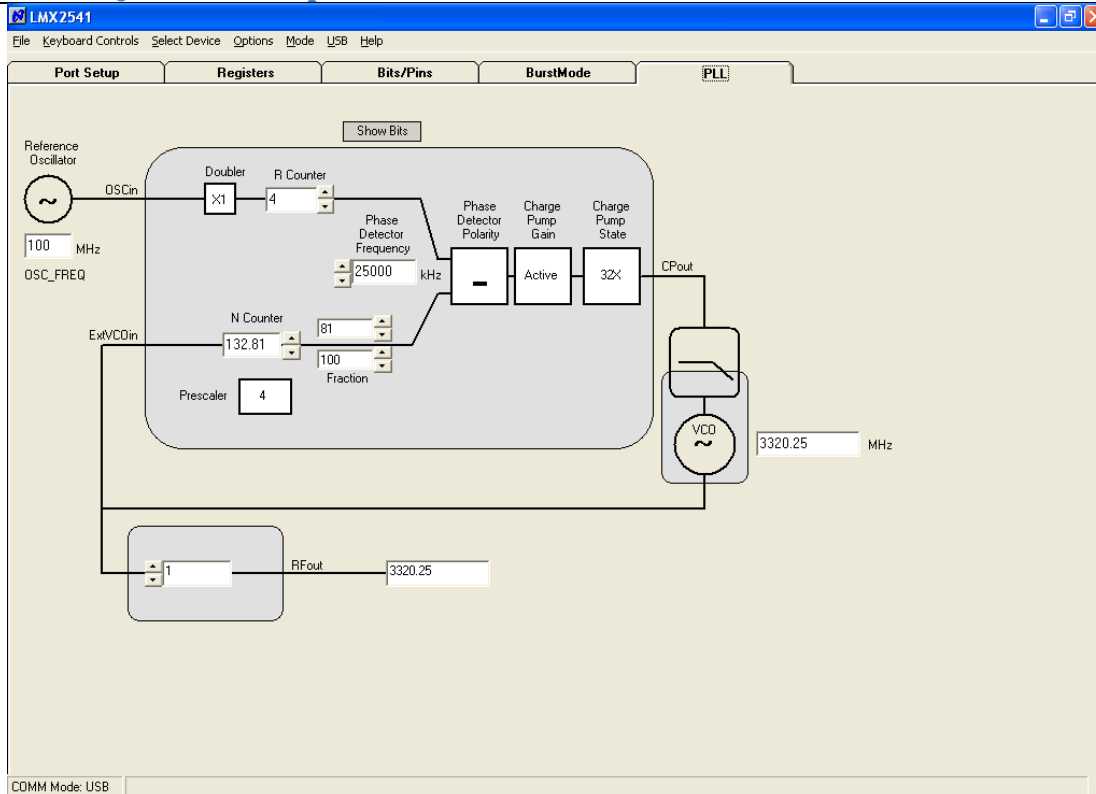
Agilent E5052A Signal Source Analyzer



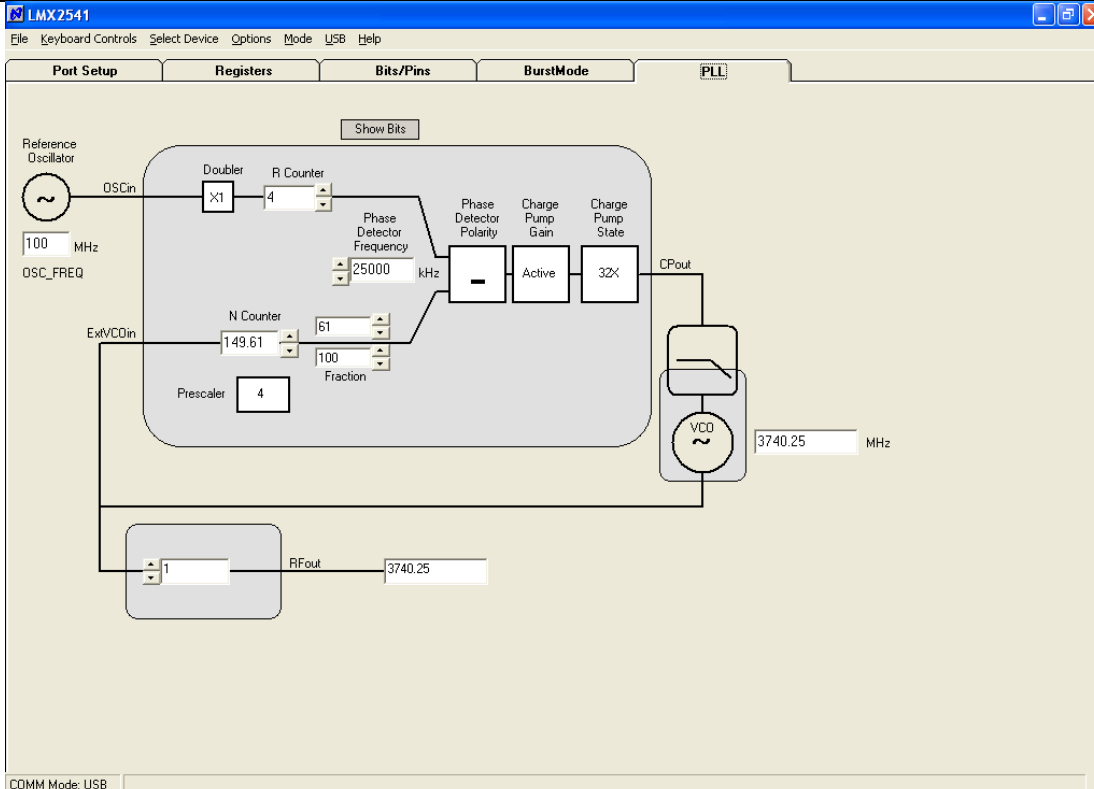
LMX2541SQ3030E Setup and Measured Results



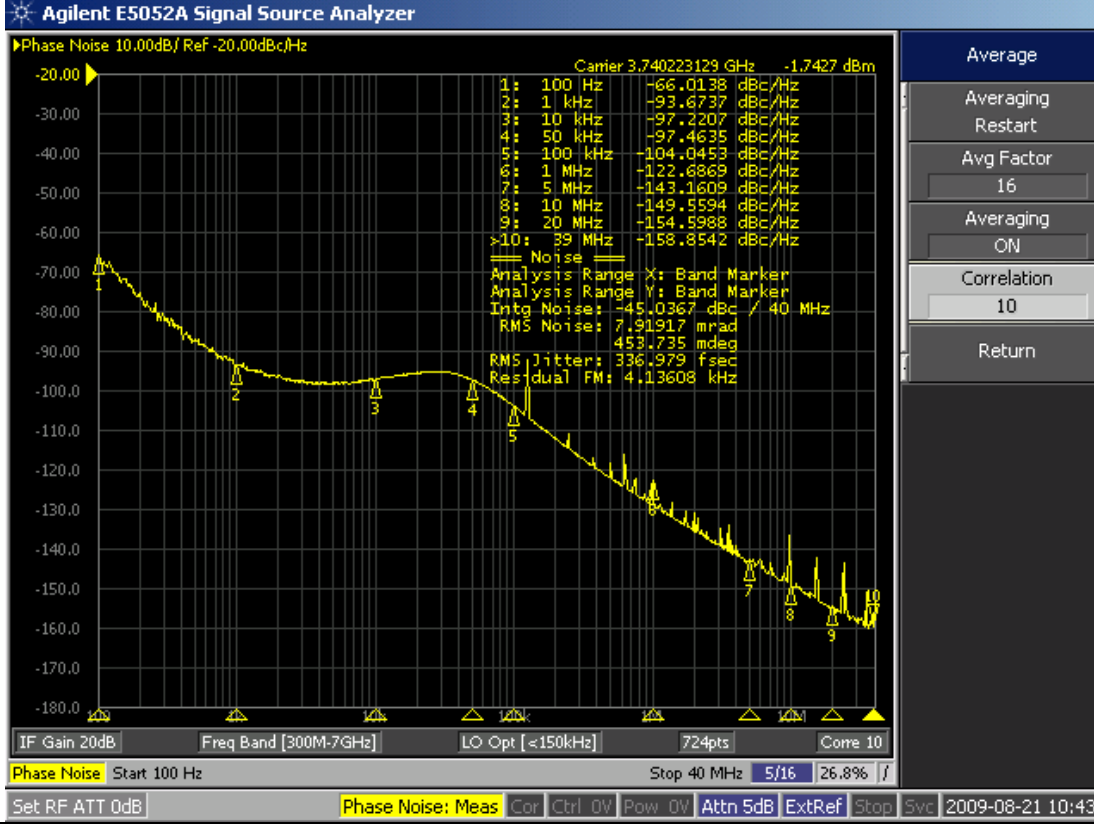
LMX2541SQ3320E Setup and Measured Results



LMX2541SQ3740E Setup and Measured Results



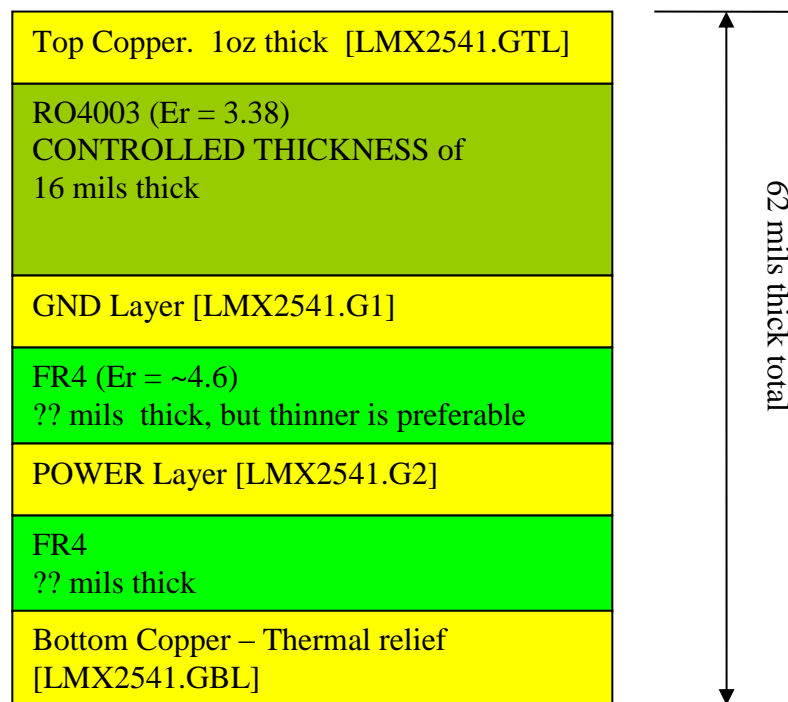
COMM Mode: USB



Appendix A: Board Stackup Layers

Board Material	Rogers RO4003 (Top Layer to Ground Plane (.G1)) Remaining layers - FR4
Number of Layers	4
Board Thickness	0.062"
Copper Weight	1 oz Finished
Finish	Immersion Gold
Solder Mask Color	Green/Gloss
Testing	100% Electrical Testing

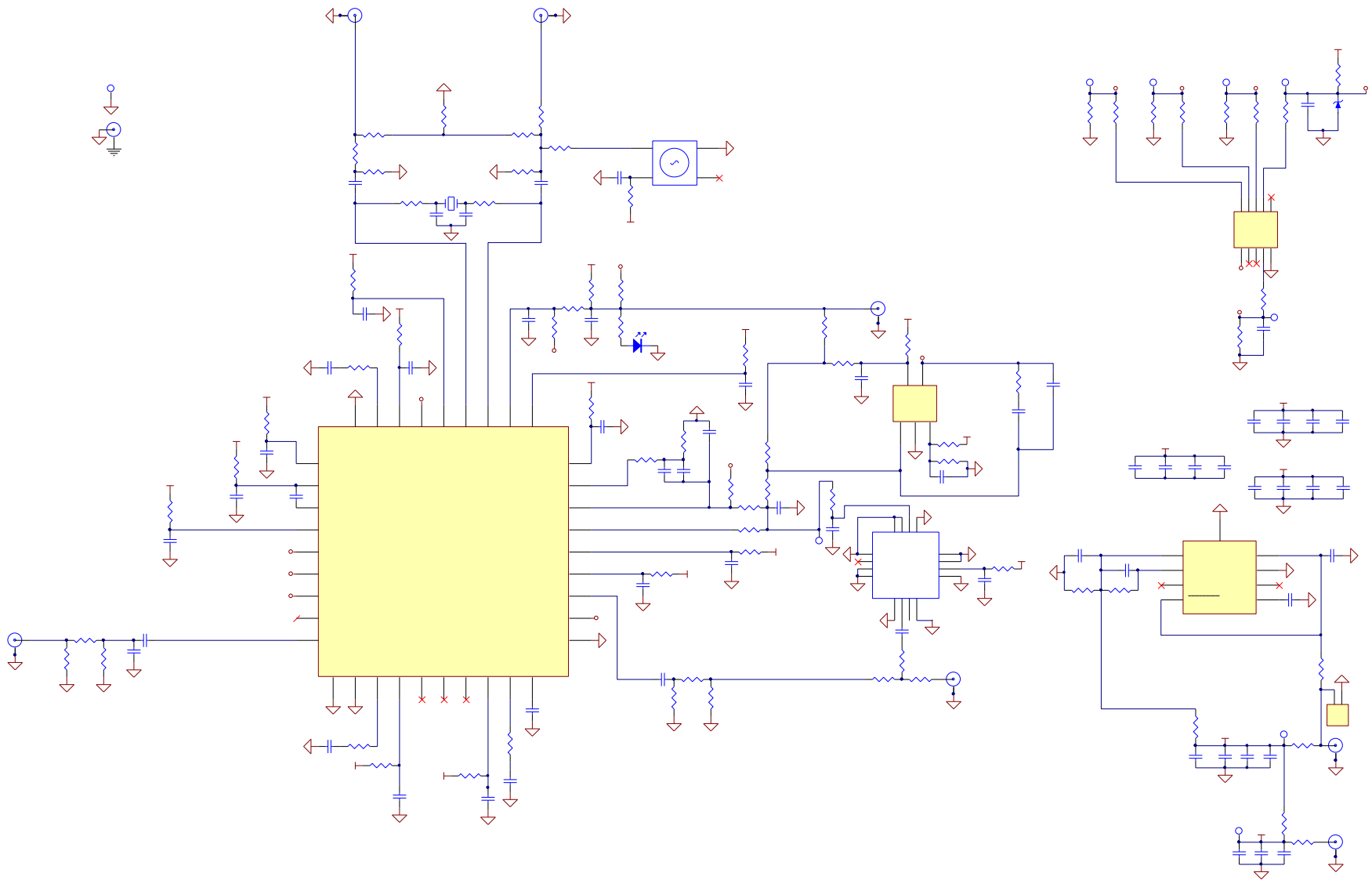
Name	K	Tand
RO4003 (16 mil)	3.38	0.0022



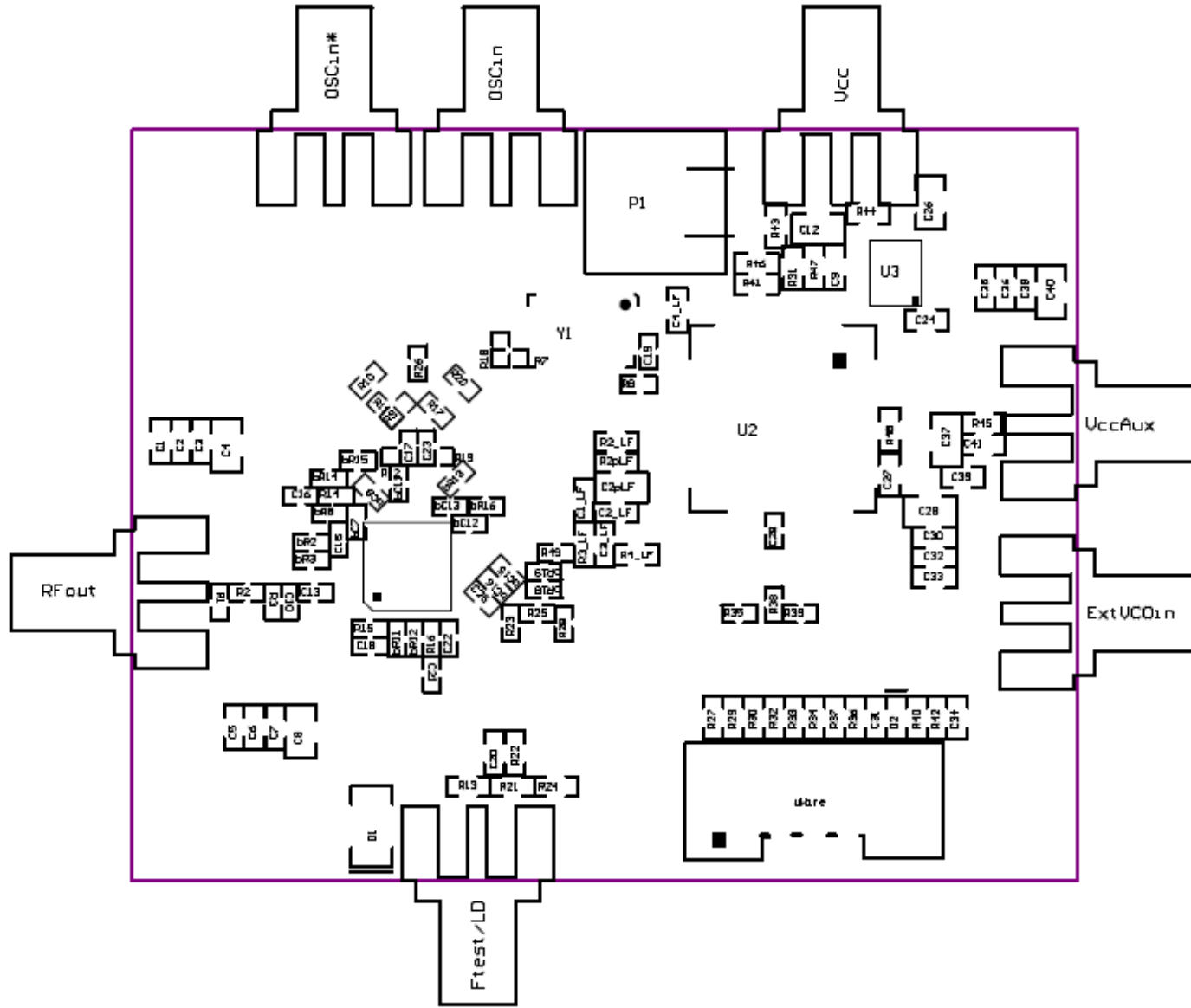
Appendix B: Bill of Materials

Version	7-27-2009			
Qty	Part	Manufacturer	Part Number	Identifier
Capacitors				
4	100 pF	Kemet	C0603C101J5GAC	C1, C5, C33, C35
1	2.2 nF	Kemet	C0603C222J5GAC	C3_LF
1	22 nF	Kemet	C0603C223K5RAC	C2_LF
16	0.1 uF	Kemet	C0603C104K5RAC	bC7, bC12, bC13, bC15, bC16, C13, C15, C17, C22, C23 C2, C6, C27, C32, C36, C41
10	1 uF	Kemet	C0603C105K8VAC	C3, C7, C16, C18, C19, C30, C31, C34, C38, C39
1	4.7 uF	Kemet	C0603C475K9PAC	C21
5	10 uF	Kemet	C0805C106K9PAC	C4, C8, C28, C37, C40
Resistors				
10	0 ohm	Vishay/Dale	CRCW06030000Z0EA	bR2, bR3, bR11, bR12, R49, R3_LF, R21, R41, R43, R45
2	4.7 ohm	Vishay/Dale	CRCW06034R7JNEA	R14, R16, R48
2	10 ohm	Vishay/Dale	CRCW060310R0JNEA	R8, R15
1	18 ohm	Vishay/Dale	CRCW060318R0JNEA	R2
3	51 ohm	Vishay/Dale	CRCW060351R0JNEA	R7, R9, R17
1	180 ohm	Vishay/Dale	CRCW0603180R0JNEA	R36
2	330 ohm	Vishay/Dale	CRCW0603330R0JNEA	R1, R3
1	470 ohm	Vishay/Dale	CRCW0603470R0JNEA	R2_LF
1	2.2 k	Vishay/Dale	CRCW06032K20JNEA	R37
3	15 k	Vishay/Dale	CRCW060315K0JNEA	R29, R32, R34
5	27 k	Vishay/Dale	CRCW060327K0JNEA	R27, R30, R33, R40, R42
Other				
7	Ferrite	Digikey	490-1015-1-ND	bR8, bR13, bR14, bR15, bR16, bR18, bR19
1	3.3 V zener	Comchip	CZRU52C3V3	D2
1	HEADER_2X5(POLARIZED)	FCI Electronics	52601-S10-8	uWire
1	Green LED	Lumex	SML-LX2832GC-TR	D1
5	SMA	Johnson Components	142-0701-851	Ftest/LD, OSCin, OSCin*, RFout, Vcc
1	TCXO	Connor-Winfield	CWX813	Y1
1	LMX2541	National Semiconductor	LMX2541	U1
Open				
36	Open	-	Open	bC1, bC2, bC3, bC5, bC6, bC9, bC10, bC14, bC17, bC18, bR1, bR4, bR5, bR6, bR7, bR9, bR10, bR17, bR20, bR21, C1_LF, C4_LF, C9, C20, C24, R2pLF, R4_LF, R22, R24, R31, R44, R46, R47, C2pLF, C12, C26
20	Open	-	Open	bC4, bC8, bC11, C10, C25, C29, R10, R11, R12, R13, R18, R19, R20, R23, R25, R26, R28, R35, R38, R39
7	Open	-	Open	U2, U3, bU1, bY1, ExtVCOin, VccAux, P1

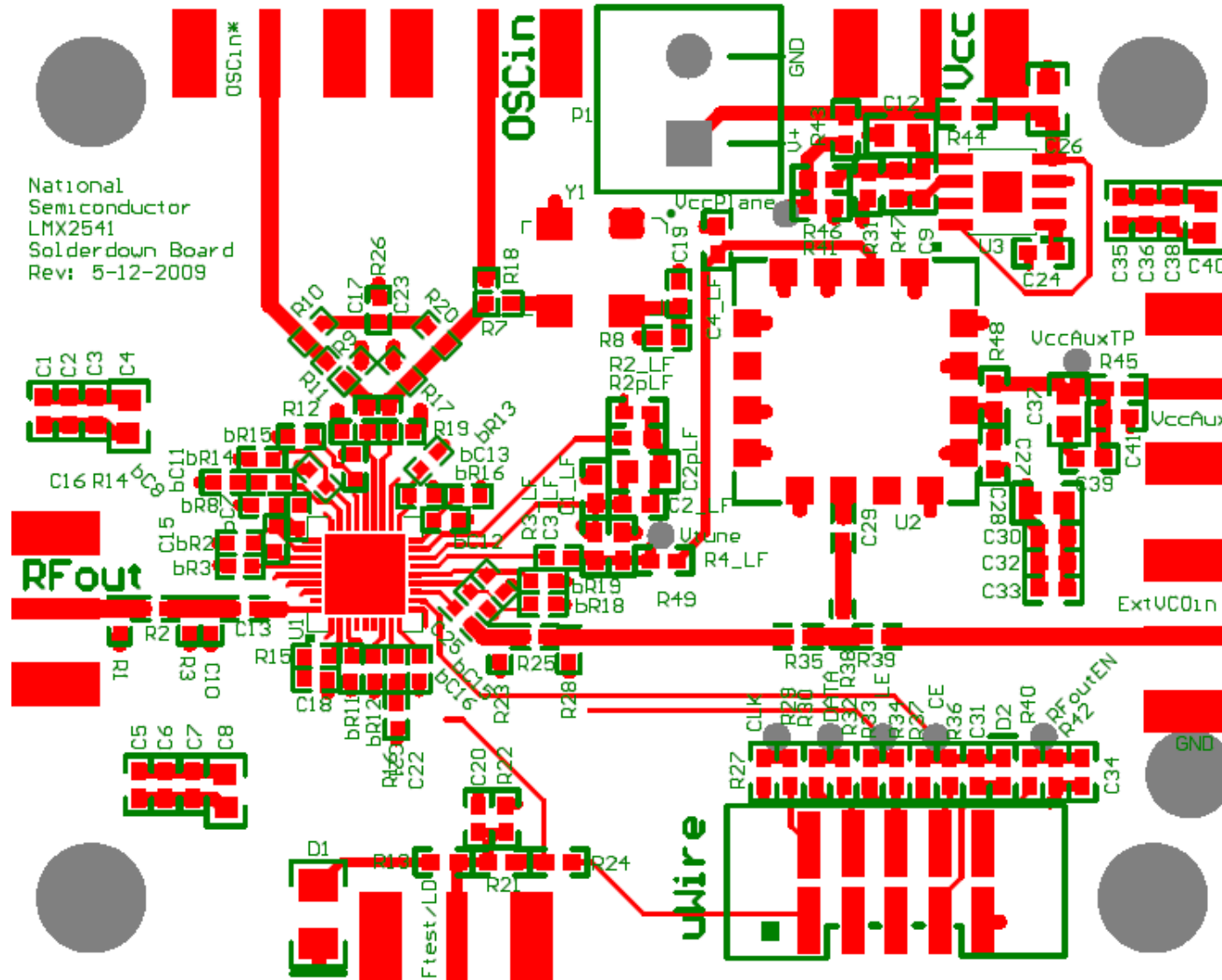
Appendix C: Schematics



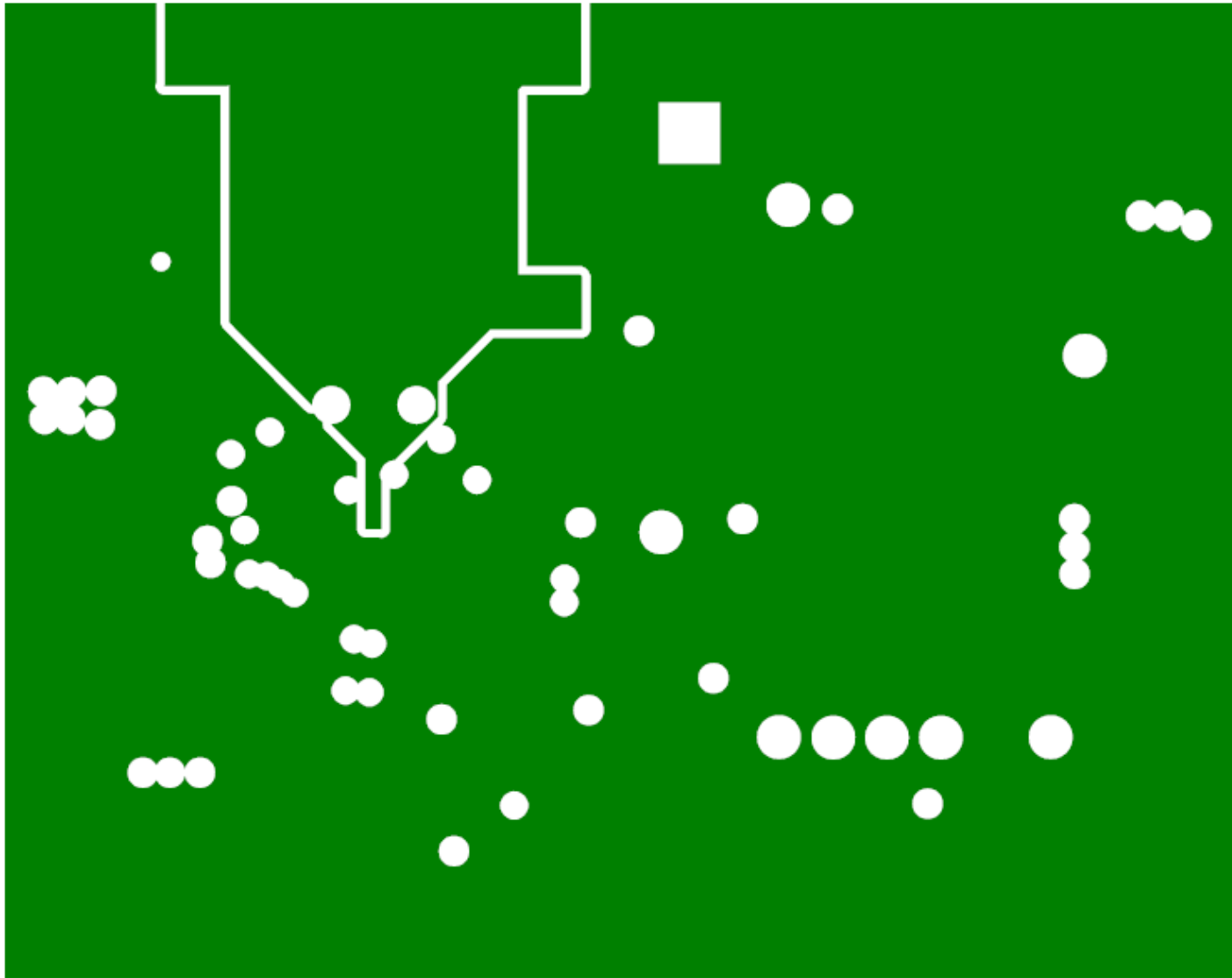
Appendix D: Assembly Drawing



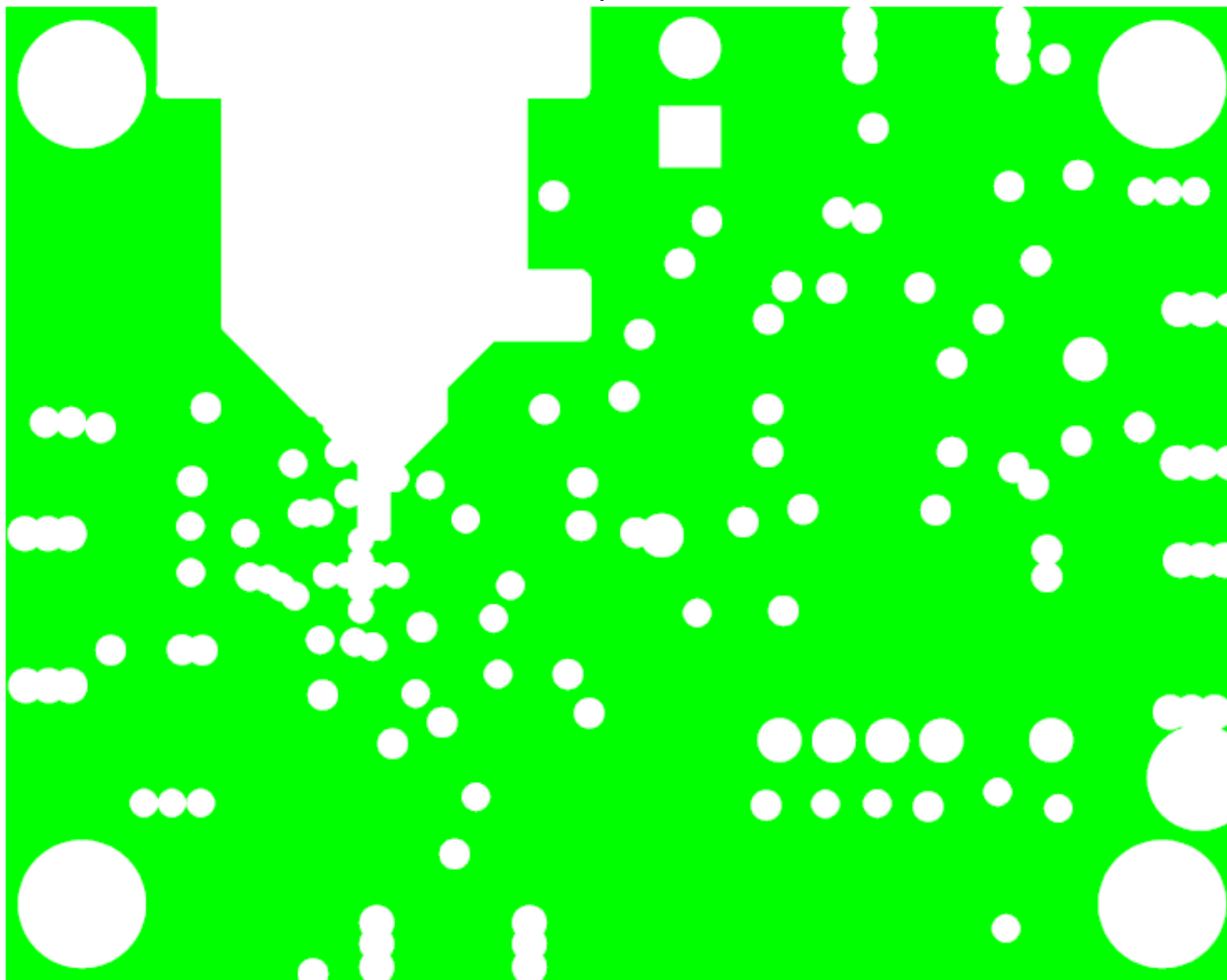
Top Layer and Silkscreen



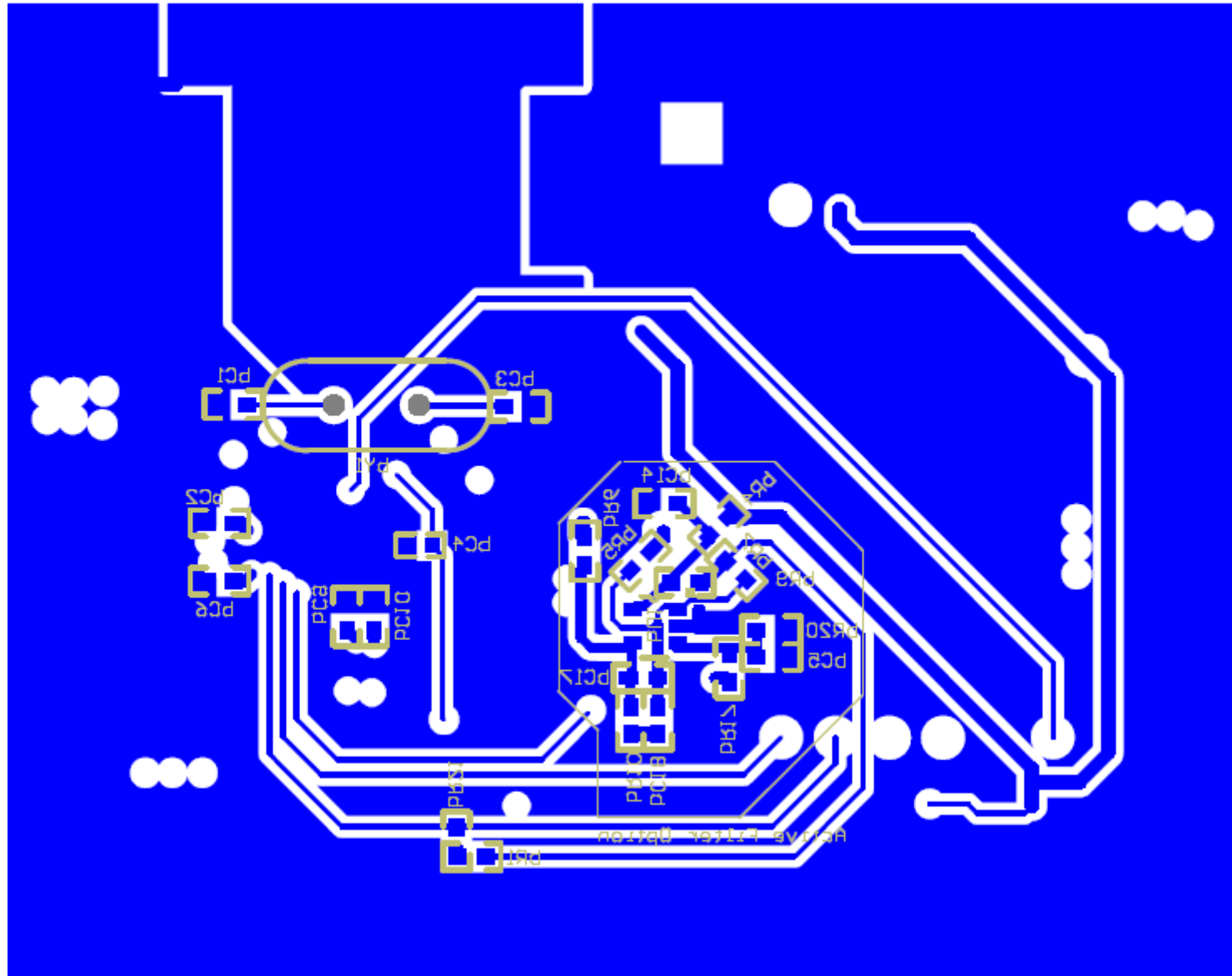
Mid Layer 1 (GND)



Mid Layer 2 (Vcc)



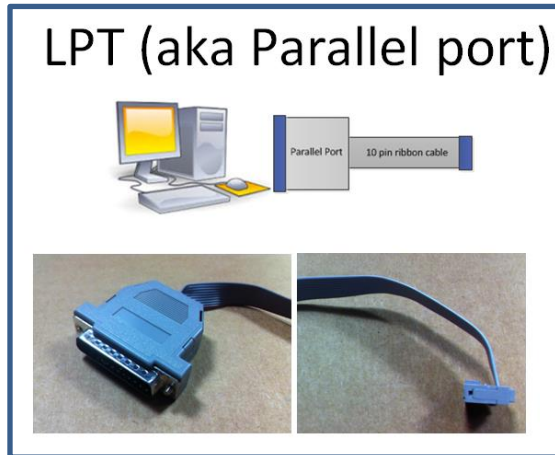
Bottom Layer and Silkscreen



Appendix E: Quick Start on EVM Communication

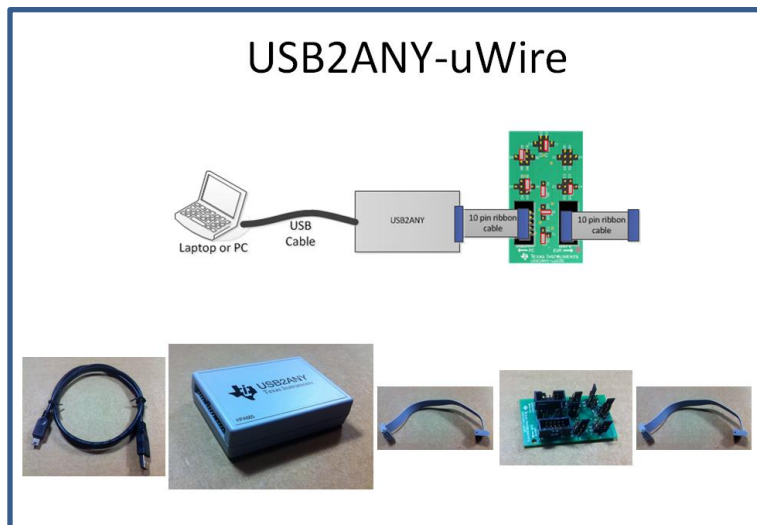
Codeloader is the software used to communicate with the EVM (Please download the latest version from TI.com - <http://www.ti.com/tool/codeloader>). This EVM can be controlled through the uWire interface on board. There are two options in communicating with the uWire interface from the computer.

OPTION 1



Open Codeloader.exe → Click "Select Device" → Click "Port Setup" tab → Click "LPT" (in Communication Mode)

OPTION 2

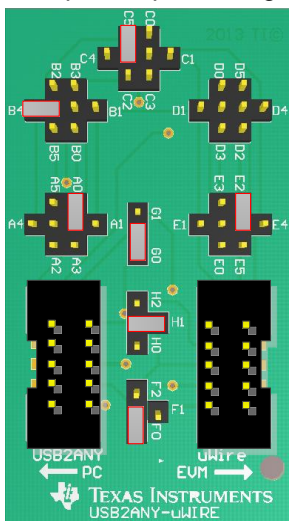


The Adapter Board

This table describes the pins configuration on the adapter board for each EVM board (See examples below table)

EVM	Jumper Bank								Code Loader Configuration
	A	B	C	D	E	F	G	H	
LMX2581	A4	B1	C2		E5	F1	G1	H1	BUFEN (pin 1), Trigger (pin 7)
LMX2541	A4		C3		E4	F1	G1	H1	CE (pin 1), Trigger (pin 10)
LMK0400x	A0		C3		E5	F1	G1	H1	GOE (pin 7)
LMK01000	A0		C1		E5	F1	G1	H1	GOE (pin 7)
LMK030xx	A0		C1		E5	F1	G1	H1	SYNC (pin 7)
LMK02000	A0		C1		E5	F1	G1	H1	SYNC (pin 7)
LMK0480x	A0	B2	C3		E5	F0	G0	H1	Status_CLKin1 (pin 3)
LMK04816/4906	A0	B2	C3		E5	F0	G0	H1	Status_CLKin1 (pin 3)
LMK01801	A0	B4	C5		E2	F0	G0	H1	Test (pin 3), SYNC0 (pin 10)
LMK0482x (prelease)	A0	B5	C3	D2	E4	F0	G0	H1	CLKin1_SEL (pin 6), Reset (pin 10)
LMX2531	A0				E5	F2	G1	H2	Trigger (pin 1)
LMX2485/7	A0		C1		E5	F2	G1	H0	ENOSC (pin 7), CE (pin 10)
LMK03200	A0				E5	F0	G0	H1	SYNC (pin 7)
LMK03806	A0		C1		E5	F0	G0	H1	
LMK04100	A0		C1		E5	F1	G1	H1	

Example adapter configuration (LMK01801)



Open Codeloader.exe → Click “Select Device” → Click “Port Setup” Tab → Click “USB” (in Communication Mode)
**Remember to also make modifications in “Pin Configuration” Section according to Table above.*

IMPORTANT NOTICE

Texas Instruments Incorporated and its subsidiaries (TI) reserve the right to make corrections, enhancements, improvements and other changes to its semiconductor products and services per JESD46, latest issue, and to discontinue any product or service per JESD48, latest issue. Buyers should obtain the latest relevant information before placing orders and should verify that such information is current and complete. All semiconductor products (also referred to herein as "components") are sold subject to TI's terms and conditions of sale supplied at the time of order acknowledgment.

TI warrants performance of its components to the specifications applicable at the time of sale, in accordance with the warranty in TI's terms and conditions of sale of semiconductor products. Testing and other quality control techniques are used to the extent TI deems necessary to support this warranty. Except where mandated by applicable law, testing of all parameters of each component is not necessarily performed.

TI assumes no liability for applications assistance or the design of Buyers' products. Buyers are responsible for their products and applications using TI components. To minimize the risks associated with Buyers' products and applications, Buyers should provide adequate design and operating safeguards.

TI does not warrant or represent that any license, either express or implied, is granted under any patent right, copyright, mask work right, or other intellectual property right relating to any combination, machine, or process in which TI components or services are used. Information published by TI regarding third-party products or services does not constitute a license to use such products or services or a warranty or endorsement thereof. Use of such information may require a license from a third party under the patents or other intellectual property of the third party, or a license from TI under the patents or other intellectual property of TI.

Reproduction of significant portions of TI information in TI data books or data sheets is permissible only if reproduction is without alteration and is accompanied by all associated warranties, conditions, limitations, and notices. TI is not responsible or liable for such altered documentation. Information of third parties may be subject to additional restrictions.

Resale of TI components or services with statements different from or beyond the parameters stated by TI for that component or service voids all express and any implied warranties for the associated TI component or service and is an unfair and deceptive business practice. TI is not responsible or liable for any such statements.

Buyer acknowledges and agrees that it is solely responsible for compliance with all legal, regulatory and safety-related requirements concerning its products, and any use of TI components in its applications, notwithstanding any applications-related information or support that may be provided by TI. Buyer represents and agrees that it has all the necessary expertise to create and implement safeguards which anticipate dangerous consequences of failures, monitor failures and their consequences, lessen the likelihood of failures that might cause harm and take appropriate remedial actions. Buyer will fully indemnify TI and its representatives against any damages arising out of the use of any TI components in safety-critical applications.

In some cases, TI components may be promoted specifically to facilitate safety-related applications. With such components, TI's goal is to help enable customers to design and create their own end-product solutions that meet applicable functional safety standards and requirements. Nonetheless, such components are subject to these terms.

No TI components are authorized for use in FDA Class III (or similar life-critical medical equipment) unless authorized officers of the parties have executed a special agreement specifically governing such use.

Only those TI components which TI has specifically designated as military grade or "enhanced plastic" are designed and intended for use in military/aerospace applications or environments. Buyer acknowledges and agrees that any military or aerospace use of TI components which have **not** been so designated is solely at the Buyer's risk, and that Buyer is solely responsible for compliance with all legal and regulatory requirements in connection with such use.

TI has specifically designated certain components as meeting ISO/TS16949 requirements, mainly for automotive use. In any case of use of non-designated products, TI will not be responsible for any failure to meet ISO/TS16949.

Products

Audio	www.ti.com/audio
Amplifiers	amplifier.ti.com
Data Converters	dataconverter.ti.com
DLP® Products	www.dlp.com
DSP	dsp.ti.com
Clocks and Timers	www.ti.com/clocks
Interface	interface.ti.com
Logic	logic.ti.com
Power Mgmt	power.ti.com
Microcontrollers	microcontroller.ti.com
RFID	www.ti-rfid.com
OMAP Applications Processors	www.ti.com/omap
Wireless Connectivity	www.ti.com/wirelessconnectivity

Applications

Automotive and Transportation	www.ti.com/automotive
Communications and Telecom	www.ti.com/communications
Computers and Peripherals	www.ti.com/computers
Consumer Electronics	www.ti.com/consumer-apps
Energy and Lighting	www.ti.com/energy
Industrial	www.ti.com/industrial
Medical	www.ti.com/medical
Security	www.ti.com/security
Space, Avionics and Defense	www.ti.com/space-avionics-defense
Video and Imaging	www.ti.com/video

TI E2E Community

e2e.ti.com