
24-Bit, 192-kHz Sampling, Enhanced Multilevel, Delta-Sigma, Audio Digital-to-Analog Converter

FEATURES

- 24-Bit Resolution
- Analog Performance ($V_{CC} = 5\text{ V}$):
 - Dynamic Range: 106 dB
 - SNR: 106 dB, Typical
 - THD+N: 0.002%, Typical
 - Full-Scale Output: 3.9 Vp-p, Typical
- 4x/8x Oversampling Digital Filter:
 - Stop-Band Attenuation: –50 dB
 - Pass-Band Ripple: $\pm 0.04\text{ dB}$
- Sampling Frequency: 5 kHz to 200 kHz
- System Clock: 128 f_S, 192 f_S, 256 f_S, 384 f_S, 512 f_S, 768 f_S, 1152 f_S With Autodetect
- Software Control (PCM1780, PCM1782):
 - Accepts 16-, 18-, 20-, and 24-Bit Audio Data
 - Formats: Right-Justified, I²S, and Left-Justified
 - Digital Attenuation: Mode Selectable
 - 0 dB to –63 dB, 0.5 dB/step
 - 0 dB to –100 dB, 1 dB/step
 - Digital De-Emphasis
 - Digital Filter Rolloff: Sharp or Slow
 - Soft Mute
 - Zero Flags for Each Output
 - Open-Drain Output Zero Flag (PCM1782)
- Hardware Control (PCM1781):
 - I²S and 16-Bit Word, Right-Justified
 - Digital De-Emphasis
 - Soft Mute
 - Zero Flag for L-, R-Channel Common Output
- Power Supply: 5-V Single Supply
- Small, 16-Lead SSOP Package (150 mil)
- Pin-Compatible with PCM1680

APPLICATIONS

- A/V Receivers
- DVD Movie Players
- DVD Add-On Cards For High-End PCs
- DVD Audio Players
- HDTV Receivers
- Car Audio Systems
- Other Applications Requiring 24-Bit Audio

DESCRIPTION

The PCM1780/81/82 is a CMOS, monolithic, integrated circuit, which includes stereo digital-to-analog converters and support circuitry in a small 16-lead SSOP package. The data converters use TI's enhanced multilevel delta-sigma architecture to achieve excellent dynamic performance and improved tolerance to clock jitter. The PCM1780/81/82 accepts industry standard audio data formats with 16- to 24-bit data, providing easy interfacing to audio DSP and decoder chips. Sampling rates up to 200 kHz are supported. The PCM1780/82 provides a full set of user-programmable functions through a three-wire serial control port, which supports register write functions. The PCM1781 provides a subset of user-programmable functions through four control pins.

The PCM1780 is pin-compatible with the PCM1680 (8-channel DAC).



Please be aware that an important notice concerning availability, standard warranty, and use in critical applications of Texas Instruments semiconductor products and disclaimers thereto appears at the end of this data sheet.

System Two, Audio Precision are trademarks of Audio Precision, Inc.
All other trademarks are the property of their respective owners.



This integrated circuit can be damaged by ESD. Texas Instruments recommends that all integrated circuits be handled with appropriate precautions. Failure to observe proper handling and installation procedures can cause damage. ESD damage can range from subtle performance degradation to complete device failure. Precision integrated circuits may be more susceptible to damage because very small parametric changes could cause the device not to meet its published specifications.

ABSOLUTE MAXIMUM RATINGS

over operating free-air temperature range (unless otherwise noted)⁽¹⁾

| | | PCM1780, PCM1781, PCM1782 |
|--|----------|-------------------------------------|
| Supply voltage | V_{CC} | -0.3 V to 6.5 V |
| Input voltage | | -0.3 V to $V_{CC} + 0.3$ V, < 6.5 V |
| Input current (any pins except supplies) | | ±10 mA |
| Ambient temperature under bias | | -40°C to 125°C |
| Storage temperature | | -55°C to 150°C |
| Junction temperature | | 150°C |
| Lead temperature (soldering) | | 260°C, 5 s |
| Package temperature (IR reflow, peak) | | 260°C |

(1) Stresses beyond those listed under "absolute maximum ratings" may cause permanent damage to the device. These are stress ratings only, and functional operation of the device at these or any other conditions beyond those indicated under "recommended operating conditions" is not implied. Exposure to absolute-maximum-rated conditions for extended periods may affect device reliability.

RECOMMENDED OPERATING CONDITIONS

over operating free-air temperature range

| | | MIN | NOM | MAX | UNIT |
|---|----------------|-------|-----|--------|------|
| Digital and analog supply voltage, V_{CC} | | 4.5 | 5 | 5.5 | V |
| Digital input logic family | | TTL | | | |
| Digital input clock frequency | System clock | 8.192 | | 36.864 | MHz |
| | Sampling clock | 32 | | 192 | kHz |
| Analog output load resistance | | 5 | | | kΩ |
| Analog output load capacitance | | | | 50 | pF |
| Digital output load capacitance | | | | 20 | pF |
| Operating free-air temperature, T_A | | -25 | | 85 | °C |

ELECTRICAL CHARACTERISTICS

All specifications at $T_A = 25^\circ\text{C}$, $V_{CC} = 5$ V, $f_S = 48$ kHz, system clock = $512 f_S$, and 24-bit data (unless otherwise noted)

| PARAMETER | | TEST CONDITIONS | MIN | TYP | MAX | UNIT |
|-----------------------------|--------------------|-----------------|-----|--|-----|------|
| Resolution | | | | 24 | | Bits |
| DATA FORMAT | | | | | | |
| Audio data interface format | PCM1780, PCM1782 | | | Right-justified, I ² S, left-justified | | |
| | PCM1781 | | | I ² S, right-justified | | |
| Audio data bit length | PCM1780, PCM1782 | | | 16-, 18-, 20-, 24-bit selectable | | |
| | PCM1781 | | | 16–24-bit I ² S, 16-bit right-justified | | |
| Audio data format | | | | MSB-first, 2s complement | | |
| f_S | Sampling frequency | | 5 | | 200 | kHz |
| System clock frequency | | | | 128 f_S , 192 f_S , 256 f_S , 384 f_S , 512 f_S , 768 f_S , 1152 f_S | | |

ELECTRICAL CHARACTERISTICS (continued)

 All specifications at $T_A = 25^\circ\text{C}$, $V_{CC} = 5\text{ V}$, $f_S = 48\text{ kHz}$, system clock = $512 f_S$, and 24-bit data (unless otherwise noted)

| PARAMETER | | TEST CONDITIONS | MIN | TYP | MAX | UNIT | |
|---|-----------------------------------|---|----------------|---------------|----------|---------------|--|
| DIGITAL INPUT/OUTPUT | | | | | | | |
| Logic family | | | TTL compatible | | | | |
| V_{IH} | Input logic level | | 2 | | | Vdc | |
| V_{IL} | | | 0.8 | | | | |
| $I_{IH}^{(1)}$ | Input logic current | $V_{IN} = V_{CC}$ | | 10 | | μA | |
| $I_{IL}^{(1)}$ | | $V_{IN} = 0\text{ V}$ | | -10 | | | |
| $I_{IH}^{(2)}$ | | $V_{IN} = V_{CC}$ | | 65 | 100 | | |
| $I_{IL}^{(2)}$ | | $V_{IN} = 0\text{ V}$ | | | -10 | | |
| $V_{OH}^{(3)}$ | Output logic level | $I_{OH} = -1\text{ mA}$ | 2.4 | | | Vdc | |
| $V_{OL}^{(4)}$ | | $I_{OL} = 1\text{ mA}$ | 0.4 | | | | |
| DYNAMIC PERFORMANCE⁽⁵⁾ | | | | | | | |
| THD+N | Total harmonic distortion + noise | $V_{OUT} = 0\text{ dB}$, $f_S = 48\text{ kHz}$ | | 0.002% | 0.006% | | |
| | | $V_{OUT} = 0\text{ dB}$, $f_S = 96\text{ kHz}$, system clock = $256 f_S$ | | 0.003% | | | |
| | | $V_{OUT} = 0\text{ dB}$, $f_S = 192\text{ kHz}$, system clock = $128 f_S$ | | 0.004% | | | |
| Dynamic range | | EIAJ, A-weighted, $f_S = 48\text{ kHz}$ | 100 | 106 | | dB | |
| | | A-weighted, $f_S = 96\text{ kHz}$, system clock = $256 f_S$ | | 104 | | | |
| | | A-weighted, $f_S = 192\text{ kHz}$, system clock = $128 f_S$ | | 102 | | | |
| SNR | Signal-to-noise ratio | EIAJ, A-weighted, $f_S = 48\text{ kHz}$ | 100 | 106 | | dB | |
| | | A-weighted, $f_S = 96\text{ kHz}$, system clock = $256 f_S$ | | 104 | | | |
| | | A-weighted, $f_S = 192\text{ kHz}$, system clock = $128 f_S$ | | 102 | | | |
| Channel separation | | $f_S = 48\text{ kHz}$ | 97 | 103 | | dB | |
| | | $f_S = 96\text{ kHz}$, system clock = $256 f_S$ | | 101 | | | |
| | | $f_S = 192\text{ kHz}$, system clock = $128 f_S$ | | 100 | | | |
| DC ACCURACY | | | | | | | |
| Gain error | | | | ± 1 | ± 6 | % of FSR | |
| Gain mismatch, channel-to-channel | | | | ± 1 | ± 6 | % of FSR | |
| Bipolar zero error | | $V_{OUT} = 49\%$ of V_{CC} at BPZ input | | ± 30 | ± 80 | mV | |
| ANALOG OUTPUT | | | | | | | |
| Output voltage | | Full scale (-0 dB) | | $0.78 V_{CC}$ | | Vp-p | |
| Bipolar zero voltage | | | | $0.49 V_{CC}$ | | Vdc | |
| Load impedance | | AC-coupled load | | 5 | | k Ω | |
| DIGITAL FILTER PERFORMANCE | | | | | | | |
| Filter Characteristics (Sharp Rolloff) | | | | | | | |
| Pass band | | $\pm 0.04\text{ dB}$ | | $0.454 f_S$ | | | |
| Stop band | | | $0.546 f_S$ | | | | |
| Pass-band ripple | | | | 0.04 | | dB | |
| Stop-band attenuation | | Stop band = $0.546 f_S$ | | -50 | | dB | |

(1) Pins 5, 6, 7, 8: SCK, DATA, BCK, LRCK

 (2) Pins 2, 3, 4: \overline{MS} , MC, MD (PCM1780/PCM1782). Pins 1, 2, 3, 4: FMT, DEMP0, DEMP1, MUTE (PCM1781)

(3) Pins 1, 16: ZEROL, ZEROR (PCM1780). Pin 16: ZEROA (PCM1781)

(4) Pins 1, 16: ZEROL, ZEROR (PCM1780/PCM1782). Pin 16: ZEROA (PCM1781)

(5) Analog performance specifications are measured using the System Two™ Cascade audio measurement system by Audio Precision™.

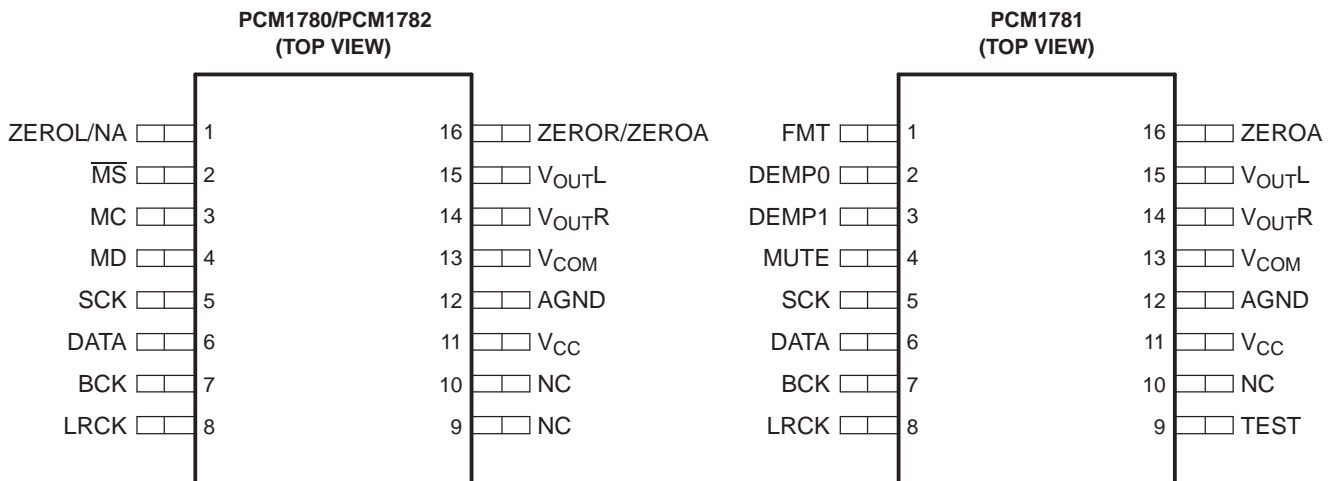
ELECTRICAL CHARACTERISTICS (continued)

All specifications at $T_A = 25^\circ\text{C}$, $V_{CC} = 5\text{ V}$, $f_S = 48\text{ kHz}$, system clock = $512 f_S$, and 24-bit data (unless otherwise noted)

| PARAMETER | TEST CONDITIONS | MIN | TYP | MAX | UNIT |
|---|---|-------------|-----------|-------------|--------------------|
| Filter Characteristics (Slow Rolloff, PCM1780/PCM1782) | | | | | |
| Pass band | $\pm 0.5\text{ dB}$ | | | $0.198 f_S$ | |
| Stop band | | $0.884 f_S$ | | | |
| Pass-band ripple | | | | ± 0.5 | dB |
| Stop-band attenuation | Stop band = $0.884 f_S$ | -35 | | | dB |
| Delay time | | | $20/f_S$ | | s |
| De-emphasis error | | | ± 0.1 | | dB |
| ANALOG FILTER PERFORMANCE | | | | | |
| Frequency response | at 20 kHz | | -0.02 | | dB |
| | at 44 kHz | | -0.07 | | |
| POWER SUPPLY REQUIREMENTS | | | | | |
| V_{CC} Voltage range | | 4.5 | 5 | 5.5 | Vdc |
| I_{CC} Supply current | $f_S = 48\text{ kHz}$ | | 25 | 40 | mA |
| | $f_S = 96\text{ kHz}$, system clock = $256 f_S$ | | 30 | | |
| | $f_S = 192\text{ kHz}$, system clock = $128 f_S$ | | 30 | | |
| Power dissipation | $f_S = 48\text{ kHz}$ | | 125 | 200 | mW |
| | $f_S = 96\text{ kHz}$, system clock = $256 f_S$ | | 150 | | |
| | $f_S = 192\text{ kHz}$, system clock = $128 f_S$ | | 150 | | |
| TEMPERATURE RANGE | | | | | |
| T_A Operation temperature | | -25 | | 85 | $^\circ\text{C}$ |
| θ_{JA} Thermal resistance | | | 115 | | $^\circ\text{C/W}$ |

DEVICE INFORMATION

PIN ASSIGNMENTS



P0014-01

DEVICE INFORMATION (continued)
TERMINAL FUNCTIONS—PCM1780/PCM1782

| TERMINAL | | I/O | DESCRIPTION |
|-------------------|-------|-----|--|
| NAME | NO. | | |
| AGND | 12 | – | Ground |
| BCK | 7 | I | Audio data bit clock input ⁽¹⁾ |
| DATA | 6 | I | Audio data digital input ⁽¹⁾ |
| LRCK | 8 | I | Audio data left and right clock input ⁽¹⁾ |
| MC | 3 | I | Mode control clock input ⁽¹⁾⁽²⁾ |
| MD | 4 | I | Mode control data input ⁽¹⁾⁽²⁾ |
| \overline{MS} | 2 | I | Mode control select input ⁽¹⁾⁽²⁾ |
| NC | 9, 10 | – | No connection |
| SCK | 5 | I | System clock input ⁽¹⁾ |
| V _{CC} | 11 | – | Power supply, 5-V |
| V _{COM} | 13 | – | Common voltage decoupling |
| V _{OUTL} | 15 | O | Analog output for L-channel |
| V _{OUTR} | 14 | O | Analog output for R-channel |
| ZEROL/NA | 1 | O | Zero flag output for L-channel / No assign ⁽³⁾ |
| ZEROR/ZEROA | 16 | O | Zero flag output for R-channel / Zero flag output for L- and R-channels ⁽³⁾ |

(1) Schmitt-trigger input

(2) Pulldown

(3) Open-drain output (PCM1782)

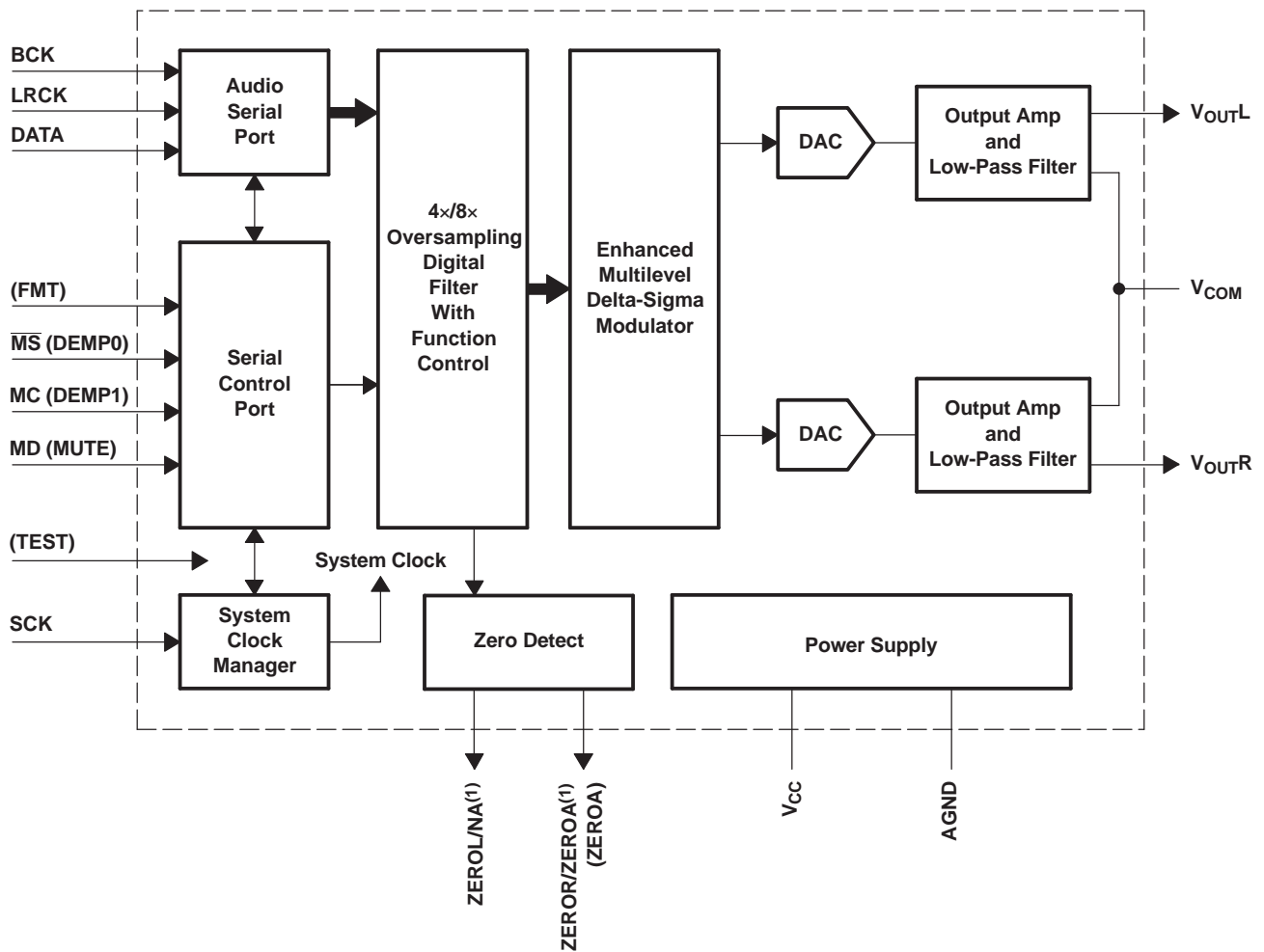
TERMINAL FUNCTIONS—PCM1781

| TERMINAL | | I/O | DESCRIPTION |
|-------------------|-----|-----|---|
| NAME | NO. | | |
| AGND | 12 | – | Ground |
| BCK | 7 | I | Audio data bit clock input ⁽¹⁾ |
| DATA | 6 | I | Audio data digital input ⁽¹⁾ |
| DEMP0 | 2 | I | De-emphasis control ⁽¹⁾⁽²⁾ |
| DEMP1 | 3 | I | De-emphasis control ⁽¹⁾⁽²⁾ |
| FMT | 1 | I | Data format select ⁽¹⁾⁽²⁾ |
| LRCK | 8 | I | Audio data left and right clock input ⁽¹⁾ |
| MUTE | 4 | I | Soft mute control ⁽¹⁾⁽²⁾ |
| NC | 10 | – | No connection |
| SCK | 5 | I | System clock input ⁽¹⁾ |
| TEST | 9 | – | Test pin for factory use. Must be LOW or open ⁽¹⁾⁽²⁾ |
| V _{CC} | 11 | – | Power supply, 5-V |
| V _{COM} | 13 | – | Common voltage decoupling |
| V _{OUTL} | 15 | O | Analog output for L-channel |
| V _{OUTR} | 14 | O | Analog output for R-channel |
| ZEROA | 16 | O | Zero flag output for L- and R-channels |

(1) Schmitt-trigger input

(2) Pulldown

Functional Block Diagram



(1) Open-drain output for the PCM1782

NOTE: Signal names in parentheses () are for the PCM1781.

B0030-01

TYPICAL PERFORMANCE CURVES

All specifications at $T_A = 25^\circ\text{C}$, $V_{CC} = 5\text{ V}$, $f_s = 48\text{ kHz}$, system clock = $512 f_s$, and 24-bit data, unless otherwise noted

Digital Filter (De-Emphasis Off)

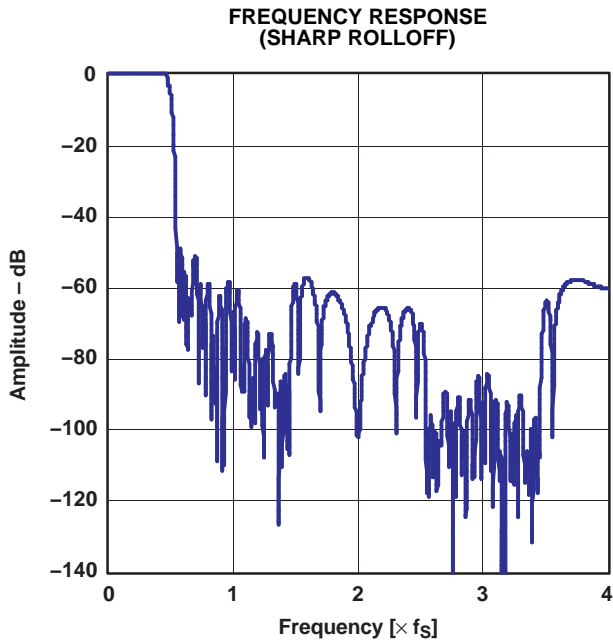


Figure 1.

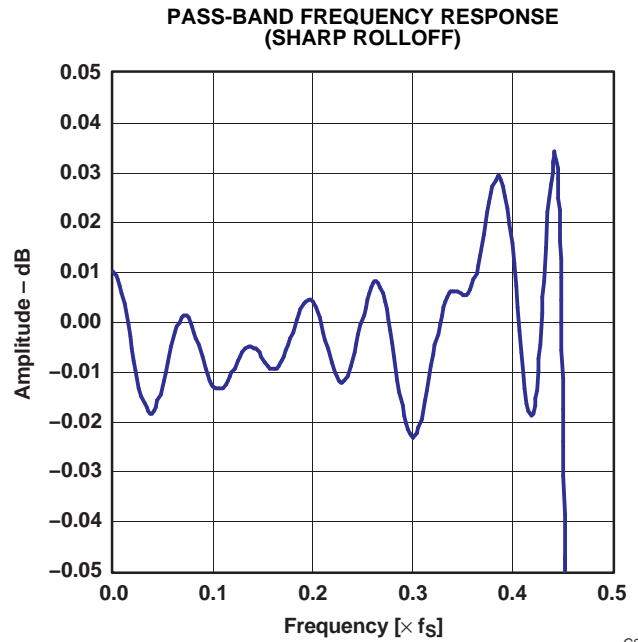


Figure 2.

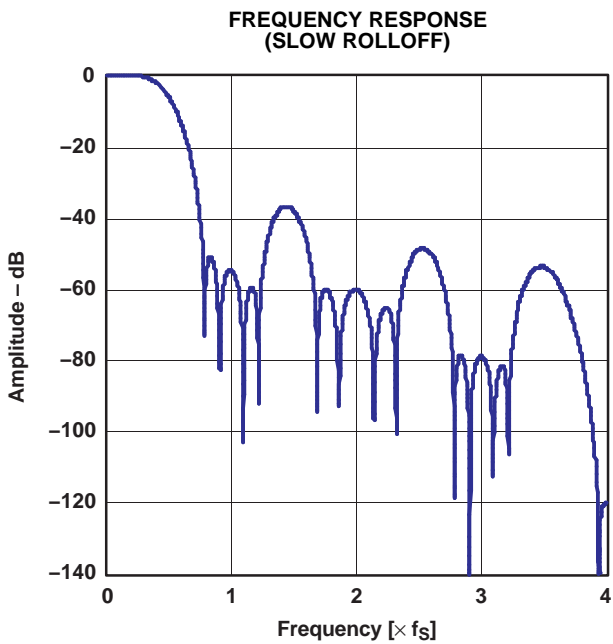


Figure 3.

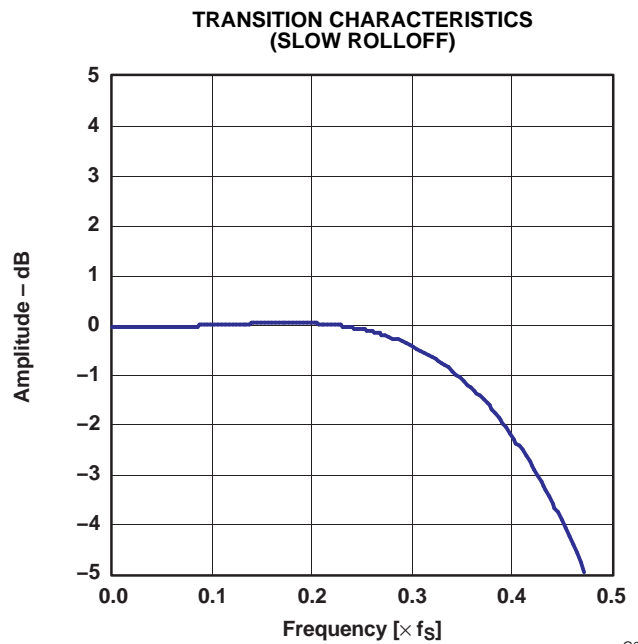


Figure 4.

TYPICAL PERFORMANCE CURVES (Continued)

All specifications at $T_A = 25^\circ\text{C}$, $V_{CC} = 5\text{ V}$, $f_S = 48\text{ kHz}$, system clock = $512 f_S$, and 24-bit data, unless otherwise noted

De-Emphasis Filter

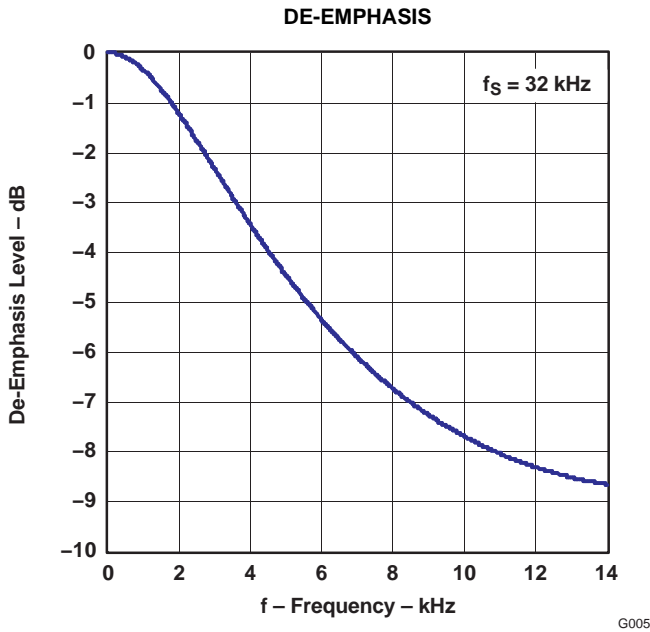


Figure 5.

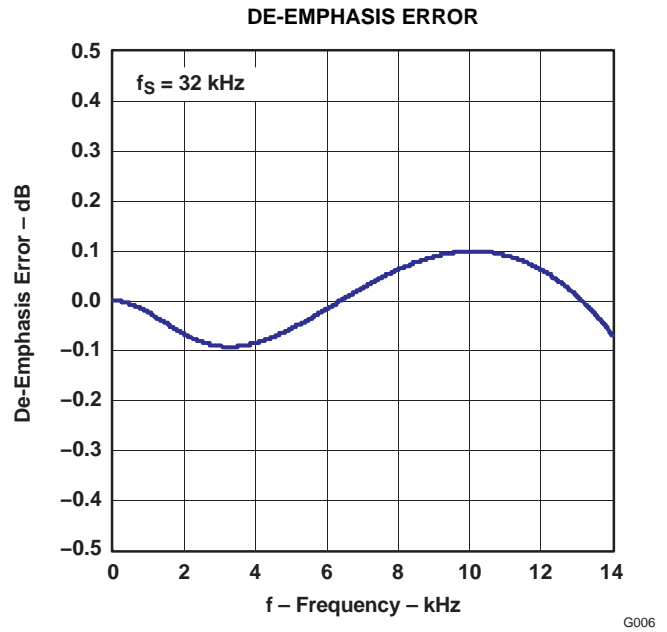


Figure 6.

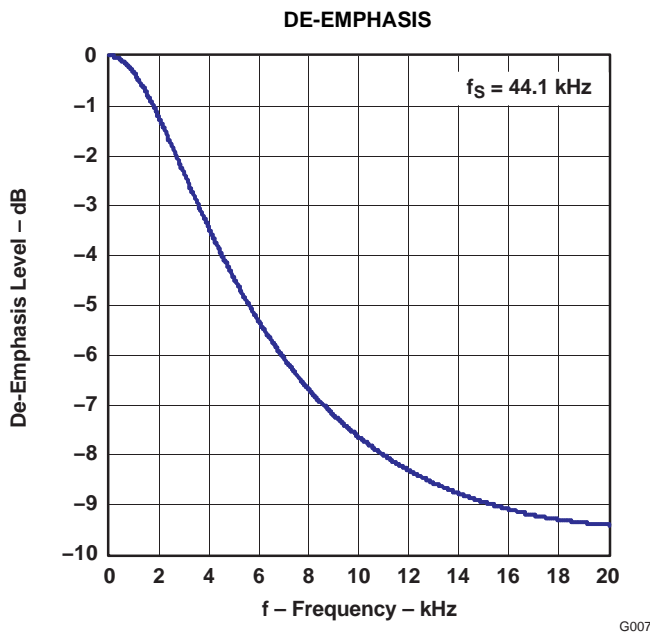


Figure 7.

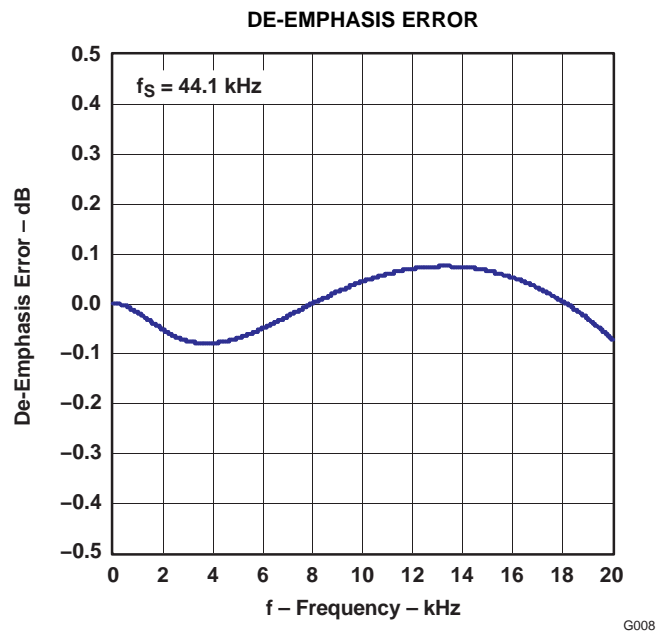


Figure 8.

TYPICAL PERFORMANCE CURVES (Continued)

All specifications at $T_A = 25^\circ\text{C}$, $V_{CC} = 5\text{ V}$, $f_S = 48\text{ kHz}$, system clock = $512 f_S$, and 24-bit data, unless otherwise noted

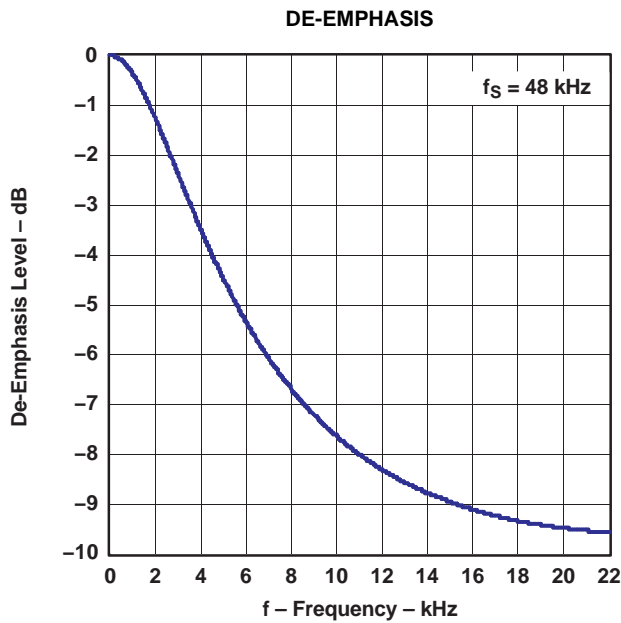


Figure 9.

G009

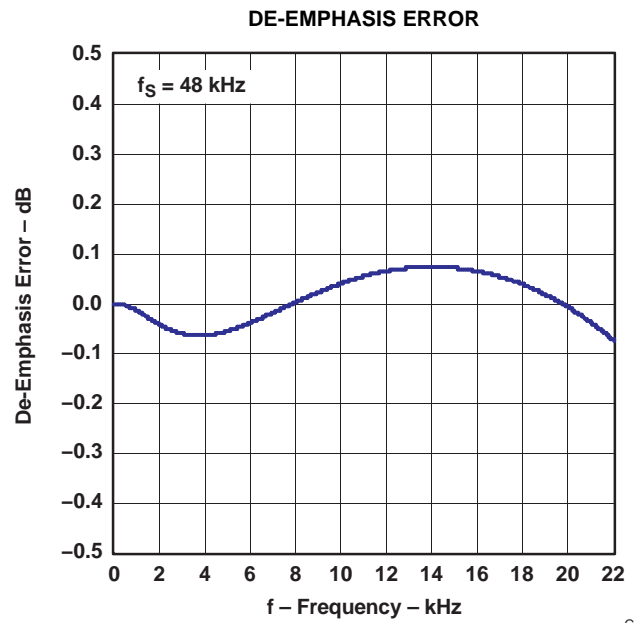


Figure 10.

G010

Analog Filter

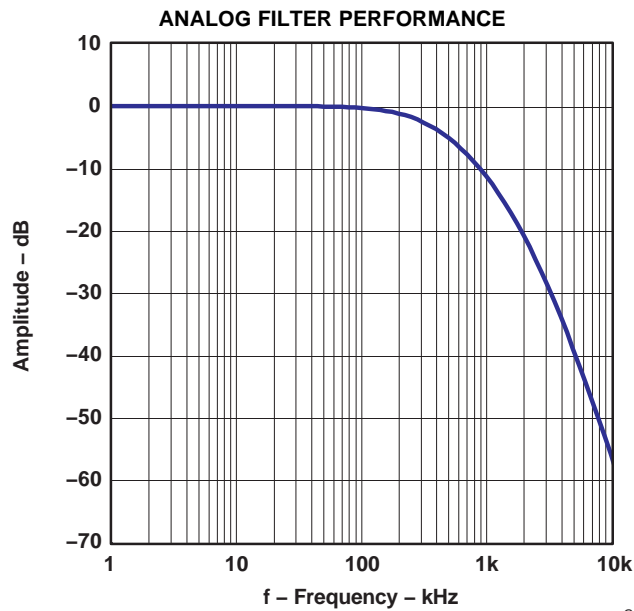


Figure 11.

G011

TYPICAL PERFORMANCE CURVES (Continued)

All specifications at $T_A = 25^\circ\text{C}$, $V_{CC} = 5\text{ V}$, $f_s = 48\text{ kHz}$, system clock = $512 f_s$, and 24-bit data, unless otherwise noted

Analog Dynamic Performance

Supply Voltage Characteristics

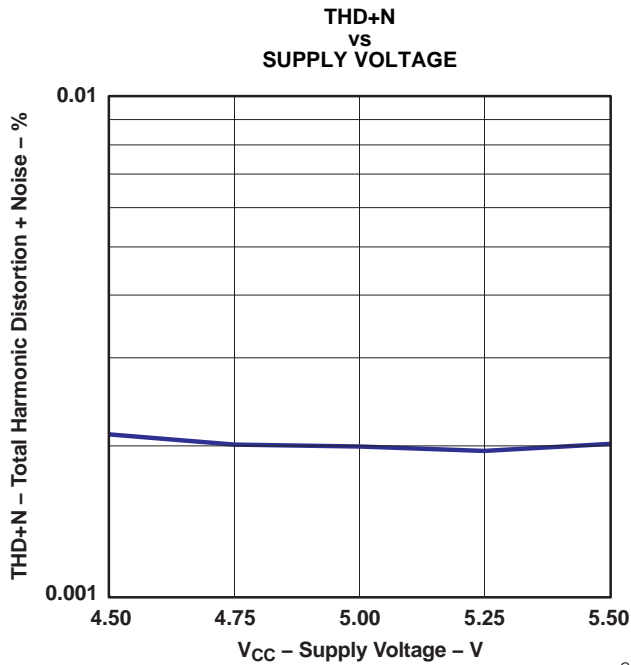


Figure 12.

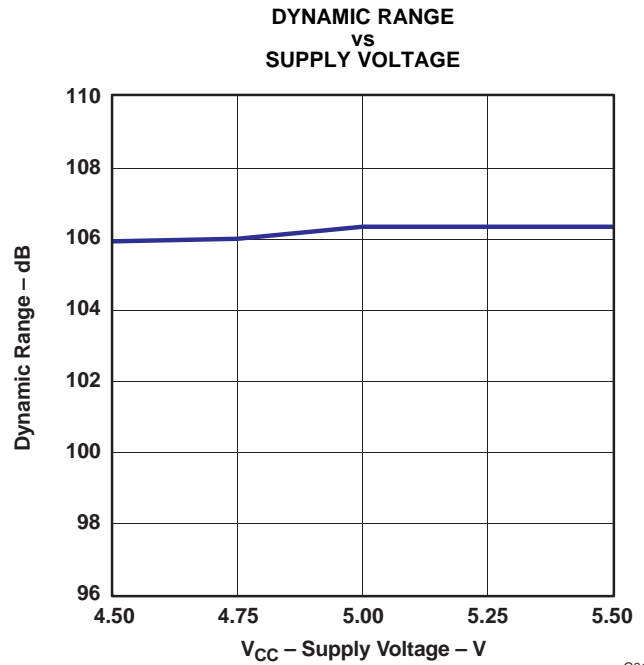


Figure 13.

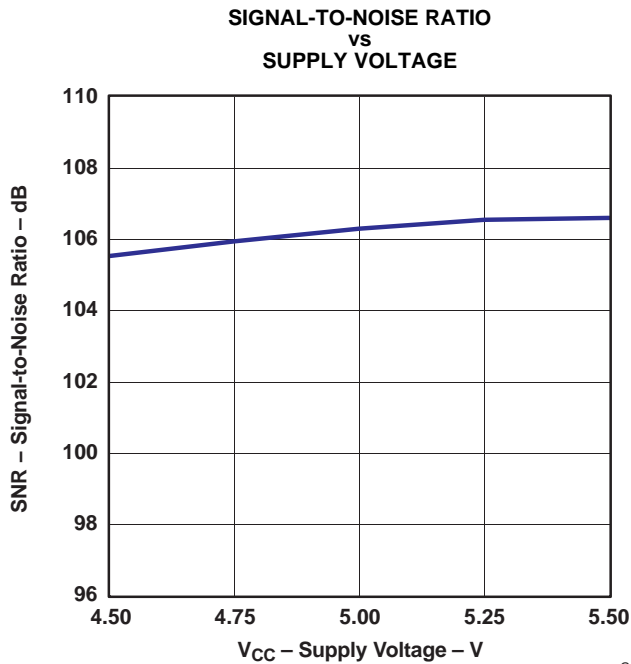


Figure 14.

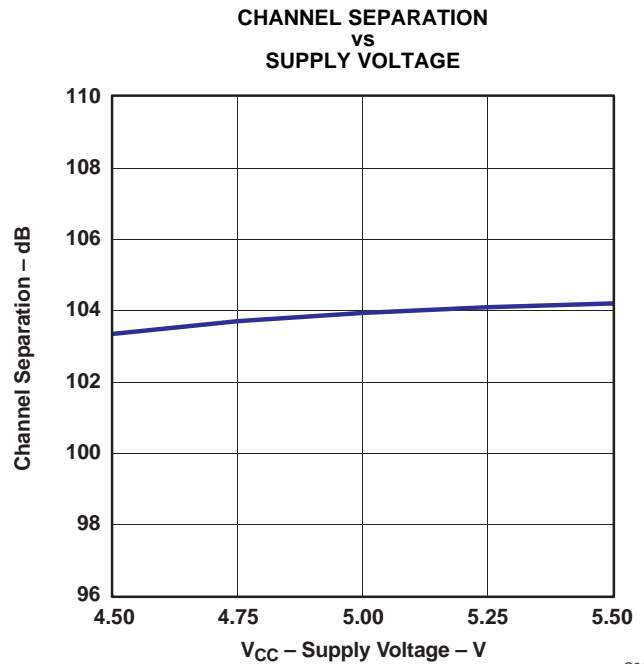


Figure 15.

TYPICAL PERFORMANCE CURVES (Continued)

All specifications at $T_A = 25^\circ\text{C}$, $V_{CC} = 5\text{ V}$, $f_s = 48\text{ kHz}$, system clock = $512 f_s$, and 24-bit data, unless otherwise noted

Temperature Characteristics

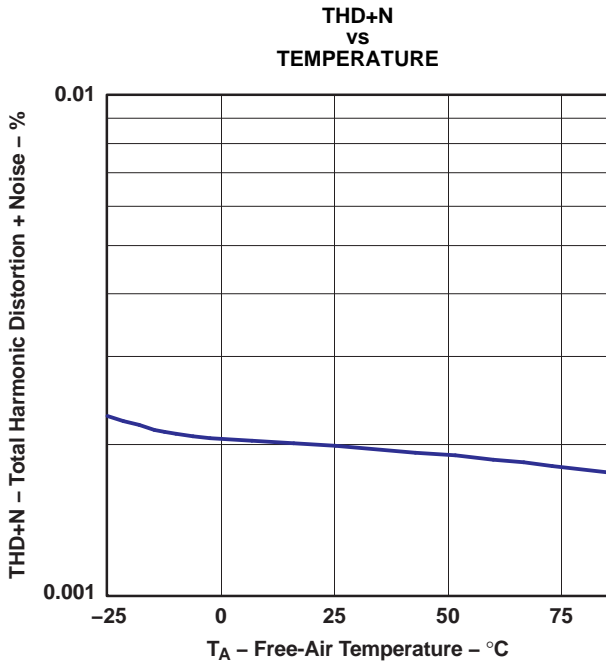


Figure 16.

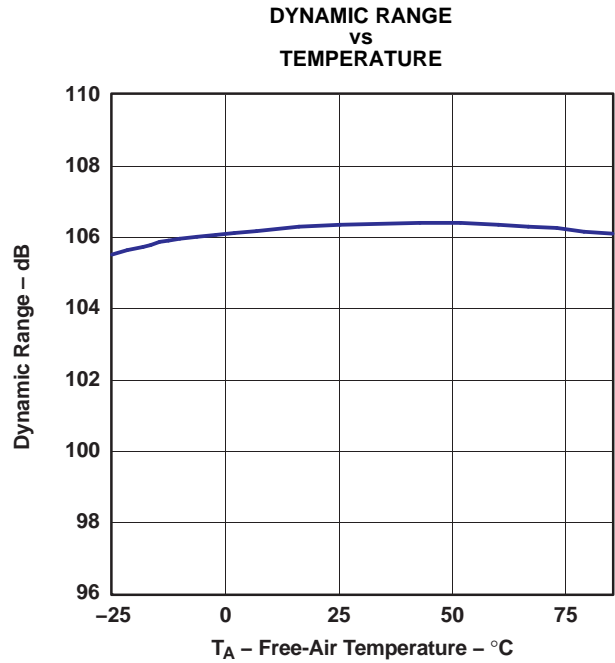


Figure 17.

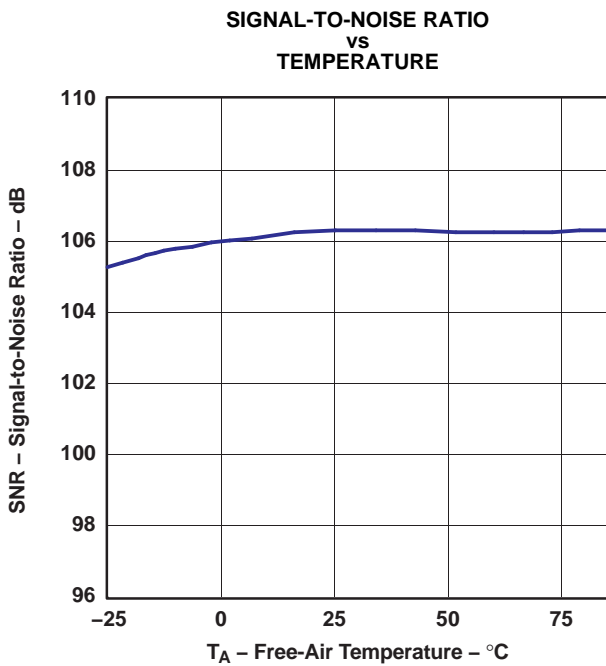


Figure 18.

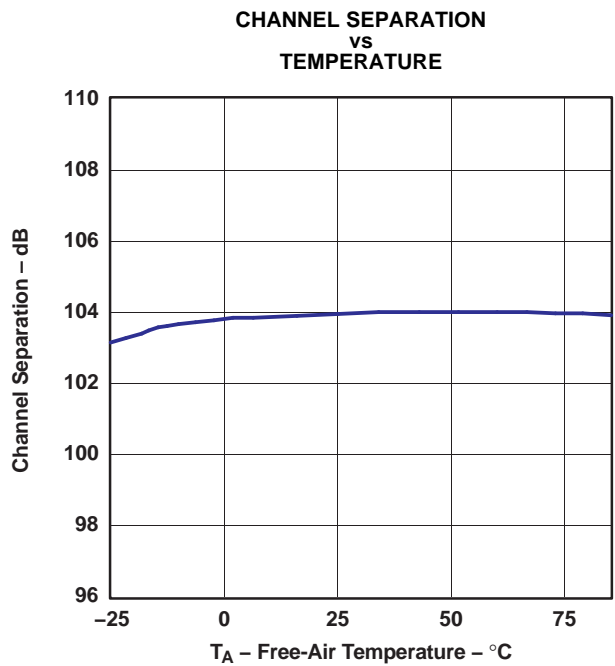


Figure 19.

SYSTEM CLOCK AND RESET FUNCTIONS

System Clock Input

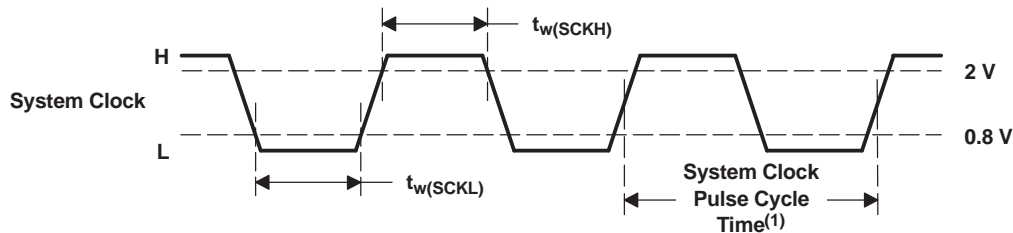
The PCM1780/81/82 requires a system clock for operating the digital interpolation filters and multilevel delta-sigma modulators. The system clock is applied at the SCK input (pin 5). Table 1 shows examples of system clock frequencies for common audio sampling rates.

Figure 20 shows the timing requirements for the system clock input. For optimal performance, it is important to use a clock source with low phase jitter and noise. TI's PLL170x family of multiclock generators is an excellent choice for providing the PCM1780/81/82 system clock.

Table 1. System Clock Frequencies for Common Audio Sampling Frequencies

| SAMPLING FREQUENCY | SYSTEM CLOCK FREQUENCY (f_{SCK}), MHz | | | | | | |
|--------------------|---|-----------|------------------|------------------|------------------|------------------|------------------|
| | 128 f_S | 192 f_S | 256 f_S | 384 f_S | 512 f_S | 768 f_S | 1152 f_S |
| 8 kHz | 1.024 | 1.536 | 2.048 | 3.072 | 4.096 | 6.144 | 9.216 |
| 16 kHz | 2.048 | 3.072 | 4.096 | 6.144 | 8.192 | 12.288 | 18.432 |
| 32 kHz | 4.096 | 6.144 | 8.192 | 12.288 | 16.384 | 24.576 | 36.864 |
| 44.1 kHz | 5.6448 | 8.4672 | 11.2896 | 16.9344 | 22.5792 | 33.8688 | — ⁽¹⁾ |
| 48 kHz | 6.144 | 9.216 | 12.288 | 18.432 | 24.576 | 36.864 | — ⁽¹⁾ |
| 88.2 kHz | 11.2896 | 16.9344 | 22.5792 | 33.8688 | — ⁽¹⁾ | — ⁽¹⁾ | — ⁽¹⁾ |
| 96 kHz | 12.288 | 18.432 | 24.576 | 36.864 | — ⁽¹⁾ | — ⁽¹⁾ | — ⁽¹⁾ |
| 192 kHz | 24.576 | 36.864 | — ⁽¹⁾ | — ⁽¹⁾ | — ⁽¹⁾ | — ⁽¹⁾ | — ⁽¹⁾ |

(1) This system clock frequency is not supported for the given sampling frequency.



T0005A08

(1) $1/128 f_S$, $1/192 f_S$, $1/256 f_S$, $1/384 f_S$, $1/512 f_S$, $1/768 f_S$, or $1/1152 f_S$

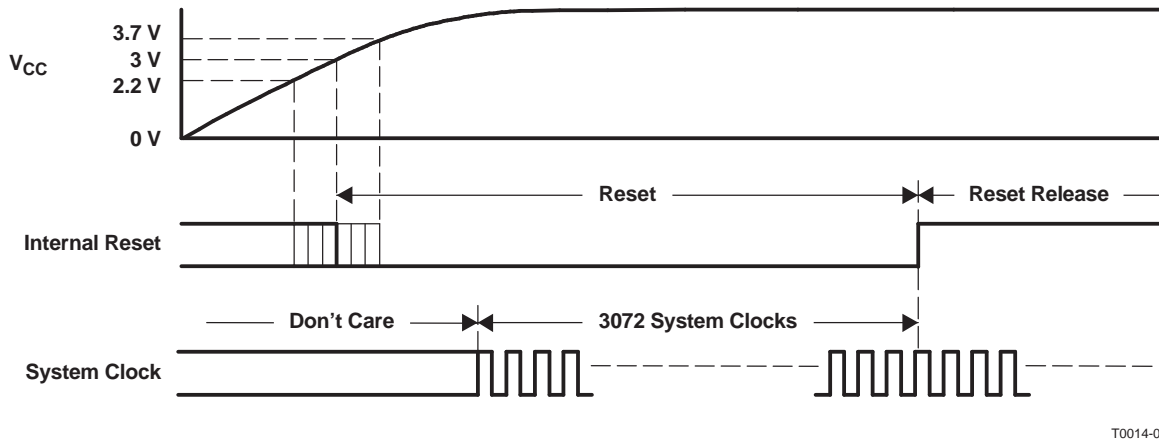
| PARAMETER | | MIN | TYP | MAX | UNIT |
|-------------|-----------------------------------|-----|-----|-----|------|
| $t_w(SCKH)$ | System clock pulse duration, HIGH | 7 | | | ns |
| $t_w(SCKL)$ | System clock pulse duration, LOW | 7 | | | ns |

Figure 20. System Clock Input Timing

Power-On-Reset Functions

The PCM1780/81/82 includes a power-on-reset function. Figure 21 shows the operation of this function. With the system clock active and $V_{CC} > 3\text{ V}$ (typical, 2.2 V to 3.7 V), the power-on-reset function is enabled. The initialization sequence requires 3072 system clocks from the time $V_{CC} > 3\text{ V}$ (typical, 2.2 V to 3.7 V). After the initialization period, the PCM1780/82 is set to its reset default state, as described in the *Mode Control Register* section of this data sheet.

During the reset period (3072 system clocks), the analog output is forced to the common voltage (V_{COM}), or $V_{CC}/2$. After the reset period, the internal register is initialized in the next $1/f_S$ period and if SCK, BCK, and LRCK are provided continuously, the PCM1780/81/82 provides the proper analog output with a group delay corresponding to the input data.



T0014-06

Figure 21. Power-On-Reset Timing

Audio Serial Interface

The audio serial interface for the PCM1780/81/82 consists of a three-wire synchronous serial port. It includes LRCK (pin 8), BCK (pin 7), and DATA (pin 6). BCK is the serial audio bit clock, and it is used to clock the serial data present on DATA into the serial shift register of the audio interface. Serial data is clocked into the PCM1780/81/82 on the rising edge of BCK. LRCK is the serial audio left/right word clock. It is used to latch serial data into the internal registers of the serial audio interface.

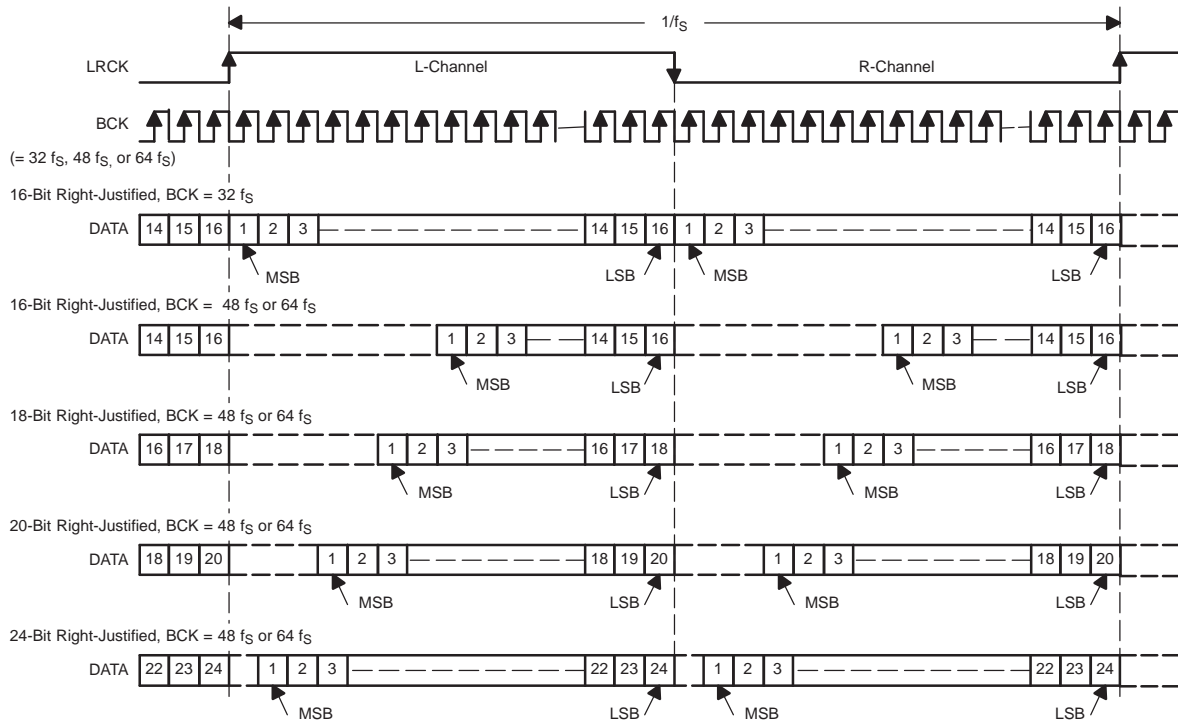
Both LRCK and BCK should be synchronous with the system clock. Ideally, it is recommended that LRCK and BCK be derived from the system clock input, SCK. LRCK is operated at the sampling frequency, f_S . BCK can be operated at 32, 48, or 64 times the sampling frequency.

Internal operation of the PCM1780/81/82 is synchronized with LRCK. Accordingly, internal operation of the device is suspended when the sampling rate clock, LRCK, is changed or SCK and/or BCK is interrupted at least for three bit-clock cycles. If SCK, BCK, and LRCK are provided continuously after this suspended condition, the internal operation is resynchronized automatically within a period of less than $3/f_S$. External resetting is not required.

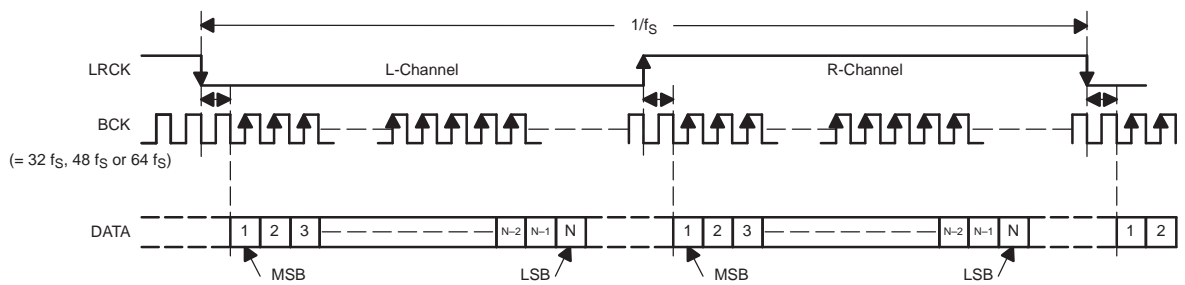
Audio Data Formats and Timing

The PCM1780/82 supports industry-standard audio data formats, including right-justified, I²S, and left-justified. The PCM1781 supports I²S and 16-bit-word, right-justified. The data formats are shown in Figure 22. Data formats are selected for the PCM1780/82 using the format bits, FMT[2:0], located in control register 20, and are selected for the PCM1781 using the FMT pin. The default data format is 24-bit, left-justified. All formats require binary 2s complement, MSB-first audio data. Figure 23 shows a detailed timing diagram for the serial audio interface.

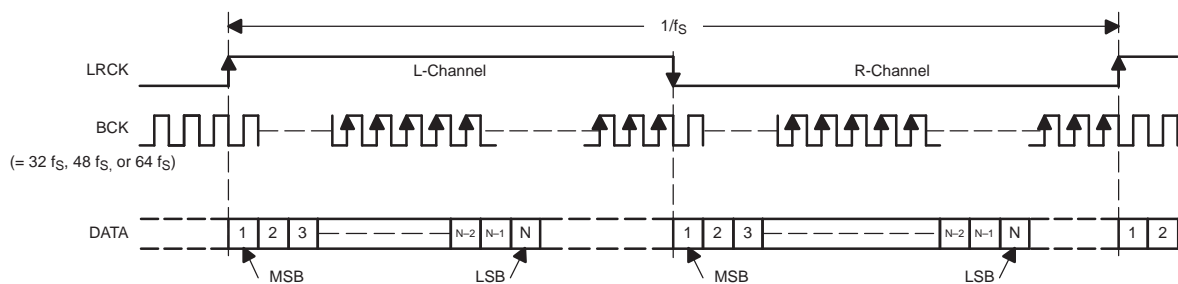
(1) Right-Justified Data Format; L-Channel = HIGH, R-Channel = LOW



(2) I²S Data Format; L-Channel = LOW, R-Channel = HIGH

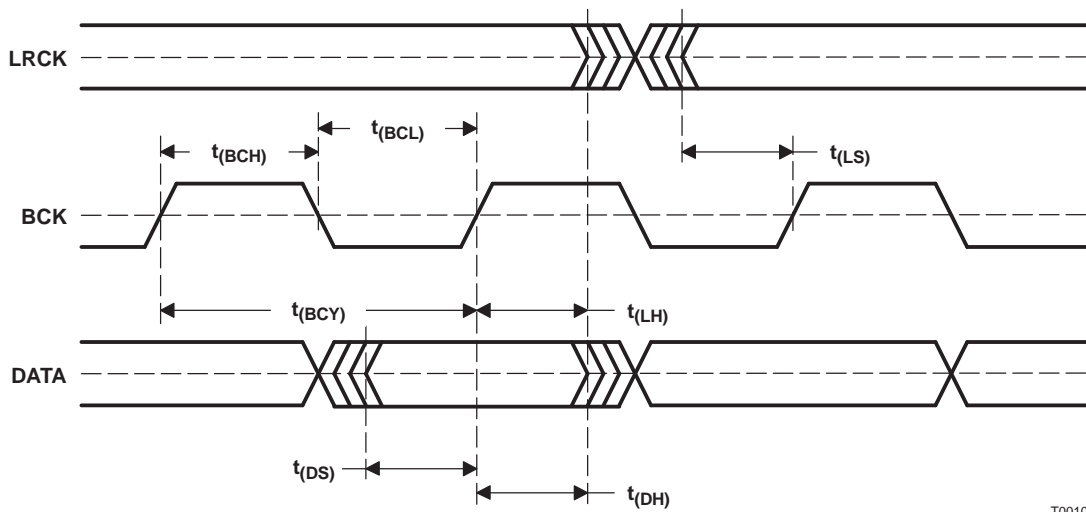


(3) Left-Justified Data Format; L-Channel = HIGH, R-Channel = LOW



T0009-02

Figure 22. Audio Data Input Formats



T0010-03

| PARAMETER | MIN | UNIT |
|---|---|------|
| $t_{(BCY)}$ BCK pulse cycle time | $1/(32 f_S)$, $1/(48 f_S)$, $1/(64 f_S)$ ⁽¹⁾ | |
| $t_{(BCH)}$ BCK pulse duration, HIGH | 35 | ns |
| $t_{(BCL)}$ BCK pulse duration, LOW | 35 | ns |
| $t_{(LS)}$ LRCK setup time to BCK rising edge | 10 | ns |
| $t_{(LH)}$ LRCK hold time to BCK rising edge | 10 | ns |
| $t_{(DS)}$ DATA setup time | 10 | ns |
| $t_{(DH)}$ DATA hold time | 10 | ns |

(1) f_S is the sampling frequency (e.g., 44.1 kHz, 48 kHz, 96 kHz, etc.).

Figure 23. Audio Interface Timing

OVERSAMPLING RATE CONTROL

The PCM1780/81/82 automatically controls the oversampling rate of the delta-sigma D/A converters with the system clock frequency. The oversampling rate is set to 64x oversampling with an 1152- f_S , 768- f_S , or 512- f_S system clock, to 32x oversampling with a 384- f_S or 256- f_S system clock, or to 16x oversampling with a 192- f_S or 128- f_S system clock.

ZERO FLAGS (PCM1780/82)

Zero-Detect Condition

Zero detection for each output channel is independent from the other. If the data for a given channel remains at a 0 level for 1024 sample periods (or LRCK clock periods), a zero-detect condition exists for that channel.

Zero-Flag Outputs

Each channel has a corresponding zero-flag pin, ZEROL (pin 1) or ZEROR (pin 16). Given that a zero-detect condition exists for one or more channels, the zero-flag pins for those channels are set to a logic-1 state. The zero-flag pins can be used to operate external mute circuits, or used as status indicators for a microcontroller, audio signal processor, or other digitally controlled function.

The active polarity of the zero-flag outputs can be inverted by setting the ZREV bit of control register 22 to 1. The reset default is active-high output, or ZREV = 0.

The L-channel and R-channel common zero flag can be selected by setting the AZRO bit of control register 22 to 1. The reset default is for independent L-channel and R-channel zero flags, or AZRO = 0.

On the PCM1782, ZEROL and ZEROR are open-drain outputs.

ZERO FLAG (PCM1781)

The PCM1781 has a zero-flag pin, ZEROA (pin 16). ZEROA is the L-channel and R-channel common zero-flag pin. If the data for L-channel and R-channel remains at a 0 level for 1024 sampling periods (or LRCK clock periods), ZEROA is set to a logic-1 state.

HARDWARE CONTROL (PCM1781)

The digital functions of the PCM1781 are capable of hardware control. [Table 2](#) shows selectable formats, [Table 3](#) shows de-emphasis control, and [Table 4](#) shows muting control.

Table 2. Data Format Selection

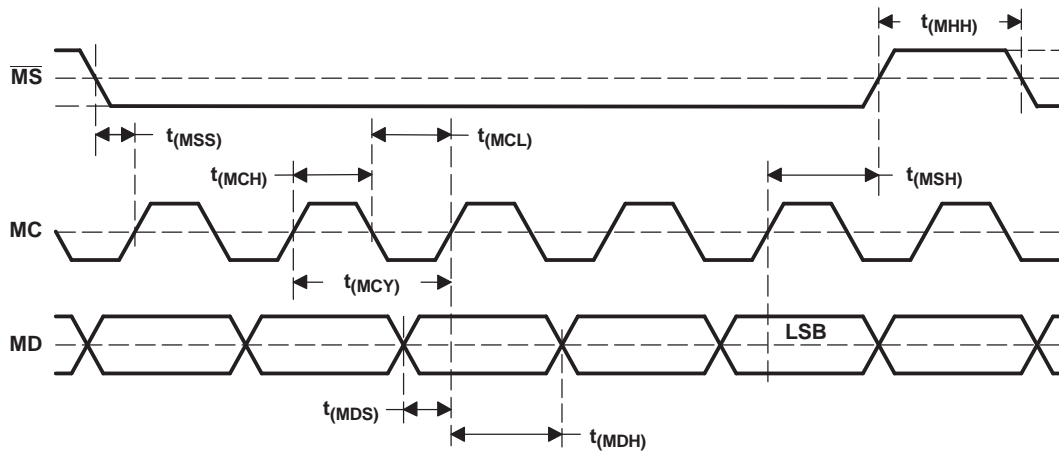
| FMT (PIN 1) | DATA FORMAT |
|-------------|--|
| LOW | 16- to 24-bit, I ² S format |
| HIGH | 16-bit right-justified |

Table 3. De-Emphasis Control

| DEMP1 (PIN 3) | DEMP0 (PIN 2) | DE-EMPHASIS FUNCTION |
|---------------|---------------|-------------------------|
| LOW | LOW | OFF |
| LOW | HIGH | 48-kHz de-emphasis ON |
| HIGH | LOW | 44.1-kHz de-emphasis ON |
| HIGH | HIGH | 32-kHz de-emphasis ON |

Table 4. Mute Control

| MUTE (PIN 4) | MUTE STATUS |
|--------------|-------------|
| LOW | Mute OFF |
| HIGH | Mute ON |



T0013-03

| PARAMETER | | MIN | UNIT |
|-------------|--|----------------------------|------|
| $t_{(MCY)}$ | MC pulse cycle time | 100 | ns |
| $t_{(MCL)}$ | MC low-level time | 50 | ns |
| $t_{(MCH)}$ | MC high-level time | 50 | ns |
| $t_{(MHH)}$ | \overline{MS} high-level time | $3/(256 \times f_S)^{(2)}$ | ns |
| $t_{(MSS)}$ | \overline{MS} falling edge to MC rising edge | 20 | ns |
| $t_{(MSH)}$ | \overline{MS} hold time ⁽¹⁾ | 20 | ns |
| $t_{(MDH)}$ | MD hold time | 15 | ns |
| $t_{(MDS)}$ | MD setup time | 20 | ns |

(1) MC rising edge for LSB to \overline{MS} rising edge

(2) f_S : sampling rate

Figure 26. Control Interface Timing

MODE CONTROL REGISTERS (PCM1780/82)

User-Programmable Mode Controls

The PCM1780/82 includes a number of user-programmable functions, which are accessed via control registers. The registers are programmed using the serial control interface, which was previously discussed in the *Software Control* section of this data sheet. [Table 5](#) lists the available mode control functions, along with their reset default conditions and associated register index.

Register Map

The mode control register map is shown in [Table 6](#). Each register includes an index (or address) indicated by the `IDX[6:0]` bits.

Table 5. User-Programmable Mode Controls

| FUNCTION | RESET DEFAULT | REGISTER | BIT(S) |
|---|----------------------------|-----------|--------------------|
| Digital attenuation control, 0 dB to –63 dB in 0.5-dB steps | 0 dB, no attenuation | 16 and 17 | AT1[7:0], AT2[7:0] |
| Soft mute control | Mute disabled | 18 | MUT[2:0] |
| Oversampling rate control | x64, x32, x16 | 18 | OVER |
| Soft reset control | Reset disabled | 18 | SRST |
| DAC operation control | DAC1 and DAC2 enabled | 19 | DAC[2:1] |
| De-emphasis function control | De-emphasis disabled | 19 | DM12 |
| De-emphasis sample rate selection | 44.1 kHz | 19 | DMF[1:0] |
| Audio data format control | 24-bit, left-justified | 20 | FMT[2:0] |
| Digital filter rolloff control | Sharp rolloff | 20 | FLT |
| Digital attenuation mode select | 0 to –63 dB, 0.5 dB/step | 21 | DAMS |
| Output phase select | Normal Phase | 22 | DREV |
| Zero-flag polarity select | High | 22 | ZREV |
| Zero-flag function select | L-, R-channels independent | 22 | AZRO |

Table 6. Mode Control Register Map

| IDX (B8–B14) | REGISTER | B15 | B14 | B13 | B12 | B11 | B10 | B9 | B8 | B7 | B6 | B5 | B4 | B3 | B2 | B1 | B0 |
|--------------|----------|-----|------|------|------|------|------|------|------|------|------|------|------|------|------|------|------|
| 10h | 16 | 0 | IDX6 | IDX5 | IDX4 | IDX3 | IDX2 | IDX1 | IDX0 | AT17 | AT16 | AT15 | AT14 | AT13 | AT12 | AT11 | AT10 |
| 11h | 17 | 0 | IDX6 | IDX5 | IDX4 | IDX3 | IDX2 | IDX1 | IDX0 | AT27 | AT26 | AT25 | AT24 | AT23 | AT22 | AT21 | AT20 |
| 12h | 18 | 0 | IDX6 | IDX5 | IDX4 | IDX3 | IDX2 | IDX1 | IDX0 | SRST | OVER | RSV | RSV | RSV | RSV | MUT2 | MUT1 |
| 13h | 19 | 0 | IDX6 | IDX5 | IDX4 | IDX3 | IDX2 | IDX1 | IDX0 | RSV | DMF1 | DMF0 | DM12 | RSV | RSV | DAC2 | DAC1 |
| 14h | 20 | 0 | IDX6 | IDX5 | IDX4 | IDX3 | IDX2 | IDX1 | IDX0 | RSV | RSV | FLT | RSV | RSV | FMT2 | FMT1 | FMT0 |
| 15h | 21 | 0 | IDX6 | IDX5 | IDX4 | IDX3 | IDX2 | IDX1 | IDX0 | RSV | RSV | RSV | RSV | RSV | RSV | RSV | DAMS |
| 16h | 22 | 0 | IDX6 | IDX5 | IDX4 | IDX3 | IDX2 | IDX1 | IDX0 | RSV | RSV | RSV | RSV | 0 | AZRO | ZREV | DREV |

Register Definitions

| | | | | | | | | | | | | | | | | |
|-------------|-----|------|------|------|------|------|------|------|------|------|------|------|------|------|------|------|
| | B15 | B14 | B13 | B12 | B11 | B10 | B9 | B8 | B7 | B6 | B5 | B4 | B3 | B2 | B1 | B0 |
| REGISTER 16 | 0 | IDX6 | IDX5 | IDX4 | IDX3 | IDX2 | IDX1 | IDX0 | AT17 | AT16 | AT15 | AT14 | AT13 | AT12 | AT11 | AT10 |
| | B15 | B14 | B13 | B12 | B11 | B10 | B9 | B8 | B7 | B6 | B5 | B4 | B3 | B2 | B1 | B0 |
| REGISTER 17 | 0 | IDX6 | IDX5 | IDX4 | IDX3 | IDX2 | IDX1 | IDX0 | AT27 | AT26 | AT25 | AT24 | AT23 | AT22 | AT21 | AT20 |

ATx[7:0]: Digital Attenuation Level Setting

Where x = 1 or 2, corresponding to the DAC output V_{OUTL} (x = 1) and V_{OUTR} (x = 2)

Default value: 1111 1111b

| ATx[7:0] | DECIMAL VALUE | ATTENUATION LEVEL SETTING | |
|------------|---------------|--------------------------------|--------------------------------|
| | | DAMS = 0 | DAMS = 1 |
| 1111 1111b | 255 | 0 dB, no attenuation (default) | 0 dB, no attenuation (default) |
| 1111 1110b | 254 | –0.5 dB | –1 dB |
| 1111 1101b | 253 | –1 dB | –2 dB |
| : | : | : | : |
| 1001 1100b | 156 | –49.5 dB | –99 dB |
| 1001 1011b | 155 | –50 dB | –100 dB |
| 1001 1010b | 154 | –50.5 dB | Mute |
| : | : | : | : |
| 1000 0010b | 130 | –62.5 dB | Mute |
| 1000 0001b | 129 | –63 dB | Mute |
| 1000 0000b | 128 | Mute | Mute |
| : | : | : | : |
| 0000 0000b | 0 | Mute | Mute |

Each DAC channel (V_{OUTL} or V_{OUTR}) includes a digital attenuation function. The attenuation level can be set from 0 dB to R dB, in S-dB steps. Changes in attenuator levels are made by incrementing or decrementing by one step (S dB) every 8/f_S time interval until the programmed attenuator setting is reached. Alternatively, the attenuation level can be set to infinite attenuation (or mute).

R (range) and S (step) are –63 and 0.5 for DAMS = 0 and –100 and 1 for DAMS = 1, respectively. The DAMS bit is defined in register 21.

The attenuation data for each channel can be set individually. The attenuation level can be calculated using the following formula:

$$\text{Attenuation level (dB)} = S \cdot (\text{ATx}[7:0]_{\text{DEC}} - 255)$$

where ATx[7:0]_{DEC} = 0 through 255. For ATx[7:0]_{DEC} = 0 through 128 with DAMS = 0, or for ATx[7:0]_{DEC} = 0 through 154 with DAMS = 1, the attenuation level is set to infinite attenuation (mute).

| | | | | | | | | | | | | | | | | |
|-------------|-----|------|------|------|------|------|------|------|------|------|-----|-----|-----|-----|------|------|
| | B15 | B14 | B13 | B12 | B11 | B10 | B9 | B8 | B7 | B6 | B5 | B4 | B3 | B2 | B1 | B0 |
| REGISTER 18 | 0 | IDX6 | IDX5 | IDX4 | IDX3 | IDX2 | IDX1 | IDX0 | SRST | OVER | RSV | RSV | RSV | RSV | MUT2 | MUT1 |

NOTE: RSV indicates a reserved bit that should be set to 0.

MUTx: Soft Mute Control

Where $x = 1$ or 2 , corresponding to the DAC output V_{OUTL} ($x = 1$) and V_{OUTR} ($x = 2$).

Default value: 0

| | |
|----------|-------------------------|
| MUTx = 0 | Mute disabled (default) |
| MUTx = 1 | Mute enabled |

The mute bits, MUT1 and MUT2, are used to enable or disable the soft mute function for the corresponding DAC outputs, V_{OUTL} and V_{OUTR} . The soft mute function is incorporated into the digital attenuators. When mute is disabled (MUTx = 0), the attenuator and DAC operate normally. When mute is enabled by setting MUTx = 1, the digital attenuator for the corresponding output is decreased from the current setting to infinite attenuation, one attenuator step (S dB) for every $8/f_S$ seconds. This provides pop-free muting of the DAC output. The step size, S, is 0.5 dB for DAMS = 0 and 1 dB for DAMS = 1.

By setting MUTx = 0, the attenuator is increased one step for every $8/f_S$ seconds to the previously programmed attenuation level.

OVER: Oversampling Rate Control

Default value: 0

System clock frequency = $512 f_S$, $768 f_S$, or $1152 f_S$

| | |
|----------|---|
| OVER = 0 | x64 oversampling (default) |
| OVER = 1 | x128 oversampling (applicable only if sampling clock frequency ≤ 24 kHz) |

System clock frequency = $256 f_S$ or $384 f_S$

| | |
|----------|--|
| OVER = 0 | x32 oversampling (default) |
| OVER = 1 | x64 oversampling (applicable only if sampling clock frequency ≤ 48 kHz) |

System clock frequency = $128 f_S$, $192 f_S$

| | |
|----------|--|
| OVER = 0 | x16 oversampling (default) |
| OVER = 1 | x32 oversampling (applicable only if sampling clock frequency ≤ 96 kHz) |

The OVER bit is used to control the oversampling rate of the delta-sigma D/A converters.

Setting OVER = 1 is recommended under the following conditions:

- System clock frequency = $512 f_S$, $768 f_S$, or $1152 f_S$, and sampling clock frequency ≤ 24 kHz
- System clock frequency = $256 f_S$ or $384 f_S$ and sampling clock frequency ≤ 48 kHz
- System clock frequency = $128 f_S$ or $192 f_S$ and sampling clock frequency ≤ 96 kHz

SRST: Reset

Default value: 0

| | |
|----------|--------------------------|
| SRST = 0 | Reset disabled (default) |
| SRST = 1 | Reset enabled |

The SRST bit is used to enable or disable the soft reset function. The operation is the same as for the power-on-reset function with the exception of the reset period, which is 1024 system clocks for the SRST function. All registers are initialized.

| | | | | | | | | | | | | | | | | |
|-------------|-----|------|------|------|------|------|------|------|-----|------|------|------|-----|-----|------|------|
| | B15 | B14 | B13 | B12 | B11 | B10 | B9 | B8 | B7 | B6 | B5 | B4 | B3 | B2 | B1 | B0 |
| REGISTER 19 | 0 | IDX6 | IDX5 | IDX4 | IDX3 | IDX2 | IDX1 | IDX0 | RSV | DMF1 | DMF0 | DM12 | RSV | RSV | DAC2 | DAC1 |

NOTE: RSV indicates a reserved bit that should be set to 0.

DACx: DAC Operation Control

Where x = 1 or 2, corresponding to the DAC output V_{OUTL} (x = 1) or V_{OUTR} (x = 2).

Default value: 0

| | |
|----------|---------------------------------|
| DACx = 0 | DAC operation enabled (default) |
| DACx = 1 | DAC operation disabled |

The DAC operation controls are used to enable and disable the DAC outputs, V_{OUTL} and V_{OUTR} . When DACx = 0, the corresponding output generates the audio waveform dictated by the data present on the DATA pin. When DACx = 1, the corresponding output is set to the dc common voltage (V_{COM}), equal to $V_{CC}/2$.

DM12: Digital De-Emphasis Function Control

Default value: 0

| | |
|----------|--------------------------------|
| DM12 = 0 | De-emphasis disabled (default) |
| DM12 = 1 | De-emphasis enabled |

The DM12 bit is used to enable or disable the digital de-emphasis function. Refer to the plots shown in the *Typical Performance Curves* section of this data sheet.

DMF[1:0]: Sampling Frequency Selection for the De-Emphasis Function

Default value: 00

| DMF[1:0] | De-Emphasis Sample Rate Selection |
|----------|-----------------------------------|
| 00 | 44.1 kHz (default) |
| 01 | 48 kHz |
| 10 | 32 kHz |
| 11 | Reserved |

The DMF[1:0] bits are used to select the sampling frequency used for the digital de-emphasis function when it is enabled.

| | B15 | B14 | B13 | B12 | B11 | B10 | B9 | B8 | B7 | B6 | B5 | B4 | B3 | B2 | B1 | B0 |
|-------------|-----|------|------|------|------|------|------|------|-----|-----|-----|-----|-----|------|------|------|
| REGISTER 20 | 0 | IDX6 | IDX5 | IDX4 | IDX3 | IDX2 | IDX1 | IDX0 | RSV | RSV | FLT | RSV | RSV | FMT2 | FMT1 | FMT0 |

NOTE: RSV indicates a reserved bit that should be set to 0.

FMT[2:0]: Audio Interface Data Format

Default value: 101

| FMT[2:0] | Audio Data Format Selection |
|----------|--|
| 000 | 24-bit right-justified format, standard data |
| 001 | 20-bit right-justified format, standard data |
| 010 | 18-bit right-justified format, standard data |
| 011 | 16-bit right-justified format, standard data |
| 100 | I ² S format, 16 to 24 bits |
| 101 | Left-justified format, 16 to 24 bits (default) |
| 110 | Reserved |
| 111 | Reserved |

The FMT[2:0] bits are used to select the data format for the serial audio interface. The preceding table shows the available format options.

FLT: Digital Filter Rolloff Control

Default value: 0

| | |
|---------|-------------------------|
| FLT = 0 | Sharp rolloff (default) |
| FLT = 1 | Slow rolloff |

The FLT bit allows users to select the digital filter rolloff that is best suited to their application. Two filter rolloff selections are available: sharp and slow. The filter responses for these selections are shown in the *Typical Performance Curves* section of this data sheet

| | B15 | B14 | B13 | B12 | B11 | B10 | B9 | B8 | B7 | B6 | B5 | B4 | B3 | B2 | B1 | B0 |
|-------------|-----|------|------|------|------|------|------|------|-----|-----|-----|-----|-----|-----|-----|------|
| REGISTER 21 | 0 | IDX6 | IDX5 | IDX4 | IDX3 | IDX2 | IDX1 | IDX0 | RSV | RSV | RSV | RSV | RSV | RSV | RSV | DAMS |

NOTE: RSV indicates a reserved bit that should be set to 0.

DAMS: Digital Attenuation Mode Select

Default value: 0

| | |
|----------|--|
| DAMS = 0 | Fine step, 0.5 dB/step for 0 to –63 dB range (default) |
| DAMS = 1 | Wide range, 1 dB/step for 0 to –100 dB range |

The DAMS bit is used to select the digital attenuation mode.

| | B15 | B14 | B13 | B12 | B11 | B10 | B9 | B8 | B7 | B6 | B5 | B4 | B3 | B2 | B1 | B0 |
|-------------|-----|------|------|------|------|------|------|------|-----|-----|-----|-----|----|------|------|------|
| REGISTER 22 | 0 | IDX6 | IDX5 | IDX4 | IDX3 | IDX2 | IDX1 | IDX0 | RSV | RSV | RSV | RSV | 0 | AZRO | ZREV | DREV |

NOTE: RSV indicates a reserved bit that should be set to 0.

DREV: Output Phase Select

Default value: 0

| | |
|----------|-------------------------|
| DREV = 0 | Normal output (default) |
| DREV = 1 | Inverted output |

The DREV bit allows the user to control the phase of the analog output signal.

ZREV: Zero-Flag Polarity Select

Default value: 0

| | |
|----------|--|
| ZREV = 0 | Zero-flag pins HIGH at a zero detect (default) |
| ZREV = 1 | Zero-flag pins LOW at a zero detect |

The ZREV bit allows the user to select the polarity of the zero-flag pins.

AZRO: Zero Flag Function Select

Default value: 0

| | |
|----------|---|
| AZRO = 0 | Pin 1: ZEROL; zero-flag output for L-channel Pin 16: ZEROR; zero-flag output for R-channel |
| AZRO = 1 | Pin 1: NA; not assigned Pin 16: ZEROA; zero-flag output for L-/R-channel |

The AZRO bit allows the user to select the function of zero-flag pins.

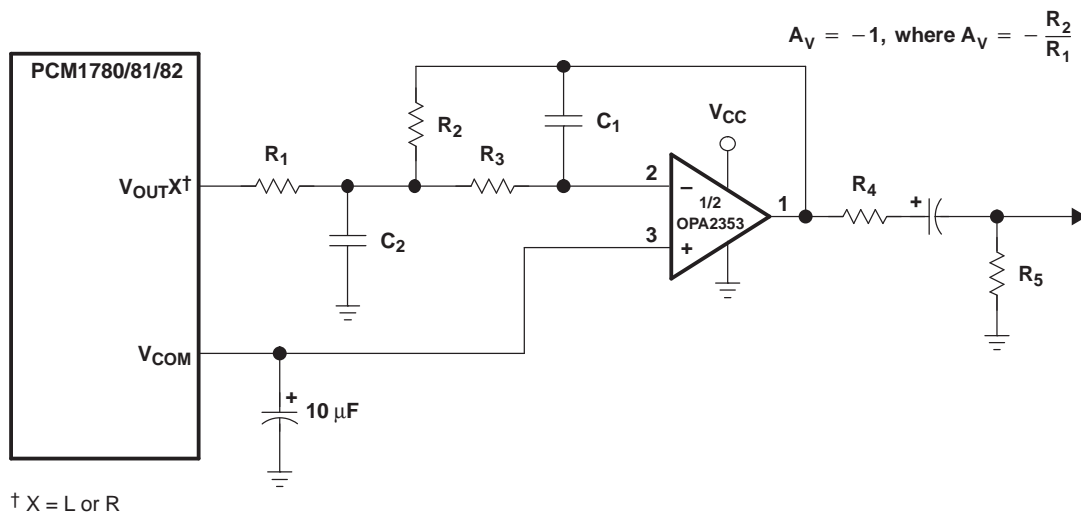
ANALOG OUTPUTS

The PCM1780/81/82 includes two independent output channels, V_{OUTL} and V_{OUTR} . These are unbalanced outputs, each capable of driving 3.9 V_{p-p} typical into a 5-k Ω ac-coupled load. The internal output amplifiers for V_{OUTL} and V_{OUTR} are biased to the dc common voltage, equal to $0.5 V_{CC}$.

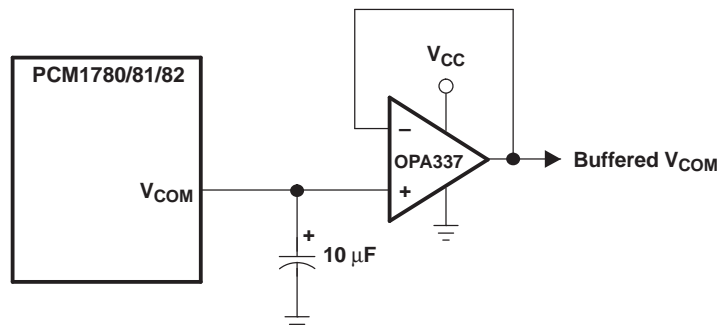
The output amplifiers include an RC continuous-time filter, which helps to reduce the out-of-band noise energy present at the DAC outputs due to the noise-shaping characteristics of the PCM1780/81/82 delta-sigma D/A converters. The frequency response of this filter is shown as ANALOG FILTER in the *Typical Performance Curves* section. By itself, this filter is not enough to attenuate the out-of-band noise to an acceptable level for many applications. An external low-pass filter is required to provide sufficient out-of-band noise rejection. Further discussion of DAC post-filter circuits is provided in the *Application Information* section of this data sheet.

V_{COM} Output

One unbuffered common voltage output pin, V_{COM} (pin 13), is brought out for decoupling purposes. This pin is nominally biased to the dc common voltage, equal to $V_{CC}/2$. This pin can be used to bias external circuits. [Figure 27](#) shows an example of using the V_{COM} pin for external biasing applications.



(a) Using V_{COM} to Bias a Single-Supply Filter Stage



(b) Using a Voltage Follower to Buffer V_{COM} When Biasing Multiple Nodes

S0054-01

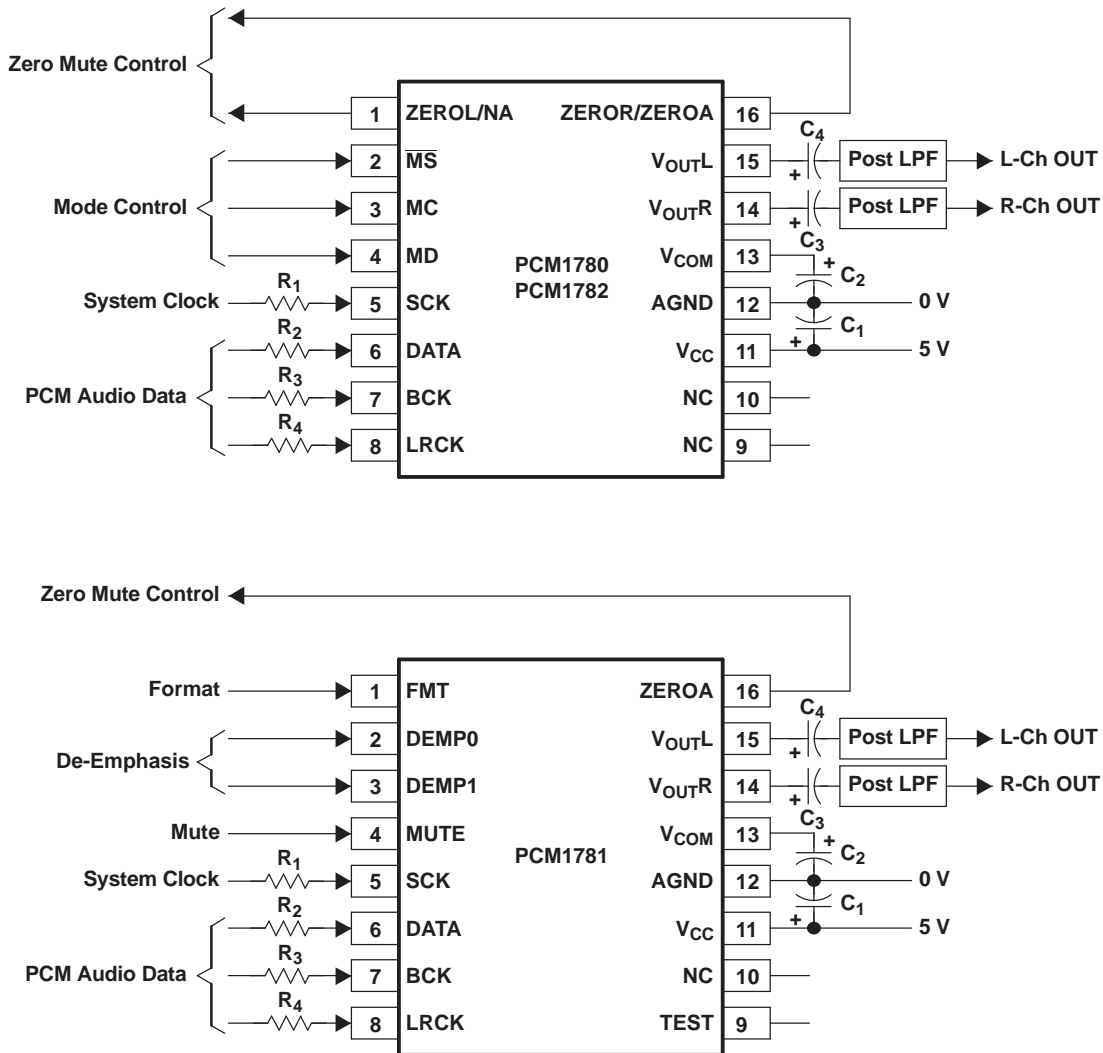
Figure 27. Biasing External Circuits Using the V_{COM} Pin

APPLICATION INFORMATION

Connection Diagrams

A basic connection diagram is shown in Figure 28, with the necessary power supply bypassing and decoupling components. TI recommends using the component values shown in Figure 28 for all designs.

The use of series resistors (22 Ω to 100 Ω) is recommended for the SCK, LRCK, BCK, and DATA inputs. The series resistor combines with the stray PCB and device input capacitance to form a low-pass filter which reduces high-frequency noise emissions and helps to dampen glitches and ringing present on clock and data lines.



- C₁: 0.1-μF Ceramic and 10-μF Electrolytic
- C₂: 10-μF Electrolytic
- C₃, C₄: 4.7-μF to 10-μF Electrolytic
- R₁-R₄: 22 Ω to 100 Ω

S0055-01

Figure 28. Basic Connection Diagram

APPLICATION INFORMATION (continued)

Power Supplies and Grounding

The PCM1780/81/82 requires a 5-V supply for V_{CC} .

Proper power supply bypassing is shown in [Figure 28](#). The 0.1- μ F ceramic capacitor and the 10- μ F electrolytic capacitor are recommended.

D/A Output Filter Circuits

Delta-sigma D/A converters use noise-shaping techniques to improve in-band signal-to-noise ratio (SNR) performance at the expense of generating increased out-of-band noise above the Nyquist frequency, or $f_s/2$. The out-of-band noise must be low-pass filtered in order to provide optimal converter performance. This is accomplished by a combination of on-chip and external low-pass filtering.

[Figure 27\(a\)](#) and [Figure 29](#) show the recommended external low-pass active filter circuits for single- and dual-supply applications. These circuits are second-order Butterworth filters using the multiple feedback (MFB) circuit arrangement, which reduces sensitivity to passive component variations over frequency and temperature. For more information regarding MFB active filter design, see *Dynamic Performance Testing of Digital Audio D/A Converters* (SBAA055), available from the TI Web site at <http://www.ti.com>.

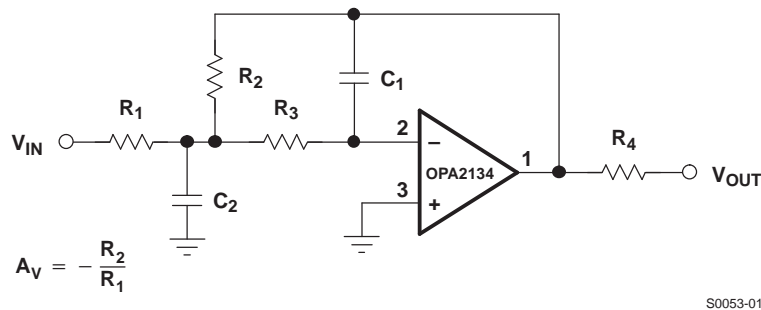


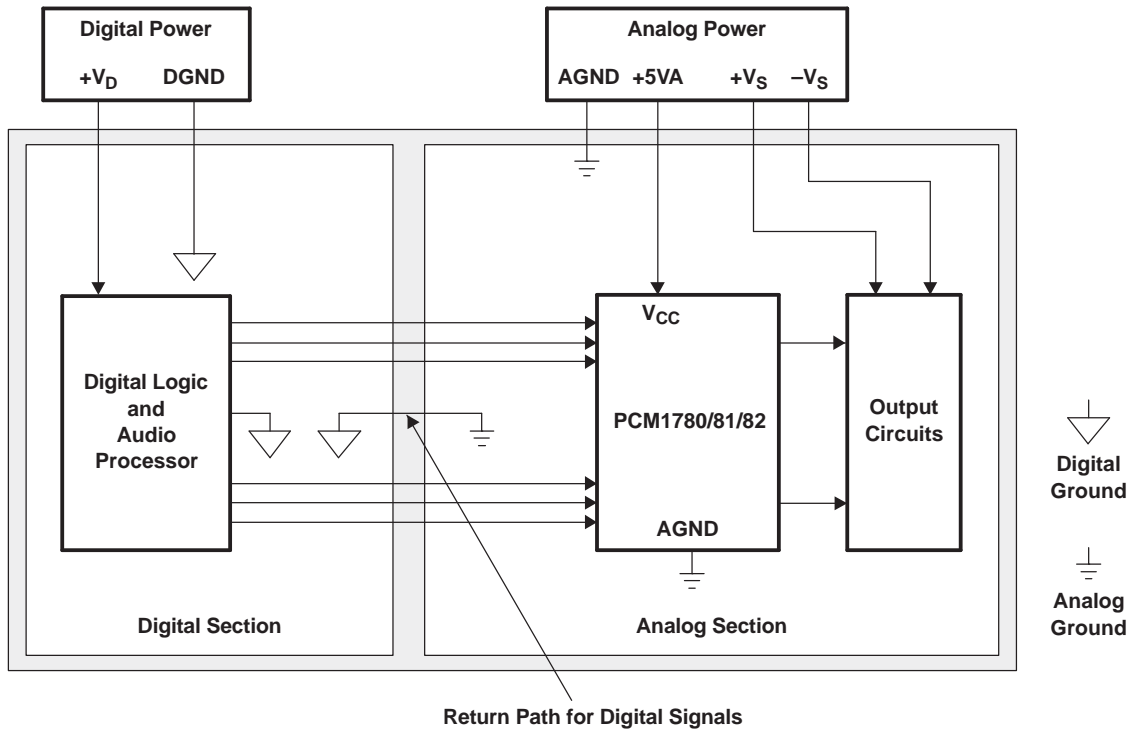
Figure 29. Dual-Supply Filter Circuit

PCB LAYOUT GUIDELINES

A typical PCB floor plan for the PCM1780/81/82 is shown in [Figure 30](#). A ground plane is recommended, with the analog and digital sections being isolated from one another using a split or cut in the circuit board. The PCM1780/81/82 should be oriented with the digital I/O pins facing the ground plane split/cut to allow for short, direct connections to the digital audio interface and control signals originating from the digital section of the board.

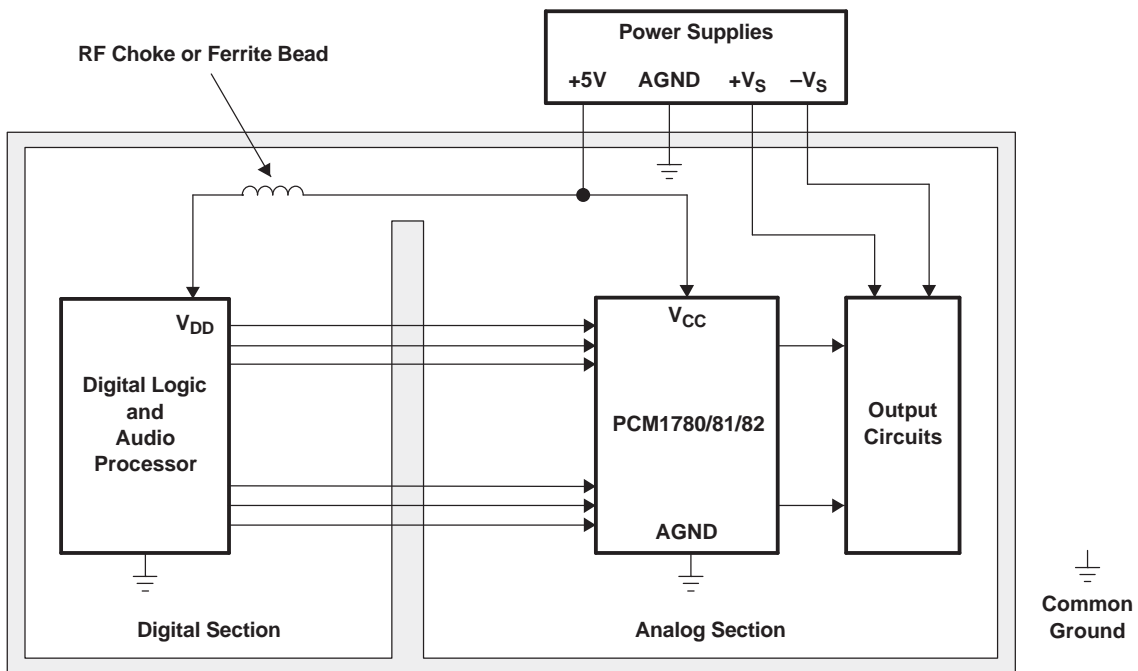
Separate power supplies are recommended for the digital and analog sections of the board. This prevents the switching noise present on the digital supply from contaminating the analog power supply and degrading the dynamic performance of the PCM1780/81/82. In cases where a common 5-V supply must be used for the analog and digital sections, an inductance (RF choke, ferrite bead) should be placed between the analog and digital 5-V supply connections to avoid coupling of the digital switching noise into the analog circuitry. [Figure 31](#) shows the recommended approach for single-supply applications.

APPLICATION INFORMATION (continued)



B0031-01

Figure 30. Recommended PCB Layout



B0032-01

Figure 31. Single-Supply PCB Layout

PACKAGING INFORMATION

| Orderable Device | Status ⁽¹⁾ | Package Type | Package Drawing | Pins | Package Qty | Eco Plan ⁽²⁾ | Lead/ Ball Finish | MSL Peak Temp ⁽³⁾ | Samples (Requires Login) |
|------------------|-----------------------|--------------|-----------------|------|-------------|----------------------------|----------------------|------------------------------|-----------------------------|
| PCM1780DBQ | ACTIVE | SSOP | DBQ | 16 | 75 | Green (RoHS & no Sb/Br) | CU NIPDAU | Level-1-260C-UNLIM | |
| PCM1780DBQG4 | ACTIVE | SSOP | DBQ | 16 | 75 | Green (RoHS & no Sb/Br) | CU NIPDAU | Level-1-260C-UNLIM | |
| PCM1780DBQR | ACTIVE | SSOP | DBQ | 16 | 2000 | Green (RoHS & no Sb/Br) | CU NIPDAU | Level-1-260C-UNLIM | |
| PCM1780DBQRG4 | ACTIVE | SSOP | DBQ | 16 | 2000 | Green (RoHS & no Sb/Br) | CU NIPDAU | Level-1-260C-UNLIM | |
| PCM1781DBQ | ACTIVE | SSOP | DBQ | 16 | 75 | Green (RoHS & no Sb/Br) | CU NIPDAU | Level-1-260C-UNLIM | |
| PCM1781DBQG4 | ACTIVE | SSOP | DBQ | 16 | 75 | Green (RoHS & no Sb/Br) | CU NIPDAU | Level-1-260C-UNLIM | |
| PCM1781DBQR | ACTIVE | SSOP | DBQ | 16 | 2000 | Green (RoHS & no Sb/Br) | CU NIPDAU | Level-1-260C-UNLIM | |
| PCM1781DBQRG4 | ACTIVE | SSOP | DBQ | 16 | 2000 | Green (RoHS & no Sb/Br) | CU NIPDAU | Level-1-260C-UNLIM | |
| PCM1782DBQ | ACTIVE | SSOP | DBQ | 16 | 75 | Green (RoHS & no Sb/Br) | CU NIPDAU | Level-1-260C-UNLIM | |
| PCM1782DBQG4 | ACTIVE | SSOP | DBQ | 16 | 75 | Green (RoHS & no Sb/Br) | CU NIPDAU | Level-1-260C-UNLIM | |
| PCM1782DBQR | ACTIVE | SSOP | DBQ | 16 | 2000 | Green (RoHS & no Sb/Br) | CU NIPDAU | Level-1-260C-UNLIM | |
| PCM1782DBQRG4 | ACTIVE | SSOP | DBQ | 16 | 2000 | Green (RoHS & no Sb/Br) | CU NIPDAU | Level-1-260C-UNLIM | |

⁽¹⁾ The marketing status values are defined as follows:

ACTIVE: Product device recommended for new designs.

LIFEBUY: TI has announced that the device will be discontinued, and a lifetime-buy period is in effect.

NRND: Not recommended for new designs. Device is in production to support existing customers, but TI does not recommend using this part in a new design.

PREVIEW: Device has been announced but is not in production. Samples may or may not be available.

OBSOLETE: TI has discontinued the production of the device.

⁽²⁾ Eco Plan - The planned eco-friendly classification: Pb-Free (RoHS), Pb-Free (RoHS Exempt), or Green (RoHS & no Sb/Br) - please check <http://www.ti.com/productcontent> for the latest availability information and additional product content details.

TBD: The Pb-Free/Green conversion plan has not been defined.

Pb-Free (RoHS): TI's terms "Lead-Free" or "Pb-Free" mean semiconductor products that are compatible with the current RoHS requirements for all 6 substances, including the requirement that lead not exceed 0.1% by weight in homogeneous materials. Where designed to be soldered at high temperatures, TI Pb-Free products are suitable for use in specified lead-free processes.

Pb-Free (RoHS Exempt): This component has a RoHS exemption for either 1) lead-based flip-chip solder bumps used between the die and package, or 2) lead-based die adhesive used between the die and leadframe. The component is otherwise considered Pb-Free (RoHS compatible) as defined above.

Green (RoHS & no Sb/Br): TI defines "Green" to mean Pb-Free (RoHS compatible), and free of Bromine (Br) and Antimony (Sb) based flame retardants (Br or Sb do not exceed 0.1% by weight in homogeneous material)

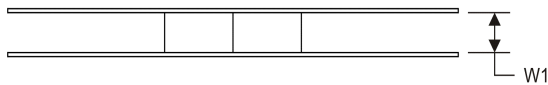
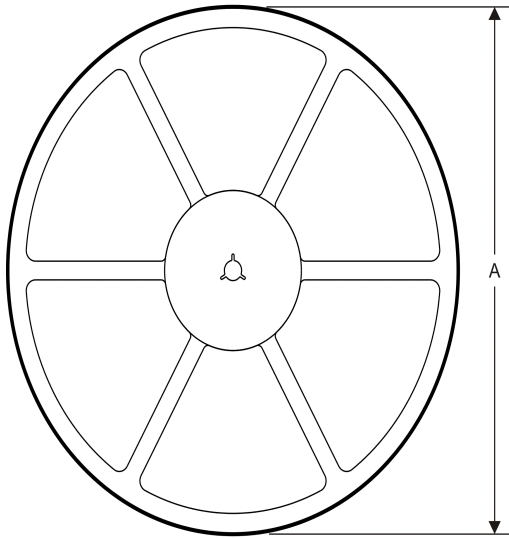
⁽³⁾ MSL, Peak Temp. -- The Moisture Sensitivity Level rating according to the JEDEC industry standard classifications, and peak solder temperature.

Important Information and Disclaimer: The information provided on this page represents TI's knowledge and belief as of the date that it is provided. TI bases its knowledge and belief on information provided by third parties, and makes no representation or warranty as to the accuracy of such information. Efforts are underway to better integrate information from third parties. TI has taken and continues to take reasonable steps to provide representative and accurate information but may not have conducted destructive testing or chemical analysis on incoming materials and chemicals. TI and TI suppliers consider certain information to be proprietary, and thus CAS numbers and other limited information may not be available for release.

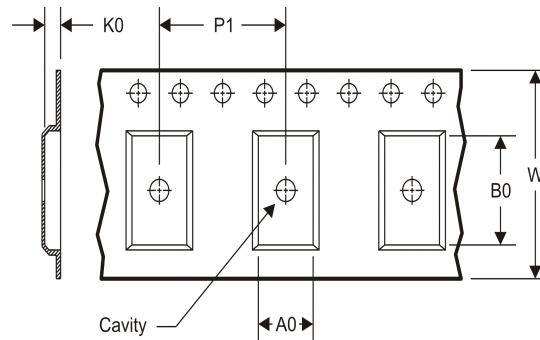
In no event shall TI's liability arising out of such information exceed the total purchase price of the TI part(s) at issue in this document sold by TI to Customer on an annual basis.

TAPE AND REEL INFORMATION

REEL DIMENSIONS



TAPE DIMENSIONS



| | |
|----|---|
| A0 | Dimension designed to accommodate the component width |
| B0 | Dimension designed to accommodate the component length |
| K0 | Dimension designed to accommodate the component thickness |
| W | Overall width of the carrier tape |
| P1 | Pitch between successive cavity centers |

TAPE AND REEL INFORMATION

*All dimensions are nominal

| Device | Package Type | Package Drawing | Pins | SPQ | Reel Diameter (mm) | Reel Width W1 (mm) | A0 (mm) | B0 (mm) | K0 (mm) | P1 (mm) | W (mm) | Pin1 Quadrant |
|-------------|--------------|-----------------|------|------|--------------------|--------------------|---------|---------|---------|---------|--------|---------------|
| PCM1780DBQR | SSOP | DBQ | 16 | 2000 | 330.0 | 12.4 | 6.4 | 5.2 | 2.1 | 8.0 | 12.0 | Q1 |
| PCM1781DBQR | SSOP | DBQ | 16 | 2000 | 330.0 | 12.4 | 6.4 | 5.2 | 2.1 | 8.0 | 12.0 | Q1 |
| PCM1782DBQR | SSOP | DBQ | 16 | 2000 | 330.0 | 12.4 | 6.4 | 5.2 | 2.1 | 8.0 | 12.0 | Q1 |

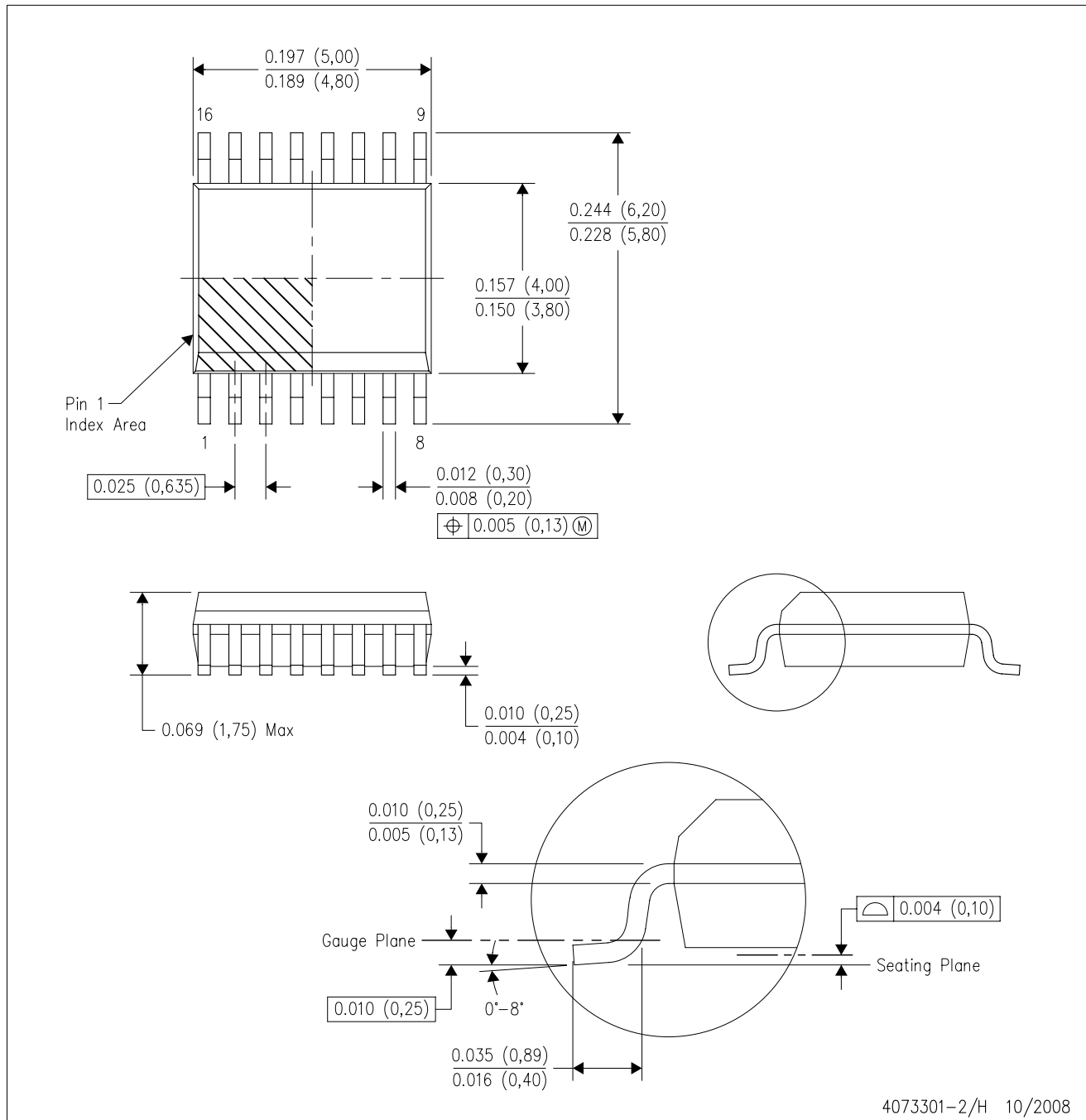
TAPE AND REEL BOX DIMENSIONS


*All dimensions are nominal

| Device | Package Type | Package Drawing | Pins | SPQ | Length (mm) | Width (mm) | Height (mm) |
|-------------|--------------|-----------------|------|------|-------------|------------|-------------|
| PCM1780DBQR | SSOP | DBQ | 16 | 2000 | 367.0 | 367.0 | 35.0 |
| PCM1781DBQR | SSOP | DBQ | 16 | 2000 | 367.0 | 367.0 | 35.0 |
| PCM1782DBQR | SSOP | DBQ | 16 | 2000 | 367.0 | 367.0 | 35.0 |

DBQ (R-PDSO-G16)

PLASTIC SMALL-OUTLINE PACKAGE



- NOTES:
- A. All linear dimensions are in inches (millimeters).
 - B. This drawing is subject to change without notice.
 - C. Body dimensions do not include mold flash or protrusion not to exceed 0.006 (0,15) per side.
 - D. Falls within JEDEC MO-137 variation AB.

IMPORTANT NOTICE

Texas Instruments Incorporated and its subsidiaries (TI) reserve the right to make corrections, enhancements, improvements and other changes to its semiconductor products and services per JESD46C and to discontinue any product or service per JESD48B. Buyers should obtain the latest relevant information before placing orders and should verify that such information is current and complete. All semiconductor products (also referred to herein as "components") are sold subject to TI's terms and conditions of sale supplied at the time of order acknowledgment.

TI warrants performance of its components to the specifications applicable at the time of sale, in accordance with the warranty in TI's terms and conditions of sale of semiconductor products. Testing and other quality control techniques are used to the extent TI deems necessary to support this warranty. Except where mandated by applicable law, testing of all parameters of each component is not necessarily performed.

TI assumes no liability for applications assistance or the design of Buyers' products. Buyers are responsible for their products and applications using TI components. To minimize the risks associated with Buyers' products and applications, Buyers should provide adequate design and operating safeguards.

TI does not warrant or represent that any license, either express or implied, is granted under any patent right, copyright, mask work right, or other intellectual property right relating to any combination, machine, or process in which TI components or services are used. Information published by TI regarding third-party products or services does not constitute a license to use such products or services or a warranty or endorsement thereof. Use of such information may require a license from a third party under the patents or other intellectual property of the third party, or a license from TI under the patents or other intellectual property of TI.

Reproduction of significant portions of TI information in TI data books or data sheets is permissible only if reproduction is without alteration and is accompanied by all associated warranties, conditions, limitations, and notices. TI is not responsible or liable for such altered documentation. Information of third parties may be subject to additional restrictions.

Resale of TI components or services with statements different from or beyond the parameters stated by TI for that component or service voids all express and any implied warranties for the associated TI component or service and is an unfair and deceptive business practice. TI is not responsible or liable for any such statements.

Buyer acknowledges and agrees that it is solely responsible for compliance with all legal, regulatory and safety-related requirements concerning its products, and any use of TI components in its applications, notwithstanding any applications-related information or support that may be provided by TI. Buyer represents and agrees that it has all the necessary expertise to create and implement safeguards which anticipate dangerous consequences of failures, monitor failures and their consequences, lessen the likelihood of failures that might cause harm and take appropriate remedial actions. Buyer will fully indemnify TI and its representatives against any damages arising out of the use of any TI components in safety-critical applications.

In some cases, TI components may be promoted specifically to facilitate safety-related applications. With such components, TI's goal is to help enable customers to design and create their own end-product solutions that meet applicable functional safety standards and requirements. Nonetheless, such components are subject to these terms.

No TI components are authorized for use in FDA Class III (or similar life-critical medical equipment) unless authorized officers of the parties have executed a special agreement specifically governing such use.

Only those TI components which TI has specifically designated as military grade or "enhanced plastic" are designed and intended for use in military/aerospace applications or environments. Buyer acknowledges and agrees that any military or aerospace use of TI components which have **not** been so designated is solely at the Buyer's risk, and that Buyer is solely responsible for compliance with all legal and regulatory requirements in connection with such use.

TI has specifically designated certain components which meet ISO/TS16949 requirements, mainly for automotive use. Components which have not been so designated are neither designed nor intended for automotive use; and TI will not be responsible for any failure of such components to meet such requirements.

Products

| | |
|------------------------|--|
| Audio | www.ti.com/audio |
| Amplifiers | amplifier.ti.com |
| Data Converters | dataconverter.ti.com |
| DLP® Products | www.dlp.com |
| DSP | dsp.ti.com |
| Clocks and Timers | www.ti.com/clocks |
| Interface | interface.ti.com |
| Logic | logic.ti.com |
| Power Mgmt | power.ti.com |
| Microcontrollers | microcontroller.ti.com |
| RFID | www.ti-rfid.com |
| OMAP Mobile Processors | www.ti.com/omap |
| Wireless Connectivity | www.ti.com/wirelessconnectivity |

Applications

| | |
|-------------------------------|--|
| Automotive and Transportation | www.ti.com/automotive |
| Communications and Telecom | www.ti.com/communications |
| Computers and Peripherals | www.ti.com/computers |
| Consumer Electronics | www.ti.com/consumer-apps |
| Energy and Lighting | www.ti.com/energy |
| Industrial | www.ti.com/industrial |
| Medical | www.ti.com/medical |
| Security | www.ti.com/security |
| Space, Avionics and Defense | www.ti.com/space-avionics-defense |
| Video and Imaging | www.ti.com/video |

TI E2E Community e2e.ti.com