



Description

The Redington Model 722 provides an AC Hour Meter with an operating range of 90-240VAC ($\pm 10\%$) 50/60 Hz. You no longer require two separate meters, one for 115VAC and one for 230VAC. Models are available in the standard industry housings, 2-Hole Rectangular, Flush-Rectangular, Flush-Round and 3-Hole Round. Models 722-0001 and 722-0002 fit a panel opening of 1.45" X 0.95" [36.8mm X 24.1mm]. The Flush-Round Model 722-0003 and 3-Hole Model 722-0004 have a panel opening of 2.0" [50.6mm]. The Model 722 quartz time base insures accurate long-term time keeping. The Totally Sealed case protects against the environment and provides years of reliable service. Model 722-0004, 3-Hole mount, is NEMA 4X,12 rated when mounted with optional gasket.

Features

- Operating Voltage 90-240VAC 50/60Hz
- Totally Sealed
- UL/CSA Recognized, CE Compliant
- 6 Figure, 99999.9
- Quartz Accuracy

Options

- Wire Leads
- 3-Hole Mount Gasket Kit (part# 5003-007S)
(For NEMA 4X, 12 Rating)

Specifications

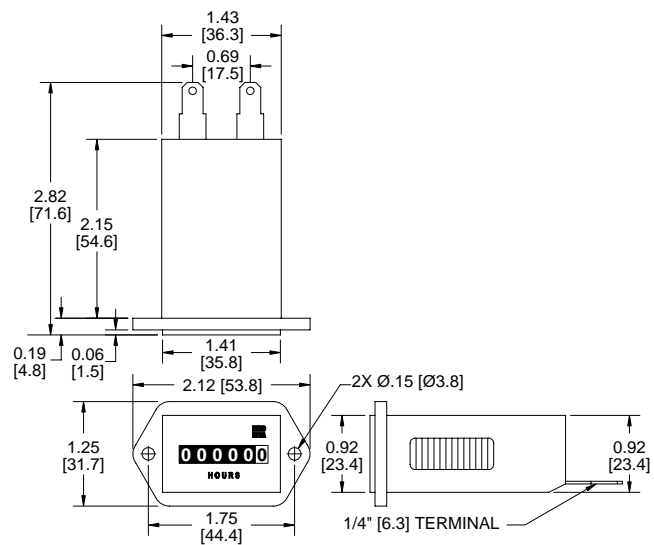
Figures:	6 - digits, 0.125" [3.2mm] 99999.9 Hours - white on black Tenths - red on white	Accuracy:	± 0.02 over entire range
Reset:	Non-reset	Case material:	Black Polymer
Voltage:	90-240VAC ($\pm 10\%$)	Agency Approvals:	UL/CSA recognized, CE compliant
Frequency:	50/60Hz	Environmental:	Totally Sealed (All models)
Power:	Less than 0.6 watts	Front Panel:	Model: 722-0004, NEMA 4X, 12 rated with optional gasket (part# 5003-007S)
Mounting:	Clip or Mounting holes	Temperature:	-40°F to +185°F [-40°C to + 85°C]
Termination:	¼" [6.3mm] spade terminals	Vibration:	10-75 Hz @ 1 to 8g's
Weight:	2 oz [57 g]		

Models

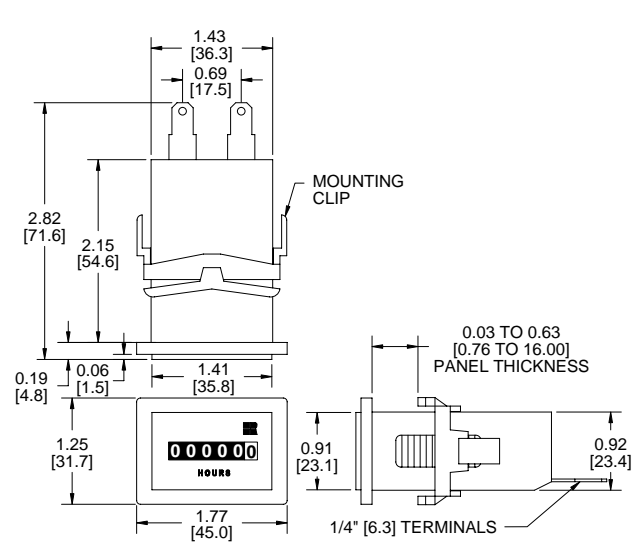
Description

722-0001	2-Hole Rectangular, 90-240VAC 50/60Hz, ¼" [6.3mm] spade terminals, Hours & 1/10's
722-0002	Flush-Rectangular, 90-240VAC 50/60Hz, ¼" [6.3mm] spade terminals, Hours & 1/10's
722-0003	Flush-Round, 90-240VAC 50/60Hz, ¼" [6.3mm] spade terminals, Hours & 1/10's
722-0004	3-Hole Round, 90-240VAC 50/60Hz, ¼" [6.3mm] spade terminals, Hours & 1/10's
5003-007S	NEMA 4X, 12 Gasket kit and hardware for 3-Hole Round model (722-0004)

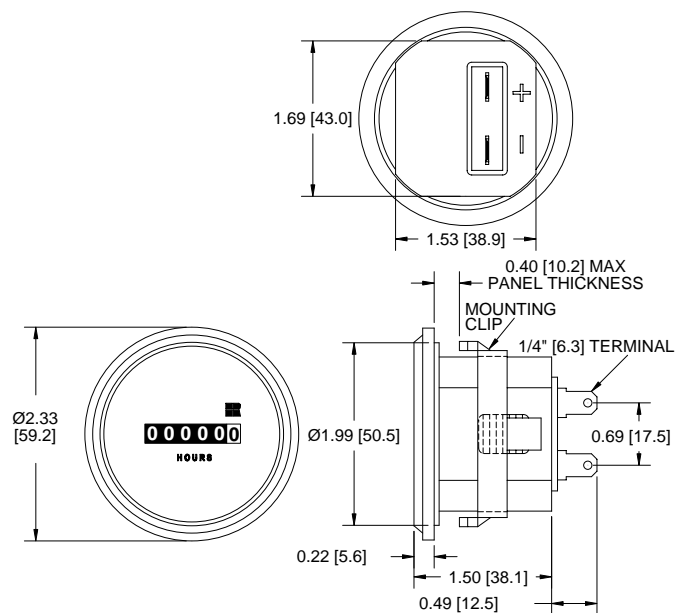
Dimensions



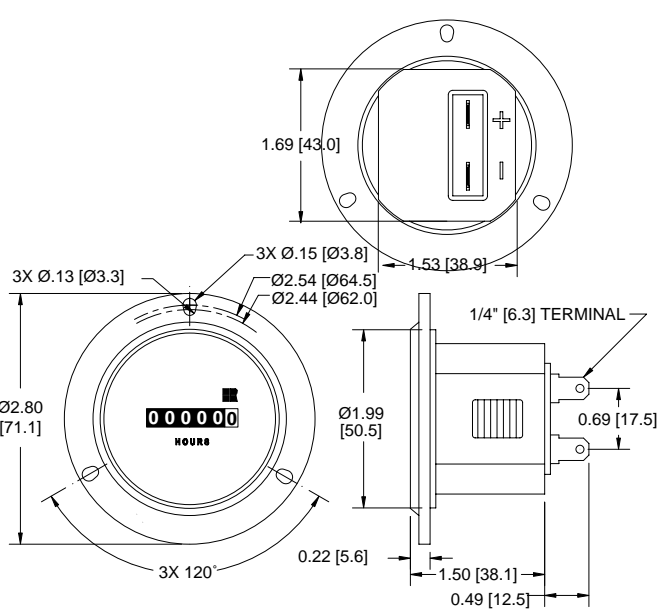
Panel Opening: 1.45" X 0.95" [36.8 X 24.1]



Panel Opening: 1.45" X 0.95" [36.8 X 24.1]
Panel Thickness: 0.03 to 0.63 [0.76 to 16.00]



Panel Opening: 2.0" [50.6]
Panel Thickness: 0.40 [10.2] Max.



Panel Opening: 2.0" [50.6]

Applications

Medical Equipment



Test Equipment



Office Equipment

