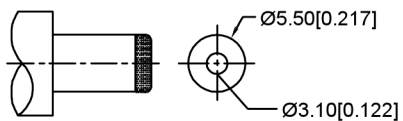
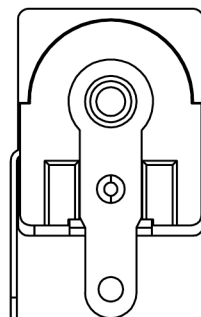
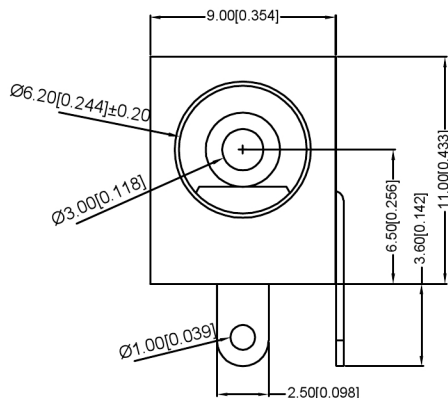
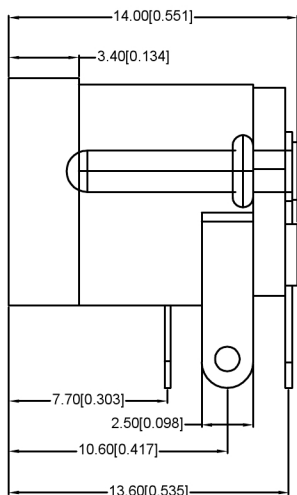


**PCB LAYOUT TOP VIEW**  
TOLERANCES: ±0.05



**MATING PLUG**  
Jack Insertion Depth: 9.0 mm

SCHEMATIC	
Model	DC-005-5A
Center Pin	Ø2.0mm
	Ø2.5mm
	Ø3.0mm

**SPECIFICATIONS:**

规格:

**1. ELECTRICAL CHARACTERISTICS:**

电气特性:

**1-1. RATING:**

评级:

**1-2. CONTACT RESISTANCE: 30mΩ MAX. (INITIAL)**

接触电阻: 最大30mΩ (初始)

**1-3. DIELECTRIC WITHSTANDING VOLTAGE: 500V AC FOR ONE MINUTE**

介质耐受电压: 500V AC FOR ONE MINUTE

**1-4. INSULATION RESISTANCE: 100MΩ MIN. MEASURED BY 500V DC**

绝缘电阻: 500V直流电测得的最小值为100MΩ

**2. MECHANICAL CHARACTERISTICS:**

机械特性:

**2-1. INSERTION FORCE: 0.3~3.0 KGF**

插入力: 0.3~3.0 KGF

**2-2. WITHDRAWAL FORCE: 0.3~3.0 KGF**

拔出力: 0.3~3.0 KGF

**3. LIFE TEST: 5,000 CYCLES MIN.**

寿命试验: 至少5000次循环。

**4. FOR REFLOW SOLDERING LEAD-FREE PROCESS.**

用于回流焊无铅工艺。

	MATERIAL	PLATING
center pin	Brass	silver
terminal 1	Brass	silver
terminal 2	Phosphor Bronze	silver
terminal 3	Brass	silver
plastic	Pbt	

广东星坤科技股份有限公司

ΔX	日期
ΔX	日期
ΔX	日期
MARK	DESCRIPTION

文件工程章

REVISIONS	DATE	REVISED	APPROVED	UNSPECIFIED TOLERANCES

ANGULAR	±5°
L ≤ 4	±0.2
4 < L ≤ 16	±0.3
16 < L ≤ 63	±0.4
L > 63	±0.5



DSND	SCALE: N/A
DWN	VIEW:
CHKD	UNIT: mm/in
APPD	SIZE: A4

MODEL TYPE:	DC POWER JACK	
PART NO.:	DC-005-5A-3.0	
DWG NO.:		
WEIGHT	SHEET	REVISI
	1/1	A0

XKB INDUSTRIAL PRECISION CO., LIMITED