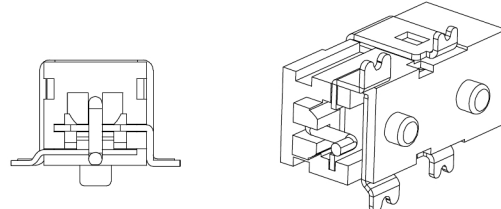
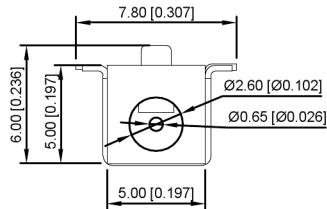
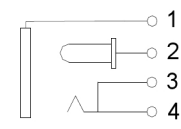
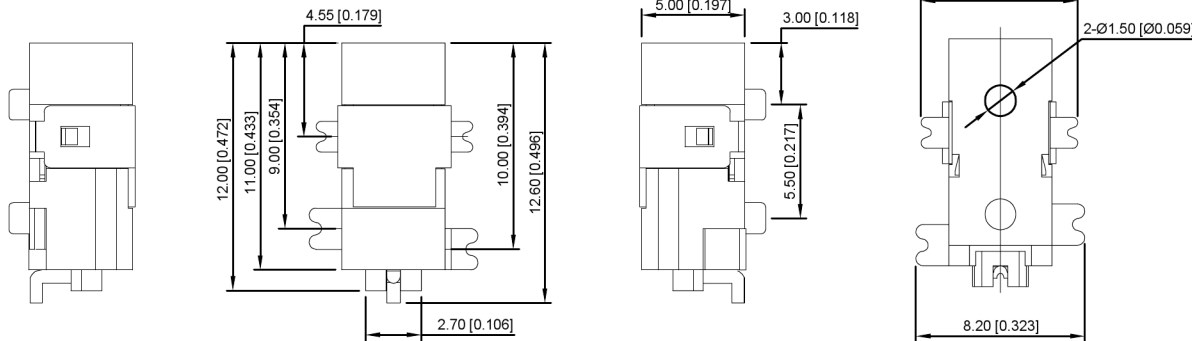


Main technical performance

Voltage rating	DC 30V0.5A
Contact resistance	≤0.03Ω
Insulation resistance	≥100MΩ
Withstanding voltage	AC500V(50Hz)/min
Insertion force	3-20N
Temperature range	-30-70℃
Life	5000次



SCHEMATIC	
Model	DC-011C-SMT
Center Pin	Ø0.65 mm



	MATERIAL	PLATING
center pin	Brass	tin
terminal 1	Brass	ni
terminal 2	Brass	tin
terminal 3	Brass	ag
terminal 4	Phosphor Bronze	ag
plastic	PPA	


广东星坤科技股份有限公司

ΔX	日期
ΔX	日期
ΔX	日期
MARK	DESCRIPTION

文件工程章

REVISIONS	DATE	REVISED	APPROVED	UNSPECIFIED TOLERANCES
ANGLAR				±5°
L ≤ 4				±0.2
4 < L ≤ 16				±0.3
16 < L ≤ 63				±0.4
L > 63				±0.5



DSND	SCALE: N/A
DWN	VIEW: 
CHKD	UNIT: mm/in
APPD	SIZE: A4

MODEL TYPE:	DC POWER JACK	
PART NO.:	DC-011C-SMT	
DWG NO.:		
WEIGHT	SHEET	REVISIC
	1/1	A0

XKB INDUSTRIAL PRECISION CO., LIMITED

www.helloxkb.com www.helloxkb.cn www.xk-dg.cn