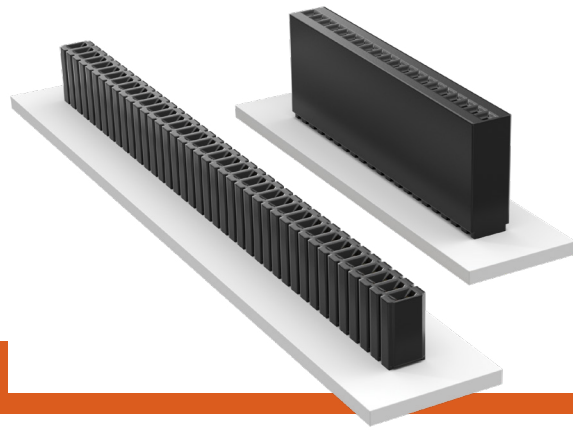


THROUGH-HOLE MICRO SOCKETS

(1.27 mm) .050" PITCH • SLM/SMS SERIES



SLM

Mates:

HTMS, TMS, MTMS, DWM,
HDWM, FTR, HMTMS

SMS

Mates:

HTMS, TMS, MTMS,
DWM, HDWM, FTR, TML,
ZML, HMTM

SPECIFICATIONS

Insulator Material:

SLM: Black Glass Filled Polyester

SMS: Black LCP

Contact Material:

Phosphor Bronze

Plating:

Au or Sn over
50 μ " (1.27 μ m) Ni

Operating Temp Range:

-55 °C to +125 °C with Gold

-55 °C to +105 °C with Tin

Current Rating (SLM/TMS):

5.2 A per pin

(2 pins powered)

Current Rating (SMS/TMS):

5.0 A per pin

(2 pins powered)

Voltage Rating:

SLM: 238 VAC/336 VDC

SMS: 300 VAC/424 VDC

Insertion Depth:

SLM: (2.03 mm) .080"

to (3.05 mm) .120"

SMS: (3.43 mm) .135" to

(6.35 mm) .250" with

(0.38 mm) .015" wipe

PROCESSING

Lead-Free Solderable:

SLM: No, Lead Wave Only

SMS: Yes

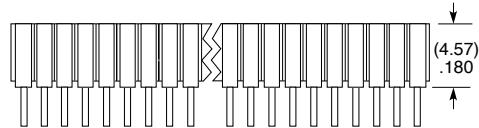
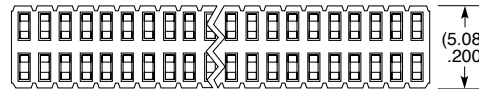
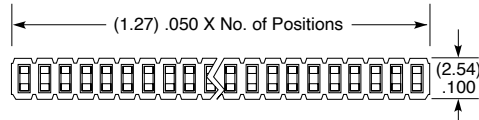
ALSO AVAILABLE

Contact Samtec

Other Platings

SLM	-	1	NO. PINS PER ROW	-	01	-	PLATING OPTION	-	ROW OPTION
-----	---	---	---------------------	---	----	---	-------------------	---	---------------

01 thru 50



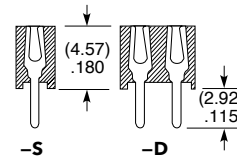
-F
= Gold flash on contact,
Matte Tin on tail

-L
= 10 μ " (0.25 μ m) Gold on contact,
Matte Tin on tail

-G
= 20 μ " (0.51 μ m) Gold on contact,
Gold flash on balance

-S
= Single
Row

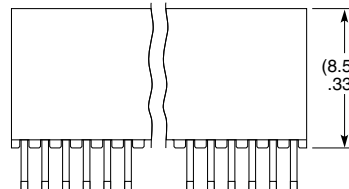
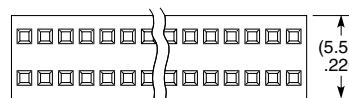
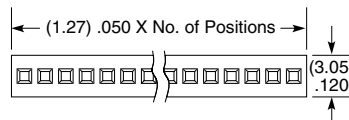
-D
= Double
Row



SMS	-	1	NO. PINS PER ROW	-	LEAD STYLE	-	PLATING OPTION	-	ROW OPTION
-----	---	---	---------------------	---	---------------	---	-------------------	---	---------------

01 thru 50

Specify
LEAD
STYLE
from
chart



-F
= Gold flash on contact,
Matte Tin on tail

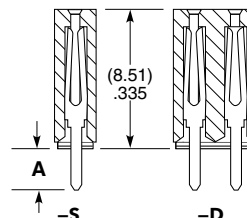
-L
= 10 μ " (0.25 μ m) Gold on contact,
Matte Tin on tail

-G
= 20 μ " (0.51 μ m) Gold on contact,
Gold flash on balance

-S
= Single
Row

-D
= Double
Row

LEAD STYLE	A
-01	(2.54) .100
-02	(4.83) .190



Note:

Some lengths, styles and
options are non-standard,
non-returnable.