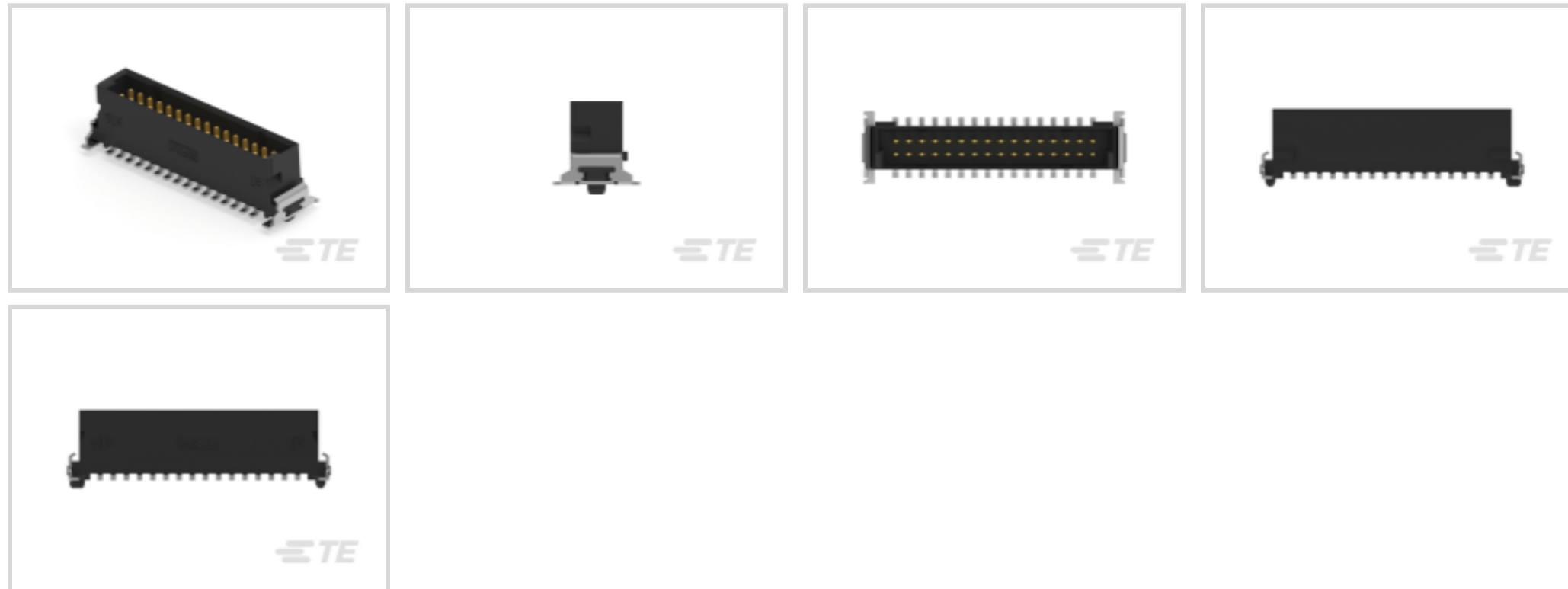




Connectors > PCB Connectors > PCB Headers & Receptacles



PCB Connector Type: **PCB Mount Header**

Connector System: **Board-to-Board**

Number of Positions: **32**

Number of Rows: **2**

Centerline (Pitch): **1.27 mm [.05 in]**

## Features

### Product Type Features

Connector Shape	Rectangular
PCB Connector Type	PCB Mount Header
Connector System	Board-to-Board
Header Type	Fully Shrouded
Connector & Contact Terminates To	Printed Circuit Board
Connector Product Type	Connector Assembly

### Configuration Features

Number of Columns	16
Number of Loaded Positions	32
Stacking Configuration	Stack Through
Connector Contact Load Condition	Fully Loaded
Stackable	Yes
Number of Positions	32
Number of Rows	2



PCB Mount Orientation	Vertical
-----------------------	----------

Board-to-Board Configuration	Parallel
------------------------------	----------

### Electrical Characteristics

Dielectric Withstanding Voltage (Max)	500 Vrms
---------------------------------------	----------

### Body Features

Connector Profile	Low
-------------------	-----

Primary Product Color	Black
-----------------------	-------

### Contact Features

PCB Contact Termination Area Plating Material Thickness	4 – 6 $\mu\text{m}$ [157.48 – 236.22 $\mu\text{in}$ ]
---	---

Contact Shape & Form	Rectangular
----------------------	-------------

Contact Layout	Matrix
----------------	--------

Contact Mating Area Length	4 mm[.157 in]
----------------------------	---------------

Contact Base Material	Copper Alloy
-----------------------	--------------

Contact Mating Area Plating Material	Gold (Au)
--------------------------------------	-----------

Contact Type	Pin
--------------	-----

Contact Current Rating (Max)	1.7 A
------------------------------	-------

PCB Contact Termination Area Plating Material	Tin
---	-----

### Termination Features

Termination Method to PCB	Surface Mount
---------------------------	---------------

### Mechanical Attachment

Mounting Alignment Feature Length	.75 mm[.029 in]
-----------------------------------	-----------------

PCB Mount Retention Type	Location Peg
--------------------------	--------------

PCB Mount Alignment Type	Locating Posts
--------------------------	----------------

Mating Alignment Type	Polarization
-----------------------	--------------

Connector Mounting Type	Board Mount
-------------------------	-------------

Mating Alignment	With
------------------	------

PCB Mount Alignment	With
---------------------	------

PCB Mount Retention	With
---------------------	------

### Housing Features

Mating Entry Location	Top
-----------------------	-----

Centerline (Pitch)	1.27 mm[.05 in]
--------------------	-----------------

Housing Material	LCP
------------------	-----



### Dimensions

Connector Width	7 mm[.275 in]
Connector Height	6.75 mm[.266 in]
Profile Height from PCB	6.75 mm[.266 in]
Connector Length	25.4 mm[1 in]
Row-to-Row Spacing	1.27 mm[.05 in]
Stack Height	1.75 mm[.069 in]

### Usage Conditions

Operating Temperature (Max)	125 °C[257 °F]
Operating Temperature Range	-55 – 125 °C[-67 – 257 °F]

### Operation/Application

Shielded	No
Circuit Application	Power & Signal

### Industry Standards

Compatible With Agency/Standards Products	DIN, UL
Industry Standard	IEC
Compatible With Approved Standards Products	UL
UL Flammability Rating	UL 94V-0

### Packaging Features

Packaging Reel Diameter	330 mm[12.99 in]
Packaging Quantity	280
Packaging Method	Tape & Reel

### Product Compliance

[For compliance documentation, visit the product page on TE.com>](#)

EU RoHS Directive 2011/65/EU	Compliant
EU ELV Directive 2000/53/EC	Compliant
China RoHS 2 Directive MIIT Order No 32, 2016	No Restricted Materials Above Threshold
EU REACH Regulation (EC) No. 1907/2006	Current ECHA Candidate List: JUNE 2025 (250) Candidate List Declared Against: JAN 2025 (247) Does not contain REACH SVHC
Halogen Content	Low Halogen - Br, Cl, F < 900 ppm per



homogenous material. Also BFR/CFR/PVC Free

Solder Process Capability

Not reviewed for solder process capability

Product Compliance Disclaimer

This information is provided based on reasonable inquiry of our suppliers and represents our current actual knowledge based on the information they provided. This information is subject to change. The part numbers that TE has identified as EU RoHS compliant have a maximum concentration of 0.1% by weight in homogenous materials for lead, hexavalent chromium, mercury, PBB, PBDE, DBP, BBP, DEHP, DIBP, and 0.01% for cadmium, or qualify for an exemption to these limits as defined in the Annexes of Directive 2011/65/EU (RoHS2). Finished electrical and electronic equipment products will be CE marked as required by Directive 2011/65/EU. Components may not be CE marked. Additionally, the part numbers that TE has identified as EU ELV compliant have a maximum concentration of 0.1% by weight in homogenous materials for lead, hexavalent chromium, and mercury, and 0.01% for cadmium, or qualify for an exemption to these limits as defined in the Annexes of Directive 2000/53/EC (ELV). Regarding the REACH Regulation, the information TE provides on SVHC in articles for this part number is based on the latest European Chemicals Agency (ECHA) 'Guidance on requirements for substances in articles' posted at this URL: <https://echa.europa.eu/guidance-documents/guidance-on-reach>

### Compatible Parts



TE Part # 168329-E  
IDCCS SMC 1,27 32 \* AU AUI 200 PVC



TE Part # 168327-E  
IDCCS SMC 1,27 32 \* AU AUI 100 PVC



TE Part # 354064-E  
SMCB 32 F AB VV 7-03 CL \* H007 137 E002




TE Part # 354057-E  
SMCB 32 F AB VV 7-13 CL \* H007 137 E002



TE Part # 354080-E  
SMCQ 32 F AB VV 7-03 CL \* 0007 137 E002



TE Part # 168330-E  
IDCCS SMC 1,27 32 \* AU AUI 300 PVC



TE Part # 294815-E  
SMCB 32 F AB VV 6-01 VH \* 0008 137 E002

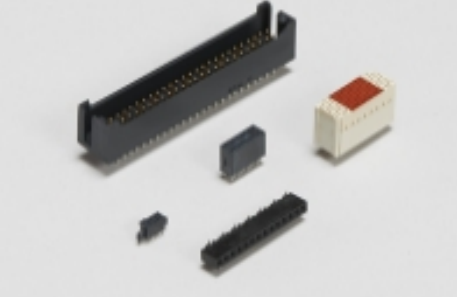


TE Part # 354072-E  
SMCB 32 F AB VV 7-23 CL \* H007 137 E002


### Also in the Series | ERNI SMC



Board-In Connectors(6)



Board-to-Board Headers & Receptacles(81)



Connector Adapters & Connector Savers(41)



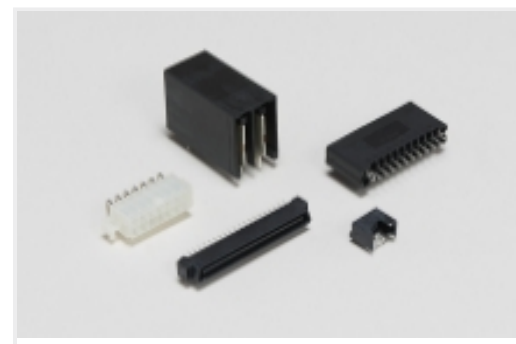
PCB Headers & Receptacles(81)



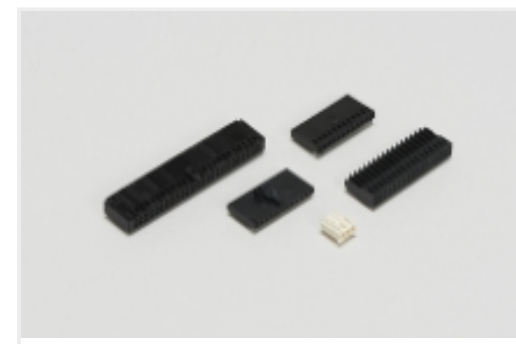
Pluggable I/O Cable Assemblies(27)



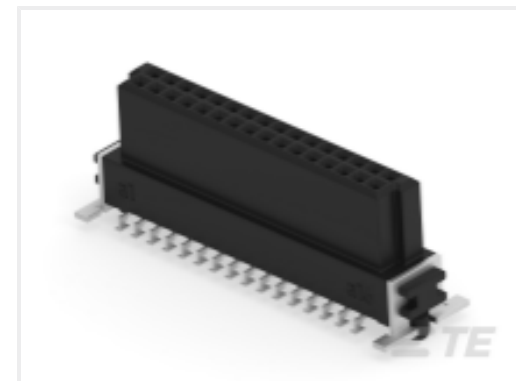
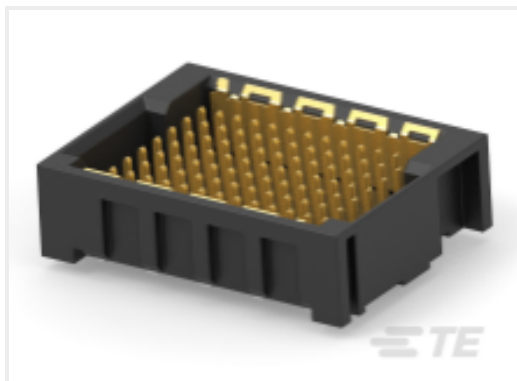
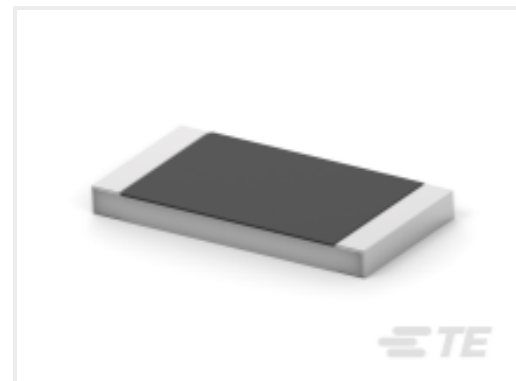
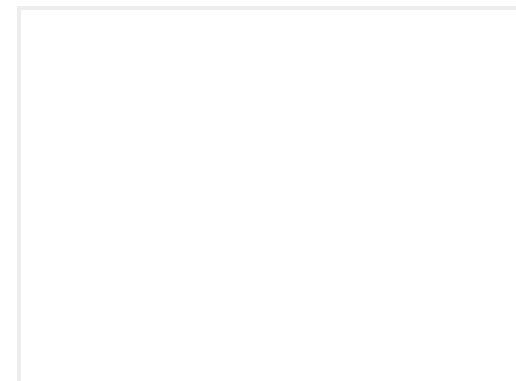
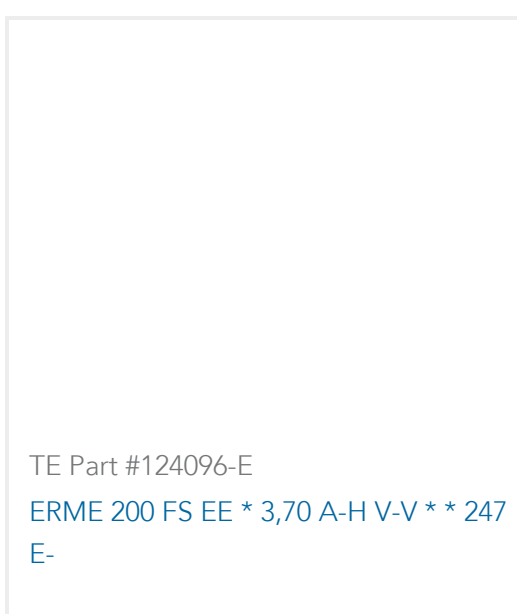
Rectangular Power Connectors(86)



Standard Rectangular Connectors(5)

Wire-to-Board Connector Assemblies  
& Housings(5)

## Customers Also Bought

TE Part #454701-E  
MSPEED 91 F SMD F4 B A-G VVV  
137 094 \*TE Part #294138-E  
DRCQ 0,80 40 M 2 SMD M1 137 E009  
176 GU-TE Part #154805-E  
SMCB 12 F AB VV 7-13 CL \* H007 137  
E002TE Part #354064-E  
SMCB 32 F AB VV 7-03 CL \* H007 137  
E002TE Part #454700-E  
MSPEED 91 M SMD M1 B A-G VVV  
137 176 \*TE Part #294288-E  
DRCB 0,80 50 M SMD \* 137 E009 196  
GURT \*TE Part #CAT-C339-A76  
SMD Power Resistor: 1 Watt, 3520  
SeriesTE Part #5646957-3  
UPM R/A Header 7P connector  
LSSLSSLTE Part #124096-E  
ERME 200 FS EE \* 3,70 A-H V-V \*\* 247  
E-

## Documents

### CAD Files

Customer View Model

[ENG\\_CVM\\_CVM\\_254589-E\\_1.3d\\_igs.zip](#)

English

Customer View Model

[ENG\\_CVM\\_CVM\\_254589-E\\_1.3d\\_stp.zip](#)

English

Customer View Model

[ENG\\_CVM\\_CVM\\_254589-E\\_1.2d\\_dxf.zip](#)



English

[3D PDF](#)

3D

By downloading the CAD file I accept and agree to the [Terms and Conditions](#) of use.

---

### Datasheets & Catalog Pages

[Datasheet - ERNI SMC 1.27mm Connectors](#)

English

[Datasheet - ERNI SMC 1.27mm Connectors](#)

[Datasheet - ERNI SMC 1.27mm Connectors](#)

German

---

### Product Specifications

[SMC\\_Receptacle\\_with\\_Ribbon\\_Cable\\_IDC\\_and\\_Header](#)

English