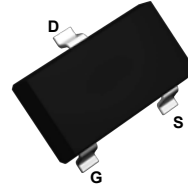
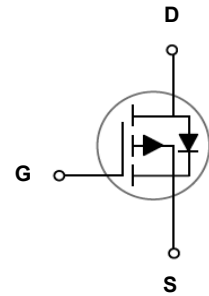


Main Product Characteristics

BV_{DSS}	-40V
$R_{DS(ON)}$	68m Ω
I_D	-2.9A



SOT-23



Schematic Diagram

Features and Benefits

- Advanced MOSFET process technology
- Ideal for high efficiency switched mode power supplies
- Low on-resistance with low gate charge
- Fast switching and reverse body recovery



Description

The GSFC0403 utilizes the latest techniques to achieve high cell density and low on-resistance. These features make this device extremely efficient and reliable for use in high efficiency switch mode power supply and a wide variety of other applications.

Absolute Maximum Ratings ($T_C=25^\circ\text{C}$ unless otherwise specified)

Parameter	Symbol	Max.	Unit
Drain-Source Voltage	V_{DS}	-40	V
Gate-Source Voltage	V_{GS}	± 20	V
Drain Current-Continuous ($T_A=25^\circ\text{C}$)	I_D	-2.9	A
Drain Current-Continuous ($T_A=100^\circ\text{C}$)		-2.32	
Drain Current-Pulsed ¹	I_{DM}	-11.6	A
Power Dissipation ($T_A=25^\circ\text{C}$)	P_D	1	W
Power Dissipation-Derate above 25 $^\circ\text{C}$		8	
Thermal Resistance, Junction-to-Ambient	$R_{\theta JA}$	125	$^\circ\text{C}/\text{W}$
Operating Junction Temperature Range	T_J	-55 To +150	$^\circ\text{C}$
Storage Temperature Range	T_{STG}	-55 To +150	$^\circ\text{C}$

Electrical Characteristics ($T_J=25^{\circ}\text{C}$ unless otherwise specified)

Parameter	Symbol	Conditions	Min.	Typ.	Max.	Unit
On/Off Characteristics						
Drain-Source Breakdown Voltage	BV_{DSS}	$V_{GS}=0V, I_D=-250\mu A$	-40	-	-	V
Drain-Source Leakage Current	I_{DSS}	$V_{DS}=-40V, V_{GS}=0V, T_J=25^{\circ}\text{C}$	-	-	-1	μA
		$V_{DS}=-32V, V_{GS}=0V, T_J=125^{\circ}\text{C}$	-	-	-10	μA
Gate-Source Leakage Current	I_{GSS}	$V_{GS}=\pm 20V, V_{DS}=0V$	-	-	± 100	nA
Static Drain-Source On-Resistance	$R_{DS(ON)}$	$V_{GS}=-10V, I_D=-2A$	-	55	68	m Ω
		$V_{GS}=-4.5V, I_D=-1A$	-	75	100	
Gate Threshold Voltage	$V_{GS(th)}$	$V_{GS}=V_{DS}, I_D=-250\mu A$	-1.0	-1.65	-2.5	V
Forward Transconductance	g_{fs}	$V_{DS}=-10V, I_D=-1A$	-	3	-	S
Dynamic and Switching Characteristics						
Total Gate Charge ^{2,3}	Q_g	$V_{DS}=-32V, I_D=-2A, V_{GS}=-10V$	-	6.4	13	nC
Gate-Source Charge ^{2,3}	Q_{gs}		-	0.5	2	
Gate-Drain Charge ^{2,3}	Q_{gd}		-	2.7	6	
Turn-On Delay Time ^{2,3}	$t_{d(on)}$	$V_{DD}=-20V, R_G=6\Omega, V_{GS}=-10V, I_D=-1A$	-	12	24	nS
Rise Time ^{2,3}	t_r		-	9	20	
Turn-Off Delay Time ^{2,3}	$t_{d(off)}$		-	45	90	
Fall Time ^{2,3}	t_f		-	5	10	
Input Capacitance	C_{iss}	$V_{DS}=-25V, V_{GS}=0V, F=1\text{MHz}$	-	600	1200	pF
Output Capacitance	C_{oss}		-	60	120	
Reverse Transfer Capacitance	C_{rss}		-	43	80	
Drain-Source Diode Characteristics and Maximum Ratings						
Continuous Source Current	I_S	$V_G=V_D=0V, \text{Force Current}$	-	-	-2.9	A
Pulsed Source Current	I_{SM}		-	-	-5.8	A
Diode Forward Voltage	V_{SD}	$V_{GS}=0V, I_S=-1A, T_J=25^{\circ}\text{C}$	-	-	-1	V

Note:

1. Repetitive rating: Pulsed width limited by maximum junction temperature.
2. Pulse test: pulse width $\leq 300\mu s$, duty cycle $\leq 2\%$.
3. Essentially independent of operation temperature.

Typical Electrical and Thermal Characteristic Curves

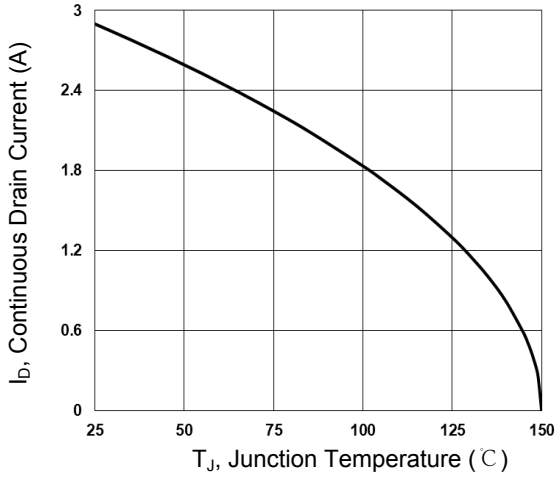


Figure 1. Continuous Drain Current vs. T_J

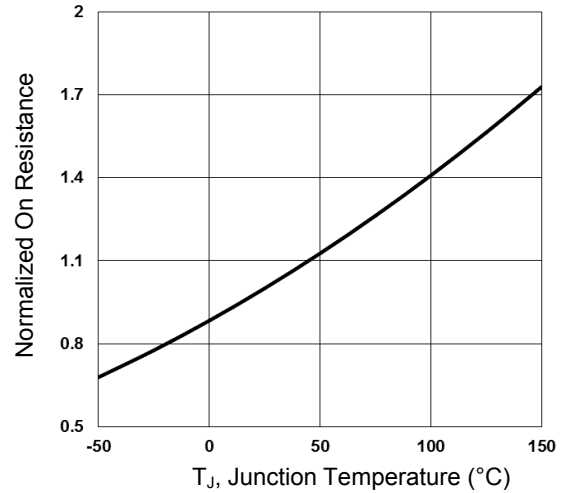


Figure 2. Normalized $R_{DS(on)}$ vs. T_J

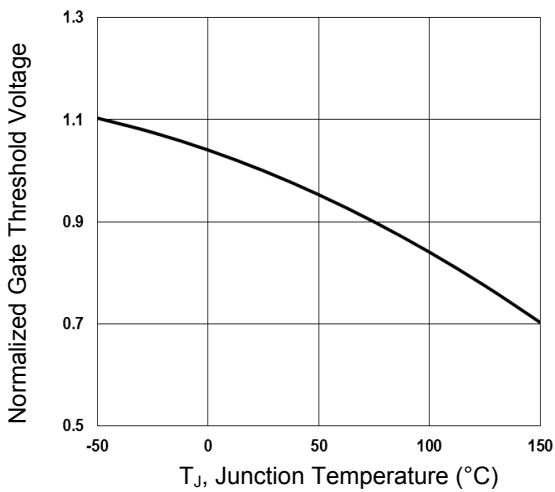


Figure 3. Normalized V_{th} vs. T_J

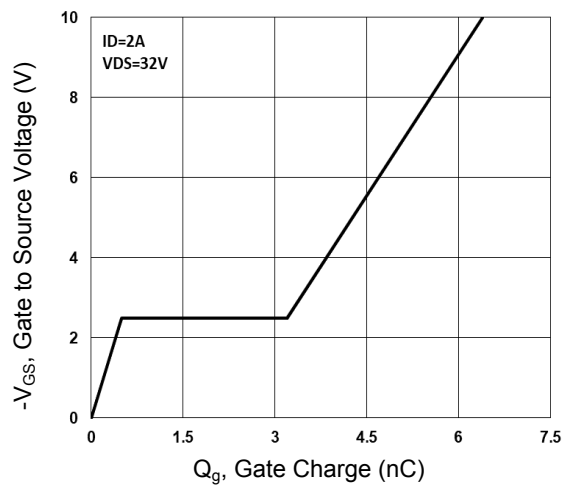


Figure 4. Gate Charge Waveform

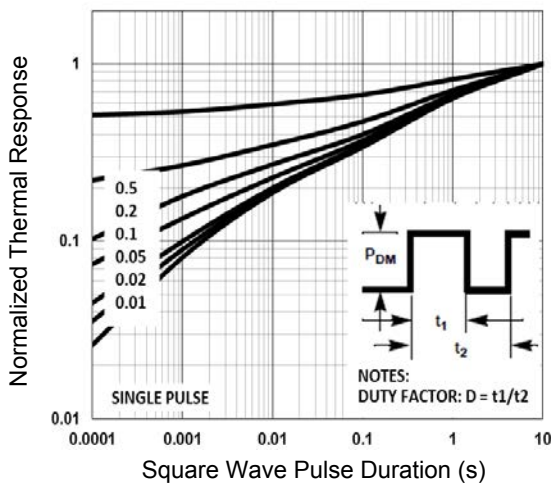


Figure 5. Normalized Transient Impedance

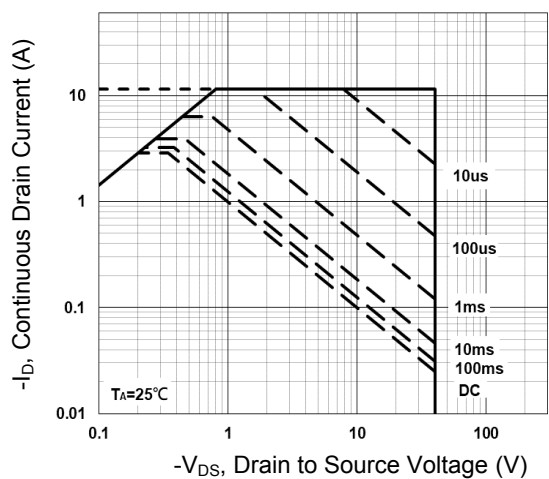


Figure 6. Maximum Safe Operation Area

Typical Electrical and Thermal Characteristic Curves

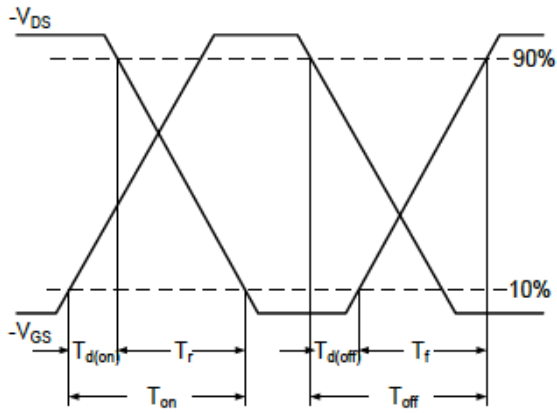


Figure 7. Switching Time Waveform

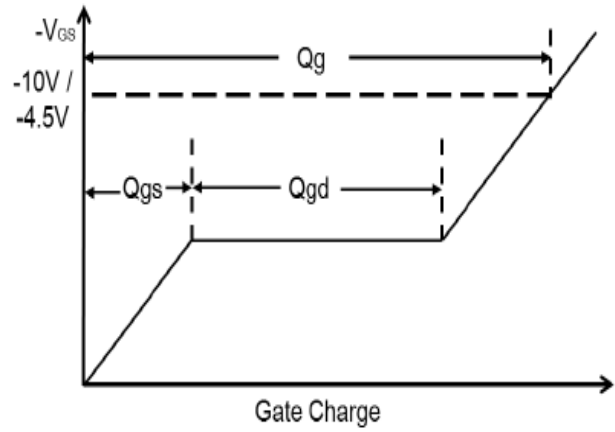
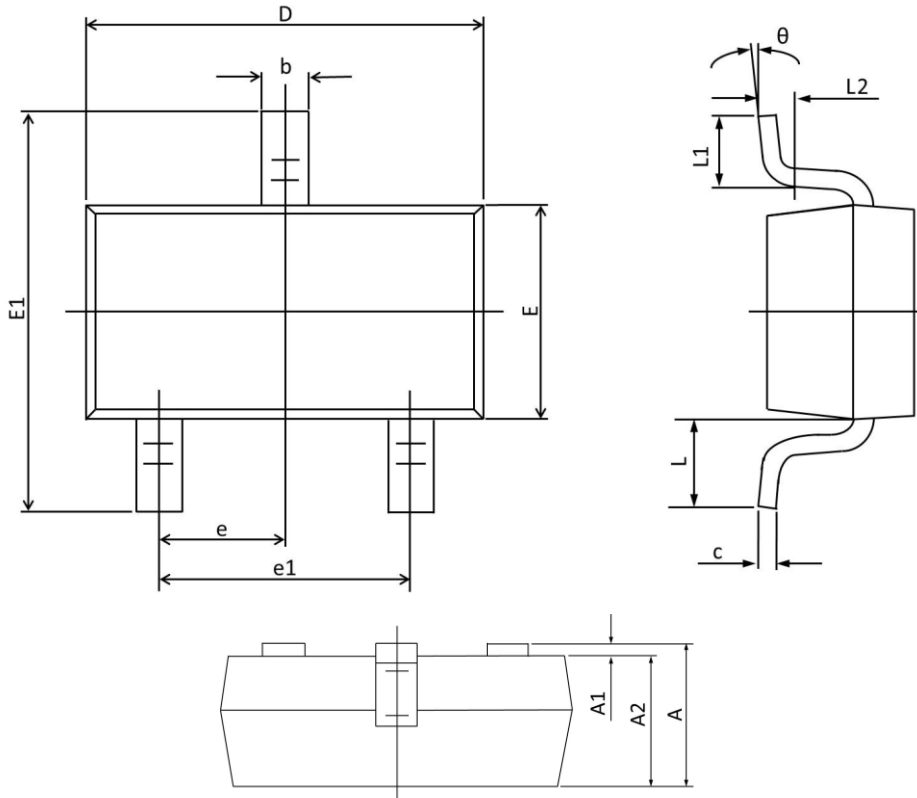


Figure 8. Gate Charge Waveform

Package Outline Dimensions (SOT-23)



Symbol	Dimensions In Millimeters		Dimensions In Inches	
	Max	Min	Max	Min
A	1.150	0.900	0.045	0.035
A1	0.100	0.000	0.004	0.000
A2	1.050	0.900	0.041	0.035
b	0.500	0.300	0.020	0.012
c	0.150	0.080	0.006	0.003
D	3.000	2.800	0.118	0.110
E	1.400	1.200	0.055	0.047
E1	2.550	2.250	0.100	0.089
e	0.95 TYP.		0.037 TYP.	
e1	2.000	1.800	0.079	0.071
L	0.55 REF.		0.022 REF.	
L1	0.500	0.300	0.020	0.012
L2	0.25 TYP.		0.01 TYP.	
θ	8°	0°	8°	0°