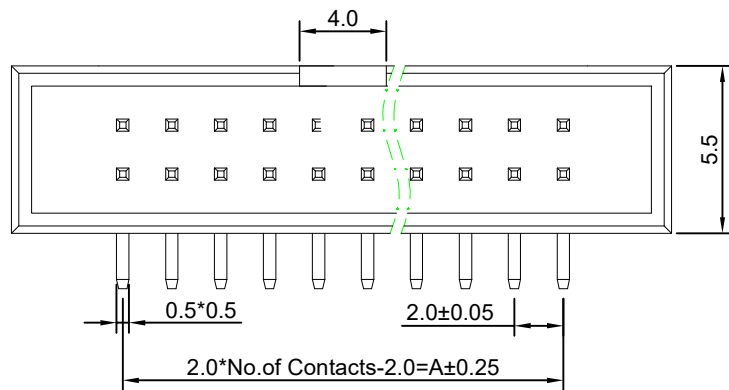


# RoHS

| REV | ECN NO. | DESCRIPTION | DESIGN | APPROVAL | DATE       |
|-----|---------|-------------|--------|----------|------------|
| A1  | NEW     | 更换图框        |        |          | 2024.05.24 |



### SPECIFICATIONS

- Current rating: 2A
- Temperature range: -40°C ~ +105°C
- Insulation resistance: 1000MΩ Min.
- Withstanding voltage: 500V AC/ minute.
- Contact resistance: 20mΩ Max.

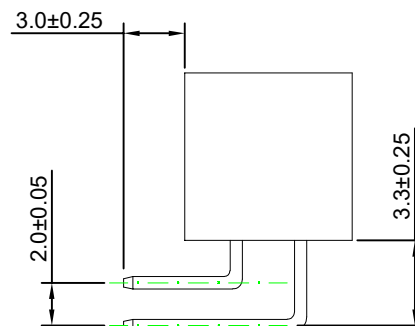
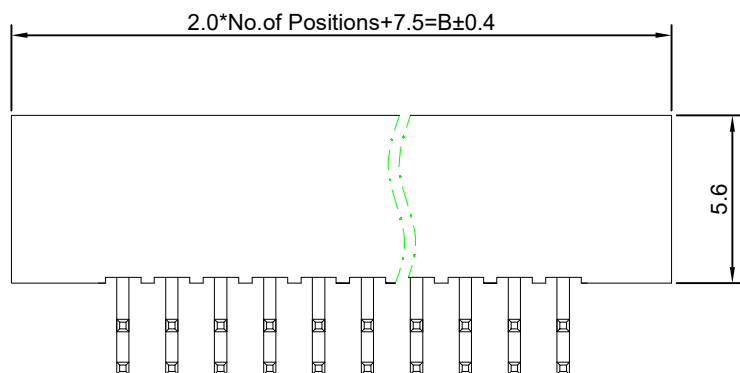
### Material:

Insulator Material: PA6T (UL 94V-0) Black  
 Contact Material: Copper Alloy  
 Plating: Matte Tin or gold plated over Nickel  
 Mate with PM200 /I200 series

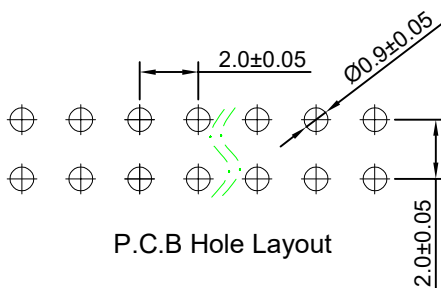
### Ordering Code:

BH200R-xxP  
 1 2

- 序列号
- Pin位数: 2x06=12P



| No. of PIN/ROW | Dimension |       |
|----------------|-----------|-------|
|                | A         | B     |
| 2x03           | 4.00      | 13.50 |
| 2x04           | 6.00      | 15.50 |
| 2x05           | 8.00      | 17.50 |
| 2x06           | 10.00     | 19.50 |
| 2x08           | 14.00     | 23.50 |
| 2x10           | 18.00     | 27.50 |
| 2x12           | 22.00     | 31.50 |
| 2x14           | 26.00     | 35.50 |
| 2x16           | 30.00     | 39.50 |
| 2x18           | 34.00     | 43.50 |
| 2x20           | 38.00     | 47.50 |
| 2x24           | 46.00     | 55.50 |
| 2x26           | 50.00     | 59.50 |
| 2x30           | 58.00     | 67.50 |
| 2x34           | 66.00     | 75.50 |



P.C.B Hole Layout

|  |        |                        |                   |       |       |                                  |               |  |
|--|--------|------------------------|-------------------|-------|-------|----------------------------------|---------------|--|
| X.±0.50  | X.°±   | PART NO:<br>BH200R-xxP | <b>XFCN 兴飞连接器</b> |       |       |                                  |               |  |
| .X±0.25  | .X°±   |                        |                   |       |       | TITLE:<br>2.00mm 简易牛角 双排 DIP 90° | 0769-82001899 |  |
| .XX±0.15   | .XX°±  |                        |                   |       |       | www.xfconn.com                   |               |  |
| .XXX±0.10  | .XXX°± |                        |                   |       |       | DWG NO:                          |               |  |
| UNITS:   | mm     | APPD                   | Chen ZhiQiang     | VIEW  |       |                                  |               |  |
| THESE DRAWINGS AND SPECIFICATIONS ARE THE PROPERTY OF XFCN AND SHALL NOT BE REPRODUCED, COPIED OR CUED IN ANY MANNER WITHOUT THE PRIOR WRITTEN CONSENT OF XFCN |        | CHKD                   | Liu Wei           |       |       |                                  |               |  |
|  |        | DRAW                   | Chen HongJiang    | SCALE | SHEET |                                  |               |  |
|  |        | DATE                   | 2024.08.21        | NONE  | 1/1   | REV                              |               |  |
|  |        |                        |                   |       |       | A1                               |               |  |