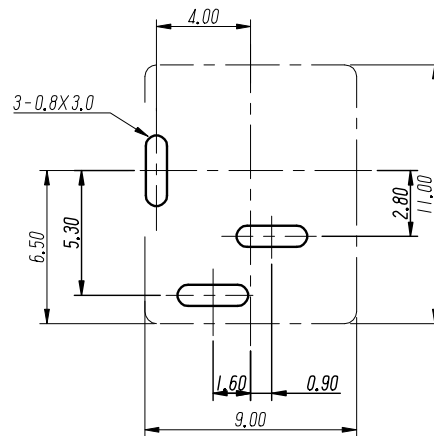
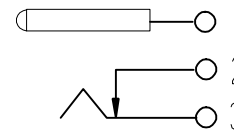


PCB LAYOUT  
TOP VIEW (TOLERANCE:±0.05)



**SCHEMATIC**



**技术特性:**

使用条件: -30~70°  
 额定负荷: DC30V 1A  
 接触电阻: ≤0.02 Ω  
 绝缘电阻: ≥100m Ω DC250V  
 耐压: AC250V(50Hz)/min  
 插拔力: 3~15N  
 寿命: 5000次

6	弯片	1	H62黄铜带(Y) δ=0.30mm	铜镍
5	插针	1	H62黄铜棒	铜镍
4	后盖	1	PBT	黑
3	平片	1	H62黄铜带(Y) δ=0.30mm	铜镍
2	簧片	1	65Mn 锰钢带 δ=0.20mm	铜镍
1	底座	1	PBT	黑
序号	名称	数量	材料	备注

GENERAL TOLERANCES		
0.X	±0.30	X° ±3°
0.XX	±0.20	
0.XXX	±0.10	X.X° ±1°
UNIT	SIZE	SCALE
MM	A4	1:1

DRAWN		C	TITLE: 电源插座
DESIGN			PART NO. DC-012A-2.0-MN
CHECKED			PRODUCT NO.
APPROVED			DRAWING NO.
		UNIT: mm	SCALE: 1:1 REV:01-1 SHT:10F1

浙江创都电子科技有限公司

ECN NO.	REV	DATE	DESCRIPTION	MDF'D	APP'D
	01	2022.04.27	NEW DRAWING RELEASE		

8

7

6

5

4

3

2

1