



Measurement pick-off terminal, Screw connection, Mounting type: On base, Rated cross-section: 6 mm<sup>2</sup>, Width: 8.3 mm, Colour: Beige

### Business data

Article number	<u>17148.2</u>
Article name	SMAG 35/6 BG
GTIN (EAN)	4044211186685
Packaging unit	50
Quantity unit	PC
Weight per piece (not including packaging)	7.22 g
Weight per piece (including packaging)	7.32 g
Unit of weight	G
Customs number	85369010
Country of origin	DE
Product description	Measurement pick-off terminal

### Technical data

#### Dimensions

Length	43.7 mm
Length TS 35/7.5	102 mm
Width	8.3 mm
Width TS 35/7.5	16.1 mm
Height	30.7 mm
Height TS 35/7.5	65 mm

#### Ratings

Rated voltage	1000 V
Rated current	41 A
Current load, max.	57 A
Rated cross-section	6 mm <sup>2</sup>
Rated impulse voltage	8 kV
Overvoltage category	III
Contamination degree	3
Maximum power dissipation for nominal condition	1.31 W

#### Connection data

Connection principle	Screw connection
Connections	1
Wire cross-section single-core (rigid) / stranded, min.	2 mm <sup>2</sup>
Wire cross-section single core (rigid)/stranded, max.	10 mm <sup>2</sup>
Wire cross-section stranded, min.	2 mm <sup>2</sup>
Wire cross-section stranded, max.	10 mm <sup>2</sup>
Wire cross-section stranded with wire-end ferrules, min.	2 mm <sup>2</sup>
Wire cross-section stranded with wire-end ferrules, max.	6 mm <sup>2</sup>
Wire cross-section AWG, min.	22
Wire cross-section AWG, max.	8
Stripping length	10 mm
Screw head	Slotted
Screw threading	M 3,5

---

### Technical data

---

#### Materials

Insulation housing	Polyamide 6.6
Flammability class UL 94	V-0
Working temperature, min.	-40 °C
Working temperature, max.	120 °C

#### Further technical data

Mounting type	On base
Gauge plug acc. to EN 60 947-1	A5

#### Environmental Product Compliance

REACH Candidate Substance Note	No
--------------------------------	----

---

### Approvals

---

#### Standards and regulations

---

EAC approval	TR ZU 004/2011
--------------	----------------

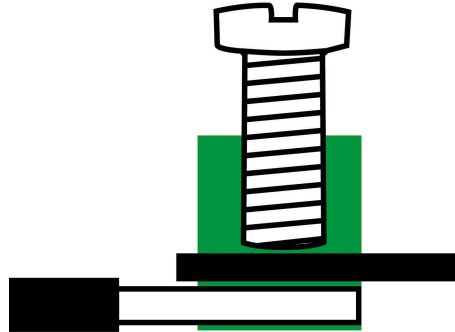
---

EAC approval granted	yes
----------------------	-----

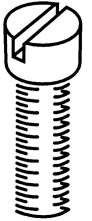
---

### Media

**EAC**



**M3.5**



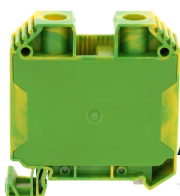
---

### Accessories

---

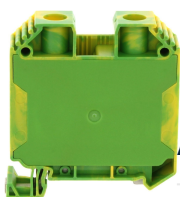
## 17148.2 SMAG 35/6 BG

### Terminal blocks



Protective earth terminal, Screw connection, Mounting type: Mounting rail TS 35/7.5, Rated cross-section: 35 mm<sup>2</sup>, Width: 16.1 mm, Colour: Green-yellow

Article number	Article name	GTIN (EAN)	Packaging unit
<a href="#">17147.2</a>	SSL 35/2A/IS GNYE	4044211186678	20 ST



Protective earth terminal, Screw connection, Mounting type: Mounting rail TS 35/7.5, Rated cross-section: 35 mm<sup>2</sup>, Width: 16.1 mm, Colour: Green-yellow

Article number	Article name	GTIN (EAN)	Packaging unit
<a href="#">17145.2</a>	SSL 35/2A GNYE	4044211186661	20 ST



Feed-through terminal, Screw connection, Mounting type: Mounting rail TS 35/7.5, Rated cross-section: 35 mm<sup>2</sup>, Width: 16.1 mm, Colour: Beige

Article number	Article name	GTIN (EAN)	Packaging unit
<a href="#">17141.2</a>	SRK 35/2A/Z BG	4044211186630	20 ST



Feed-through terminal, Screw connection, Mounting type: Mounting rail TS 35/7.5, Rated cross-section: 35 mm<sup>2</sup>, Width: 16.1 mm, Colour: Beige

Article number	Article name	GTIN (EAN)	Packaging unit
<a href="#">17143.2</a>	SRK 35/2A/Z/IS BG	4044211186654	20 ST



Feed-through terminal, Screw connection, Mounting type: Mounting rail TS 35/7.5, Rated cross-section: 35 mm<sup>2</sup>, Width: 16.1 mm, Colour: Beige

Article number	Article name	GTIN (EAN)	Packaging unit
<a href="#">17140.2</a>	SRK 35/2A BG	4044211186616	20



Feed-through terminal, Screw connection, Mounting type: Mounting rail TS 35/7.5, Rated cross-section: 35 mm<sup>2</sup>, Width: 16.1 mm, Colour: Beige

Article number	Article name	GTIN (EAN)	Packaging unit
<a href="#">17142.2</a>	SRK 35/2A/IS BG	4044211186647	20

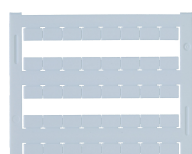
### Screwdriver

Screwdriver with bare blade, Colour: Black-grey



Article number	Article name	GTIN (EAN)	Packaging unit
<u>1087.0</u>	SDB 0,8x4,0	4044211014803	1 ST

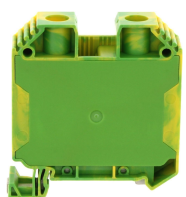
### Quick marking



Terminal marker / Pocket Maxicard, Length: 5 mm, Width: 8 mm, Colour: White

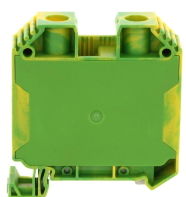
Article number	Article name	GTIN (EAN)	Packaging unit
<u>9323.7</u>	PMC SB 8/40 WH	4044211129231	400 ST

### ##INVERSE##CONTA-CONNECT



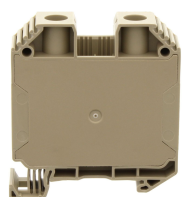
Protective earth terminal, Screw connection, Mounting type: Mounting rail TS 35/7.5, Rated cross-section: 35 mm<sup>2</sup>, Width: 16.1 mm, Colour: Green-yellow

Article number	Article name	GTIN (EAN)	Packaging unit
<u>17147.2</u>	SSL 35/2A/IS GNYE	4044211186678	20 ST



Protective earth terminal, Screw connection, Mounting type: Mounting rail TS 35/7.5, Rated cross-section: 35 mm<sup>2</sup>, Width: 16.1 mm, Colour: Green-yellow

Article number	Article name	GTIN (EAN)	Packaging unit
<u>17145.2</u>	SSL 35/2A GNYE	4044211186661	20 ST

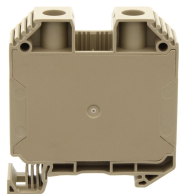


Feed-through terminal, Screw connection, Mounting type: Mounting rail TS 35/7.5, Rated cross-section: 35 mm<sup>2</sup>, Width: 16.1 mm, Colour: Beige

Article number	Article name	GTIN (EAN)	Packaging unit
<u>17141.2</u>	SRK 35/2A/Z BG	4044211186630	20 ST

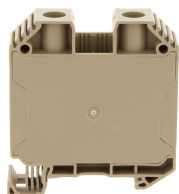
## 17148.2 SMAG 35/6 BG

### ##INVERSE##CONTA-CONNECT



Feed-through terminal, Screw connection, Mounting type: Mounting rail TS 35/7.5, Rated cross-section: 35 mm<sup>2</sup>, Width: 16.1 mm, Colour: Beige

Article number	Article name	GTIN (EAN)	Packaging unit
<u>17143.2</u>	SRK 35/2A/Z/IS BG	4044211186654	20 ST



Feed-through terminal, Screw connection, Mounting type: Mounting rail TS 35/7.5, Rated cross-section: 35 mm<sup>2</sup>, Width: 16.1 mm, Colour: Beige

Article number	Article name	GTIN (EAN)	Packaging unit
<u>17140.2</u>	SRK 35/2A BG	4044211186616	20



Feed-through terminal, Screw connection, Mounting type: Mounting rail TS 35/7.5, Rated cross-section: 35 mm<sup>2</sup>, Width: 16.1 mm, Colour: Beige

Article number	Article name	GTIN (EAN)	Packaging unit
<u>17142.2</u>	SRK 35/2A/IS BG	4044211186647	20



Feed-through terminal, Screw connection, Mounting type: Mounting rail TS 35/7.5, Rated cross-section: 35 mm<sup>2</sup>, Width: 16.1 mm, Colour: Black-yellow

Article number	Article name	GTIN (EAN)	Packaging unit
<u>17144.2</u>	SRK 35/2A/PE BKYE	4044211199722	20 ST