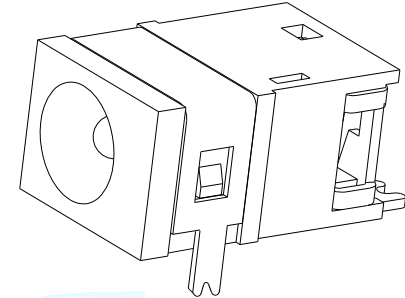
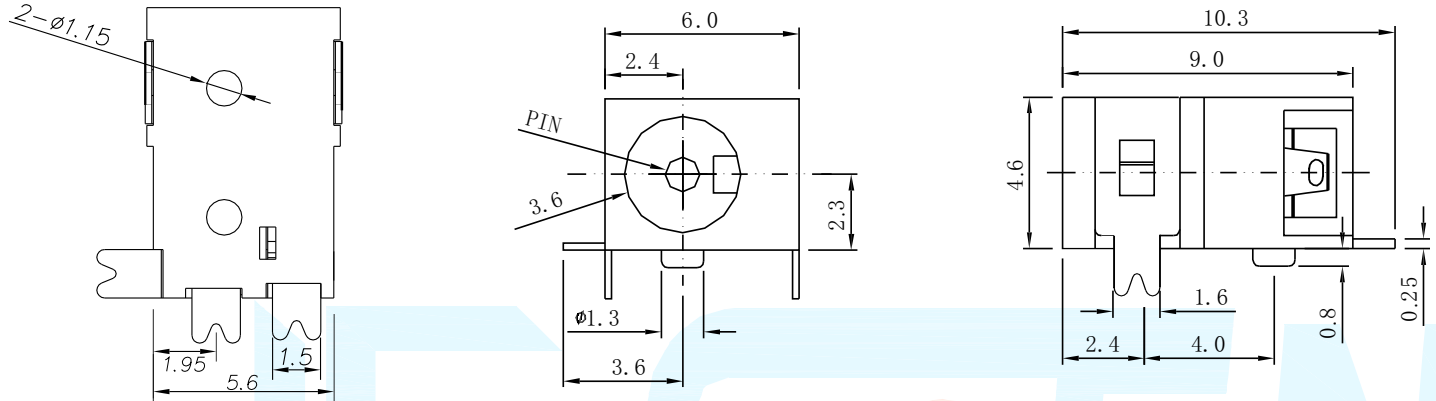


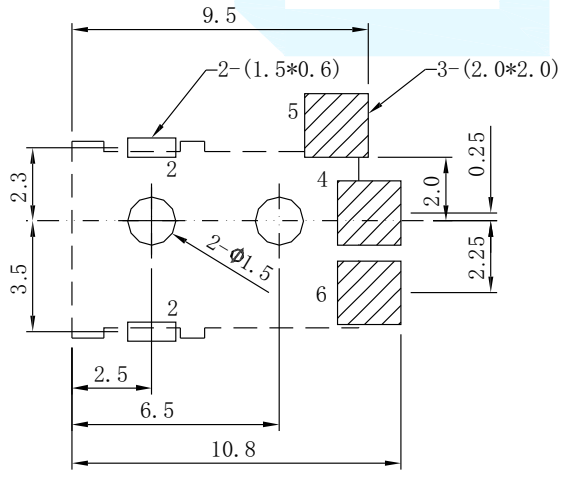
REVISION			
LTR	DESCRIPTION	DATE	APP
A0	NEW RELEASE	03/10/2021	PECK



DC-045A - X13  
 产品型号  
 内芯PIN尺寸 X13=1.3mm

主要技术性能	公差
额定电负荷	DC 30V\0.5A X.±0.20
接触电阻	≤0.03Ω . X±0.10
绝缘电阻	≥100MΩ . XX±0.05
耐压	AC500V(50Hz)/min . XXX±0.02
插拔力	3-20N X°.±5°
使用温度范围	-30~70°C . X°±2°
使用寿命	5000次 . XX°±1°

=PATTERN PROHIBITED AREA  
 =GND AREA  
 =TIN AREA  
 TOLERANCE ±0.05



P. C. B TERMINAL POSITION  
(Top View)

- Note:
- Material:
    - Housing: High temperature thermoplastic,UL94v-0
    - Orbit: High temperature thermoplastic,UL94v-0
    - Contact: copper alloy;  
Gold plated contact area;Tin plated solder area
    - Shell:Stainless;Ni plated allover;  
Gold plated solder area
  - Specification:
    - Current rating: 0.5A Max
    - Voltage rating: 5V DC
    - Dielectric withstanding voltage:  
500V(AC) for 1 min.
    - Contact resistance: 100mΩ Max.
    - Insulation resistance: 1000MΩ min.
    - Temperature range: -25°C~85°C
    - Mating cycle:5000 cycles min
    - Insert force: 40N Max  
Extraction force: 0.5~40N

DIMENSION CLASSIFICATION		台湾碩方精密電子科技有限公司		TAIWAN SOFNG PRECISION ELECTRONIC CO., LTD			
■ : CRITICAL ☒ : MAJOR		TITLE		DC-045A 前插后贴		開關、連接器	
TOLERANCE TABLE		DC电源插座		SOFNG			
.X	± 0.40	PART NO.	DC-045A	SERIES	SD106		
.XX	± 0.25	APPROVED	Peck	DWG NO.	DC-045A		
.XXX	± 0.10	CHECKED	Paul	SCALE	1:1	UNIT	mm
ANGLE	± 2°	DRAWIN	David	REV	AO	SHEET NO.	1/1