

特性 Features

- LED指示灯 LED indicator light
- SCR输出 SCR Output
- 负载电流 Load current : 25A, 40A, 50A, 75A
- 直流驱动 DC Drive
- 介质耐输出有交流过零型和交流随机型两种触发形式 There are two triggering forms for output: AC zero-cross type and AC random type
- 可选IP20安全保护外壳 IP20 Safety Cover Protection(optional)



典型应用 Application

- 适用于高低温箱，塑料机械，孵化机，注油机，空调，照明，喷泉控制器等场合。 Suitable for high and low temperature box, plastic machinery, hatching machine, oiler, air conditioning, lighting, fountain controller and other occasions.

输入参数 Input Specifications (Ta=25°C)

驱动电压范围 Drive Voltage Range	D	4-32VDC
	LD	4-15VDC
	HD	15-32VDC
确保导通电压 Must Turn-on Voltage	D/LD	4VDC
	HD	15VAC
确保关断电压 Must Turn-off Voltage	1VDC	
最大输入电流 Max. Input Current	D/LD	50mA@15VDC
	HD	20mA@32VDC

其他参数 General Specifications (Ta=25°C)

介质耐压 (输入/输出, 50Hz/60Hz) I/O Dielectric Strength (50Hz/60Hz)	输入/输出 Input/Output:4000Vrms 输入、输出/底板 Input, Output/Base:2500Vrms
绝缘电阻(@500VDC) Min. Insulation Resistance @500VDC	1000MΩ
工作温度范围 Ambient Temperature Range(Operating)	-30°C~+80°C
储存温度范围 Ambient Temperature Range(Storage)	-30°C~+100°C
重量(典型值) Weight (Typical)	快接端子 Quick Connection Terminal: 100g 锁螺丝 Screw Terminal: 150g(25A) 锁螺丝 Screw Terminal: 185g(50A/75A)

输出参数 Output Specifications (Ta=25°C)

负载电压范围 Load Voltage Range	240VAC:24-280VAC 480VAC:24-530VAC 600VAC:24-660VAC
最大瞬态电压 Max. Peak Voltage	240VAC:600Vpk 480VAC:1200Vpk 600VAC:1200Vpk
最大断态漏电流(@额定负载电压下) Max. Off-state Leakage Current @ Rated Load Voltage	5mA
最小断态电压指数上升率(dv/dt) Min. Off-State dv/dt @ Max. Rated Voltage	500V/μs
最大浪涌电流(@10ms) Max. 1 Cycle Surge Current @10ms	25A:300A 40A:400A 50A:500A 75A:750A
最大I ² t值(@10ms) Max. I ² t for Fusing @10ms	25A:450A ² s 40A:800A ² s 50A:1250A ² s 75A:2812A ² s
最大导通压降(@额定负载电流下) Max. On-state Voltage Drop @ Rated Load Current	1.5Vrms
最大导通时间 Max. Turn-on Time	过零型 Zero-cross:10ms 随机型 Random-on: 1ms
最大关断时间 Max. Turn-off Time	10ms
使用频率 Operational Frequency Range	47-63Hz

■ 型号命名标准 Model Number Legend

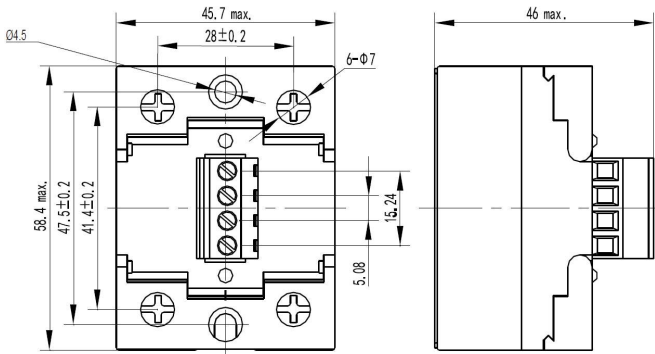
基本型号 Basic Type:	STSID	240	LD	25	R	P	,XXX
负载电压 Load Voltage:	240: 240VAC; 480: 480VAC; 600: 600VAC						
控制电压 Control Voltage:	D: 4-32VDC; LD: 4-15VDC; HD: 15-32VDC						
负载电流 Load Current:	25: 25A; 40: 40A; 50: 50A; 75: 75A						
触发形式 Trigger Type:	无 Blank: 过零导通 Zero-cross; R: 随机导通 Random						
端子型式 Terminal Type:	无 Blank: 快接端子 Quick Connection Terminal; P: 锁螺丝方式 Screw Terminal(IP20)						
特殊特性 Special Characteristic:	168: 防错2.54间隙端子 With error prevention 2.54 pitch terminals; XXX: 客户特殊特性号 Customer Special Feature Number;						

■ 具体型号列表 List of Models

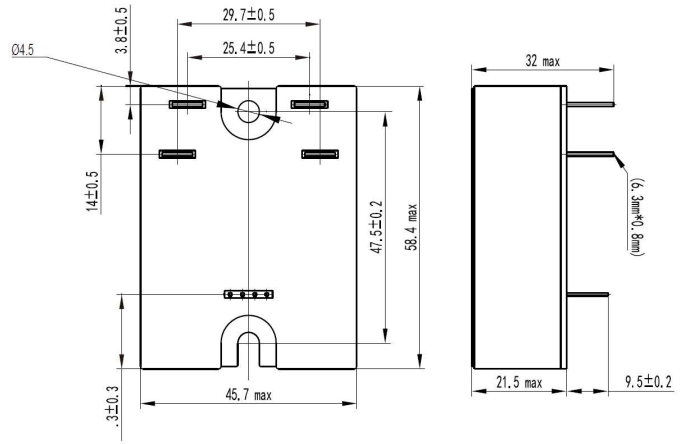
控制电压Control Voltage	负载电压 Load Voltage	25A	40A	50A	75A
LD:4-15VDC	240	STSID240LD25/(168)	STSID240LD40/(168)	STSID240LD50P	STSID240LD75P
		STSID240LD25R/(168)	STSID240LD40R/(168)	STSID240LD50RP	STSID240LD75RP
		STSID240LD25P			
		STSID240LD25RP			
	480	STSID480LD25/(168)	STSID480LD40/(168)	STSID480LD50P	STSID480LD75P
		STSID480LD25R/(168)	STSID480LD40R/(168)	STSID480LD50RP	STSID480LD75RP
		STSID480LD25P			
		STSID480LD25RP			
	600	STSID600LD25/(168)	STSID600LD40/(168)	STSID600HD50P	STSID600HD75P
		STSID600LD25R/(168)	STSID600LD40R/(168)	STSID600HD50RP	STSID600HD75RP
		STSID600LD25P			
		STSID600LD25RP			
HD:15-32VDC	240	STSID240HD25/(168)	STSID240HD40/(168)	STSID240HD50P	STSID240HD75P
		STSID240HD25R/(168)	STSID240HD40R/(168)	STSID240HD50RP	STSID240HD75RP
		STSID240HD25P			
		STSID240HD25RP			
	480	STSID480HD25/(168)	STSID480HD40/(168)	STSID480HD50P	STSID480HD75P
		STSID480HD25R/(168)	STSID480HD40R/(168)	STSID480HD50RP	STSID480HD75RP
		STSID480HD25P			
		STSID480HD25RP			
	600	STSID600HD25/(168)	STSID600HD40/(168)	STSID600HD50P	STSID600HD75P
		STSID600HD25R/(168)	STSID600HD40R/(168)	STSID600HD50RP	STSID600HD75RP
		STSID600HD25P			
		STSID600HD25RP			
D:4-32VDC	240	STSID240D25(168)	STSID240D40(168)	STSID240D50P	STSID240D75P
		STSID240D25R(168)	STSID240D40R(168)	STSID240D50RP	STSID240D75RP
	480	STSID480D25(168)	STSID480D40(168)	STSID480D50P	STSID480D75P
		STSID480D25R(168)	STSID480D40R(168)	STSID480D50RP	STSID480D75RP
	600	STSID600D25(168)	STSID600D40(168)	STSID600D50P	STSID600D75P
		STSID600D25R(168)	STSID600D40R(168)	STSID600D50RP	STSID600D75RP

■ 安装尺寸 Installation Dimensions

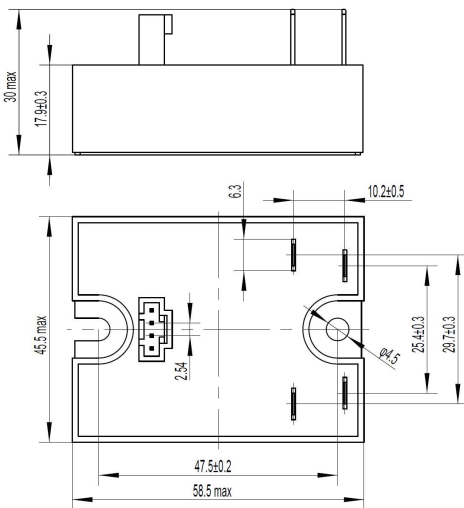
◆ 锁螺丝端子 Screw Terminal:



◆ 快接端子 Quick Connection Terminal:

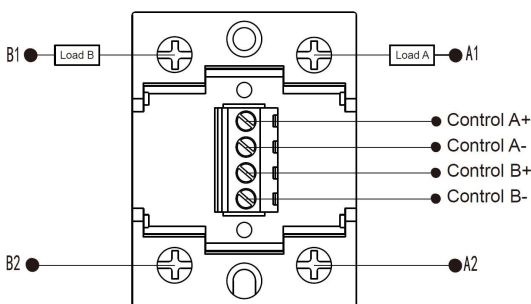


◆ (168)快接端子 Quick Connection Terminal:

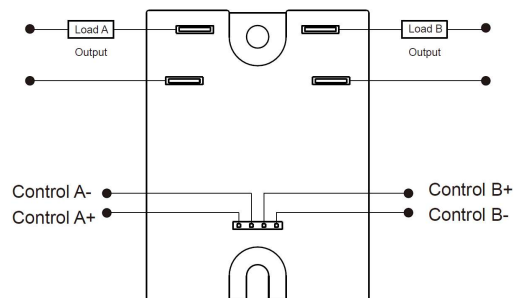


■ 接线图 Wiring Diagram

◆ 锁螺丝端子 Screw Terminal:

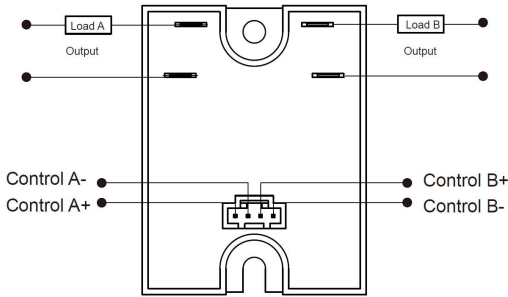


◆ 快接端子 Quick Connection Terminal:

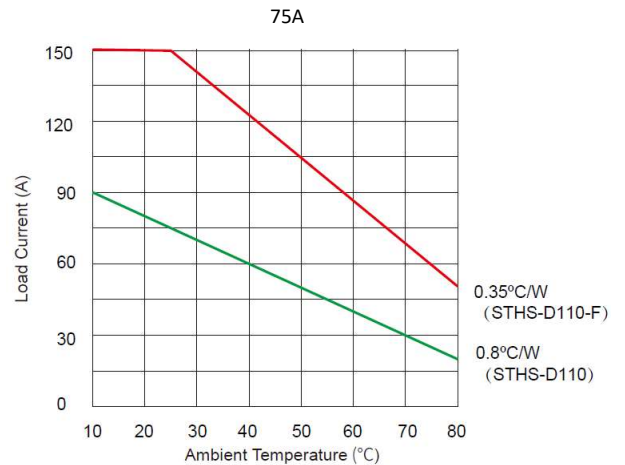
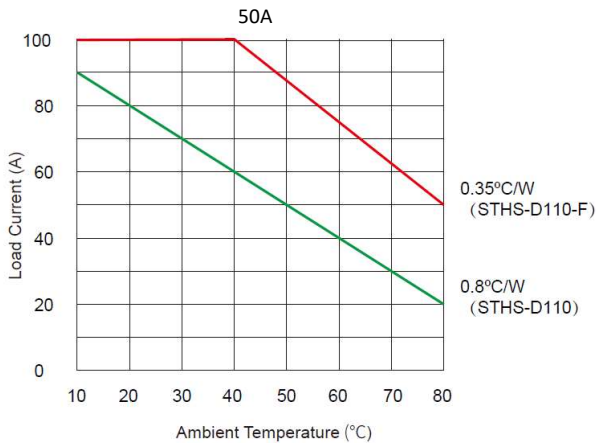
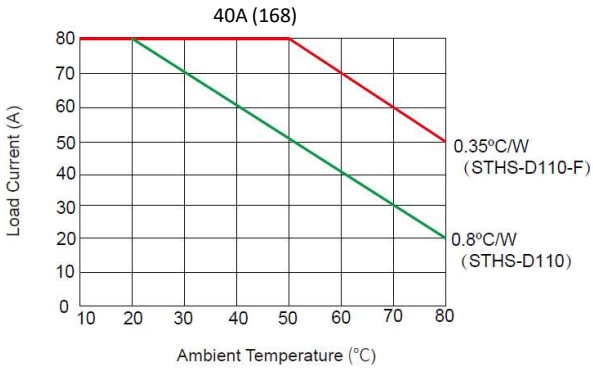
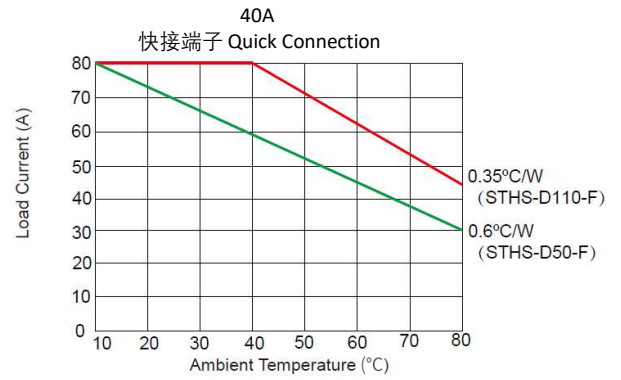
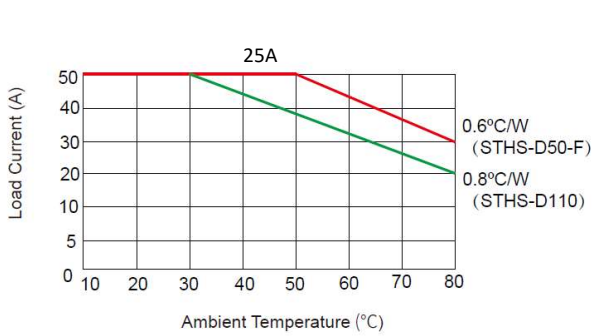


■ 接线图 Wiring Diagram

◆ (168)快接端子 Quick Connection Terminal:

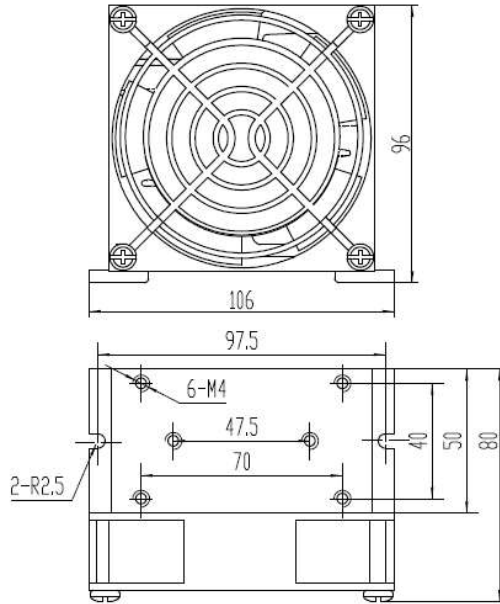


■ 温度曲线 Thermal Derating Curve

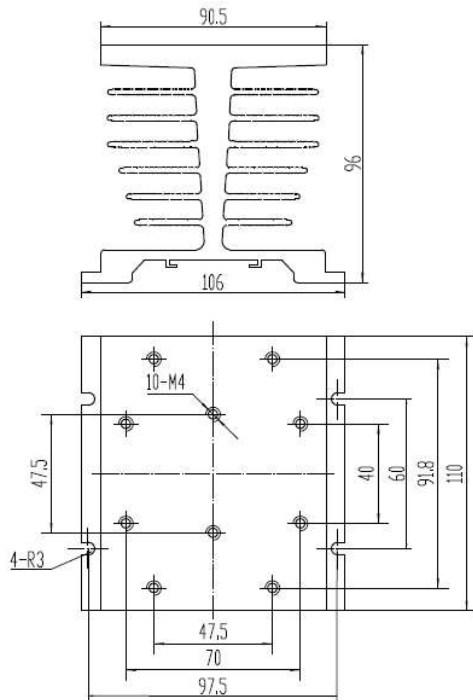


■ 以上温度曲线配置散热器型号如下 The Above Temperature Curve Is Configured With The Following Radiator Models

◆ STHS-D50-F

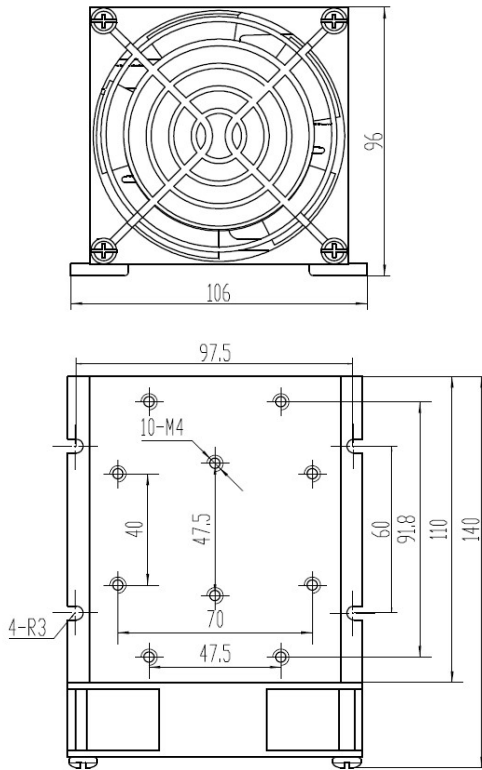


◆ STHS-D110



■ 以上温度曲线配置散热器型号如下 The Above Temperature Curve Is Configured With The Following Radiator Models

◆ STHS-D110-F



■ 使用注意事项 Precautions for Use

1. 继电器工作产生的热量需通过底板散出，需确保继电器底板与散热器接触紧密、安装牢靠，且接触面需加导热垫片或涂覆导热硅脂。The heat generated by the relay needs to be dissipated through the bottom plate. Ensure that the relay bottom plate is in close contact with the heat sink and installed securely, and the contact surface needs to be coated with thermal shims or thermal grease
2. 继电器端子应确保接线牢固，接线松弛会导致产品异常发热，损坏产品。M3端子的推荐安装扭矩为 (0.58 ~ 0.98) N·m，M4端子的推荐安装扭矩为 (0.98 ~ 1.37) N·m。The relay terminal should ensure that the wiring is firm, and the loose wiring will cause abnormal heat and damage the product. The recommended installation torque for M3 terminals is (0.58 ~ 0.98) N·m, and that for M4 terminalsThe recommended installation torque is (0.98 ~ 1.37) N·m
3. 产品工作的环境温度较高时，请参照温度曲线降额使用。When ambient temperature is above 25°C, the maximum load current decreases. See thermal derating curve.

■ 安全警告 Safety warning

1. 使用过程中产品的侧面及底板会发热，请在冷却后再触摸。The side and bottom plate of the product will heat up during use, please touch it after cooling.
2. 安装或使用本产品前，请确保断开所有电源。Before installing or using this product, ensure that all power supplies are disconnected.
3. 请检查所有连接是否妥当后再打开电源。Please check that all connections are correct before turning on the power.

■ 认证标准 Approval standards

认证类型/certification type	测试标准/Test criteria
UL	UL508
	C22.2 No.14-13
TUV	EN 62314:2006
S-MARK	EN 62314:2006