

maXTouch I2C/USB Bridge Boards

1.0 INTRODUCTION

Most maXTouch devices are designed to communicate with host systems using an I²C interface, or occasionally an SPI bus. They may also provide a unidirectional SPI bus for output of debug data (refer to Application Note QTAN0050, *Using the maXTouch Debug Port*). However, PCs do not normally provide I²C or SPI ports as standard.

To facilitate connection of maXTouch devices to PCs, Microchip has developed "bridge boards" that connect to the maXTouch device on one side and to a PC (over a USB link) on the other.

Over the years, there have been a number of different bridge boards (see [Table 1](#)). This document explains the differences between them and notes how they can best be used with maXTouch parts.

TABLE 1: MAXTOUCH BRIDGE BOARDS

Board	Brief Description
5016	Now obsolete
5030 (also known as 9206)	Upgraded 5016, now also obsolete
80146	Enhanced design with link-selectable external supply voltages
80195	Enhanced design with built-in level shifters, standard for Automotive products
D21	Additional circuitry for improved test coverage in a factory environment
HSBB	Much faster design with improved PC-to-Bridge as well as Bridge-to-maXTouch throughput

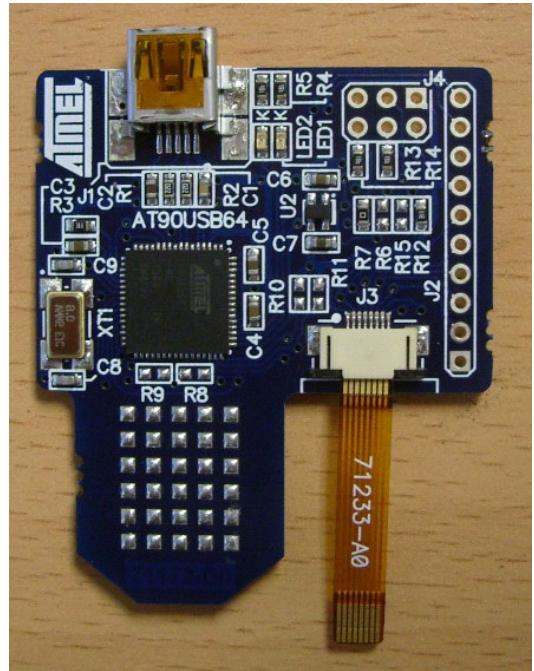
2.0 DETAILED DESCRIPTION

5030/9206

The 5030/9206 has been the standard bridge board for several years, but as of July 2015 is now obsolete. It is based on an AT90USB647 and provides an HID interface over USB to the host system and an I²C master, by default at 200 kHz, but configurable to 100 kHz or 400 kHz.

It can also support SPI communications at moderate data rates (1 MHz or so). Note that maXTouch Studio allows you to connect two bridge boards: one for I²C and one for SPI Debug communications.

It operates at 3.3V and connects to maXTouch systems operating at 3V or more. It can supply modest amount of 3V power (50 mA) to the maXTouch system.

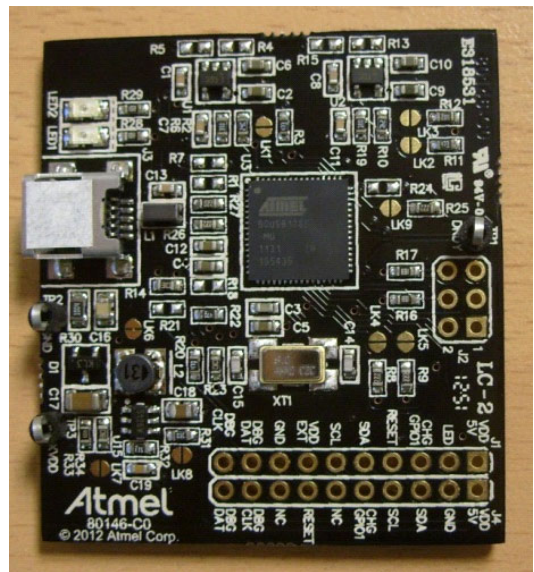


80146

The 80146 is an upgraded bridge board based on the AT90USB1286 chip and provides an HID interface over USB to the host system and an I²C master, by default at 400 kHz.

Like the 9206, it can also support SPI communications at moderate data rates (1 MHz or so). As an HID device, overall throughput is limited to 64 bytes/ms.

The advantage of this unit over the older bridge is that it can interface directly to customer systems operating with IO voltages as low as 1.8V and can supply power at 3.3V, 2.8V or 1.8V (link-selectable). It can also provide a high-voltage XVDD supply for use with S Series devices.

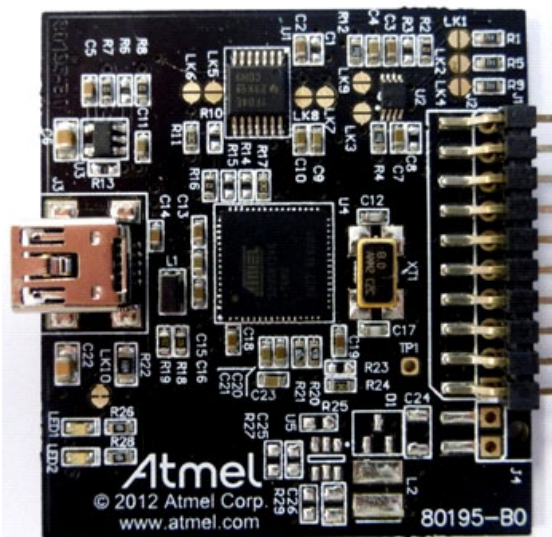


80195 (AUTOMOTIVE BRIDGE)

The 80195 is also based on the AT90USB1286 chip and similarly provides an HID interface over USB to the host system and an I²C interface (plus DBG Clock and Data) to the maXTouch device. The form factor is designed for direct connection to the Automotive EVK boards in a modular fashion, rather than the previous practice of embedding bridge circuitry directly in the EVK PCB. Like the other HID-interface bridges, overall throughput is limited to 64 bytes/ms.

This unit can interface directly to customer systems with IO voltages of between 1.6V and 3.6V by the use of built-in level shifters for both Object-Based Protocol (I²C) and DBG buses. It can also provide a high-voltage XVDD supply for use with S Series devices.

NOTE On the previous boards pin 7 of the 10-way header that connects to the target system is an *output* that may be used to supply the target IO. On the 80195, however, pin 7 is an *input* that must connect to the target IO supply to provide a reference voltage to the level shifters. Therefore when using an 80195 the target must have its own IO supply.



D21

The D21 is a factory-focused bridge board based on the Atmel SAMD21 chip. Like the AVR-based devices, it provides an HID interface over USB to the host system and an I²C master to the maXTouch device. By default, this is at 400 kHz, but Fast-mode Plus at up to 1 MHz is also supported. It does not support SPI.

The advantage of the D21 unit is that it includes additional functionality for factory testing, such as monitoring the current drawn on the power rails and checking the voltage that the CHG line is being driven to. The factory “maXTouch Analyzer” software makes full use of this added functionality. The firmware in the board is optimized to minimize the factory test time (in combination with the MTA tool).

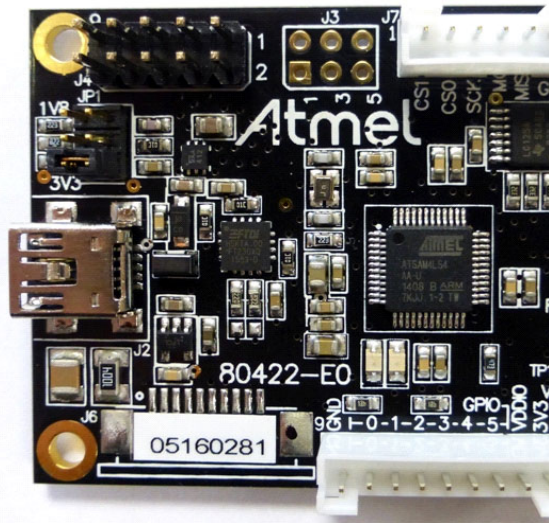


HSSB

The High-Speed Bridge Board (HSBB) is a major upgrade to Bridge Board capabilities to work with the latest generations of maXTouch devices, which have node counts and interface speeds far beyond those in use when the original HID-based bridge boards were designed.

The HSBB uses a SAM4L chip to provide both high-speed I²C communications (1 MHz or more) and SPI communications (up to 7 MHz) to the maXTouch chip, with “backhaul” data rates to the PC of up to 3 MHz. To achieve these speeds, the HSBB uses an FTDI chip to establish a virtual COM port connection over the USB bus instead of the HID interface. This does mean that it needs to use a different Bridge Client with maXTouch Studio than the other boards, and requires installation of a FTDI Windows device driver, but otherwise operation with maXTouch Studio is the same as other bridges.

The HSBB can interface directly to customer systems operating with IO voltages as low as 1.8V and can supply IO power at 3.3V, 2.7V or 1.8V (link-selectable).



3.0 RECOMMENDATIONS

3.1 Legacy Devices

Pretty much any bridge board will work successfully with older (E and S series) parts, but the 80146 bridge is recommended for new purchases or, alternatively, the HSBB for future-proofing a customer's investment.

3.2 Automotive Devices

For T series parts, the EVK boards are specifically designed to work with the 80195 board. However, better performance will be gained by using an HSBB instead, especially for SPI interface designs.

3.3 Factory Test

The D21 is specifically designed for factory test usage. The only reason not to use it would be designs using an SPI interface.

3.4 Future and SPI Devices

For the future, the HSBB will gradually become the standard part, due to its much better throughput. However, a few features, such as reflashing over SPI, are still in development.

3.5 Comparison Chart

Feature	80146	80195	D21	HSBB
I ² C interface	Yes (400 kHz)	Yes (400 kHz)	Yes (1 MHz)	Yes (1 MHz plus)
SPI interface	Yes (1 MHz)	No	No	Yes (6 MHz)
SPI Debug interface	Yes (1 MHz)	Yes (1 MHz)	Yes (1 MHz)	Yes (6 MHz)
PC Interface type	HID	HID	HID	Virtual COM
PC Interface speed	512 kbps	512 kbps	512 kbps	2 Mbps plus
IO voltage	Link-selectable 1.8V, 2.8V, 3.3V	Built-in level shifters 1.6V to 3.6V		Link-selectable 1.8V, 2.7V, 3.3V
Purpose	Legacy devices	Automotive (I ² C)	Factory test (ADCs etc)	Automotive (SPI) High throughput

Note: The 5030/9206 board is not listed as it is now obsolete

APPENDIX A: REVISION HISTORY

Revision A (June 2017)

Initial edition

Note the following details of the code protection feature on Microchip devices:

- Microchip products meet the specification contained in their particular Microchip Data Sheet.
- Microchip believes that its family of products is one of the most secure families of its kind on the market today, when used in the intended manner and under normal conditions.
- There are dishonest and possibly illegal methods used to breach the code protection feature. All of these methods, to our knowledge, require using the Microchip products in a manner outside the operating specifications contained in Microchip's Data Sheets. Most likely, the person doing so is engaged in theft of intellectual property.
- Microchip is willing to work with the customer who is concerned about the integrity of their code.
- Neither Microchip nor any other semiconductor manufacturer can guarantee the security of their code. Code protection does not mean that we are guaranteeing the product as “unbreakable.”

Code protection is constantly evolving. We at Microchip are committed to continuously improving the code protection features of our products. Attempts to break Microchip's code protection feature may be a violation of the Digital Millennium Copyright Act. If such acts allow unauthorized access to your software or other copyrighted work, you may have a right to sue for relief under that Act.

Information contained in this publication regarding device applications and the like is provided only for your convenience and may be superseded by updates. It is your responsibility to ensure that your application meets with your specifications. MICROCHIP MAKES NO REPRESENTATIONS OR WARRANTIES OF ANY KIND WHETHER EXPRESS OR IMPLIED, WRITTEN OR ORAL, STATUTORY OR OTHERWISE, RELATED TO THE INFORMATION, INCLUDING BUT NOT LIMITED TO ITS CONDITION, QUALITY, PERFORMANCE, MERCHANTABILITY OR FITNESS FOR PURPOSE. Microchip disclaims all liability arising from this information and its use. Use of Microchip devices in life support and/or safety applications is entirely at the buyer's risk, and the buyer agrees to defend, indemnify and hold harmless Microchip from any and all damages, claims, suits, or expenses resulting from such use. No licenses are conveyed, implicitly or otherwise, under any Microchip intellectual property rights unless otherwise stated.

Microchip received ISO/TS-16949:2009 certification for its worldwide headquarters, design and wafer fabrication facilities in Chandler and Tempe, Arizona; Gresham, Oregon and design centers in California and India. The Company's quality system processes and procedures are for its PIC[®] MCUs and dsPIC[®] DSCs, KEELOQ[®] code hopping devices, Serial EEPROMs, microperipherals, nonvolatile memory and analog products. In addition, Microchip's quality system for the design and manufacture of development systems is ISO 9001:2000 certified.

**QUALITY MANAGEMENT SYSTEM
CERTIFIED BY DNV
= ISO/TS 16949 =**

Trademarks

The Microchip name and logo, the Microchip logo, AnyRate, AVR, AVR logo, AVR Freaks, BeaconThings, BitCloud, CryptoMemory, CryptoRF, dsPIC, FlashFlex, flexPWR, Helder, JukeBlox, KEELOQ, KEELOQ logo, Klear, LANCheck, LINK MD, maXStylus, maXTouch, MediaLB, megaAVR, MOST, MOST logo, MPLAB, OptoLyzer, PIC, picoPower, PICSTART, PIC32 logo, Prochip Designer, QTouch, RightTouch, SAM-BA, SpyNIC, SST, SST Logo, SuperFlash, tinyAVR, UNI/O, and XMEGA are registered trademarks of Microchip Technology Incorporated in the U.S.A. and other countries.

ClockWorks, The Embedded Control Solutions Company, EtherSynch, Hyper Speed Control, HyperLight Load, IntelliMOS, mTouch, Precision Edge, and Quiet-Wire are registered trademarks of Microchip Technology Incorporated in the U.S.A.

Adjacent Key Suppression, AKS, Analog-for-the-Digital Age, Any Capacitor, AnyIn, AnyOut, BodyCom, chipKIT, chipKIT logo, CodeGuard, CryptoAuthentication, CryptoCompanion, CryptoController, dsPICDEM, dsPICDEM.net, Dynamic Average Matching, DAM, ECAN, EtherGREEN, In-Circuit Serial Programming, ICSP, Inter-Chip Connectivity, JitterBlocker, KlearNet, KlearNet logo, Mindi, MiWi, motorBench, MPASM, MPF, MPLAB Certified logo, MPLIB, MPLINK, MultiTRAK, NetDetach, Omniscient Code Generation, PICDEM, PICDEM.net, PICkit, PICtail, PureSilicon, QMatrix, RightTouch logo, REAL ICE, Ripple Blocker, SAM-ICE, Serial Quad I/O, SMART-I.S., SQI, SuperSwitcher, SuperSwitcher II, Total Endurance, TSHARC, USBCheck, VariSense, ViewSpan, WiperLock, Wireless DNA, and ZENA are trademarks of Microchip Technology Incorporated in the U.S.A. and other countries.

SQTP is a service mark of Microchip Technology Incorporated in the U.S.A.

Silicon Storage Technology is a registered trademark of Microchip Technology Inc. in other countries.

GestIC is a registered trademark of Microchip Technology Germany II GmbH & Co. KG, a subsidiary of Microchip Technology Inc., in other countries.

All other trademarks mentioned herein are property of their respective companies.

© 2017, Microchip Technology Incorporated, All Rights Reserved.

ISBN: 978-1-5224-1861-0

AMERICAS

Corporate Office
2355 West Chandler Blvd.
Chandler, AZ 85224-6199
Tel: 480-792-7200
Fax: 480-792-7277
Technical Support:
<http://www.microchip.com/support>
Web Address:
www.microchip.com

Atlanta
Duluth, GA
Tel: 678-957-9614
Fax: 678-957-1455

Austin, TX
Tel: 512-257-3370

Boston
Westborough, MA
Tel: 774-760-0087
Fax: 774-760-0088

Chicago
Itasca, IL
Tel: 630-285-0071
Fax: 630-285-0075

Cleveland
Independence, OH
Tel: 216-447-0464
Fax: 216-447-0643

Dallas
Addison, TX
Tel: 972-818-7423
Fax: 972-818-2924

Detroit
Novi, MI
Tel: 248-848-4000

Houston, TX
Tel: 281-894-5983

Indianapolis
Noblesville, IN
Tel: 317-773-8323
Fax: 317-773-5453

Los Angeles
Mission Viejo, CA
Tel: 949-462-9523
Fax: 949-462-9608

New York, NY
Tel: 631-435-6000

San Jose, CA
Tel: 408-735-9110

Canada - Toronto
Tel: 905-673-0699
Fax: 905-673-6509

ASIA/PACIFIC

Asia Pacific Office
Suites 3707-14, 37th Floor
Tower 6, The Gateway
Harbour City, Kowloon

Hong Kong
Tel: 852-2943-5100
Fax: 852-2401-3431

Australia - Sydney
Tel: 61-2-9868-6733
Fax: 61-2-9868-6755

China - Beijing
Tel: 86-10-8569-7000
Fax: 86-10-8528-2104

China - Chengdu
Tel: 86-28-8665-5511
Fax: 86-28-8665-7889

China - Chongqing
Tel: 86-23-8980-9588
Fax: 86-23-8980-9500

China - Dongguan
Tel: 86-769-8702-9880

China - Hangzhou
Tel: 86-571-8792-8115
Fax: 86-571-8792-8116

China - Hong Kong SAR
Tel: 852-2943-5100
Fax: 852-2401-3431

China - Nanjing
Tel: 86-25-8473-2460
Fax: 86-25-8473-2470

China - Qingdao
Tel: 86-532-8502-7355
Fax: 86-532-8502-7205

China - Shanghai
Tel: 86-21-5407-5533
Fax: 86-21-5407-5066

China - Shenyang
Tel: 86-24-2334-2829
Fax: 86-24-2334-2393

China - Shenzhen
Tel: 86-755-8864-2200
Fax: 86-755-8203-1760

China - Wuhan
Tel: 86-27-5980-5300
Fax: 86-27-5980-5118

China - Xian
Tel: 86-29-8833-7252
Fax: 86-29-8833-7256

ASIA/PACIFIC

China - Xiamen
Tel: 86-592-2388138
Fax: 86-592-2388130

China - Zhuhai
Tel: 86-756-3210040
Fax: 86-756-3210049

India - Bangalore
Tel: 91-80-3090-4444
Fax: 91-80-3090-4123

India - New Delhi
Tel: 91-11-4160-8631
Fax: 91-11-4160-8632

India - Pune
Tel: 91-20-3019-1500

Japan - Osaka
Tel: 81-6-6152-7160
Fax: 81-6-6152-9310

Japan - Tokyo
Tel: 81-3-6880-3770
Fax: 81-3-6880-3771

Korea - Daegu
Tel: 82-53-744-4301
Fax: 82-53-744-4302

Korea - Seoul
Tel: 82-2-554-7200
Fax: 82-2-558-5932 or
82-2-558-5934

Malaysia - Kuala Lumpur
Tel: 60-3-6201-9857
Fax: 60-3-6201-9859

Malaysia - Penang
Tel: 60-4-227-8870
Fax: 60-4-227-4068

Philippines - Manila
Tel: 63-2-634-9065
Fax: 63-2-634-9069

Singapore
Tel: 65-6334-8870
Fax: 65-6334-8850

Taiwan - Hsin Chu
Tel: 886-3-5778-366
Fax: 886-3-5770-955

Taiwan - Kaohsiung
Tel: 886-7-213-7828

Taiwan - Taipei
Tel: 886-2-2508-8600
Fax: 886-2-2508-0102

Thailand - Bangkok
Tel: 66-2-694-1351
Fax: 66-2-694-1350

EUROPE

Austria - Wels
Tel: 43-7242-2244-39
Fax: 43-7242-2244-393

Denmark - Copenhagen
Tel: 45-4450-2828
Fax: 45-4485-2829

France - Paris
Tel: 33-1-69-53-63-20
Fax: 33-1-69-30-90-79

Germany - Dusseldorf
Tel: 49-2129-3766400

Germany - Karlsruhe
Tel: 49-721-625370

Germany - Munich
Tel: 49-89-627-144-0
Fax: 49-89-627-144-44

Italy - Milan
Tel: 39-0331-742611
Fax: 39-0331-466781

Italy - Venice
Tel: 39-049-7625286

Netherlands - Drunen
Tel: 31-416-690399
Fax: 31-416-690340

Poland - Warsaw
Tel: 48-22-3325737

Spain - Madrid
Tel: 34-91-708-08-90
Fax: 34-91-708-08-91

Sweden - Stockholm
Tel: 46-8-5090-4654

UK - Wokingham
Tel: 44-118-921-5800
Fax: 44-118-921-5820