

---

# ***IGLOO2 HPMS***

## ***Embedded SRAM (eSRAM) Configuration***



---

# Table of Contents

---

Configuration Options .....	3
Configuration .....	3
Simulation .....	4
<b>A Product Support .....</b>	<b>5</b>
Customer Service .....	5
Customer Technical Support Center .....	5
Technical Support .....	5
Website .....	5
Contacting the Customer Technical Support Center .....	5
ITAR Technical Support .....	6

# Configuration Options

IGLOO2 FPGAs have two embedded SRAM (eSRAM) blocks of 32 Kbytes each for data read and write operations. These eSRAM blocks are interfaced through the eSRAM controller, which is part of the HPMS.

You can access the eSRAM controller from the following masters:

- FIC\_0 User Fabric Master
- FIC\_1 User Fabric Master
- HPDMA
- PDMA

## Configuration

You do not need to configure the eSRAM for your design.

In order to use the eSRAM, you must use System Builder to build a System Builder block that includes the eSRAM.

From the Device Features page of System Builder, check the HPMS On-chip SRAM (eSRAM) checkbox, as shown in [Figure 1](#).

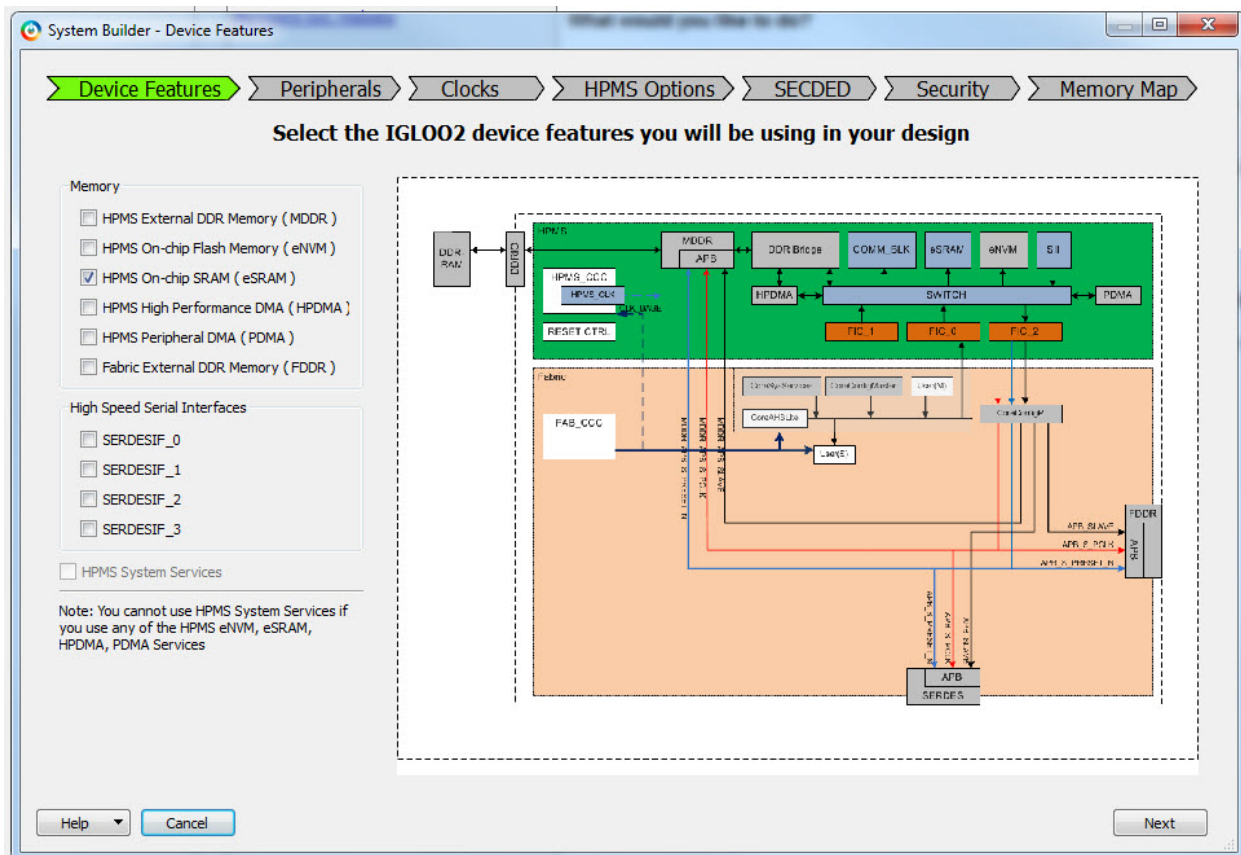


Figure 1 • System Builder Device Features Page

System Builder builds a block that exposes a top level AHB Master port. Connect your Fabric Master to this port to access the eSRAM directly.

The Fabric Master accesses the eSRAM via FIC\_0 or FIC\_1. Include the Fabric Master in your FIC\_0 or FIC\_1 Subsystem (Figure 2). Review the [System Builder User's Guide](#) for details.

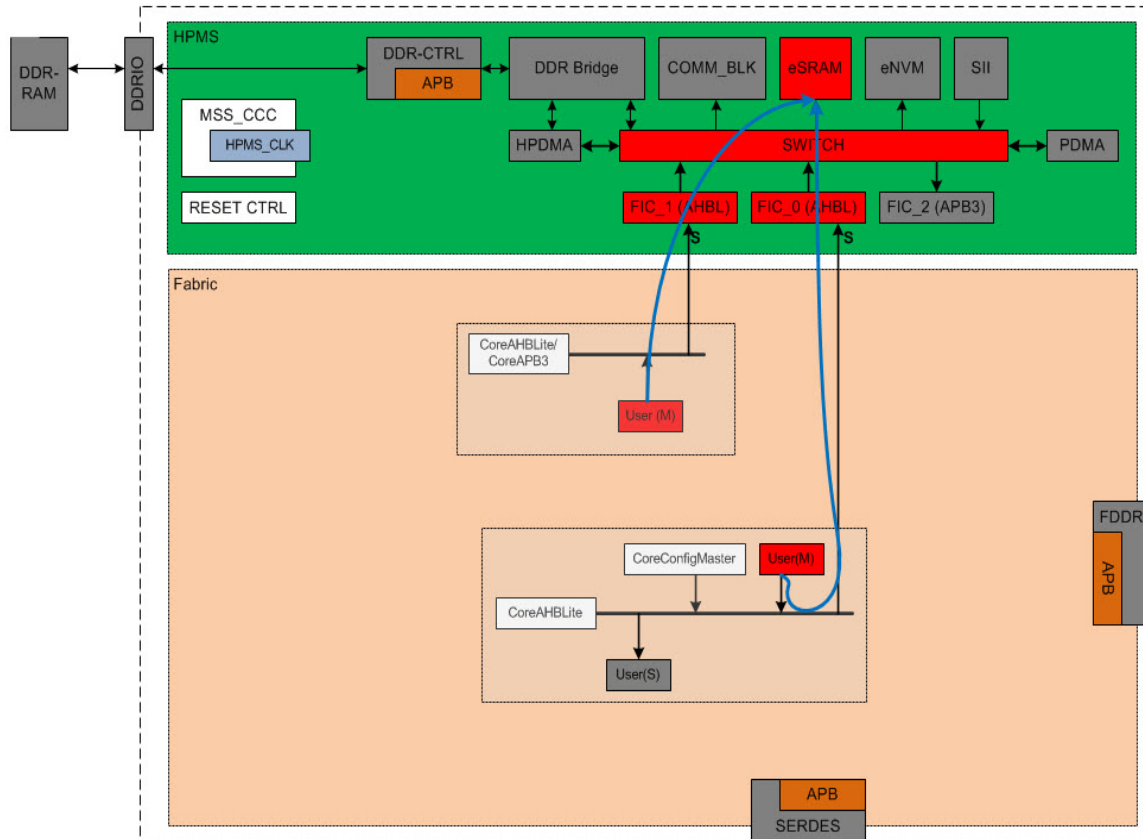


Figure 2 • User Fabric Masters Accessing HPMS eSRAM via FIC\_0 and FIC\_1

## Simulation

The eSRAM's address space is byte, half-word and word addressable.

The address range of the eSRAM is:

- SECEDED Off: 0x20000000 – 0x20013FFF
- SECEDED On: 0x20000000 – 0x2000FFFF

## A – Product Support

---

Microsemi SoC Products Group backs its products with various support services, including Customer Service, Customer Technical Support Center, a website, electronic mail, and worldwide sales offices. This appendix contains information about contacting Microsemi SoC Products Group and using these support services.

### Customer Service

Contact Customer Service for non-technical product support, such as product pricing, product upgrades, update information, order status, and authorization.

From North America, call 800.262.1060

From the rest of the world, call 650.318.4460

Fax, from anywhere in the world, 408.643.6913

### Customer Technical Support Center

Microsemi SoC Products Group staffs its Customer Technical Support Center with highly skilled engineers who can help answer your hardware, software, and design questions about Microsemi SoC Products. The Customer Technical Support Center spends a great deal of time creating application notes, answers to common design cycle questions, documentation of known issues, and various FAQs. So, before you contact us, please visit our online resources. It is very likely we have already answered your questions.

### Technical Support

Visit the Customer Support website ([www.microsemi.com/soc/support/search/default.aspx](http://www.microsemi.com/soc/support/search/default.aspx)) for more information and support. Many answers available on the searchable web resource include diagrams, illustrations, and links to other resources on the website.

### Website

You can browse a variety of technical and non-technical information on the SoC home page, at [www.microsemi.com/soc](http://www.microsemi.com/soc).

### Contacting the Customer Technical Support Center

Highly skilled engineers staff the Technical Support Center. The Technical Support Center can be contacted by email or through the Microsemi SoC Products Group website.

#### Email

You can communicate your technical questions to our email address and receive answers back by email, fax, or phone. Also, if you have design problems, you can email your design files to receive assistance. We constantly monitor the email account throughout the day. When sending your request to us, please be sure to include your full name, company name, and your contact information for efficient processing of your request.

The technical support email address is [soc\\_tech@microsemi.com](mailto:soc_tech@microsemi.com).

## My Cases

Microsemi SoC Products Group customers may submit and track technical cases online by going to [My Cases](#).

## Outside the U.S.

Customers needing assistance outside the US time zones can either contact technical support via email ([soc\\_tech@microsemi.com](mailto:soc_tech@microsemi.com)) or contact a local sales office. [Sales office listings](#) can be found at [www.microsemi.com/soc/company/contact/default.aspx](http://www.microsemi.com/soc/company/contact/default.aspx).

## ITAR Technical Support

For technical support on RH and RT FPGAs that are regulated by International Traffic in Arms Regulations (ITAR), contact us via [soc\\_tech\\_itar@microsemi.com](mailto:soc_tech_itar@microsemi.com). Alternatively, within [My Cases](#), select **Yes** in the ITAR drop-down list. For a complete list of ITAR-regulated Microsemi FPGAs, visit the [ITAR](#) web page.



**Microsemi**

**Microsemi Corporate Headquarters**  
One Enterprise, Aliso Viejo CA 92656 USA  
Within the USA: +1 (949) 380-6100  
Sales: +1 (949) 380-6136  
Fax: +1 (949) 215-4996

Microsemi Corporation (NASDAQ: MSCC) offers a comprehensive portfolio of semiconductor solutions for: aerospace, defense and security; enterprise and communications; and industrial and alternative energy markets. Products include high-performance, high-reliability analog and RF devices, mixed signal and RF integrated circuits, customizable SoCs, FPGAs, and complete subsystems. Microsemi is headquartered in Aliso Viejo, Calif. Learn more at [www.microsemi.com](http://www.microsemi.com).

© 2013 Microsemi Corporation. All rights reserved. Microsemi and the Microsemi logo are trademarks of Microsemi Corporation. All other trademarks and service marks are the property of their respective owners.