
PD69200 to PD69220 Conversion

Introduction

This application note provides guidelines for using the PD69220 device on a Printed Circuit Board (PCB) that was designed for the PD69200 device. The following aspects must be considered:

- Host–PoE controller communication management
 - UART or I²C address selection
- PCB footprint
 - Solder paste mask

Using the 16-byte communication protocol, this application note also defines a method to determine which PoE controller (PD69200 or PD69220) is installed on a switch.

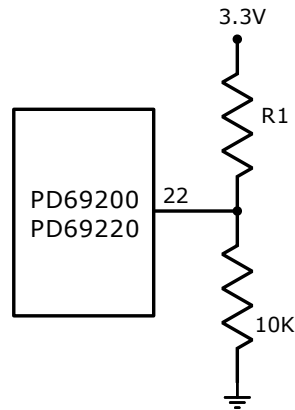
Table of Contents

Introduction.....	1
1. Host–PoE Controller Communication Management.....	3
2. PD69200 QFN vs. PD69220 LGA Package.....	4
2.1. Package Construction.....	4
2.2. ePad.....	5
2.3. Pins.....	5
2.4. Wettable Flanks.....	5
3. PCB Footprint.....	7
3.1. PD69200 Package Outline Drawing.....	7
3.2. PD69220 Package Outline Drawing.....	8
3.3. Recommended PCB Layout.....	9
4. Identification of PoE Controller.....	13
4.1. Under Normal Operation.....	13
4.2. Under a Fault Condition.....	14
5. Revision History.....	15
Microchip Information.....	16
The Microchip Website.....	16
Product Change Notification Service.....	16
Customer Support.....	16
Microchip Devices Code Protection Feature.....	16
Legal Notice.....	16
Trademarks.....	17
Quality Management System.....	18
Worldwide Sales and Service.....	19

1. Host-PoE Controller Communication Management

The following figure and table show that UART (set to 19200 bps) or I²C (up to 400 KHz) communication between the host CPU and PoE controllers are managed by setting the PD69220/PD69220 address pin number 22 (I2C_ADDR).

Figure 1-1. PD69200/PD69220 Communication Management



The following table lists the specific value of R to choose UART or I²C and to set the address.

Table 1-1. Serial Communication Configuration

I ² C Address Hexadecimal	R1-K Ω (1%)	
	PD69200	PD69220
UART	N.C.	N.C.
0x4	97.6	147
0x8	53.6	86.6
0xC	35.7	57.6
0x10	25.5	43.2
0x14	19.1	34
0x18	14.7	26.7
0x1C	11.3	22.1
0x20	8.87	18.2
0x24	6.81	15.4
0x28	5.23	13
0x2C	3.92	11
0x30	2.80	9.31
0x34	1.87	7.87
0x38	1.02	6.49
0x3C	0.324	5.49

Note: All other parameters of resistor R1 (size, power, footprint, and so on) are the same in all the controllers, except in the value.

2. PD69200 QFN vs. PD69220 LGA Package

The PD69200 device is packaged in a 32 pin 5 mm × 5 mm QFN package and the PD69220 device is packaged in a 32 pin 5 mm × 5 mm LGA. The pinout of the two devices are identical. However, there are physical differences in the thermal pad and pins. Additionally, there are differences in the physical package construction of the QFN vs. LGA. Due to these differences, while using the PD69220 device on a PCB that was designed for the PD69200, the paste mask or stencil must be optimized for use with the PD69220 device.

Section 3. [PCB Footprint](#) gives recommendations for a revised stencil for PD69220, if the original PCB used the footprint for PD69200 that was recommended in the PD69200 data sheet. If the footprint in the PD69200 data sheet is not used, follow the general principles outlined in section 3. [PCB Footprint](#) to optimize the stencil based on the footprint that was used.

See the *PD69220 Data Sheet* for a footprint recommendation if the design is a new PCB that was designed for the PD69220 unit.

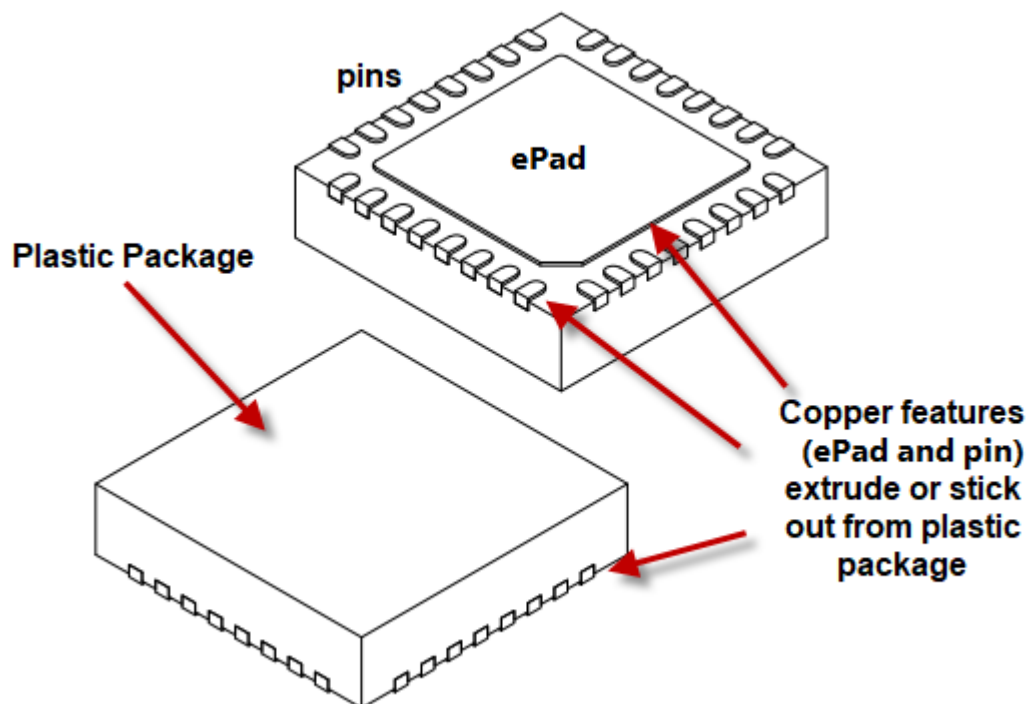
2.1 Package Construction

This section provides a general overview of the physical differences between the PD69200 QFN and the PD69220 LGA.

2.1.1 PD69200 QFN

The PD69200 physical silicon die is mounted directly on a copper lead frame. The IC and lead frame are encapsulated in plastic. In this case, the bottom surface is plastic and the ePad and copper pin features extrude (stick out) from the plastic surface by the dimension A1 (a maximum of 0.05 mm). See the following figure.

Figure 2-1. PD69200 QFN Construction



2.1.2 PD69220 LGA

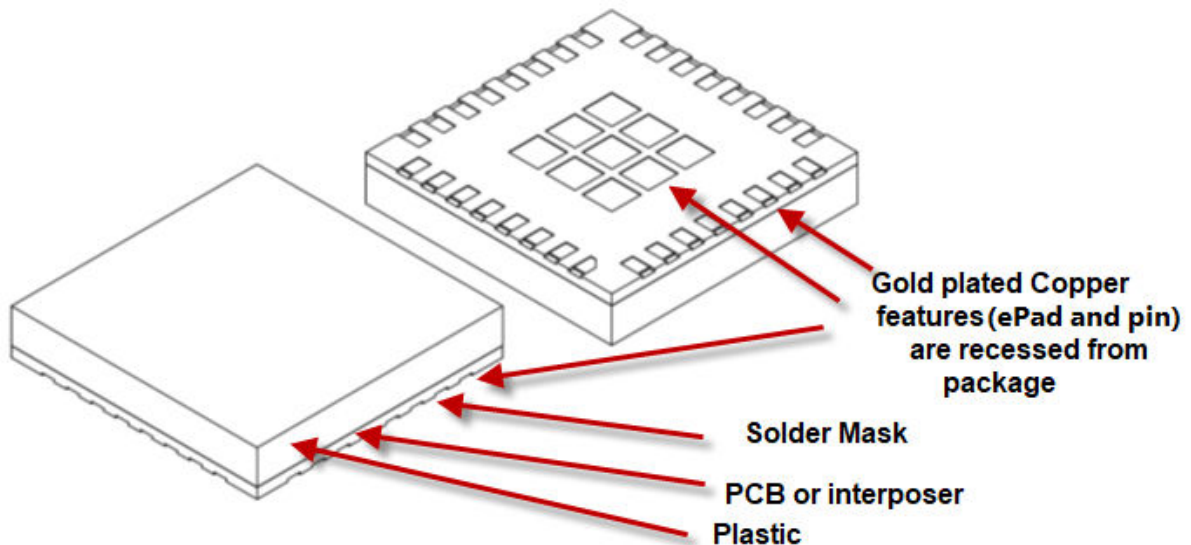
To make the PD69220 pinout identical to PD69200, an interposer or “small PCB” is used in the package construction. The PD69220 physical silicon die is mounted onto the interposer. The interposer routes to the package pins in such

a manner that the pinout between PD69200 and PD69220 is identical. The interposer and die are encapsulated in plastic. The bottom surface of the package is the solder mask associated with the interposer.

Due to this construction, the ePad and pins, rather than extruding from the package surface, are actually recessed into the package surface (like a cave) by the thickness of the solder mask.

The ePad and pins are copper electroplated with nickel-gold. See the following figure.

Figure 2-2. PD69220 LGA Construction



2.2 ePad

Figure 2-1 and Figure 2-2 show the difference in the ePad construction. The PD69220 ePad is a single 3.5 mm × 3.5 mm square, whereas ePads in the PD69200 device are nine 0.6 mm × 0.6 mm squares.

The nine squares are electrically connected to each other.

2.3 Pins

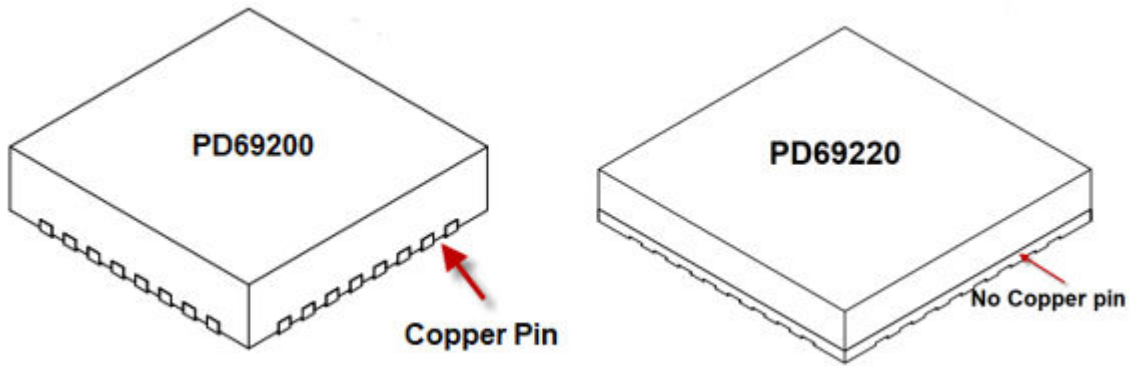
The following table lists the dimensions for PD69200 and PD69220 pins.

Table 2-1. Pin Dimensions

Device	Dimension	Minimum (mm)	Nom (mm)	Maximum (mm)
PD69200	Length (L)	0.30	0.40	0.50
	Width (b)	0.18	0.25	0.30
PD69220	Length (L)	0.30	0.35	0.40
	Width (b)	0.20	0.25	0.30

2.4 Wettable Flanks

There is no copper on PD69220 package side and it does not have a wettable flank. While the PD69200 unit does have a copper feature on the package side, no effort is taken to prevent oxidation. Therefore, this package is also considered to not have a wettable flank. See the following figure.



3. PCB Footprint

Microchip has provided a recommended footprint for PD69220 in the device datasheet and in this document. These recommendations apply when the Microchip recommended footprint for PD69200 is used on the PCB and the customer is mounting a PD69220 using the footprint designed for the PD69200 device.

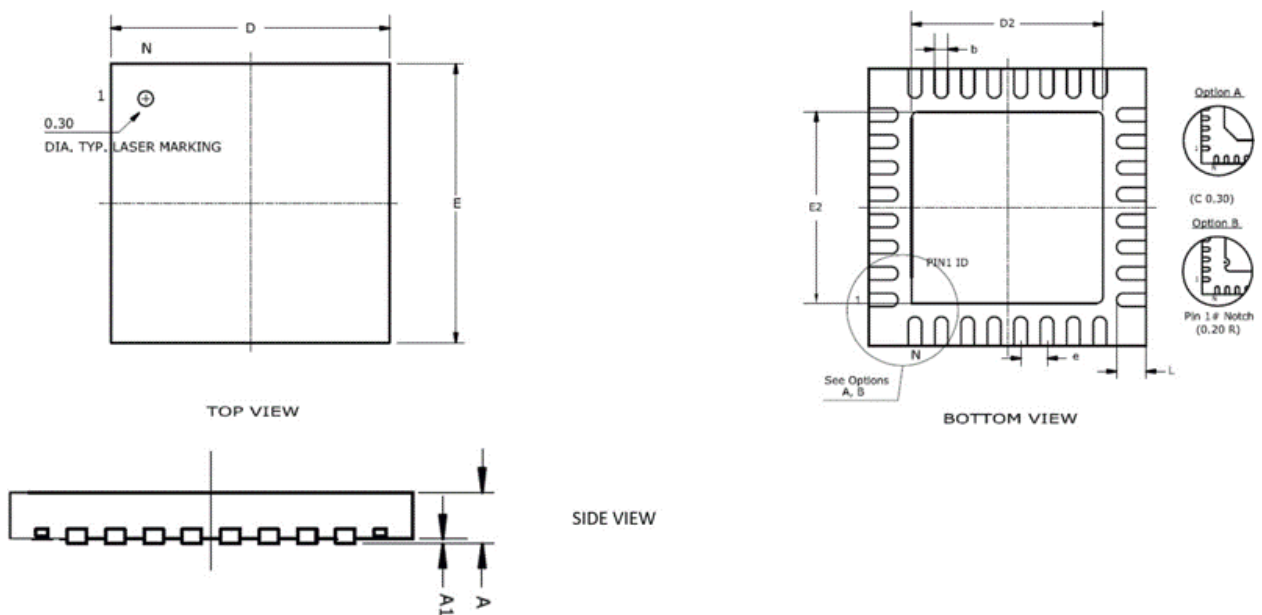
If the customer has used an alternate footprint for the PD69200 device, then the general principles discussed must be applied to develop an optimized stencil based on the actual PD69200 footprint used.

3.1 PD69200 Package Outline Drawing

The following figure shows the package outline drawing of the PD69200 device.

Note: For the most current package drawings, see the Microchip Packaging Specification located at www.microchip.com/packaging

Figure 3-1. PD69200 Package Outline Drawing (32 Pin QFN 5 mm × 5 mm)



The following table lists the dimensions and measurements of the PD69200 package.

Table 3-1. PD69200 Package Outline Dimensions and Measurements

Dimension	Millimeters		Inches	
	Min.	Max.	Min.	Max.
A	0.80	1.00	0.031	0.039
A1	0.00	0.05	0	0.002
e	0.50 BSC	—	0.02 BSC	—
L	0.30	0.50	0.012	0.02
b	0.18	0.30	0.007	0.012
D2	3.50	3.70	0.138	0.147
E2	3.50	3.70	0.138	0.147
D	5.00 BSC	—	0.197 BSC	—

.....continued

Dimension	Millimeters		Inches	
	Min.	Max.	Min.	Max.
E	5.00 BSC	—	0.197 BSC	—

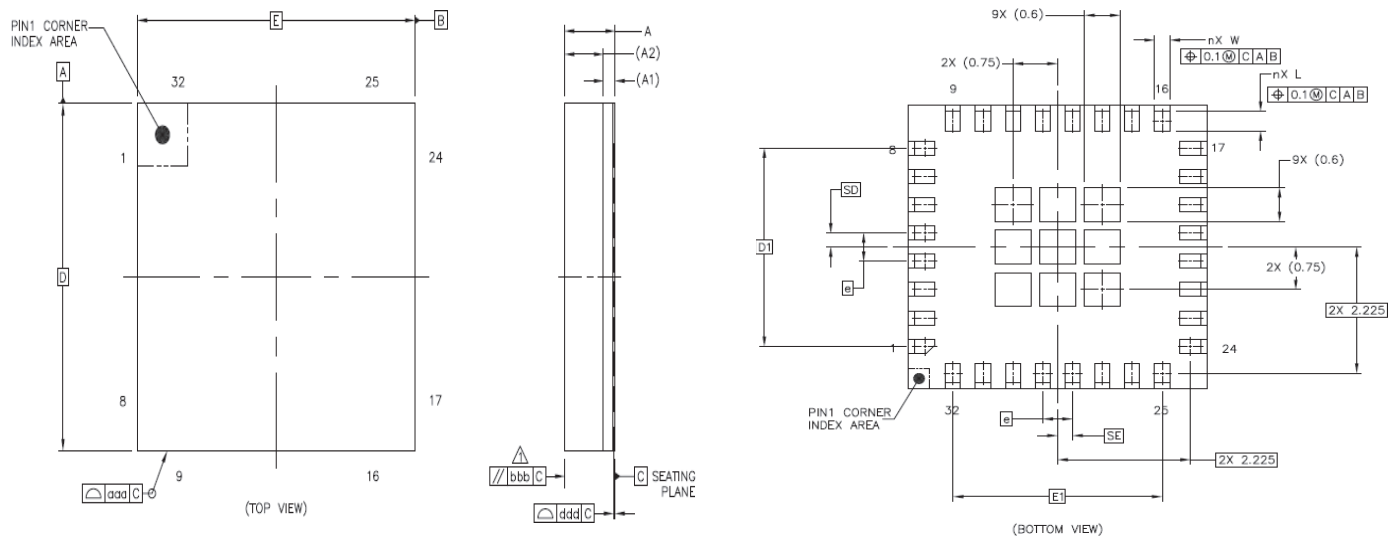
Note: Dimensions do not include protrusions. They must not exceed 0.155 mm (0.006 in.) on any side. Lead dimension must not include solder coverage. Dimensions are in millimeters and inches for reference.

3.2 PD69220 Package Outline Drawing

The following figure shows the package outline drawing of the PD69220 device.

Note: For the most current package drawings, see the Microchip Packaging Specification located at www.microchip.com/packaging

Figure 3-2. PD69220 Package Outline Drawing (32-Pin LGA 5 mm × 5 mm)



The following table lists the dimensions and measurements of the PD69220 package.

Dimension	Millimeters		
	Min.	Typ.	Max.
A	—	—	1
A1	—	0.21	—
A2	—	0.7	—
D	—	5	—
E	—	5	—
W	0.2	0.25	0.3
L	0.30	0.35	0.4
e	—	0.5	—
n	—	32	—
D1	—	3.5	—

.....continued			
Dimension	Millimeters		
	Min.	Typ.	Max.
E1	—	3.5	—
SD	—	0.25	—
SE	—	0.25	—

3.3 Recommended PCB Layout

The following figures show the recommended PCB layout patterns for the 32-pin QFN 5 mm × 5 mm PD69200 and the change to the stencil required for the 32-pin LGA 5 mm × 5 mm PD69220, to use this footprint. Units are in millimeters.

Figure 3-3. PD69200 Solder Mask

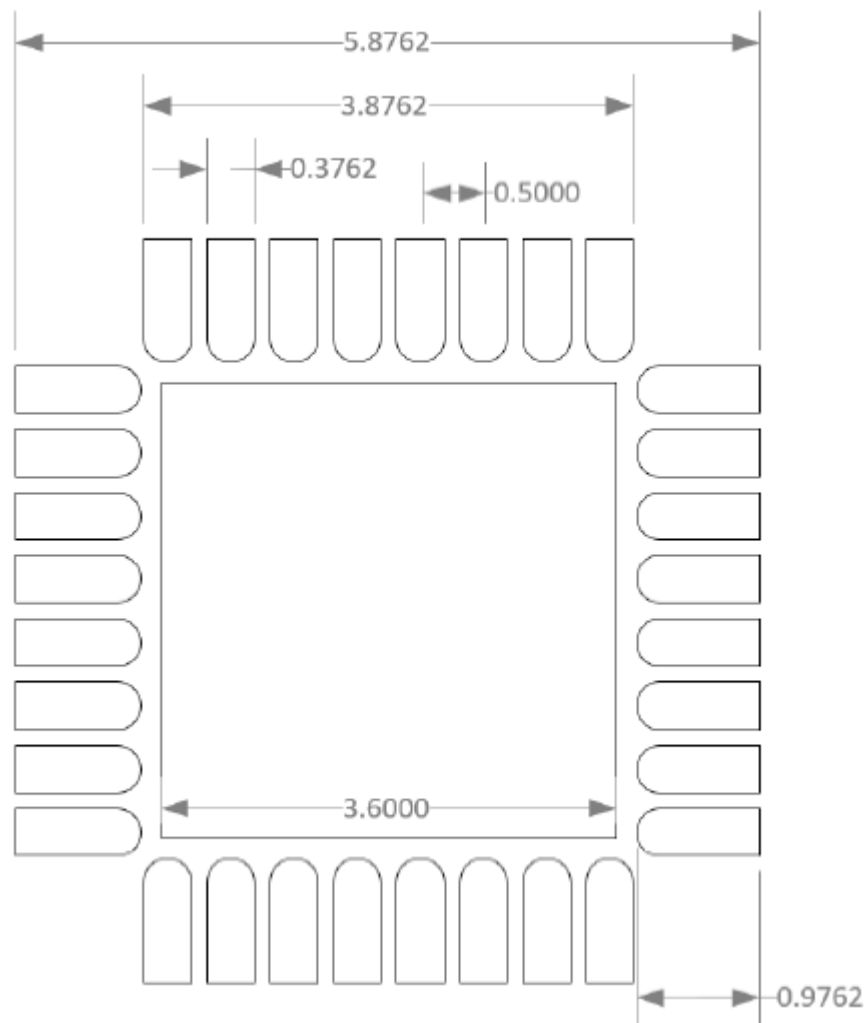


Figure 3-4. PD69200 Top-Layer Copper

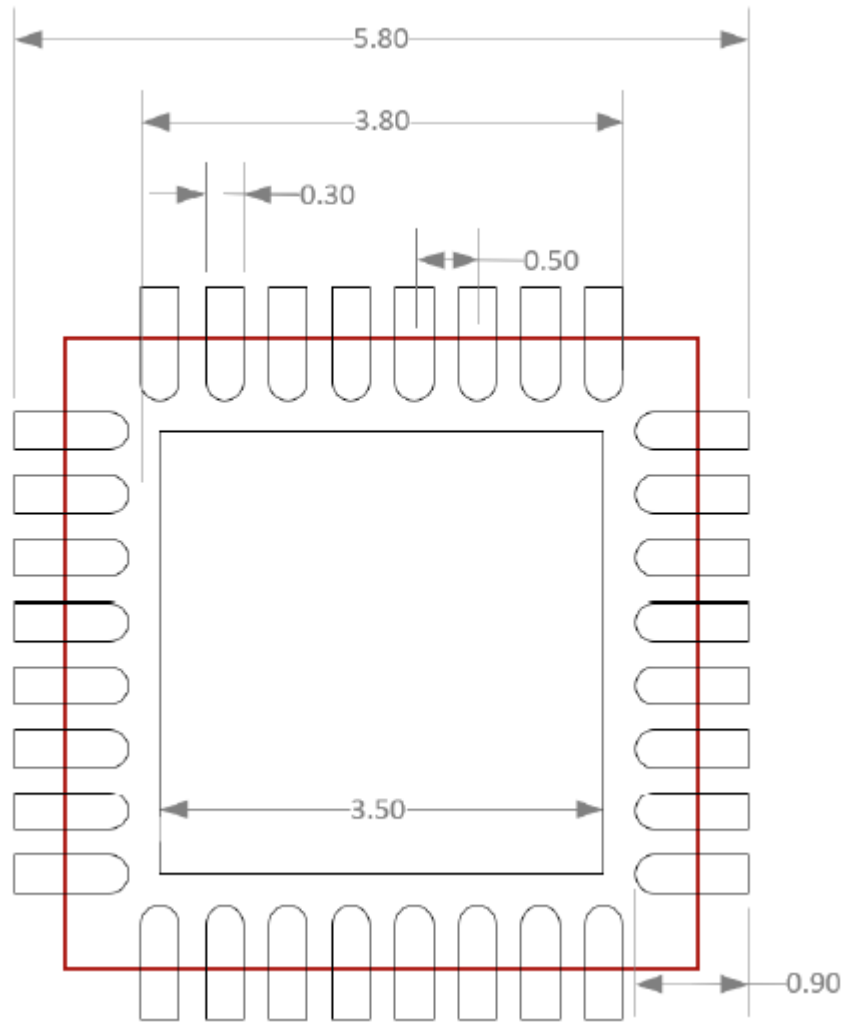


Figure 3-5. PD69200 Paste Mask

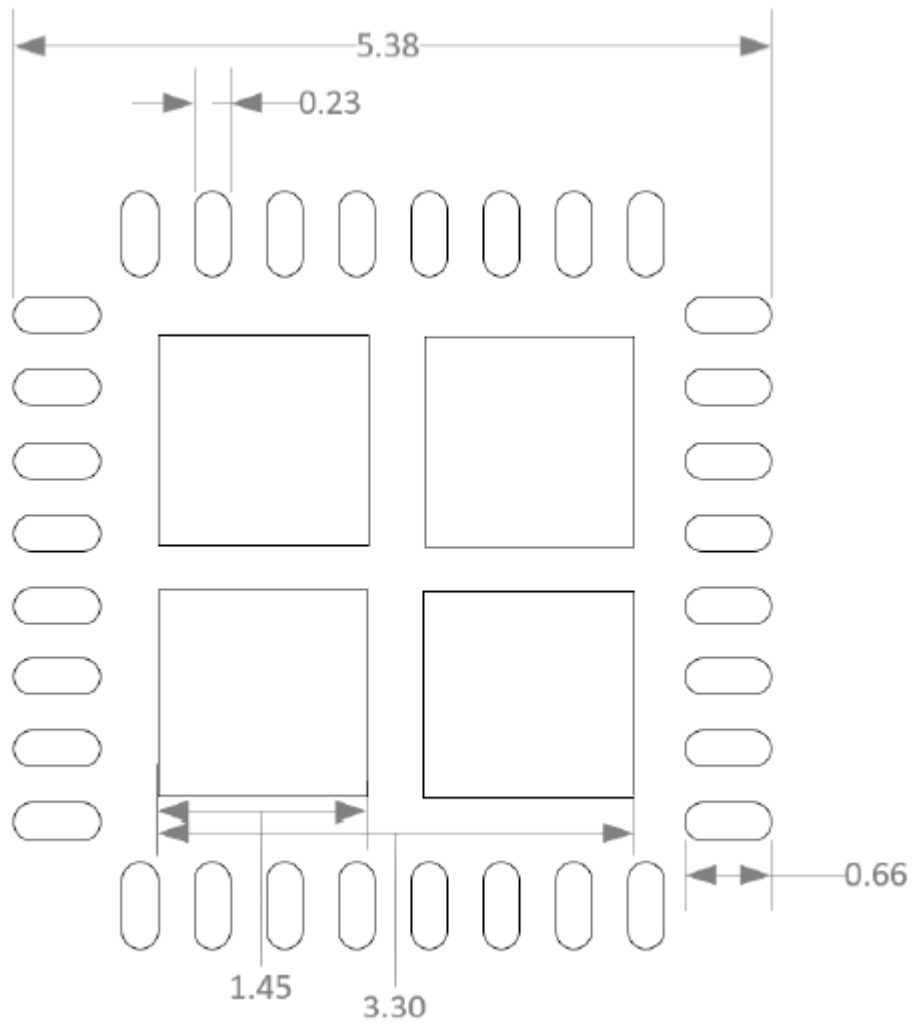
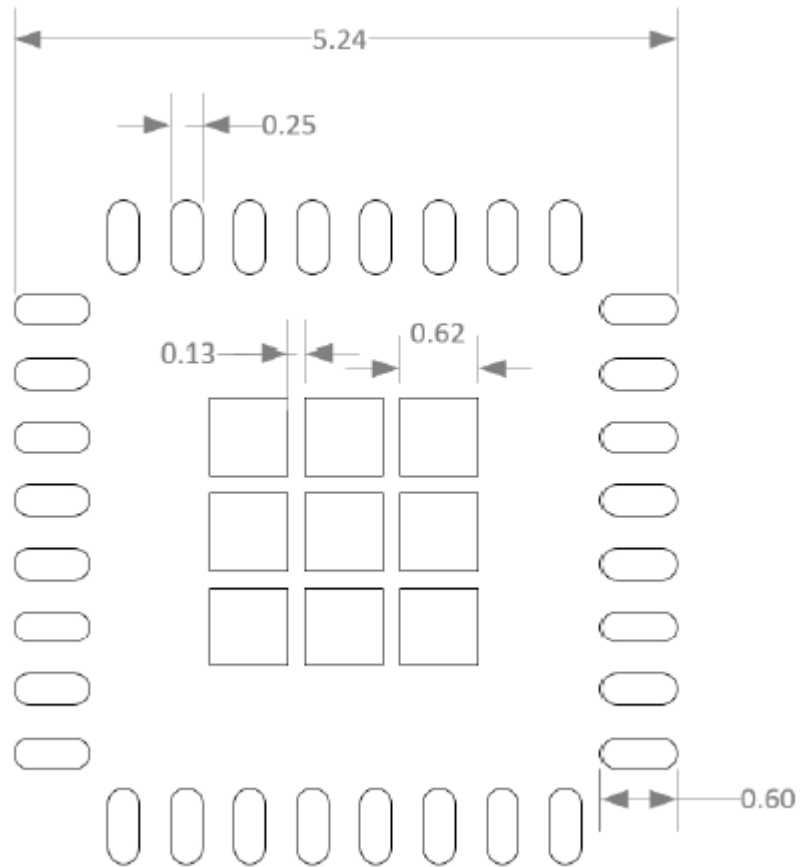


Figure 3-6. PD69220 Paste Mask



Note: The exact paste mask design must be followed. Use a 5 mil stencil.

4. Identification of PoE Controller

This section describes how to determine if PD69200 or PD69220 is installed on a switch. There are two cases to consider:

- Under normal operation where valid firmware is installed
- Under a fault condition where the firmware installed in the controller has become corrupted

4.1 Under Normal Operation

In order to identify which PoE controller is assembled, execute the command “Get Software Version”, as described in section 4.1.19 of the *PD692x0 Communication Protocol User Guide* or section 3.1.17 of the *PD692x0 BT Serial Communication Protocol User Guide*. These documents can be found in the [Microchip Software Library](#).

The response from the PoE controller includes the Prod#, which indicates the PoE controller type.

Table 4-1. Get Software Version

[0]	[1]	[2]	[3]	[4]	[5]	[6]	[7]	[8]	[9]	[10]	[11]	[12]
KEY	ECHO	SUB	SUB1	SUB2	DATA	DATA	DATA	DATA	DATA	DATA	DATA	DATA
0x02	##	0x07	0x1E	0x21	0x4E	0x4E	0x4E	0x4E	0x4E	0x4E	0x4E	0x4E
Request	—	Global	Version	SW Version	N	N	N	N	N	N	N	N
0x03	##	Val	0x4E	Val	Val	Val	Val	Val	Val	Val	Val	Val
Telemetry	—	HW Version	N	Prod#	SW_Version	Param#	Build#	Internal SW#	0x0000			

Table 4-2. Product Number

Product Number (Decimal)	PoE Controller Type
22	PD69200 programmed with IEEE [®] 802.3at firmware
24	PD69200 programmed with IEEE 802.3bt firmware
27	PD69210 programmed with IEEE 802.3at firmware
26	PD69210 programmed with IEEE 802.3bt firmware
28	PD69220 programmed with IEEE 802.3at firmware
29	PD69220 programmed with IEEE 802.3bt firmware

4.2 Under a Fault Condition

Use the following procedure to identify which PoE controller is installed on a PCB in the case of a fault condition when the firmware is corrupted.

When CPU_Status1_Err field reports on firmware error (bit 1 = '1'), the telemetry structure changes to the following.

Table 4-3. Telemetry at Bootup Error

[0] KEY	[1] ECHO	[2] SUB	[3] SUB1	[4] SUB2	[5] DATA	[6] DATA	[7] DATA	[8] DATA	[9] DATA	[10] DATA	[11] DATA	[12] DATA
0x03	0xFF	Val	0x4E	0x4E	Val	Val	Val	Val	0x4E	0x4E	0x4E	0x4E
Telemetry	—	CPU Status1 Err	N	N	Err Code	Err Info1	Err Info2	Download Type	N	N	N	N

The following table lists the fields description in case of an error.

Table 4-4. Error Type

Err Name	Err Code	Err Info1	Err Info2	Download Type
Need Download PD69200	0x4E	0x4E	0x4E	0x4E
Need Download PD69210/220	0x4E	0x4E	0x4E	0x33
HW error Try to program PD69210 or PD69220 with PD69200 firmware	0x02	CPU Type Boot 0x33	CPU Type App 0x2C	0x33
HW error Try to program PD69200 with PD69210 or PD69220 firmware	0x02	CPU Type Boot 0x2C	CPU Type App 0x33	0x4E
Sys Type error from APP Try to program PD69210 with PD69220 firmware	0x03	Boot Sys Type 0x40	App Sys Type 0x41	0x4E
Sys Type error from APP Try to program PD69220 with PD69210 firmware	0x03	Boot Sys Type 0x41	App Sys Type 0x40	0x4E

5. Revision History

Revision	Date	Description
C	07/2022	<p>The following is the summary of changes made in this revision:</p> <ul style="list-style-type: none"> • Added the following sections: <ul style="list-style-type: none"> – 2. PD69200 QFN vs. PD69220 LGA Package – 2.1. Package Construction – 2.1.1. PD69200 QFN – 2.1.2. PD69220 LGA – 2.2. ePad – 2.3. Pins – 2.4. Wettable Flanks • Edited <ul style="list-style-type: none"> – 3. PCB Footprint – 3.2. PD69220 Package Outline Drawing – 3.3. Recommended PCB Layout • Removed tables System Type and MCU type from 4.2. Under a Fault Condition
B	06/2022	<ul style="list-style-type: none"> • Added section Identification of PoE Controller, which describes how to determine which PoE controller (PD69200 or PD69220) is installed on a switch.
A	12/2021	Initial Revision

Microchip Information

The Microchip Website

Microchip provides online support via our website at www.microchip.com/. This website is used to make files and information easily available to customers. Some of the content available includes:

- **Product Support** – Data sheets and errata, application notes and sample programs, design resources, user's guides and hardware support documents, latest software releases and archived software
- **General Technical Support** – Frequently Asked Questions (FAQs), technical support requests, online discussion groups, Microchip design partner program member listing
- **Business of Microchip** – Product selector and ordering guides, latest Microchip press releases, listing of seminars and events, listings of Microchip sales offices, distributors and factory representatives

Product Change Notification Service

Microchip's product change notification service helps keep customers current on Microchip products. Subscribers will receive email notification whenever there are changes, updates, revisions or errata related to a specified product family or development tool of interest.

To register, go to www.microchip.com/pcn and follow the registration instructions.

Customer Support

Users of Microchip products can receive assistance through several channels:

- Distributor or Representative
- Local Sales Office
- Embedded Solutions Engineer (ESE)
- Technical Support

Customers should contact their distributor, representative or ESE for support. Local sales offices are also available to help customers. A listing of sales offices and locations is included in this document.

Technical support is available through the website at: www.microchip.com/support

Microchip Devices Code Protection Feature

Note the following details of the code protection feature on Microchip products:

- Microchip products meet the specifications contained in their particular Microchip Data Sheet.
- Microchip believes that its family of products is secure when used in the intended manner, within operating specifications, and under normal conditions.
- Microchip values and aggressively protects its intellectual property rights. Attempts to breach the code protection features of Microchip product is strictly prohibited and may violate the Digital Millennium Copyright Act.
- Neither Microchip nor any other semiconductor manufacturer can guarantee the security of its code. Code protection does not mean that we are guaranteeing the product is "unbreakable". Code protection is constantly evolving. Microchip is committed to continuously improving the code protection features of our products.

Legal Notice

This publication and the information herein may be used only with Microchip products, including to design, test, and integrate Microchip products with your application. Use of this information in any other manner violates these terms. Information regarding device applications is provided only for your convenience and may be superseded

by updates. It is your responsibility to ensure that your application meets with your specifications. Contact your local Microchip sales office for additional support or, obtain additional support at www.microchip.com/en-us/support/design-help/client-support-services.

THIS INFORMATION IS PROVIDED BY MICROCHIP "AS IS". MICROCHIP MAKES NO REPRESENTATIONS OR WARRANTIES OF ANY KIND WHETHER EXPRESS OR IMPLIED, WRITTEN OR ORAL, STATUTORY OR OTHERWISE, RELATED TO THE INFORMATION INCLUDING BUT NOT LIMITED TO ANY IMPLIED WARRANTIES OF NON-INFRINGEMENT, MERCHANTABILITY, AND FITNESS FOR A PARTICULAR PURPOSE, OR WARRANTIES RELATED TO ITS CONDITION, QUALITY, OR PERFORMANCE.

IN NO EVENT WILL MICROCHIP BE LIABLE FOR ANY INDIRECT, SPECIAL, PUNITIVE, INCIDENTAL, OR CONSEQUENTIAL LOSS, DAMAGE, COST, OR EXPENSE OF ANY KIND WHATSOEVER RELATED TO THE INFORMATION OR ITS USE, HOWEVER CAUSED, EVEN IF MICROCHIP HAS BEEN ADVISED OF THE POSSIBILITY OR THE DAMAGES ARE FORESEEABLE. TO THE FULLEST EXTENT ALLOWED BY LAW, MICROCHIP'S TOTAL LIABILITY ON ALL CLAIMS IN ANY WAY RELATED TO THE INFORMATION OR ITS USE WILL NOT EXCEED THE AMOUNT OF FEES, IF ANY, THAT YOU HAVE PAID DIRECTLY TO MICROCHIP FOR THE INFORMATION.

Use of Microchip devices in life support and/or safety applications is entirely at the buyer's risk, and the buyer agrees to defend, indemnify and hold harmless Microchip from any and all damages, claims, suits, or expenses resulting from such use. No licenses are conveyed, implicitly or otherwise, under any Microchip intellectual property rights unless otherwise stated.

Trademarks

The Microchip name and logo, the Microchip logo, Adaptec, AVR, AVR logo, AVR Freaks, BesTime, BitCloud, CryptoMemory, CryptoRF, dsPIC, flexPWR, HELDO, IGLOO, JukeBlox, KeeLoq, Kleer, LANCheck, LinkMD, maXStylus, maXTouch, MediaLB, megaAVR, Microsemi, Microsemi logo, MOST, MOST logo, MPLAB, OptoLyzer, PIC, picoPower, PICSTART, PIC32 logo, PolarFire, Prochip Designer, QTouch, SAM-BA, SenGenuity, SpyNIC, SST, SST Logo, SuperFlash, Symmetricom, SyncServer, Tachyon, TimeSource, tinyAVR, UNI/O, Vectron, and XMEGA are registered trademarks of Microchip Technology Incorporated in the U.S.A. and other countries.

AgileSwitch, APT, ClockWorks, The Embedded Control Solutions Company, EtherSynch, Flashtec, Hyper Speed Control, HyperLight Load, Libero, motorBench, mTouch, Powermite 3, Precision Edge, ProASIC, ProASIC Plus, ProASIC Plus logo, Quiet- Wire, SmartFusion, SyncWorld, Temux, TimeCesium, TimeHub, TimePictra, TimeProvider, TrueTime, and ZL are registered trademarks of Microchip Technology Incorporated in the U.S.A.

Adjacent Key Suppression, AKS, Analog-for-the-Digital Age, Any Capacitor, AnyIn, AnyOut, Augmented Switching, BlueSky, BodyCom, Clockstudio, CodeGuard, CryptoAuthentication, CryptoAutomotive, CryptoCompanion, CryptoController, dsPICDEM, dsPICDEM.net, Dynamic Average Matching, DAM, ECAN, Espresso T1S, EtherGREEN, GridTime, IdealBridge, In-Circuit Serial Programming, ICSP, INICnet, Intelligent Paralleling, IntellIMOS, Inter-Chip Connectivity, JitterBlocker, Knob-on-Display, KoD, maxCrypto, maxView, memBrain, Mindi, MiWi, MPASM, MPF, MPLAB Certified logo, MPLIB, MPLINK, MultiTRAK, NetDetach, Omniscient Code Generation, PICDEM, PICDEM.net, PICkit, PICtail, PowerSmart, PureSilicon, QMatrix, REAL ICE, Ripple Blocker, RTAX, RTG4, SAM-ICE, Serial Quad I/O, simpleMAP, SimpliPHY, SmartBuffer, SmartHLS, SMART-I.S., storClad, SQL, SuperSwitcher, SuperSwitcher II, Switchtec, SynchroPHY, Total Endurance, Trusted Time, TSHARC, USBCheck, VariSense, VectorBlox, VeriPHY, ViewSpan, WiperLock, XpressConnect, and ZENA are trademarks of Microchip Technology Incorporated in the U.S.A. and other countries.

SQTP is a service mark of Microchip Technology Incorporated in the U.S.A.

The Adaptec logo, Frequency on Demand, Silicon Storage Technology, and Symmcom are registered trademarks of Microchip Technology Inc. in other countries.

GestIC is a registered trademark of Microchip Technology Germany II GmbH & Co. KG, a subsidiary of Microchip Technology Inc., in other countries.

All other trademarks mentioned herein are property of their respective companies.

© 2022, Microchip Technology Incorporated and its subsidiaries. All Rights Reserved.

ISBN: 978-1-6683-0962-9

Quality Management System

For information regarding Microchip's Quality Management Systems, please visit www.microchip.com/quality.

Worldwide Sales and Service

AMERICAS	ASIA/PACIFIC	ASIA/PACIFIC	EUROPE
<p>Corporate Office 2355 West Chandler Blvd. Chandler, AZ 85224-6199 Tel: 480-792-7200 Tel: 480-792-7277 Technical Support: www.microchip.com/support Web Address: www.microchip.com</p> <p>Atlanta Duluth, GA Tel: 678-957-9614 Fax: 678-957-1455</p> <p>Austin, TX Tel: 512-257-3370</p> <p>Boston Westborough, MA Tel: 774-760-0087 Fax: 774-760-0088</p> <p>Chicago Itasca, IL Tel: 630-285-0071 Fax: 630-285-0075</p> <p>Dallas Addison, TX Tel: 972-818-7423 Fax: 972-818-2924</p> <p>Detroit Novi, MI Tel: 248-848-4000</p> <p>Houston, TX Tel: 281-894-5983</p> <p>Indianapolis Noblesville, IN Tel: 317-773-8323 Fax: 317-773-5453 Tel: 317-536-2380</p> <p>Los Angeles Mission Viejo, CA Tel: 949-462-9523 Fax: 949-462-9608 Tel: 951-273-7800</p> <p>Raleigh, NC Tel: 919-844-7510</p> <p>New York, NY Tel: 631-435-6000</p> <p>San Jose, CA Tel: 408-735-9110 Tel: 408-436-4270</p> <p>Canada - Toronto Tel: 905-695-1980 Fax: 905-695-2078</p>	<p>Australia - Sydney Tel: 61-2-9868-6733</p> <p>China - Beijing Tel: 86-10-8569-7000</p> <p>China - Chengdu Tel: 86-28-8665-5511</p> <p>China - Chongqing Tel: 86-23-8980-9588</p> <p>China - Dongguan Tel: 86-769-8702-9880</p> <p>China - Guangzhou Tel: 86-20-8755-8029</p> <p>China - Hangzhou Tel: 86-571-8792-8115</p> <p>China - Hong Kong SAR Tel: 852-2943-5100</p> <p>China - Nanjing Tel: 86-25-8473-2460</p> <p>China - Qingdao Tel: 86-532-8502-7355</p> <p>China - Shanghai Tel: 86-21-3326-8000</p> <p>China - Shenyang Tel: 86-24-2334-2829</p> <p>China - Shenzhen Tel: 86-755-8864-2200</p> <p>China - Suzhou Tel: 86-186-6233-1526</p> <p>China - Wuhan Tel: 86-27-5980-5300</p> <p>China - Xian Tel: 86-29-8833-7252</p> <p>China - Xiamen Tel: 86-592-2388138</p> <p>China - Zhuhai Tel: 86-756-3210040</p>	<p>India - Bangalore Tel: 91-80-3090-4444</p> <p>India - New Delhi Tel: 91-11-4160-8631</p> <p>India - Pune Tel: 91-20-4121-0141</p> <p>Japan - Osaka Tel: 81-6-6152-7160</p> <p>Japan - Tokyo Tel: 81-3-6880-3770</p> <p>Korea - Daegu Tel: 82-53-744-4301</p> <p>Korea - Seoul Tel: 82-2-554-7200</p> <p>Malaysia - Kuala Lumpur Tel: 60-3-7651-7906</p> <p>Malaysia - Penang Tel: 60-4-227-8870</p> <p>Philippines - Manila Tel: 63-2-634-9065</p> <p>Singapore Tel: 65-6334-8870</p> <p>Taiwan - Hsin Chu Tel: 886-3-577-8366</p> <p>Taiwan - Kaohsiung Tel: 886-7-213-7830</p> <p>Taiwan - Taipei Tel: 886-2-2508-8600</p> <p>Thailand - Bangkok Tel: 66-2-694-1351</p> <p>Vietnam - Ho Chi Minh Tel: 84-28-5448-2100</p>	<p>Austria - Wels Tel: 43-7242-2244-39 Fax: 43-7242-2244-393</p> <p>Denmark - Copenhagen Tel: 45-4485-5910 Fax: 45-4485-2829</p> <p>Finland - Espoo Tel: 358-9-4520-820</p> <p>France - Paris Tel: 33-1-69-53-63-20 Fax: 33-1-69-30-90-79</p> <p>Germany - Garching Tel: 49-8931-9700</p> <p>Germany - Haan Tel: 49-2129-3766400</p> <p>Germany - Heilbronn Tel: 49-7131-72400</p> <p>Germany - Karlsruhe Tel: 49-721-625370</p> <p>Germany - Munich Tel: 49-89-627-144-0 Fax: 49-89-627-144-44</p> <p>Germany - Rosenheim Tel: 49-8031-354-560</p> <p>Israel - Ra'anana Tel: 972-9-744-7705</p> <p>Italy - Milan Tel: 39-0331-742611 Fax: 39-0331-466781</p> <p>Italy - Padova Tel: 39-049-7625286</p> <p>Netherlands - Drunen Tel: 31-416-690399 Fax: 31-416-690340</p> <p>Norway - Trondheim Tel: 47-72884388</p> <p>Poland - Warsaw Tel: 48-22-3325737</p> <p>Romania - Bucharest Tel: 40-21-407-87-50</p> <p>Spain - Madrid Tel: 34-91-708-08-90 Fax: 34-91-708-08-91</p> <p>Sweden - Gothenberg Tel: 46-31-704-60-40</p> <p>Sweden - Stockholm Tel: 46-8-5090-4654</p> <p>UK - Wokingham Tel: 44-118-921-5800 Fax: 44-118-921-5820</p>