

---

## Hardware Design Checklist

---

### 1.0 INTRODUCTION

This document provides a hardware design checklist for the Microchip KSZ8081MNX. These checklist items should be followed when utilizing the KSZ8081MNX in a new design. A summary of these items is provided in [Section 9.0, "Hardware Checklist Summary," on page 10](#). Detailed information on these subjects can be found in the corresponding section:

- [General Considerations on page 1](#)
- [Power on page 1](#)
- [Ethernet Signals on page 2](#)
- [Clock Circuit on page 5](#)
- [Digital Interfaces on page 6](#)
- [Startup on page 7](#)
- [Miscellaneous on page 9](#)

### 2.0 GENERAL CONSIDERATIONS

#### 2.1 Pin Check

Check the pinout of the part against the data sheet. Ensure all pins match the data sheet and are configured as inputs, outputs, or bidirectional for error checking.

#### 2.2 Ground

- The ground pins, **GND**, should be connected to the solid ground plane on the board.
- It is recommended that all ground connections be tied together to the same ground plane. Separate ground planes are not recommended.

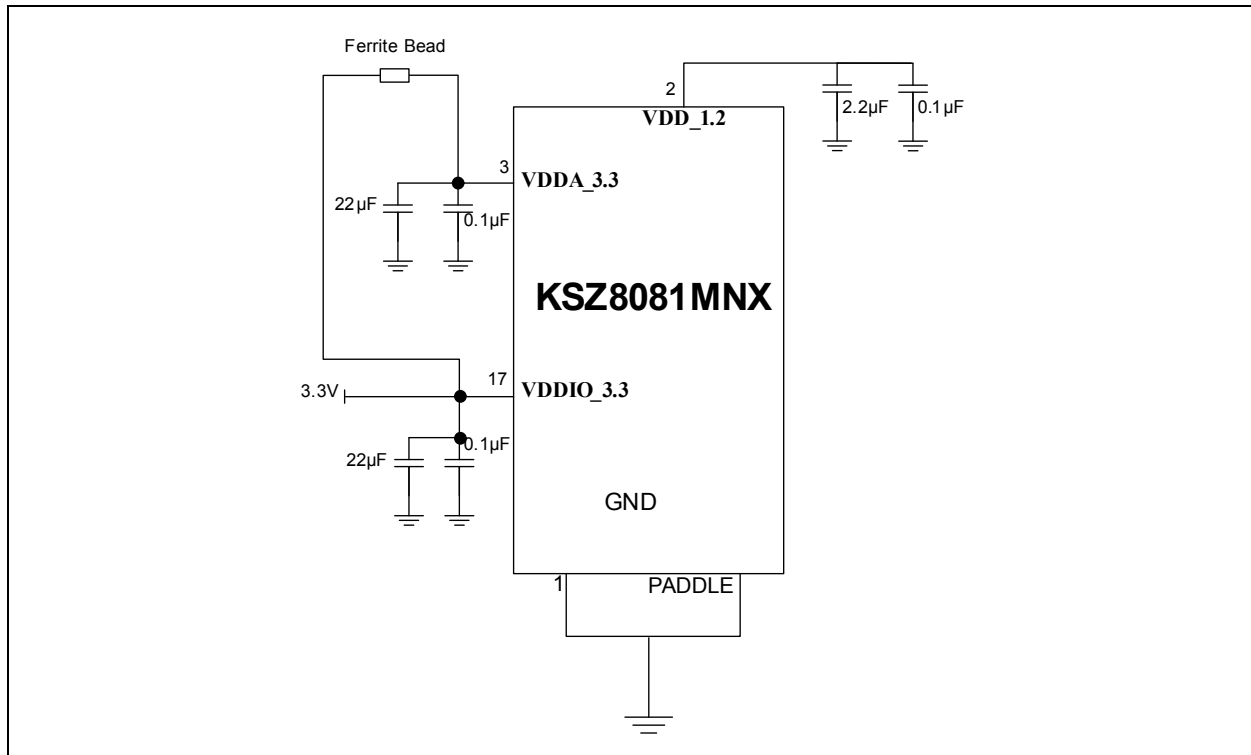
### 3.0 POWER

- The analog supply (**VDDA\_3.3**) is located on pin 3, and requires a connection to **VDDA** (created from +3.3V through a ferrite bead). Bulk capacitance should be placed on each side of the ferrite bead. Generally, a 100-220Ω (at 100-MHz) ferrite bead is used.
- The **VDDA\_3.3** pin should include 0.1-μF and 22-μF capacitors to decouple the device. The capacitor size should be SMD\_0603 or smaller.
- Pin 17 (**VDDIO**) is a variable supply voltage for the I/O pads. It should be connected to the +3.3V, 2.5V, or 1.8V supply. A bulk capacitor is needed close to the source to prevent any droop in the supply when the part starts. Decoupling capacitors need to be placed as close to the part as possible to reduce high frequency noise being injected through EMI interference.
- Pin 2 is the internally generated 1.2V core power rail. Connect 2.2-μF and 0.1-μF capacitors from Pin 2 to ground using wide traces as appropriate for power distribution. Do not connect an external 1.2V source.

The power and ground connections are shown in [Figure 3-1](#).

# KSZ8081MNX

FIGURE 3-1: POWER AND GROUND CONNECTIONS



**Caution:** This +1.2V supply is for internal logic only. **Do not** power other circuits or devices with this supply.

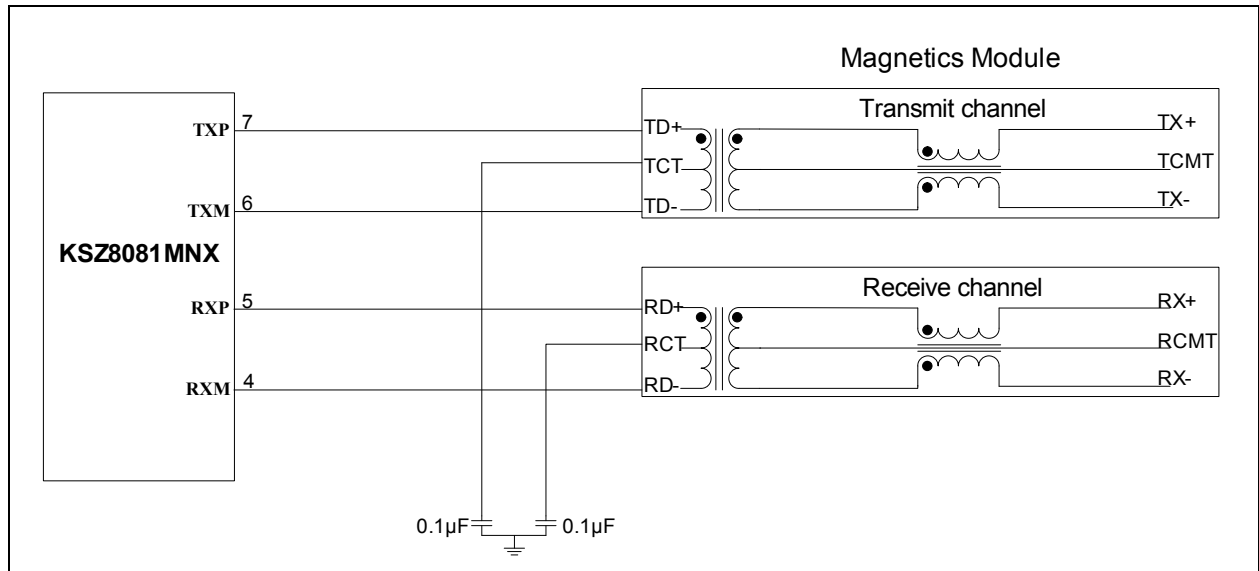
## 4.0 ETHERNET SIGNALS

### 4.1 PHY Interface

- **TXP** (pin 7): This pin is the transmit twisted pair output positive connection from the internal PHY. It has an internal terminator and a bias, so it can be directly connected to the transmit channel of the magnetics and no external terminator and bias are needed.
- **TXM** (pin 6): This pin is the transmit twisted pair output negative connection from the internal PHY. It has an internal terminator and a bias, so it can be directly connected to the transmit channel of the magnetics and no external terminator and bias are needed.
- **RXP** (pin 5): This pin is the receive twisted pair input positive connection to the internal PHY. It has an internal terminator and a bias, so it can be directly connected to the receive channel of the magnetics and no external terminator and bias are needed.
- **RXM** (pin 4): This pin is the receive twisted pair input negative connection to the internal PHY. It has an internal terminator and a bias, so it can be directly connected to the receive channel of the magnetics and no external terminator and bias are needed.

For transmit and receive channel connections details, refer to [Figure 4-1](#).

**FIGURE 4-1: TRANSMIT AND RECEIVE CHANNEL CONNECTIONS**



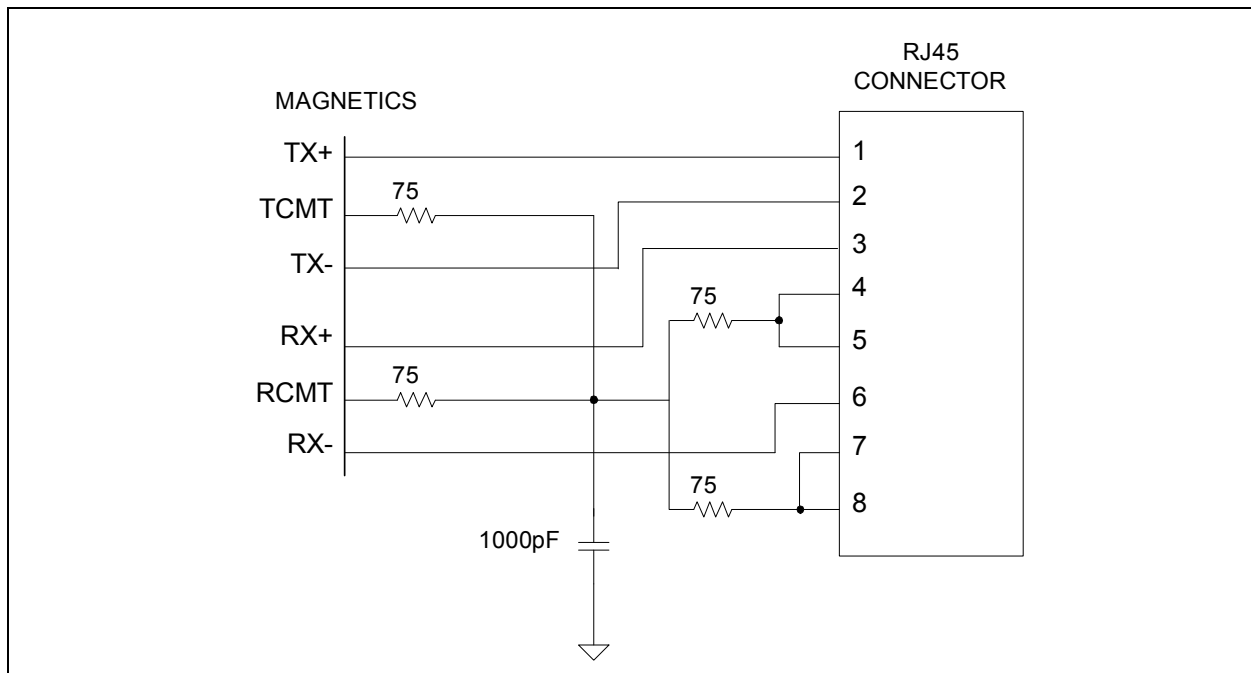
## 4.2 Magnetics Connection

- The center tap connection on the KSZ8081MNX side for the transmit channel only connects a 0.1-µF capacitor to GND and no bias is needed.
- The center tap connection on the KSZ8081MNX side for the receive channel only connects a 0.1-µF capacitor to GND and no bias is needed.
- The center taps of the magnetics of the transmit and receive channels should not be connected together.
- The center tap connection on the cable side (RJ45 side) for the transmit channel should be terminated with a 75-Ω resistor through a 1000-pF, 2-KV capacitor to chassis ground.
- The center tap connection on the cable side (RJ45 side) for the receive channel should be terminated with a 75-Ω resistor through a 1000-pF, 2-KV capacitor to chassis ground.
- Only one 1000-pF, 2-KV capacitor to chassis ground is required. It is shared by both TX and RX center taps.
- MDI Connections:
  - Pin 1 of the RJ45 is TX+ and should trace through the magnetics to TXP (pin 7) of the KSZ8081MNX.
  - Pin 2 of the RJ45 is TX- and should trace through the magnetics to TXM (pin 6) of the KSZ8081MNX.
  - Pin 3 of the RJ45 is RX+ and should trace through the magnetics to RXP (pin 5) of the KSZ8081MNX.
  - Pin 6 of the RJ45 is RX- and should trace through the magnetics to RXM (pin 4) of the KSZ8081MNX.
- MDIX Connections:
  - Pin 3 of the RJ45 is TX+ and should trace through the magnetics to TXP (pin 7) of the KSZ8081MNX.
  - Pin 6 of the RJ45 is TX- and should trace through the magnetics to TXM (pin 6) of the KSZ8081MNX.
  - Pin 1 of the RJ45 is RX+ and should trace through the magnetics to RXP (pin 5) of the KSZ8081MNX.
  - Pin 2 of the RJ45 is RX- and should trace through the magnetics to RXM (pin 4) of the KSZ8081MNX.
- When using the KSZ8081MNX device in the Auto MDIX mode of operation, the use of an Auto MDIX style magnetics module (that is, the one where the TX and RX channels are identical) is required.

## 4.3 RJ45 Connector

- Pins 4 and 5 of the RJ45 connector interface to one pair of unused wires in CAT-5 type cables. These should be terminated to chassis ground through a 1000-pF, 2-KV capacitor. There are two methods of accomplishing this:
  - Pins 4 and 5 can be connected together with two 49.9- $\Omega$  resistors. The common connection of these resistors should be connected through a third 49.9- $\Omega$  resistor to the 1000-pF, 2-KV capacitor.
  - For a lower component count, the resistors can be combined. The two 49.9- $\Omega$  resistors in parallel perform like a 25- $\Omega$  resistor. The 25- $\Omega$  resistor in series with the 49.9- $\Omega$  resistor causes the entire circuit to function as a 75- $\Omega$  resistor. So, by shorting pins 4 and 5 together on the RJ45 and terminating them with a 75- $\Omega$  resistor in series with the 1000-pF, 2-KV capacitor to chassis ground, an equivalent circuit is created.
- Pins 7 and 8 of the RJ45 connector interface to one pair of unused wires in CAT-5 type cables. These should be terminated to chassis ground through a 1000-pF, 2-KV capacitor. There are two methods of accomplishing this:
  - Pins 7 and 8 can be connected together with two 49.9- $\Omega$  resistors. The common connection of these resistors should be connected through a third 49.9- $\Omega$  resistor to the 1000-pF, 2-KV capacitor.
  - For a lower component count, the resistors can be combined. The two 49.9- $\Omega$  resistors in parallel perform like a 25- $\Omega$  resistor. The 25- $\Omega$  resistor in series with the 49.9- $\Omega$  resistor causes the entire circuit to function as a 75- $\Omega$  resistor. So, by shorting pins 7 and 8 together on the RJ45 and terminating them with a 75- $\Omega$  resistor in series with the 1000-pF, 2-KV capacitor to chassis ground, an equivalent circuit is created.
- The RJ45 shield should be attached directly to chassis ground.

**FIGURE 4-2: RJ45 CONNECTIONS**



## 5.0 CLOCK CIRCUIT

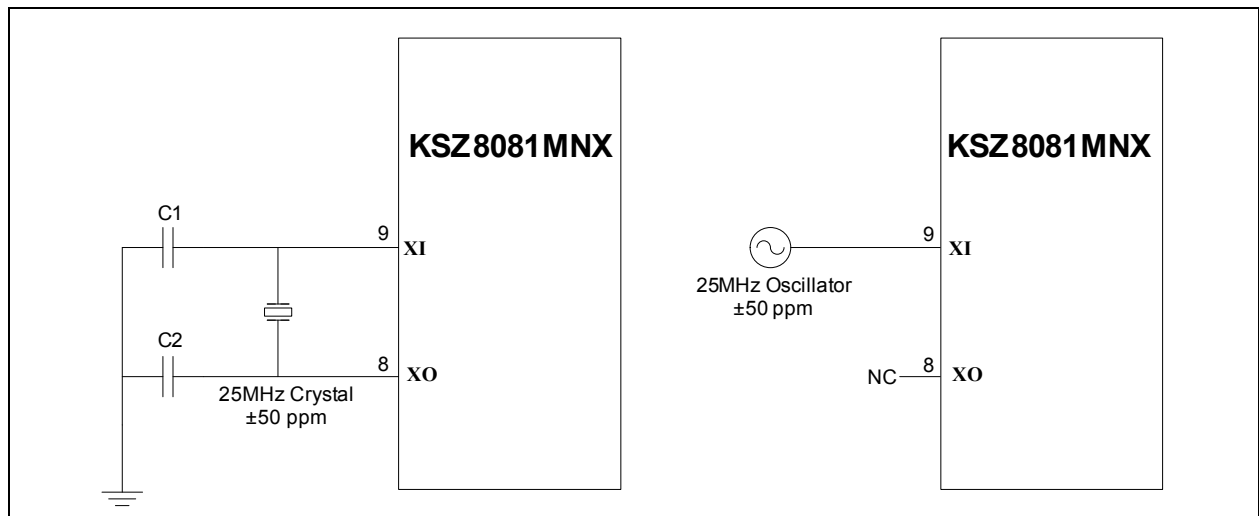
### 5.1 Crystal and External Clock Connection

A 25.000-MHz ( $\pm 50$ ppm) crystal should be used to provide the clock source. For exact specifications and tolerances, refer to the latest revision of the KSZ8081MNX data sheet.

- **XI** (pin 9) is the clock circuit input for the KSZ8081MNX. This pin requires a capacitor to ground. One side of the crystal connects to this pin.
- **XO** (pin 8) is the clock circuit output for the KSZ8081MNX. This pin requires a capacitor to ground. One side of the crystal connects to this pin.
- Since every system design is unique, the capacitor values are system dependent, based on the CL spec of the crystal and the stray capacitance value. The PCB design, crystal, and layout all contribute to the characteristics of this circuit.

Alternately, a 25.000-MHz, 3.3-V clock oscillator may be used to provide the clock source for the KSZ8081MNX. When using a single ended clock source, **XO** (pin 8) should be left floating as a No Connect (NC).

**FIGURE 5-1: CRYSTAL AND OSCILLATOR CONNECTIONS**



# KSZ8081MNX

## 6.0 DIGITAL INTERFACES

### 6.1 MII Interface

- When utilizing either an external MII MAC interface or an MII connector, the following table indicates the proper connections for the 17 signals, including two management pins (MDC and MDIO).

**TABLE 6-1: MII CONNECTIONS**

From:	Connects to:	
KSZ8081MNX	MII MAC Device	MII Connector
RXD0 (pin 16)	RXD<0>	RXD<0> (contact 7)
RXD1 (pin 15)	RXD<1>	RXD<1> (contact 6)
RXD2 (pin 14)	RXD<2>	RXD<2> (contact 5)
RXD3 (pin 13)	RXD<3>	RXD<3> (contact 4)
RXDV (pin 18)	RX_DV	RX_DV (contact 8)
RXER (pin 20)	RX_ER	RX_ER (contact 10)
RXC (pin 19)	RX_CLK	RX_CLK (contact 9)
TXD0 (pin 24)	TXD<0>	TXD<0> (contact 14)
TXD1 (pin 25)	TXD<1>	TXD<1> (contact 15)
TXD2 (pin 26)	TXD<2>	TXD<2> (contact 16)
TXD3 (pin 27)	TXD<3>	TXD<3> (contact 17)
TXEN (pin 23)	TX_EN	TX_EN (contact 13)
TXC (pin 22)	TX_CLK	TX_CLK (contact 12)
CRS (pin 29)	CRS	CRS (contact 19)
COL (pin 28)	COL	COL (contact 18)
MDIO (pin 11)	MDIO	MDIO (contact 2)
MDC (pin 12)	MDC	MDC (contact 3)

- The KSZ8081MNX does not provide a TX\_ER pin (Transmit error functionality on MII bus). Therefore, the TX\_ER contact on the MII connector should be a no connect (NC). Please visit the MAC interface's data sheet for details on the TX\_ER connection.
- Provisions should be made for series terminations for all outputs on the MII interface. Series resistors enable the designer to closely match the output driver impedance of the KSZ8081MNX and the PCB trace impedance to minimize ringing on the signals. Exact resistor values are application-dependent and must be analyzed in-system. A suggested starting point for the value of these series resistors is 33Ω, as detailed in [Table 6-2](#).

**TABLE 6-2: MII SERIES SOURCE TERMINATIONS**

Signal	MII Mode
RXD0	33Ω
RXD1	33Ω
RXD2	33Ω
RXD3	33Ω
RXC	33Ω
RXER	33Ω
RXDV	33Ω
COL	33Ω
CRS	33Ω
TXC	33Ω

## 6.2 Required External Pull-ups

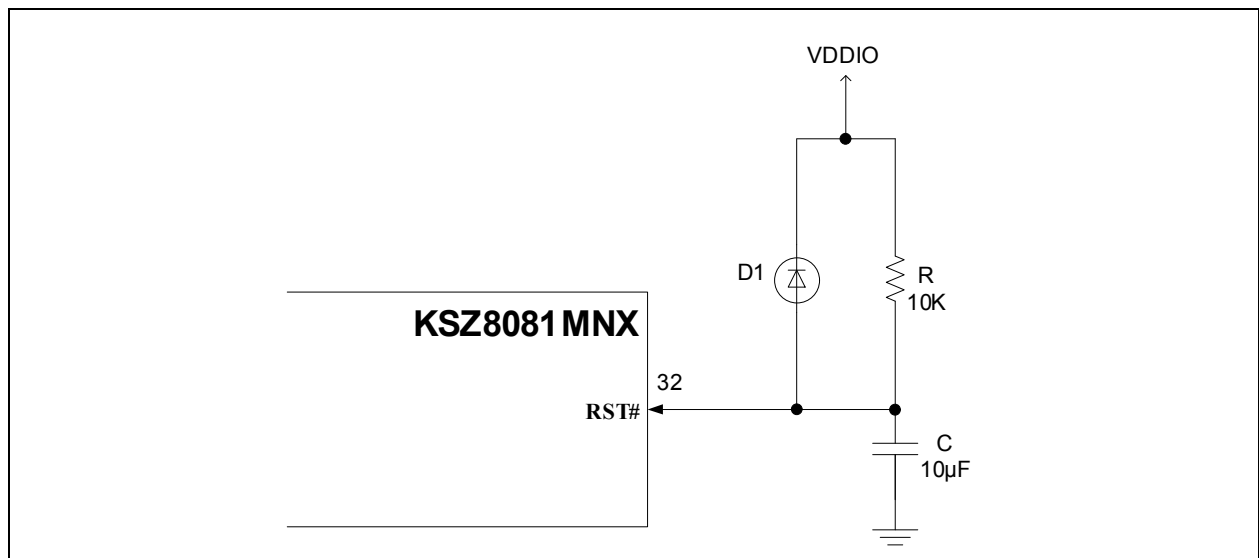
- When using the KSZ8081MNX MDC/MDIO management pins, a pull-up resistor from 1-K $\Omega$  to 10-K $\Omega$  on the MDIO signal (pin 11) is required, based on an MDC frequency from 10-MHz to  $\leq 1$ -MHz.
- If used, the INTRP (pin 21) requires a 4.7-K $\Omega$  external pull-up resistor since this output is an open drain. If the INTRP pin is not used then this pin can float.

## 7.0 STARTUP

### 7.1 Reset Circuit

RST# (pin 32) is an active-low reset input. This signal resets all logic and registers within the KSZ8081MNX. A hardware reset (RST# assertion) is required following power-up. Please refer to the latest copy of the KSZ8081MNX data sheet for reset timing requirements. Figure 7-1 shows a recommended reset circuit for powering up the KSZ8081MNX when reset is triggered by the power supply.

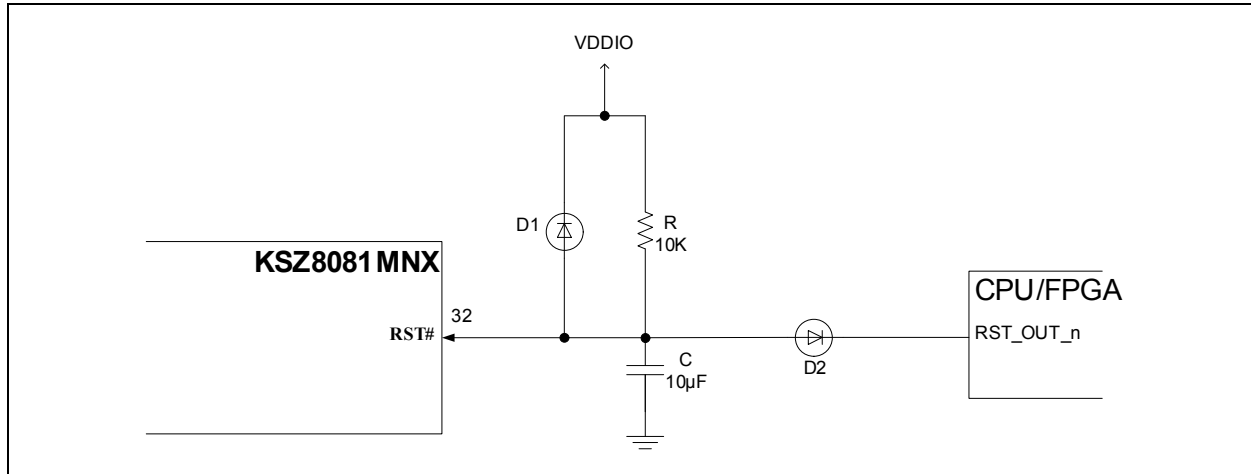
FIGURE 7-1: RESET TRIGGERED BY POWER SUPPLY



# KSZ8081MNX

Figure 7-2 details the recommended reset circuit for applications where reset is driven by an external CPU or FPGA. The reset out pin (RST\_OUT\_n) from the CPU/FPGA provides the warm reset after power-up. If the Ethernet device and CPU/FPGA use the same VDDIO voltage, D2 can be removed and both reset pins can be directly connected.

**FIGURE 7-2: RESET CIRCUIT INTERFACE WITH CPU/FPGA RESET OUTPUT**



## 7.2 Configuration Mode Pins (Strapping Options)

The configuration mode pins of the KSZ8081MNX (CONFIG[2:0]) control the default configuration of the 10/100 PHY. Speed, duplex, auto-negotiation, and power-down functionality can be configured through these pins. The value of these three pins are latched upon power-up and reset. In some systems, the MAC receive input pins may drive high during power-up or reset and consequently cause the PHY strap-in pins on the RMII signals to be latched high. In this case, it is recommended to add 1K pull-downs on these PHY strap-in pins to ensure the PHY does not strap in to ISOLATE mode or is not configured with an incorrect PHY address. Refer to the KSZ8081MNX data sheet for complete details for the operation of these pins.

## 7.3 LED Pins

- The KSZ8081MNX provides two LED signals. These indicators display speed, link, and activity information about the current state of the PHY. The LED pins drive low to light up the LED indicators, which should have their anode ends tied to 3.3V and their cathode ends tied through a series resistor (typically 220Ω–470Ω). Refer to the KSZ8081MNX data sheet for further details on how to connect each pin for correct operation.
- The LED functionality signal pins are shared with the following pin strapping functions:
  - LED0 is shared with **NWAYEN** on pin 30 for KSZ8081MNX.
  - LED1 is shared with **SPEED** on pin 31 for KSZ8081MNX.

**Note 1:** For 1.8V VDDIO, LED indication support is not recommended due to the low voltage. Without the LED indicator, the **SPEED** and **NWAYEN** strapping pins are functional with a 4.7KΩ pull-up to 1.8V VDDIO (or be floated) for a value of '1', and with a 1.0KΩ pull-down to ground for a value of '0'.

**2:** If using RJ45 jacks with integrated LEDs and 1.8V VDDIO, a level shifting is required from LED 3.3V to 1.8V. In this case, a bipolar transistor or a level shifting device can be used.

## 8.0 MISCELLANEOUS

### 8.1 REXT Resistor

The **REXT** pin on the KSZ8081MNX must connect to ground through a 6.49-K $\Omega$  resistor with a tolerance of 1.0%. This is used to set up critical bias currents for the embedded 10/100 Ethernet physical device.

### 8.2 Other Considerations

- Incorporate a large SMD footprint (SMD\_1210) to connect the chassis ground to the digital ground. This allows some flexibility at EMI testing for different grounding options. Leaving the footprint open allows the two grounds to remain separate. Shorting them together with a zero ohm resistor connects them. For best performance, short them together with a cap or a ferrite bead.
- Be sure to incorporate enough bulk capacitors (4.7-22  $\mu$ F) for each power plane.

## 9.0 HARDWARE CHECKLIST SUMMARY

**TABLE 9-1: HARDWARE DESIGN CHECKLIST**

Section	Check	Explanation	V	Notes
Section 2.0, "General Considerations"	Section 2.1, "Pin Check"	Verify that the pins match the data sheet.		
	Section 2.2, "Ground"	Verify that the grounds are tied together.		
Section 3.0, "Power"	Section 3.0, "Power"	<ul style="list-style-type: none"> <li>Ensure <b>VDDA_3.3</b> and <b>VDDIO</b> are in the range 3.135V to 3.465V and a 22-μF capacitor is on each pin.</li> <li><b>VDD 1.2</b> requires two 0.1-μF capacitors.</li> </ul>		
Section 4.0, "Ethernet Signals"	Section 4.1, "PHY Interface"	Verify that the TX and RX pin do not contain any termination resistors.		
	Section 4.2, "Magnetics Connection"	Verify that the center taps are connected to the GND using separate 0.1-μF capacitors on the KSZ8081MLX device side, and are terminated with 75-Ω resistors through a 1000-pF, 2-kV capacitor to chassis ground on the RJ45 line side.		
	Section 4.3, "RJ45 Connector"	Verify pins 4/5 and 7/8 of the RJ45 connect to CAT-5 cable and are terminated to chassis ground through a 1000-pF, 2-kV capacitor.		
Section 5.0, "Clock Circuit"	Section 5.1, "Crystal and External Clock Connection"	Verify usage of 25-MHz ±50ppm crystal.		
Section 6.0, "Digital Interfaces"	Section 6.1, "MII Interface", Section , ""	Confirm proper MII signals between MAC and PHY interface with correct termination resistors (33Ω) and external pull-up for MDIO signal.		
Section 7.0, "Startup"	Section 7.1, "Reset Circuit"	Confirm proper reset circuit design: standalone reset or external CPU/FPGA reset.		
	Section 7.2, "Configuration Mode Pins (Strapping Options)"	In systems where the MAC receive input pins are driven high after reset, it is recommended to add 1-KΩ pull-downs on the PHY strap pins.		
	Section 7.3, "LED Pins"	If used, confirm proper connections, taking into consideration shared functionality on select LED pins.		
Section 8.0, "Miscellaneous"	Section 8.1, "REXT Resistor"	Confirm proper REXT resistor (6.49 KΩ, 1.0%).		
	Section 8.2, "Other Considerations"	<ul style="list-style-type: none"> <li>Incorporate a large SMD footprint (SMD_1210) to connect the chassis ground to the chip ground instead of the digital ground.</li> <li>Incorporate sufficient power plane bulk capacitors (4.7-22 μF).</li> </ul>		

## APPENDIX A: REVISION HISTORY

TABLE A-1: REVISION HISTORY

Revision Level & Date	Section/Figure/Entry	Correction
DS00002763A (08-07-18)	Initial release	

## THE MICROCHIP WEB SITE

Microchip provides online support via our WWW site at [www.microchip.com](http://www.microchip.com). This web site is used as a means to make files and information easily available to customers. Accessible by using your favorite Internet browser, the web site contains the following information:

- **Product Support** – Data sheets and errata, application notes and sample programs, design resources, user's guides and hardware support documents, latest software releases and archived software
- **General Technical Support** – Frequently Asked Questions (FAQ), technical support requests, online discussion groups, Microchip consultant program member listing
- **Business of Microchip** – Product selector and ordering guides, latest Microchip press releases, listing of seminars and events, listings of Microchip sales offices, distributors and factory representatives

## CUSTOMER CHANGE NOTIFICATION SERVICE

Microchip's customer notification service helps keep customers current on Microchip products. Subscribers will receive e-mail notification whenever there are changes, updates, revisions or errata related to a specified product family or development tool of interest.

To register, access the Microchip web site at [www.microchip.com](http://www.microchip.com). Under "Support", click on "Customer Change Notification" and follow the registration instructions.

## CUSTOMER SUPPORT

Users of Microchip products can receive assistance through several channels:

- Distributor or Representative
- Local Sales Office
- Field Application Engineer (FAE)
- Technical Support

Customers should contact their distributor, representative or Field Application Engineer (FAE) for support. Local sales offices are also available to help customers. A listing of sales offices and locations is included in the back of this document.

**Technical support is available through the web site at: <http://microchip.com/support>**

**Note the following details of the code protection feature on Microchip devices:**

- Microchip products meet the specification contained in their particular Microchip Data Sheet.
- Microchip believes that its family of products is one of the most secure families of its kind on the market today, when used in the intended manner and under normal conditions.
- There are dishonest and possibly illegal methods used to breach the code protection feature. All of these methods, to our knowledge, require using the Microchip products in a manner outside the operating specifications contained in Microchip's Data Sheets. Most likely, the person doing so is engaged in theft of intellectual property.
- Microchip is willing to work with the customer who is concerned about the integrity of their code.
- Neither Microchip nor any other semiconductor manufacturer can guarantee the security of their code. Code protection does not mean that we are guaranteeing the product as "unbreakable."

Code protection is constantly evolving. We at Microchip are committed to continuously improving the code protection features of our products. Attempts to break Microchip's code protection feature may be a violation of the Digital Millennium Copyright Act. If such acts allow unauthorized access to your software or other copyrighted work, you may have a right to sue for relief under that Act.

Information contained in this publication regarding device applications and the like is provided only for your convenience and may be superseded by updates. It is your responsibility to ensure that your application meets with your specifications. MICROCHIP MAKES NO REPRESENTATIONS OR WARRANTIES OF ANY KIND WHETHER EXPRESS OR IMPLIED, WRITTEN OR ORAL, STATUTORY OR OTHERWISE, RELATED TO THE INFORMATION, INCLUDING BUT NOT LIMITED TO ITS CONDITION, QUALITY, PERFORMANCE, MERCHANTABILITY OR FITNESS FOR PURPOSE. Microchip disclaims all liability arising from this information and its use. Use of Microchip devices in life support and/or safety applications is entirely at the buyer's risk, and the buyer agrees to defend, indemnify and hold harmless Microchip from any and all damages, claims, suits, or expenses resulting from such use. No licenses are conveyed, implicitly or otherwise, under any Microchip intellectual property rights unless otherwise stated.

#### Trademarks

The Microchip name and logo, the Microchip logo, AnyRate, AVR, AVR logo, AVR Freaks, BeaconThings, BitCloud, CryptoMemory, CryptoRF, dsPIC, FlashFlex, flexPWR, Helder, JukeBlox, KEELQ, KEELQ logo, Klear, LANCheck, LINK MD, maXStylus, maXTouch, MediaLB, megaAVR, MOST, MOST logo, MPLAB, OptoLyzer, PIC, picoPower, PICSTART, PIC32 logo, Prochip Designer, QTouch, RightTouch, SAM-BA, SpyNIC, SST, SST Logo, SuperFlash, tinyAVR, UNI/O, and XMEGA are registered trademarks of Microchip Technology Incorporated in the U.S.A. and other countries.

ClockWorks, The Embedded Control Solutions Company, EtherSynch, Hyper Speed Control, HyperLight Load, IntelliMOS, mTouch, Precision Edge, and Quiet-Wire are registered trademarks of Microchip Technology Incorporated in the U.S.A.

Adjacent Key Suppression, AKS, Analog-for-the-Digital Age, Any Capacitor, AnyIn, AnyOut, BodyCom, chipKIT, chipKIT logo, CodeGuard, CryptoAuthentication, CryptoCompanion, CryptoController, dsPICDEM, dsPICDEM.net, Dynamic Average Matching, DAM, ECAN, EtherGREEN, In-Circuit Serial Programming, ICSP, Inter-Chip Connectivity, JitterBlocker, KlearNet, KlearNet logo, Mindi, MiWi, motorBench, MPASM, MPF, MPLAB Certified logo, MPLIB, MPLINK, MultiTRAK, NetDetach, Omniscient Code Generation, PICDEM, PICDEM.net, PICkit, PICtail, PureSilicon, QMatrix, RightTouch logo, REAL ICE, Ripple Blocker, SAM-ICE, Serial Quad I/O, SMART-I.S., SQI, SuperSwitcher, SuperSwitcher II, Total Endurance, TSHARC, USBCheck, VariSense, ViewSpan, WiperLock, Wireless DNA, and ZENA are trademarks of Microchip Technology Incorporated in the U.S.A. and other countries.

SQTP is a service mark of Microchip Technology Incorporated in the U.S.A.

Silicon Storage Technology is a registered trademark of Microchip Technology Inc. in other countries.

GestIC is a registered trademark of Microchip Technology Germany II GmbH & Co. KG, a subsidiary of Microchip Technology Inc., in other countries.

All other trademarks mentioned herein are property of their respective companies.

© 2018, Microchip Technology Incorporated, All Rights Reserved.

ISBN: 9781522433866

**QUALITY MANAGEMENT SYSTEM**  
**CERTIFIED BY DNV**  
**= ISO/TS 16949 =**

*Microchip received ISO/TS-16949:2009 certification for its worldwide headquarters, design and wafer fabrication facilities in Chandler and Tempe, Arizona; Gresham, Oregon and design centers in California and India. The Company's quality system processes and procedures are for its PIC® MCUs and dsPIC® DSCs, KEELQ® code hopping devices, Serial EEPROMs, microperipherals, nonvolatile memory and analog products. In addition, Microchip's quality system for the design and manufacture of development systems is ISO 9001:2000 certified.*



## Worldwide Sales and Service

### AMERICAS

**Corporate Office**  
2355 West Chandler Blvd.  
Chandler, AZ 85224-6199  
Tel: 480-792-7200  
Fax: 480-792-7277  
Technical Support:  
<http://www.microchip.com/support>  
Web Address:  
[www.microchip.com](http://www.microchip.com)

**Atlanta**  
Duluth, GA  
Tel: 678-957-9614  
Fax: 678-957-1455

**Austin, TX**  
Tel: 512-257-3370

**Boston**  
Westborough, MA  
Tel: 774-760-0087  
Fax: 774-760-0088

**Chicago**  
Itasca, IL  
Tel: 630-285-0071  
Fax: 630-285-0075

**Dallas**  
Addison, TX  
Tel: 972-818-7423  
Fax: 972-818-2924

**Detroit**  
Novi, MI  
Tel: 248-848-4000

**Houston, TX**  
Tel: 281-894-5983

**Indianapolis**  
Noblesville, IN  
Tel: 317-773-8323  
Fax: 317-773-5453  
Tel: 317-536-2380

**Los Angeles**  
Mission Viejo, CA  
Tel: 949-462-9523  
Fax: 949-462-9608  
Tel: 951-273-7800

**Raleigh, NC**  
Tel: 919-844-7510

**New York, NY**  
Tel: 631-435-6000

**San Jose, CA**  
Tel: 408-735-9110  
Tel: 408-436-4270

**Canada - Toronto**  
Tel: 905-695-1980  
Fax: 905-695-2078

### ASIA/PACIFIC

**Australia - Sydney**  
Tel: 61-2-9868-6733

**China - Beijing**  
Tel: 86-10-8569-7000

**China - Chengdu**  
Tel: 86-28-8665-5511

**China - Chongqing**  
Tel: 86-23-8980-9588

**China - Dongguan**  
Tel: 86-769-8702-9880

**China - Guangzhou**  
Tel: 86-20-8755-8029

**China - Hangzhou**  
Tel: 86-571-8792-8115

**China - Hong Kong SAR**  
Tel: 852-2943-5100

**China - Nanjing**  
Tel: 86-25-8473-2460

**China - Qingdao**  
Tel: 86-532-8502-7355

**China - Shanghai**  
Tel: 86-21-3326-8000

**China - Shenyang**  
Tel: 86-24-2334-2829

**China - Shenzhen**  
Tel: 86-755-8864-2200

**China - Suzhou**  
Tel: 86-186-6233-1526

**China - Wuhan**  
Tel: 86-27-5980-5300

**China - Xian**  
Tel: 86-29-8833-7252

**China - Xiamen**  
Tel: 86-592-2388138

**China - Zhuhai**  
Tel: 86-756-3210040

### ASIA/PACIFIC

**India - Bangalore**  
Tel: 91-80-3090-4444

**India - New Delhi**  
Tel: 91-11-4160-8631

**India - Pune**  
Tel: 91-20-4121-0141

**Japan - Osaka**  
Tel: 81-6-6152-7160

**Japan - Tokyo**  
Tel: 81-3-6880-3770

**Korea - Daegu**  
Tel: 82-53-744-4301

**Korea - Seoul**  
Tel: 82-2-554-7200

**Malaysia - Kuala Lumpur**  
Tel: 60-3-7651-7906

**Malaysia - Penang**  
Tel: 60-4-227-8870

**Philippines - Manila**  
Tel: 63-2-634-9065

**Singapore**  
Tel: 65-6334-8870

**Taiwan - Hsin Chu**  
Tel: 886-3-577-8366

**Taiwan - Kaohsiung**  
Tel: 886-7-213-7830

**Taiwan - Taipei**  
Tel: 886-2-2508-8600

**Thailand - Bangkok**  
Tel: 66-2-694-1351

**Vietnam - Ho Chi Minh**  
Tel: 84-28-5448-2100

### EUROPE

**Austria - Wels**  
Tel: 43-7242-2244-39  
Fax: 43-7242-2244-393

**Denmark - Copenhagen**  
Tel: 45-4450-2828  
Fax: 45-4485-2829

**Finland - Espoo**  
Tel: 358-9-4520-820

**France - Paris**  
Tel: 33-1-69-53-63-20  
Fax: 33-1-69-30-90-79

**Germany - Garching**  
Tel: 49-8931-9700

**Germany - Haan**  
Tel: 49-2129-3766400

**Germany - Heilbronn**  
Tel: 49-7131-67-3636

**Germany - Karlsruhe**  
Tel: 49-721-625370

**Germany - Munich**  
Tel: 49-89-627-144-0  
Fax: 49-89-627-144-44

**Germany - Rosenheim**  
Tel: 49-8031-354-560

**Israel - Ra'anana**  
Tel: 972-9-744-7705

**Italy - Milan**  
Tel: 39-0331-742611  
Fax: 39-0331-466781

**Italy - Padova**  
Tel: 39-049-7625286

**Netherlands - Drunen**  
Tel: 31-416-690399  
Fax: 31-416-690340

**Norway - Trondheim**  
Tel: 47-7289-7561

**Poland - Warsaw**  
Tel: 48-22-3325737

**Romania - Bucharest**  
Tel: 40-21-407-87-50

**Spain - Madrid**  
Tel: 34-91-708-08-90  
Fax: 34-91-708-08-91

**Sweden - Gothenberg**  
Tel: 46-31-704-60-40

**Sweden - Stockholm**  
Tel: 46-8-5090-4654

**UK - Wokingham**  
Tel: 44-118-921-5800  
Fax: 44-118-921-5820