

Differential (LVPECL, LVDS) Crystal Oscillator

Features

- Ultra Low Jitter Performance, 3rd OT or Fundamental Crystal Design
- Extended Operating Temperature Range, -40°C to 105°C Option
- 10 MHz to 220 MHz Output Frequencies
- Excellent Power Supply Rejection Ratio
- Enable/Disable
- 1.8 (LVDS), 2.5 or 3.3V operation
- Hermetically Sealed 6-Lead 7.0 mm × 5.0 mm LDFN Ceramic Package
- Product is compliant to RoHS directive and fully compatible with lead free assembly (excluding Solder Dipped/_SNPB option)

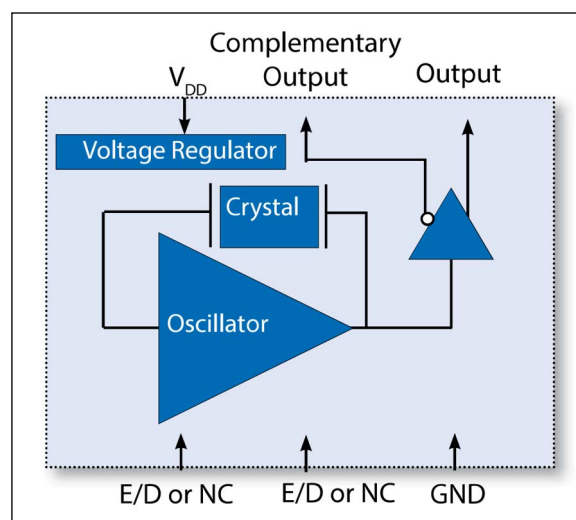
Applications

- Ethernet, GbE, Synchronous Ethernet
- PCIe
- Fiber Channel
- Enterprise Servers and Storage
- Test and Measurement
- GPON
- Clock source for ADC's, DAC's, FPGAs

General Description

Microchip's VC-711 Crystal Oscillator is a quartz stabilized, differential output oscillator, operating off either a 1.8V (LVDS), 2.5V, or 3.3V power supply in a hermetically sealed 6-Lead 7.0 mm × 5.0 mm LDFN ceramic package.

Block Diagram



1.0 ELECTRICAL CHARACTERISTICS

Absolute Maximum Ratings †

Supply Voltage	–0.5V to 5.0V
Enable/Disable Voltage	–0.5V to $V_{DD} + 0.5V$
ESD Rating, Human Body Model (Note 1)	1500V
ESD Rating, Charged Device Model (Note 1)	1500V

† **Notice:** Stresses in excess of the absolute maximum ratings can permanently damage the device. Functional operation is not implied or any other excess of conditions represented in the operational sections of this data sheet. Exposure to absolute maximum ratings for extended periods may adversely affect device reliability.

Note 1: Although ESD protection circuitry has been designed into the VC-711, proper precautions should be taken when handling and mounting. Microchip employs a Human Body Model and Charged Device Model for ESD susceptibility testing and design evaluation. ESD thresholds are dependent on the circuit parameters used to define the model. Although no industry standard has been adopted for the CDM, a standard resistance of 1.5 k Ω and capacitance of 100 pF is widely used and therefor can be used for comparison purposes.

ELECTRICAL CHARACTERISTICS, LVPECL OPTION

Parameter	Sym.	Min.	Typ.	Max.	Units	Conditions
Supply						
Supply Voltage (Note 1)	V _{DD}	2.375	2.5	2.625	V	Ordering Option
		3.135	3.3	3.465		
2.5V Current Consumption	I _{DD}	—	—	61	mA	—
3.3V Current Consumption,		—	—	69		
Frequency						
Nominal Frequency	f _N	10	—	220	MHz	Ordering Option
Stability (Note 2)	—	—	—	±20	ppm	Ordering Option
		—	—	±25		
		—	—	±50		
		—	—	±100		
Outputs						
Output Logic Level Low (Note 3)	V _{OL}	V _{DD} – 1.810	—	V _{DD} – 1.620	V	—
Output Logic Level High (Note 3)	V _{OH}	V _{DD} – 1.025	—	V _{DD} – 0.880		
Output Rise and Fall Time (Note 3, Note 4)	t _r /t _f	—	—	450	ps	—
Load	—	50Ω into V _{DD} – 2.0V			—	—
Duty Cycle (Note 5)	DC	45	—	55	%	—

- Note 1:** The VC-711 power supply should be filtered. For example, a 10 μF , 0.1 μF , and 0.01 μF capacitor.
- 2:** Includes calibration tolerance, operating temperature, supply voltage variations, aging, and IR reflow.
- 3:** Figure 1-1 defines the test circuit and Figure 1-2 defines these parameters.
- 4:** Output rise and fall time will be 600 ps maximum for –40°C to +105°C operating temperature range.
- 5:** Duty Cycle is measured as On/Time Period.
- 6:** Measured using an Agilent E5052 Signal Source Analyzer at 25°C.
- 7:** Outputs will be enabled if Enable/Disable is left open.

ELECTRICAL CHARACTERISTICS, LVPECL OPTION (CONTINUED)

Parameter	Sym.	Min.	Typ.	Max.	Units	Conditions
Phase Noise, 3.3V, 156.25 MHz (Note 6)	ϕ_N	—	–74	—	dBc/Hz	10 Hz
		—	–105	—		100 Hz
		—	–134	—		1 kHz
		—	–147	—		10 kHz
		—	–155	—		100 kHz
		—	–156	—		1 MHz
		—	–158	—		20 MHz
Phase Jitter, 156.25 MHz, 12 kHz to 20 MHz (Note 6)	ϕ_J	—	75	100	fs	—
Enable/Disable						
Outputs Enabled (Note 7)	V_{IH}	$0.7 \times V_{DD}$	—	—	V	—
Outputs Disabled	V_{IL}	—	—	$0.3 \times V_{DD}$	V	—
Disable Time	t_D	—	—	200	ns	—
Enable/Disable Leakage Current	$I_{E/D}$	—	—	± 200	μA	—
Start-Up Time	t_{SU}	—	—	10	ms	—
Operating Temperature	T_{OP}	–10	—	70	$^{\circ}C$	Ordering Option
		–40	—	85		
		–40	—	105		

- Note 1:** The VC-711 power supply should be filtered. For example, a 10 μF , 0.1 μF , and 0.01 μF capacitor.
- Note 2:** Includes calibration tolerance, operating temperature, supply voltage variations, aging, and IR reflow.
- Note 3:** Figure 1-1 defines the test circuit and Figure 1-2 defines these parameters.
- Note 4:** Output rise and fall time will be 600 ps maximum for $-40^{\circ}C$ to $+105^{\circ}C$ operating temperature range.
- Note 5:** Duty Cycle is measured as On/Time Period.
- Note 6:** Measured using an Agilent E5052 Signal Source Analyzer at $25^{\circ}C$.
- Note 7:** Outputs will be enabled if Enable/Disable is left open.

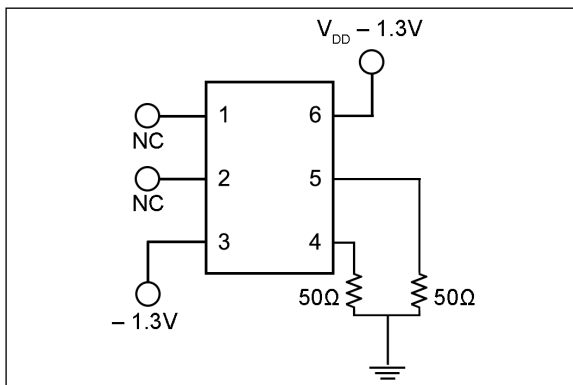


FIGURE 1-1: LVPECL Test Circuit.

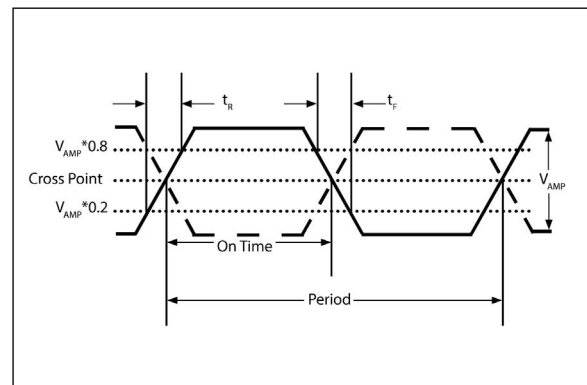


FIGURE 1-2: Output Rise/Fall Time.

ELECTRICAL CHARACTERISTICS, LVDS OPTION

Parameter	Sym.	Min.	Typ.	Max.	Units	Conditions
Supply						
Supply Voltage (Note 1)	V _{DD}	1.71	1.8	1.89	V	Ordering Option
		2.371	2.5	2.625		
		3.135	3.3	3.465		
1.8V Current Consumption	I _{DD}	—	—	21	mA	—
2.5V Current Consumption		—	—	29		
3.3V Current Consumption		—	—	33		
Frequency						
Nominal Frequency	f _N	10	—	220	MHz	Ordering Option
		100	—	175		1.8V
Stability (Note 2)	—	—	—	±20	ppm	Ordering Option
		—	—	±25		
		—	—	±50		
		—	—	±100		
Outputs						
Output Logic Level High (Note 3)	V _{OH}	—	1.43	1.6	V	—
Output Logic Level Low (Note 3)	V _{OL}	0.9	1.10	—		
Output Amplitude		247	350	454	mV	—
Differential Output Error		—	—	50	mV	—
Offset Voltage		1.125	1.25	1.375	V	—
Offset Voltage Error		—	—	50	mV	—
Output Leakage Current		—	—	10	μA	Outputs Disabled
Output Rise and Fall Time	t _r /t _f	—	—	450	ps	Note 3, Note 4
Load		100Ω Differential			—	—
Duty Cycle (Note 5)	DC	45	—	55	%	—
Phase Noise, 3.3V, 156.25 MHz (Note 6)	φ _N	—	−69	—	dBc/Hz	10 Hz
		—	−102	—		100 Hz
		—	−130	—		1 kHz
		—	−148	—		10 kHz
		—	−154	—		100 kHz
		—	−156	—		1 MHz
		—	−159	—		20 MHz

- Note 1:** The VC-711 power supply should be filtered. For example, a 10 μF, 0.1 μF, and 0.01 μF capacitor.
- Note 2:** Includes calibration tolerance, operating temperature, supply voltage variations, aging, and IR reflow.
- Note 3:** [Figure 1-3](#) defines the test circuit and [Figure 1-2](#) defines these parameters.
- Note 4:** Output rise and fall time will be 600 ps (max) for -40/105°C operating temperature range and 500 ps (max) for 1.8V.
- Note 5:** Duty Cycle is defined as the On/Time Period.
- Note 6:** Measured using an Agilent E5052 Signal Source Analyzer at 25°C.
- Note 7:** Outputs will be enabled if Enable/Disable is left open.

ELECTRICAL CHARACTERISTICS, LVDS OPTION (CONTINUED)

Parameter	Sym.	Min.	Typ.	Max.	Units	Conditions
Phase Jitter, 156.25 MHz, 12 kHz to 20 MHz (Note 6)	ϕ_J	—	75	100	fs	—
Enable/Disable						
Outputs Enabled (Note 7)	V_{IH}	$0.7 \times V_{DD}$	—	—	V	—
Outputs Disabled	V_{IL}	—	—	$0.3 \times V_{DD}$	V	—
Disable Time	t_D	—	—	200	ns	—
Enable/Disable Leakage Current	$I_{E/D}$	—	—	± 200	μA	—
Start-Up Time	t_{SU}	—	—	10	ms	—
Operating Temperature	T_{OP}	–10	—	70	$^{\circ}C$	Ordering Option
		–40	—	85		
		–40	—	105		

- Note 1:** The VC-711 power supply should be filtered. For example, a 10 μF , 0.1 μF , and 0.01 μF capacitor.
- 2:** Includes calibration tolerance, operating temperature, supply voltage variations, aging, and IR reflow.
- 3:** Figure 1-3 defines the test circuit and Figure 1-2 defines these parameters.
- 4:** Output rise and fall time will be 600 ps (max) for –40/105 $^{\circ}C$ operating temperature range and 500 ps (max) for 1.8V.
- 5:** Duty Cycle is defined as the On/Time Period.
- 6:** Measured using an Agilent E5052 Signal Source Analyzer at 25 $^{\circ}C$.
- 7:** Outputs will be enabled if Enable/Disable is left open.

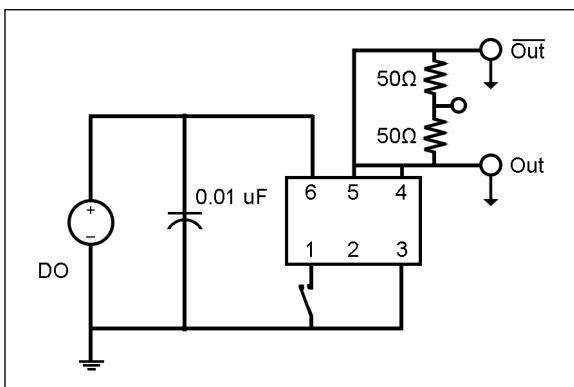


FIGURE 1-3: LVDS Test Circuit.

2.0 PIN DESCRIPTIONS

The descriptions of the pins are listed in [Table 2-1](#).

TABLE 2-1: PIN FUNCTION TABLE

Pin Number	Pin Name	Description
1	E/D or NC	Enable/Disable or No Connection. (Note 1)
2	E/D or NC	Enable/Disable or No Connection. (Note 1)
3	GND	Electrical and lid ground.
4	f_O	Output frequency.
5	Cf_O	Complementary output frequency.
6	V_{DD}	Supply voltage.

Note 1: Enable/Disable can be provided on Pin 1 or Pin 2.

TABLE 2-2: ENABLE/DISABLE FUNCTION

E/D Pin	Output
High	Clock Output
Open	Clock Output
Low	High Impedance

3.0 APPLICATION DIAGRAMS

3.1 LVPECL Application Diagrams

The VC-711 incorporates a standard PECL output scheme, which are unterminated FET drains. There are numerous application notes on terminating and interfacing PECL logic and the two most common methods are a single resistor to ground, [Figure 3-1](#), or for best 50Ω matching a pull-up/pull-down scheme as shown in [Figure 3-2](#) should be used. AC coupling capacitors are optional, depending on the application and the input logic requirements of the next stage.

One of the most important considerations is terminating the Output and Complementary Outputs equally. An unused output should not be left unterminated, and if it one of the two outputs is left open it will result in excessive jitter on both. PC board layout must take this and 50Ω impedance matching into account. Load matching and power supply noise are the main contributors to jitter related problems.

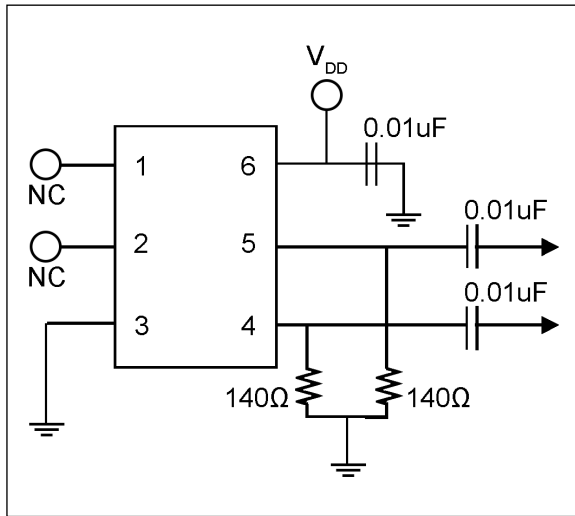


FIGURE 3-1: Single Resistor Termination Scheme.

Resistor values are typically 140Ω for 3.3V operation and 84Ω for 2.5V operation.

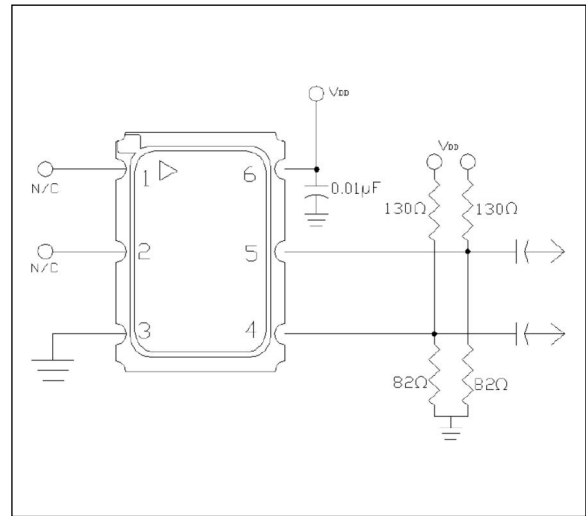


FIGURE 3-2: Pull-Up/Pull-Down Termination.

Resistor values shown are typical for 3.3 V operation. For 2.5V operation, the resistor to ground is 62Ω and the resistor to supply is 250Ω.

3.2 LVDS Application Diagrams

One of the most important considerations is terminating the Output and Complementary Outputs equally. An unused output should not be left unterminated, and if one of the two outputs is left open it will result in excessive jitter on both. PC board layout must take this and 50Ω impedance matching into account. Load matching and power supply noise are the main contributors to jitter related problems.

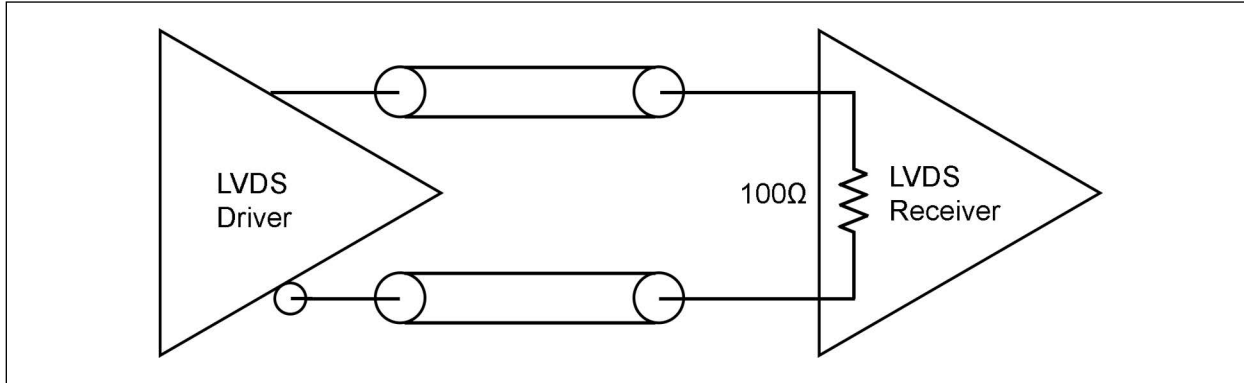


FIGURE 3-3: LVDS-to-LVDS Connection, Internal 100Ω Resistor.

Some LVDS structures have an internal 100Ω resistor on the input and do not need additional components. AC blocking capacitors can be used if the DC levels are incompatible.

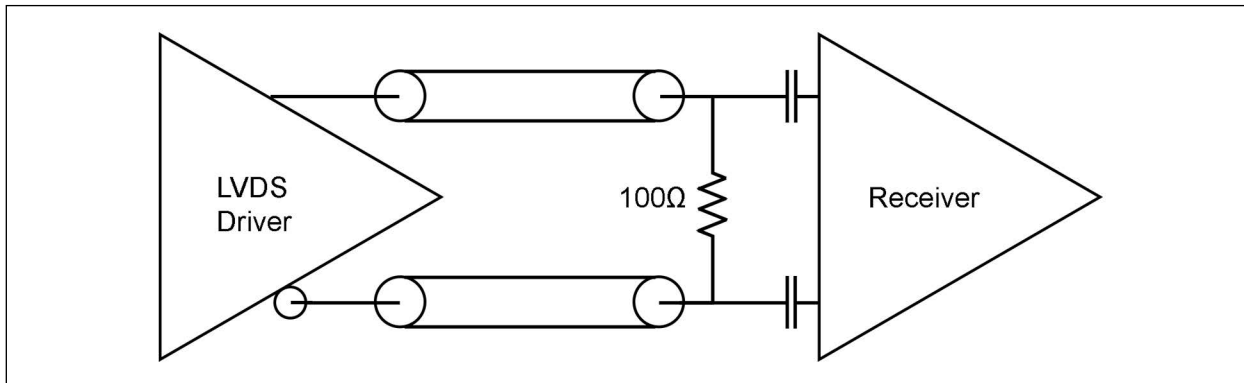


FIGURE 3-4: LVDS-to-LVDS Connection.

Some input structures may not have an internal 100Ω resistor on the input and will need an external 100Ω resistor for impedance matching. Also, the input may have an internal DC bias that may not be compatible with LVDS levels, AC blocking capacitors can be used.

4.0 RELIABILITY

Microchip qualification will include aging at various extreme temperatures, shock and vibration, temperature cycling, and IR reflow simulation. The VC-711 family is capable of meeting the following qualification tests.

TABLE 4-1: ENVIRONMENTAL COMPLIANCE

Parameter	Condition
Mechanical Shock	MIL-STD-883 Method 2002
Mechanical Vibration	MIL-STD-883 Method 2007
Temperature Cycle	MIL-STD-883 Method 1010
Solderability	MIL-STD-883 Method 2003
Fine and Gross Leak	MIL-STD-883 Method 1014
Resistance to Solvents	MIL-STD-202 Method 2015
Moisture Sensitivity Level	MSL1
Contact Pads	Gold (0.3-1.0 μm) over Nickel
Max Junction Temperature (θ_{JC} , bottom of case)	24°C/W, 150°C
Weight	182 mg

5.0 IR REFLOW

Devices are built using lead-free epoxy and can be subjected to standard lead free IR reflow conditions shown in [Table 5-1](#). Contact pads are gold over nickel and lower maximum temperatures can also be used, such as 220°C.

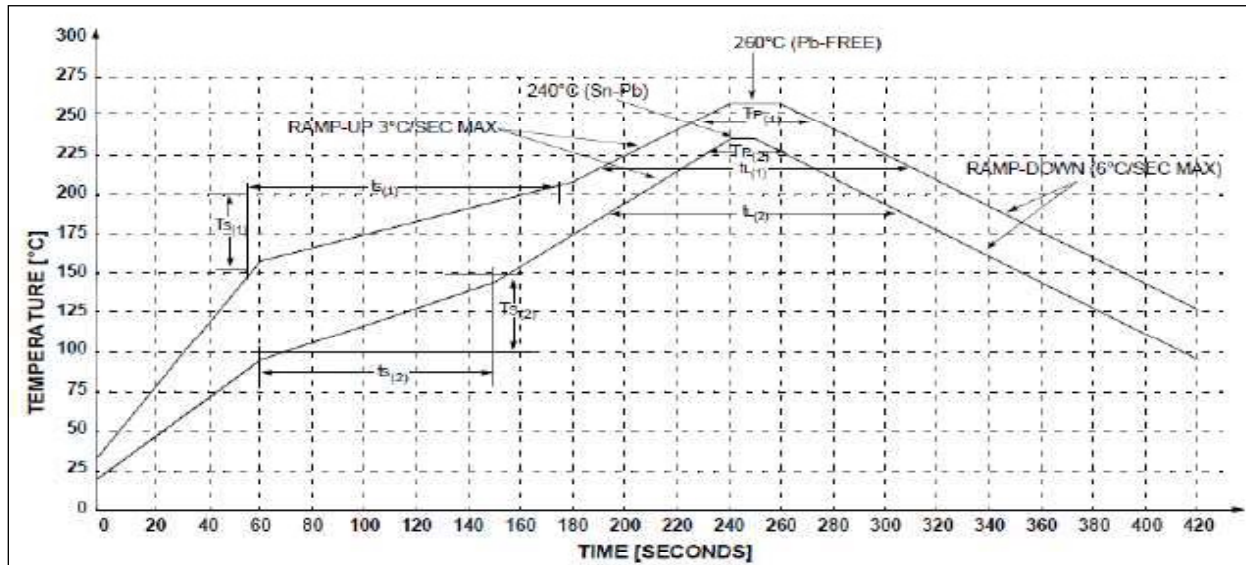


FIGURE 5-1: Solder Profile.

TABLE 5-1: REFLOW PROFILE

Symbol	Minimum	Maximum	Conditions
T _{S(1)}	150°C	200°C	Pb-Free
T _{S(2)}	100°C	150°C	_SNPB Option
t _{S(1)}	60 sec.	180 sec.	Pb-Free
t _{S(2)}	60 sec.	120 sec.	_SNPB Option
t _{L(1)}	60 sec.	150 sec.	Pb-Free
t _{L(2)}	60 sec.	150 sec.	_SNPB Option
T _{P(1)}	245°C	260°C	Pb-Free
T _{P(2)}	225°C	240°C	_SNPB Option

6.0 TAPE AND REEL

TABLE 6-1: TAPE AND REEL DIMENSIONS

Tape Dimensions (mm)						Reel Dimensions (mm)							
Dimension	W	F	Do	Po	P1	A	B	C	D	N	W1	W2	# per Reel
Tolerance	Typ	Typ	Typ	Typ	Typ	Typ	Typ	Typ	Typ	Typ	Typ	Max	
VC-711	16	7.5	1.5	4	8	180	2	13	21	50	17	21	1000

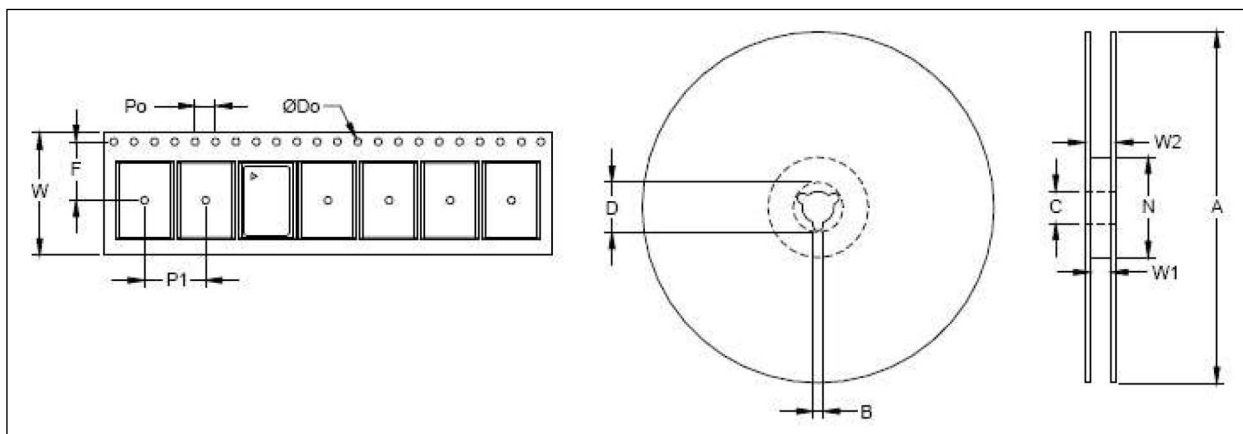


FIGURE 6-1: Tape and Reel Diagram.

7.0 PACKAGING INFORMATION

6-Lead 7 mm x 5 mm LDFN Package Outline and Recommended Land Pattern

Note: For the most current package drawings, please see the Microchip Packaging Specification located at <http://www.microchip.com/packaging>

Marking Information:

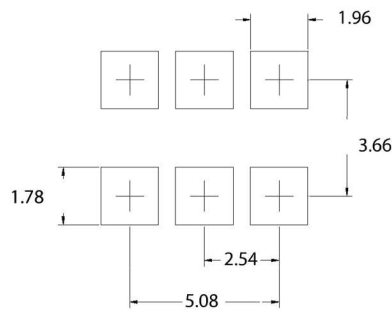
XXXMXX = Frequency (example: 100M00 = 100.000 MHz)

YY = Year of Manufacture

WW = Week of the Year

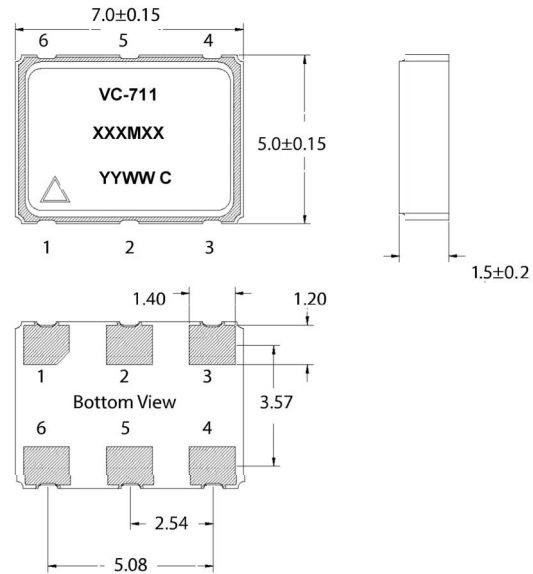
C = Manufacturing Location

▲ = Pin 1 Indicator



Pad Layout

Units are mm



APPENDIX A: REVISION HISTORY

Revision A (May 2025)

- Converted Vectron document VC-711 to Microchip data sheet template DS20007011A.
- Minor text changes throughout for clarity and correctness.

NOTES:

PRODUCT IDENTIFICATION SYSTEM

To order or obtain information, e.g., on pricing or delivery, contact your local Microchip representative or sales office.

<u>Device</u>	<u>-X</u>	<u>X</u>	<u>X</u>	<u>-X</u>	<u>X</u>	<u>X</u>	<u>X</u>	<u>-XXXXXXXXXX</u>	<u>XX</u>
Part No.	Power Supply	Output	Temp. Range	Stability	E/D Logic	E/D Pin	Custom Options	Frequency	Packaging

Device:	VC-711	=	Differential (LVPECL, LVDS) Crystal Oscillator in 6-Lead LDFN						
Power Supply:	E	=	3.3 Vdc $\pm 5\%$						
	H	=	2.5 Vdc $\pm 5\%$						
	J	=	1.8 Vdc $\pm 5\%$ (LVDS)						
Output:	C	=	LVPECL						
	D	=	LVDS						
Temperature Range:	W	=	-10°C to $+70^{\circ}\text{C}$						
	E	=	-40°C to $+85^{\circ}\text{C}$						
	F	=	-40°C to $+105^{\circ}\text{C}$						
Stability:	E	=	± 20 ppm						
	F	=	± 25 ppm						
	K	=	± 50 ppm						
	S	=	± 100 ppm						
Enable/Disable Logic:	A	=	Output Enabled with a Logic High or Open, Output is Disabled with a Logic Low						
Enable/Disable Pin:	A	=	Pin 1 (Pin 2 = No Connect)						
	B	=	Pin 2 (Pin 1 = No Connect)						
Custom Options:	N	=	Standard option						
Frequency:	xxxMxxxxxx	=	Frequency in MHz						
Packaging:	TR	=	1000/Reel (LVPECL)						
	<blank>	=	1000/Reel (LVDS)						
	<blank>	=	Non-standard T/R or Cut Tape quantities (LVDS or LVPECL)						
	_SNPB	=	Tin Lead Solder Dipped						

Note 1: Not all combinations of options are available. Other specifications may be available upon request.

2: Tape and Reel identifier only appears in the catalog part number description. This identifier is used for ordering purposes and is not printed on the device package. Check with your Microchip Sales Office for package availability with the Tape and Reel option.

Examples:

a) VC-711-ECE-EAAN-156M250000TR:

VC-711, 3.3 Vdc, LVPECL Output, -40°C to $+85^{\circ}\text{C}$ Temp Range, ± 20 ppm Stability, Output Enabled, Pin 1 Enable/Disable, Standard Option, 156.25 MHz, 1000/Reel

b) VC-711-ECW-FAAN-160M000000:

VC-711, 3.3 Vdc, LVPECL Output, -10°C to $+70^{\circ}\text{C}$ Temp Range, ± 25 ppm Stability, Output Enabled, Pin 1 Enable/Disable, Standard Option, 160.00 MHz, 1/Non-standard T/R

c) VC-711-EDE-EAAN-50M000000TR:

VC-711, 3.3 Vdc, LVDS Output, -40°C to $+85^{\circ}\text{C}$ Temp Range, ± 20 ppm Stability, Output Enabled, Pin 1 Enable/Disable, Standard Option, 50.00 MHz, 1000/Reel

d) VC-711-HCE-FAAN-128M000000:

VC-711, 2.5 Vdc, LVPECL Output, -40°C to $+85^{\circ}\text{C}$ Temp Range, ± 25 ppm Stability, Output Enabled, Pin 1 Enable/Disable, Standard Option, 128.00 MHz, 1/Non-standard T/R

e) VC-711-HDW-KAAN-156M253900:

VC-711, 2.5 Vdc, LVDS Output, -10°C to $+70^{\circ}\text{C}$ Temp Range, ± 50 ppm Stability, Output Enabled, Pin 1 Enable/Disable, Standard Option, 156.2539 MHz, 250/Non-standard T/R

f) VC-711-JDE-KAAN-156M250000:

VC-711, 1.8 Vdc, LVDS Output, -40°C to $+85^{\circ}\text{C}$ Temp Range, ± 50 ppm Stability, Output Enabled, Pin 1 Enable/Disable, Standard Option, 156.25 MHz, 10/Non-standard T/R

TABLE 0-1: STANDARD OUTPUT FREQUENCIES

10.000000 MHz	25.000000 MHz	50.000000 MHz	100.000000 MHz	120.000000 MHz	125.000000 MHz
128.000000 MHz	155.000000 MHz	155.520000 MHz	156.250000 MHz	156.253900 MHz	160.000000 MHz
200.000000 MHz	—	—	—	—	—

Microchip Information

Trademarks

The “Microchip” name and logo, the “M” logo, and other names, logos, and brands are registered and unregistered trademarks of Microchip Technology Incorporated or its affiliates and/or subsidiaries in the United States and/or other countries (“Microchip Trademarks”). Information regarding Microchip Trademarks can be found at <https://www.microchip.com/en-us/about/legal-information/microchip-trademarks>.

ISBN: 979-8-3371-1321-0

Legal Notice

This publication and the information herein may be used only with Microchip products, including to design, test, and integrate Microchip products with your application. Use of this information in any other manner violates these terms. Information regarding device applications is provided only for your convenience and may be superseded by updates. It is your responsibility to ensure that your application meets with your specifications. Contact your local Microchip sales office for additional support or, obtain additional support at www.microchip.com/en-us/support/design-help/client-support-services.

THIS INFORMATION IS PROVIDED BY MICROCHIP "AS IS". MICROCHIP MAKES NO REPRESENTATIONS OR WARRANTIES OF ANY KIND WHETHER EXPRESS OR IMPLIED, WRITTEN OR ORAL, STATUTORY OR OTHERWISE, RELATED TO THE INFORMATION INCLUDING BUT NOT LIMITED TO ANY IMPLIED WARRANTIES OF NON-INFRINGEMENT, MERCHANTABILITY, AND FITNESS FOR A PARTICULAR PURPOSE, OR WARRANTIES RELATED TO ITS CONDITION, QUALITY, OR PERFORMANCE.

IN NO EVENT WILL MICROCHIP BE LIABLE FOR ANY INDIRECT, SPECIAL, PUNITIVE, INCIDENTAL, OR CONSEQUENTIAL LOSS, DAMAGE, COST, OR EXPENSE OF ANY KIND WHATSOEVER RELATED TO THE INFORMATION OR ITS USE, HOWEVER CAUSED, EVEN IF MICROCHIP HAS BEEN ADVISED OF THE POSSIBILITY OR THE DAMAGES ARE FORESEEABLE. TO THE FULLEST EXTENT ALLOWED BY LAW, MICROCHIP'S TOTAL LIABILITY ON ALL CLAIMS IN ANY WAY RELATED TO THE INFORMATION OR ITS USE WILL NOT EXCEED THE AMOUNT OF FEES, IF ANY, THAT YOU HAVE PAID DIRECTLY TO MICROCHIP FOR THE INFORMATION.

Use of Microchip devices in life support and/or safety applications is entirely at the buyer's risk, and the buyer agrees to defend, indemnify and hold harmless Microchip from any and all damages, claims, suits, or expenses resulting from such use. No licenses are conveyed, implicitly or otherwise, under any Microchip intellectual property rights unless otherwise stated.

Microchip Devices Code Protection Feature

Note the following details of the code protection feature on Microchip products:

- Microchip products meet the specifications contained in their particular Microchip Data Sheet.
- Microchip believes that its family of products is secure when used in the intended manner, within operating specifications, and under normal conditions.
- Microchip values and aggressively protects its intellectual property rights. Attempts to breach the code protection features of Microchip product is strictly prohibited and may violate the Digital Millennium Copyright Act.
- Neither Microchip nor any other semiconductor manufacturer can guarantee the security of its code. Code protection does not mean that we are guaranteeing the product is “unbreakable”. Code protection is constantly evolving. Microchip is committed to continuously improving the code protection features of our products.