
Mounting Instruction for Baseless Power Module

Introduction

This application note provides recommendations to appropriately mount the baseless power module to the heat sink and PCB. Follow the mounting instructions to limit both the thermal and mechanical stresses.

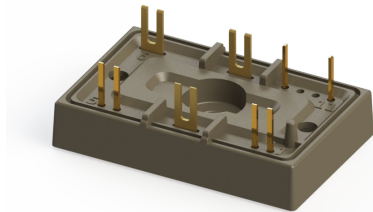
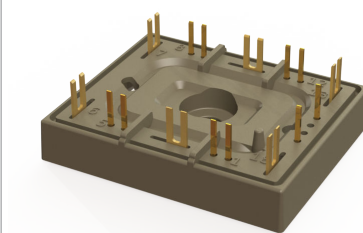
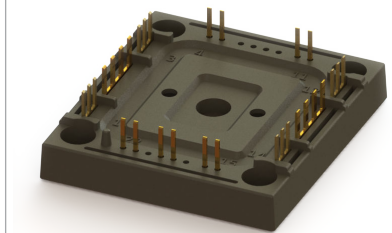
Figure 1. BL1 Power Module**Figure 2. BL2 Power Module****Figure 3. BL3 Power Module**

Table of Contents

Introduction.....	1
1. Interface Between Baseless Power Module and Heat Sink.....	3
2. Mounting the Baseless Module to the Heat Sink.....	4
3. PCB Assembly on the Baseless Power Module.....	5
4. BL1, BL2, and BL3 Assembly on the Same PCB.....	7
5. Conclusion.....	9
6. Revision History.....	10
The Microchip Website.....	11
Product Change Notification Service.....	11
Customer Support.....	11
Microchip Devices Code Protection Feature.....	11
Legal Notice.....	11
Trademarks.....	12
Quality Management System.....	13
Worldwide Sales and Service.....	14

1. Interface Between Baseless Power Module and Heat Sink

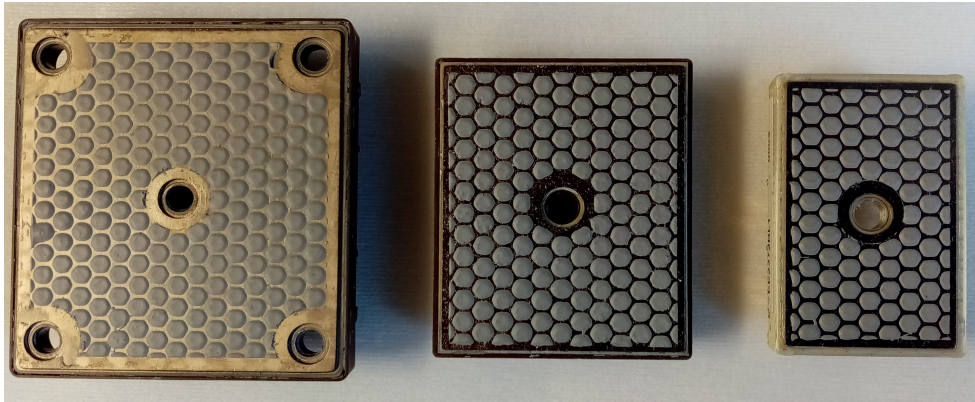
This section describes the interface between baseless power module and heat sink.

Phase Change Material (PCM) Deposition

To achieve the lowest case to heat sink thermal resistance, a phase change material deposition in honeycomb can be applied on the baseless power module. Use a screen-printing technique to ensure a uniform deposition of a minimum thickness of 150 μm to 200 μm (5.9 mils to 7.8 mils) on the baseless power module, as shown in the following figure.

Microchip recommends Loctite PSX-Pe. This kind of thermal interface minimizes the pump-out. pump-out is caused from thermal cycling that occurs between the two mating surfaces.

Figure 1-1. PCM Deposition on Baseless Power Module Before Assembly to the Heat Sink



Aluminum Foils with PCM

To achieve the lowest case-to-heat sink thermal resistance, the aluminum foil with PCM on both the sides (Kunze Crayotherm—KU-ALF5) can be applied between the baseless power module and the heat sink as shown in the following figure.

Figure 1-2. Aluminum Foil with PCM on Both Sides (Kunze Crayotherm - KU-ALF5) for a BL3 Baseless Module



2. Mounting the Baseless Module to the Heat Sink

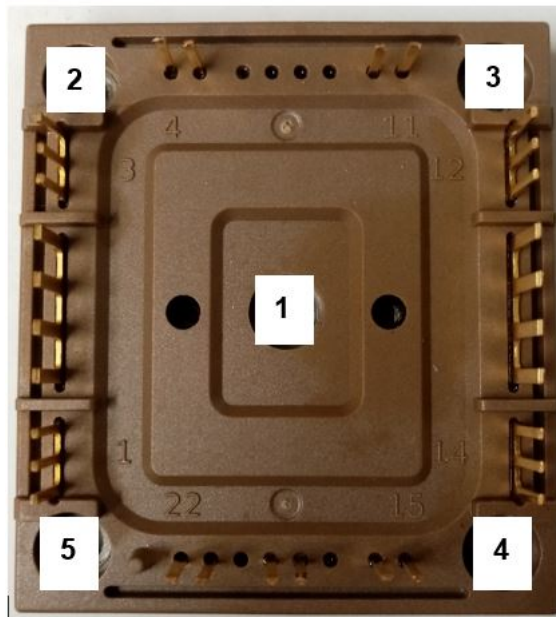
Proper mounting of the baseless power module to the heat sink is essential to guarantee good heat transfer. The heat sink and the baseless power module contact surface must be flat and clean (no dirt, no corrosion, and no damage) to avoid mechanical stress when the baseless power module is mounted and to avoid an increase in thermal resistance.

Note: Recommended flatness is $<50\ \mu\text{m}$ for 100 mm continuous and recommended roughness is Rz 10.

Place the baseless power module with the PCM or the aluminum foil with PCM above the heat sink holes and apply a small pressure to it.

- **For the BL1 and BL2 baseless power module:**
Insert the M4 screw and the spring washer (DIN 137A) in the mounting hole. The screw head and washer diameter must be at 8 mm typical. Tighten the screw until this final torque value is reached. (See the *product datasheet* for the maximum torque allowed).
- **For the BL3 baseless power module:**
Insert the M3 screws and the spring washers (DIN 137A) in the mounting holes. The screw head and washer diameter must be at 6 mm typical.

Figure 2-1. BL3 Baseless Power Module



- The five M3 screws must be torqued to 1/3 of the final torque. Order: 1 – 2 – 4 – 3 – 5.
- The five M3 screws must be torqued to 2/3 of the final torque. Order: 1 – 5 – 3 – 4 – 2.
- The five M3 screws must be torqued to the final torque. Order: 3 – 5 – 4 – 2 – 1.

See the *product datasheet* for the maximum torque allowed. To perform this operation for all the baseless power modules, use a screwdriver with controlled torque.

3. PCB Assembly on the Baseless Power Module

The following are the steps to assemble PCB on the baseless power module.

1. Place the spacers on the heat sink close to the baseless power module. The spacers must be at 10 ± 0.1 mm tall.

Note: The baseless module is 9.3 mm tall.

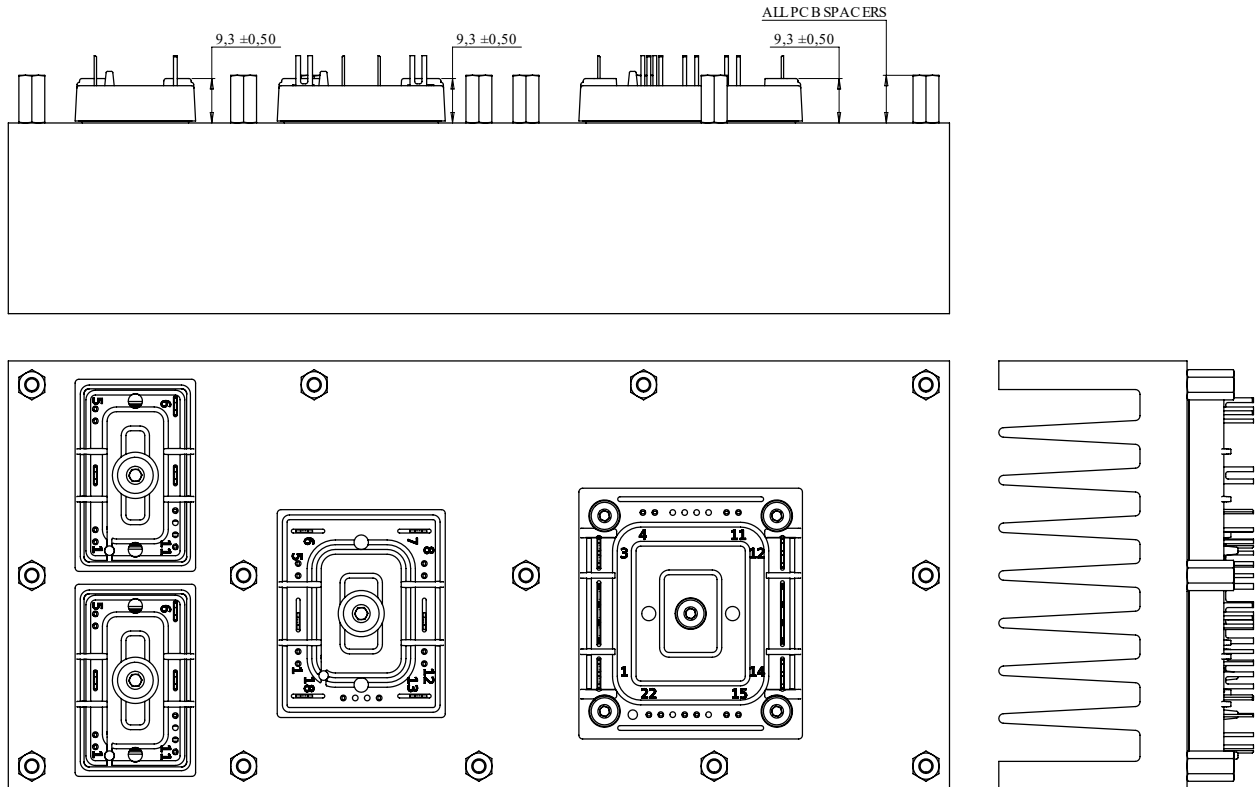
The spacers must be close to the baseless power modules to avoid any vibrations while respecting insulation requirements, as shown in the following figure. The PCB must be mounted to the baseless power module and screwed to the spacers. A mounting torque of 0.6 N.m (5 lbf-in) is recommended.

2. Solder all electrical pins of the power module to the PCB. No clean solder flux is required to attach the PCB onto the module since aqueous module cleaning is not allowed.

Note: Do not reverse these two steps, because if all pins are soldered first to the PCB, screwing the PCB onto the spacers creates a deformation of the PCB, leading to mechanical stress that can damage the tracks or break the components on the PCB.

For efficient production, a wave soldering process can be used to solder the terminals to the PCB. Each application, heat sink and PCB can be different; wave soldering must be evaluated on a case-by-case basis. In any case, a well-balanced layer of solder must surround each pin.

Figure 3-1. General Assembly View



Holes in the PCB (see [Figure 4-1](#)) are necessary to remove the mounting screws that bolt down the baseless power module to the heat sink. These access holes must be large for the screw head and washers to pass through freely, allowing for normal tolerance in PCB hole location.

The gap between the bottom of the PCB and the baseless power module is very low. Microchip does not recommend using through hole components above the module. To reduce the switching over voltages, SMD decoupling capacitors of the power terminals VBUS and 0/VBUS can be used. (See [Figure 4-1](#)).

Ensure safety while handling heavy components like electrolytic or polypropylene capacitors, transformers, or inductors placed around the power module. If these components are in the same area, add spacers such that the weight of these components on the board is not handled by the baseless power module but by the spacers.

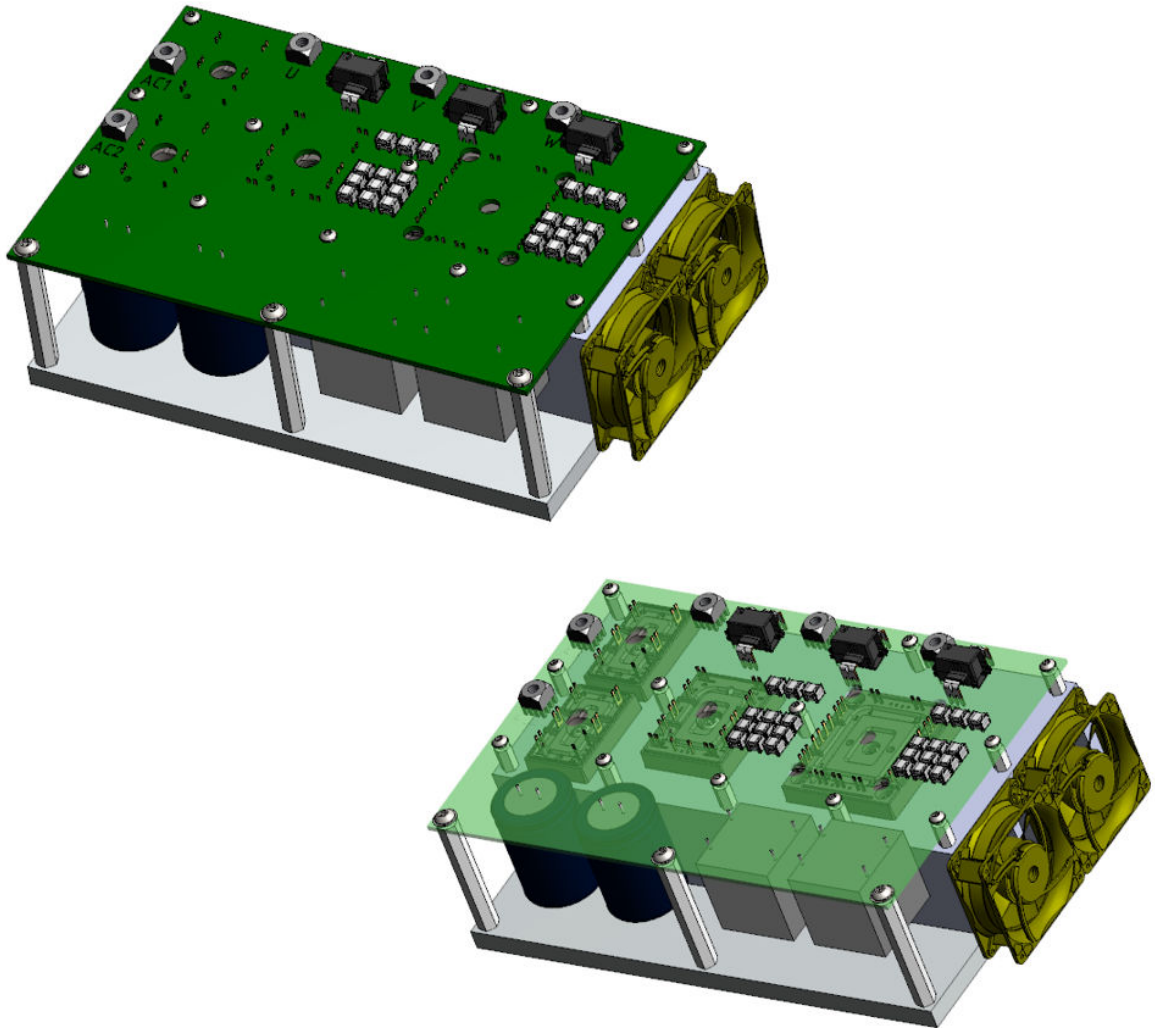
The pin out can change according to the configuration. See the *product datasheet* for the pin out location.

Each application, PCM, PCB, and spacers placement is different and must be evaluated on a case-by-case basis.

4. BL1, BL2, and BL3 Assembly on the Same PCB

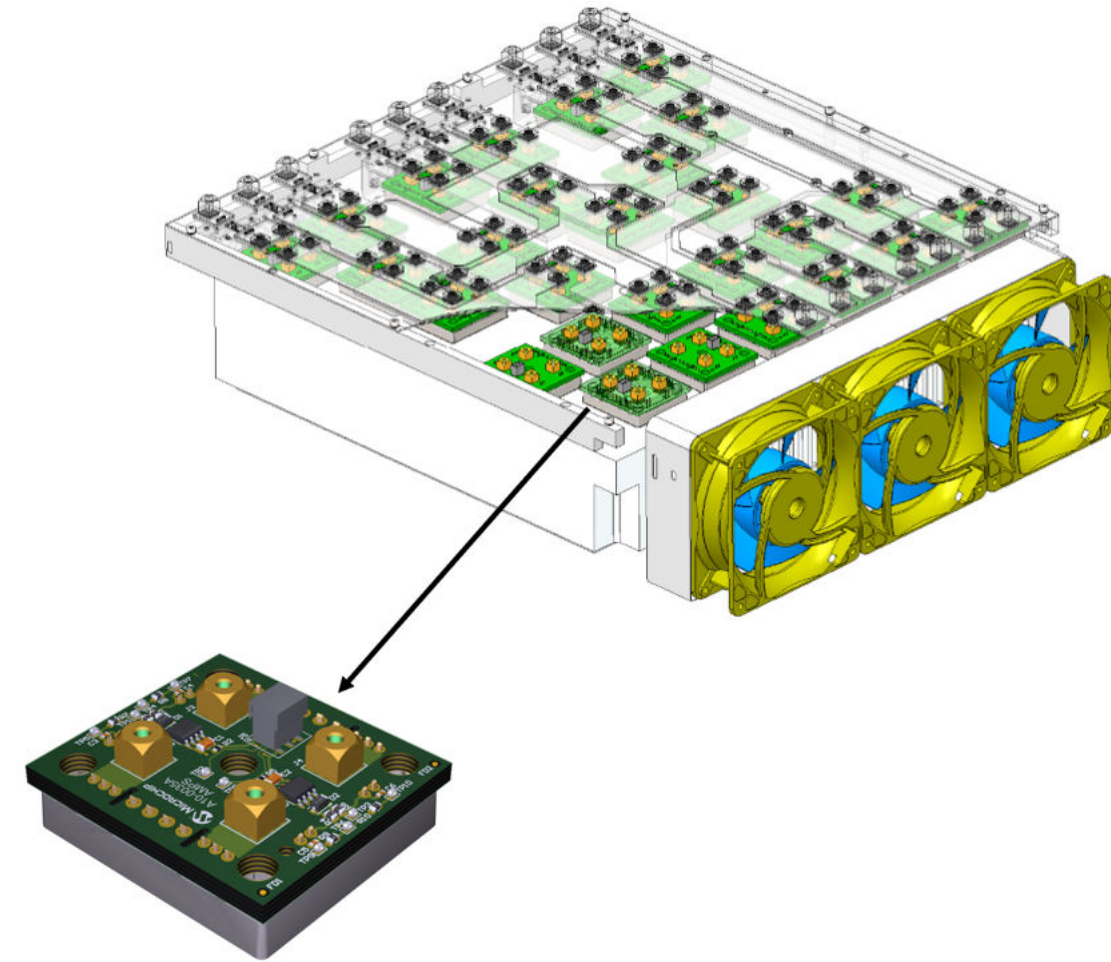
1. Assembly description is made of three baseless power modules:
Two BL1 baseless power modules for the rectifier bridge, one BL2, and one BL3 baseless power module for the three-phase bridge configuration.

Figure 4-1. Baseless Modules Assembly on the Same PCB



- Assembly for a dual AC switch on a BL3 power module to perform a contact matrix for aircraft power generation (up to 50 kW).

Figure 4-2. BL3 Baseless Modules Assembly for a Dual AC Switch on the Same PCB



5. Conclusion

This application note provides recommendations regarding the mounting of the baseless module. Applying these instructions will help decreasing the mechanical stress on PCB and baseless power module to ensure long term operation of the system. Mounting instructions to the heat sink must also be followed to achieve the lowest thermal resistance from the power chips down to the cooler. All these operations are essential to guarantee the best system reliability.

6. Revision History

Revision	Date	Description
A	11/2021	The following changes are made in this revision: <ul style="list-style-type: none">• Updated the document as per Microchip standards.• The document number was updated to DS00004306.• Application note number was updated to AN4306.

The Microchip Website

Microchip provides online support via our website at www.microchip.com/. This website is used to make files and information easily available to customers. Some of the content available includes:

- **Product Support** – Data sheets and errata, application notes and sample programs, design resources, user's guides and hardware support documents, latest software releases and archived software
- **General Technical Support** – Frequently Asked Questions (FAQs), technical support requests, online discussion groups, Microchip design partner program member listing
- **Business of Microchip** – Product selector and ordering guides, latest Microchip press releases, listing of seminars and events, listings of Microchip sales offices, distributors and factory representatives

Product Change Notification Service

Microchip's product change notification service helps keep customers current on Microchip products. Subscribers will receive email notification whenever there are changes, updates, revisions or errata related to a specified product family or development tool of interest.

To register, go to www.microchip.com/pcn and follow the registration instructions.

Customer Support

Users of Microchip products can receive assistance through several channels:

- Distributor or Representative
- Local Sales Office
- Embedded Solutions Engineer (ESE)
- Technical Support

Customers should contact their distributor, representative or ESE for support. Local sales offices are also available to help customers. A listing of sales offices and locations is included in this document.

Technical support is available through the website at: www.microchip.com/support

Microchip Devices Code Protection Feature

Note the following details of the code protection feature on Microchip products:

- Microchip products meet the specifications contained in their particular Microchip Data Sheet.
- Microchip believes that its family of products is secure when used in the intended manner, within operating specifications, and under normal conditions.
- Microchip values and aggressively protects its intellectual property rights. Attempts to breach the code protection features of Microchip product is strictly prohibited and may violate the Digital Millennium Copyright Act.
- Neither Microchip nor any other semiconductor manufacturer can guarantee the security of its code. Code protection does not mean that we are guaranteeing the product is "unbreakable". Code protection is constantly evolving. Microchip is committed to continuously improving the code protection features of our products.

Legal Notice

This publication and the information herein may be used only with Microchip products, including to design, test, and integrate Microchip products with your application. Use of this information in any other manner violates these terms. Information regarding device applications is provided only for your convenience and may be superseded by updates. It is your responsibility to ensure that your application meets with your specifications. Contact your local Microchip sales office for additional support or, obtain additional support at www.microchip.com/en-us/support/design-help/client-support-services.

THIS INFORMATION IS PROVIDED BY MICROCHIP "AS IS". MICROCHIP MAKES NO REPRESENTATIONS OR WARRANTIES OF ANY KIND WHETHER EXPRESS OR IMPLIED, WRITTEN OR ORAL, STATUTORY OR OTHERWISE, RELATED TO THE INFORMATION INCLUDING BUT NOT LIMITED TO ANY IMPLIED WARRANTIES OF NON-INFRINGEMENT, MERCHANTABILITY, AND FITNESS FOR A PARTICULAR PURPOSE, OR WARRANTIES RELATED TO ITS CONDITION, QUALITY, OR PERFORMANCE.

IN NO EVENT WILL MICROCHIP BE LIABLE FOR ANY INDIRECT, SPECIAL, PUNITIVE, INCIDENTAL, OR CONSEQUENTIAL LOSS, DAMAGE, COST, OR EXPENSE OF ANY KIND WHATSOEVER RELATED TO THE INFORMATION OR ITS USE, HOWEVER CAUSED, EVEN IF MICROCHIP HAS BEEN ADVISED OF THE POSSIBILITY OR THE DAMAGES ARE FORESEEABLE. TO THE FULLEST EXTENT ALLOWED BY LAW, MICROCHIP'S TOTAL LIABILITY ON ALL CLAIMS IN ANY WAY RELATED TO THE INFORMATION OR ITS USE WILL NOT EXCEED THE AMOUNT OF FEES, IF ANY, THAT YOU HAVE PAID DIRECTLY TO MICROCHIP FOR THE INFORMATION.

Use of Microchip devices in life support and/or safety applications is entirely at the buyer's risk, and the buyer agrees to defend, indemnify and hold harmless Microchip from any and all damages, claims, suits, or expenses resulting from such use. No licenses are conveyed, implicitly or otherwise, under any Microchip intellectual property rights unless otherwise stated.

Trademarks

The Microchip name and logo, the Microchip logo, Adaptec, AnyRate, AVR, AVR logo, AVR Freaks, BesTime, BitCloud, CryptoMemory, CryptoRF, dsPIC, flexPWR, HELDO, IGLOO, JukeBlox, KeeLoq, Klear, LANCheck, LinkMD, maXStylus, maXTouch, MediaLB, megaAVR, Microsemi, Microsemi logo, MOST, MOST logo, MPLAB, OptoLyzer, PIC, picoPower, PICSTART, PIC32 logo, PolarFire, Prochip Designer, QTouch, SAM-BA, SenGenuity, SpyNIC, SST, SST Logo, SuperFlash, Symmetricom, SyncServer, Tachyon, TimeSource, tinyAVR, UNI/O, Vectron, and XMEGA are registered trademarks of Microchip Technology Incorporated in the U.S.A. and other countries.

AgileSwitch, APT, ClockWorks, The Embedded Control Solutions Company, EtherSynch, Flashtec, Hyper Speed Control, HyperLight Load, IntellIMOS, Libero, motorBench, mTouch, Powermite 3, Precision Edge, ProASIC, ProASIC Plus, ProASIC Plus logo, Quiet- Wire, SmartFusion, SyncWorld, Temux, TimeCesium, TimeHub, TimePictra, TimeProvider, TrueTime, WinPath, and ZL are registered trademarks of Microchip Technology Incorporated in the U.S.A.

Adjacent Key Suppression, AKS, Analog-for-the-Digital Age, Any Capacitor, AnyIn, AnyOut, Augmented Switching, BlueSky, BodyCom, CodeGuard, CryptoAuthentication, CryptoAutomotive, CryptoCompanion, CryptoController, dsPICDEM, dsPICDEM.net, Dynamic Average Matching, DAM, ECAN, Espresso T1S, EtherGREEN, GridTime, IdealBridge, In-Circuit Serial Programming, ICSP, INICnet, Intelligent Paralleling, Inter-Chip Connectivity, JitterBlocker, Knob-on-Display, maxCrypto, maxView, memBrain, Mindi, MiWi, MPASM, MPF, MPLAB Certified logo, MPLIB, MPLINK, MultiTRAK, NetDetach, NVM Express, NVMe, Omniscient Code Generation, PICDEM, PICDEM.net, PICKit, PICTail, PowerSmart, PureSilicon, QMatrix, REAL ICE, Ripple Blocker, RTAX, RTG4, SAM-ICE, Serial Quad I/O, simpleMAP, SimpliPHY, SmartBuffer, SmartHLS, SMART-I.S., storClad, SQL, SuperSwitcher, SuperSwitcher II, Switchtec, SynchroPHY, Total Endurance, TSHARC, USBCheck, VariSense, VectorBlox, VeriPHY, ViewSpan, WiperLock, XpressConnect, and ZENA are trademarks of Microchip Technology Incorporated in the U.S.A. and other countries.

SQTP is a service mark of Microchip Technology Incorporated in the U.S.A.

The Adaptec logo, Frequency on Demand, Silicon Storage Technology, Symmcom, and Trusted Time are registered trademarks of Microchip Technology Inc. in other countries.

GestIC is a registered trademark of Microchip Technology Germany II GmbH & Co. KG, a subsidiary of Microchip Technology Inc., in other countries.

All other trademarks mentioned herein are property of their respective companies.

© 2021, Microchip Technology Incorporated and its subsidiaries. All Rights Reserved.

ISBN: 978-1-5224-9309-9

Quality Management System

For information regarding Microchip's Quality Management Systems, please visit www.microchip.com/quality.

Worldwide Sales and Service

AMERICAS	ASIA/PACIFIC	ASIA/PACIFIC	EUROPE
<p>Corporate Office 2355 West Chandler Blvd. Chandler, AZ 85224-6199 Tel: 480-792-7200 Tel: 480-792-7277 Technical Support: www.microchip.com/support Web Address: www.microchip.com</p> <p>Atlanta Duluth, GA Tel: 678-957-9614 Fax: 678-957-1455</p> <p>Austin, TX Tel: 512-257-3370</p> <p>Boston Westborough, MA Tel: 774-760-0087 Fax: 774-760-0088</p> <p>Chicago Itasca, IL Tel: 630-285-0071 Fax: 630-285-0075</p> <p>Dallas Addison, TX Tel: 972-818-7423 Fax: 972-818-2924</p> <p>Detroit Novi, MI Tel: 248-848-4000</p> <p>Houston, TX Tel: 281-894-5983</p> <p>Indianapolis Noblesville, IN Tel: 317-773-8323 Fax: 317-773-5453 Tel: 317-536-2380</p> <p>Los Angeles Mission Viejo, CA Tel: 949-462-9523 Fax: 949-462-9608 Tel: 951-273-7800</p> <p>Raleigh, NC Tel: 919-844-7510</p> <p>New York, NY Tel: 631-435-6000</p> <p>San Jose, CA Tel: 408-735-9110 Tel: 408-436-4270</p> <p>Canada - Toronto Tel: 905-695-1980 Fax: 905-695-2078</p>	<p>Australia - Sydney Tel: 61-2-9868-6733</p> <p>China - Beijing Tel: 86-10-8569-7000</p> <p>China - Chengdu Tel: 86-28-8665-5511</p> <p>China - Chongqing Tel: 86-23-8980-9588</p> <p>China - Dongguan Tel: 86-769-8702-9880</p> <p>China - Guangzhou Tel: 86-20-8755-8029</p> <p>China - Hangzhou Tel: 86-571-8792-8115</p> <p>China - Hong Kong SAR Tel: 852-2943-5100</p> <p>China - Nanjing Tel: 86-25-8473-2460</p> <p>China - Qingdao Tel: 86-532-8502-7355</p> <p>China - Shanghai Tel: 86-21-3326-8000</p> <p>China - Shenyang Tel: 86-24-2334-2829</p> <p>China - Shenzhen Tel: 86-755-8864-2200</p> <p>China - Suzhou Tel: 86-186-6233-1526</p> <p>China - Wuhan Tel: 86-27-5980-5300</p> <p>China - Xian Tel: 86-29-8833-7252</p> <p>China - Xiamen Tel: 86-592-2388138</p> <p>China - Zhuhai Tel: 86-756-3210040</p>	<p>India - Bangalore Tel: 91-80-3090-4444</p> <p>India - New Delhi Tel: 91-11-4160-8631</p> <p>India - Pune Tel: 91-20-4121-0141</p> <p>Japan - Osaka Tel: 81-6-6152-7160</p> <p>Japan - Tokyo Tel: 81-3-6880-3770</p> <p>Korea - Daegu Tel: 82-53-744-4301</p> <p>Korea - Seoul Tel: 82-2-554-7200</p> <p>Malaysia - Kuala Lumpur Tel: 60-3-7651-7906</p> <p>Malaysia - Penang Tel: 60-4-227-8870</p> <p>Philippines - Manila Tel: 63-2-634-9065</p> <p>Singapore Tel: 65-6334-8870</p> <p>Taiwan - Hsin Chu Tel: 886-3-577-8366</p> <p>Taiwan - Kaohsiung Tel: 886-7-213-7830</p> <p>Taiwan - Taipei Tel: 886-2-2508-8600</p> <p>Thailand - Bangkok Tel: 66-2-694-1351</p> <p>Vietnam - Ho Chi Minh Tel: 84-28-5448-2100</p>	<p>Austria - Wels Tel: 43-7242-2244-39 Fax: 43-7242-2244-393</p> <p>Denmark - Copenhagen Tel: 45-4485-5910 Fax: 45-4485-2829</p> <p>Finland - Espoo Tel: 358-9-4520-820</p> <p>France - Paris Tel: 33-1-69-53-63-20 Fax: 33-1-69-30-90-79</p> <p>Germany - Garching Tel: 49-8931-9700</p> <p>Germany - Haan Tel: 49-2129-3766400</p> <p>Germany - Heilbronn Tel: 49-7131-72400</p> <p>Germany - Karlsruhe Tel: 49-721-625370</p> <p>Germany - Munich Tel: 49-89-627-144-0 Fax: 49-89-627-144-44</p> <p>Germany - Rosenheim Tel: 49-8031-354-560</p> <p>Israel - Ra'anana Tel: 972-9-744-7705</p> <p>Italy - Milan Tel: 39-0331-742611 Fax: 39-0331-466781</p> <p>Italy - Padova Tel: 39-049-7625286</p> <p>Netherlands - Drunen Tel: 31-416-690399 Fax: 31-416-690340</p> <p>Norway - Trondheim Tel: 47-72884388</p> <p>Poland - Warsaw Tel: 48-22-3325737</p> <p>Romania - Bucharest Tel: 40-21-407-87-50</p> <p>Spain - Madrid Tel: 34-91-708-08-90 Fax: 34-91-708-08-91</p> <p>Sweden - Gothenberg Tel: 46-31-704-60-40</p> <p>Sweden - Stockholm Tel: 46-8-5090-4654</p> <p>UK - Wokingham Tel: 44-118-921-5800 Fax: 44-118-921-5820</p>