



MICROCHIP

**EVB-PCI12000
Evaluation Kit
User's Guide**

Note the following details of the code protection feature on Microchip products:

- Microchip products meet the specifications contained in their particular Microchip Data Sheet.
- Microchip believes that its family of products is secure when used in the intended manner, within operating specifications, and under normal conditions.
- Microchip values and aggressively protects its intellectual property rights. Attempts to breach the code protection features of Microchip product is strictly prohibited and may violate the Digital Millennium Copyright Act.
- Neither Microchip nor any other semiconductor manufacturer can guarantee the security of its code. Code protection does not mean that we are guaranteeing the product is "unbreakable" Code protection is constantly evolving. Microchip is committed to continuously improving the code protection features of our products.

This publication and the information herein may be used only with Microchip products, including to design, test, and integrate Microchip products with your application. Use of this information in any other manner violates these terms. Information regarding device applications is provided only for your convenience and may be superseded by updates. It is your responsibility to ensure that your application meets with your specifications. Contact your local Microchip sales office for additional support or, obtain additional support at <https://www.microchip.com/en-us/support/design-help/client-support-services>.

THIS INFORMATION IS PROVIDED BY MICROCHIP "AS IS". MICROCHIP MAKES NO REPRESENTATIONS OR WARRANTIES OF ANY KIND WHETHER EXPRESS OR IMPLIED, WRITTEN OR ORAL, STATUTORY OR OTHERWISE, RELATED TO THE INFORMATION INCLUDING BUT NOT LIMITED TO ANY IMPLIED WARRANTIES OF NON-INFRINGEMENT, MERCHANTABILITY, AND FITNESS FOR A PARTICULAR PURPOSE, OR WARRANTIES RELATED TO ITS CONDITION, QUALITY, OR PERFORMANCE.

IN NO EVENT WILL MICROCHIP BE LIABLE FOR ANY INDIRECT, SPECIAL, PUNITIVE, INCIDENTAL, OR CONSEQUENTIAL LOSS, DAMAGE, COST, OR EXPENSE OF ANY KIND WHATSOEVER RELATED TO THE INFORMATION OR ITS USE, HOWEVER CAUSED, EVEN IF MICROCHIP HAS BEEN ADVISED OF THE POSSIBILITY OR THE DAMAGES ARE FORESEEABLE. TO THE FULLEST EXTENT ALLOWED BY LAW, MICROCHIP'S TOTAL LIABILITY ON ALL CLAIMS IN ANY WAY RELATED TO THE INFORMATION OR ITS USE WILL NOT EXCEED THE AMOUNT OF FEES, IF ANY, THAT YOU HAVE PAID DIRECTLY TO MICROCHIP FOR THE INFORMATION.

Use of Microchip devices in life support and/or safety applications is entirely at the buyer's risk, and the buyer agrees to defend, indemnify and hold harmless Microchip from any and all damages, claims, suits, or expenses resulting from such use. No licenses are conveyed, implicitly or otherwise, under any Microchip intellectual property rights unless otherwise stated.

Trademarks

The Microchip name and logo, the Microchip logo, Adaptec, AVR, AVR logo, AVR Freaks, BesTime, BitCloud, CryptoMemory, CryptoRF, dsPIC, flexPWR, HELDO, IGLoo, JukeBlox, KeeLoq, Klear, LANCheck, LinkMD, maXStylus, maXTouch, MediaLB, megaAVR, Microsemi, Microsemi logo, MOST, MOST logo, MPLAB, OptoLyzer, PIC, picoPower, PICSTART, PIC32 logo, PolarFire, Prochip Designer, QTouch, SAM-BA, SenGenuity, SpyNIC, SST Logo, SuperFlash, Symmetricom, SyncServer, Tachyon, TimeSource, tinyAVR, UNI/O, Vectron, and XMEGA are registered trademarks of Microchip Technology Incorporated in the U.S.A. and other countries.

AgileSwitch, ClockWorks, The Embedded Control Solutions Company, EtherSynch, Flashtec, Hyper Speed Control, HyperLight Load, Libero, motorBench, mTouch, Powermite 3, Precision Edge, ProASIC, ProASIC Plus, ProASIC Plus logo, Quiet-Wire, SmartFusion, SyncWorld, TimeCesium, TimeHub, TimePictra, TimeProvider, and ZL are registered trademarks of Microchip Technology Incorporated in the U.S.A.

Adjacent Key Suppression, AKS, Analog-for-the-Digital Age, Any Capacitor, AnyIn, AnyOut, Augmented Switching, BlueSky, BodyCom, Clockstudio, CodeGuard, CryptoAuthentication, CryptoAutomotive, CryptoCompanion, CryptoController, dsPICDEM, dsPICDEM.net, Dynamic Average Matching, DAM, ECAN, Espresso T1S, EtherGREEN, EyeOpen, GridTime, IdealBridge, IGaT, In-Circuit Serial Programming, ICSP, INICnet, Intelligent Paralleling, IntellIMOS,

Inter-Chip Connectivity, JitterBlocker, Knob-on-Display, MarginLink, maxCrypto, maxView, memBrain, Mindi, MiWi, MPASM, MPF, MPLAB Certified logo, MPLIB, MPLINK, mSiC, MultiTRAK, NetDetach, Omniscient Code Generation, PICDEM, PICDEM.net, PICkit, PICtail, Power MOS IV, Power MOS 7, PowerSmart, PureSilicon, QMatrix, REAL ICE, Ripple Blocker, RTAX, RTG4, SAM-ICE, Serial Quad I/O, simpleMAP, SimpliPHY, SmartBuffer, SmartHLS, SMART-I.S., storClad, SQI, SuperSwitcher, SuperSwitcher II, Switchtec, SynchroPHY, Total Endurance, Trusted Time, TSHARC, Turing, USBCheck, VariSense, VectorBlox, VeriPHY, ViewSpan, WiperLock, XpressConnect, and ZENA are trademarks of Microchip Technology Incorporated in the U.S.A. and other countries.

SQTP is a service mark of Microchip Technology Incorporated in the U.S.A.

The Adaptec logo, Frequency on Demand, Silicon Storage Technology, and Symmcom are registered trademarks of Microchip Technology Inc. in other countries.

GestIC is a registered trademark of Microchip Technology Germany II GmbH & Co. KG, a subsidiary of Microchip Technology Inc., in other countries.

All other trademarks mentioned herein are property of their respective companies.
© 2023, Microchip Technology Incorporated and its subsidiaries.

All Rights Reserved.

ISBN: 979-8-3371-0023-4

For information regarding Microchip's Quality Management Systems, please visit www.microchip.com/quality.

Table of Contents

Preface	5
Introduction.....	5
Document Layout	5
Conventions Used in this Guide	6
Warranty Registration.....	7
The Microchip Web Site	7
Development Systems Customer Change Notification Service	7
Customer Support	8
Document Revision History	8
Chapter 1. Overview	
1.1 EVB-PCI12000 Evaluation Kit Overview	9
1.2 Features	9
1.3 Block Diagram	10
1.4 References	10
1.5 Definitions/Acronyms	10
Chapter 2. Getting Started	
2.1 Introduction	11
2.2 Kit Content	11
2.3 Recommended Equipment	11
2.4 Quick Start	11
Chapter 3. Hardware Configuration	
3.1 Hardware Configuration Options	13
3.1.1 Power Input Options	13
3.1.2 Power Mode Select Switch	14
3.1.3 Board Reset	15
3.1.4 Jumper Settings and Defaults	15
3.1.5 Interface Connectors	19
3.1.6 LED Indicators on EVB-PCI12000	23
3.1.7 Test Points on EVB-PCI12000	23
Appendix A. Schematics	
A.1 Introduction	25
Appendix B. Bill of Materials	
B.1 Introduction	31
Appendix C. PCB Silk Screens	
C.1 Introduction	39
Worldwide Sales and Service	42

EVB-PCI12000 Evaluation Kit User's Guide

NOTES:

Preface

NOTICE TO CUSTOMERS

All documentation becomes dated, and this manual is no exception. Microchip tools and documentation are constantly evolving to meet customer needs, so some actual dialogs and/or tool descriptions may differ from those in this document. Please refer to our web site (www.microchip.com) to obtain the latest documentation available.

Documents are identified with a “DS” number. This number is located on the bottom of each page, in front of the page number. The numbering convention for the DS number is “DSXXXXXA”, where “XXXXX” is the document number and “A” is the revision level of the document.

For the most up-to-date information on development tools, see the MPLAB® IDE online help. Select the Help menu, and then Topics to open a list of available online help files.

INTRODUCTION

This chapter contains general information that will be useful to know before using the EVB-PCI12000 Evaluation Kit User's Guide. Items discussed in this chapter include:

- [Document Layout](#)
- [Conventions Used in this Guide](#)
- [Warranty Registration](#)
- [The Microchip Web Site](#)
- [Development Systems Customer Change Notification Service](#)
- [Customer Support](#)
- [Document Revision History](#)

DOCUMENT LAYOUT

This document describes how to use the EVB-PCI12000 Evaluation Kit as a demonstration platform optimized for portable applications. The manual layout is as follows:

- **Chapter 1. “Overview”** – This chapter shows a brief description of the EVB-PCI12000 Evaluation Kit.
- **Chapter 2. “Getting Started”** – This chapter provides information about set-up and operation of the EVB-PCI12000 Evaluation Kit.
- **Chapter 3. “Hardware Configuration”** – This chapter includes information about the hardware configuration of the EVB-PCI12000 Evaluation Kit.
- **Appendix A. “Schematics”** – This appendix shows the schematic drawings of the EVB-PCI12000 Evaluation Kit.
- **Appendix B. “Bill of Materials”** – This appendix details the EVB-PCI12000 Evaluation Kit's bill of materials.
- **Appendix C. “PCB Silk Screens”** – This chapter shows the silk screen images of the EVB-PCI12000 Evaluation Kit.

CONVENTIONS USED IN THIS GUIDE

This manual uses the following documentation conventions:

DOCUMENTATION CONVENTIONS

Description	Represents	Examples
Arial font:		
Italic characters	Referenced books	<i>MPLAB® IDE User's Guide</i>
	Emphasized text	...is the <i>only</i> compiler...
Initial caps	A window	the Output window
	A dialog	the Settings dialog
	A menu selection	select Enable Programmer
Quotes	A field name in a window or dialog	"Save project before build"
Underlined, italic text with right angle bracket	A menu path	<u><i>File>Save</i></u>
Bold characters	A dialog button	Click OK
	A tab	Click the Power tab
N'Rnnnn	A number in verilog format, where N is the total number of digits, R is the radix and n is a digit.	4'b0010, 2'hF1
Text in angle brackets < >	A key on the keyboard	Press <Enter>, <F1>
Courier New font:		
Plain Courier New	Sample source code	#define START
	Filenames	autoexec.bat
	File paths	c:\mcc18\h
	Keywords	_asm, _endasm, static
	Command-line options	-Opa+, -Opa-
	Bit values	0, 1
	Constants	0xFF, 'A'
Italic Courier New	A variable argument	<i>file.o</i> , where <i>file</i> can be any valid filename
Square brackets []	Optional arguments	mcc18 [options] file [options]
Curly brackets and pipe character: { }	Choice of mutually exclusive arguments; an OR selection	errorlevel {0 1}
Ellipses...	Replaces repeated text	var_name [, var_name...]
	Represents code supplied by user	void main (void) { ... }

WARRANTY REGISTRATION

Please complete the enclosed Warranty Registration Card and mail it promptly. Sending the Warranty Registration Card entitles users to receive new product updates. Interim software releases are available at the Microchip web site.

THE MICROCHIP WEB SITE

Microchip provides online support via our web site at www.microchip.com. This web site is used as a means to make files and information easily available to customers. Accessible by using your favorite Internet browser, the web site contains the following information:

- **Product Support** – Data sheets and errata, application notes and sample programs, design resources, user's guides and hardware support documents, latest software releases and archived software
- **General Technical Support** – Frequently Asked Questions (FAQs), technical support requests, online discussion groups, Microchip consultant program member listing
- **Business of Microchip** – Product selector and ordering guides, latest Microchip press releases, listing of seminars and events, listings of Microchip sales offices, distributors and factory representatives

DEVELOPMENT SYSTEMS CUSTOMER CHANGE NOTIFICATION SERVICE

Microchip's customer notification service helps keep customers current on Microchip products. Subscribers will receive e-mail notification whenever there are changes, updates, revisions or errata related to a specified product family or development tool of interest.

To register, access the Microchip web site at www.microchip.com, click on Customer Change Notification and follow the registration instructions.

The Development Systems product group categories are:

- **Compilers** – The latest information on Microchip C compilers, assemblers, linkers and other language tools. These include all MPLABCC compilers; all MPLAB assemblers (including MPASM™ assembler); all MPLAB linkers (including MPLINK™ object linker); and all MPLAB librarians (including MPLIB™ object librarian).
- **Emulators** – The latest information on Microchip in-circuit emulators. This includes the MPLAB® REAL ICE™ and MPLAB ICE 2000 in-circuit emulators.
- **In-Circuit Debuggers** – The latest information on the Microchip in-circuit debuggers. This includes MPLAB ICD 3 in-circuit debuggers and PICKit™ 3 debug express.
- **MPLAB IDE** – The latest information on Microchip MPLAB IDE, the Windows® Integrated Development Environment for development systems tools. This list is focused on the MPLAB IDE, MPLAB IDE Project Manager, MPLAB Editor and MPLAB SIM simulator, as well as general editing and debugging features.
- **Programmiers** – The latest information on Microchip programmers. These include production programmers such as MPLAB REAL ICE in-circuit emulator, MPLAB ICD 3 in-circuit debugger and MPLAB PM3 device programmers. Also included are non-production development programmers such as PICSTART® Plus and PICKit 2 and 3.

CUSTOMER SUPPORT

Users of Microchip products can receive assistance through several channels:

- Distributor or Representative
- Local Sales Office
- Field Application Engineer (FAE)
- Technical Support

Customers should contact their distributor, representative or field application engineer (FAE) for support. Local sales offices are also available to help customers. A listing of sales offices and locations is included in the back of this document.

Technical support is available through the web site at:

<http://www.microchip.com/support>

DOCUMENT REVISION HISTORY

Revisions	Section/Figure/Entry	Correction
DS50003597B (11-11-24)	Section 2.2 "Kit Content"	Removed "PCI retention clip (installed)" from the list.
	All	Removed the "Preliminary - NDA" marker.
DS50003597A (11-24-23)	Initial release	

Chapter 1. Overview

1.1 EVB-PCI12000 EVALUATION KIT OVERVIEW

The EVB-PCI12000 is a demonstration and evaluation platform that provides the necessary requirements and interface options for evaluating the PCI12000, a single-chip PCIe switch with programmable I/O options (I²C/SPI/UART/GPIO), on a six-layer RoHS-compliant Printed Circuit Board (PCB). This kit allows the user to gain an understanding of the product and accelerate the integration of the PCI12000 into the user's design.

The evaluation platform includes two (2) downstream PCIe Gen 3 switch ports (1 lane * 8 GT/s) and implements one (1) channel of RS-232/485 connectivity.

The EVB-PCI12000 demonstrates its PCIe and I²C/SPI/UART/GPIO driver compatibility in Linux[®] and Microsoft[®] Windows[®] 10.

See [Section 1.2 “Features”](#) for more information.

Note: 12V/48 Watt supply is required for maximal use of all interfaces of this evaluation hardware.
--

1.2 FEATURES

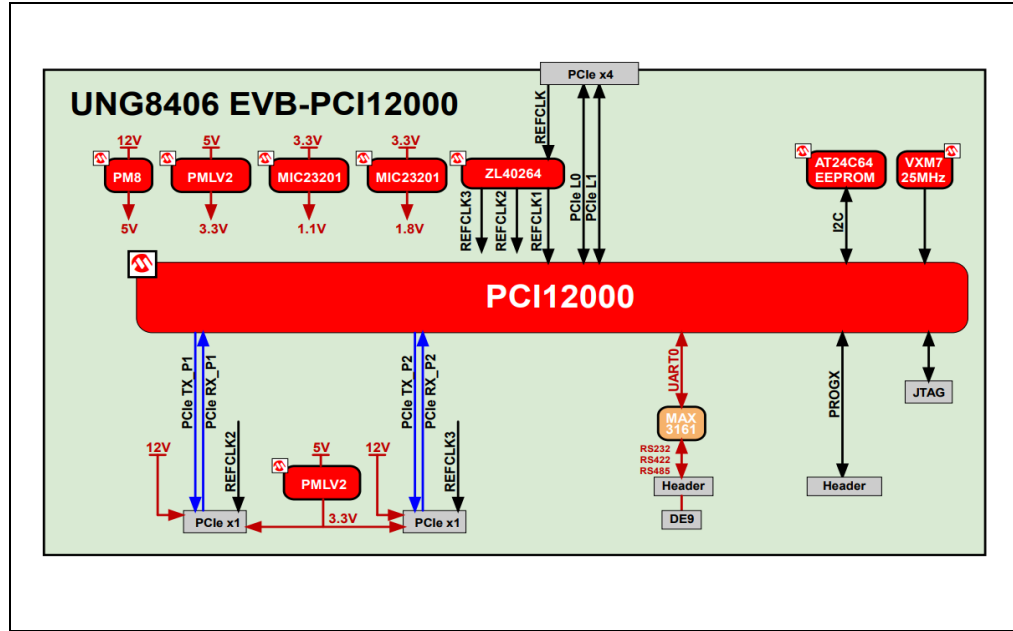
The EVB-PCI12000 Evaluation Kit has the following features:

- The EVB-PCI12000 in a 72-pin single-row QFN (VQFN) RoHS-compliant package.
- Two downstream PCIe Gen 3 (1 lane * 8GT/s) ports on PCIe x4 slot connectors
- One channel of RS-232/485
- On-board I²C serial EEPROM for EVB system configuration and function customization
- One optional I²C or SPI target configuration bus
- Operates from a single voltage (+12.0 V, regulated) external power supply
- On-board 25 MHz crystal
- Single on-board +5 V, regulator
- Single on-board +3.3 V, regulator
- Single on-board +1.1 V, regulator
- USB Port Power LED indicators
- Reset LED indicator
- Regulator LED indicators for 5V, 3.3V, and 1.1V outputs
- Three 12V power supply connection options:
 1. Barrel connector
 2. 4-pin ATX peripheral power connector
 3. 2-pin screw terminal block for use with external 12V bench supply

1.3 BLOCK DIAGRAM

Figure 1-1 shows the block diagram of the EVB-PCI12000.

FIGURE 1-1: EVB-PCI12000 BLOCK DIAGRAM



1.4 REFERENCES

Concepts and materials available in the following documents may be helpful when reading this document. Visit www.microchip.com for the latest documentation.

- *PCI12000 3-Port PCIe Switch with Integrated Programmable I/O Data Sheet*
- *AN5190 PCI1xxxx Windows Driver Installation Guide*

1.5 DEFINITIONS/ACRONYMS

Table 1-1 lists the terms and acronyms used in this document:

TABLE 1-1: ACRONYMS AND DEFINITIONS

Acronym	Definition
DFP	Downstream Facing Port
EVB	Evaluation Board
OTP	One Time Programmable memory

Chapter 2. Getting Started

2.1 INTRODUCTION

The Microchip EVB-PCI12000 is designed for flexible configuration solutions. It can be configured via external EEPROM (the EVB-PCI12000 configuration resides in EEPROM), internal One-Time-Programmable (OTP) memory, and/or external I²C/SPI controller (optional).

To modify the functionality of the EVB-PCI12000, Microchip provides a software programming tool, MPLAB[®] Connect Configurator, for configuring PCI12000 functions or registers.

For additional information on the MPLABCC programming tool, refer to Software Libraries at www.microchip.com.

Note: Older SPI documentation uses the terminologies “master” and “slave.” The equivalent Microchip terminologies used in this document are “controller” and “target,” respectively.

2.2 KIT CONTENT

The EVB-PCI12000 Evaluation Kit includes the basic equipment necessary for evaluation: The item included in the kit is:

1. EVB-PCI12000 Evaluation Board

2.3 RECOMMENDED EQUIPMENT

The following are the recommended hardware for the EVB-PCI12000 Evaluation Kit:

- **12V DC Power Supply:** The EVB-PCI12000 includes a 5.5x2.5x12 mm DC barrel jack, which is compatible with AC/DC adapters, including the Cincon TRH70A120-12E01-Level-VI.
- **PCIe Riser Cable:** This evaluation board is best used on an electronics bench-top for ease of access to its interfaces and headers. It is recommended to attach a PCIe riser cable between the PC motherboard add-in-card slot and the EVB-PCI12000 PCIe edge connector to provide enough distance from desktop PC chassis:
 - 0.25m cable: Samtec PCIEC-064-0250-EC-EM-P-85
 - 0.5m cable: Samtec PCIEC-064-0500-EC-EM-P-85

2.4 QUICK START

Perform the following steps to quickly start using the board:

1. Ensure that your Host PC is powered OFF before proceeding.
2. Configure jumpers according to default settings described in [Section 3.1.4 “Jumper Settings and Defaults”](#).
3. Connect the recommended PCIe riser cable from P1, to the PCIe card slot in

EVB-PCI12000 Evaluation Kit User's Guide

Host PC.

4. Connect +12 VDC power supply to one of the three (3) power input connectors: J15, J27, or J30.
5. Enable the +12 VDC power supply output.
6. Set the Power mode select switch SW1 into position [1-2] for PCIe-connected mode.
7. Power on the Host PC.

Note: With Power Mode Select Switch SW1 in position [1-2], the EVB-PCI12000 becomes powered, in sync with Host PC.

8. If not already installed, install the following drivers for your OS (See *AN5190 PCI1xxxx Windows Driver Installation Guide*.): Microchip PCI12000 GPIO/I²C/SPI/UART peripheral drivers.
9. Verify complete EVB-PCI12000 PCIe function enumeration by checking lspci (or equivalent) command output and confirming if the Vendor/Device IDs combinations in [Table 2-1](#) are present.

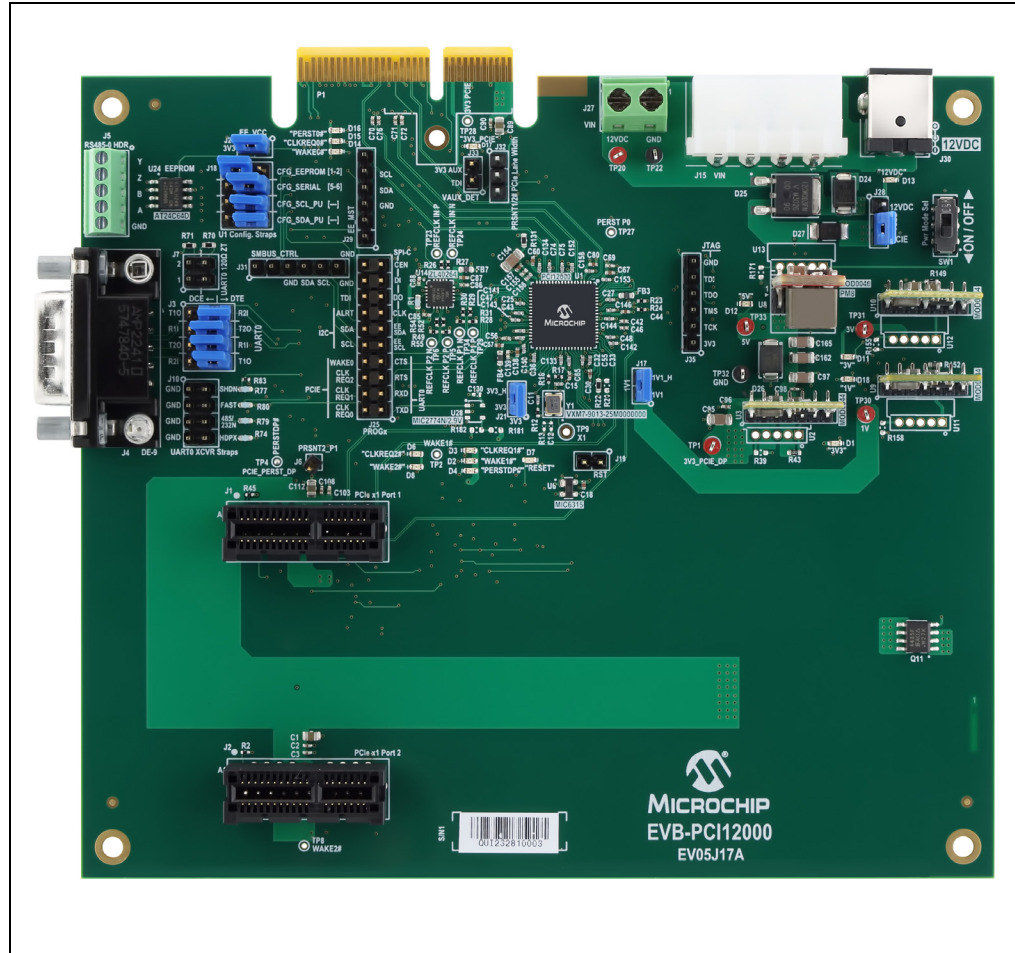
TABLE 2-1: PCI12000 SUBSYSTEM VENDOR (VID) AND DEVICE (DID) IDENTIFIERS

Endpoint	Vendor ID(Hex) : Device ID (Hex)
I ² C Controller	0x1055:0xA003
SPI Controller	0x1055:0xA004
GPIO/OTP/EEPROM Multifunction Module	0x1055:0xA005
PCIe Switch Ports	0x1055:[0xA008-0xA00C]

Chapter 3. Hardware Configuration

3.1 HARDWARE CONFIGURATION OPTIONS

FIGURE 3-1: EVB-PCI12000 REV B (TOP-SIDE)



3.1.1 Power Input Options

The EVB-PCI12000 is intended to be powered from one of three (3) external +12 VDC power supply connections:

1. J15 – 4-pin ATX Peripheral Power connector
2. J30 – AC/DC barrel jack
3. J27 – 2-pin screw terminal

Note: Connect and enable one (1) power supply input at a time only.

3.1.2 Power Mode Select Switch

The EVB-PCI12000 has a Power Mode Select switch SW1 with two (2) modes, which must be chosen prior to applying power to the board. See [Table 3-1](#).

TABLE 3-1: POWER MODE SELECT OPTIONS

SW1 Position	Power Mode
1-2	PCIe-connected mode
2-3	PCIe-disconnected mode

3.1.2.1 PCIE-CONNECTED MODE

The EVB-PCI12000 on-board voltage regulators will be automatically switched on in synchronization with when the +12 VDC power is enabled in the Host PC's PCIe add-in-card slot.

Perform the following steps to use this power mode:

1. Set SW1 to position [1-2].
2. Populate J28 to position [2-3].
3. Ensure that the Host PC is powered OFF, then connect EVB-PCI12000's P1 connector to the Host PCIe slot.
4. Connect external +12 VDC power supply (powered-OFF) to one of the three power input options.
5. Enable external +12 VDC power supply output and observe whether LED D13 is illuminated. This external power supply will remain isolated from EVB-PCI12000 main circuitry until the Host PC PCIe power is enabled. Now the EVB-PCI12000 shall become fully powered by the external power supply in synchronization with the Host PC's PCIe power being enabled.

Note: This mode is intended to allow the EVB-PCI12000 to be entirely self-powered for the highest power integrity and compatibility with most host systems and PCIe riser cables.

3.1.2.2 PCIE-DISCONNECTED MODE

This mode can be selected when the EVB-PCI12000 is used independently or without a PCIe connection (e.g. for I²C EEPROM programming).

The evaluation board power can be manually controlled via SW1 and/or the external +12 VDC power supply.

Perform the following steps to use this power mode:

1. Ensure that there is no PCIe connection to EVB-PCI12000's P1 connector.
2. Set SW1 to position [2-3].
3. Populate J28 to position [1-2].
4. Connect external +12 VDC power supply (powered OFF) to one of the three power input options.
5. Enable external +12 VDC power supply output and observe whether LED D13 is illuminated. The EVB-PCI12000 shall become fully powered by the external power supply.

Note: In this mode, the evaluation board power can be controlled by either the +12 VDC power supply's enable control or by switching SW1 back into position [1-2].

3.1.3 Board Reset

The evaluation board does not include a momentary Reset switch. Instead, it includes a Reset jumper.

Note: Resetting of EVB-PCI12000 during the runtime operation of the evaluation board when connected to a Host PC's PCIe slot is not supported. Therefore, all intentional Reset actions shall occur via installation of jumper J19.

When the EVB-PCI12000 is reset via J19 during runtime operation, the PCIe-dependent functions of the PCI12000 are not expected to function normally afterwards.

Reset of EVB-PCI12000 shall normally occur prior to PCIe enumeration, as the EVB-PCI12000's on-board 3.3V voltage regulator output becomes stable.

3.1.4 Jumper Settings and Defaults

This section describes the functionality of the multiple jumpers included in EVB-PCI12000. The jumper graphics indicate the intended default positions of the jumpers as they would appear with the board oriented with the Microchip logo upright from the user's perspective.

Note: Two-pin jumper headers are not graphically shown in [Table 3-2](#).

TABLE 3-2: JUMPER SETTINGS AND DEFAULTS

Reference	Jumper Function	Default Position	Description
J19	Board Reset	Open [1-2]	Install [1-2] to assert Reset for the PCI12000 and MAX3161 RS-232/485 transceivers. Open [1-2] to deassert Reset for PCI12000 and MAX3161 RS-232/485 transceivers.
J21	PCI12000 3.3V Power Measurement	Install [1-2]	Install [1-2] to connect 3.3V power (3V3_BRD) to the PCI12000 ASIC 3.3V power pins (3V3_ASIC). Open [1-2] to connect an ammeter across the jumper pins and measure the PCI12000 ASIC 3.3V power consumption.
J17	PCI12000 1.1V Power Measurement	Install [1-2]	Install [1-2] to connect 1.1V power (1V1_BRD) to the PCI12000 ASIC 1.1V power pins (1V1_ASIC). Open [1-2] to connect an ammeter across the jumper pins and measure the PCI12000 ASIC 1.1V power consumption.

Hardware Configuration

TABLE 3-2: JUMPER SETTINGS AND DEFAULTS (CONTINUED)

Reference	Jumper Function	Default Position	Description
J18	PCI12000 Configuration Straps	<p>Install [1-2] [5-6]</p> <p>Open [7-8-9] [10-11-12]</p>	<p>Note that with the default jumper positions, PCI12000 will load its configuration from EEPROM.</p> <p>Install [1-2] to assert PCI12000 CONFIG_EEPROM strap and allow I²C EEPROM configuration to be loaded.</p> <p>Install [2-3] to deassert PCI12000 CONFIG_EEPROM strap and prevent I²C EEPROM configuration from being loaded.</p> <p>Install [4-5] to assert PCI12000 CONFIG_SERIAL strap and allow configuration via either the SMBus or SPI target interface.</p> <p>Note that when jumper [4-5] is installed, PCI12000 will enable its SPI Target bus when the SMBUS_TGT_SCL/SPI_TGT_CLK and SMBUS_TGT_SDA/SPI_TGT_SDO pins are both detected as logic LOW upon exiting Reset state. Otherwise, when those pins are detected as logic HIGH upon exiting Reset state, PCI12000 will enable its SMBus target interface.</p> <p>Install [5-6] to de-assert PCI12000 CONFIG_SERIAL strap and prevent configuration via either the SMBus or SPI target interface.</p> <p>To enable PCI12000 configuration via SPI interface:</p> <p>Install [8-9] and [11-12] to connect 100 kΩ pull-downs to the PCI12000 SMBUS_TGT_SCL and SMBUS_TGT_SDA pins, respectively.</p> <p>Note that when jumpers [4-5], [8-9], and [11-12] are installed each, the PCI12000 will await configuration from the SPI target interface.</p> <p>To enable PCI12000 configuration via SMBus interface:</p> <p>Install [7-8] and [10-11] to connect 1 kΩ pull-ups to the PCI12000 SMBUS_TGT_SCL and SMBUS_TGT_SDA pins, respectively.</p> <p>Note that when jumpers [4-5], [7-8], and [10-11] are installed each, the PCI12000 will await configuration from SMBus target interface.</p>
J26	I ² C EEPROM VCC Power Enable	<p>Install [1-2]</p>	<p>Install [1-2] to connect 3.3V power to the I²C EEPROM device.</p> <p>Open [1-2] to disconnect 3.3V power to the I²C EEPROM device.</p>

TABLE 3-2: JUMPER SETTINGS AND DEFAULTS (CONTINUED)

Reference	Jumper Function	Default Position	Description
J32	PCIe PRSNT# Lane Width Selection	Install [1-2]	<p>Install [1-2] to identify the EVB-PCI12000 as a 2-lane/x2 add-in-card.</p> <p>Install [2-3] in to identify the EVB-PCI12000 as a 1-lane/x1 add-in-card.</p> <p>Note that leaving this EVB jumper position open may cause host system not to detect the presence of the EVB-PCI12000. It is recommended to always keep jumper installed in J32 into one of its positions.</p>
J33	PCIe VAUX_DET	Install [1-2]	<p>Install [1-2] to allow PCI12000 to detect PCIe 3.3 Vaux presence (e.g. for implementing a PCIe Warm Reset capability or supporting PME from PCIe D3cold state)</p> <p>Open [1-2] to decline support for PME from PCIe D3cold state.</p>
J3	UART0 DTE/DCE Mode Selection	Install [2-3] [5-6] [8-9] [11-12]	<p>This jumper set is for rerouting of UART signals to the appropriate DE-9 connector pins for either a DTE (Data Terminal Equipment) or DCE (Data Communications Equipment) implementation.</p> <p>The default jumper settings are for a "DTE" implementation.</p> <p>See schematic for explicit details on signal routing for the two (2) jumper options.</p> <p>This jumper set shall be configured only in one of the following ways:</p> <ul style="list-style-type: none"> • DCE implementation by installing [1-2], [4-5], [7-8], and [10-11] • DTE implementation by installing [2-3], [5-6], [8-9], and [11-12]

TABLE 3-2: JUMPER SETTINGS AND DEFAULTS (CONTINUED)

Reference	Jumper Function	Default Position	Description
J10	UART0 Transceiver Configuration	Open [1-2] [3-4] [7-8] Install [5-6]	<p>This jumper set is for the pin strap configuration of Analog Devices MAX3161 RS-232/485 transceiver.</p> <p>Install [1-2] to force MAX3161 into SHDN state.</p> <p>Install [3-4] to configure MAX3161 into FAST mode; disables slew rate limiting.</p> <p>Install [5-6] to configure MAX3161 into RS-232 mode.</p> <p>Install [7-8] to configure MAX3161 into Half-duplex mode.</p> <p>Open [1-2] to force MAX3161 into normal operational state.</p> <p>Open [3-4] to configure MAX3161 into normal mode; enables slew rate limiting.</p> <p>Open [5-6] to configure MAX3161 into RS-485 mode.</p> <p>Open [7-8] to configure MAX3161 into Full-duplex mode.</p> <p>Consult the Analog Devices <i>MAX3161 Data Sheet</i> for complete details regarding these settings.</p>
J7	UART0 RS-485 Terminations	Open [1-2] [3-4]	<p>This jumper set is to connect discrete 120Ω terminations onto the RS-485 bus.</p> <p>Install [1-2] to connect 120Ω termination between the "A" and "B" RS-485 bus signals.</p> <p>Install [1-2] to connect 120Ω termination onto the "Y" and "Z" RS-485 bus signals.</p> <p>Open [1-2] to disconnect 120Ω termination between the "A" and "B" RS-485 bus signals.</p> <p>Open [1-2] to disconnect 120Ω termination onto the "Y" and "Z" RS-485 bus signals.</p>

3.1.5 Interface Connectors

3.1.5.1 P1 – PCIE UPSTREAM (MALE EDGE CONNECTOR)

The "upstream" connection towards the PCIe Root Complex is implemented as a standard 4-lane/x4 PCIe add-in-card male edge connector (64 positions).

Note: The upstream P1 connector is a 4-lane/x4 (64 positions) connector, but PCI12000 only uses two (2) PCIe lanes

The design of EVB-PCI12000 is intended to prioritize hands-on or board-on-benchtop use and may not be mechanically compatible with all PCIe host systems. Therefore, a 0.25m to 0.5m PCIe riser cable is strongly recommended to be connected between connector P1 and the upstream platform's PCIe add-in-card slot.

The upstream platform's 12V and 3.3V power rails are routed to the EVB-PCI12000 via this P1 connector. However, EVB-PCI12000 is designed not to substantially load these power rails as it includes options for external 12V power supplies to become “self-powered”.

Note: The “self-powered” capability of the EVB-PCI12000 is meant to accommodate PCIe->M.2 adapters where 12V is not available.

Optional JTAG connectivity to PCI12000 is available via P1, when the following 0Ω resistors are installed:

- R163 – JTAG TCK
- R169 – JTAG TDI
- R167 – JTAG TDO
- R165 – JTAG TMS

3.1.5.2 J1 – PCIe DOWNSTREAM (FEMALE ADD-IN-CARD SLOT) PORT 1

The “downstream” Port 1 connection towards an external PCIe device is implemented as a standard 1-lane/x1 PCIe add-in-card female receptacle (36 positions). PCIe Hot Plug is not implemented on this PCIe Downstream connector.

Both the PCIe 3.3V and 3.3 Vaux power pins are sourced from the EVB-PCI12000 3V3_BRD regulator.

3.1.5.3 J2 – PCIe DOWNSTREAM (FEMALE ADD-IN-CARD SLOT) PORT 2

The “downstream” Port 2 connection toward an external PCIe device is implemented as a standard 1-lane/x1 PCIe add-in-card female receptacle (36 positions).

PCIe Hot Plug is not implemented on this PCIe Downstream connector.

Both the PCIe 3.3V and 3.3 Vaux power pins are sourced from the EVB-PCI12000 3V3_BRD regulator.

3.1.5.4 J4 – UART0 RS-232 DE-9 CONNECTOR

This connector is for the RS-232 mode of connectivity associated with U19 MAX3161 RS-232/485 transceiver.

To use this DE-9 connector for RS-232 connectivity, ensure that the corresponding configuration jumpers are set appropriately:

- J3 must have jumpers installed into either the DTE, or DCE positions. See J3 detailed description in the Jumpers section of this guide.
- J10 must have jumper installed in position [5-6] to configure MAX3161 into RS-232 mode.

3.1.5.5 J5 – UART0 RS-485 HEADER

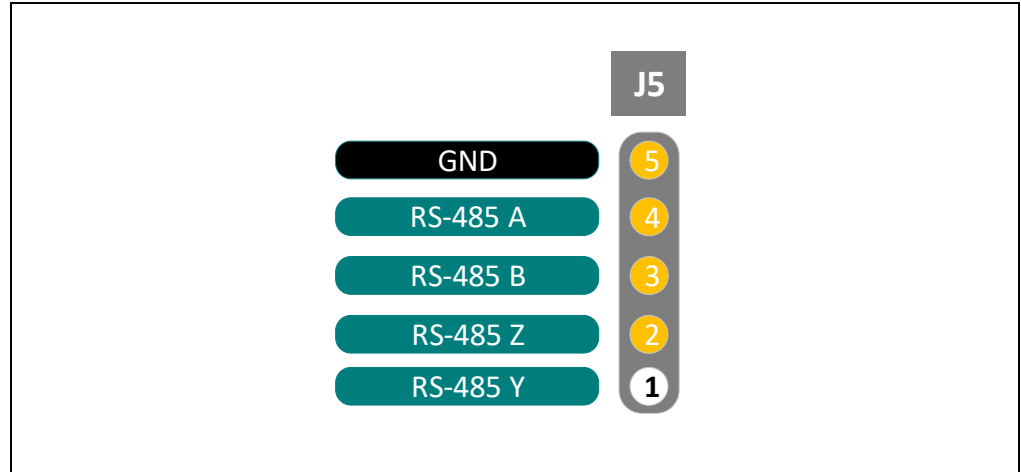
This header is for the RS-485 mode of connectivity associated with U19 MAX3161 RS-232/485 transceiver.

To use this header for RS-485 connectivity, ensure that the corresponding configuration jumpers are set appropriately:

- J10 must be open in position [5-6] to configure MAX3161 into RS-485 mode.
- J7 must be jumpered according to the RS-485 bus topology's requirements.

Figure 3-2 shows the J5 the signal pinout.

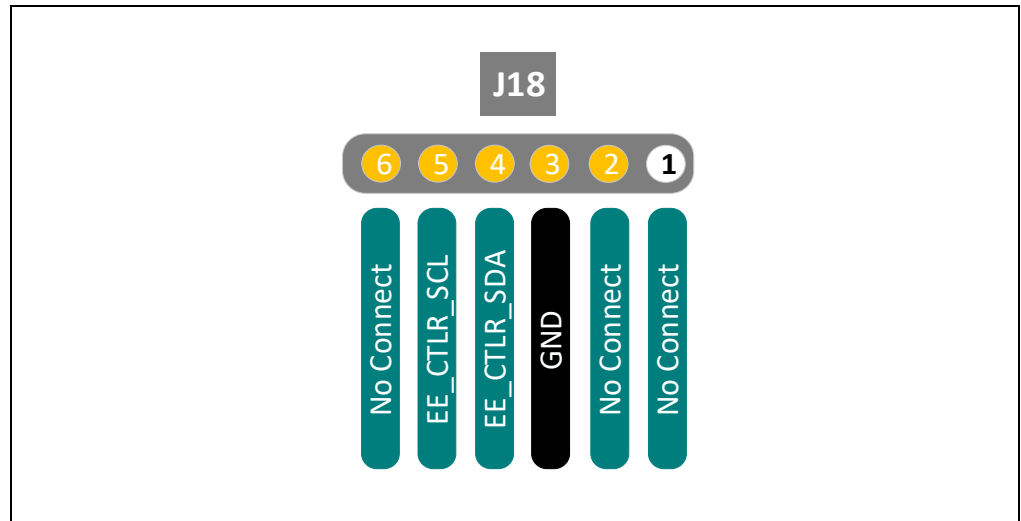
FIGURE 3-2: J5 SIGNAL PINOUT



3.1.5.6 J29 – I²C/SMBUS EEPROM CONTROLLER (PICKIT™ SERIAL)

This PICKIT™ Serial-compatible connector provides access to the I²C/SMBus EEPROM Controller bus of PCI12000. This bus will only be enabled when J18 PCI12000 Configuration Straps are configured to assert the CONFIG_EEPROM setting. (See J18 in [Section 3.1.4 “Jumper Settings and Defaults”](#).) Refer to [Figure 3-3](#).

FIGURE 3-3: J18 SIGNAL PINOUT

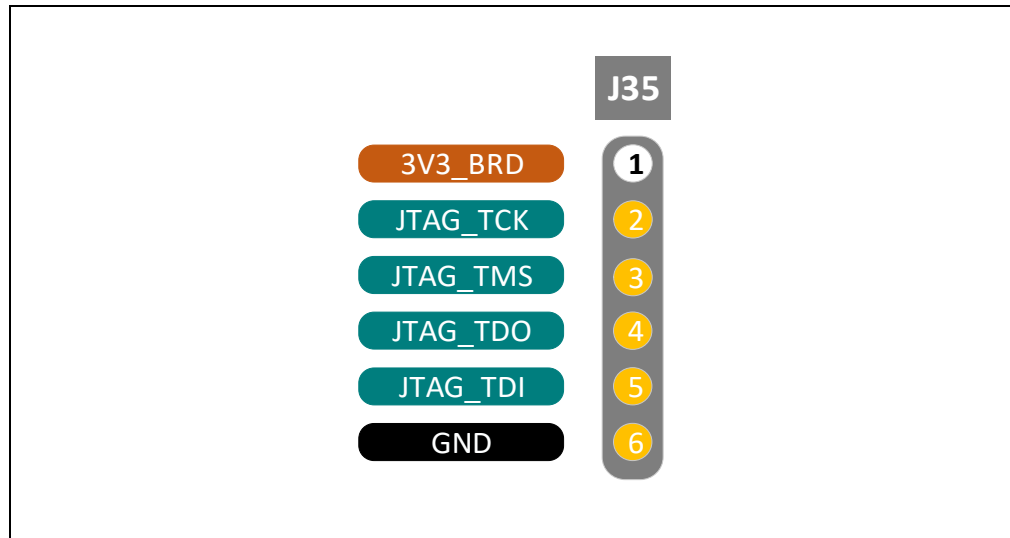


3.1.5.7 J35 – JTAG

The PCI12000 JTAG TAP interface becomes enabled only when PCI12000 is powered-on into Test mode by installing R21, depopulating R22, and resetting the evaluation board.

An optional 1x6 header position is provided in order to fly-wire into any JTAG adapter of choice. See [Figure 3-4](#).

FIGURE 3-4: J35 SIGNAL PINOUT



3.1.5.8 J25 – MULTI-FUNCTION HEADER

This header provides access to the majority of the communication specific signals used on EVB-PCI12000. Each pin is labeled in silkscreen adjacent to its probe pin. See [Table 3-3](#).

TABLE 3-3: PINOUT OF J25 MULTI-FUNCTION HEADER

Pin #	Signal
Pin 1	UART0 TXD
Pin 2	PCIE CLKREQ0
Pin 3	UART0 RXD
Pin 4	PCIE CLKREQ1
Pin 5	UART0 RTS
Pin 6	PCIE CLKREQ2
Pin 7	UART0 CTS
Pin 8	PCIE WAKE0
Pin 9	EE SCL
Pin 10	I2C SCL
Pin 11	EE SDA
Pin 12	I2C SDA
Pin 13	SPI CTRL CLK
Pin 14	I2C ALERT
Pin 15	SPI CTRL DO
Pin 16	JTAG TDI
Pin 17	SPI CTRL DI
Pin 18	GND
Pin 19	SPI CTRL CEN
Pin 20	GND

3.1.6 LED Indicators on EVB-PCI12000

Table 3-4 describes the LED indicators included in the EVB-PCI12000.

TABLE 3-4: LED INDICATOR DESCRIPTIONS

Reference	Signal Name	Description
D7	RESET#	Lit when PCI12000 Reset pin is asserted.
D13	12VIN_SW	Lit when there is voltage present upon one of the 12V input power connectors.
D12	5V_BRD	Lit when the on-board 5V regulator is outputting voltage.
D11	3V3_BRD	Lit when the on-board 3.3V regulator is outputting voltage.
D18	1V1_BRD	Lit when the on-board 1.1V regulator is outputting voltage.
D17	3V3_PCIE	Lit when the upstream PCIe host connection (at P1) is sourcing 3.3V power for EVB-PCI12000.
D16	PERST0#	Lit when the upstream PCIe host connection (at P1) has asserted PERST#.
D15	CLKREQ0#	Lit when PCI12000 has asserted CLKREQ# for its upstream PCIe connection.
D14	WAKE0#	Lit when PCI12000 has asserted WAKE# for its upstream PCIe connection.
D4	PERST1# PERST2#	Lit when either PERST#0 or RESET# are asserted.
D3	CLKREQ1#	Lit when external downstream PCIe device (at J1) has asserted its CLKREQ# signal (ready to receive PCIe REFCLK).
D2	WAKE1#	Lit when external downstream PCIe device (at J1) has signaled a wake event.
D6	CLKREQ2#	Lit when external downstream PCIe device (at J2) has asserted its CLKREQ# signal (ready to receive PCIe REFCLK).
D8	WAKE2#	Lit when external downstream PCIe device (at J2) has signaled a wake event.

3.1.7 Test Points on EVB-PCI12000

Table 3-5 describes the test points available on EVB-PCI12000.

TABLE 3-5: EVB-PCI12000 TEST POINTS

Reference	Signal Name	Remarks
TP20	12VIN	At the power-OR node
TP33	5V_BRD	—
TP31	3V3_BRD	—
TP30	1V1_BRD	—
TP28	3V3_PCIE	—
TP23	PCIE_REFCLK_IN_P	PCIe REFCLK output from clock buffer U14, which inputs to PCI12000 (differential)
TP24	PCIE_REFCLK_IN_N	PCIe REFCLK output from clock buffer U14, which inputs to PCI12000 (differential)
TP29	PCIE_REF- CLK_P1_P	PCIe REFCLK output from clock buffer U14, which inputs to external PCIe device at J1 (differential)
TP34	PCIE_REF- CLK_P1_N	PCIe REFCLK output from clock buffer U14, which inputs to external PCIe device at J1 (differential)

TABLE 3-5: EVB-PCI12000 TEST POINTS (CONTINUED)

Reference	Signal Name	Remarks
TP5	PCIE_REF-CLK_P2_P	PCIe REFCLK output from clock buffer U14, which inputs to external PCIe device at J2 (differential)
TP6	PCIE_REF-CLK_P2_N	PCIe REFCLK output from clock buffer U14, which inputs to external PCIe device at J2 (differential)
TP32	GND	Ground reference near to U3
TP22	GND	Ground reference near to J27

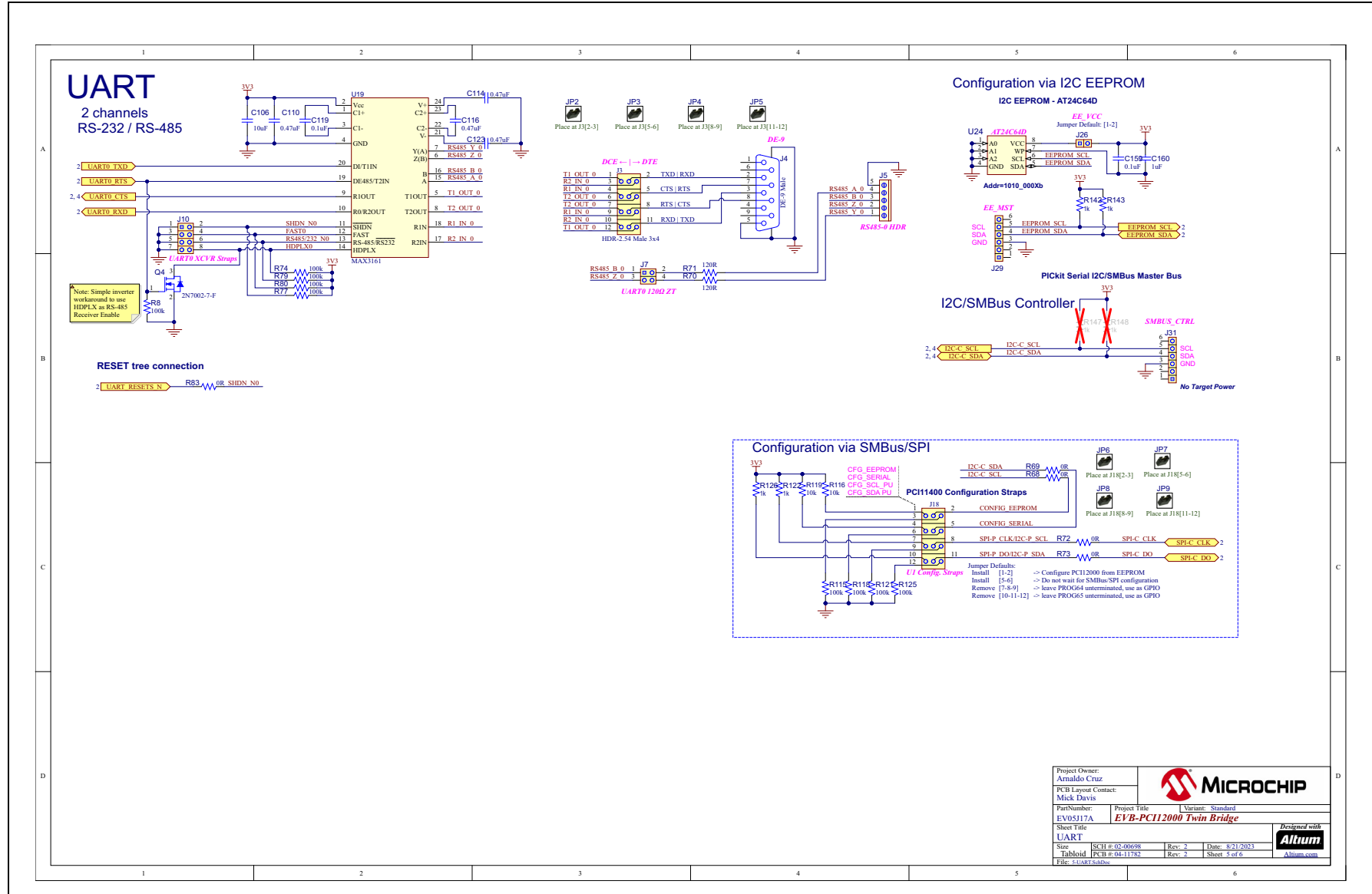


Appendix A. Schematics

A.1 INTRODUCTION

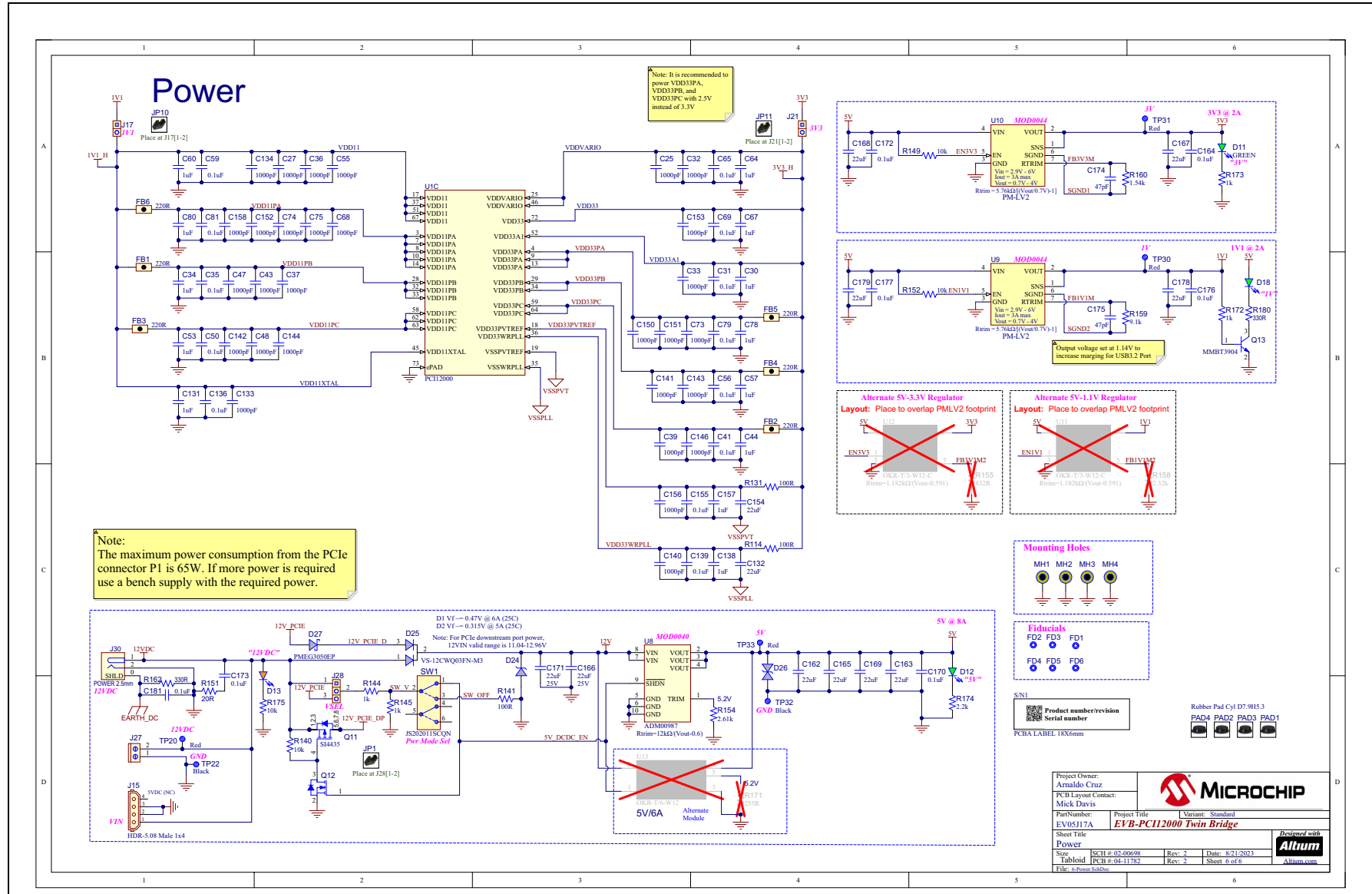
This appendix shows the EVB-PCI12000 Evaluation Kit Schematics.

FIGURE A-4: UART SCHEMATICS



Project Owner: Arnaldo Cruz		
PCB Layout Contact: Mick Davis		
Part Number: EV05J17A	Project Title: EVB-PC112000 Twin Bridge	Variant: Standard
Sheet Title: UART		
Size: Tabletop	SCH #: 02-00698	Rev: 2
File: 434075.cds	PCB #: 04-11782	Rev: 2
Date: 8/21/2023	Sheet: 5 of 6	Designed with:

FIGURE A-5: POWER SCHEMATICS





Appendix B. Bill of Materials

B.1 INTRODUCTION

This appendix contains the EVB-PCI12000 Evaluation Kit Bill of Materials.

TABLE B-1: BILL OF MATERIALS (INSTALLED COMPONENTS)

Item	Qty.	Reference	Description	Manufacturer	Manufacturer Part Number
1	64	C1, C2, C3, C4, C9, C51, C52, C54, C55, C56, C57, C58, C64, C66, C67, C75, C76, C77, C80, C81, C85, C86, C91, C93, C98, C99, C100, C101, C103, C108, C112, C116, C129, C133, C136, C137, C141, C142, C143, C144, C147, C150, C156, C160, C161, C162, C165, C187, C188, C189, C192, C193, C195, C197, C203, C205, C209, C210, C211, C212, C213, C214, C215, C216	CAP CER 0.1uF 35V 10% X7R SMD 0402	TDK Corporation	CGA2B3X7R1V104K050BB
2	4	C5, C6, C7, C8	CAP ALU 150uF 10V 20% SMD C	Panasonic Electronic Components	EEE-FT1A151AR
3	2	C10, C196	CAP CER 1uF 16V 10% X5R SMD 0603	AVX	0603YD105KAT2A
4	8	C11, C12, C13, C14, C15, C16, C17, C18	CAP CER 47uF 6.3V 20% X5R SMD 0805	Taiyo Yuden	JMK212BJ476MG-T
5	7	C19, C20, C97, C104, C106, C107, C179	CAP CER 0.1uF 16V 10% X7R SMD 0402	Würth Electronics Inc, KEMET	885012205037, C0402C104K4RACAUTO
6	6	C21, C50, C109, C121, C140, C172	CAP CER 10uF 10V 10% X5R SMD 0603	Samsung Electro-Mechanics	CL10A106KP8NNNC
7	3	C22, C29, C31	CAP CER 4.7uF 10V 10% X5R SMD 0603	KEMET	C0603C475K8PACTU
8	19	C23, C24, C25, C26, C27, C28, C30, C33, C35, C36, C38, C39, C40, C43, C47, C48, C49, C130, C198	CAP CER 0.1uF 50V 10% X7R SMD 0402	TDK Corporation, Taiyo Yuden	C1005X7R1H104K050BB, UMK105B7104KV-FR
9	14	C37, C44, C53, C68, C70, C83, C88, C89, C94, C105, C148, C168, C182, C194	CAP CER 1uF 35V 10% X5R SMD 0402	Murata Electronics North America	GRM155R6YA105KE11D
10	2	C42, C46	CAP CER 22uF 10V 20% X5R SMD 0603	TDK Corporation	C1608X5R1A226M080AC
11	37	C59, C60, C61, C62, C63, C65, C69, C71, C74, C79, C82, C84, C90, C92, C95, C96, C102, C126, C145, C151, C152, C153, C154, C155, C157, C163, C164, C166, C167, C169, C173, C174, C175, C176, C177, C180, C181	CAP CER 1000pF 50V 5% NP0 SMD 0402 AEC-Q200	Murata Electronics	GCM1555C1H102JA16J
12	6	C72, C73, C178, C183, C184, C185	CAP CER 1pF 50V C0G/NP0 SMD 0402 AEC-Q200	Murata Electronics North America	GCM1555C1H1R0CA16J
13	2	C78, C87	CAP CER 10pF 50V 5% NP0 SMD 0402	Murata	GJM1555C1H100JB01D
14	9	C110, C111, C117, C125, C127, C128, C186, C190, C191	CAP CER 22uF 25V 20% X5R SMD 0805	Yageo	CC0805MKX5R8BB226
15	16	C113, C114, C115, C118, C119, C120, C122, C123, C134, C135, C138, C139, C158, C159, C170, C171	CAP CER 0.47uF 16V 10% X7R SMD 0603	Murata	GRM188R71C474KA88D
16	1	C124	CAP CER 4.7uF 10V 10% X5R SMD 0603	KEMET	C0603C475K8PACTU
17	1	C132	CAP CER 47pF 5% 50V C0G/NP0 SMD 0402 AEC-Q200	Murata Electronics North America	GCM1555C1H470JA16D
18	1	C199	CAP CER 10uF 25V 20% X5R SMD 0603	Murata Electronics North America	GRM188R61E106MA73D
19	1	C200	CAP CER 47uF 6.3V 20% X5R SMD 0805	Taiyo Yuden	JMK212BJ476MG-T

TABLE B-1: BILL OF MATERIALS (INSTALLED COMPONENTS)

Item	Qty.	Reference	Description	Manufacturer	Manufacturer Part Number
20	6	C201, C202, C204, C206, C207, C208	CAP CER 0.1uF 35V 10% X7R SMD 0402	TDK Corporation	CGA2B3X7R1V104K050BB
21	3	D1, D2, D3	DIO LED GREEN 2V 30mA 35mcd Clear SMD 0603	Lite-On Inc	LTST-C191KGKT
22	12	D4, D6, D7, D8, D9, D11, D12, D13, D14, D15, D16, D17	DIO LED GREEN 2V 30mA 35mcd Clear SMD 0603	Lite-On Inc	LTST-C191KGKT
23	2	D5, D10	DIO RED 2V 20mA 54mcd CLEAR SMD 0603	Lite-On Inc.	LTST-C191KRKT
24	1	D18	DIO SCTKY ARRAY VS-12CWQ03FN-M3 0.37V 6A SMD DPAK	Vishay Semiconductor Diodes Division	VS-12CWQ03FN-M3
25	1	D19	DIO SCTKY PMEG3050EP 315mV 5A 30V SOD-128	NXP Semiconductors	PMEG3050EP
26	1	D20	DIO TVS SMBJ13D-M3/I 13V 21.2V 600W SMD DO-214AA	Vishay Semiconductor Diodes Division	SMBJ13D-M3/I
27	1	D21	DIO RECT MMBD914LT1G 1V 10mA 100V SMD SOT-23-3	ON Semiconductor	MMBD914LT1G
28	2	D22, D23	DIO SBAR SBR160S23-7 SBR 530mV 900mA 60V SMD SOT23-3	Diodes Incorporated	SBR160S23-7
29	3	D24, D25, D26	DIO TVS ARRAY SESD7L5.0DT5G 5V AEC-Q101 SMD SOT-723	ON Semiconductor	SESD7L5.0DT5G
30	3	FB1, FB2, FB10	FERRITE 500mA 220R SMD 0603	Murata Electronics North America	BLM18AG221SN1D
31	1	FB3	FERRITE 33R@100MHz 3A SMD 0603	Murata	BLM18PG330SN1D
32	2	FB6, FB7	FERRITE 33R@100MHz 3A SMD 0603	Murata	BLM18PG330SN1D
33	6	FID1, FID2, FID3, FID4, FID5, FID6	FIDUCIAL		
34	3	J1, J2, J3	USB2.0 STD-A FEMALE UPRIGHT	Amphenol FCI	73725-0110BLF
35	1	J4	CONN MAGJACK 1PORT 1000 BASE-T	Pulse Electronics Network	JD1-0001NL
36	1	J5	CON USB3.1 TID TYPE-C Female SMD R/A	Amphenol Commercial Products	12401610E4#2A
37	7	J8, J15, J21, J27, J29, J30, J31	CON HDR-2.54 Male 1x2 Gold 5.84MH TH VERT	FCI	68001-202HLF
38	1	J9	CON EDGE PCIe 1mm 36P Female TH R/A	Samtec Inc.	PCIE-036-02-F-D-RA
39	3	J11, J12, J13	CON HDR-2.54 Male 1x6 Tin 5.84MH TH VERT	WURTH ELEKTRONIK	61300611121
40	2	J14, J16	CON HDR-2.54 Male 1x1 Gold 5.84MH TH VERT	Samtec	TSW-101-07-G-S
41	1	J17	CON HDR-2.54 Male 1x3 Tin 5.84MH TH VERT	Samtec	TSW-103-07-T-S
42	2	J18, J34	CON HDR 2.54 MALE 2x10 3u" GOLD IN CONTACT AREA MATTE TIN ON TAIL 5.84MH TH VERT	Samtec	TSW-110-07-F-D
43	5	J19, J20, J33, J39, J40	CON HDR-2.54 Male 3x4 Gold 5.84MH TH VERT	Samtec Inc.	TSW-104-07-G-T
44	1	J22	CON HDR-2.54 Male 1x2 Gold 5.84MH TH VERT	FCI	77311-118-02LF
45	4	J23, J28, J41, J45	CON HDR-2.54 Male 2x2 Gold 5.84MH TH VERT	Wurth Electronics Inc	61300421121
46	4	J24, J25, J43, J44	CON HDR-2.54 Male 2x5 0.100" (2.54mm) TH VERT	Samtec	TSW-105-07-G-D
47	4	J26, J38, J42, J46	CON HDR-2.54 Male 2x4 Gold 5.84MH TH VERT	Wurth Electronics Inc	61300821121
48	4	J35, J36, J50, J51	CON TERMINAL 2.54mm 1x5 Female 20-30AWG 6A TH R/A	Phoenix Contact	1725685
49	1	J47	CON HDR-5.08 Male 1x4 Tin SHROUD 12.32MH TH R/A	TE Connectivity	641737-1
50	1	J48	CON POWER 2.5mm 5.5mm TH R/A	CUI Inc.	PJ-063BH
51	1	J49	CON TERMINAL 5.08mm 1X2 Female 16-30AWG 13.5A TH RA	TE Connectivity	282836-2

TABLE B-1: BILL OF MATERIALS (INSTALLED COMPONENTS)

Item	Qty.	Reference	Description	Manufacturer	Manufacturer Part Number
52	1	L1	RES TKF 0R 1/8W SMD 0805	Panasonic	ERJ-6GEY0R00V
53	1	Q1	TRANS FET P-CH SI4435 30V 12.6A 4.8W 0.019R SOIC-8	Vishay / Siliconix	SI4435FDY-T1-GE3
54	7	Q2, Q5, Q7, Q10, Q11, Q12, Q13	TRANS FET N-CH 2N7002-7-F 60V 170mA 370mW SOT-23-3	Diodes Inc	2N7002-7-F
55	1	Q3	TRANS BJT NPN MMBT3904 40V 200mA 310mW SOT-23-3	NXP Semiconductors	PMBT3904,215
56	1	Q4	TRANS FET P-CH SI9433 20V 4.5A 1.3W 0.040R SOIC-8	Vishay	SI9433BDY-T1-GE3
57	1	Q6	TRANS FET DUAL P+P FDG6316P 12V 0.7A 0.270R 0.3R SC-88	ON Semiconductor	FDG6316P
58	2	R2, R4	RES TKF 0R 1/16W SMD 0402	Yageo	RC0402JR-070RL
59	8	R5, R55, R96, R152, R159, R162, R164, R228	RES TKF 1k 5% 1/10W SMD 0603	Panasonic	ERJ-3GEYJ102V
60	12	R6, R7, R8, R9, R10, R11, R95, R97, R99, R105, R106, R107	RES TKF 22R 1% 1/20W SMD 0402	Panasonic Electronic Components	ERJ-2RKF22R0X
61	37	R12, R13, R22, R23, R24, R26, R29, R49, R51, R65, R72, R85, R90, R91, R92, R110, R113, R123, R144, R148, R154, R170, R183, R184, R186, R188, R189, R191, R192, R193, R194, R195, R196, R204, R206, R216, R217	RES TKF 0R 1/10W SMD 0603	Stackpole Electronics Inc	RMCF0603ZT0R00
62	4	R14, R16, R118, R119	RES TKF 49.9R 1% 1/10W SMD 0603	ROHM	MCR03EZPFX49R9
63	4	R15, R17, R18, R19	RES TKF 33R 5% 1/10W SMD 0603	Panasonic	ERJ-3GEYJ330V
64	6	R20, R21, R112, R114, R115, R120	RES TKF 43R 1% 1/10W SMD 0402	Panasonic Electronic Components	ERJ-2RKF43R0X
65	21	R25, R59, R66, R67, R68, R69, R81, R86, R87, R88, R111, R125, R171, R197, R199, R202, R210, R240, R241, R242, R243	RES TF 100k 1% 1/8W SMD 0603	Vishay	MCT06030C1003FP500
66	4	R27, R213, R214, R215	RES TKF 330R 1% 1/10W SMD 0603	Panasonic	ERJ-3EKF3300V
67	1	R28	RES TKF 20R 1% 1/10W SMD 0603	Panasonic	ERJ-3EKF20R0V
68	17	R30, R44, R46, R75, R76, R121, R122, R131, R135, R181, R182, R190, R211, R232, R233, R238, R239	RES TKF 10k 1% 1/10W SMD 0603	Vishay, ROHM	CRCW060310K0FKEA, MCR03EZPFX1002
69	2	R31, R33	RES TF 2.2k 1% 1/8W SMD 0603	Vishay Beyschlag	MCT06030C2201FP500
70	17	R32, R34, R37, R39, R41, R45, R47, R52, R57, R62, R63, R64, R77, R80, R83, R93, R169	RES TKF 100k 5% 1/16W SMD 0402	Yageo	RC0402JR-07100KL
71	20	R35, R73, R74, R79, R84, R94, R101, R138, R141, R172, R175, R187, R198, R207, R224, R225, R226, R227, R230, R231	RES TKF 1k 1% 1/10W SMD 0603	Panasonic	ERJ-3EKF1001V
72	8	R36, R38, R53, R54, R82, R89, R102, R108	RES TKF 120R 1% 1/10W SMD 0603	Panasonic	ERJ-3EKF1200V
73	1	R40	RES TKF 20R 1% 1/10W SMD 0603	Panasonic	ERJ-3EKF20R0V
74	1	R42	RES TKF 4.42k 1% 1/10W SMD 0603	Vishay Dale	CRCW06034K42FKEA

TABLE B-1: BILL OF MATERIALS (INSTALLED COMPONENTS)

Item	Qty.	Reference	Description	Manufacturer	Manufacturer Part Number
75	1	R43	RES TKF 30k 1% 1/10W SMD 0603	Stackpole Electronics Inc	RMCF0603FT30K0
76	2	R48, R58	RES TKF 680R 1% 1/10W SMD 0603	Panasonic	ERJ-3EKF6800V
77	1	R60	RES TF 8.98k 0.5% 1/10W SMD 0603 AEC-Q200	KOA Speer	RN73R1JTTD8981D100
78	1	R61	RES TKF 2.7k 1% 1/10W SMD 0603	Panasonic	ERJ-3EKF2701V
79	4	R78, R104, R109, R126	RES TF 10k 1% 1/10W SMD 0402 AEC-Q200	Vishay Beyschlag	MCS0402MC1002FE000
80	1	R98	RES TKF 200R 1% 1/10W SMD 0603 AEC-Q200	Vishay / Dale	CRCW0603200RFKEA
81	2	R100, R103	RES TKF 100R 5% 1/10W SMD 0603	Vishay	CRCW0603100RJNEA
82	6	R146, R149, R151, R166, R167, R180	RES TKF 10k 5% 1/10W SMD 0603	Panasonic	ERJ-3GEYJ103V
83	2	R165, R179	RES TKF 330R 5% 1/10W SMD 0603	Panasonic	ERJ-3GEYJ331V
84	1	R173	RES TKF 6.04k 1% 1/10W SMD 0603	Yageo	9T06031A6041FBHFT
85	2	R174, R218	RES TKF 2R 5% 0.5W SMD 0805 AEC-Q200	Panasonic - ECG	ERJ-6DQJ2R0V
86	1	R185	RES TKF 33k 1% 1/10W AEC-Q200 SMD 0603	Vishay	CRCW060333K0FKEA
87	1	R221	RES TKF 43k 1% 1/10W SMD 0603	Yageo	9C06031A4302FKHFT
88	1	R222	RES TKF 49.9k 1% 1/10W SMD 0603	Panasonic	ERJ-3EKF4992V
89	1	R229	RES TKF 330R 1% 1/10W SMD 0603	Panasonic	ERJ-3EKF3300V
90	4	R234, R235, R236, R237	RES TKF 300k 1% 1/10W SMD 0603	Panasonic	ERJ-3EKF3003V
91	1	SW1	SWITCH SLIDE DPDT 6V 300MA JS202011CQN TH	C&K Components	JS202011CQN
92	7	TP1, TP15, TP16, TP17, TP25, TP34, TP35	MISC, TEST POINT MULTI PURPOSE MINI BLACK	Keystone	5001
93	3	TP6, TP31, TP36	MISC, TEST POINT MULTI PURPOSE MINI RED	Keystone	5000
94	3	TP30, TP32, TP33	CON TP LOOP Orange TH	Keystone Electronics	5003
95	4	U14, U15, U16, U23	IC TRANSCEIVER MAX3161EE FULL RS-232/RS-485/RS-422 SSOP-24	Maxim Integrated	MAX3161EEAG+
96	6	U17, U18, U19, U27, U29, U32	IC BUFFER 74LVC1G17 NON-INVERT SC-74A	Nexperia	74LVC1G17GV,125
97	3	U20, U21, U22	IC BUFFER MC74VHC1G07 NON-INVERT SOT-23	Onsemi	MC74VHC1G07DTT1G
98	1	U24	IC LOGIC MC74VHC1G09 AND GATE SOT-23-5	Onsemi	MC74VHC1G09DTT1G
99	1	U26	74LVC1G14GW,125 SCHMITT-TRG INVERTER	NXP	74LVC1G14GW,125
100	4	U28, U30, U31, U33	IC LOGIC 74LVC1GU04 NON-BUFF INV SOT-23	Texas Instruments	SN74LVC1GU04DBVR

TABLE B-2: BILL OF MATERIALS (MICROCHIP PARTS)

Item	Qty.	Reference	Description	Manufacturer	Manufacturer Part Number
1	1	U1	MCHP INTERFACE USB TYPE-C PORT PROTECT UCS4002 QFN-20 AECQ100	Microchip Technology	UCS4002-E/6N
2	2	U2, U3	MCHP INTERFACE USB PWR Controller with Auto Discharge UCS2113-1C-V/G4 QFN-20	Microchip Technology	UCS2113-1C-V/G4
3	1	U4	MCHP INTERFACE KSZ9131RNX 10/100/1000BASE-T QFN-48	Microchip Technology	kSZ9131RNXC
4	1	U5	MCHP MEMORY SERIAL EEPROM 64Kb I2C AT24CS64-SSHM-B SOIC-8	Microchip Technology	AT24C64D-SSHM-B
5	1	U6	MCHP CLOCK DISTRIBUTION 1:2 UPI/QPI fanout buffer 0-400MHz ZL40262 QFN-20	Microchip Technology	ZL40262LDG1
6	1	U7	MCHP INTERFACE PCI Switch USB 3.2 Host Controller Ethernet PCI11414 DQFN-164 VQFN-132	Microchip Technology	PCI11414
7	1	U8	PM-LV2 Regulator PCB Module	Microchip Technology	10-10488
8	2	U10, U12	PCB Assembly MCP19035 Power Module 8A Evaluation Board www.microchip.com/ADM00987	Microchip Technology	10-10367
9	1	U25	MCHP ANALOG SUPERVISOR 2.93V MIC6315-29D2UY-TR SOT-143	Microchip Technology	MIC6315-29D2UY-TR
10	1	Y1	MCHP CLOCK OSCILLATOR SNGL 25MHz VC-820-EAE-KAAN-25M0000000 SMD 3.2X2.5	Microchip Technology	VC-820-EAE-KAAN-25M0000000
11	1	Y2	MCHP CRYSTAL 25Mhz 10pF SMD L3.2W2.5H0.8	Microchip Technology	VXM7-9013-25M0000000

TABLE B-3: BILL OF MATERIALS (DO-NOT-POPULATE COMPONENTS)

Item	Qty.	Reference	Description	Manufacturer	Manufacturer Part Number
1	1	BKT1	PCI Bracket, Global G5452	Global	
2	1	BRK1	MECH HW MISC PCIe Board Retainer	Amfeltec Corporation	SKU-038-01
3	2	C32, C34	CAP CER 15pF 5% 50V C0G/NP0 SMD 0402 AEC-Q200	Murata Electronics North America	GCM1555C1H150JA16D
4	2	C41, C131	CAP CER 0.1uF 50V 10% X7R SMD 0402	TDK Corporation, Taiyo Yuden	C1005X7R1H104K050BB, UMK105B7104KV-FR
5	1	C45	CAP CER 1uF 35V 10% X5R SMD 0402	Murata Electronics North America	GRM155R6YA105KE11D
6	2	C146, C149	CAP CER 22uF 6.3V 20% X6S SMD 0603	Murata Electronics	GRM188C80J226ME15D
7	4	FB4, FB5, FB8, FB9	FERRITE 33R@100MHz 3A SMD 0603	Murata	BLM18PG330SN1D
8	2	J6, J7	CON HDR-2.54 Male 1x1 Gold 5.84MH TH VERT	Samtec	TSW-101-07-G-S
9	1	J10	CON HDR-2.54 Male 1x6 Tin 5.84MH TH VERT	WURTH ELEKTRONIK	61300611121
10	2	J32, J37	CON RF Coaxial SMA Female 2P SMD VERT	Cinch Connectivity Solutions Johnson	142-0701-201
11	2	Q8, Q9	TRANS FET N-CH 2N7002-7-F 60V 170mA 370mW SOT-23-3	Diodes Inc	2N7002-7-F
12	2	R1, R3	RES TKF 0R 1/16W SMD 0402	Yageo	RC0402JR-070RL
13	1	R50	RES TKF 30k 1% 1/10W SMD 0603	Stackpole Electronics Inc	RMCF0603FT30K0
14	1	R56	RES TKF 2.32k 1% 1/10W SMD 0603	Panasonic	ERJ-3EKF2321V

TABLE B-3: BILL OF MATERIALS (DO-NOT-POPULATE COMPONENTS)

Item	Qty.	Reference	Description	Manufacturer	Manufacturer Part Number
15	31	R70, R71, R117, R124, R127, R128, R129, R130, R132, R133, R134, R136, R137, R139, R140, R142, R153, R155, R156, R157, R158, R176, R177, R203, R205, R208, R209, R219, R220, R244, R245	RES TKF 0R 1/10W SMD 0603	Stackpole Electronics Inc	RMCF0603ZT0R00
16	3	R116, R200, R201	RES TF 100k 1% 1/8W SMD 0603	Vishay	MCT06030C1003FP500
17	6	R143, R150, R161, R163, R168, R178	RES TKF 1k 5% 1/10W SMD 0603	Panasonic	ERJ-3GEYJ102V
18	3	R145, R147, R160	RES TKF 10k 5% 1/10W SMD 0603	Panasonic	ERJ-3GEYJ103V
19	1	R212	RES TKF 100k 5% 1/16W SMD 0402	Yageo	RC0402JR-07100KL
20	1	R223	RES TKF 560R 1% 1/10W SMD 0603	Yageo	RC0603FR-07560RL
21	1	U9	MOD DC-DC OKR-T/3-W12-C 6V 15W	Murata Electronics North America	OKR-T/3-W12-C
22	2	U11, U13	MOD DC-DC OKR-T/6-W12-C 6V 30W	Murata Power Solutions Inc.	OKR-T/6-W12-C

NOTES:



Appendix C. PCB Silk Screens

C.1 INTRODUCTION

This appendix shows the top and bottom silk screens of the EVB-PCI12000 Evaluation Kit.

FIGURE C-1: EVB-PCI12000 TOP SILK SCREEN IMAGE

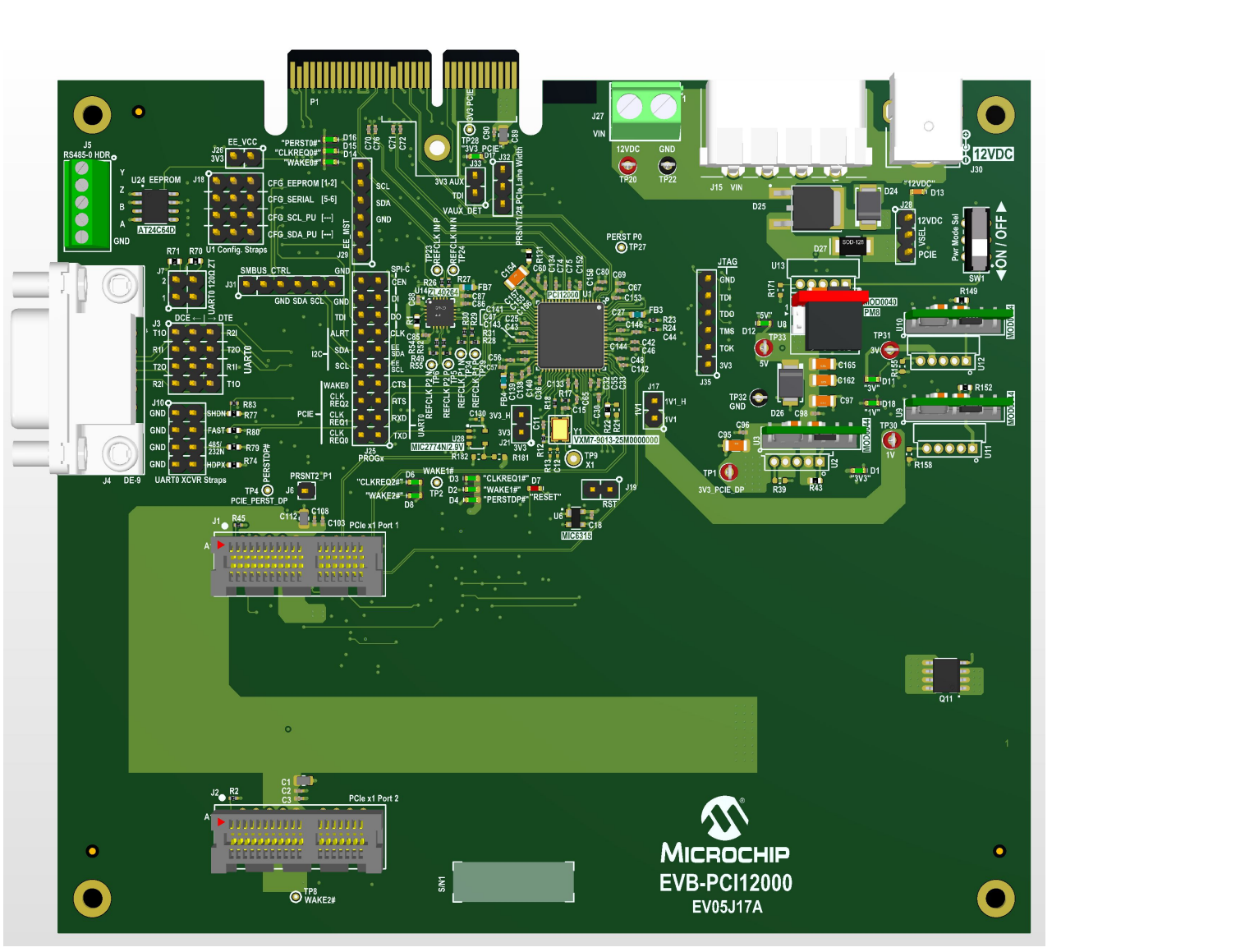
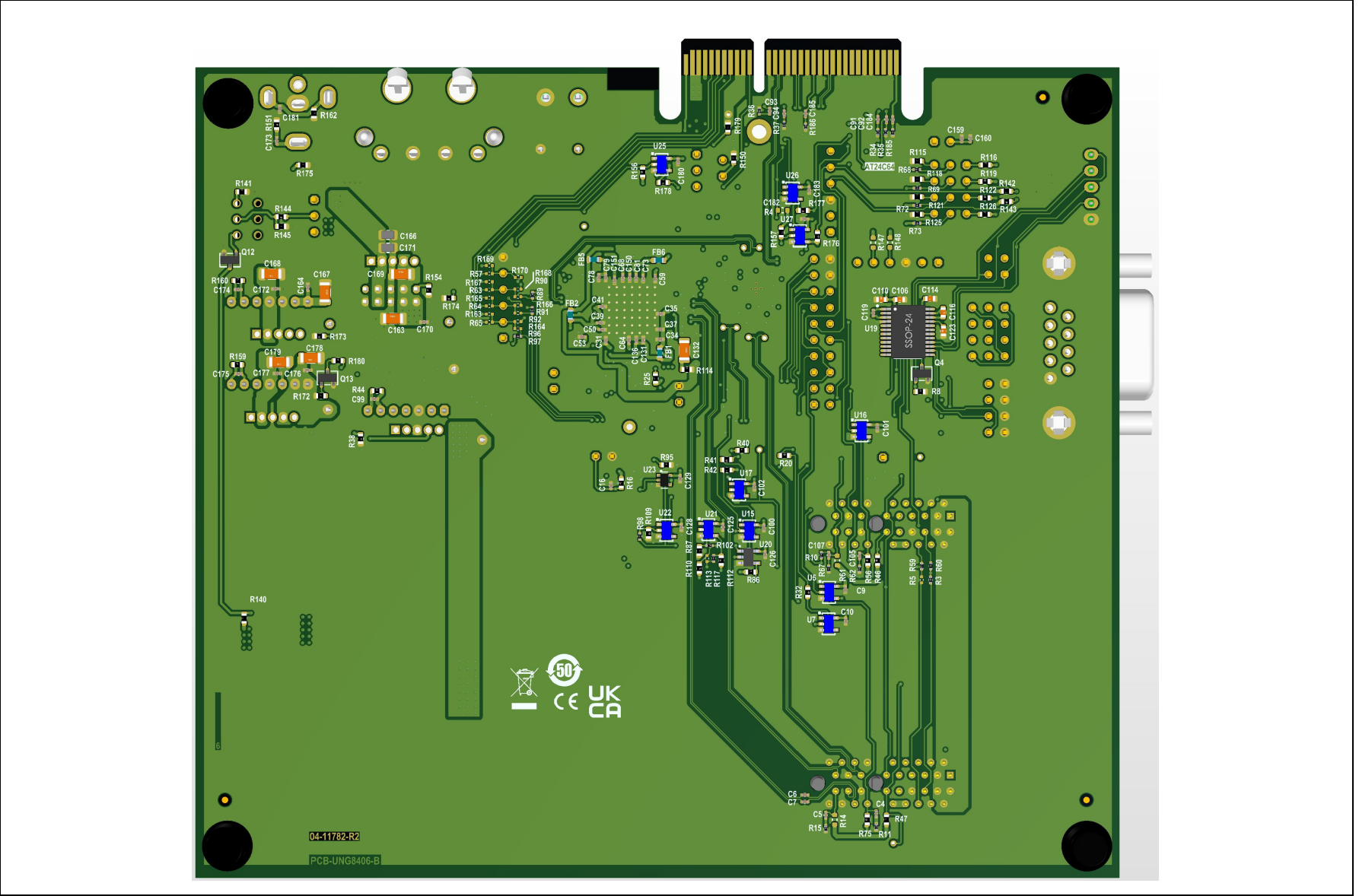


FIGURE C-2: EVB-PCI12000 BOTTOM SILK SCREEN IMAGE





MICROCHIP

Worldwide Sales and Service

AMERICAS

Corporate Office
2355 West Chandler Blvd.
Chandler, AZ 85224-6199
Tel: 480-792-7200
Fax: 480-792-7277
Technical Support:
<http://www.microchip.com/support>
Web Address:
www.microchip.com

Atlanta

Duluth, GA
Tel: 678-957-9614
Fax: 678-957-1455

Austin, TX

Tel: 512-257-3370

Boston

Westborough, MA
Tel: 774-760-0087
Fax: 774-760-0088

Chicago

Itasca, IL
Tel: 630-285-0071
Fax: 630-285-0075

Dallas

Addison, TX
Tel: 972-818-7423
Fax: 972-818-2924

Detroit

Novi, MI
Tel: 248-848-4000

Houston, TX

Tel: 281-894-5983

Indianapolis

Noblesville, IN
Tel: 317-773-8323
Fax: 317-773-5453
Tel: 317-536-2380

Los Angeles

Mission Viejo, CA
Tel: 949-462-9523
Fax: 949-462-9608
Tel: 951-273-7800

Raleigh, NC

Tel: 919-844-7510

New York, NY

Tel: 631-435-6000

San Jose, CA

Tel: 408-735-9110
Tel: 408-436-4270

Canada - Toronto

Tel: 905-695-1980
Fax: 905-695-2078

ASIA/PACIFIC

Australia - Sydney
Tel: 61-2-9868-6733

China - Beijing
Tel: 86-10-8569-7000

China - Chengdu
Tel: 86-28-8665-5511

China - Chongqing
Tel: 86-23-8980-9588

China - Dongguan
Tel: 86-769-8702-9880

China - Guangzhou
Tel: 86-20-8755-8029

China - Hangzhou
Tel: 86-571-8792-8115

China - Hong Kong SAR
Tel: 852-2943-5100

China - Nanjing
Tel: 86-25-8473-2460

China - Qingdao
Tel: 86-532-8502-7355

China - Shanghai
Tel: 86-21-3326-8000

China - Shenyang
Tel: 86-24-2334-2829

China - Shenzhen
Tel: 86-755-8864-2200

China - Suzhou
Tel: 86-186-6233-1526

China - Wuhan
Tel: 86-27-5980-5300

China - Xian
Tel: 86-29-8833-7252

China - Xiamen
Tel: 86-592-2388138

China - Zhuhai
Tel: 86-756-3210040

ASIA/PACIFIC

India - Bangalore
Tel: 91-80-3090-4444

India - New Delhi
Tel: 91-11-4160-8631

India - Pune
Tel: 91-20-4121-0141

Japan - Osaka
Tel: 81-6-6152-7160

Japan - Tokyo
Tel: 81-3-6880-3770

Korea - Daegu
Tel: 82-53-744-4301

Korea - Seoul
Tel: 82-2-554-7200

Malaysia - Kuala Lumpur
Tel: 60-3-7651-7906

Malaysia - Penang
Tel: 60-4-227-8870

Philippines - Manila
Tel: 63-2-634-9065

Singapore
Tel: 65-6334-8870

Taiwan - Hsin Chu
Tel: 886-3-577-8366

Taiwan - Kaohsiung
Tel: 886-7-213-7830

Taiwan - Taipei
Tel: 886-2-2508-8600

Thailand - Bangkok
Tel: 66-2-694-1351

Vietnam - Ho Chi Minh
Tel: 84-28-5448-2100

EUROPE

Austria - Wels
Tel: 43-7242-2244-39
Fax: 43-7242-2244-393

Denmark - Copenhagen
Tel: 45-4485-5910
Fax: 45-4485-2829

Finland - Espoo
Tel: 358-9-4520-820

France - Paris
Tel: 33-1-69-53-63-20
Fax: 33-1-69-30-90-79

Germany - Garching
Tel: 49-8931-9700

Germany - Haan
Tel: 49-2129-3766400

Germany - Heilbronn
Tel: 49-7131-72400

Germany - Karlsruhe
Tel: 49-721-625370

Germany - Munich
Tel: 49-89-627-144-0
Fax: 49-89-627-144-44

Germany - Rosenheim
Tel: 49-8031-354-560

Israel - Hod Hasharon
Tel: 972-9-775-5100

Italy - Milan
Tel: 39-0331-742611
Fax: 39-0331-466781

Italy - Padova
Tel: 39-049-7625286

Netherlands - Drunen
Tel: 31-416-690399
Fax: 31-416-690340

Norway - Trondheim
Tel: 47-7288-4388

Poland - Warsaw
Tel: 48-22-3325737

Romania - Bucharest
Tel: 40-21-407-87-50

Spain - Madrid
Tel: 34-91-708-08-90
Fax: 34-91-708-08-91

Sweden - Gothenberg
Tel: 46-31-704-60-40

Sweden - Stockholm
Tel: 46-8-5090-4654

UK - Wokingham
Tel: 44-118-921-5800
Fax: 44-118-921-5820