

Microchip

Filter specification

TFS 70H33

1/5

Measurement condition

Ambient temperature:	25	°C
Input power level:	0	dBm
Terminating impedance: *		
Input:	151 Ω 21,3 pF	
Output:	147 Ω 21,5 pF	

Characteristics

Remark:

The reference level for the relative attenuation a_{rel} of the TFS 70H33 is the minimum of the pass band attenuation a_{min} . The minimum of the pass band attenuation a_{min} is defined as the insertion loss a_e . The centre frequency f_c is the arithmetic mean value of the upper and lower frequencies at the 20 dB filter attenuation level relative to the insertion loss a_e . The temperature coefficient of frequency TC_f is valid for both the reference frequency f_c and the frequency response of the filter in the operating temperature range. The frequency shift of the filter in the operating temperature range is not included in the production tolerance scheme.

Data		typ. value		tolerance / limit	
Insertion loss (reference level)	a_e	24,5	dB	max.	26 dB
Centre frequency at ambient temperature	f_c	70,0	MHz		± 0,09 MHz
Passband	PB			f_c	± 2,5 MHz
Amplitude ripple at $f_c \pm 2$ MHz		0,3	dB	max.	0,8 dB
Bandwidth	BW				
1 dB		4,82	MHz	min.	4,5 MHz
3 dB		5,28	MHz	min.	5,0 MHz
20 dB		6,55	MHz		-
40 dB		7,19	MHz	max.	7,5 MHz
55 dB		7,44	MHz		-
Relative attenuation	a_{rel}				
f_c	... $f_c \pm 2$ MHz			max.	0,8 dB
$f_c \pm 2$ MHz	... $f_c \pm 2,25$ MHz			max.	1 dB
$f_c \pm 2,25$ MHz	... $f_c \pm 2,5$ MHz			max.	3 dB
$f_c \pm 3,75$ MHz	... $f_c \pm 5$ MHz	50 ... 57	dB	min.	40 dB
$f_c \pm 5$ MHz	... $f_c \pm 30$ MHz	65	dB	min.	50 dB
Group delay	mean value in PB	2,9	µs		-
Group delay ripple within PB p-p		35	ns	max.	90 ns
Deviation from linear phase within PB		2°	p-p (r.m.s. 0,5°)	max.	5° p-p
Triple transit response suppression		54	dB		-
Crosstalk		60	dB		-
Operating temperature range	OTR	-			- 40 °C ... + 85°C
Storage temperature range		-			- 55 °C ... + 85°C
Temperature coefficient of frequency	TC_f **	- 19	ppm/K		-

*) The terminating impedances depend on parasitics and q-values of matching elements and the board used, and are to be understood as reference values only. Should there be additional questions do not hesitate to ask for an application note or contact our design team.

***) $\Delta f_c(\text{Hz}) = TC_f(\text{ppm/K}) \times (T-T_A) \times f_{CTA}(\text{MHz})$

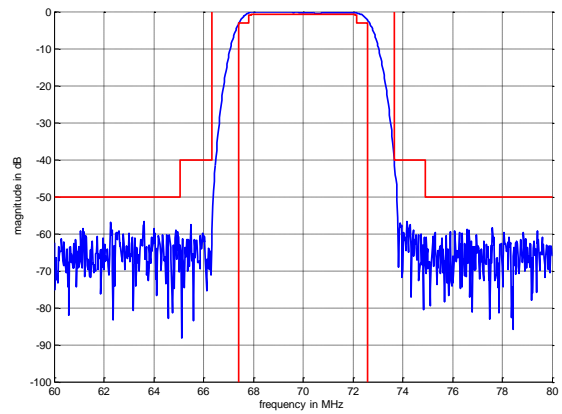
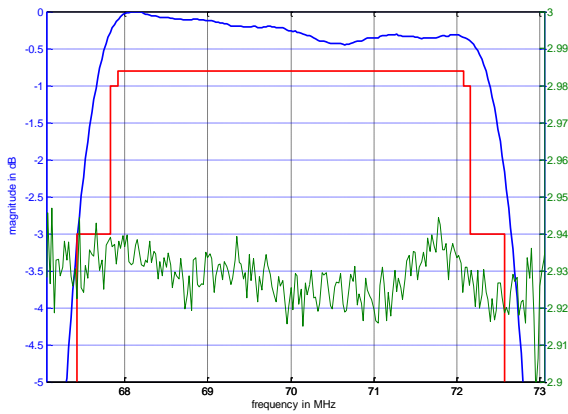
Generated:

Checked / Approved:

Microchip Frequency Technology GmbH
Potsdamer Straße 18
D 14 513 TELTOW / Germany
Tel: (+49) 3328 4784-0 / Fax: (+49) 3328 4784-30

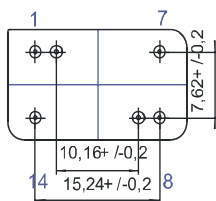
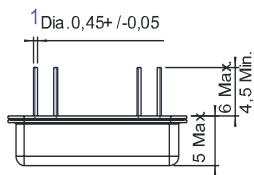
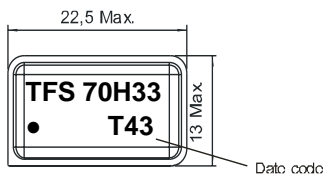
Microchip Frequency Technology GmbH reserves the right to make changes to the product(s) and/or information contained herein without notice. No liability is assumed as a result of their use or application. No rights under any patent accompany the sale of any such product(s) or information.

Filter characteristic



Construction and pin connection

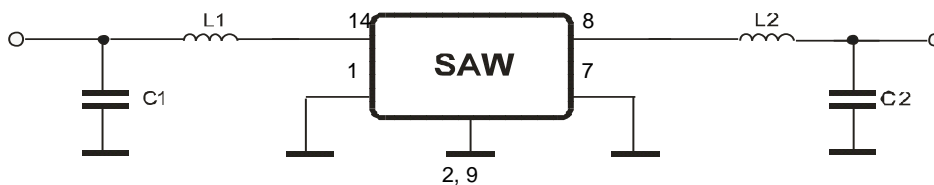
(All dimensions in mm)



- 1 Input RF Return
- 2 Ground
- 7 Output RF Return
- 8 Output
- 9 Ground
- 14 Input

Date code: Year + week
 T 2005
 U 2006
 V 2007
 ...

50 Ω Test circuit



Microchip Frequency Technology GmbH
 Potsdamer Straße 18
 D 14 513 TELTOW / Germany
 Tel: (+49) 3328 4784-0 / Fax: (+49) 3328 4784-30

Microchip Frequency Technology GmbH reserves the right to make changes to the product(s) and/or information contained herein without notice. No liability is assumed as a result of their use or application. No rights under any patent accompany the sale of any such product(s) or information.

Microchip**Filter specification****TFS 70H33****3/5**

Stability characteristics

After the following tests the filter shall meet the whole specification:

1. Shock: 500g, 1 ms, half sine wave, 3 shocks each plane;
DIN IEC 68 T2 - 27
2. Vibration: 10 Hz to 500 Hz, 0,35 mm or 5 g respectively, 1 octave per min, 10 cycles per plan, 3 plans;
DIN IEC 68 T2 - 6
3. Change of temperature: -55 °C to 125°C / 30 min. each / 10 cycles
DIN IEC 68 part 2 – 14 Test N
4. Resistance to solder heat (reflow): reflow possible: twice max.;
for temperature conditions refer to the attached "Air reflow temperature conditions" on page 4;

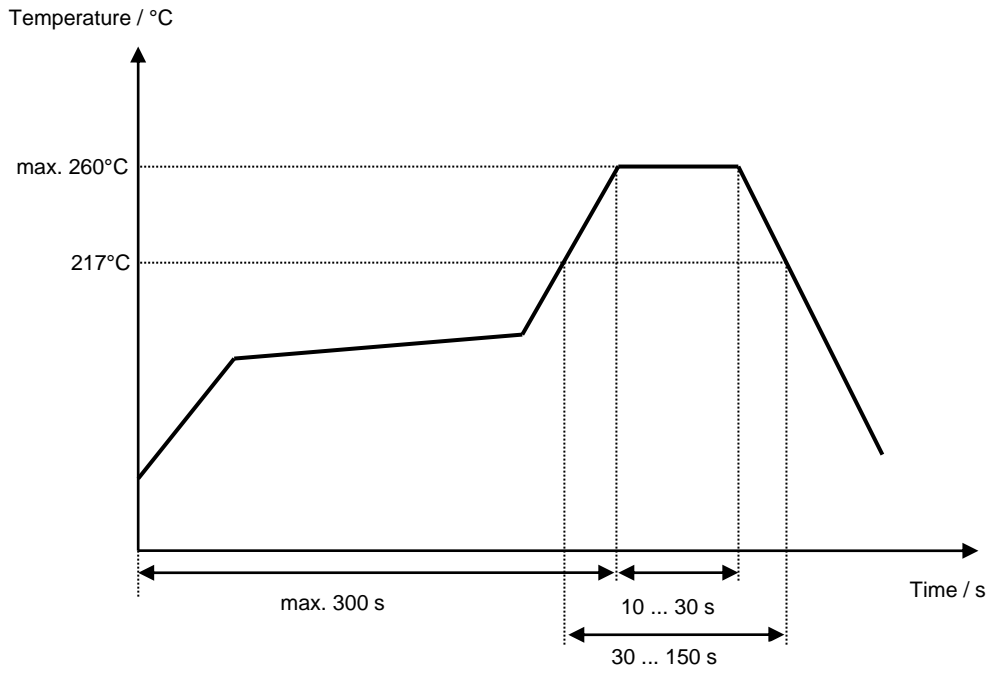
Microchip Frequency Technology GmbH
Potsdamer Straße 18
D 14 513 TELTOW / Germany
Tel: (+49) 3328 4784-0 / Fax: (+49) 3328 4784-30

Microchip Frequency Technology GmbH reserves the right to make changes to the product(s) and/or information contained herein without notice. No liability is assumed as a result of their use or application. No rights under any patent accompany the sale of any such product(s) or information.

Air reflow temperature conditions

Conditions	Exposure
Average ramp-up rate (30°C to 217°C)	less than 3°C/second
> 100°C	between 300 and 600 seconds
> 150°C	between 240 and 500 seconds
> 217°C	between 30 and 150 seconds
Peak temperature	max. 260°C
Time within 5°C of actual peak temperature	between 10 and 30 seconds
Cool-down rate (Peak to 50°C)	less than 6°C/second
Time from 30°C to Peak temperature	no greater than 300 seconds

Chip-mount air reflow profile



Microchip Frequency Technology GmbH
Potsdamer Straße 18
D 14 513 TELTOW / Germany
Tel: (+49) 3328 4784-0 / Fax: (+49) 3328 4784-30

Microchip Frequency Technology GmbH reserves the right to make changes to the product(s) and/or information contained herein without notice. No liability is assumed as a result of their use or application. No rights under any patent accompany the sale of any such product(s) or information.

Microchip**Filter specification****TFS 70H33****5/5****History**

Version	Reason of changes	Name	Date
1.0	Generate filter specification	Dunzow W.	26.04.2002
1.1	change temperature range	Channaa	24.10.2005

Microchip Frequency Technology GmbH
Potsdamer Straße 18
D 14 513 TELTOW / Germany
Tel: (+49) 3328 4784-0 / Fax: (+49) 3328 4784-30

Microchip Frequency Technology GmbH reserves the right to make changes to the product(s) and/or information contained herein without notice. No liability is assumed as a result of their use or application. No rights under any patent accompany the sale of any such product(s) or information.