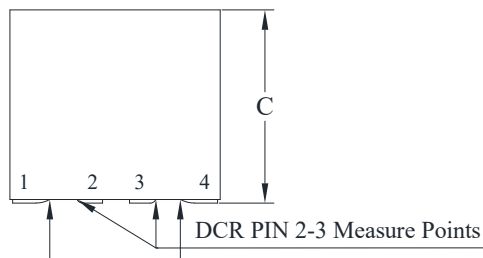
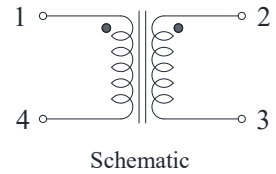
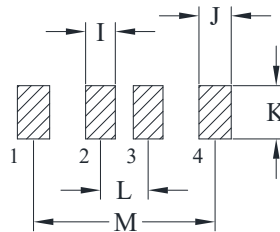
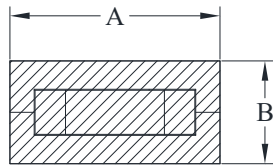


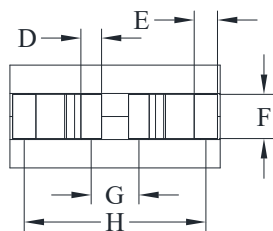


## DELTA P/N: TLM1211F Series

### Mechanical Dimensions & Schematic



DCR PIN 1-4 Measure Points



Suggested PWB Layout

UNIT : mm

A = 11.7±0.3

B = 5.7±0.3

C = 10.7+0.4/-0.3

D = 1.15±0.3

E = 1.3±0.3

F = 2.45±0.3

G = 2.65±0.5

H = 10.1±0.5

I = 1.65

J = 1.8

K = 2.95

L = 2.65

M = 10.1



### Electrical Characteristics @ 25°C, 100kHz, 1V

Delta P/N	L (nH) ± 15%	Li (nH) TYP	DCR (mΩ) ± 10%		Isat <sup>2</sup> (A)			Ir <sup>3</sup> (A)	
			1-4	2-3	25°C	100°C	125°C	1-4	2-3
TLM1211F-111	105	84	0.125	0.37	125	106	100	77	45
TLM1211F-121	120	96			102	87	81		
TLM1211F-151	150	120			84	71	67		
TLM1211F-171	170	136			70	60	56		
TLM1211F-201	200	160			58	50	46		

1. 2\*L<sub>k</sub> is two times of leakage inductance (L(1-2)@3,4 short).
2. Isat is the DC current which causes the inductance drop to Li.
3. Ir is the DC current which causes the surface temperature of the part increase approximately 40 °C.
4. Operating temperature: -40°C to 125°C (Self-temperature rise included).

# Mouser Electronics

Authorized Distributor

Click to View Pricing, Inventory, Delivery & Lifecycle Information:

[Delta Electronics:](#)

[TLM1211F-111](#) [TLM1211F-151](#) [TLM1211F-121](#) [TLM1211F-171](#) [TLM1211F-201](#)