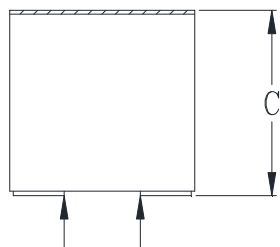
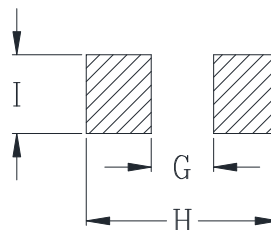
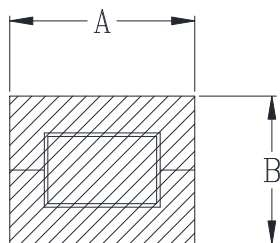




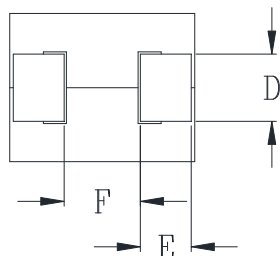
## DELTA P/N : HCUVE806480 Series

### Mechanical dimensions



Suggested PWB Layout

DCR measure points



UNIT : mm

A = 8.0 MAX

B = 6.4 MAX

C = 8.0 MAX

D = 2.9

E = 2.0

F = 3.3

G = 2.8

H = 8.0

I = 3.5

### Electrical Characteristics @ 25°C, 100kHz, 1V

Delta P/N	L <sup>1</sup> (nH)	Li (nH) MIN	DCR (mΩ)	Isat <sup>2</sup> (A)			Ir <sup>3</sup> (A)
				25°C	100°C	125°C	
HCUVE806480-121	120	86	0.18 ± 5%	75	61	56	61
HCUVE806480-151	150	108		59	48	44	

1. Tolerance of inductance : ± 10%
2. Isat is the DC current which causes the inductance drop to Li.
3. Ir is the DC current which causes the surface temperature of the part increase approximately 40 °C .
4. Operating temperature: -40°C to 125°C (Self-temperature rise included).

# Mouser Electronics

Authorized Distributor

Click to View Pricing, Inventory, Delivery & Lifecycle Information:

[Cyntec:](#)

[HCUVE806480-121](#) [HCUVE806480-151](#)