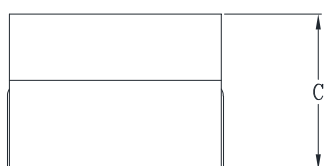
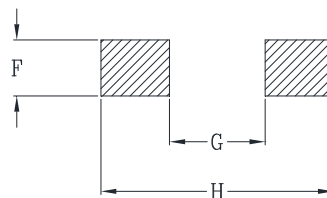
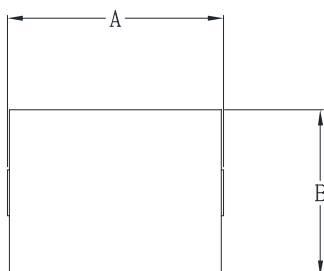


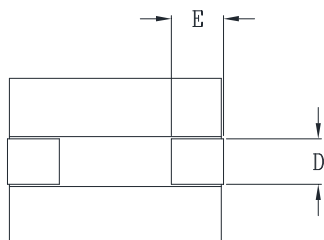


DELTA P/N : HCB1075N Series

Mechanical dimensions



Suggested PWB Layout



UNIT : mm
 A = 10.4 MAX
 B = 8.0 MAX
 C = 7.5 MAX
 D = 2.2
 E = 2.5
 F = 2.7
 G = 4.6
 H = 11.2

Electrical Characteristics @ 25°C, 100kHz, 1V

Delta P/N	L ¹ (nH)	Li (nH)	DCR (mΩ)	Isat ² (A)			Ir ³ (A)
				25°C	100°C	125°C	
HCB1075N-121	115	92	0.29 ± 7%	94	76	71	41
HCB1075N-151	150	120		72	59	54	
HCB1075N-181	175	140		62	50	47	
HCB1075N-211	215	172		48	39	36	
HCB1075N-231	230	184		43	35	32	
HCB1075N-271	270	216		37	30	28	
HCB1075N-311	310	248		32	26	24	

1. Tolerance of inductance : ± 15%
2. Isat is the DC current which causes the inductance drop to Li
3. Ir is the DC current which causes the surface temperature of the part increase approximately 40 °C.
4. Operating temperature: -40°C to 125°C (Self-temperature rise included).

Mouser Electronics

Authorized Distributor

Click to View Pricing, Inventory, Delivery & Lifecycle Information:

[Cyntec:](#)

[HCB1075N-271](#) [HCB1075N-231](#) [HCB1075N-211](#) [HCB1075N-151](#) [HCB1075N-311](#) [HCB1075N-121](#) [HCB1075N-181](#)