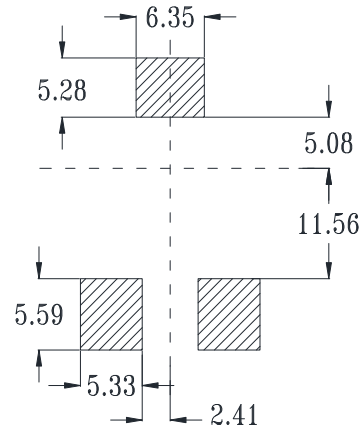
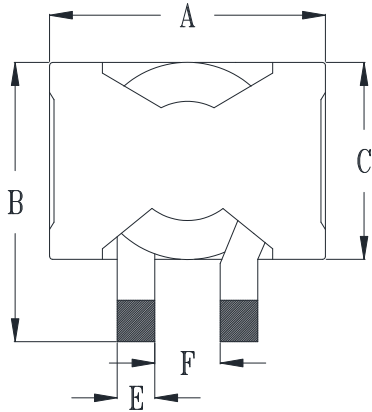


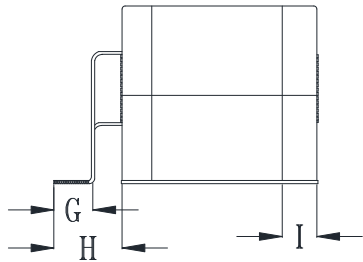
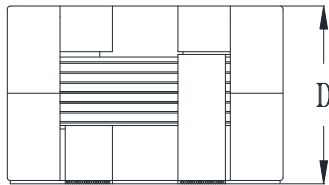


DELTA P/N : HMQ281X Series

Mechanical dimensions



Suggested PWB Layout(mm)



UNIT : mm

A = 27.90 MAX

B = 27.94 MAX

C = 19.80 MAX

D = 17.78 MAX

E = 3.80 TYP

F = 6.63±0.51

G = 3.80 MIN

H = 6.90 TYP

I = 4.00 TYP

Electrical Characteristics: @25°C, 500kHz, 1V

Delta P/N	L ¹ (uH)	Li (uH)	DCR (mΩ) MAX	Isat ² (A)	Ir ³ (A)	D (mm) MAX
HMQ2818-6R8	6.8	20% drop	2.86	45	28	17.78
HMQ2818-100	10	20% drop	2.86	31.2	28	17.78
HMQ2818-150	15	20% drop	2.86	21.2	28	17.78
HMQ2818-220	22±20%	20% drop	2.86	14	28	17.78

1. Tolerance of inductance : ± 10%
2. Isat is the DC current which causes the inductance drop not less than Li
3. Ir is the DC current which causes the surface temperature of the part increase approximately 45 °C.
4. Operating temperature: -40°C to 125°C (Self-temperature rise included).

Mouser Electronics

Authorized Distributor

Click to View Pricing, Inventory, Delivery & Lifecycle Information:

[Cyntec:](#)

[HMQ2818-150](#) [HMQ2818-100](#) [HMQ2818-220](#) [HMQ2818-6R8](#)