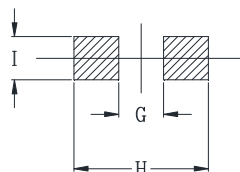
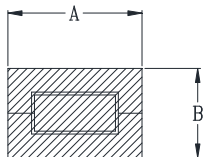


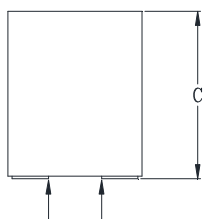


DELTA P/N : HCUVE966412 Series

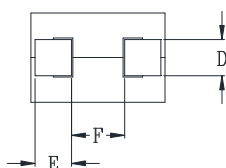
Mechanical Dimensions



Suggested PWB Layout



DCR Measure Points



UNIT : mm
 A = 9.6 MAX
 B = 6.4 MAX
 C = 12.2 MAX
 D = 2.6
 E = 2.6
 F = 3.8
 G = 2.8
 H = 9.5
 I = 3.1

Electrical Characteristics @ 25°C, 100kHz, 1V

Delta P/N	L (nH) ± 10%	Li (nH) MIN	DCR (mΩ) ± 7%	Isat ¹ (A)		Ir ² (A)
				25°C	100°C	
HCUVE966412-121	120	86	0.175	126	101	65
HCUVE966412-151	150	108		101	81	
HCUVE966412-181	180	130		81	66	
HCUVE966412-211	210	151		70	56	
HCUVE966412-221	220	158		65	52	
HCUVE966412-251	250	180		58	46	
HCUVE966412-271	270	194		53	42	
HCUVE966412-301	300	216		46	37	
HCUVE966412-401	400	288		34	27	
HCUVE966412-471	470	338		29	23	

1. Isat is the DC current which causes the inductance drop to Li.
2. Ir is the DC current which causes the surface temperature of the part increase approximately 40 °C .
3. Operating temperature: -40°C to 125°C (Self-temperature rise included).

Mouser Electronics

Authorized Distributor

Click to View Pricing, Inventory, Delivery & Lifecycle Information:

[Cyntec:](#)

[HCUVE966412-151](#) [HCUVE966412-271](#) [HCUVE966412-471](#) [HCUVE966412-181](#) [HCUVE966412-211](#)
[HCUVE966412-251](#) [HCUVE966412-301](#) [HCUVE966412-401](#) [HCUVE966412-121](#) [HCUVE966412-221](#)