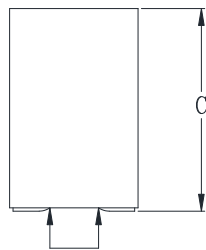
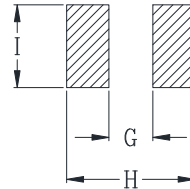
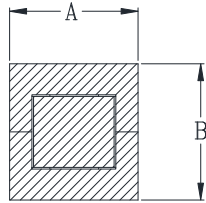


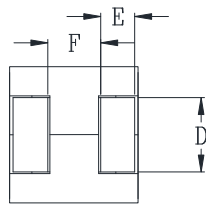


DELTA P/N : HCUVE768012F Series

Mechanical Dimensions



DCR Measure Points



Suggested PWB Layout

UNIT : mm
 A = 7.6 MAX
 B = 8.1 MAX
 (8.3 MAX for 90~120nH)
 C = 12.0 MAX
 D = 4.4
 E = 2.0
 F = 3.1
 G = 2.6
 H = 7.6
 I = 4.9

Electrical Characteristics @ 25°C, 100kHz, 1V

Delta P/N	L (nH) ± 10%	Li (nH) TYP	DCR (mΩ) ± 10%	Isat ¹ (A)			Ir ² (A)
				25°C	100°C	125°C	
HCUVE768012F-900	90	72	0.155	137	116	110	60
HCUVE768012F-101	100	80		124	105	99	
HCUVE768012F-111	110	88		112	95	90	
HCUVE768012F-121	120	96		103	87	82	
HCUVE768012F-131	130	104		95	81	76	

1. Isat is the DC current which causes the inductance drop to Li.
2. Ir is the DC current which causes the surface temperature of the part increase approximately 40 °C.
3. Operating temperature: -40°C to 125°C (Self-temperature rise included).

Mouser Electronics

Authorized Distributor

Click to View Pricing, Inventory, Delivery & Lifecycle Information:

[Cyntec:](#)

[HCUVE768012F-101](#) [HCUVE768012F-131](#) [HCUVE768012F-121](#) [HCUVE768012F-111](#) [HCUVE768012F-900](#)