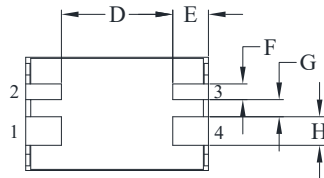
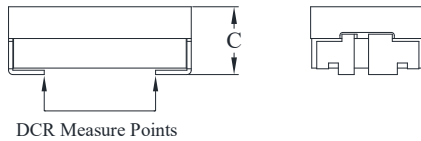
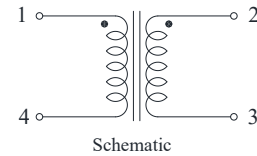
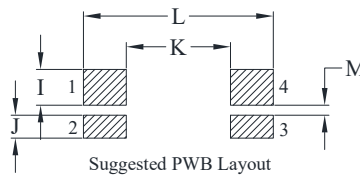
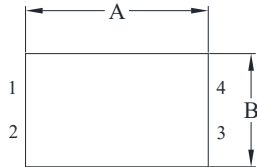




DELTA P/N: TLB138050F Series

Mechanical Dimensions & Schematic



UNIT : mm
 A = 13.0 MAX
 B = 8.0 MAX
 C = 5.0 MAX
 D = 7.8
 E = 2.5
 F = 1.1
 G = 1.2
 H = 2.0
 I = 2.5
 J = 1.6
 K = 7.3
 L = 13.3
 M = 0.7



Electrical Characteristics @ 25°C, 100kHz, 1V

Delta P/N	L (nH) ± 15%	Li (nH) MIN	DCR (mΩ) ±15%		Isat ¹ (A)			Ir ² (A)	
			1-4	2-3	25°C	100°C	125°C	1-4	2-3
TLB138050F-101	100	64	0.55	0.99	90	76	72	30	22
TLB138050F-121	120	77			73	62	58		
TLB138050F-151	150	96			57	48	46		
TLB138050F-181	180	115			45	38	36		
TLB138050F-201	200	128			39	33	31		

1. Isat is the DC current which causes the inductance drop to Li
2. Ir is the DC current which causes the surface temperature of the part increase approximately 40 °C.
3. Operating temperature: -40°C to 125°C (Self-temperature rise included).

Mouser Electronics

Authorized Distributor

Click to View Pricing, Inventory, Delivery & Lifecycle Information:

[Cyntec:](#)

[TLB138050F-181](#) [TLB138050F-101](#) [TLB138050F-151](#) [TLB138050F-201](#) [TLB138050F-121](#)