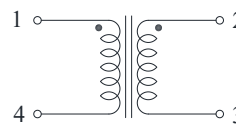
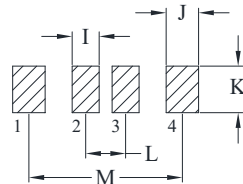
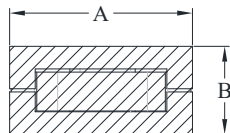




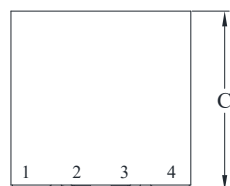
DELTA P/N: TLM126012F Series

Mechanical Dimensions

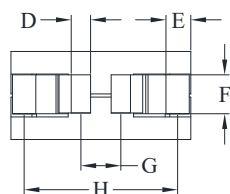


Schematic

Suggested PWB Layout



DCR PIN 1-4 Measure Points



UNIT : mm

A = 12.0 MAX

B = 6.0 MAX

C = 12.1 MAX

D = 1.27

E = 1.63

F = 2.55

G = 2.62

H = 10.07

I = 1.77

J = 2.13

K = 3.05

L = 2.62

M = 10.07



Electrical Characteristics @ 25°C, 100kHz, 1V

Delta P/N	L (nH) ± 10%	Li (nH) MIN	DCR (mΩ) ± 10%		Isat ¹ (A)			Ir ² (A)	
			1-4	2-3	25°C	100°C	125°C	1-4	2-3
TLM126012F-700	70	50	0.125	0.34	160	136	128	75	45
TLM126012F-101	100	72			130	112	103		
TLM126012F-121	120	86			106	90	85		
TLM126012F-151	150	108			83	71	66		

1. Isat is the DC current which causes the inductance drop to Li
2. Ir is the DC current which causes the surface temperature of the part increase approximately 40 °C.
3. Operating temperature: -40°C to 125°C (Self-temperature rise included).

Mouser Electronics

Authorized Distributor

Click to View Pricing, Inventory, Delivery & Lifecycle Information:

[Cyntec:](#)

[TLM126012F-101](#) [TLM126012F-121](#) [TLM126012F-151](#) [TLM126012F-700](#)